



Poway Stamp Club

Newsletter

San Diego County's Best Stamp Collecting Club

Aug 28, 2019

In This Issue

- Next Meeting
- Club presentations
- Club Notes
- Member Spotlight
- Article: "Editors Corner"
- Member Classifieds
- Stamp News

Poway Stamp Club

The Club goals are "to promote a closer social relationship among stamp collectors of Poway, San Diego and vicinity, and to assist in spreading the knowledge of stamps and the pleasures derived from stamp collecting to those interested in philately."

Contact Us

Poway Stamp Club
12675 Danielson Ct #413,
Poway, CA 92064

Club E-mail

PSCphilately@gmail.com

PSC Website:

Powaystampclub.com
Powaystampclub.org

Next Meeting:

The next Poway Stamp Club meeting will be held on **Wednesday Aug 28, 2019**. The program will be:

A Movie Presentation

By

Bill Kolb

Meeting time: The meeting will begin promptly at 6:30 PM.

Meeting Place: 12675 Danielson Court, Suite #413 (in the back of the building), Poway, California 92064.

Please remember to bring your badge. The office phone number in case you need it is [1-858-748-5633](tel:1-858-748-5633).

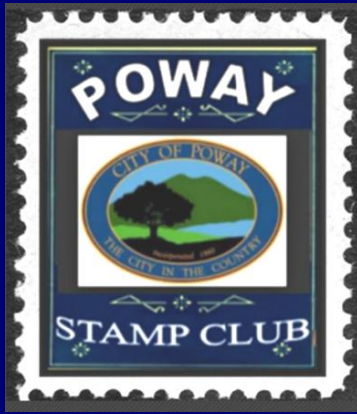
The Following meeting in September will begin with our regular Club business including (Show & Tell + Drawing) followed by the distribution of APS circuit books. Club members who do not wish to participate in the circuit books are encouraged to bring in stamps and other items for sale or trade with other club members.



Circuit Books

and

Member Trading Extravaganza!



2019 PSC Club Officers:

President: Art Berg
Past President Thor Strom
V President David Klauber
Treasurer: Bill Kolb
Secretary: Trice Klauber
Board (AL): Bill O'Connor
Board (AL): Scott Boyd
Program Director Colin Fort

PSC Club Volunteers:

Registrar: Diane Maisonneuve
Auctioneer: Duane Pryhoda
Club Librarian: Scott Boyd
Newsletter Editor D. Klauber
Newsletter Cont. Jon Schrag
Phil. Library Rep:
 Bob Eygenhuysen
Opp. Drawing Ray Hacecky

PSC Representatives:

Fed Rep: Bill O'Connor
S.D. Philatelic Council:
 David Klauber
 Nick Soroka
Rep (Alt): Thor Strom
 Anne Wood
APS Rep Trice Klauber

Stamp on Page 1

The Stamp Image on page one is The rare Irish 2d Coil. It was an experimental vertical coil issued by the Irish Post Office in 1935 One of the scarcest, and most valuable, Irish stamps. Over the years 20 mint copies have been identified. The quantity used is not known, but quality mint copies have sold within the last decade for between 12 - 14k and are extremely scarce.

Eire / (ˈeɪə) Is the Irish Gaelic name for Ireland a former official name 1937-49 for Rep. of Ireland.

Club Meeting Presentations

The following is this year's proposed meeting schedule; all events are proposed and subject to change as necessary to accommodate other events such as Auctions etc.

2019-20 (Proposed) PSC Meeting Schedule

August	Aug 28, 2019	Bill Kolb - APS Movie
September	Sep 11, 2019	Circuit Book Meeting
	Sep 25, 2019	Nick Soroka
October	Oct 9, 2019	Circuit Book Meeting
	Oct 23, 2019	Trice Klauber China Rev.
November	Nov 13, 2019	Circuit Book Meeting
December	Dec 11, 2019	<i>Holiday Party</i>
January	Jan 08, 2020	Circuit Book Meeting
	Jan 22, 2020	Eric E. Chaulsett - Washington-Franklins





**POWAY STAMP
CLUB
APS #1137-112097**

Club meetings are held every second and fourth Wednesday of each month except November & December at:

Philatelic Library
12675 Danielson Ct #413,
Poway, CA 92064

More info at:
www.powaystampclub.com

Participation

All Stamp Club and Library members are strongly encouraged to provide input for the bi-monthly Club newsletter. Your knowledge and expertise should really be shared. Please submit items to the Club Secretary at:

PSCphilately@gmail.com

Club Website

Try our new website at:

PowayStampClub.com

You will find our activities and affiliations, interesting links, contact information including the current and previous versions of this Newsletter! Give it a try! You can use the Web Presence to introduce others to our Club.

Club Notes:

1. **SWAPEX** – Is held on the first Saturday of each month in the Philatelic Library. The next will be held on Saturday **Sep 7, 2019**. 9 AM to 1 PM. SWAPEX is a friendly and informal stamp exchange.

2. **SANDIPEX – Sunday Sep 8, 2018**

San Diego Philatelic Expo SANDIPEX Stamp Show
Free Admission! – Free Parking!
Doors Open from 10am – 4pm

The show is held at the Benevolent and Protective Order of Elks Lodge #2543, 13219 Poway Road Poway, CA 92064 . The following is a list of the current 2019 **SANDIPEX** scheduled monthly show dates.

Sep 8
Oct 6
Nov 10
Dec 8

3. **Support your Club** – With **52 active members**, the Poway Stamp Club is San Diego County's most active Stamp Club. Feel free to forward this Newsletter to anyone you think may find it interesting. You may also support the club by joining the APS. The club will receive a finder's fee for each member who joins the society. Let the stamp community know that we are an alive, vibrant and thriving club!
4. **Frame Workshop Meeting** – The "**We got framed**" group; will hold a design workshop at 5:30, just prior to the bi-weekly Wednesday Club meeting. The next frame workshop is scheduled for Aug 28, 2019. Come and join us and learn more about exhibiting. For more information contact Club Librarian **Scott Boyd**
5. **Show & Tell** – Do you have an interesting philatelic item to share at our next meeting? Bring it in and share it with us as we would love to see it!
6. **Dandy-Roll** – A roller used in paper-making, under which the partly formed paper passes in an early stage of its manufacture. The dandy-roll is a very important from a philatelic standpoint, for in machine made paper it determines its nature-wove, laid (ribbed), batonne (watermark-like lines or ruled), etc. And in the case of watermarked stamps this is the roller that also applies the watermarked devices.
7. **Gripper Marks** – If you see a perforated Byrd block that has a series of rather bizarre marks along the edge that resemble early issue grills. You have most likely stumbled across what the BEP calls Gripper Marks which are caused by over pressure or gripping too tightly by the fasteners on the perforation machine.

San Diego Philatelic Library

The San Diego County Philatelic Library is a not-for-profit philatelic library in Poway, San Diego County, California. Operated by friendly volunteers, your stamp library consists of approximately 16,000 volumes of books, monographs, catalogs, and periodicals.

Library Loose Stamps

The Philatelic library provides a large bucket of assorted stamps for visitor inspection. Please remember to always leave a suitable contribution for any stamp items removed from the bucket.

Library Hours:

The Library hours vary based upon who can take a shift, the hours usually are:

10 to 2:00	Monday
12 to 5:30	Tuesday
12 to 3:00	Wednesday
10 to 2:00	Thursday
?	Friday
1 to 5:00	Saturday

Plus additional hours by appointment only.

Before you visit please call to verify staffing is available.

1-858-748-5633.

Member Spotlight!

By: Jon Schrag



The Poway Stamp Club Newsletter highlights one of its members each issue. Today's spotlight is on **Trice Klauber.**

Trice is perhaps the most formidable SECRETARY ever in the long history of the Poway Stamp Club. She has had a tremendous positive impact on the club. She handles APS circuit books, efficiently tracks member welfare, keeps minutes with famous displays of her unique humor, and has been a DYNAMO for progress!

Her collecting interests include CHINA, MANCHUKUO, and MONGOLIA. She has found incredible stamp FINDS at antique stores while pursuing her antique collection (alternative interest). She is a prime example and a living reminder for all members to check coin and antique dealers as a source of great stamps at potentially bargain prices.

TRICE is a mother of four girls and has had a wonderful career with the GIRL SCOUTS. Incredibly she is a native of SAN DIEGO and knows the city and JULIAN area extensively.

THANK YOU TRICE for all the good work you do for the Poway Stamp Club!

Definitions

The following definition of EFO and other terms is here in support of the ongoing Editors Corner series on EFO's and Counterfeits.

EFO is the shorthand for "Error, Freak, or Oddity". It's a term applied to philatelic items that were formed unintentionally abnormal.

Errors: Are usually "major" errors having catalog status where something in the process has gone entirely wrong. Examples of "errors" are consistent, unintentional deviations from the normal and typically are stamps that are wrongly perforated, both between or completely imperforated, FULL color(s) omitted, inverts, multiple impressions, missing watermarks or tagging and FULL stamps on either side of an interpane gutter, etc.

Freaks: Also called "varieties", are generally defined as a lesser degree of production problem. Typically freaks have flaws that are not consistent or do not have catalog status. Examples of freaks include ink smudges, off center perforation shifts, partially missing colors or color shifts, pre-printing paper folds, paper creases, over or under inked stamps, and so forth. Freaks often sell for less than their "error" counterparts. Printing plate cracks, wear and other flaws such as repairs or re-entries are freaks and not typically considered to be errors.

-- Continued on Next Page --

Editors Corner

By D. Klauber

Stamp Collecting Forgeries EFOs Part XVI



Be careful what you look for
You just might find It!

How to Detect Fake Nebr. / Kans. Overprints

I recently found a site on the Internet which describes several methodologies on how to identify common philatelic forgeries. One of the more interesting items was a discussion on how to identify forgeries of the **Nebr.** and **Kans.** overprints. Having collected this set over 20 years ago, I had not really looked closely at them since completing the set those many years ago. I was both interested as well as apprehensive to remove them from their mounts and begin the forgery evaluation process. Surly it was possible that I might find 1, at least that's what I thought....



1929 Nebraska Overprints

Oddities: The catch-all category for anything that is left. Oddities can be subtle problems that do not have catalog status. Examples can be cancel and plate varieties, inverted USPS cancels, very minor perforation shifts, minor color shifts, etc. Most oddities are a curiosity and have lower EFO values.

There continues to be a debate about the definition of freaks vs oddities. This is one area where a classification can be a matter of personal opinion. Frequently the debate is over pre-printing paper folds and centers on how minor (odddity) or how major (freak) a fold is. As it turns out, one mans freak, is a another mans oddity.

Counterfeit, Forgery, or Fake.

Counterfeit: Fraudulent reproduction of a stamp meant to defraud the issuing authority. (Typically used as postage)

Forgery: fraudulent reproduction or alteration of a stamp meant to defraud (not the issuing authority), In philately, forged stamps are altered to defraud the buyer.

Fakes An imitation stamp, or reprint. There are many fakes on the market, typically sold as fakes they are rarely sold as genuine. In philately, fakes are an expression of art , are not offered as genuine to defraud. (reprints may be considered fakes)

For more information on definitions of and values for many EFOs. See the S.R. Dazt book, "*Catalogues of Errors on US Postage Stamps.*"



1929 Kansas Overprints

It wasn't long before my album was out of its slipcase and its pages opened to the 1922-34 Kansas-Nebraska Overprint Issues. The article and process that I used for identification was developed by **Mike Girard** of Riverside Stamps. Mike Girard is an avid stamp collector who focuses on the 19th and early 20th century U.S. stamps. Mike's goals include providing "an informative and entertaining site to make collecting stamps a more fun and enjoyable experience for the new or novice collector."¹ Mike describes the resources utilized to determine what was relevant concerning the Nebraska / Kansas overprints such as:

- History and how the overprint was printed.
- Printing varieties and "California Counterfeits".
- How to detect a fake overprint - mainly from looking at the overprint itself and how fakes deviate from the genuine.
- Information on first day covers.

Additionally the Riverside site points out that the Nebraska / Kansas fakes are fairly common but luckily, they are all fairly easily spotted.

The two rules Mike uses when checking suspect stamps:

1. All suspect stamps are fakes until proven genuine.
2. Don't forget rule #1.

Why were the Nebr./Kans. Overprints Issued?

In 1929, the federal government began producing stamps overprinted, with state abbreviations and were meant to be available for purchase only in that state of origin. The stamps were accepted as postage in all states, the overprinted stamps were designed to make it more difficult to take stolen stamps across state lines to sell them. The idea being that large out of state sales would appear dubious. In reality the overprints did very little to slow postal crime. The state overprinting was never expanded to other states and was abandoned shortly after the overprinted issues sold out.

Unfortunately for collectors the Kansas-Nebraska issues inspired more illegal activity. As soon as the last genuine overprints were sold, counterfeiters began adding phony "Kans." and "Nebr." overprints to other issues and pawning them off to stamp collectors.

The idea had a short lived revival during World War II. In 1942, the U.S. fearing that another Japanese attack might overrun Hawaii, so it began circulating paper money overprinted with "Hawaii." That way, if the Japanese had captured Hawaii, the voided bills would not be of any financial use to the enemy.

The Identification Process

The following methodology can be used to quickly and easily spot fake Nebr./Kans. Overprints on used and unused stamps (off cover). Additionally even if the perforations and gum breakers pass muster, there is still the possibility that the stamp is still a fake, but the chances are extremely small.

1. **Check Perforations - good for finding used and unused fakes.** There are three common varieties of fully perforated issues of the 1922 - 1932 regular issues. The Nebr./Kans. Overprints were only issued in 1929 on the 11 X 10 1/2 rotary press regular issues of 1926. Any stamp used, unused or otherwise that is not is a fake. Check no further.
2. **Check Gum Breakers - easy on unused not as easy on used.**

The genuine stamps have breakers. Gum breakers "are lightly impressed, parallel ridges occurring at regular intervals on the face side of a stamp in order to prevent curling." There are three breaker variety spacing - 5.5mm (Type I), **22mm (Type II)**, and 12mm (Type III). The breakers run horizontal to the face of the stamp. All genuine Nebr./Kans. overprints have Type II breakers. Meaning that there will only be one breaker unless the breakers are at the extreme top and bottom of the stamp. The gum on a Type II stamp shows a distinct vertical patterning of 14 ridges to some degree. If your stamp is not 11 X 10 1/2 or does not have breaker(s) spaced at 22mm, then your stamp is probably fake.

Absence of gum ridges indicates either re-gumming or re-gumming and a fake overprint. The photo below shows a genuine on left with one gum breaker and on the right a fake with two 12mm (Type III's).

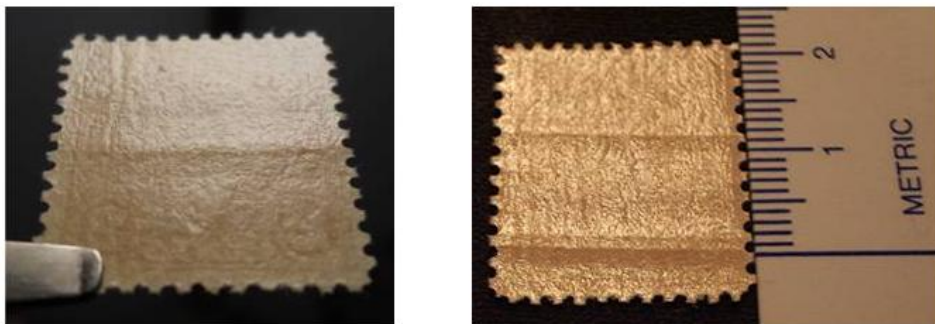


Figure 1 Genuine Breaker on left 12mm Fake on right
(Photo Courtesy Mike Girard)

Gum breakers on unused stamps are easy to spot. A stamp that is used may still have vestiges of a gum breaker(s) even after soaking. The gum breaker ridge impression on a used stamp can be strong enough to be seen see Fig. 2 below.



Figure. 2 Fake Identified by multiple ridges.
(Photo Courtesy Mike Girard)

The stamp seen in Fig. 2 gauges out to the correct 11X10 1/2 but the obvious 5.5mm gum ridges gives it away as a fake. Most **used** stamps will not have such prominent breaker ridges as seen above. In such cases the ridge can typically still be felt. With practice and experience even the faintest gum ridges can be detected on a used stamp by gently holding the stamp to be examined between the thumb and fore finger and feeling the stamp from the top to the bottom. Figure 3 is also a fake with the correct perforations but shows one faint ridge near the bottom when held at an angle, but unfortunately it also has a second ridge at 12mm near the top of the stamp.



Figure. 3 Fake Identified by 2 ridges.
(Photo Courtesy Mike Girard)

These last three ways of detecting a fake overprint should be considered an absolute last resort. It takes access to a large number of genuine and fake stamps and a long time of patient study to even begin to have an idea as to what to look for in the way of color differences and / or differences in the size and shape of the overprints. The first two methods described, perforations and gum breakers, should be more than enough to catch 999 out of 1000 fake overprints. For completeness the 3 additional tests are provided below.

The forgery literature describes another three ways to further detect possible fake overprints:

- Color
- Shape of Overprint
- Plate numbering.

3. Check Color.

For reference the "Genuine Kansas-Nebraska overprints exist only on the 1929 shades of the perforated 11 x 10 1/2 set, and in most values the differences in color are considerable when compared to other printings."

Val.	Color of Genuine Stamps	Color of Bogus Stamps
1c	Dull Yellow-Green	Blue-Green
1 1/2 c	Colors are Similar	
2c	Dark Dull Red	Bright Red
3c	Dark Dull Violet	Bright Violet, Red-Violet
4c	Dark Yellow Brown	Light Yellow-Brown
5c	Dark Dull Blue	Light Blue
6c	Dull Orange	Bright Orange
7c	Grayish Black	Full Black
8c	Olive-Green	Olive-Bistre
9c	Dull Rose	Bright Rose, Orange-Red
10c	Colors are Similar	

Table 1. Colors of Genuine and Bogus Kansas-Nebraska stamps

4. Check Shape of the Overprint.

To compare an overprint requires the image of a certified copy of the overprint as reference. A suspect image can then be overlaid on the reference using your image processing software of choice. Remember to make the suspect image semitransparent and invert the color of the suspect Figure 4 shows a fake overprint (light color) overlaid on a genuine overprint (dark color).



Figure. 4
Above Misaligned Overprint/ Below Genuine Overprint.
(Photo Courtesy Mike & Nadine Girard)

As can be seen in Fig. 4 the fake overprint in the top image, in no way comes close to matching the certified copy. The bottom image shows that the overlay is a near perfect match with little or no variations with the certified copy.

5. Check the Plate Numbering.

The Table below identifies the plate numbers of the issues that were Kansas and Nebraska overprinted by denomination.

Denomination	Kansas	Nebraska
1c	18957, 19302, 19338, 19339	19338, 19339
1 1/2 c	19181, 19191	19182, 19192
2c	19174, 19175, 19273, 19379, 19383, 19384, 19385, 19398, 19430, 19431, 19436, 19447	19989, 18990, 19059, 19204, 19205, 19233, 19378, 19430, 19431,
3c	18126, 18803, 18804	18803, 18804
4c	18038, 18082	
5c	18907, 18908	
6c	18030, 18037	
7c	18736, 18740	
8c	18191, 18192	
9c	18742, 18744	
10c	19234, 19235	

Table 2. (Plating Table)
Plate numbers used in the production of the 1929 series⁵

The Results (Collection Impact)

Just as I suspected, after the analysis of my own overprints page, I found several subject stamps that required my attention. Below are listed the items of concern. Of the 24 stamps 2 extras being color variations, only 2 of the stamps were identified as forgeries. It was obvious that the forger had applied the overprints on another stamp with two breakers. Both forgeries also appeared to be re-gummed. Three stamps needed to be replaced due to the editor's whimsy i.e. (un-cancelled Used NG copies surely needed to be replaced with MNH copies) and one stamp was clearly damaged in the corner requiring (upgrade) replacement.

1. #660 2c Carmine (2 short breaker **re-gum /forgery**)
2. #667 9c Salmon (Genuine NG)
3. #668 10c yellow (2 short breakers **re-gum /forgery**)
4. #671 2c Carmine (Genuine Used)
5. #672 3c Violet (Genuine Used)
6. #673 4c Brown (Genuine tiny corner tear)

Collection Analysis:

~8% of the original stamps were **forgeries** or 2 out of 24. Far more of an impact to my wallet was the fact that I had also identified the need to replace and/or upgrade some of the lesser quality subjects. This impact was 4 times greater than the replacement of forged stamps. So the moral of the story is, be careful what you look for, you just might find it. Below you can see the 24 stamps of overprints after replacements and upgrades and yes if you look closely, the editor does leave notes and writes in his albums.



The Original forgeries or the stamps that required an upgrade



Collection After the analysis upgrades and replacement
(Photo Courtesy D. Klauber)

1. *Riverside Stamps, Mike Girard; <http://riversidestamps.com/>*
2. *Ref, Authentic Kans./Nebr. Overprints, Hartford stamps, EBay guidelines*
3. *Ref, How to detect damaged, altered and repaired stamps, Paul W. Schmidt*
4. *Ref, Counterfeit Kansas-Nebraska Overprints on 1922 - 34 Issue, Robert H. Schoen and James T. DeVoss.*
5. *Paul W. Schmidt. How to Detect Damaged, Altered, and Repaired Stamps, pp. 80 - 81*
6. *Klauber], Photographs taken using a Celestron MP Handheld Digital Microscope Pro*

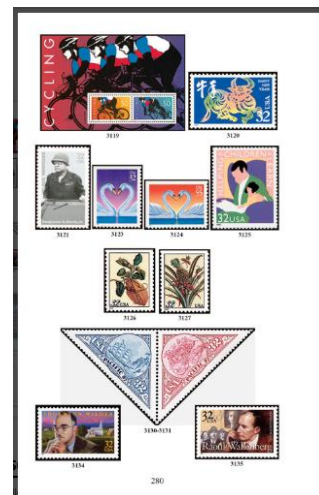
Soapbox

By D. Klauber

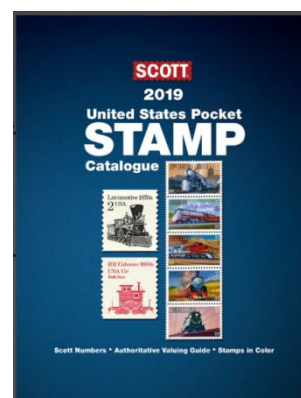
2019 Scott U.S. Pocket Stamp Catalogue

The Scott Pocket Stamp Catalogue, it what the Editor uses to track his U.S. acquisitions. For collectors on the go, the **Scott United States Pocket Stamp Catalogue** offers the ease of lightweight portability combined with essential listing information and values of U.S. postage stamps and selected back-of-the-book issues such as airmail stamps.

Scott No.	Description	Unused Value	Used Value	///
a.	Block or strip of 4, #5075-5080	2.00	2.00	////
3081 32	Breast Cancer Awareness	.65	.65	////
3082 32	Legends of Hollywood - James Dean	.65	.65	////
a.	Inset, pair	1.00	1.00	////
b.	As "c," with (USA, 32) missing	—	—	////
	from a color intergration and an (USA, 32) missing	—	—	////
c.	As "c," (an (USA, 32) missing)	—	—	////
d.	As "c," (a pair missing and missing from a color intergration) and an (USA, 32) missing	—	—	////
e.	As No. 3082, piece of 20, eight from column per f., all three columns inset	7.50	7.50	////
3083 32	Major Casey	.65	.25	////
3084 32	Paul Simon	.65	.25	////
3085 32	John Henry	.65	.25	////
3086 32	Pace 8H	.65	.25	////
a.	Block or strip of 4, #3083-3086	2.60	2.60	////
3087 32	Continental Olympic Center	.75	.25	////
3088 32	Iron Starboard, part	.80	.25	////
3089 32	Iron Starboard, self-adhesive (MSR)	.65	.25	////
a.	Block of one of 20	13.00	13.00	////
3090 32	Rural Free Delivery, Centenary	.65	.25	////
3091 32	Rowboats - "Robert E. Lee"	.65	.40	////
3092 32	Rowboats - "John Dief"	.65	.40	////
3093 32	Rowboats - "The Star"	.65	.40	////
3094 32	Rowboats - "Subaru Intrepid"	.65	.40	////
3095 32	Rowboats - "Tally Ho!"	.65	.40	////
a.	Vertical strip of 5, #3091-3095	3.25	3.25	////
b.	Strip of 5, #3091-3095, with special die cutting	45.00	45.00	////
3096 32	Crust Bank	.75	.25	////
3097 32	Francis and Nancy Cheney	.75	.25	////
3098 32	Cham Miller	.75	.25	////
3099 32	Henry Garfield	.75	.25	////
a.	Block or Strip of 4, #3096-3099	3.00	2.00	////
3100 32	Henrietta	.75	.25	////
3101 32	Jimmy Maceo	.75	.25	////
3102 32	Dorothy Fuchs	.75	.25	////
3103 32	Henry Cartwright	.75	.25	////
a.	Block or Strip of 4, #3100-3103	3.00	2.00	////
3104 28	F. Scott Fitzgerald	.55	.25	////
3105	Endangered Species, One of 15	12.00	8.00	////
a-c.	See strip	80	80	////
3106 32	Computer Technology	.65	.25	////
3107 32	Christmas - Madonna and Child	.65	.25	////
a.	Block (strip) omitted	600.00	—	////
b.	Block (strip) omitted (from part d)	—	—	////



Crisp, full-color illustrations and handy checklists on each page make it easy to keep track of what you have and what you need, whether you're at a show, perusing a dealer's website, or relaxing at your stamp desk at home.



The pages are designed to be a convenient inventory checklist, and are a perfect compact companion at shows, meetings, auctions with illustrations which accompany the listings and values of more than 4000 U.S. stamps. It is available at AMOS Advantage link below for **\$26**.

amosadvantage.com/product/2019-scott-us-stamp-pocket-catalogue

Member Classifieds

If you would like to have a **Free** advertisement in the PSC Newsletter, please email: PSCphilately@gmail.com

For Sale: A collection of over 380 Czechoslovakian Field Post Office cards. Most seem to be dated 1938. Housed in three volumes, all items protected. \$300 or best offer. Email, waoconnor@aol.com or leave message at 760-723-7372. **Bill O'Connor**

For Sale: Want lists serviced for stamps of Puerto Rico. Fill holes in your collection with mostly lower catalog value stamps. See Bob at a PSC meeting or call 858-278-7873 **Bob Schappelle**

For Sale: Worldwide sets, Singles and Souvenir sheets. 60% off Catalog to all Club Members. Offer valid anywhere you see me. Phone: 714-476-3698 Email: CBCSTAMP@AOL.com. **Chuck Bigler.**

For Sale: \$525. Cat of worldwide souvenir sheets, some high Cat machins. \$100. Call **Duane** at 858-735-3800

For Sale: Stamps at Bargain Prices, Come and see my Stock. By appointment so please call to set up a time. Home Phone: 858-271-0262 Mobile Phone: 858-449-3047 **Al Kish**

For Sale: Oct. is the month for the Christmas USPS issue. You can get classic Christmas stamps from Morgan at below catalog prices. Limited quantities, all U.S. mint never hinged. **Morgan Christen**

Wanted: U.S. 1893 Columbian issue errors, freaks and oddities. Top dollar paid for Columbian plate varieties especially double transfers. **For Sale:** large selection of used and mint Australia, Great Britain, and Japan including single stamps and souvenir sheets at a fraction of catalog value. Email your want list to Bob McArthur (rmcarthur@cox.net) or bring to a PSC meeting.”

Wanted: Puerto Rico Town cancels. Bring to meeting. Will trade or buy. See member M. Marti PSC # 410.

Supplies:



Thanks to Chris Diaz at Stamp Paraphernalia for updating their PSC site information on the net.

Check out their online store for all your Philatelic supply needs.



New Stamps United States Postal Service Stamps

The new lineup has people, events and cultural events related to the history of the U.S. The following descriptions from the U.S.P.S. can be found at : https://about.usps.com/newsroom/national-releases/2018/pr18_095.htm



Aug 1, 2019 | Forever 55 cents | Military Working Dogs

Military Working Dogs – In 2019, the U.S. Postal Service honors the nation’s brave and loyal military working dogs. Each of the four stamps features a stylized geometric digital illustration of one of four of the canine breeds – German shepherd, Labrador retriever, Belgian Malinois, and Dutch shepherd – that commonly serve in America’s armed forces. USPS announced in a statement that one of their 2019 forever stamp collections will honor the "nation's brave and loyal military working dogs." The dogs will sit on top of a white star with either a red or blue background. USPS said the colors represent the American flag and patriotism.

Aug 8, 2019 at 11 a.m. EDT | Forever 55cents | Single Stamp Design

The Woodstock Music and Art Fair was held in the small farming community of Bethel, NY, in August 1969. Approximately 500,000 members of the “Woodstock Generation,” a term later used in reference to young people of the time, convened to promote peace and love through music.



Art director Antonio Alcalá designed the stamp artwork which features an image of a dove along with the words “3 Days of Peace and Music,” evocative of the original 1969 promotional poster for the festival. In the stamp art, the words are stacked in the background in brilliant colors along with the year 1969, USA and Forever (the value of the stamp). The white dove stands in the foreground. The stamps will be available for purchase Aug. 8.

Aug 29, 2019 | Forever 55cents | Multiple Stamp Design

Tyrannosaurus rex dominated the tail end of the dinosaur age. A recent surge in discoveries has revolutionized our understanding of the fierce carnivore. Four dynamic designs on a pane of 16 stamps depict the awe-inspiring dinosaur in growth stages from infancy to adulthood. One design illustrates a face-to-face encounter with a *T. rex* approaching through a forest clearing; another shows the same young adult *T. rex* with a young *Triceratops* — both dinosaurs shown in fossil form. The third and fourth stamps depict a newly hatched *T. rex* covered with downy feathers and a bare-skinned juvenile *T. rex* chasing a primitive mammal.



“The Nation’s *T. rex*,” the young adult depicted on two of the stamps, was discovered on federal land in Montana and is one of the most studied and important specimens ever found. Its remains are now exhibited at the Smithsonian Institution’s National Museum of Natural History in Washington, DC. *The Tyrannosaurus Rex* stamps are being issued as Forever stamps. Forever stamps will always be equal in value to the current First-Class Mail 1-ounce price.

Sept. 12, Walt Whitman. One (85¢) 3-ounce rate forever commemorative stamp; Literary Arts series; AP; Huntington Station, NY 11746; USPS item No. 120304 (pane).

Sept. 17, Winter Berries. Four (55¢) forever definitive stamps in double-sided pane of 20; winterberry, juniper berry, beautyberry, soapberry; Tulsa, OK.

New Stamp - Stamp images provided by the United States Postal Service.
Copyright © 2019 USPS. All Rights Reserved.