

Poway Stamp Club

Newsletter

San Diego County's Best Stamp Collecting Club

January 10, 2021

In This Issue

- Club Meetings and Presentations
- Club Notes
- Closed Album
- Member Spotlight
- Article: "Editors Corner"
- Article: Art Berg
- Article: Bill O'Connor
- Board Meeting & Presidents Message
- Member Classifieds
- Stamp News

Poway Stamp Club

The Club goals are "to promote a closer social relationship among stamp collectors of Poway, San Diego and vicinity, and to assist in spreading the knowledge of stamps and the pleasures derived from stamp collecting to those interested in philately."

Contact Us

Poway Stamp Club
12675 Danielson Ct #413,
Poway, CA 92064

Club E-mail

PSCphilately@gmail.com

PSC Website:

Powaystampclub.com
Powaystampclub.org

PSC Bid board:

<https://powaystampclub.com/bid-board>

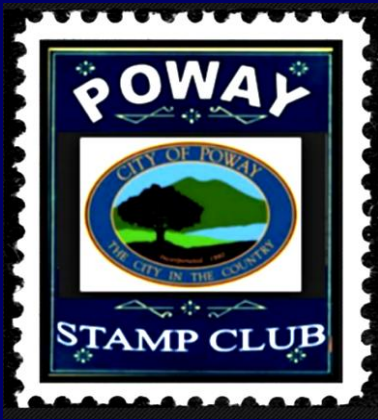
Next Meeting:

Poway Stamp Club Meetings – Until further notice, all PSC meetings have **been postponed due to Covid-19 Pandemic.**

2021 Club Meeting Schedule/Presentations:

The following is this year's proposed meeting schedule; all events are proposed and subject to change as necessary to accommodate other events such as Auctions etc.

January	Jan 13, 2021	Postponed
	Jan 27, 2021	Postponed
Bid Board 1	Jan 24 Noon – Feb 7 Noon	Scheduled
February	Feb 10, 2021	Postponed
	Feb 24, 2021	Postponed
March	Mar 10, 2021	Postponed
	Mar 24, 2021	Postponed
April	Apr 14, 2021	TBD
	Apr 28, 2021	TBD
May	May 12, 2021	TBD
	May 26, 2021	TBD
June	Jun 09, 2021	TBD
	Jun 23, 2021	TBD
July	Jul 14, 2021	TBD
	Jul 28, 2021	TBD
August	Aug 11, 2021	TBD
	Aug 25, 2021	TBD
September	Sep 08, 2021	TBD
	Sep 22, 2021	TBD
October	Oct 13, 2021	TBD
	Oct 27, 2021	TBD
November	Nov 10, 2021	TBD



2020 PSC Club Officers:

President:	Art Berg
V President	David Klauber
Treasurer:	Bill Kolb
Secretary:	Trice Klauber
Board (AL):	Bill O'Connor
Board (AL):	Scott Boyd
Prev. President	Thor Strom
Program Dir.	Bill Wacenske

PSC Club Volunteers:

Registrar:	Trice Klauber
Auctioneer:	Duane Pryhoda
Club Librarian:	Scott Boyd
Newsletter Editor	D. Klauber
Newsletter Cont.	Jon Schrag
Phil/Lib Rep:	Bob Eygenhuysen
Opp. Drawing	Ray Hacecky
WebMaster	Flash

PSC Representatives:

Fed Rep:	Bill O'Connor
S.D. Phil. Council:	Nick Soroka
Rep (Alt):	Art Berg
APS Rep	Trice Klauber

Stamp on Page 1

The image on page one is a genuine 1849 37L1 2c Blue Cheever & Towle, Boston, Mass. Local Stamp. Local stamps can be an interesting and valuable part of our philatelic history, including stamps that were issued by Local Posts (city delivery), Independent Mail Routes and Services, Express Companies and other private posts which competed with or augmented official government services.

Club Notes:

1. **NOTICE 2021 Club Elections** – Please look for and respond to the PSC email ballot and **cast your vote** for the 2021 slate of club officers.
2. **Club Purchases of Raffle Stamps** – At this time the club will not be soliciting the purchase of additional Raffle Stamps. The club has accumulated a comprehensive set of lots which are sufficient to support a year or more of PSC meetings. The club will revisit the need to purchase supplementary lots after the pandemic subsides and our club meetings have resumed. – The Board –
3. **Bid Board – PSC Bid Board Schedule**
The first 2021 Bid Board session will:
 - Start Sunday January 24th at noon and
 - End February 7th at noon.

Don't forget that your submissions for this first session are due to the Secretary **NLT Noon on January 20th** We will continue your unsold items from the last 2020 Bid Board unless you notify us otherwise. Last years Bid Boards were very successful and we look forward to your continued support.

4. **Philatelic Library Open** - We have been notified that the San Diego Philatelic Library is open but visitors will require an appointment. Because of social distancing, no more than eight people at a time will be allowed in the library. Face covering is required and a questionnaire regarding your health will also have to be answered before entry.
Contact the Library for details @ 1-858-748-5633
5. **Poway Stamp Club Meetings – Welcome to the New Year...** Until further notice, all PSC meetings have **been postponed due to Covid-19 Pandemic.**
6. **Support your Club** – The Poway Club is San Diego County's most active Stamp Club. Feel free to forward this Newsletter to anyone you think may find it interesting. You may also support the club by joining the APS. The club will receive a finder's fee for each member who joins the society. Let the stamp community know that we are an alive, vibrant and thriving club!



**POWAY STAMP
CLUB
APS #1137-112097**

Club meetings are held every
second and fourth
Wednesday of each month
except November &
December at:

Philatelic Library
12675 Danielson Ct #413,
Poway, CA 92064

More info at:
www.powaystampclub.com

Participation

All Stamp Club members are
strongly encouraged to
provide input for the bi-
monthly Club newsletter.
Your knowledge and
expertise should really be
shared. Please submit items
to the Club Secretary at:

PSCphilately@gmail.com

Club Website

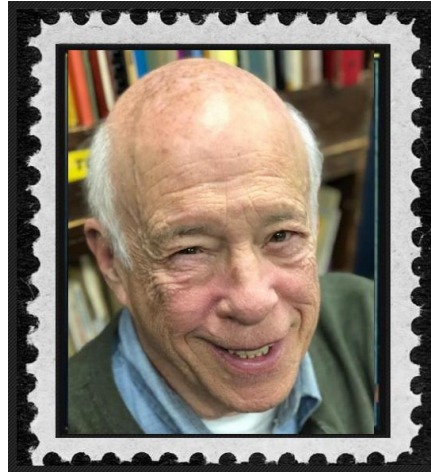
Try our new website at:

PowayStampClub.com

You will find our activities
and affiliations, interesting
links, contact information
including the current and
previous versions of this
Newsletter! Give it a try!
You can use the Web
Presence to introduce
others to our Club.

7. **SWAPEX** – Until further notice, all **SWAPEX** gatherings have been postponed due to Covid-19 Pandemic.
8. **SANDIPEX 2021** – Until further notice, all shows are **Currently Postponed indefinitely**
9. **Prevention of Foxing and Fungi** - As with most things, a penny of prevention is worth a pound of cure. It is important to point out that the best way to deal with foxing, mold or fungi are to prevent them in the first place. Starting with Humidity.
10. Most conservators do not use fungicides. Though a variety of substances have been used as fungicidal fumigants (thymol, ortho-phenylphenol), none are actually fungicides, but rather, they are fungi static, inhibiting fungal growth only while the toxin is present. Dissipation or evaporation of the substance will allow fungal growth to continue. A true fungicide would kill all fungi and spores on contact and these products do not. **The Editor does not recommend spending (wasting) money on Fungicides.**
11. **New postage rates coming this month** - If you live in the United States, sending some types of mail will get more expensive later this month. Although the cost of mailing a regular letter will remain at 55¢, beginning on January 24, **postage for each additional ounce** will jump from 15¢ to 20¢, and postcards will cost 36¢ each to mail, an increase of just one penny. In addition to those changes, **Priority Mail rates** are going up, too. The cheapest, a regular flat-rate envelope, will cost \$7.95 to mail, up from \$7.75 at present.
– **Philosateleia** -
12. **Philately as a Science** – The science of stamp collecting sometimes expressed in collecting “varieties” demonstrates that stamp collecting is not merely a passing hobby of persons whose accumulating instincts need an outlet. Simply put, stamp collecting is rather a recreation and a pleasure with occasional profit which is increased by observation and study. Be a Student of the Science of Philately. - *The Editor* –

CLOSED ALBUM



It is with deep regret, that we announce that one of our newest members **MARK APPELBAUM** has passed on December 21st 2020 from complications of the Covid-19 Virus. Mark was an active new member (January 2020) of the Poway Stamp Club. Mark, who was a philatelist, had recently donated his life-long stamp collection to the LA JOLLA SYMPHONY/CHORUS. Because the symphony had no idea how to monetize his valuable collection, they quickly appointed Mark to advise them how to sell it. Mark joined the PSC because he knew that the members of the PSC could help him with current stamp knowledge and assist him with identification of the collection. Mark was amazing no matter where he worked. He volunteered at the SDPL and was always asking how he could help. When given an album or just a mess of stamps to work on he quickly returned them organized and catalogued. Exceeding expectations was his norm.

MARK APPELBAUM at first glance appeared to be a mild-mannered senior gentleman. “Just call me Mark.” he would say to his new stamp-collecting friends. But Mark was actually a very famous Professor Emiratis at UCSD with multiple honorary titles. He was a former FULLBRIGHT SCHOLAR, and a world-renowned university researcher. We are all saddened that we did not have more time to know our new friend Mark and he will be missed.

May He Rest In Peace

Member Spotlight!

By: Jon Schrag



The Poway Stamp Club Newsletter highlights one of its members each issue. Today's spotlight is on

2 New Members
Stephen Scheidel
Michael Flannagan

We have **two new members** since our last newsletter. During Covid-19, our President Art Berg has set aside the need to be formally voted in. Request for membership has been granted to the following:

#497 Stephen Scheidel of Vista California requested membership to the Club and was presented for membership by Art berg. He collects U.S.

#498 Michael Flannagan of El Cajon California requested membership to the Club and was presented for membership by Art berg. He is a current APS member and Collect Large Banknotes, U.S.

This brings our total membership to 66. We look forward to getting together at PSC meetings with our new members after the Covid pandemic is over.

Definitions

The following definition of EFO and other terms are here in support of the ongoing Editors Corner series on Varieties, EFO's and Counterfeits.

EFO is the shorthand for "Error, Freak, or Oddity". It's a term applied to philatelic items that were formed unintentionally abnormal.

Errors: Are usually "major" errors having catalog status where something in the process has gone entirely wrong. Examples of "errors" are consistent, unintentional deviations from the normal. Typically errors are stamps that are wrongly perforated, both between or completely imperforated, Full incorrect, shifted or omitted color(s), inverted centers or frames, multiple impressions, missing/inverted surcharges, missing or wrong watermarks or tagging and FULL stamps on either side of an interpane gutter, factually wrong or misspelled information etc.

Freaks: Also called "varieties", are generally defined as a lesser degree of production problem. Typically freaks have flaws that are not consistent or do not have catalog status. Examples of freaks include ink smudges, off center perforation shifts, partially missing colors or partial/random color shifts, pre-printing paper folds, paper creases, over or under inked stamps, and so forth. Freaks often sell for less than their "error" counterparts. Printing plate cracks, wear and other flaws such as repairs or *re-entries* are freaks and not typically considered to be errors.

-- Continued on Next Page --

Editors Corner

By D. Klauber

Varieties & EFOs Part XXVIII



THE 1847 #1 Type "E" or "MOWERSHIFT"

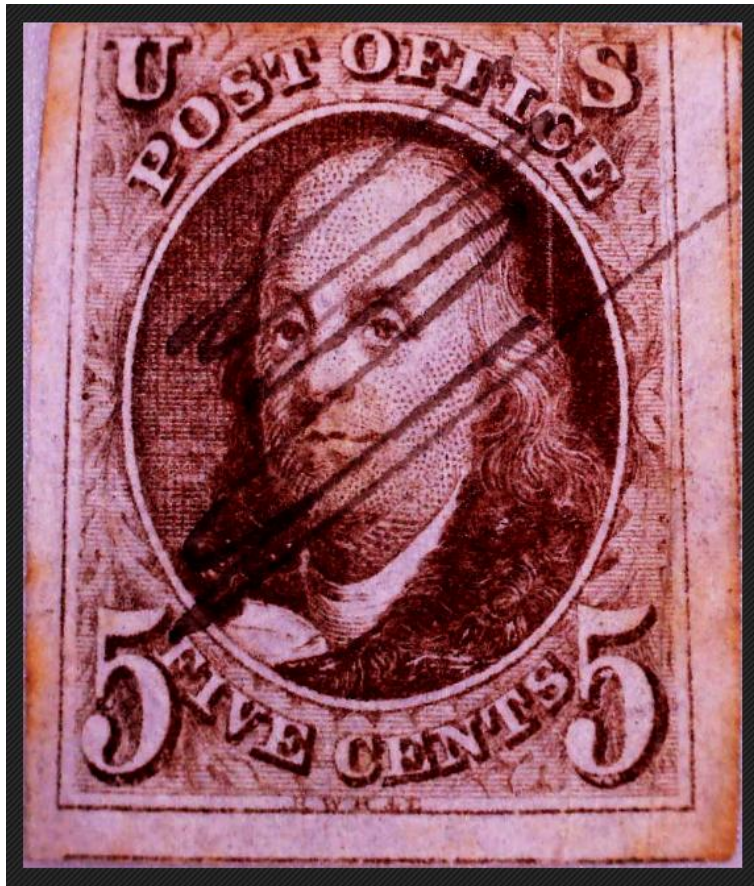


Figure 1. 1847 5c #1 Type E double transfer the "Mower shift"
Courtesy D. Klauber.

Not so very long ago, I was going through some of the stamps which had wondered their way into my collection. The stamps were originally owned by my grandfather and then later by my father. One of these stamps (**Figure 1**) is an interesting looking Scott #1, 1847 5¢ Red Brown Franklin. After much scrutiny, I determined that the stamp showed some significant and unusual doubling in its upper left corner. The stamp was a very good early impression with 3 huge margins, unfortunately the top margin is sorely lacking with what appears to be a pre-print paper fold error from right third, top to bottom of the issue.

Oddities:

The catch-all category for anything that is left. Oddities can be subtle problems that do not have catalog status. Examples can be cancel and plate varieties, inverted USPS cancels, very minor perforation shifts, minor color shifts, etc. Most oddities are a curiosity and have lower EFO values.

There continues to be a debate about the definition of freaks vs oddities. This is one area where a classification can be a matter of personal opinion. Frequently the debate is over pre-printing paper folds and centers on how minor (oddy) or how major (freak) a fold is. As it turns out, one mans freak, is a another mans oddity.

Counterfeit, Forgery, or Fake.

Counterfeit:

Fraudulent reproduction of a stamp meant to defraud the issuing authority. (Typically used as postage)

Forgery:

Fraudulent reproduction or alteration of a stamp meant to defraud (not the issuing authority), In philately, forged stamps are altered to defraud the buyer.

Fakes:

An imitation stamp, or reprint. There are many fakes on the market, typically sold as fakes they are rarely sold as genuine. In philately, fakes are an expression of art are not offered as genuine to defraud. (reprints may be considered fakes)



Figure 2. 1847 5c #1 Type E double transfer the “Mower shift”
Photo Courtesy D. Klauber

I later learned that this stamp, a Scott “Type E” variety, was discovered in the 1920s by the San Francisco stamp dealer R.H. Mower.¹ The variety was added to the Scott catalog in 1993, at the recommendation of Mr. William Hatton. The Robert Siegel Auction Galleries listed a copy of this stamp in sale 993 on Sept. 2010 calling it “One of the **great rarities** of the issue.” There has always been some question as to whether the variety is actually is a double transfer even though 1847 expert, Duane Garrett called it one.



Figure 3. 1847 5c #1 (1e) showing DT lines in “U”, “S” and “T”
Photo Courtesy D. Klauber

More Important Definitions

Reissues

(a reprint of a currently available stamp)

Reprints

(copies of the obsolete originals)

Special Printings

(original plate stamps for non-postal use, while originals are still valid for postage)

Government issued Reproductions

(Not printed from the original plates, not valid postage, considered likenesses.)
Examples US Scott 3-4

For more information on definitions of and values for many EFOs. See the S.R. Dazl book, "Catalogues of Errors on US Postage Stamps."



Figure 4. - 1847 5c #1 Type E also known as the "Mower shift," lines appear to extend through the S and T in POST and through the U at upper Left.

Photos Courtesy D. Klauber

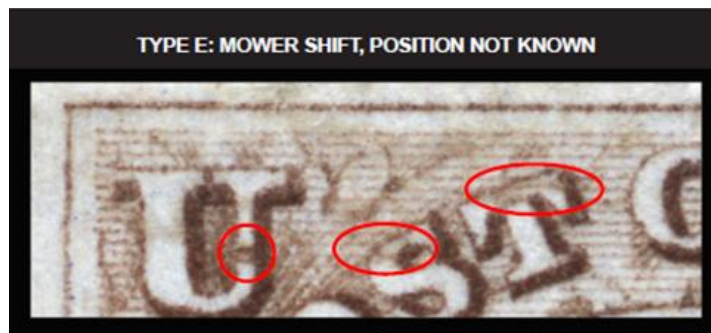


Figure 5. 1847 5c #1 Type E also known as the "Mower shift," from Chronicle 265/ Feb. 2020 ¹

For comparison Figure 5 shows another example of the "Mower shift" presented by Gordon Eubanks in his Chronicle article Plate Varieties on 5c 1847 Stamps; the three characteristic lines of the 1(E) the two examples in this article are nearly identical to one another.

The Type E double transfer, also known as the **Mower shift**, was described in the writings of 1847 student Duane Garrett who was published in *Chronicle* 92.² The article provided many useful details, including its discovery in the 1920s and that there has always been some doubt if the variety is actually a double transfer. Historically Garrett called it a Double Transfer. “Ashbrook in correspondence called it a “double transfer” in quotation marks, suggesting he had doubts.” and in his *Special Service* (page 436) he wrote: “I do not know whether this is a plate variety or a very minor double transfer, but whatever it is, it is rather outstanding as a variety of the 5¢ 1847.”

Scott’s U.S. specialized catalog lists the item as (SC#1e), a double transfer. The variety is clearly shown in the plating diagram in Lester Brookman’s *The United States Postage Stamps of the 19th Century* (1966) at page 38 of Volume I. The identifying characteristics of the Type E variety, as highlighted in red circles in the enlargements of Figures 4&5: faint background lines that appear to extend through the S and T in POST and less clearly through the U at upper left. Importantly, Garrett’s article also cites a letter from Ashbrook speculating that, since the marks are shallow, they probably wore down quickly and so are not visible in the later printings. The “E” variety is very scarce, and much rarer than either the type “A” or “B” varieties. It is believed that “due to the fact that the extra lines were not cut very deep on the plate and soon wore away, that the “E” variety can only be found in the very earliest prints of the plate. Others have stated that the variety is certainly scarce; with **the possibly of only 10 copies recorded.**

What was the cause of this variety? Some have speculated that the variety is a uniform and consistent double transfer and that the DT is of background lines. This is illustrated by the fact that the lines are horizontal and of the same thickness, gap and structure as those in the background. It is presumed that an early entry was unsatisfactory which was "pounded" or "burnished" out and then a fresh entry was made. The pounding or burnishing process was not done perfectly and a number of background lines remained. Similar transfers are known on the 1851 issues.

Again, Varieties & EFO’s make an exciting and educational addition to any stamp collection for they speak to us about how stamps are produced and how mistakes can be made during the production of stamps.

1. **1847 Period** Plate Varieties on 5¢ 1847 Stamps; Gordon Eubanks; *The Chronicle*, U.S. Philatelic Classics Society, Vol.72 #1, Year 2020 *Chronicle* 25
2. **1847 Period** on 5¢ 1847 Plate Variety,” the "E" Double Transfer or Mower Shift”, Duane B. Garrett; *The Chronicle*, U.S. Philatelic Classics Society, Volume: 28 Number: 4 Year: 1976 *Chronicle*: 92

San Diego Philatelic Library

The San Diego County Philatelic Library is a not-for-profit philatelic library in Poway, San Diego County, California. Operated by friendly volunteers. Your stamp library consists of approximately 16,000 volumes of books, monographs, catalogs, and periodicals.

Library Loose Stamps

The Philatelic library provides a large bucket of assorted stamps for visitor inspection. Please remember to always leave a suitable contribution for any stamp items removed from the bucket.

Library Hours:

The Library hours vary based upon who can take a shift, the hours usually are:

10 to 2:00	Monday
12 to 5:30	Tuesday
12 to 3:00	Wednesday
10 to 2:00	Thursday
12 to 6:00	Friday
1 to 5:00	Saturday

Plus additional hours by appointment only.

Before you visit the Library, please call to verify staffing is available.
1-858-748-5633.

Soapbox

By Art Berg

Attractive Stamps or the “Stamp of Approval”



Sweden Scott #1786

This stamp from Sweden was issued in 1994 and features King Carl XVI. It is a common definitive (Scott # 1786) however, a well placed ink “smudge” makes it look like some unruly hair has cropped up! Stamp collecting is fun!



Detail of “unruly hair”

Art

Member Article

By Bill O'Connor

Post Offices and History San Diego County Postmarks



Warner Springs

Warner Springs is today is still in an isolated part of the northeastern part of San Diego County. The area was named after Jonathan Trumbull (Juan Jose) Warner who had arrived in California in 1831. His ranch holdings at one time reached 45,000 acres. The native population of Warner Springs was forced to leave to a new reservation, Pala, in 1903.

The first post office of Warner Springs opened June 28, 1905. Two earlier post offices lasted on and off from 1859-1907. The area was a famous way station for travel along the Butterfield Trail, with branches going to Los Angeles and San Diego.

1. The first cover celebrates the Centennial of the Butterfield Overland Mail. 1858-1958; the route went from Tipton, Missouri, to San Francisco, CA. Warner Springs was an important location for immigrants and travelers coming to Southern California in the early days.



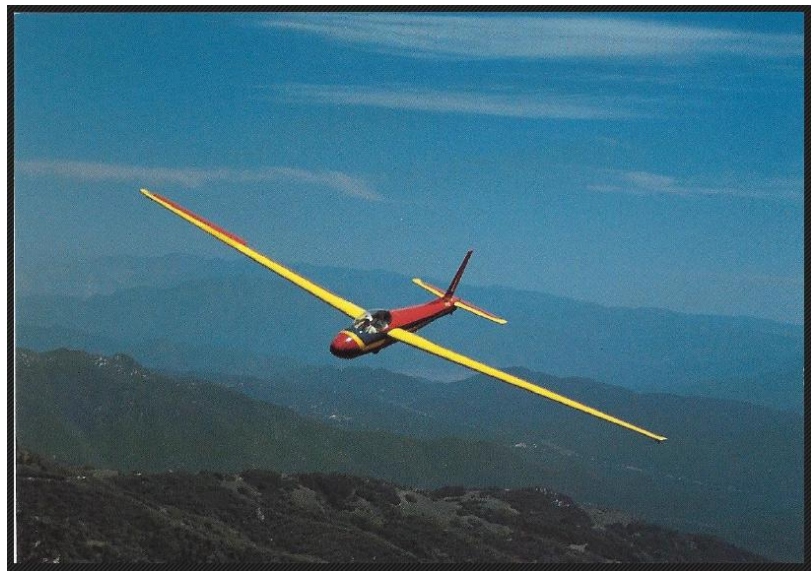
Butterfield Centennial 1958

2. The second cover shows the inauguration of the United States Postal Service in 1971. Let's hope the postal service sees better days in 2021 and into the future.



Inauguration FDC 1971

3. The post card is showing one of the gliders, owned by Sky Sailing, Warner Springs CA. I had a wonderful experience many years ago soaring up and beyond Mt. Palomar with my daughter. They are still in business, telephone 760-782-0404. When the Covid-19 is under control, this might make a great experience for the family.



Warner Springs Glider post card

Regards, Bill

Board Meeting & Presidents Message

Presidents Message

Below in this newsletter you will find the minutes of our board meeting held on January 6, 2021. Despite a crazy year of social distancing and stay at home orders, PSC emerged from 2020 with an increase in our membership and a healthy financial status. I would like thank the PSC board and the membership for their efforts in making PSC the best stamp club in San Diego. Moving forward, we hope to have many opportunities to meet, talk about stamps and most importantly get reacquainted with old and new friends in 2021.

Wishing everyone a happy and healthy new year.

Art Berg (President)

Compendium: 1/6/2021 PSC Board Meeting

PSC Board of Directors Meeting January 6th, 2021 4 p.m. teleconference

Attended by: Art Berg, David Klauber, Bill Kolb, Trice Klauber, Bill O'Connor, Scott Boyd

- Item 1 Election of Officers (AB) Current officers agreed to remain if elected Board agree to present members with election through email (Action Item TK)
- Item 2 Treasurers report (BK) No changes to Bank account Dec 2020 financial report, current total asset \$13,899.46 Notice club has reached capacity on raffle stamps at this time (Action Item DK) Preparing for audit, solicit Dick Gunderson (Action Item BO)
- Item 3 Membership (AB) #'s and growth 63 paid, 66 total with life memberships and appropriate member removal from both counts. Updates on membership Roster process
- Item 4 Meetings (AB) Waiting for return to normalcy Ideas for returning to meetings and a welcoming event
- Item 5 Bid-Board (Action Item DK) Restart on 1-24-21

Trice Klauber (Secretary)



Member Classifieds

If you would like to have a **Free** advertisement in the PSC Newsletter, please email: PSCphilately@gmail.com

For Sale: I have an extensive collection of US mint plate blocks, sheets, panes, etc. The years range primarily from 1940-2002. If you are looking for specific blocks, I may be able to help. Please send an email, waoconnor@aol.com, or call/leave a message, 760-723-7372. Want lists can also be sent to Bill O'Connor, 3803 Foxglove Lane, Fallbrook, CA 92028-8764

For Sale: Want lists serviced for stamps of Puerto Rico. Fill holes in your collection with mostly lower catalog value stamps. See Bob at a PSC meeting or call 858-278-7873

Bob Schappelle

For Sale: Worldwide sets, Singles and Souvenir sheets. 60% off Catalog to all Club Members. Offer valid anywhere you see me. Phone: 714-476-3698 Email: CBCSTAMP@AOL.com.

Chuck Bigler.

For Sale: \$525. Cat of worldwide souvenir sheets, some high Cat machins. \$100. Call **Duane** at 858-735-3800

Duane Pryhoda

For Sale: Stamps at Bargain Prices, Come and see my Stock. By appointment so please call to set up a time. Home Phone: 858-271-0262 Mobile Phone: 858-449-3047 **Al Kish**

Wanted: Topicals on the following subjects: spiders, trilobites, Shih Tzu dogs, lunar new year [year of, etc.], paintings by Manet, Delacroix, Gericault, David, Brueghel. U.S. 1893 Columbian issue errors, freaks and oddities. Top dollar paid for Columbian plate varieties especially double transfers. **For Sale:** large selection of used and mint Australia, Great Britain, and Japan including single stamps and souvenir sheets at a fraction of catalog value. Email your want list to Bob McArthur (rmcarthur@cox.net) or bring to a PSC meeting." **Bob McArthur**

Wanted: Puerto Rico Town cancels. Bring to meeting. Will trade or buy. See member **M. Marti** PSC # 410.

Wanted: Imperial China, PRC, Manchukuo, Mongolia, U.S. Double Transfers/Re-entries, U.S. 19th Century Proofs and Essays. U.S. 19th Century. See D & T Klauber or contact us at Indysmama@gmail.com.



Stamp News:



New Stamps 2021 United States Postal Service Stamps

The 2021 stamp program commemorates Missouri statehood, Japanese Americans who fought in World War II and Chien-Shiung Wu, one of the most influential American nuclear physicists of the 20th century. Fun issuances include Western Wear, Backyard Games, Espresso Drinks, a stamp showcasing a visual riddle, and four Message Monster stamps with self-adhesive accessories. The program also includes Mid-Atlantic Lighthouses, the last of the popular Lighthouse stamp series.

This is a partial list of the 2021 stamp program. All stamp designs are preliminary and subject to change.

Lunar New Year • Year of the Ox

In 2021, the Postal Service will issue the second of 12 stamps in a new series of Lunar New Year stamps. Calling to mind the elaborately decorated masks used in the dragon or lion dances often performed during Lunar New Year parades, these three-dimensional masks are a contemporary take on the long tradition of paper-cut folk art crafts created during this auspicious time of year. Art director Antonio Alcalá designed the stamp with original art by Camille Chew.



Love

The Postal Service continues its popular Love series with a new stamp in 2021. The stamp art features a lighthearted and colorful digital illustration with the word “LOVE” and three large hearts shown in an unconventional palette of color duos, strikingly set against a dark blue background. Greg Breeding was art director; Bailey Sullivan created the original art and designed the stamp.



Chien-Shiung Wu

Chien-Shiung Wu (1912-1997) was one of the most influential nuclear physicists of the 20th century. During a career that spanned more than 40 years in a field dominated by men, she established herself as the authority on conducting precise and accurate research to test fundamental theories of physics. Art Director Ethel Kessler designed the stamp with original art by Kam Mak.



Garden Beauty

Garden Beauty celebrates America's love of flowers and gardens with 10 new stamp designs in a booklet of 20. The stamps include a pink flowering dogwood; a rose-pink and white tulip; an allium, or ornamental onion; a pink and white Asiatic lily; a magenta dahlia; a yellow and pink American lotus; a pink moth orchid with mottled petals; a pink and white sacred lotus; an orange and yellow tulip; and a yellow moth orchid with a pink center. Art director Ethel Kessler designed the stamps with existing photographs by Allen Rokach.



Mystery Message

The new Mystery Message stamp will put your sleuthing skills to the test. Featuring bright colors and interesting shapes, the stamp design is a visual riddle spelling out a message. Each colorful square contains a letter in an interesting pattern. The patterns, though seemingly random, were carefully placed so that when put all together, the message reads, “MORE THAN MEETS THE EYE!” Art director Antonio Alcalá designed the stamp.



Colorado Hairstreak

The Colorado hairstreak graces the eighth non-machine able butterfly stamp for use on irregularly sized envelopes, such as square greeting cards, invitations or announcements. The stamp art is a highly stylized, simplified image of a Colorado hairstreak (*Hypaurotis crysalus*). Artist Tom Engeman created the stamp art. Art director Derry Noyes designed the stamp.



Barns

Four new postcard stamps celebrate the beauty and history of American barns. With differing qualities of light and color, each piece reflects one of the four seasons: a round barn surrounded by the hazy light and warm colors of fall, a gambrel-roofed barn in summer, a forebay barn in early spring countryside, and a Western barn on a winter's night. Ashley Walton designed the stamps with original artwork by Kim Johnson. Greg Breeding was the art director.



Backyard Games

These stamps capture many of the games Americans play for outdoor fun. A pane of 16 stamps features eight unique designs including: badminton, bocce, corn hole, croquet, flying disc, horseshoes, tetherball and a



variation on pick-up baseball. Greg Breeding was the art director. Mike Ryan designed the stamps with original artwork by Mick Wiggins.

Day of the Dead

In recent decades, Day of the Dead has caught on in the United States as a festive and increasingly popular celebration for all ages. These new stamps will be the first issued by the U.S. Postal Service to mark this holiday. Luis Fitch designed and illustrated the stamps. Antonio Alcalá was the art director.



Brush Rabbit

The Postal Service features a brush rabbit (*Sylvilagus bachmani*) on this beautiful new additional-ounce stamp, available on a pane of 20 or in a coil of 100.

The pencil-and-watercolor illustration is from preexisting artwork by designer and illustrator Dugald Stermer. The brush



rabbit is a small brownish cottontail rabbit of the U.S. West Coast and Baja California, Mexico. Art director Ethel Kessler designed the stamp.

Heritage Breeds

These stamps pay tribute to heritage breeds, preindustrial farm animals that are enjoying renewed attention for their versatility,



adaptability and unique genetic traits. This pane of 20 stamps includes photographs of 10 heritage breeds: the American Mammoth Jackstock donkey, the Narragansett turkey, the Cayuga duck, the San Clemente Island goat, the Mulefoot hog, the Cotton Patch goose, the American Cream draft horse, the Barbados Blackbelly sheep, the Milking Devon cow and the Wyandotte chicken. Zack Bryant designed the stamps with photographs by Aliza Eliazarov. Greg Breeding served as art director.



Raven Story

Merging traditional artwork with modern design touches, this stamp depicts one of many stories about Raven, a figure of great significance to the Indigenous peoples of the Northwest Coast.

Among the cultures of the region, Raven plays an essential role in many traditional tales, including stories about the creation of the world. Inspired by the traditional story of Raven setting free the sun, the moon and the stars, Tlingit/Athabaskan artist Rico Worl depicts Raven just as he escapes from his human family and begins to transform back into his bird form. Antonio Alcalá served as art director.



Go for Broke: Japanese American Soldiers of WWII

With this commemorative stamp, the Postal Service recognizes the contributions of Japanese American soldiers, some 33,000 altogether, who served in the U.S. Army during World War II. The stamp, printed in the intaglio method, is based on a photograph. “Go for Broke” was the motto of the all-Japanese American 100th Infantry Battalion/442nd Regimental Combat Team and came to represent all Japanese American units formed during World War II. The stamp was designed by art director Antonio Alcalá.

Western Wear - The U.S. Postal Service celebrates the enduring



legacy of Western wear with four fun new Forever stamps in a booklet of 20. The stamp art features four graphic illustrations of Western wear staples — a cowboy hat, a cowboy boot with a spur, a Western shirt, and a belt buckle featuring a longhorn head. Each image is framed by elements common to the American West and iconography of the region, including cacti, snakes, roses and stars. Art director Greg Breeding designed

the stamps with original art by Ryan Feerer.



Mid-Atlantic Lighthouses

The long-running series celebrating American lighthouses

continues with five new stamps. The mid-Atlantic lighthouses featured in this issuance are: Thomas Point Shoal, MD; Montauk Point, NY; Harbor of Refuge, DE; Navesink, NJ; and Erie Harbor Pierhead, PA. The late Howard Koslow was the artist for these stamps as well as previous issuances in the Lighthouse series. Mid-Atlantic Lighthouses were the last stamps he illustrated for the Postal Service. The art director was Greg Breeding.



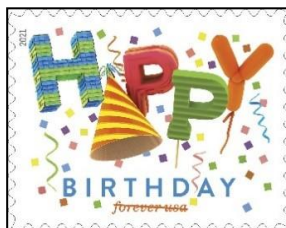
Missouri Statehood - This stamp celebrates the bicentennial of Missouri statehood. Missouri became the 24th state in the Union on Aug. 10, 1821. The stamp art is an existing photograph of Bollinger Mill State Historic Site by noted landscape photographer Charles Gurche. Art director Greg Breeding designed the stamp.



Message Monsters - The four fun designs on this new pane of 20 stamps invite interactivity with dozens of self-adhesive accessories that personalize your cards, letters and envelopes for delighted recipients. Decorations include hearts, hats, voice balloons, flowers and thought bubbles. Art director Antonio Alcalá designed the pane with new illustrations by Elise Gravel.



Espresso Drinks - America's love of coffee is celebrated with four new stamps in a booklet of 20. Four digital illustrations feature cups of four different drinks: caffe latte, espresso, caffe mocha and cappuccino. The names of the espresso drinks appear in art-deco-inspired lettering above or below each cup. Art director Greg Breeding designed the stamps with original artwork by Terry Allen.



Happy Birthday - This Happy Birthday stamp conveys exuberant greetings by calling to mind the childhood excitement of a birthday party. Each of the five letters in the word "HAPPY" is inspired by a different party decoration in the midst of a flurry of multicolored ribbons and confetti. This stamp was designed by Lisa Catalone Castro and Rodolfo Castro, featuring a digital illustration by the latter. Ethel Kessler served as art director.

New Stamps - Copyright © 2021 USPS. All Rights Reserved.