



Poway Stamp Club Newsletter

San Diego County's Best Stamp Collecting Club

Jun 10, 2020

In This Issue

- Next Meeting
- Club Presentation
- Club Notes
- Member Spotlight
- Article: "Editors Corner"
- Articles "Soapbox"
- Member Classifieds
- Stamp News

Poway Stamp Club

The Club goals are "to promote a closer social relationship among stamp collectors of Poway, San Diego and vicinity, and to assist in spreading the knowledge of stamps and the pleasures derived from stamp collecting to those interested in philately."

Contact Us

Poway Stamp Club
12675 Danielson Ct #413,
Poway, CA 92064

Club E-mail

PSCphilately@gmail.com

PSC Website:

Powaystampclub.com
Powaystampclub.org

Next Meeting:

NOTICE:

All Club meetings are still postponed until further notice.

Next Meeting: Our next Poway Stamp Club meeting will be scheduled when our Club President and/or Board have reason to believe that the current uncertain times have passed in regards to the Covid-19 Pandemic.

The NEW PSC Bid Board is Online: The PSC Bid Board is now online. It was made available via our website at noon May 13th for a 10 day session. As of this writing, a number of PSC members are both participating as sellers and others as buyers. Please support this effort as 10% of all sales go to support the club. With each new session you will find a growing number of items listed for attractive prices at <https://powaystampclub.com/bid-board>

Here are some Bid Board FAQs :

- Now, You must be a paid member of PSC to buy or sell
- 10% of the sale price will go to support our club
- Sellers may list up to 5-10 items each session (exceptions may be made on request)
- All unsold lots will automatically be relisted in next session
- Sellers must notify us to remove or change a listing price
- Minimum prices of items must contain the cost to ship the item listed locally (i.e. San Diego County)
- Buyers outside of SD County will be responsible for additional shipping charges
- The Minimum prices listed on Site are not updated, a list of the current bids will be posted "periodically" for buyers
- At the end of each session, Buyer-Sellers will be contacted and introduced to allow the coordination of payment and shipping.



2020 PSC Club Officers:

President:	Art Berg
V President	David Klauber
Treasurer:	Bill Kolb
Secretary:	Trice Klauber
Board (AL):	Bill O'Connor
Board (AL):	Scott Boyd
Prev. President	Thor Strom
Program Dir.	Bill Wacenske

PSC Club Volunteers:

Registrar:	Diane Maisonneuve
Club Auctioneer:	Duane Pryhoda
Club Librarian:	Scott Boyd
Newsletter Editor	D. Klauber
Newsletter Cont.	Jon Schrag
Phil/Lib Rep:	Bob Eygenhuysen
Opp. Drawing	Ray Hacecky
WebMaster	Flash

PSC Representatives:

Fed Rep:	Bill O'Connor
S.D. Philatelic Council:	Nick Soroka
Rep (Alt):	Art Berg
APS Rep	Trice Klauber

Stamp on Page 1

On the page one header are two of the 1940s August Tiger poster stamps. The stamps are in a set of six promoting the benefits of stamp collecting, was created in the late 1940s by A. August Tiger of New York. As the stamps declare, not only does stamp collecting build better citizens, but the hobby also "builds friendships," "brings the world into your home," and "makes facts exciting." Another stamp advises you to "collect air mail stamps" because you can "enjoy your own indoor airport."

Poway Stamp Club Newsletter is still being produced and sent electronically to our club members. We will continue to utilize this Newsletter and emails to communicate with our membership the status of our clubs activity.

Please contact the club Secretary at PSCPhilately@gmail.com with any information that you would like to have disseminated to the entire club during these uncertain times. Also, please keep us informed of yours or other club members' health situation as appropriate.

Please take advantage of this Newsletter to continue with your collecting. All members are allowed a free add in this newsletter, you could use the add to trade or swap stamps with other members via the USPS while we are all isolated. Our website www.powaystampclub.com has a page dedicated to things you can do with your collection while we are in quarantine.

Thankfully, we still do not have "confirmed" cases of Covid-19 within our membership. (knock on wood) Everyone please stay safe....



POWAY STAMP CLUB **APS #1137-112097**

Club meetings are held every second and fourth Wednesday of each month except November & December at:

Philatelic Library
12675 Danielson Ct #413,
Poway, CA 92064

More info at:
www.powaystampclub.com

Participation

All Stamp Club members are strongly encouraged to provide input for the bi-monthly Club newsletter. Your knowledge and expertise should really be shared. Please submit items to the Club Secretary at:

PSCphilately@gmail.com

Club Website

Try our new website at:

PowayStampClub.com

You will find our activities and affiliations, interesting links, contact information including the current and previous versions of this Newsletter! Give it a try!
You can use the Web Presence to introduce others to our Club.

Club Meeting Presentations

The following is this year's proposed meeting schedule; all events are proposed and subject to change as necessary to accommodate other events such as Auctions etc.

2020 (Proposed) PSC Meeting Schedule

----- All future Meetings are Postponed for Now -----

June	Jun 10, 2019	Postponed/Cancelled
	Jun 24, 2019	Postponed/Cancelled
July	Jul 8, 2019	Postponed/Cancelled
	Jul 22, 2019	Postponed/Cancelled
August	Aug 12, 2019	Circuit Book Meeting
	Aug 26, 2019	Bill Kolb --- Penny Black
September	Sep 09, 2019	Circuit Book Meeting
	Sep 23, 2019	The 2 nd Annual "Ugly Stamp" Contest. Honors and Prizes!
October	Oct 14 2019	Circuit Book Meeting
	Oct 28, 2019	Poway Stamp Club Auction
November	Nov 11, 2019	Circuit Book Meeting
December	--- TBD ---	<i>Holiday Party</i>

Club Notes:

1. **Poway Stamp Club** – Now is a great time to develop a stamp presentation to support our new Program Coordinator who is requesting that all interested club members please advise him of any ideas/projects they may have for meeting programs. You may e-mail Bill Wacenske at: *stampdude03@gmail.com* or call 805-581-2923.
2. **SWAPEX** – **SWAPEX is cancelled until further notice.**
3. **SANDIPEX 2020** – **Sunday June 14th (Cancelled) July Show still Tentative.**

San Diego Philatelic Expo SANDIPEX Stamp Show
Free Admission! – Free Parking!
Doors Open from 10am – 4pm

The show in its 17th year is located just 4 blocks to the north of the Philatelic Library on Poway Road. The show is held at the Benevolent and Protective Order of Elks Lodge #2543, 13219 Poway Road Poway, CA 92064 . The following is a list of the current 2020 SANDIPEX Monthly show dates.

JANUARY 19		JULY 12
FEBRUARY 9	2020	AUGUST 9
MARCH 8	OUR 17 TH	SEPTEMBER 20
APRIL 5	YEAR	OCTOBER 11
MAY 3		NOVEMBER 8
JUNE 14		DECEMBER 13

Email: cbestamp@aol.com &
Sandipex.stampexpo@gmail.com

4. **NOTICE:** The Philatelic Library will hold its “**Garage Sale**” on Aug 1st. It will be held at the Library in the open air parking lot.
5. **Support your Club** – With over **50 paid members**, the Poway Club is San Diego County’s most active Stamp Club. Feel free to forward this Newsletter to anyone you think may find it interesting. You may also support the club by joining the APS. The club will receive a finder’s fee for each member who joins the society. Let the stamp community know that we are an alive, vibrant and thriving club!

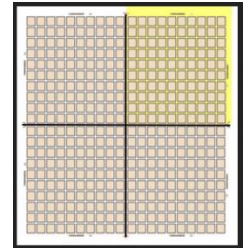
6. **Club Membership Dues Are Due!** – Remember that annual dues are payable in January. Keep in good standing with the PSC and help to support your club.

7. **Flag Stamps** – A series of postage stamps honoring the over-run countries. First of the series was Poland which was placed on sale at Washington D.C June 22, 1943.



8. **WANTED** – Members or guests to tell a stamp story. The Poway Stamp Club invites you to share your philatelic passion by giving a presentation at one of our meetings or by writing a short article for our newsletter. If you are interested, or want to find out more, e-mail pscphilately@gmail.com or talk to one of our Club's officers.

9. **Guide Lines** – For the flat plate printing process, the BEP engraved straight lines across the plate, between the stamps sometimes a single horizontal or vertical line, but usually two lines crossing at the center of the plate. They were used as guides for cutting the sheet into panes.



10. **Panama-Pacific Exposition Issue** - Is a set of U.S. commemorative postage stamps issued to promote the Pan-Pacific Exposition of 1915 in San Francisco, California. The set was first issued in 1913 to provide advance promotion for the 1915 event.



11. **Match Stamps** – Die stamps for use of manufacturers were first issued in 1864, as engraved by Butler & Carpenter.

12. **Navo-philatelist** – A person interested or a collector of ship cancellations, American or foreign, specifically relating to Naval vessels.

13. **Pack Mule Express** – Pioneer mail routes for the far west. Described by E.A.Wiltsee, in *The Pioneer Express*
14. **FYI** – At **Costco** during the crisis is having special senior hours in Poway.

Senior Hours*: 9am - 10am, Daily

15. **Patent Paper** – Sometimes known as Douglas Paper after its inventor. Developed as the result of the Post Office attempt to stop the reuse of stamps. Also known as Double Paper which was punched with small holes. Used on stamps in 1881-82.
16. **Posted on the High Seas** – A Letter(s) hand-stamped indicating mailing on the high seas. There are several Universal Postal Union provisions that permit mailing on the high seas for ships who carry a flag of a member nation.
17. **Private Express Carriers** – These were services that competed with the U.S. P.O. dept. mainly in 1841-1861 period.
18. **Proof Flight** – A Test flight used to determine a new mail route.
19. **Many Thanks** – The Editor would like to thank all those who have participated in the new Bid Board. In Session 1 over 50% of the items were sold. Session 2 listing doubled and the participation has been amazing. Several members have paid dues in order to participate. Keep it up and don't miss out on the fun. Thanks Again!
20. **Quadrille Paper** – A paper with a water mark design of crossed lines at right angles to each other.
21. **Pelure Paper** - A very thin, transparent, yet strong paper that looks a little like moderately darkened onion-skin paper.
22. **Perfins** - (Shortened form of "perforated initials" or "perforated insignia") A stamp with privately punched holes, similar to perforations, in the form of initials or a symbol that identifies the owner of the stamp. Perfins were produced to prevent theft or misuse of their stamps.

Member Spotlight!

By: Jon Schrag



The Poway Stamp Club Newsletter highlights one of its members each issue. Today's spotlight is on **Trice Klauber.**

Trice is perhaps the most formidable SECRETARY ever in the long history of the Poway Stamp Club. She has had a tremendous positive impact on the club. She handles APS circuit books, efficiently tracks member welfare, keeps minutes with famous displays of her unique humor, and has been a DYNAMO for progress!

Her collecting interests include CHINA, MANCHUKUO, ICELAND and MONGOLIA. She has found incredible stamp FINDS at antique stores while pursuing her antique collection (alternative interest). She is a prime example and a living reminder for all members to check coin and antique dealers as a source of great stamps at potentially bargain prices.

TRICE is a mother of four girls and has had a wonderful career with the GIRL SCOUTS. Incredibly she is a native of SAN DIEGO and knows the city and JULIAN area extensively.

THANK YOU TRICE for all the good work you do for the Poway Stamp Club!

Definitions

The following definition of EFO and other terms is here in support of the ongoing Editors Corner series on Varieties, EFO's and Counterfeits.

EFO is the shorthand for "Error, Freak, or Oddity". It's a term applied to philatelic items that were formed unintentionally abnormal.

Errors: Are usually "major" errors having catalog status where something in the process has gone entirely wrong. Examples of "errors" are consistent, unintentional deviations from the normal and typically are stamps that are wrongly perforated, both between or completely imperforated, FULL color(s) omitted, inverts, multiple impressions, missing watermarks or tagging and FULL stamps on either side of an interpane gutter, etc.

Freaks: Also called "varieties", are generally defined as a lesser degree of production problem. Typically freaks have flaws that are not consistent or do not have catalog status. Examples of freaks include ink smudges, off center perforation shifts, partially missing colors or color shifts, pre-printing paper folds, paper creases, over or under inked stamps, and so forth. Freaks often sell for less than their "error" counterparts. Printing plate cracks, wear and other flaws such as repairs or re-entries are freaks and not typically considered to be errors.

-- Continued on Next Page --

Editors Corner

By D. Klauber

Varieties

There Is No Substitute For Knowledge

— o * o — Understanding Grills

Grills – On a stamp is sometimes an embossed pattern of small indentations intended to discourage postage stamp reuse. Used in the United States in the 1860s and 1870s, they were designed to allow the ink of the cancellation to be absorbed more readily by the fibers of the stamp paper, making it harder to wash off the cancellation.¹ Below is a Mint 79 with an "A" grill with lines enhanced, grill A is the only type where the "whole stamp" is grilled.



Grill "A" Only Whole Stamp Embossing

The United States Post Office has always been concerned about the reuse of postage. In the early years of US postal history many stamps were fraudulently cleaned and reused which resulted in the loss of revenue to the post office. There have been many approaches used to prevent the reuse of stamps which includes double papers and Grills. The grill however, was for a very short period of time used as part of the stamp creation process and was the only tactic used on standard regular issues. The other methods, such as use of double paper were considered as "experiments."

Oddities: The catch-all category for anything that is left. Oddities can be subtle problems that do not have catalog status. Examples can be cancel and plate varieties, inverted USPS cancels, very minor perforation shifts, minor color shifts, etc. Most oddities are a curiosity and have lower EFO values.

There continues to be a debate about the definition of freaks vs oddities. This is one area where a classification can be a matter of personal opinion. Frequently the debate is over pre-printing paper folds and centers on how minor (oddy) or how major (freak) a fold is. As it turns out, one mans freak, is a another mans oddity.

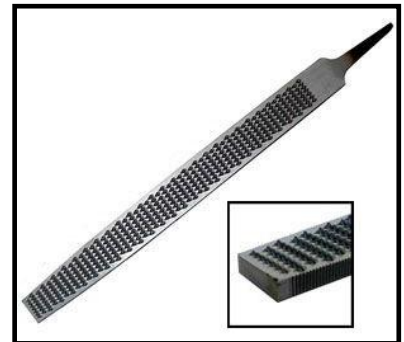
Counterfeit, Forgery, or Fake.

Counterfeit: Fraudulent reproduction of a stamp meant to defraud the issuing authority. (Typically used as postage)

Forgery: Fraudulent reproduction or alteration of a stamp meant to defraud (not the issuing authority), In philately, forged stamps are altered to defraud the buyer.

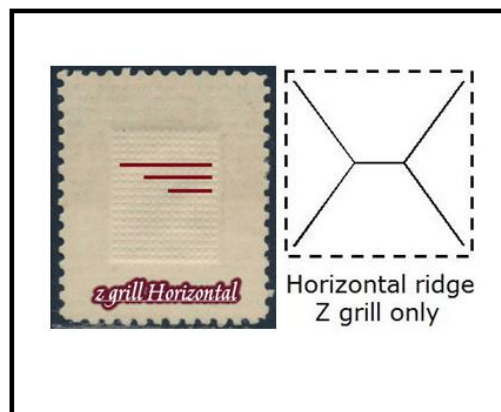
Fakes An imitation stamp, or reprint. There are many fakes on the market, typically sold as fakes they are rarely sold as genuine. In philately, fakes are an expression of art are not offered as genuine to defraud. (reprints may be considered fakes)

What is a grill? - A grill is a very small series of triangular embosses in a stamp. These tiny impressions allow ink from a cancellation to absorb into the fibers of the stamp. It is because of this grill absorption that ink stains remains which cannot be easily removed. As a result, the stamp can without difficulty, be identified as used. Grills were applied using metal printing plates these plates had a collection of grill blocks outfitted with multiple tiny points similar to the surface of a common wood rasp.



The points were meant to gently break the paper fibers so that the cancellation inks would not just sit on top of the stamp where it could be removed. Instead, the ink was meant to soak deep into the stamp paper and be absorbed by the broken paper fibers. The grill was designed to make removing an ink cancellation more complicated. It is unfortunate that so many grills were so poorly applied. Much of the variance was the result of the fact that the fine ridges in the metal printing plate would wear down fairly quickly. The plate wear resulted in a wide variance in the grill impressions many of these being very lightly applied.

The Post Office experimented with many different patterns and as a result, there ended up being eleven different grill patterns that are identified by letters. Interestingly, the letters A-I and Z do not denote a dimension, silhouette, or appearance of a grill, but rather, indicate the order that they were identified. The “Z” grill” is the single exception, which was recognized by a Mr. William L. Stevenson. Stevenson was unable to discern which group the new grill belonged or which grills came before or after it, so he assigned it a “Z” being suggestive of the unknown.



The “Z” The only Horizontal Ridge Grill

More Important Definitions

Reissues

(a reprint of a currently available stamp)

Reprints

(copies of the obsolete originals)

Special Printings

(original plate stamps for non-postal use, while originals are still valid for postage)

Government issued

Reproductions

(Not printed from the original plates, not valid postage, considered likenesses. Examples US Scott 3-4)

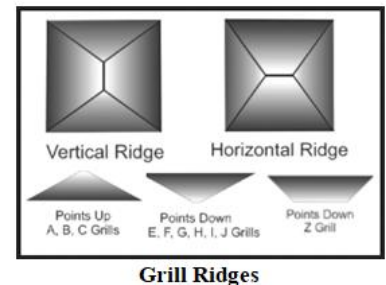
For more information on definitions of and values for many EFOs. See the S.R. Datz book, "Catalogues of Errors on US Postage Stamps."

The evolution of grill experiments which started with grill pattern "A" was a true learning experience for the Post Office. As such, grill A was the only embossing that covered the entire stamp. It is because grilling breaks the paper fibers of a stamp, that this "whole" stamp grilling made the "A" type grills very brittle as well as made them nearly impossible to separate cleanly at the perforations. A decision was made to reduce the size of the grill to cover only the area in the center of the stamp. The B grill and C grills were introduced in 1867, followed by the D, Z, E, F, G, H & I grills, all of which were slightly different sizes.

Grills were applied to stamp issues between 1867 and 1871. The U.S. stamps that are known to have the eleven grills are listed by Scott Catalog Numbers in the far right column below. (Editors best try)

Grill	Points Up/Down	Grill size in MM	# of Points	Scott # Red < 10 Blue (rare)
A	U	All of stamp	n/a	79,80,80a,81
B	U	18x15	12 x 18	82
C	U	13x16	16 -17 x 18-21	83
D	D	12x14	15 x 17-18	84,85
E	D	11x13	14 x 15-17	86-91
F	D	9x13	11-12 x 15 -17	92-101
G	D	9 1/2 x 9 1/2	12 x 11-11.5	112-122
H	D	10x12	11-13 x 14-16	134-144
I	D	8 1/2 x 10	10-11 x 10-13	134-144
J	D	7 x 9.5	9-10 x 12	All CBNC issues except for the 24 and 90 cent 158e,179c
Z	D	11x14	13 -14 x 18	85A,85b,85c,85d,85e,85f

The first three grill types (A, B & C) are known as **points-up** because the points created by the grilling process point up from the face of the stamp. The rest of the grill types (D, Z, E, F, G, H & I) are **point down**, i.e. they point downward into the surface of the stamp. When magnified the point down points will show either a vertical or horizontal ridge as illustrated to the right. Only the Z grill shows a horizontal ridge while all other point-down grills (D, E, F, G, H & I) show vertical ridges.

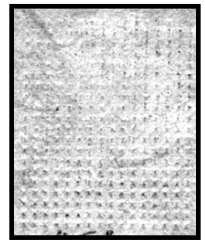


Grill Identification - Identifying the various grills is much easier than most collectors realize. Rather than struggling with exact measurements of the grills, all can be positively and quickly identified because according to "*Stamp Smarter*" each has "**that one thing**" or trait that is unique to only that one grill².

POINTS UP GRILLS

(points protruding upward from the front of the stamp)

- "A" Grill - Covers entire stamp. Points are "up" (protruding up from the front of the stamp); similar essay grills exist;
- "B" Grill - **only four copies exist**, largest grill that doesn't cover entire stamp, points up;
- "C" Grill – **rare**, has 16-17 vertical rows and points "up";

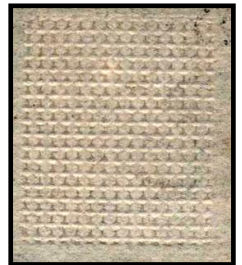


C Grill 16-17 V/Rows

POINTS DOWN GRILLS

(points protruding downward from the back of the stamp)

- "D" Grill - Has 15 vertical rows.




D Grill 15V/Rows

- "E" Grill - Has 14 vertical rows and the points run vertically, like this; ↑↓;



E Grill 14V/Rows

- "Z" Grill - Has 14 vertical rows and the points run horizontally, like this; ;



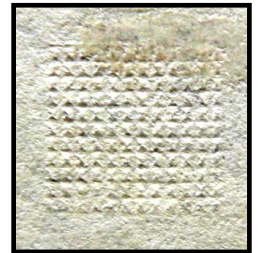
Z Grill

- "F" Grill - Has 12 or 13 vertical rows (usually 12). The smallest 1867-8 grill;



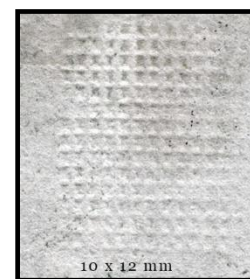
F Grill

- "G" Grill - Used only on the 1869 Issue;



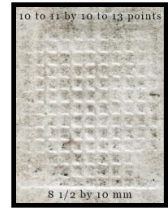
G Grill

- "H" Grill - About the same size and configuration as the "F" grill but only used on 1870 Banknote Issue; below is an H Grill shown relative to the size of the stamp.



H Grills

- "I" Grill - Used only on some 1870 Banknote values, is smaller than the "H" grill, usually 10 vertical rows only;



I Grill

- "J" Grill- Probably not regularly issued, smaller than the H" or "I" but always very heavily impressed such that some points will break through the paper.



J Grill

OG (Old Guy/Gal/Gangster) Grill Measurement – The following describes the methodology typically used to identify grills before newer technologies were developed. Typically a grill should be measured on the back of the stamp. Two methods of grill identification are acceptable. Either you can count the number of grill points (What I normally do) or you can measure the number of millimeters from edge to edge of the grill. When you're dealing with weak or incomplete grills it can be very difficult to distinguish which grill you are dealing with. In these cases you must enhance or "reveal" your grill.

Revealing or Enhancing a Grill - Unless the subject is mint with at least some of its gum, make sure the back of the stamp is clean. Remove any old hinges. Soak, dry, and press the stamp to remove anything that could interfere with observing the grill pattern. Now that the back of your used stamp is nice and clean, can you distinguish the grill pattern? If not, carry on with the next step.

Next Enhancement Step – After cleaning if the grill is still not apparent, lay the stamp face down on a table. Place a thin sheet of paper on top of the stamp. Use onion skin paper which usually works best. **Do not use the point of a pencil.** You risk ripping or damaging the stamp. Take the side of the pencil and gently rub the lead side over the paper. The ridges of the grill on the stamp will make a pattern on the paper. The stamp remains clean and undamaged. Now you have a sheet of paper with the impression of a grill that you can measure. Unfortunately, there are going to be times when the grill pattern is too weak or incomplete to make a firm determination.. In these cases, it's probably safer to assume that you have a less expensive copy. Or you can try a Sign-O-Scope.



Sign-O-Scope (Courtesy D. Klauber)

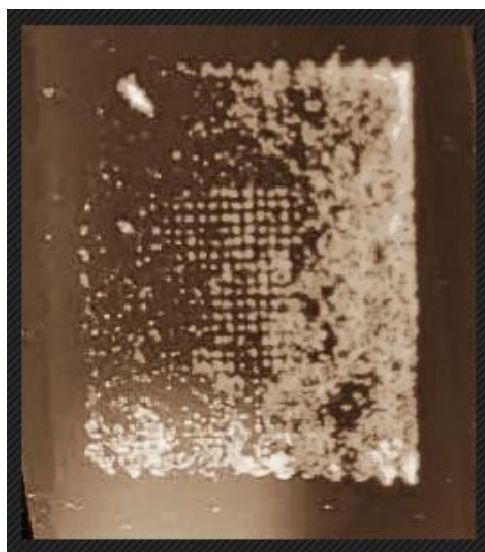
Revealing Grills with a Sign-O-Scope – If you have tried all of the previous methods of enhancing the grill, one other option you have is to utilize some technology to assist. If you have a Philatelic Library near you, there is a possibility that there is one of these items available for you to check out. The SD Philatelic Library I believe has at least 2. Now, first it is important to understand that Sign-o-Scopes typically come with a set or two of vinyl inserts. (See below) It is unfortunate that they 1) don't last forever, 2) are typically thrown away upon opening, 3) Provide little benefit when viewing watermarks. But when used properly they are amazing; they will show, thins and Grills like nothing I have ever used or seen before. In order to reveal grills with a Sign-O-Scope you will need to find or acquire these inserts or you will most likely not be successful with your identification.

Hint: Typically your Editor has a few (loaner) spares.

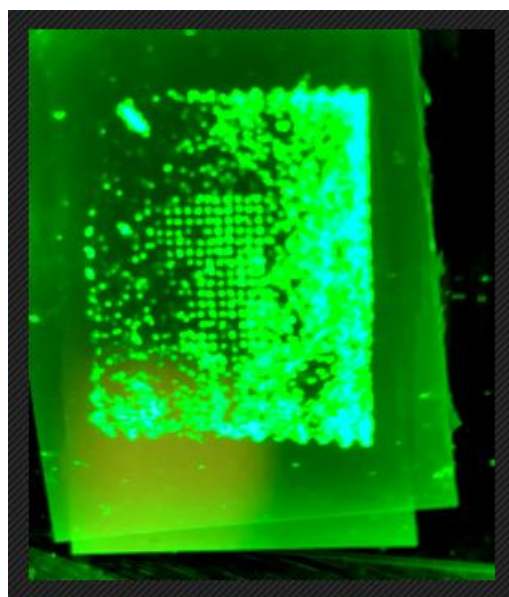


Vinyl Inserts for a Sign-o-Scope

What I learned recently is that the **Sign-O-Scope** is amazing at identifying thins and **grills**. It is important to note that it is essential that you use the vinyl inserts on both sides of the specimen stamp. Be sure to tighten up the wing nut at the bottom of the scope to press the “sandwiched” stamp sufficiently to expose the grill marks more clearly. It may be necessary to adjust the color setting on your scope to make the grill contrast even that much better.



Examples of Grills on a Scott #136 Banknote issue.



Examples of Grills on a Scott #136 Banknote issue.

The previous two examples of grills on a Scott 136 were nearly invisible using any of the other methods. Using the Sign-o-Scope will allow you to clearly count all of the press grill marks both horizontally and Vertically

As always there is no substitute for knowledge – Ed Deming

1. Wikipedia, [https://en.wikipedia.org/wiki/Grill_\(philately\)#cite_note-Bennett-1](https://en.wikipedia.org/wiki/Grill_(philately)#cite_note-Bennett-1)
2. Easy Identification 1867- 1868 Grills, Bill Weiss/Don Denman, [/www.stampsmarter.com/learning/ID_1867_1868Grills.html](http://www.stampsmarter.com/learning/ID_1867_1868Grills.html)
3. <http://www.shaulisstamps.com/tips/Grills.htm>

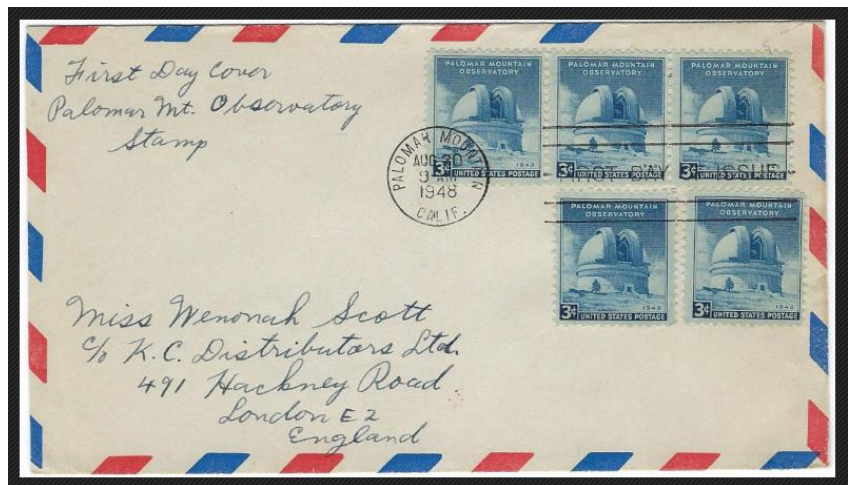
Local Interest

By Bill O'Connor

Old Postmarks of San Diego County; Palomar Mt.



Palomar Mountain - A commemorative stamp was issued August 20, 1948, and post marked at Palomar Mountain. One of the illustrations shown is a first day cover posted to London, England, with the correct postage for airmail delivery using five of the three cent Palomar Mountain stamps.



Palomar Mountain, First Day Cover 1948

Image Courtesy Bill O'Connor

The next is an illustrated cover honoring 60 years of exploration for the observatory. If anyone can add some light on the prediction of Stephen Hawkins, that would be great.

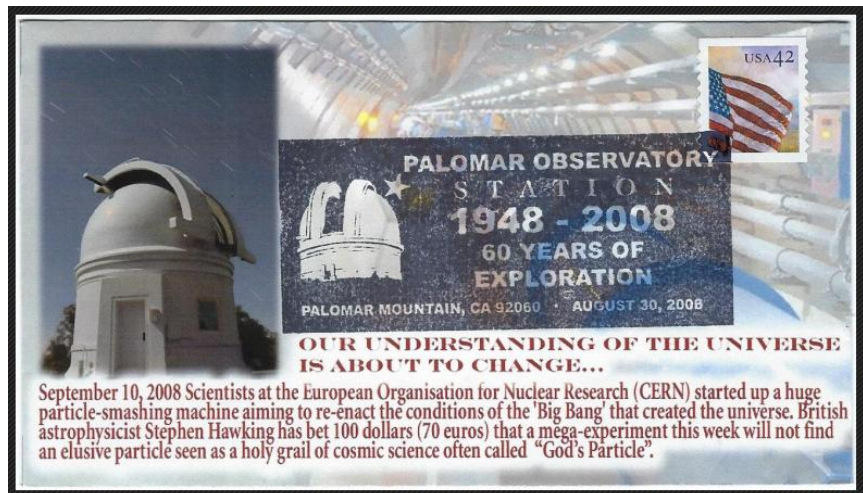


Image Courtesy Bill O'Connor

Additionally, a post card is shown that was posted in 1942. On the back of the card, it is commented that the 200 inch mirror was the largest reflector of its kind in the world.

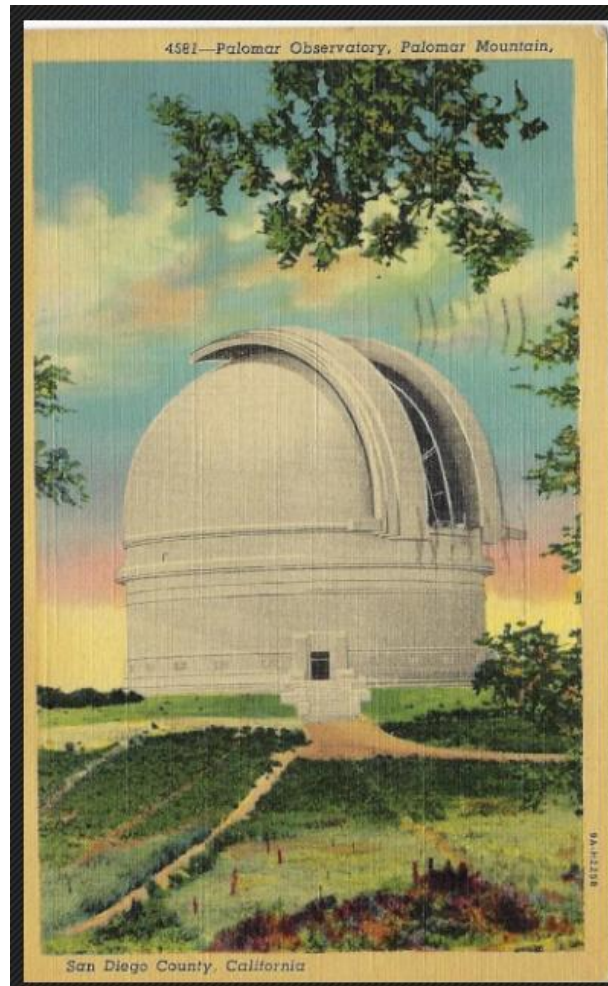


Image Courtesy Bill O'Connor

The post office at Palomar Mountain was established October 19, 1920. Travel East along Highway 76, go beyond Pala, and follow the signs. You will eventually turn left and make your ascent to the mountain. You can cycle if you wish, my wife as done such on a few occasions; I will wait for the next life time

. -- Bill O'Connor

San Diego Philatelic Library

The San Diego Philatelic Library is Currently Closed due to the Pandemic.

The San Diego County Philatelic Library is a not-for-profit philatelic library in Poway, San Diego County, California. Operated by friendly volunteers. Your stamp library consists of approximately 16,000 volumes of books, monographs, catalogs, and periodicals.

Soapbox

By Art Berg

Attractive Stamps or the “Stamp of Approval”



Canada Scott #86 Christmas 1898, Map of British Empire
(Canada's First Christmas Stamp)

Image Courtesy [Art Berg](#)

Purpose of column is to focus on stamps that are very attractive, very different or just cause you to wonder. I welcome your candidates for inclusion.

Canada Scott #86, cancelled February 9, 1899 in Berlin, Ontario is today's focus. If you search a modern atlas this town is not listed. Here's the story.

This area of Ontario was original settled by Mennonites leaving Pennsylvania in the late 1790s then by predominantly German speaking people starting in the 1820s. At the start of WW1 the area around Berlin was still 70% ethnic German (only 8% had been born in Germany). In May 1916 a referendum was passed to change the name of the community to Kitchener (Lord Kitchener was killed in 1916 and was a British war hero). Today Kitchener is a city of over 230,000 people. The Kitchener metro area is over 500,000 people. You can learn a lot from a stamp!

Soapbox

By D Klauber

An Artist in our Midst



Postage Stamp Collage Art



Collage Postage Stamp Art (California Bear Flag)

Image Courtesy **Bill Wacenske**

Recently one of our Poway Stamp Club members, **Bill Wacenske**, utilized this newsletter to request that members consider sending their damaged stamps to him to use in a project he was working on. The result of that request can be seen above. The Editor commends Bill on his solution to Covid-19 isolation. It is apparent that much work was put into this piece. The editor recognized quite quickly Bills attention to detail. My absolute favorite part of the collage is the bears “Fuzzy Foot.” Everyone who looks at the collage notices the unique foot.



Detail of Bear “Fuzzy Foot” Image Courtesy D. Klauber

What is a Collage – A collage consists of the attachment of materials (In this case, Postage Stamps) to a surface. The Art form, according to the APS has been around for hundreds of years in the form of Decoupage a craft that is typically in the form of a 3-dimensional object. Our subject above is a 2-dimensional work and would be better described as a “Collage”. A collage differs from decoupage in that it is typically not lacquered and is created on flat surfaces. This interesting art form is comparatively new only being recognized as an art form in the twentieth century.



Details of “Bear Hump” collage

According to Russ Hahn¹ in his article **Postage Stamp Collage Art**;

“Using stamps as the primary decorative material is just one of the several ways two-dimensional collages are created, but since the mid 1800s the creation of postage stamp collages has played an important role in the development of artistic expression as well as the history of stamps and stamp production.”

Hahn characterizes that with postage stamp collage art the defining word is “art.” He further defines the form as *“Works created primarily with postage stamps, new or canceled, to portray an image or purposeful design.”* The definition is not about the quality of the art collage, it’s about how the stamps are used to create the collage.

The stamps must be the centerpiece and the work must be an original design or an image based on a photo, symbol, or seal. The defining consideration is that postage stamps are the essence of the collage, not just a part of the work or simply a pasting of stamps as in a “montage.”



More Foot Details

Postage stamp collage art as defined here may contain a small portion of color paper to enhance backgrounds or watercolor paint for expansive areas of sky, water, snow, and sand. However, if paint is used, the art world rules it a mixed media art work.

Additional Postage Stamp Collage art can be found online in at www.stamps.org/AP-Album.

Thanks again Bill for bringing this fun and interesting philatelic endeavor to our attention. Perhaps you may even encourage others to attempt a different and more creative aspect of our hobby.

Endnotes

1. Postage Stamp Collage Art Russ Hahn, American Philatelist, December 2012.



Flag of California, Adopted Feb 3, 1911



Member Classifieds

If you would like to have a **Free** advertisement in the PSC Newsletter, please email: PSCphilately@gmail.com

For Sale: Want lists serviced for stamps of Puerto Rico. Fill holes in your collection with mostly lower catalog value stamps. See Bob at a PSC meeting or call 858-278-7873

Bob Schappelle

For Sale: Worldwide sets, Singles and Souvenir sheets. 60% off Catalog to all Club Members. Offer valid anywhere you see me. Phone: 714-476-3698 Email: CBCSTAMP@AOL.com.

Chuck Bigler.

For Sale: \$525. Cat of worldwide souvenir sheets, some high Cat machins. \$100. Call **Duane** at 858-735-3800


Duane Pryhoda

For Sale: Stamps at Bargain Prices, Come and see my Stock. By appointment so please call to set up a time. Home Phone: 858-271-0262 Mobile Phone: 858-449-3047 **Al Kish**

Wanted: Topicals on the following subjects: spiders, trilobites, Shih Tzu dogs, lunar new year [year of, etc.], paintings by Manet, Delacroix, Gericault, David, Brueghel. U.S. 1893 Columbian issue errors, freaks and oddities. Top dollar paid for Columbian plate varieties especially double transfers. **For Sale:** large selection of used and mint Australia, Great Britain, and Japan including single stamps and souvenir sheets at a fraction of catalog value. Email your want list to Bob McArthur (rmcarthur@cox.net) or bring to a PSC meeting.” **Bob McArthur**

Wanted: Puerto Rico Town cancels. Bring to meeting. Will trade or buy. See member **M. Marti** PSC # 410.

Wanted: Imperial China, PRC, Manchukuo, Mongolia, U.S. Double Transfers/Re-entries, U.S. 19th Century Proofs and Essays. U.S. 19th Century. See D & T Klauber at Wednesday PSC meeting or contact us at Indysmama@gmail.com.



Stamp News:



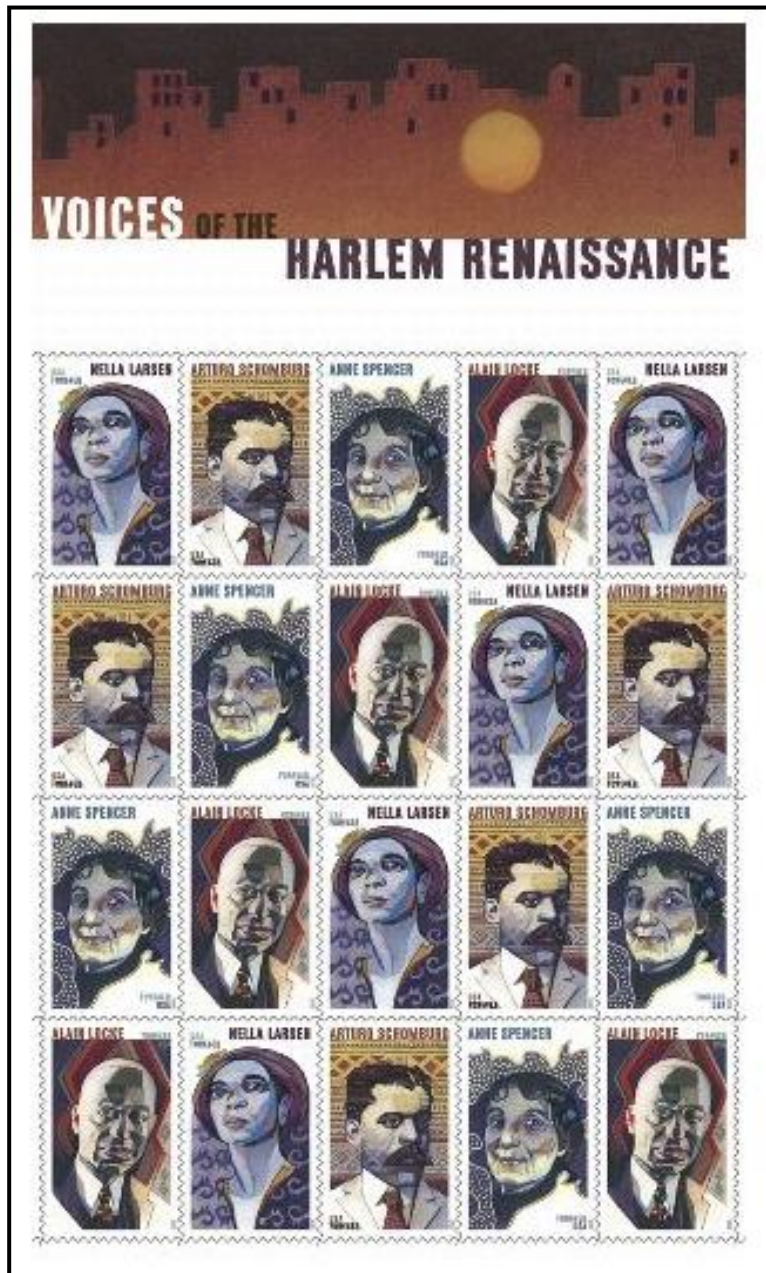
New Stamps 2020 United States Postal Service Stamps

The following Issue dates, stamp subjects and formats are tentative and subject to change. They are based on Linn's listing of projected 2020 releases.



American Gardens Forever Stamps May 13 | Winterthur, DE

The Postal Service celebrates the beauty of American gardens. This pane of 20 stamps features 10 different photographs of botanic, country estate and municipal gardens taken between 1996 and 2014. The gardens include: Biltmore Estate Gardens (North Carolina); Brooklyn Botanic Garden (New York); Chicago Botanic Garden (Illinois); Coastal Maine Botanical Gardens (Maine); Dumbarton Oaks Garden (District of Columbia); The Huntington Botanical Gardens (California); Alfred B. Maclay Gardens State Park (Florida); Norfolk Botanical Garden (Virginia); Stan Hywet Hall & Gardens (Ohio); and Winterthur Garden (Delaware). Art director Ethel Kessler designed the stamps with existing photographs by Allen Rokach.



May 21, Voices of the Harlem Renaissance. Four (55¢) forever commemorative stamps, pane of 20; Nella Larsen, Arturo Alfonso Schomburg, Anne Spencer, Alain Locke; BCA; New York, NY 10199; USPS item No. 476404 (pane), 476416 (FDC set of four at \$3.96), 476421 (color postmark FDC set of four at \$6.80).



June 13, Enjoy the Great Outdoors. Five (55¢) forever commemorative stamps, pane of 20; building a sand castle, canoeing, hiking, biking and cross-country skiing; AP; Incline Village, NV; USPS item No. 572804 (pane), 572816 (FDC set of five at \$4.95), 572821 (color postmark FDC set of five at \$8.50).

*New Stamp - Stamp images provided by the United States Postal Service.
Copyright © 2019 USPS. All Rights Reserved.*