



# PLAYBILL




# ROMEO & JULIET

WRITTEN BY **WILLIAM SHAKESPEARE**

DIRECTED BY **EMILY SWENSKIE**

**APRIL 10-20**

QUAPAW QUARTER UNITED  
METHODIST CHURCH

 [actorstheatrelr.org](http://actorstheatrelr.org)

   [actorstheatrelr](https://www.instagram.com/actorstheatrelr)

**ACTORS THEATRE OF LITTLE ROCK**  
PRESENTS

**ROMEO &  
JULIET**

WITH

Ivy McGrew  
Rylee Bolls  
Shea Barham  
Georgeann Burbank  
Amelia Migliore

Paige Carpenter  
Emory Molitor  
B. Dumas  
Shaina Tippitt  
Darby Lytle

Miki Gaynor  
Savannah Price  
Lexi Brooks  
Dani Carney

**Costume Designer**  
Jamie Hall

**Assistant Costume Designer**  
Todd Breaux

**Scenic Designer**  
Mark A. Burbank

**Lighting Designer**  
Sid McGough

**Sound Designer**  
Steven Jones

**Properties Manager**  
Jordan Hancock

**Stage Manager**  
Erin Bagley

**Dramaturgy**  
Darby Lytle

**Choreographer**  
Lexi Brooks

**Fight Choreographer**  
Xander Udochi

**Producer**  
Mark A. Burbank

**Assistant Director**  
Taylor Fulgham

**Director**  
Emily Swenskie

# CAST

---

---

Romeo.....	IVY MCGREW
Juliet.....	RYLEE BOLLS
Mercutio/Prince Escalus.....	SHEA BARHAM
Benvolio/Friar Lawrence.....	GEORGEANN BURBANK
Nurse/Sampson.....	AMELIA MIGLIORE
Capulet.....	PAIGE CARPENTER
Lady Capulet/Apothecary.....	EMORY MOLITOR
Paris/Montague.....	B. DUMAS
Tybalt.....	SHAINA TIPPITT
Lady Montague/Friar John.....	DARBY LYTLE
Peter/Balthazar/Chorus.....	MIKI GAYNOR
Gregory/Servant.....	SAVANNAH PRICE
Abram/Mercutio's Page/Citizen.....	LEXI BROOKS
Swing.....	DANI CARNEY

## UNDERSTUDIES/SWINGS

Understudies/Swings never substitute for the listed players unless a specific announcement is made at the time of appearance.

For Romeo.....	GEORGEANN BURBANK
For Juliet.....	LEXI BROOKS
For Capulet.....	B. DUMAS
For Paris/Montague.....	SHAINA TIPPITT
For Nurse.....	DARBY LYTLE
For Lady Capulet.....	MIKI GAYNOR
For Mercutio/Tybalt.....	SAVANNAH PRICE
For Benvolio/Lady Montague/ Peter/Gregory/Abram.....	DANI CARNEY

# PRODUCTION/CREATIVE

---

---

Producer..... MARK A. BURBANK  
Director..... EMILY SWENSKIE  
Assistant Director..... TAYLOR FULGHAM  
Costume Designer..... JAMIE HALL  
Assistant Costume Designer.....TODD BREAUX  
Scenic Designer..... MARK A. BURBANK  
Lighting Designer..... SID MCGOUGH  
Sound Designer.....STEVEN JONES  
Stage Manager.....ERIN BAGLEY  
Dramaturgy.....DARBY LYTLE  
Properties Manager.....JORDAN HANCOCK  
Choreographer.....LEXI BROOKS  
Fight Choreographer..... XANDER UDOCHI  
Scenic Construction..... MARK A. BURBANK,  
DEAN BURBANK,  
GEORGEANN BURBANK  
Scenic Artistry.....GEORGEANN BURBANK



# WHO'S WHO

---

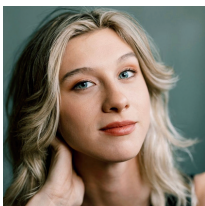
---



## IVY MCGREW

Romeo

Ivy McGrew is excited to be making their Actor's Theatre debut! Ivy holds a BA in Theatre from Hendrix College and studied at The Neighborhood Playhouse in NYC. Previous stage roles include Corduroy (Arkansas Museum of Fine Arts), Marianne (Constellations), and Vern (Five Lesbians Eating a Quiche). Thanks to family and friends for all their love and support! Enjoy the show!



## RYLEE BOLLS

Juliet

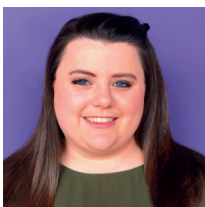
The stage is set, the audience hushed in anticipation – it's Rylee Bolls' debut at The Actors Theatre! Having mesmerized audiences on screen for the past five years, Rylee is excited to embrace the thrill of live performance again and get back to the roots of acting! A special thank you to her Mom, Papa, and incredible inner circle for all their love and support. Now ready yourself to witness the magic as the stage becomes a canvas for a captivating sisterhood of star-crossed lovers!



## SHEA BARHAM

Mercutio/Prince Escalus

Shea W. Barham is excited to make her Actors Theatre debut! Favorite credits include Miss Honey (Matilda), Dorothy (The Wizard of OZ), and Gertrude McFuzz (Seussical: The Musical) all with Wildwood Park for the Arts. Shea holds an MM degree in Opera Performance from Oklahoma City University. She serves as the Lower and Early Childhood School music teacher at Pulaski Academy. She would like to thank her husband, Ben, for his never-ending love and support!



## GEOREGANN BURBANK

Benvolio/Friar Lawrence

Georgeann is elated to be back with Actors Theatre of Little Rock performing the timeless words of the bard. She holds a B.A. in Theatre from HSU with many memorable roles including but not limited to Sonia (Vanya and Sonia and Masha and Spike), and Rosalind Franklin (Photograph 51). She currently lives, laughs, loves in North Little Rock. Other favorite credits include: Celia (As You Like It), Puck (A Midsummer Night's Dream), Grumio (Taming of the Shrew) Nellie Lovette/Ensemble (Sweeney Todd 2018/2023), Cindy Lou Who (Who's Holiday), and Lisa (Mamma Mia!)

# WHO'S WHO

---

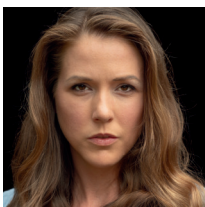
---



## AMELIA MIGLIORE

Nurse/Sampson

Amelia Migliore (she/her) is thrilled to be back on the Actors Theatre stage! Some favorite local credits include Beggar Woman (Sweeney Todd), Joy (Cinderella), and Dogberry (Much Ado About Nothing). In her spare time, Amelia enjoys reading and taking her rescue dogs - Gorgonzola & Havarti - to the dog park. Enjoy the show!



## PAIGE CARPENTER

Capulet

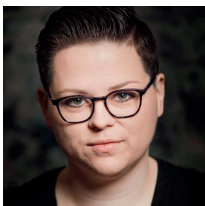
Paige Carpenter (Capulet) wears many theatrical hats. After earning a degree focusing on Shakespeare from Rhodes College in Memphis, she worked as a performer and scenic carpenter for the AR Arts Center Children's Theater from 2014 to 2019 and returned for their inaugural, post-renovation production of The Very Hungry Caterpillar last spring. She has performed and worked behind the scenes in numerous other theaters locally and as far away as Oregon. Favorite recent roles include Matilda (The Trunchbull), Amahl & the Night Visitors (Mother), and Boeing Boeing (Judith). On any given week these days Paige works as an SP for UAMS and ACH, helps with sets at The Rep, and sings at St. James UMC as part of their choir. She is excited to get back to her roots and make her Actors Theater Little Rock debut as part of this daring production.



## EMORY MOLITOR

Lady Capulet/Apothecary

Emory Tyson Molitor is excited to join this cast and crew in her ATLR debut! You may have seen Emory in Godspell (ACT), Beauty & the Beast (Murry's DP) or Spamalot (Wildwood). Emory holds a double BA in Vocal Music and Theater/Speech from ATU and an MS in Developmental Therapy from HSU. When not performing, Emory teaches voice and piano lessons at Starling Music Studio and is soprano section leader at FUMC-LR. Thank you for supporting live theatre!



## B. DUMAS

Paris/Montague

B. is thrilled to be back on stage with ATLR! She proudly holds a BA in Theatre Arts from Henderson State University. Recent credits include The Breach (The Rep), As You Like It (ATLR), The Rocky Horror Show (ATLR), A Midsummer Night's Dream (ATLR), Kinky Boots (TST), and Clue (TST).

# WHO'S WHO

---

---



## SHAINA TIPPITT

Tybalt

Shaina Tippitt (she/her) is proud to be joining Actors Theatre of Little Rock in Romeo and Juliet! Shaina was most recently as Susy (Wait Until Dark), Theresa (Circle Mirror Transformation), and her personal favorite, Vanda (Venus In Fur). Shaina has a BA in Theatre Arts from Henderson State University.



## DARBY LYTLE

Lady Montague/Friar John

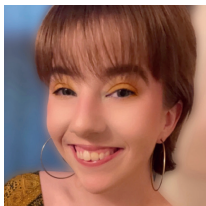
Darby Lytle (Lady Montague/Friar John/US Nurse/DRAMATURG) is a composition teacher at Virtual Arkansas with an M.A. in literature from UCA. She is delighted to make her full-length production debut with Actors Theatre of Little Rock after appearing in their Bard at the Bar production last year. Darby has been a board member of the Arkansas Community Theatre Association and the Conway Community Arts Association. Previous credits include Vinegar Tom (CAT Collective), Cabaret (The Studio Theatre), and The Importance of Being Earnest (The Lantern Theatre). She would like to thank her friends and family for their continued support of her theatrical endeavors, especially Bob!



## MIKI GAYNOR

Peter/Balthazar/Chorus

North Little Rock native Miki Gaynor (she/her) is always thrilled and aspires to be on the theater stage! She began her theater career in 2018. When on stage she is acting, singing or hosting/emceeing. Her latest theater credits include Alma (Yellowman), Mom (Corduroy) and Faye (Skeleton Crew). When not acting, Miki is building her brand of handmade high vibrational jewelry (Miki Magick Beads & Crystals) as well as spreading love, hugs and emotional support as a cuddle therapist (Cuddly LLC Professional Cuddling).



## SAVANNAH PRICE

Gregory/Servant

Savannah Price (she/her) is excited to make her Actors Theatre debut! Previous credits include Judy Boone (The Curious Incident of the Dog in the Night-Time), Bella Manningham (Gaslight), and Viola (Twelfth Night). Savannah is a recent graduate of Arkansas State University with a BA in Theatre, Emphasis in Acting. "We know what we are, but know not what we may be."

# WHO'S WHO

---

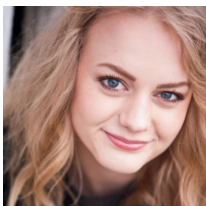
---



## LEXI BROOKS

Abram/Mercutio's Page/Citizen

Lexi Brooks (she/her) is excited to join the cast of Romeo and Juliet! Some of her previous credits include Dragon U/S (Dragons Love Tacos), Wednesday U/S (The Addams Family), Jenny (The Threepenny Opera), Olivia (Twelfth Night), and Glory (Almost, Maine). Enjoy the show!



## DANI CARNEY

Swing

Dani Carney is happy to be joining ATLR for Romeo and Juliet! Previous Shakespeare credits include Helena (A Midsummer Night's Dream). Dani is a playwright with a background in theatre for social change. She is currently writing a play about her neighbor.

# WHO'S WHO

---

---

## EMILY SWENSKIE

Director

Emily Swenskie (She/Her) is an artist, educator and professional make-believer and she is thrilled to be making her Arkansas directing debut at Actors Theatre of Little Rock. She is a recent graduate of Texas Tech University with her Master of Fine Arts in Theatre Performance and Pedagogy. When not performing, she loves to use her skills as an intimacy choreographer, dramaturg, musician, and teacher. Previous credits include Emily (The Complete Works of William Shakespeare Abridged), Emily (Shakespeare Cabaret) Godmother (Cinderella) Usherette/Showgirl (The Producers), Susan (Vinegar Tom), Wendla Bergman (Spring Awakening). She would like to thank her husband for his endless love and support. "We are such stuff as dreams are made on, and our little life is rounded with a sleep." — William Shakespeare

## ERIN BAGLEY

Stage Manager

Erin is so proud to be working with Actors Theatre of Little Rock again after Stage Managing TINY BEAUTIFUL THINGS. Past technical credits include Assistant Stage Manager and Assistant Director for THE SERVANT OF TWO MASTERS, Stage Manager for I THINK YOU THINK I LOVE YOU, Director for THE UNIVERSAL LANGUAGE, Music Director for CHI MU FANGIRLS, all at OBU. Her favorite roles onstage consist of Mary Poppins (Mary Poppins), Scuttle (The Little Mermaid), Mrs.White (CLUE), Beto (Gianni Schicci), and Veruca Salt (Charlie and The Chocolate Factory) Erin holds a B.F.A in Musical Theatre from Ouachita Baptist University. Please enjoy Romeo & Juliet!

# WHO'S WHO

---

---

## **MARK A. BURBANK**

Executive Producing Artistic Director

Mark A. Burbank is a multi-hyphenate creative (producer/ director/ performer/designer), educator, and activist. They hail from Little Rock, AR, but have directed, performed, and taught around the country. Mark is also the Co-Founder and Producing Artistic Director of Actors Theatre of Little Rock. Mark is no stranger to the stage having over 80 production credits ranging from community, education, and professional productions. Previously, they were the Associate Artistic Director and Executive Director of The Studio Theatre, where they have directed and produced eleven productions, including Songs for a New World, Mamma Mia, A Christmas Story: the musical, and Dogfight. Other directing projects include Parade and Mary Poppins at the Royal Theatre, Young Frankenstein with the Community Theatre of Little Rock, and Johnny Appleseed with Missoula Children's Theatre. Mark spent the covid year teaching theatre at Little Rock Central High School, and has taught classes and workshops in acting, dance, singing, and auditioning with schools and theaters around the country. Mark is also an accomplished designer, choreographer, musical director, and actor. Favorite acting credits include Tony (West Side Story), Squidward (The Spongebob Musical), Anthony (Sweeney Todd), Prince Dauntless (Once Upon A Mattress), Jeffery (Godspell), Prince Topher (Cinderella), Enjolras (Les Miserables), and Rolf (The Sound of Music). Mark is a graduate of the University of Central Arkansas.

## **SID MCGOUGH**

Technical Director

Sid McGough, a proud Hendrix College alum from Texarkana, TX, currently holds the dual roles of Lighting Designer for Romeo & Juliet and Technical Director for Actors Theatre of Little Rock. Since Season Zero, Sid has demonstrated an unwavering commitment to the theatre's artistic vision by contributing creativity and expertise. Sid's most recent works with ATR include Lighting Design for Spring Awakening, Lighting Design for The Mountaintop, and Scenic & Lighting Design for Black Nativity. Beyond the technical realm, you may find Sid at concessions, where friendly conversations about theatre involvement are always welcome. Connect with Sid and immerse yourself in the magic of the performance!

## **JAKE COFFMAN**

Graphic Designer

Jake Coffman is an Arkansas native with a long history in the Arts, including a background in singing, graphic design, and marketing. He received his Bachelor of Arts in Music and Mass Communications from Ouachita Baptist University, and is a classically trained vocalist. He currently serves as the Graphic Designer for Actors Theatre of Little Rock, and is also the Director of Marketing and Branding at Nexus Coffee and Creative in downtown Little Rock. Jake also has a history on stage! Past favorite stage credits include Billy Crocker (Anything Goes), The Escapologist (Matilda the Musical), and Larry the Lobster (The Spongebob Musical).

# SPECIAL THANKS

---

---

## SPECIAL THANKS TO

Dean Burbank, Rita Woodward, Paige Martin Reynolds, University of Central Arkansas, Hendrix University, Ouachita Baptist University, Jonathan Fili, Janelle Von Storch, Frank Mott, Arkansas Repertory Theatre, Anthony McBride, Todd Breaux, Loblolly Creamery, Nicole Neiman with AR Style

## ACTORS THEATRE OF LITTLE ROCK BOARD OF DIRECTORS

Darlane Mull, **President**  
Karena Malott, **Vice President**  
Stephanie Reeves, **Secretary**  
Mark Burbank  
Mandy Warford  
Marion Humphrey Jr.  
Caelon Colbert  
Amelia Farlow  
Janelle Von Storch  
Jonathan Fili

## ACTORS THEATRE OF LITTLE ROCK STAFF

Mark A. Burbank, **Executive Producing Artistic Director**  
Sid McGough, **Technical Director**  
Jake Coffman, **Graphic Designer**

## INVEST IN THE ARTS!

There are many opportunities to support ACTORS THEATRE OF LITTLE ROCK with your gifts - a vital part of keeping our unique company alive!

All donations are tax deductible and welcome at any time.

They can be made by check to ACTORS THEATRE OF LITTLE ROCK or by emailing [info@actorstheatrelr.org](mailto:info@actorstheatrelr.org). We can also be found on PayPal and Venmo.



# BECOME A SPONSOR!

---

---

Become a production sponsor of Actors Theatre of Little Rock!

Sponsoring comes with perks such as performance tickets, advertisements in our playbills, cross promotion marketing, and more!

## PRODUCTION SPONSORSHIP TIERS

### PATRON'S CIRCLE

**\$250**

Receive a quarter page ad in our program and 2 reserved seats to one performance.

### ACTOR'S CIRCLE

**\$500**

Receive a half page ad in our program, social media shoutouts, and 4 reserved seats to one performance.

### DESIGNER'S CIRCLE

**\$1,000**

Receive a half page ad in our program, social media shoutouts, shoutout at the beginning of the show, 6 reserved seats to one performance.

### DIRECTOR'S CIRCLE

**\$2,000**

Receive a producing credit on the playbill, shoutout at the beginning of the performance, a full page ad in the program, social media shoutouts, and a 10 seat block to a performance.

### PRODUCER'S CIRCLE

**\$5,000**

Presenting Sponsor of a production, full page ad in our program, social media shoutouts, shoutout at the beginning of the show, Comes with a 15 seat block of tickets.

# BECOME A SPONSOR!

---

---

Become a sponsor of Actors Theatre of Little Rock! Sponsoring comes with perks such as performance tickets, advertisements in our playbills, cross promotion marketing, and more!

## SEASON SPONSORSHIP TIERS

### PLAYWRIGHT'S CIRCLE

**\$1,500**

Receive a quarter page ad in our season programs and 8 reserved seats to be used during the season.

### EXECUTIVE PRODUCER'S CIRCLE

**\$3,000**

Receive a half page ad in our season programs, social media shoutouts, and 12 reserved seats to be used during the season.

### EXECUTIVE DIRECTOR'S CIRCLE

**\$9,000**

Receive a half page ad in our season programs, social media shoutouts, shoutout at the beginning of each show, 24 reserved seats to be used during the season.

### ARTISTIC DIRECTOR'S CIRCLE

**\$15,000**

Receive a producing credit on all playbills, social media shoutouts, shoutout at the beginning of each performance, a full page ad in the season programs, and 48 reserved seats to be used during the season.

### ACTORS THEATRE ANGEL

**\$30,000**

Presenting Sponsor of the season, full page ad in our program for the season, social media shoutouts, shoutout at the beginning of every show, and 60 reserved seats to be used during the season.

**COMING UP NEXT**

---

---



**MAY** 29 -  
**JUNE** 8

A large graphic featuring the number "26" in a very large, white, sans-serif font. Below the number, the word "PEBBLES" is written in a smaller, white, sans-serif font. The number and text are surrounded by numerous dark grey, heart-shaped pebbles of various sizes, scattered across the dark blue background.

**26**  
**PEBBLES**

**INSPIRED BY INTERVIEWS FROM THE  
COMMUNITY OF NEWTOWN AFTER THE  
EVENTS OF SANDY HOOK**

WRITTEN BY **ERIC ULLOA**

DIRECTED BY **HOPE HARGROVE**

# SEASON 2



**BREAKING BOUNDARIES**

[actorstheatrelr.org](http://actorstheatrelr.org)

# THE OTHER SEASON



## THE OTHER SEASON



This fan-favorite, pop-up Shakespeare program is back for Season 2!

JUNE & SEPTEMBER



We are kicking off our cabaret series with a spooky, Halloween-themed cabaret, "House of Villains".

OCTOBER



COMMUNITY  
CONNECTIONS &  
CONVERSATIONS

This series is meant to foster true conversations with our community.

MARCH JULY & OCTOBER



Our "Plays in Progress Series" is launching this year, a play development series for local playwrights.



The Artists Lab focuses on fostering new works, exploring devised and experimental theatre, and pioneering original performance projects.

# ADVERTISEMENTS

---

---



## love without exception

Worship: Sundays at 11:00 a.m.  
1601 S Louisiana LR AR 72206

Office hours: 8:30a-12:30p M-Th  
501-375-1600 office@qqumc.org  
www.qqumc.org



First and third weekends  
Fridays - 2-5  
Saturdays - 9-4  
Cash or Card

The best little thrift store you never heard of  
We love to make deals!

# ADVERTISEMENTS

---

---

## ADVERTISE WITH US!

Place an ad in our playbill! These ads are placed in the production's playbill throughout the run of the show, and also live forever on our website, even after the show run ends, on our Playbill webpage!

Email us at **[info@actorstheatrelr.org](mailto:info@actorstheatrelr.org)**  
for more information!