



**Your Manufacturing Partner
for Aluminum Fence and Railing**



DELTA ALUMINUM (THAILAND) CO., LTD.

Thailand Factory: 500 MOO 4, T.U Thai, A. U Thai, Ayutthaya 13210, Thailand
Vietnam Factory: Lot L2.2, L2.3, L2.4, Do Son Industrial Zone, Hai Phong, Vietnam
Email: inquiry@aluminumdelta.com

www.aluminumdelta.com





Thailand

Vietnam

COMPANY PROFILE

ALUMINUM FENCE AND RAILING MANUFACTURER

Delta Aluminum (Thailand) Co., Ltd is part of the BestYard Group, which specializes in manufacturing metal fencing and railing with over 15 years of experience in the industry.

BestYard Group currently has two production sites, Delta Aluminum (Thailand) Co., Ltd and Vietnam Beta Aluminum Company Limited, located in Thailand and Vietnam respectively.

Delta Aluminum (Thailand) Co., Ltd has 7.5 acres of land, 120,000 square feet of factory space and 150 workers. With two aluminum extrusion lines, one fully automatic coating line, and four welding machines, Delta is able to produce 6,000 tons of metal fences, metal gates, and metal railings per year.

Delta is able to pass all factory audits by The home depot, Costco, Lowes, Menards, and has 2604 coating certification.

Our products have been shipped all over North American, Australian, Asian market and supplied to some big names in fencing, railing industry for more than 15 years. We extend our sincere invitation to all potential customers to establish honest and mutually profitable business relationship.



FORGET SEASONAL UPKEEP



ELIMINATE THE GUESSWORK



INNOVATE WITHOUT WASTE



ENJOY PEACE OF MIND





Why Delta Aluminum

Over 15 years of experience in the industry.

Two factories, located in Thailand and Vietnam respectively.

A wide variety of design options for fencing, railing and gates.

OEM for some of the biggest names in the industry.

Own aluminum extrusion lines.

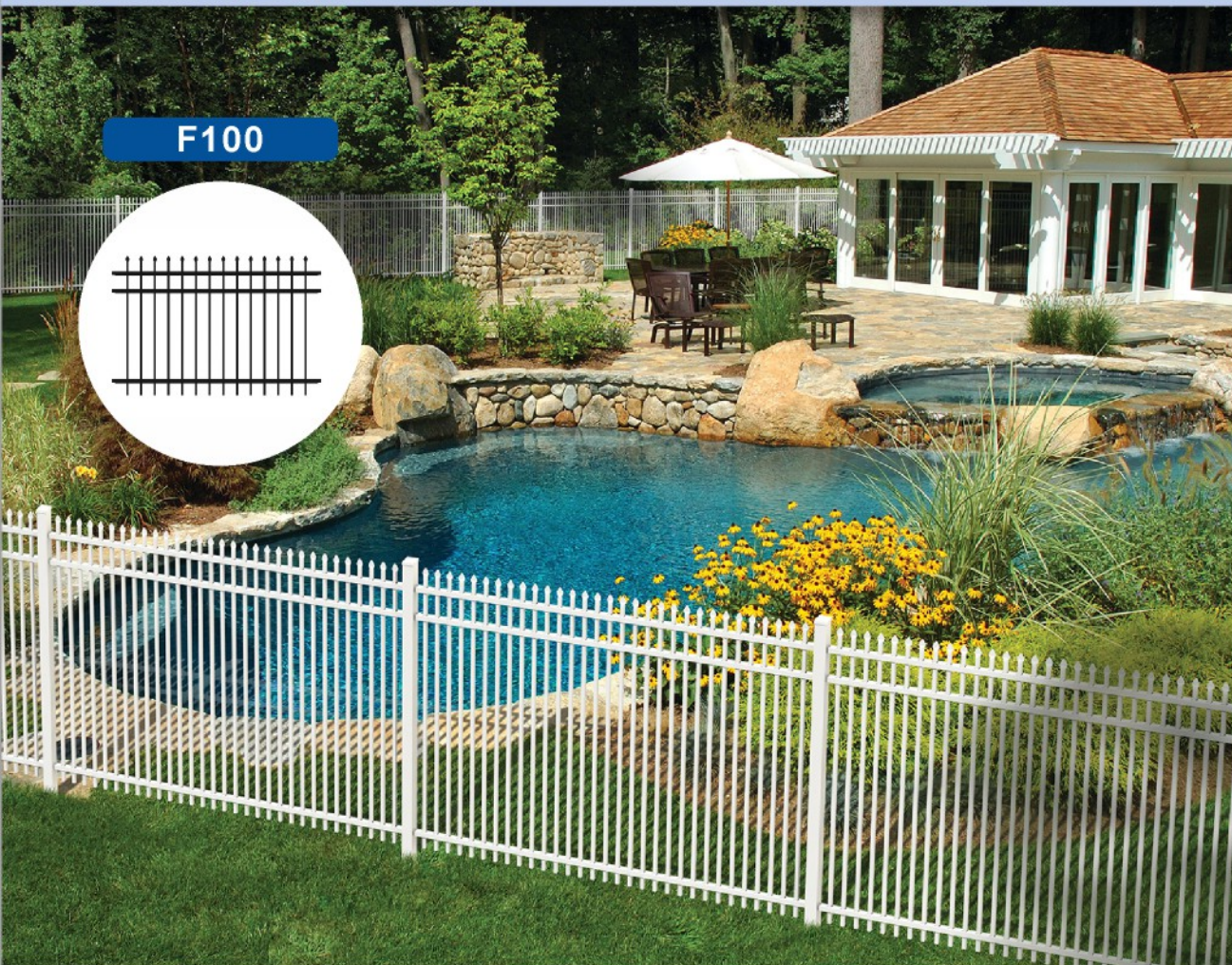
Deep customized powder coating line for fence products.

AAMA 2604 standard AKZO Nobel powder coating certification.

Pass all factory audits by The home depot, Costco, Lowes, and Menards.

Why Aluminum is Better than Steel

| PROPERTY | ADVANTAGE |
|---------------------|---|
| Corrosion-resistant | Aluminum fence lasts FOREVER without fading, rusting or repainting |
| Aesthetics | Aluminum fence is connected to punched posts for a beautiful aesthetic look |
| Strength | Aluminum has a very good strength to weight ratio |
| low cost | Aluminum is 1/3 the weight of steel making it less expensive to manufacture, ship, handle and install |
| Flexibility | Aluminum extrusions offer total design flexibility with unlimited custom options |
| Eco-friendly | Aluminum is easily and valuably recyclable and routinely processed into new extrusions |



F100



F200

Size options:

| | | | | |
|--------------|--|-------------|-----------------|------------|
| Material | Aluminum 6063 T5 | | | |
| Surface | AAMA 2604 standard AKZO powder coating | | | |
| Panel height | 4ft | 5ft | 6ft | Customized |
| Panel length | 6ft | 7ft | 8ft | Customized |
| Picket size | 5/8" x 5/8" | 3/4" x 3/4" | 1" x 1" | |
| Rail size | 1" x 1" | 1" x 1.5" | 1.625" x 1.625" | |
| Post size | 2" x 2" | | 2.5" x 2.5" | |

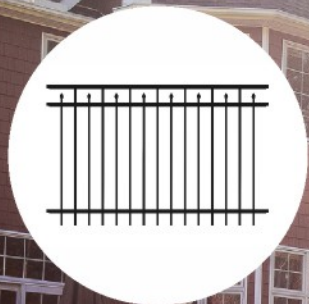
| | | | | |
|---------------|-------|-------|--------|------------|
| Color Options | Black | White | Bronze | Customized |
|---------------|-------|-------|--------|------------|

Specifications:

| | RESIDENTIAL | COMMERCIAL | INDUSTRIAL |
|----------------|---|---|---|
| Picket | 5/8" x 5/8" (15.8 x 15.8 mm) 0.050" (1.3 mm) thickness | 3/4" x 3/4" (19 x 19 mm) 0.050" (1.3 mm) thickness | 1" x 1" (25.4 x 25.4 mm) 0.062" (1.6 mm) thickness |
| Rail | 1" x 1" (25.4 x 25.4 mm) 0.055" (1.6 mm) top wall 0.082" (2.1 mm) side wall | 1" x 1.5" (25.4 x 38.1 mm) 0.055" (1.6 mm) top wall 0.082" (2.1 mm) side wall | 1.625" x 1.625" (41.3 x 41.3 mm) 0.055" (1.6 mm) top wall 0.082" (2.1 mm) side wall |
| Picket Spacing | 3-13/16" (96.8 mm) | 3-15/16" (100 mm) | 3-31/32" (100.8 mm) |
| Material | 6063 T5 Aluminum Alloy with AKZO Powder coating | | |
| Size | 6' or 8' wide x 48", 54", 60" or 72" high | | |
| Color | Black, White, Bronze, Customized | | |



F300



F400



Size options:

| | | | | |
|--------------|--|-------------|-----------------|------------|
| Material | Aluminum 6063 T5 | | | |
| Surface | AAMA 2604 standard AKZO powder coating | | | |
| Panel height | 4ft | 5ft | 6ft | Customized |
| Panel length | 6ft | 7ft | 8ft | Customized |
| Picket size | 5/8" x 5/8" | 3/4" x 3/4" | 1" x 1" | |
| Rail size | 1" x 1" | 1" x 1.5" | 1.625" x 1.625" | |
| Post size | 2" x 2" | | 2.5" x 2.5" | |

| | | | | |
|---------------|-------|-------|--------|------------|
| Color Options | Black | White | Bronze | Customized |
|---------------|-------|-------|--------|------------|

Specifications:

| | RESIDENTIAL | COMMERCIAL | INDUSTRIAL |
|----------------|---|---|---|
| Picket | 5/8" x 5/8" (15.8 x 15.8 mm) 0.050" (1.3 mm) thickness | 3/4" x 3/4" (19 x 19 mm) 0.050" (1.3 mm) thickness | 1" x 1" (25.4 x 25.4 mm) 0.062" (1.6 mm) thickness |
| Rail | 1" x 1" (25.4 x 25.4 mm) 0.055" (1.6 mm) top wall 0.082" (2.1 mm) side wall | 1" x 1.5" (25.4 x 38.1 mm) 0.055" (1.6 mm) top wall 0.082" (2.1 mm) side wall | 1.625" x 1.625" (41.3 x 41.3 mm) 0.055" (1.6 mm) top wall 0.082" (2.1 mm) side wall |
| Picket Spacing | 3-13/16" (96.8 mm) | 3-15/16" (100 mm) | 3-31/32" (100.8 mm) |
| Material | 6063 T5 Aluminum Alloy with AKZO Powder coating | | |
| Size | 6' or 8' wide x 48", 54", 60" or 72" high | | |
| Color | Black, White, Bronze, Customized | | |

F500



Specifications:

| | |
|----------|--|
| Material | Aluminum 6063 T5 |
| Surface | AAMA 2604 standard AKZO powder coating |
| Rails | 38 x 25 x 1.6 mm |
| Pickets | 16 x 1.2 mm round |
| Heights | 1200 mm |
| Widths | 2400 mm |

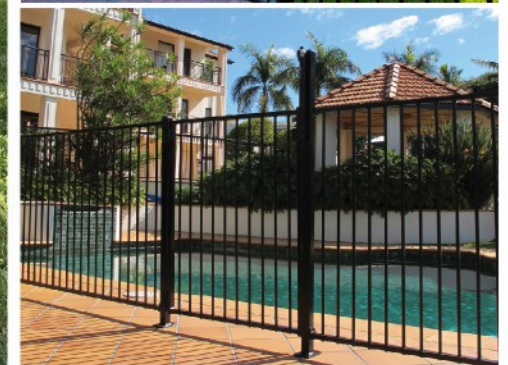
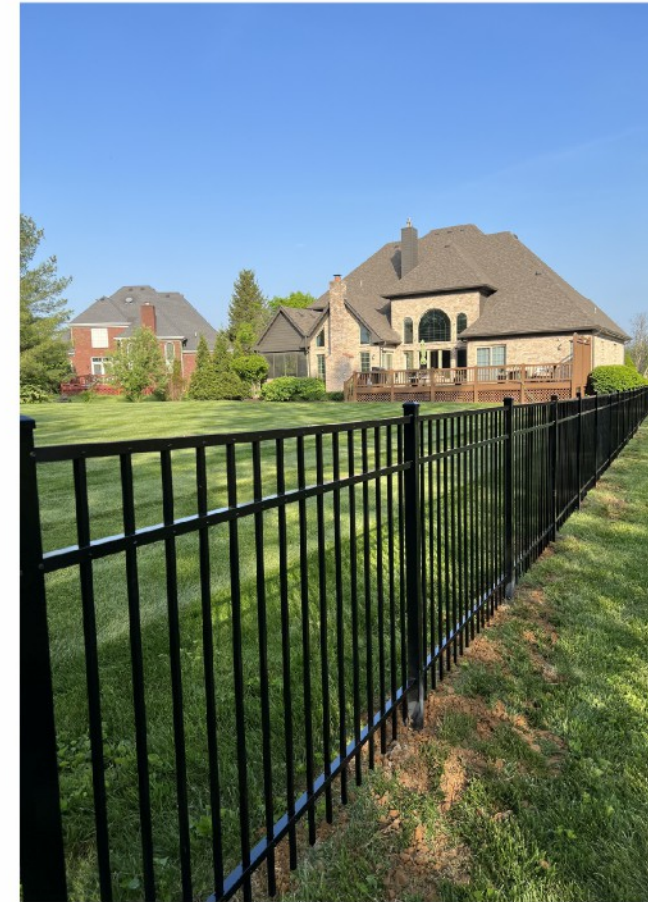
Color Options

Black

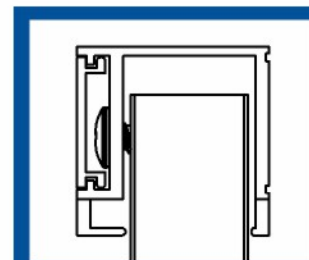
White

Bronze

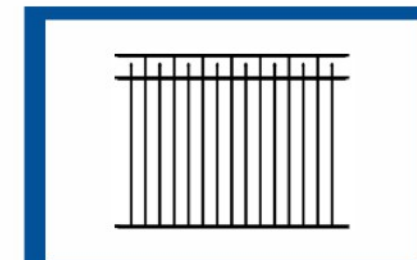
Customized



Features



Hidden Screw



Flush Bottom Option



Rackable

Flat top Gates



Specifications:

| | | | | |
|-------------|--|-------------|-----------------|-----|
| Material | Aluminum 6063 T5 | | | |
| Surface | AAMA 2604 standard AKZO powder coating | | | |
| Height | 48" | 54" | 60" | 72" |
| Length | 3ft | 4ft | 5ft | 6ft |
| Picket size | 5/8" x 5/8" | 3/4" x 3/4" | 1" x 1" | |
| Rail size | 1" x 1" | 1" x 1.5" | 1.625" x 1.625" | |
| Post size | 2" x 2" | | 2.5" x 2.5" | |



Arched top Gates

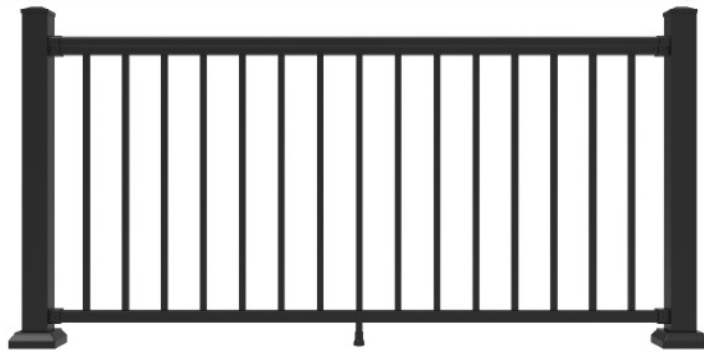


Specifications:

| | | | | |
|-------------|--|-------------|-----------------|-----|
| Material | Aluminum 6063 T5 | | | |
| Surface | AAMA 2604 standard AKZO powder coating | | | |
| Height | 48" | 54" | 60" | 72" |
| Length | 3ft | 4ft | 5ft | 6ft |
| Picket size | 5/8" x 5/8" | 3/4" x 3/4" | 1" x 1" | |
| Rail size | 1" x 1" | 1" x 1.5" | 1.625" x 1.625" | |
| Post size | 2" x 2" | | 2.5" x 2.5" | |



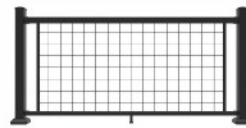
Aluminum Railing System (AR400)



Rod Railing

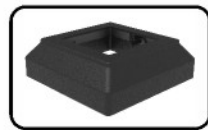
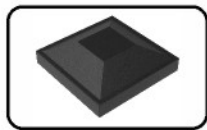
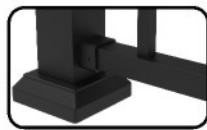


Glass Railing

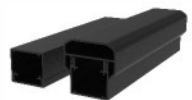


Mesh Railing

- Multiple style options
- Multiple color options
- Hidden fastner system
- ICC-ES AC273 compliant
- Lifetime warranty



AR400 aluminum railing components and accessories



Rail for picket railing



Rod frame



Rail for glass railing



Mesh frame



Bracket

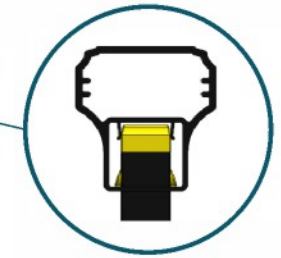
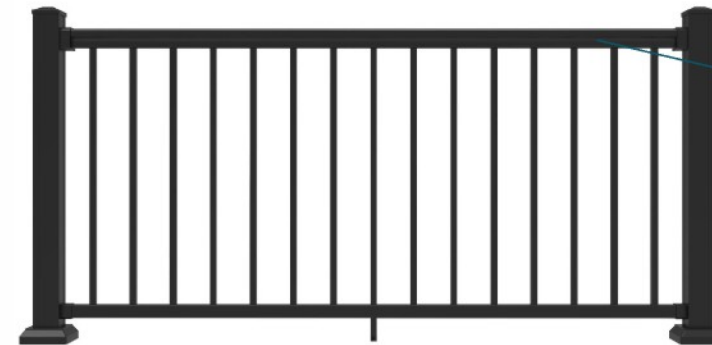


Stair bracket



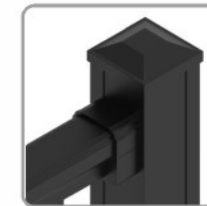
Bottom rail support

Aluminum Railing System (AR500)

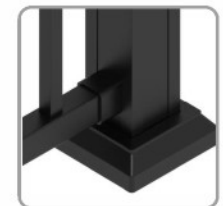


Q-LOCK design
Higher strength

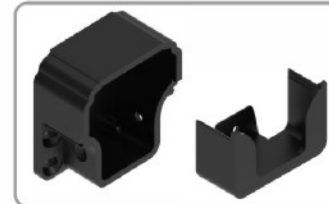
- Pre-assembled, easy to install
- Universal bracket for ground and stairs
- Virtually maintenance free
- IRC & IBS standard
- Available in 6' and 8' length



Top Rail



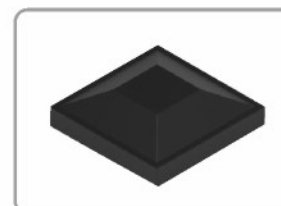
Bottom Rail



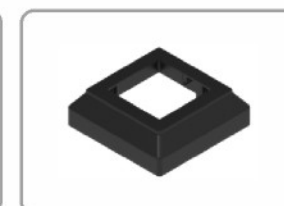
Top Rail Bracket & Cover



Bottom Rail Bracket



Post Cap



Post Trim



Universal bracket

BAROQUE

DELTA Baroque Balusters provide the beautiful appearance of hand forged wrought iron at a fraction of the cost. These uniquely designed balusters come in two colors, displaying a bold and distinctive appearance not found on decks today.



Black Baroque

Baroque Balusters come in two colors: Black and Bronze.



DELTA Baroque Balusters work on both wood and composite railings and are designed for 36" railing heights & 42" railing heights

5 balusters per pack



40" Black Baroque being used as a 42" rail



TRADITIONAL

DELTA Traditional Aluminum Balusters offer distinctive design options not found with typical 2" x 2" wood balusters. Available in 3 colors, these maintenance free balusters create an impressive and rich appearance of wrought iron.



Traditional Balusters easily install using DELTA Baluster Connectors.



26" Traditional White

DELTA Traditional Balusters come in: Black, White, Bronze, DELTA Traditional Balusters install to wood or composite railings.



Traditional Baluster Sizes:
26" for 36" rails
30 3/8" for 36" rails
32" for 42" rails
36 3/8" for 42" rails
10 balusters per pack



DEVELOPMENT HISTORY

START AGAIN
FOR
THE FUTURE

2004

Start FDR business

2015

Vietnam base
started production

2021

Thailand base
started production

2022

New 1000 tons
aluminum extrusion line

