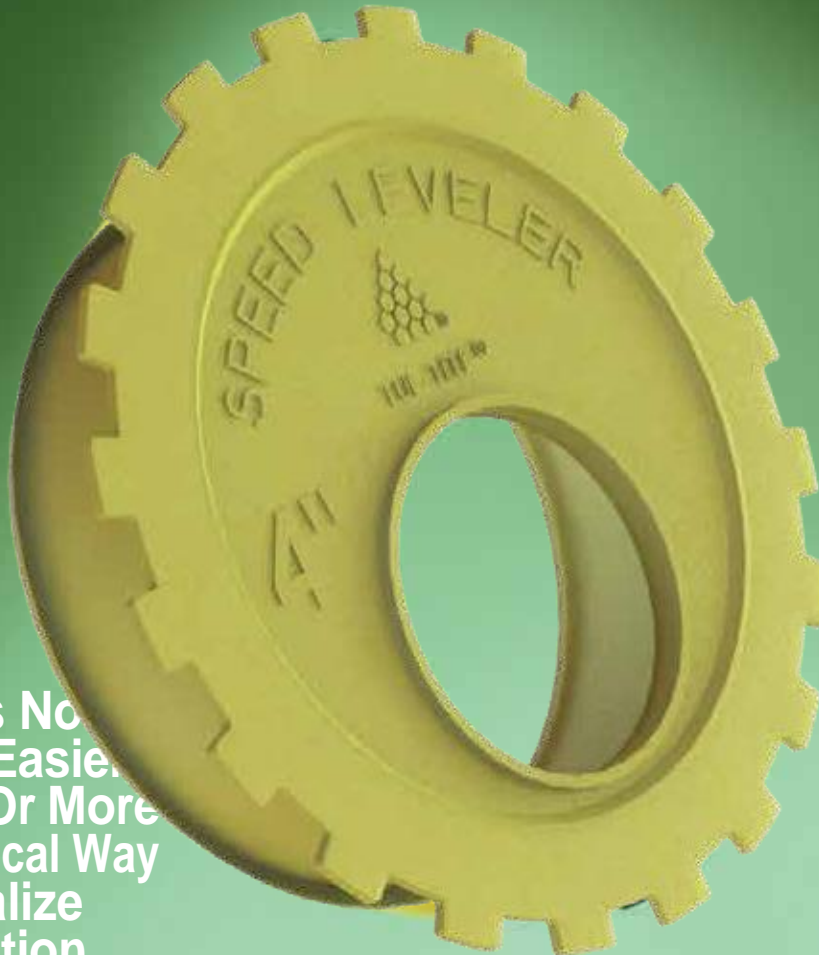


There Is No Faster, Easier, Better, Or More Economical Way To Equalize Distribution Box Flow

There's no need to dig up and re-level tilted distributions boxes. Or to struggle with makeshift pipe dams. Now, with Tuf-Tite Speed Levelers, you can do the job in a fraction of the time, for a fraction of the cost.

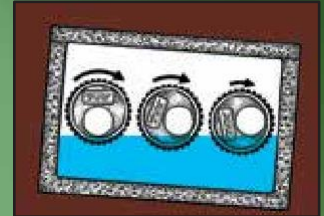


For all size and shape concrete distributions boxes, as well as polyethylene boxes from Tuf-Tite.



Tough Problem

The distribution box is out of alignment. Effluent does not flow equally into the outlet pipes.



TUF-TITE Solution

Insert Tuf-Tite Speed Levelers into the outlet pipes. Simply adjust each Leveler so the flow is equally distributed.



For 3" or 4" PVC pipes

Speed Levelers are precision engineered to fit commonly used Schedule 40 Thick-Wall, SDR 35 (3034), and 2729 Thin-Wall PVC pipes. Simply press the Levelers into the pipe ends. They fit water-tight. No tools are necessary.

Non-corrosive Polyethylene

Tuf-Tite Speed Levelers are molded of specially formulated polyethylene that is highly chemical resistant. They are actually more corrosion resistant than the PVC pipe in which they're used.



They're hand-adjustable

Easily rotate Speed Levelers by hand. The Flo-Hole can be positioned to admit effluent at the precise level you desire. The range of settings is infinitely variable. And Levelers can be reset easily, anytime.

Tested. Proved. Preferred

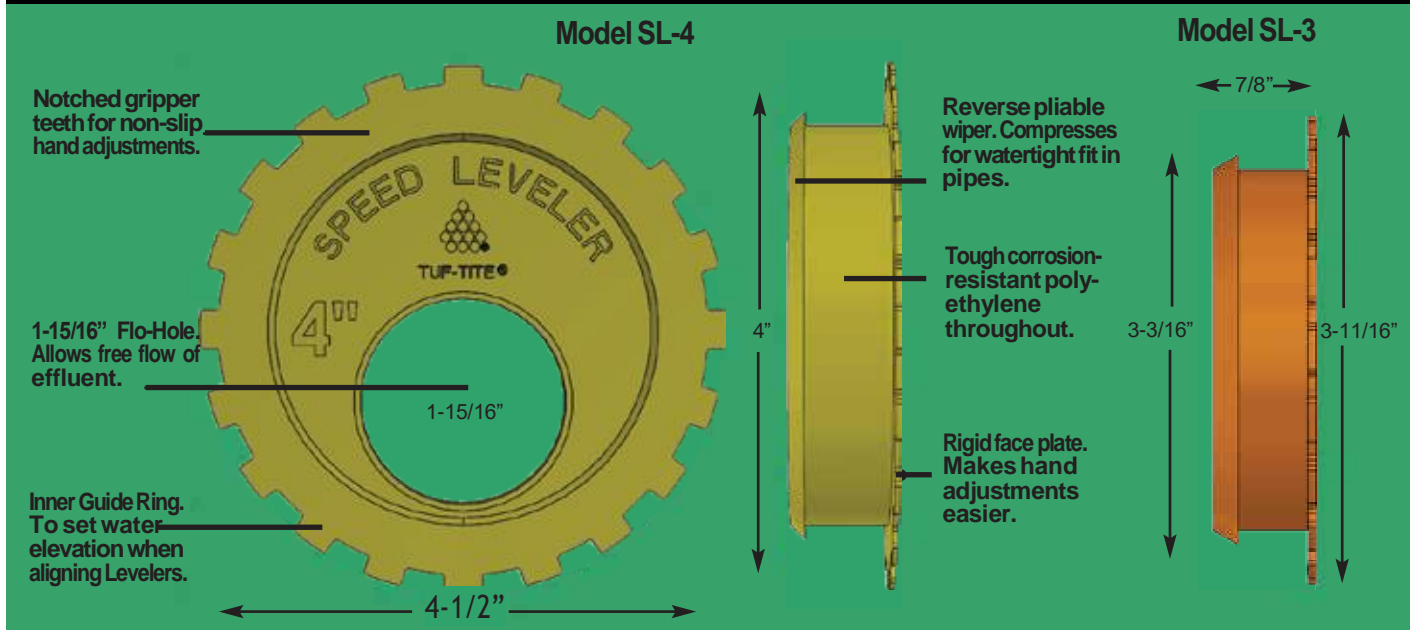
Test after test show that Tuf-Tite Speed Levelers significantly improve distribution in gravity-flow septic systems. There simply is no other way this can be accomplished as effectively, quickly, easily, or economically.



TUF-TITE®

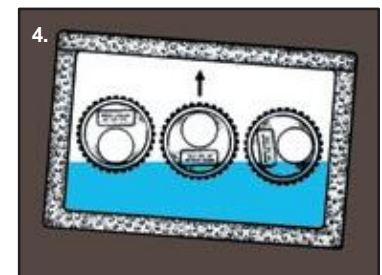
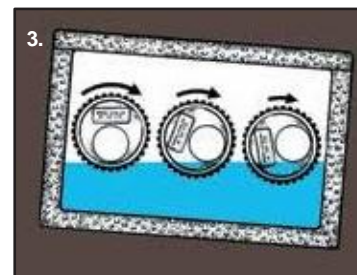
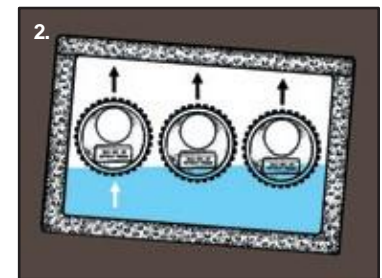
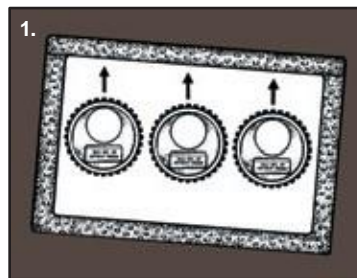
Speed Levelers™ SL-4

One size fits all 4" PVC pipe. Model SL-3, for 3" PVC pipe, also available.



HOW TO SET SPEED LEVELERS

1. Insert a Speed Leveler into each outlet pipe inside the Distribution Box. Rotate each Leveler until the Flo-Hole is at the 12 o'clock position.
2. Start filling the Distribution Box with water. Stop when the water level touches the "Inner Guide Ring" of the highest Speed Leveler.
3. Rotate all the Speed Levelers until each of the Flo-Holes is aligned just above the water level. Slowly add more water to see if it enters all the Flo-Holes simultaneously. Make fine-tune adjustments if necessary.
4. You can alternate fields, or rest failed lines anytime. Simply rotate the Leveler on the appropriate pipe until the Flo-Hole is at the 12 o'clock position to stop the flow.



Drainage and Septic Products

Tuf-Tite® Corporation

