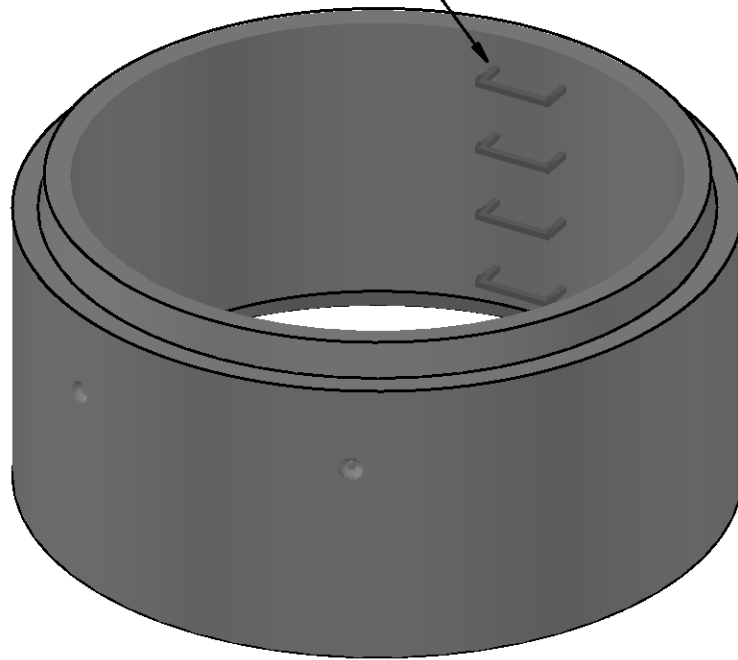


LANE INTERNATIONAL
POLYPROPYLENE 13"(330)
LADDER RUNGS



GENERAL NOTES

Manufacture of precast manhole barrels shall be in accordance with CSA A23.1/A257 and ASTM C478 specifications

Concrete shall be exposure Class HSe and meet min compressive strength of 30MPa @ 28d

Air Category: 4.0% - 7.0% (except where zero-slump concrete is used)

Aggregate: CSA/CAN A23.4
Maximum Size: 20mm

Admixtures: CSA/CAN A23.4
Reinforcing: Grade 400W CSA G30.18

Inserts/Embeds: As noted in drawing details

Lifting Apparatus: 4x 4T Starcon anchors

*** LEKO PRECAST LTD SHALL NOT BE RESPONSIBLE FOR ANY INSTALLATION PRACTICES FOLLOWED ON-SITE UNLESS PERFORMED BY LEKO PRECAST LTD **

Meets H-20 Loading

5600Kg (12320 LBS)

Leko
PRECAST LTD.

96" x 4ft (2440mm x 1220mm) MANHOLE BARREL

DRAWN BY:
JP

CHECKED BY:

APPROVED BY:

DATE:
APRIL 2025

ASSEMBLY DWG.

PREVIOUS DWG.

DRAWING NO.

REVISION

SCALE: 1:30

ISOMETRIC: 1:30

M9604

5

DO NOT SCALE THIS DRAWING