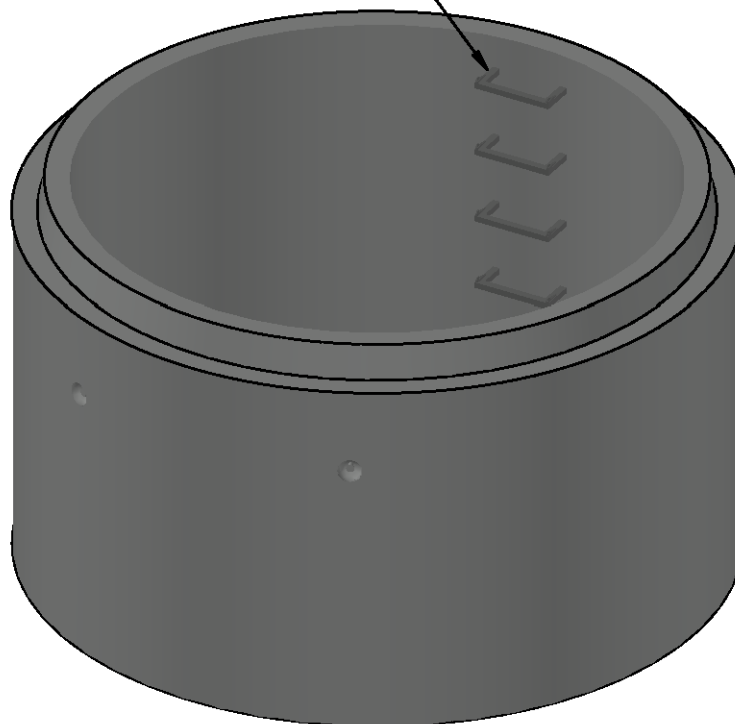


LANE INTERNATIONAL  
POLYPROPYLENE 13"x330"  
LADDER RUNGS



#### GENERAL NOTES

Manufacture of precast manhole barrels shall be in accordance with CSA A23.1/A257 and ASTM C478 specifications

Concrete shall be exposure Class Hse and meet min compressive strength of 30MPA @ 28d

Air Category: 4.0% - 7.0% (except where zero-slump concrete is used)

Aggregate: CSA/CAN A23.4  
Maximum Size: 20mm

Admixtures: CSA/CAN A23.4  
Reinforcing: Grade 400W CSA G30.18

Inserts/Embeds: As noted in drawing details

Lifting Apparatus: 4x 4T Starcon anchors

\*\*\* LEKO PRECAST LTD SHALL NOT BE RESPONSIBLE FOR ANY INSTALLATION PRACTICES FOLLOWED ON-SITE UNLESS PERFORMED BY LEKO PRECAST LTD \*\*

Meets H-20 Loading

7000Kg (15400 LBS)

**Leko**  
**PRECAST** LTD.

96" x 5ft (2440mm x 1525mm) MANHOLE BARREL

DRAWN BY:  
JP

CHECKED BY:

APPROVED BY:

DATE:  
APRIL 2025

ASSEMBLY DWG.

PREVIOUS DWG.

DRAWING NO.

REVISION

SCALE: 1:30

ISOMETRIC: 1:30

M9605

5

DO NOT SCALE THIS DRAWING