



# Scaling The New Heights

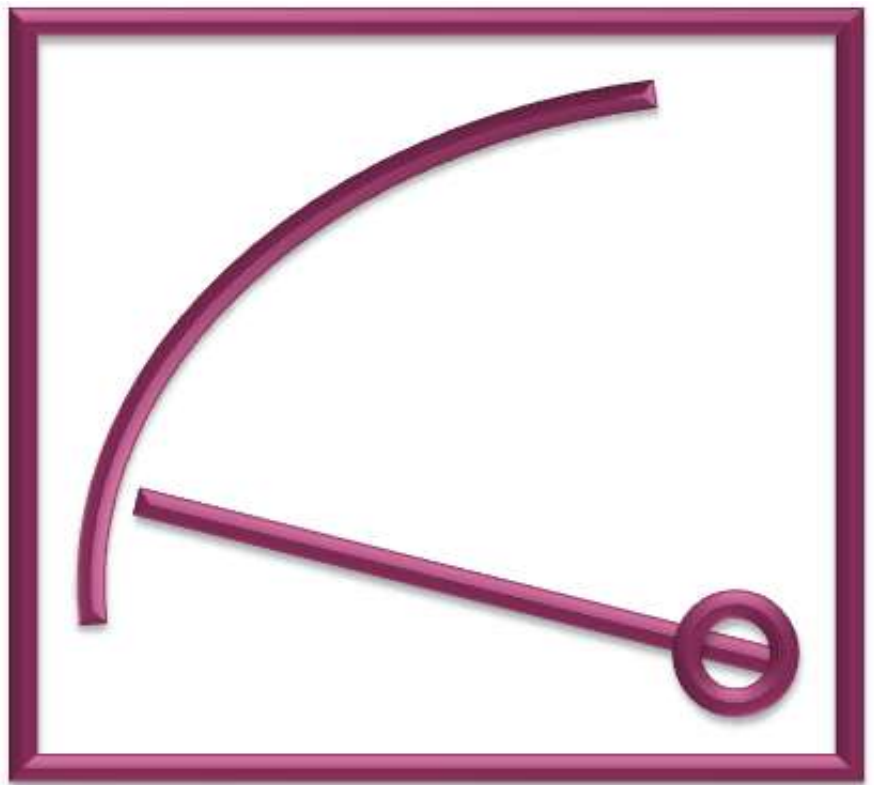
Analog Expertise  
Pricelist w.e.f 1st January 2024



RISHABH

# Index

<b>Analog Expertise</b>	<b>Page No.</b>
Analog Panel Meters	01
CAM Switches	06
Current Transformers	11
DC Shunts	28
<b>Terms and conditions</b>	<b>29</b>



# Analog Panel Meters



## 90° Scale

Group	Type	Description	48x48	72x72	96x96	144x144
			mm	mm	mm	mm
			LP (INR)			
<b>Moving Iron AC Meters</b>			<b>EQ41</b>	<b>EQ71</b>	<b>EQ91</b>	<b>EQ11</b>
EQ	Voltmeter	6, 10, 15, 25, 30, 40, 50, 75, 100, 110, 120, 125, 132.5, 133.33, 150, 250, 300V	585	540	620	900
		400, 500, 600, 750V	685	585	680	1,005
		Non Standard Voltmeter/Non Std PT Operated Voltmeter/Other than above ranges (upto 1000V)	795	685	785	1,165
	Milli -Ammeter	100, 150, 250, 400, 500, 600, 750mA	575	525	575	795
		1, 1.2, 1.25, 1.5, 2.5, 4, 5, 6, 10, 15, 20, 25, CT Operated 5A/1A Secondary	575	515	540	765
		30, 40, 50, 60A	805	620	660	900
Ammeter	100A	-	620	660	900	
	Non Standard Ammeter/Other than above ranges (upto 100A)	865	785	815	1,140	
<b>Moving Iron AC Meters with In-built Selector Switch</b>			<b>SS71</b>	<b>SS91</b>		
SS	Voltmeter / Ammeter	Inbuilt selector switch type Ammeters & Voltmeters (EQ-SWT)	-	825	925	-
<b>Moving Coil DC Meters</b>			<b>PQ41</b>	<b>PQ71</b>	<b>PQ91</b>	<b>PQ11</b>
PQ	Milli -Voltmeter	15**, 25**, 40**, 50 mV	935	810	890	-
		60, 75, 100, 150, 250, 400, 600 & 750mV	910	790	860	1,505
	Voltmeter	1, 1.5, 2.5, 4, 5, 6, 10, 15, 20, 25, 30V	910	790	925	1,505
		40, 50, 60, 100, 150, 200, 250, 300V	1,025	910	975	1,515
		400, 500, 600V	1,125	915	1,050	1,585
Micro -Ammeter	15**, 25**, 40**, 50*, 60*, 75uA	1,155	1,075	1,190	-	
	100, 150, 200, 250, 400, 500, 600, 750uA	1,020	925	975	1,515	
PQ	Milli -Ammeter	1, 1.5, 2.5, 4, 5, 6, 10, 15, 20, 25, 40, 60, 100, 150, 200, 250, 300, 400, 500, 600, 750 mA	870	790	860	1,430
		1, 1.5, 2.5, 4, 5, 6, 10, 15, 20, 25A	870	790	860	1,430
	Ammeter	30, 40, 60A	1,040	910	975	1,720
		100A	-	1,050	1,075	1,840
		4-20mA	1,010	935	1,000	1,655
		Non Standard Ammeter/Other than above ranges (upto 100A)	-	1,250	1,275	2,195

\*\* Class 5, \* Class 2.5



# Analog Panel Meters

## 90° Scale

Group	Type	Description	48x48	72x72	96x96	144x144
			mm	mm	mm	mm
			LP (INR)			
<b>Moving Coil AC Meters with Rectifier</b>			<b>VQ41</b>	<b>VQ71</b>	<b>VQ91</b>	<b>VQ11</b>
VQ	Voltmeter	6**, 10**, 15**, 20**, 25**, 40**, 50*, 60*, 75, 100, 120, 125, 150, 250, 300, 400, 500, 600V	1,435	1,220	1,390	1,945
		Non Standard Voltmeter/Other than above ranges (upto 600V)	1,670	1,415	1,615	2,125
	Micro-Ammeter	100, 150, 250, 400, 50, 600, 750uA	1,330	1,230	1,285	1,860
	Milli -Ammeter	1, 1.5, 2.5, 4, 5, 6, 10, 15, 20, 25, 30, 40, 60, 75, 100mA	1,175	1,085	1,165	1,770
		150, 250, 400 , 600, 750mA	1,310	1,220	1,295	1,910
	Ammeter	1, 1.5, 2.5, 4, 5A	-	1,355	1,435	2,045
6, 10A		-	-	1,525	2,180	
		Non Standard Ammeter/Other than above ranges (upto 10A)	-	-	1,615	2,250

\*\* Class 5, \* Class 2.5

<b>Pointer type Frequency Meters with Built In Transducer</b>			ZQ41	ZQ71	ZQ91	ZQ11
ZQ	Frequency Meter	45-50-55 Hz, 45-55-65 Hz, 55-60-65 Hz	1,195	1,140	1,230	1,320
		380-400-420 Hz, 360-400-440 Hz	-	1,100	1,175	1,270

<b>Vibrating Reed type Frequency Meters</b>			FQ71	FQ91	FQ11	
FQ	Frequency Meter	45-50-55 Hz, 47-50-53 Hz	-	1,065	1,105	-

<b>Power Factor Meters with Built In Transducer</b>			CQ71	CQ91	CQ11	
CQ	Power Factor Meter	1Ph. (Not Applicable for CQ71) & 3Ph. balanced load	-	1,880	1,930	2,040
		3Ph., 3W unbalanced load (D2C)	-	-	4,230	4,755
		3Ph., 4W unbalanced load (V3C)	-	-	5,170	5,780

Cap 0.8-1-0.3 Ind (Bal load), Cap 0.8-1-0.8 Ind (Bal load), Cap 0.5-1-0.5 Ind (Bal & Unbal Load). For 1 Phase meter PF range will be Cap 0.5-1-0.5 Ind only.

For operating frequency 60Hz - Please contact to nearest sales office.

<b>Active (W) / Reactive (B) Power Meters with Built In Transducer</b>			WQ91	WQ11	
WQ	Active Power Meter (Wattmeter)	Single Element Single Phase (E1W)	-	2,060	2,310
		Single Element 3 Phase 3 Wire Balanced Load (D1W)	-	2,460	2,630
		Two Element 3 Phase 3 Wire Unbalanced Load (D2W)	-	3,275	3,630
	Re-active Power Meter (VAr Meter)	Single Element 3 Phase 4 Wire Balanced Load (V1W)	-	2,695	2,870
		Three Element 3 Phase 4 Wire Unbalanced Load (V3W)	-	4,045	4,500
		Single Element Single Phase (E1B)	-	2,060	2,310
		Single Element 3 Phase 3 Wire Balanced Load (D1B)	-	2,460	2,630
		Two Element 3 Phase 3 Wire Unbalanced Load (D2B)	-	3,275	3,630
		Single Element 3 Phase 4 Wire Balanced Load (V1B)	-	2,695	2,870
		Three Element 3 Phase 4 Wire Unbalanced Load (V3B)	-	4,045	4,500

Please Specify Measuring Range, Primary & Secondary Voltage & Current While Ordering. Allowable λ factor ranges 0.5 - 1.5

<b>Synchroscope Meters</b>			SQ91	SQ11
SQ	Synchroscope	110/100V, 127/120V, 240/220V, 440/380V, 480/415V ( LED TYPE)	2,925	4,430

<b>Maximum Demand Ammeters - BIQ / BIEQ</b>			BI41	BI71	BE71	BI91	BE91
MDI	Ammeter	.../1A/1.2/5/6A (8 minutes / 15 minutes)	2,075	1,850	2,290	1,750	2,140
		.../1A/1.2/5/6A ( 20 minutes )	-	2,825	3,150	3,150	3,300



# Analog Panel Meters



## 240° Scale

Group	Type	Description	48x48	72x72	96x96	144x144
			mm	mm	mm	mm
			LP (INR)			
Moving Coil DC Meters			PL41	PL71	PL91	PL11
PL	Milli -Voltmeter	50, 60, 75, 100, 150, 250, 400, 600 & 750 mV	-	-	-	-
		1, 1.5, 2.5, 4, 5, 6, 10, 15, 25, 30, 40, 50, 60, 75, 100V	1,620	1,500	1,575	1,855
	Voltmeter	150, 200, 250, 300, 400, 500, 600V	-	-	-	-
		Non Standard Voltmeter/Other than above ranges (upto 600V)	-	1,595	1,700	1,995
	Micro -Ammeter	50*, 60*, 75, 100uA	-	1,575	1,955	2,010
		100, 150, 250, 400, 500, 600uA	-	1,425	1,520	1,925
	Milli -Ammeter	1, 1.5, 2.5, 4, 5, 6, 10, 15, 20, 25, 40, 50, 60, 100, 150, 200, 250, 300, 400, 500, 600, 750 mA	-	1,360	1,455	1,700
		1, 1.5, 2.5, 4, 5, 6, 10, 15, 20, 25A	-	-	1,770	1,855
	Ammeter	30, 40, 50, 60A	-	-	1,770	1,855
		4-20mA	1,700	1,545	1,620	1,915
	Non Standard Ammeter/Other than above ranges (upto 60A)	-	1,660	1,750	2,030	

\* Class 2.5

Moving Coil AC Meters with Rectifier			VL71	VL91	VL11
VL	Voltmeter	6**, 10**, 20**, 25**, 40**, 50*, 60*, 100, 110, 120, 125, 132.5, 133.33, 150, 200, 250, 300, 400, 500, 600V	1,735	1,845	2,110
		Non Standard Voltmeter/Other than above ranges (upto 600V)	1,855	1,945	2,250
	Ammeter	1A & 5A CT operated	1,875	1,965	2,240

\*\* Class 5, \* Class 2.5

Frequency Meters with Built In Transducer			ZL91	ZL11
ZL	Frequency Meter	45-50-55 Hz, 45-55-65 Hz, 55-60-65 Hz	2,240	2,455
		380-400-420 Hz, 360-400-440 Hz	2,355	2,570

Power Factor Meters with Built In Transducer			CL91	CL11
CL	Power Factor Meter	1Ph. & 3Ph. balanced load	3,555	4,535
		3Ph., 3W unbalanced load (D2C)	6,455	7,435
		3Ph., 4W unbalanced load (V3C)	7,050	8,015

Cap 0.8-1-0.3 Ind (Balanced load), Cap 0.8-1-0.8 Ind (Balanced load), Cap 0.5-1-0.5 Ind (Balanced & Unbalanced Load).

For 1 Phase meter PF range will be Cap 0.5-1-0.5 Ind and Class 1.5 applicable only.

For operating frequency 60Hz - Please contact to nearest sales office.

Active (W) / Reactive (B) Power Meters with Built-in Transducer			WL91	WL11
WL	Active Power Meter (Wattmeter)	Single Element Single Phase (E1W)	4,265	4,460
		Single Element 3 Phase 3 Wire Balanced Load (D1W)	4,080	4,265
		Two Element 3 Phase 3 Wire Unbalanced Load (D2W)	6,020	6,215
	Re-active Power Meter (VAr Meter)	Single Element 3 Phase 4 Wire Balanced Load (V1W)	4,265	4,460
		Three Element 3 Phase 4 Wire Unbalanced Load (V3W)	5,510	5,670
		Single Element Single Phase (E1B)	4,265	4,460
Re-active Power Meter (VAr Meter)	Single Element 3 Phase 3 Wire Balanced Load (D1B)	4,080	4,265	
	Two Element 3 Phase 3 Wire Unbalanced Load (D2B)	6,020	6,215	
	Single Element 3 Phase 4 Wire Balanced Load (V1B)	4,265	4,460	
	Three Element 3 Phase 4 Wire Unbalanced Load (V3B)	5,510	5,670	

Please Specify Measuring Range, Primary & Secondary Voltage & Current While Ordering. Allowable λ factor ranges 0.5 - 1.5



# Analog Panel Meters

<b>Additional Charges Applicable for 90 deg / 240 deg deflection meters</b>	<b>LP (INR)</b>
Standard Scale [e.g. 300/5A (If separate scale is required)]	30
Non-Standard Scale [e.g. RPM, m/min., %, BAR etc. (If separate scale is required)]	55
Customised Scale [Like rpm, m/min., %, BAR etc. This is a surcharge for non standard scale along with the meter price = LP + surcharge	40
Ammeter (x1) (without suppression)	-
Ammeter (x2) or (x3) suppression (for EQ meters only)	-
Ammeter (x5) or (x6) suppression (for EQ meters only)	30
Ammeter (x2) or (x6) suppression (for VQ & VL meters only)	40
Dual Range with three terminals (for EQ 96 and EQ 144 sizes only)	80
Centre Zero (for PQ, PL, WQ & WL meters only)	30
Zero between left & centre (for PQ, PL, WQ & WL meters only)	35
Zero suppression (1.....5V DC) for PQ or PL meters	40
Additional numbering / marking / red mark	35
Coloured Sectors (red/green) per sector	35
Black scale & yellow / white pointer marking & number	65
Customised frequency EQ (40Hz.....400Hz)	40
Calibration at position other than perpendicular	35
Accuracy Class 1	35
Dual scale with two terminals	40
Triple scale with two terminals	55
Red Pointer Assembly 72x72 or 96x96	65
<b>Spares</b>	<b>LP (INR)</b>
Glass ( 48,72,96,144mm)	25
Glass with zero adjustment ( 48,72,96,144mm)	30
Anti glare Glass ( 48,72,96,144mm)	65
MDI Glass with Zero Adjustment Knob	60
Colour Bezel (White, Blue, Red, Yellow)	45
Clamp-strap with screw (set of 2)	25
Swivel fixing clamp (set of 2)	25
Spring clips (only for 48, set of 2)	45
Bezel / black frame	35
Full Back Cover as per IP-20	45
Rubber Gasket 72 Size	50
Rubber Gasket 96 Size	55
IP 65 protection kit ( 72 / 96 size)	120
24V DC Illumination kit	200

## ANSI Standard Meters

### Challenger Series

		Model	361	362	363	364
		Length x Height (mm)	45.7 x 57.4	76.2 x 58.5	95.3 x 73.9	131.7 x 103
		Round Cutout (mm)	40	54	54	70
<b>Moving Iron AC Meters</b>			EQ1C	EQ2C	EQ3C	EQ4C
EQ	Ammeters	Ammeters - Upto 30A	585	520	585	800
		Ammeters - 40 to 60A	685	630	660	930
	Voltmeters	Voltmeters - Upto 300V	620	545	630	885
		Voltmeters - 400 to 600V	670	630	660	945
<b>Moving Coil DC Meters</b>			PQ1C	PQ2C	PQ3C	PQ4C
PQ	Ammeters	Ammeters - 100 to 500uA	945	945	1,120	1,455
		Ammeter s- 1mA to 30A	810	760	800	1,355
		Ammeter s- 40 to 60A	-	810	875	1,500
	Voltmeters	Voltmeter s- Upto 30V	810	760	800	1,355
		Voltmeter s- 40 to 300V	920	855	915	1,380
		Voltmeter s- 400 to 600V	1,020	915	1,010	1,455
<b>Frequency Meters</b>			ZQ1C	ZQ2C	ZQ3C	ZQ4C
ZQ	Frequency Meter 45-55Hz, 45-65Hz, 55-65Hz - 110V/240V/415V		-	1,105	1,165	-

# Analog Panel Meters



## Anush Series

		Model	11	12
		Length x Height (mm)	55.6 x 47.2	79.2 x 67.5
		Round Cutout (mm)	39	56
Moving Iron AC Meters			EQ1A	EQ2A
EQ	Ammeters	Ammeters - Upto 30A		520
		Ammeters - 40 to 60A		600
	Voltmeters	Voltmeters - Upto 300V		585
		Voltmeters - 400 to 600V		600
Moving Coil DC Meters			PQ1A	PQ2A
PQ	Ammeters	Ammeter - 100 to 500uA	930	965
		Ammeter - 1mA to 30A	745	765
		Ammeter - 40 to 60A	810	830
	Voltmeters	Voltmeter - Upto 30V	745	765
		Voltmeter - 40 to 300V	820	855
		Voltmeter - 400 to 600V	900	920

## Two In One Meters

Model	Type	Description	96x96 mm	144x144 mm
<b>Moving Iron AC meters</b>			EQ9T	EQ1T
EQ 2 in1	AC Moving Iron Low rating (<30A) Ammeter - Voltmeter combination Meters		970	1,525
	AC Moving Iron High rating (30A & above) Ammeter - Voltmeter combination Meters		1,130	1,680
	AC Moving Iron Voltmeter - Voltmeter combination Meters		1,020	1,605
	AC Moving Iron Low rating (<30A) Ammeter - Low rating Ammeter (<30A) combination Meters		970	1,525
	AC Moving Iron High rating (30A & above) Ammeter - Low rating (<30A) Ammeter combination Meters		1,130	1,680
2 in1	<b>Frequency Meters</b>		ZQ9T	ZQ1T
	ZQ 2 in1	Frequency - Frequency combination meters	1,710	2,260
<b>Moving Coil DC meters</b>			PQ9T	PQ1T
PQ 2 in1	DC Moving Coil Low rating (<1A) Ammeter - Voltmeter combination Meters		1,525	2,075
	DC Moving Coil High rating (1A & above) Ammeter - Voltmeter combination Meters		1,700	2,225
	DC Moving Coil Voltmeter - Voltmeter combination Meters		1,455	2,020
	DC Moving Coil Low rating (<1A) Ammeter - Low rating (<1A) Ammeter combination Meters		1,525	2,075
	DC Moving Coil High rating (1A & above) Ammeter - Low rating (<1A) Ammeter combination Meters		1,700	2,225

## Run - Hour Meters

Model	Type	Description	72x72 mm	96x96 mm
<b>Rish Elapsed Time Meters (Hour meters)</b>			ET71	ET91
ETM	Hour meters	Voltage AC Input : 100-125 / 200-250 / 380-440V 50Hz & 60Hz	2,160	2,440

## Phase Sequence Indicators

Model	Type	Description	72x72 mm	96x96 mm
<b>Phase Sequence Indicators</b>			ET71	ET91
PSI	Voltage AC Input : 100V to 150V 50Hz / 60Hz		-	2,750
	Voltage AC Input : 151V to 300V 50Hz / 60Hz		2,050	2,250
	Voltage AC Input : 301V to 500V 50Hz / 60Hz		2,050	2,250



# CAM Switches



## Breaker Control (TNC) Switches

Description	LP (INR)	
	TSR	
	25 A	32 A
TNC 1NO 1NC 60D	880	1,055
TNC 2NO 2NC 60D	1,065	1,270

## Spring Return Switches

Description	LP (INR)	
	CSR	
	16 A	25 A
ON OFF SPRING RETURN 90D 1P OFF	570	855
ON OFF SPRING RETURN 90D 2P OFF	590	975
ON OFF SPRING RETURN 90D 3P OFF	670	1,165
ON OFF SPRING RETURN 90D 4P OFF	795	1,255

Description	LP (INR)	
	CSR	
	16 A	25 A
DOUBLE THROW SPRING RETURN 60D 1P 2W OFF	590	975
DOUBLE THROW SPRING RETURN 60D 2P 2W OFF	870	1,255
DOUBLE THROW SPRING RETURN 60D 3P 2W OFF	940	1,570

Description	LP (INR)	
	CSR	
	16 A	25 A
SPRING RETURN 60D 1P 2W W/OFF	545	975
SPRING RETURN 60D 2P 2W W/OFF	795	1,255
SPRING RETURN 60D 3P 2W W/OFF	855	1,570

Spring Return Switches for APFC / Drive panel application	LP (INR)	
	CSR2	
	6A	20A
SPRING RETURN ON-OFF 1NO-1NC	235	235
SPRING RETURN ON-OFF 2NO-2NC	330	330
SPRING RETURN ON-OFF 2NO-1NC	285	285
Options:- Additional charges	LP (INR)	
Front Plate with colour marking (Green & Red)	30	30
Legend (Name) Plate	30	30

Note

- 1) LED CAM Switches :- Prices available on request
- 2) TNC Switch With LMD contacts :- Available from April 2024
- 3) TNC Switch with Lock n Key :- Available from April 2024





## Reverse Forward Switches

Order code	Description	LP (INR)
CRF1-D45L2XXOFS000	RF 45D 2POLE 25A	615
CRF1-D60L2XXOFS000	RF 60D 2POLE 25A	
CRF1-E45L2XXOFS000	RF 45D 2POLE 32A	720
CRF1-E60L2XXOFS000	RF 60D 2POLE 32A	
CRF1-F45L2XXOFS000	RF 45D 2POLE 40A	1,860
CRF1-F60L2XXOFS000	RF 60D 2POLE 40A	
CRF1-G45L2XXOFS000	RF 45D 2POLE 63A	2,255
CRF1-G60L2XXOFS000	RF 60D 2POLE 63A	
CRF1-D45L3XXOFS000	RF 45D 3POLE 25A	805
CRF1-D60L3XXOFS000	RF 60D 3POLE 25A	
CRF1-E45L3XXOFS000	RF 45D 3POLE 32A	925
CRF1-E60L3XXOFS000	RF 60D 3POLE 32A	
CRF1-F45L3XXOFS000	RF 45D 3POLE 40A	2,090
CRF1-F60L3XXOFS000	RF 60D 3POLE 40A	
CRF1-G45L3XXOFS000	RF 45D 3POLE 63A	2,480
CRF1-G60L3XXOFS000	RF 60D 3POLE 63A	



**Note - RF Switches with rating 6A, 10A, 16A and 20A are available on request**

## Reverse Forward Switches with Metal Enclosure - to be available from April 2024

Order code	Description
CRFM-D60L2XXOLS000	RFM 60D 2POLE 25A
CRFM-D60L3XXOLS000	RFM 60D 3POLE 25A
CRFM-E60L2XXOLS000	RFM 60D 2POLE 32A
CRFM-E60L3XXOLS000	RFM 60D 3POLE 32A
CRFM-F60L2XXOLS000	RFM 60D 2POLE 40A
CRFM-F60L3XXOLS000	RFM 60D 3POLE 40A
CRFM-G60L2XXOLS000	RFM 60D 2POLE 63A
CRFM-G60L3XXOLS000	RFM 60D 3POLE 63A



## Instrumentation Switches

Description	LP (INR)				
	CST4				
	6A (PS)	6A (MS)	10A	16A	20A
Ammeter Selector Switch - Line Currents with OFF, 4 Pos.	255	265	310	385	420
Ammeter Selector Switch - Line Currents with Neutral with OFF, 5 Pos.	260	270	315	390	435
Voltmeter Selector Switch - Voltage between phases with OFF, 4 Pos.	185	195	280	340	405
Voltmeter Selector Switch - Voltage between phases and individual phases to neutral with OFF, 7 Pos.	335	350	565	650	685
Voltmeter Selector Switch - Voltage between phases to neutral with OFF, 4 Pos.	330	340	385	475	505

**Note : PS - Plastic Shaft Switch / MS - Metal Shaft Switch**

**Plastic Shaft Switches (6A, 10A, 16A & 20A) are also available with 2 hole mounting option**



## Changeover Switches

RISHCAM - COFF 60 / COFF 90 / CWOFF 90	Description	LP (INR)										
		CST1				CSS1				CSH1		
		6A (PS)	6A (MS)	10A	16A	20A	25A	32A	40A	63A	100A	200A
With OFF 60 Deg / 90 Deg / 90 Deg without OFF	1P 2W	165	170	300	350	355	375	415	555	730	3,620	5,195
	2P 2W	220	230	355	390	460	495	575	745	1,105	5,265	7,890
	3P 2W	265	275	440	515	640	735	795	935	1,465	6,795	10,070
	4P 2W	315	325	505	600	785	970	1,025	1,125	1,855	8,650	12,685

RISHCAM - PCF90	Description	LP (INR)										
		CST1				CSS1				CSH1		
		6A (PS)	6A (MS)	10A	16A	20A	25A	32A	40A	63A	100A	200A
Phase Changeover With OFF 90 Deg	1P 3W	195	200	260	300	350	355	460	665	710	2,970	4,220
	2P 3W	245	255	300	385	475	575	655	760	980	4,345	6,060
	3P 3W	290	300	355	405	545	690	715	1,115	1,515	4,620	6,450
DB Phase Changeover With OFF 90 Deg	3P 1W									885		

## Isolator Switches

RISHCAM - I60 / 90 / 90 CR	Description	LP (INR)										
		CST3				CSS3				CSH3		
		6A (PS)	6A (MS)	10A	16A	20A	25A	32A	40A	63A	100A	200A
Isolator 60 / 90 / 90 Deg CR	1P ON-OFF	130	135	240	280	290	305	375	460	540	2,720	3,475
	2P ON-OFF	165	170	270	310	335	370	430	545	690	3,340	4,460
	3P ON-OFF	180	190	350	385	435	490	535	645	895	4,090	5,605
	4P ON-OFF	220	230	360	405	485	580	615	745	1,105	4,920	6,790

RISHCAM - I45	Description	LP (INR)										
		CST3				CSS3				CSH3		
		6A (PS)	6A (MS)	10A	16A	20A	25A	32A	40A	63A	100A	200A
Isolator 45 Deg	1P ON-OFF	145	150	200	270	285	295	410	495	595		
	2P ON-OFF	195	200	245	310	355	400	460	610	760		
	3P ON-OFF	230	240	290	345	450	515	610	705	1,025		

## Multistep Switches

RISHCAM - MOFF (3 WAY)	Description	LP (INR)										
		CST2				CSS2				CSH2		
		6A (PS)	6A (MS)	10A	16A	20A	25A	32A	40A	63A	100A	200A
With OFF 90 Deg	1P 3W	195	200	345	360	375	360	450	630	700	3,620	5,455
	2P 3W	270	280	395	440	515	585	625	885	990	5,235	8,220
	3P 3W	370	385	515	730	785	860	940	1,175	1,495	6,825	10,705
	4P 3W	465	480	655	875	960	1,050	1,175	1,535	1,795	8,565	13,485

RISHCAM - MOFF (4 WAY)	Description	LP (INR)										
		CST2				CSS2				CSH2		
		6A (PS)	6A (MS)	10A	16A	20A	25A	32A	40A	63A	100A	200A
With OFF 60 Deg	1P 4W	225	235	305	515	570	620	685	780	1,020	3,220	4,605
	2P 4W	370	385	560	615	630	655	750	960	1,195	4,605	7,160
	3P 4W	510	530	510	945	1,005	1,050	1,220	1,615	1,805	12,440	16,050

RISHCAM - MOFF (5 WAY)	Description	LP (INR)										
		CST2				CSS2				CSH2		
		6A (PS)	6A (MS)	10A	16A	20A	25A	32A	40A	63A	100A	200A
With OFF 60 Deg	1P 5W	240	250	475	600	665	770	785	945	1,100	3,270	4,685
	2P 5W	435	450	720	790	895	1,020	1,195	1,230	1,525	4,675	7,220

Note : PS - Plastic Shaft Switch  
MS - Metal Shaft Switch

## Multistep Switches

RISHCAM - MOFF (6 WAY)	Description	LP (INR)										
		CST2				CSS2				CSH2		
		6A (PS)	6A (MS)	10A	16A	20A	25A	32A	40A	63A	100A	200A
With OFF 45 Deg	1P 6W	310	320	315	580	640	690	790	815	1,295	-	-
	2P 6W	510	530	495	835	935	1,050	1,285	1,625	2,070	-	-

RISHCAM - MOFF (7 WAY)	Description	LP (INR)										
		CST2				CSS2				CSH2		
		6A (PS)	6A (MS)	10A	16A	20A	25A	32A	40A	63A	100A	200A
With OFF 45 Deg	1P 7W	325	335	520	620	685	785	810	840	1,285	-	-

RISHCAM - MOFF (8 WAY)	Description	LP (INR)										
		CST2				CSS2				CSH2		
		6A (PS)	6A (MS)	10A	16A	20A	25A	32A	40A	63A	100A	200A
With OFF 30 Deg	1P 8W	355	370	440	615	710	-	-	-	-	-	-

RISHCAM - MOFF (9 WAY)	Description	LP (INR)										
		CST2				CSS2				CSH2		
		6A (PS)	6A (MS)	10A	16A	20A	25A	32A	40A	63A	100A	200A
With OFF 30 Deg	1P 9W	370	385	520	615	765	-	-	-	-	-	-

RISHCAM - MOFF (10 WAY)	Description	LP (INR)										
		CST2				CSS2				CSH2		
		6A (PS)	6A (MS)	10A	16A	20A	25A	32A	40A	63A	100A	200A
With OFF 30 Deg	1P 10W	415	430	540	825	1,105	-	-	-	-	-	-

RISHCAM - MOFF (11 WAY)	Description	LP (INR)										
		CST2				CSS2				CSH2		
		6A (PS)	6A (MS)	10A	16A	20A	25A	32A	40A	63A	100A	200A
With OFF 30 Deg	1P 11W	505	525	595	770	940	-	-	-	-	-	-

RISHCAM - MWOFF (3 WAY)	Description	LP (INR)										
		CST2				CSS2				CSH2		
		6A (PS)	6A (MS)	10A	16A	20A	25A	32A	40A	63A	100A	200A
Without OFF 60 Deg	1P 3W	180	190	325	370	375	460	475	715	805	3,000	4,770
	2P 3W	270	280	475	510	665	825	810	895	1,050	5,260	6,740
	3P 3W	370	385	595	760	800	865	930	1,295	1,520	5,670	10,870
	4P 3W	465	480	655	865	980	1,075	1,135	2,460	2,755	6,075	11,860

RISHCAM - MWOFF (4 WAY)	Description	LP (INR)										
		CST2				CSS2				CSH2		
		6A (PS)	6A (MS)	10A	16A	20A	25A	32A	40A	63A	100A	200A
Without OFF 90 Deg	1P 4W	205	215	350	450	485	555	570	775	1,085	3,620	3,830
	2P 4W	290	300	510	520	600	645	700	940	1,190	5,440	8,980
	3P 4W	395	410	585	815	910	1,005	1,105	1,200	1,595	7,235	11,860

RISHCAM - MWOFF (5 WAY)	Description	LP (INR)										
		CST2				CSS2				CSH2		
		6A (PS)	6A (MS)	10A	16A	20A	25A	32A	40A	63A	100A	200A
Without OFF 60 Deg	1P 5W	235	245	370	475	545	600	765	960	1,200	3,220	4,630
	2P 5W	435	450	410	645	820	960	1,035	1,315	1,650	4,660	11,150

Note : PS - Plastic Shaft Switch  
MS - Metal Shaft Switch

# CAM Switches



## Multistep Switches

RISHCAM - MWOFF (6 WAY)	Description	LP (INR)										
		CST2		CSS2				CSH2				
		6A (PS)	6A (MS)	10A	16A	20A	25A	32A	40A	63A	100A	200A
Without OFF 60 Deg	1P 6W	260	270	310	600	630	680	785	895	1,130	5,235	10,065
	2P 6W	490	505	595	795	985	1,190	1,210	1,225	1,560	10,305	13,240

RISHCAM - MWOFF (7 WAY)	Description	LP (INR)										
		CST2		CSS2				CSH2				
		6A (PS)	6A (MS)	10A	16A	20A	25A	32A	40A	63A	100A	200A
Without OFF 45 Deg	1P 7W	310	320	395	455	620	800	805	960	1,405	-	-

RISHCAM - MWOFF (8 WAY)	Description	LP (INR)										
		CST2		CSS2				CSH2				
		6A (PS)	6A (MS)	10A	16A	20A	25A	32A	40A	63A	100A	200A
Without OFF 45 Deg	1P 8W	315	325	640	675	710	810	840	945	1,350	-	-

RISHCAM - MWOFF (9 WAY)	Description	LP (INR)										
		CST2		CSS2				CSH2				
		6A (PS)	6A (MS)	10A	16A	20A	25A	32A	40A	63A	100A	200A
Without OFF 30 Deg	1P 9W	370	385	515	1,045	1,135	-	-	-	-	-	-

RISHCAM - MWOFF (10 WAY)	Description	LP (INR)										
		CST2		CSS2				CSH2				
		6A (PS)	6A (MS)	10A	16A	20A	25A	32A	40A	63A	100A	200A
Without OFF 30 Deg	1P 10W	395	410	685	1,155	1,255	-	-	-	-	-	-

RISHCAM - MWOFF (11 WAY)	Description	LP (INR)										
		CST2		CSS2				CSH2				
		6A (PS)	6A (MS)	10A	16A	20A	25A	32A	40A	63A	100A	200A
Without OFF 30 Deg	1P 11W	680	705	710	1,220	1,325	-	-	-	-	-	-

RISHCAM - MWOFF (12 WAY)	Description	LP (INR)										
		CST2		CSS2				CSH2				
		6A (PS)	6A (MS)	10A	16A	20A	25A	32A	40A	63A	100A	200A
Without OFF 30 Deg	1P 12W	765	790	805	1,285	1,405	-	-	-	-	-	-

Note : PS - Plastic Shaft Switch

MS - Metal Shaft Switch

Plastic Shaft Switches (6A, 10A, 16A & 20A) are also available with 2 hole mounting option



# Metering Current Transformers

## 3 in 1 CT with RJ12 connection

Secondary Current : 100mA

MODEL	Class 1		
	PRIMARY CURRENT	VA	LP (INR)
XRJ1 (3PH RJ12 75mm wide)	60A	0.25	1,130
	100A		1,185
	125A		1,195
	160A		1,210
XRJ2 (3PH RJ12 105mm wide)	60A	0.25	1,210
	100A		1,245
	125A	0.35	1,250
	160A		1,255
	250A		1,290
XRJ3 (3PH RJ12 140mm wide)	250A	0.25	1,310
	400A		1,335
	630A		1,390
XRJ4 (3PH RJ12 215mm wide)	750A	0.5	1,420
	800A		



Note :- Above CTs are supplied with detachable cable of 2 meter

## 3 Phase Nano CT

Secondary Current : 100mA

MODEL	Class 1		
	PRIMARY CURRENT	VA	LP (INR)
X308 - 3PH 65/8	63A	0.1	825
X306 - 3PH 90/15	125A		875
X307 - 3PH 116/26	250A		995



## 3 Phase Nano CT with RJ12 connection

Secondary Current : 100mA

MODEL	Class 0.5		
	PRIMARY CURRENT	VA	LP (INR)
X308 - 3PH RJ12 65/8	63A	0.1	950
X306 - 3PH RJ12 90/15	125A		990
X307 - 3PH RJ12 116/26	250A		1,130

Note :- Above CTs are e supplied with integrated cable of 1.5 meter

# Metering Current Transformers



## 1 Phase CT with RJ12 connection

Secondary Current : 100mA



MODEL	Class 1			Class 0.5		
	PRIMARY CURRENT	VA	LP (INR)	PRIMARY CURRENT	VA	LP (INR)
XJ52 (1PH RJ12 50/21/30)	50A / 60A	1.0	445			
	75A	1.5	445			
	80A	2.5	445	80A	1.0	625
	100A	2.5	465	100A	1.5	630
	120A			120A	2.5	560
	125A	3.75	470	125A to 150A	2.5	570
	150A	5.0	485	200A	3.75	590
	200A to 250A	5.0	500	250A		605
	300A		515	300A	5.0	625
	400A	7.5	575	400A		675
XJ53 (1PH RJ12 50/30/30)	75A	1.0	445			
	80A	1.5				
	100A / 120A	2.5	455	100A / 120A	1.0	485
	125A	2.5	465	125A		
	150A	3.75	465	150A	2.5	485
	200A		485	200A		510
	250A	5.0	510	250A		540
	300A	5.0	515	300A to 400A	5.0	555
	400A to 500A	6.25	530	500A		570
	600A	7.5	540	600A		575
XJ63 (1PH RJ12 62/30/40)	50A	1.25				
	60A	1.5				
	75A	2.5	675			
	80A	2.0				
	100A / 120A		685	100A	1.5	770
	125A	3.75	700	120A / 125A	2.5	775
	150A	7.5	715	150A	3.75	795
	200A		735	200A	5.0	810
	250A	10.0	775	250A		830
	300A		795	300A	10.0	870
XJ64 (1PH RJ12 62/40/40)	400A	15.0	850	400A	12.5	930
	500A		865	500A		945
	600A	20.0	895	600A		970
	750A		925	750A	15.0	990
	800A	15.0	945	800A		990
	100A to 125A	1.5	500			
	150A	2.5	510			
	200A	3.75	540	200A	1.5	575
	250A		570	250A	2.5	605
	300A	5.0	575	300A		625
XJ64 (1PH RJ12 62/40/40)	400A		585	400A	5.0	670
	500A	7.5	610	500A		675
	600A		650	600A	7.5	685
	750A	10.0	705	750A	10.0	710
	800A		725	800A		735

Note :- Above CTs are supplied with detachable cable of 2 meter

# Metering Current Transformers



## 3 Phase CTs

Standard Secondary current: 5A

MODEL	Class 1			Class 0.5			Class 3		
	PRIMARY CURRENT	VA	LP (INR)	PRIMARY CURRENT	VA	LP (INR)	PRIMARY CURRENT	VA	LP (INR)
X301 (3PH-75/15/60)	100A	1.0					100A		1,250
	125A		1,380				125A		1,295
	150A	1.5		150A	1.5	1,380	150A	2.5	1,360
	160A		1,390	160A		1,400	160A		1,380
X302 (3PH-105/21/40)	100A	1.0	965				100A	2.0	955
	125A		985				125A		980
	150A		995				150A		985
	160A	1.5	1,015	160A		1,025	160A	2.5	995
	200A		1,065	200A	1.5	1,080	200A		1,055
	250A		1,125	250A		1,135	250A		1,110
X303 (3PH-140/31/40)	250A	1.5	1,110	250A	1.5	1,125	250A	2.5	1,105
	300A		1,145	300A		1,150	300A		1,130
	400A	2.5	1,145	400A	2.5	1,145	400A	3.75	1,135
	500A		1,185	500A		1,195	500A		1,175
							40A	1.25	1,030
X304 (3PH-185/27/45)							60A		1,065
							80A		1,075
	100A	1.5	1,105				100A	1.5	1,090
	150A		1,160				150A		1,145
	200A	2.5	1,245				200A	2.5	1,220
	250A		1,335				250A		1,315
	300A		1,400				300A		1,385
	400A	5.0	1,445				400A	5.0	1,430
500A		1,510				500A		1,450	
X305 (3PH-185/37/45)	300A	2.5	945				300A	2.5	935
	400A		1,020				400A		995
	500A	5.0	1,160				500A	5.0	1,135
	600A		1,185				600A		1,170
	800A		1,220				800A		1,220

Notes :-

1. Please add INR 290 for 1A secondary current (Before ordering, please check feasibility with local sales office)
2. Please add INR 90 for Busbar Mounting Kit
3. Please add INR 70 for DIN rail Mounting Kit



# Metering Current Transformers



## Split Core CT

Standard Secondary current: 5A

MODEL	CL 1			CL 0.5			CL 3		
	PRIMARY CURRENT	VA	LP (INR)	PRIMARY CURRENT	VA	LP (INR)	PRIMARY CURRENT	VA	LP (INR)
XS01 (93/30SC/40)	100A	1.5					100A	3.5	
	150A	1.75	1,715				150A	3.75	1,715
	200A	2.5					200A	5.0	
	250A	3.75					250A		
	300A	5.0	2,075	300A	2.5	2,100	300A	6.25	2,075
	400A	6.25		400A	3.75		400A	10.0	
XS05 (105/50SC/50)	100A		3,750						
	125A	1.5	3,790						
	150A	1.75	3,825						
	200A	3.75	3,870	200A	1.5	3,870			
	250A		3,940	250A		3,940			
	300A	5.0	4,005	300A	2.5	4,005			
	400A	7.5	4,120	400A	5.0	4,120			
	500A		4,240	500A		4,240			
	600A	10.0	4,365	600A	6.25	4,365			
	750A	12.5	4,545	750A	7.5	4,545			
XS02 (125/50SC/40)	800A	12.5	4,615	800A	7.5	4,615			
	250A	2.5		250A	1.0				
	300A			300A					
	400A	3.75	2,360	400A	2.5	2,360			
	500A	5.0		500A	3.75				
	600A	7.5		600A	5.0				
	750A			750A					
	800A	10.0	2,485	800A	7.5	2,485			
	1000A			1000A					
	1200A		2,785	1200A		2,785			
XS03 (155/80SC/40)	1250A	15.0		1250A	10.0				
	1500A		3,105	1500A		3,105			
	1600A			1600A					
	2000A		3,410	2000A		3,410			
	250A	2.5		250A	1.0				
	300A			300A	1.5				
	400A	3.75		400A	2.5				
	500A	5.0	3,840	500A	3.75	3,840			
	600A	7.5		600A	5.0				
	750A			750A					
XS03 (155/80SC/40)	800A	10.0		800A	7.5				
	1000A	15.0		1000A	10.0				
	1200A		4,020	1200A	15.0	4,020			
	1250A	30.0		1250A					
	1500A			1500A					
	1600A			1600A	20.0				
	2000A	45.0		2000A					
	2500A		5,225	2500A	25.0	5,225			
3000A			3000A	30.0					



**Notes :**

1. Please add INR 120 for 1A secondary current (Before ordering, please check feasibility with local sales office)



# Metering Current Transformers



## Split Core CT

Standard Secondary current: 5A

MODEL	CL 1			CL 0.5		
	PRIMARY CURRENT	VA	LP (INR)	PRIMARY CURRENT	VA	LP (INR)
XS04 (195/80SC/64)	500A	5.0	5,440	500A	1.25	5,440
	600A			600A		
	750A	10.0	5,700	750A	5.0	5,700
	800A			800A		
	1000A	20.0	5,875	1000A	10.0	5,875
	1200A			1200A		
	1250A	30.0	6,180	1250A	15.0	6,180
	1500A			1500A		
	1600A	45.0	6,485	1600A	20.0	6,485
	2000A			2000A		
	2500A	6,485	6,805	2500A	25.0	6,485
	3000A			3000A		
	4000A	6,805	6,805	4000A	30.0	6,805
	5000A			5000A		



## Compact Split Core CT

MODEL	CL 1			CL 3		
	CT RATIO	VA	LP (INR)	CT RATIO	VA	LP (INR)
XCS1 (36-18)				60/1A	0.2	1,690
				75/1A		1,700
				80/1A		1,705
				100/1A	0.2	1,710
				100/1A		2,355
				125/1A		
XCS2 (50-18)	150/1A	0.2	2,370			
	150/5A					
	200/1A	1.0	2,380			
	200/5A					
	250/1A	2,390				
	250/5A					
XCS3 (50-32)				200/1A	0.2	2,380
	250/1A	0.2	2,390			
	250/5A					
	300/1A	2,400				
	300/5A					
	400/1A	2,420				
	400/5A					
	500/1A	2,430				
500/5A						



# Metering Current Transformers



## Resin Cast CT

Standard Secondary current : 5A

MODEL	Class 1			Class 0.5		
	PRIMARY CURRENT	VA	LP (INR)	PRIMARY CURRENT	VA	LP (INR)
XRC1 (80/30/50)	60A	1.5	855			
	100A	5.0	855	100A	2.5	945
	125A		890	125A	2.5	975
	150A / 160A	5.0	905	150A / 160A	3.75	990
XRC2 (90/50/40)	200A	7.5	725	200A	3.75	800
	250A to 320A	10.0	825	250A	3.75	910
				300A / 320A	5.0	
XRC3 (110/72/40)	400A	10.0	855	400A	5.0	945
	500A		895	500A	7.5	980
	600A to 630A	15.0	930	600A to 630A	15.0	1,020
XRC4 (135/85/40)	800A		975	800A		1,080
	1000A	15.0	1,040	1000A	15.0	1,150
	1200A		1,100	1200A		1,210
XRC5 (165/115/40)	1500A		1,310	1500A		1,445
	1600A	15.0	1,400	1600A	15.0	1,535
	2000A		1,555	2000A		1,710
XRC6 (195/130/40)	2500A		2,060	2500A		2,270
	3000A	15.0	2,210	3000A	15.0	2,435
	3200A		2,660	3200A		2,930
XRC7 (230/165/40)	3000A	15.0	2,775	3000A	15.0	3,055
	3200A		2,885	3200A		3,175
XRC8 (295/200/40)	4000A	15.0	3,835	4000A	15.0	4,215
	5000A		4,890	5000A		5,385
XRC9 (83/W/45)	10A to 50A	5.0	955	10A to 50A	5.0	990

**Note :**

1. Please add INR 120 for 1A secondary current (Before ordering, please check feasibility with local salesoffice)



# Protection Current Transformers



## Resin Cast CT - Protection Class

MODEL	5A Secondary				1A Secondary			
	PRIMARY CURRENT	VA	Class	LP (INR)	PRIMARY CURRENT	VA	Class	LP (INR)
XRC1 (80/30/50)	100A to 125A	1.5	5P5	1,360	100A to 125A	1.5	5P5	1,495
	150A / 160A	1.0	5P10	1,465	150A 160A	1.0 1.25	5P10	1,610
XRC2 (90/50/40)	200A	1.25	5P5	1,880	200A	1.5	5P5	2,075
	250A	1.5			250A	2.5		
	300A / 320A	1.5	5P5	1,905	300A / 320A	1.0	5P10	2,090
XRC3 (110/72/40)	400A to 500A	1.0	5P5	1,925	400A 500A	1.0 1.5	5P5	2,110
	600A to 630A	1.5	5P5	1,935	600A to 630A	1.75	5P5	2,120
XRC4 (135/85/40)	800A	2.5	5P5	2,270	800A to 1000A	1.75	5P10	2,505
	1000A	3.75						
	1200A	5.0	5P5	2,325	1200A	2.5	5P10	2,555
	1250A			2,370	1250A			2,605
XRC5 (165/115/40)	1250A	2.5	5P5	3,300	1500A to 1600A	2.5	5P10	3,630
	1500A	3.75						
	1600A	5.0	5P5	3,335	2000A 2500A	2.5 5.0	5P10	3,670
	2000A	6.25						
XRC6 (195/130/40)	2500A to 3200A	3.75	5P10	4,505	3000A	6.25	5P10	4,940
					3200A	7.5		
XRC7 (230/165/40)	3000A to 3200A	3.75	5P10	4,925	3000A to 3200A	5.0	5P10	5,415
XRC8 (295/200/40)	4000A	10.0	5P10	6,555	4000A	15.0	5P10	7,200
	5000A			7,450	5000A	20.0		8,190



# Metering Current Transformers



## Wound Primary and Busbar Type : Rish Xmer

Standard Secondary current: 5A

MODEL	Class 1			Class 0.5			MODEL	Class 1			Class 0.5		
	PRIMARY CURRENT	VA	LP (INR)	PRIMARY CURRENT	VA	LP (INR)		PRIMARY CURRENT	VA	LP (INR)	PRIMARY CURRENT	VA	LP (INR)
XW01 (62/W)	1A to 30A	5.0	560	1A to 30A	2.5	590		75A	1.0				
XW02 (74/W)	1A to 60A	10.0	700	1A to 60A	5.0	730		80A	1.5	335			
	30A to 40A	1.0	580					100A to 125A	2.5	355	100A to 125A	1.0	370
	50A to 60A	1.5	365					150A	3.75		150A	2.5	
	75A/80A	2.5	370	75A to 80A	1.5	385	XM07 (50/30/30)	200A	5	370	200A	2.5	390
	100A to 125A	3.75	385	100A	1.5	390		250A to 300A	6.25	390	250A to 300A	5.0	415
	150A	5.0		120A to 150A	2.5	400		400A to 500A	7.5	405	400A to 600A	5.0	435
	200A to 250A	7.5	470	200A	3.75	490		50A to 60A	1.5				
	300A	10.0	510	250A to 300A	5.0	530		75A to 80A	2.5	490			
	50A to 60A	1.5		80A	1.0	400		100A	3.75	515	100A	1.0	575
	75A to 80A	2.5		100A to 120A	1.5	420		120A to 150A	5.0		120A / 125A	2.5	
	100A to 125A	3.75	420	125A	2.5		XM08 (50/30/50)	150A			150A	5.0	560
	150A to 250A	5.0	440	150A	2.5			200A	7.5	535	200A	5.0	580
	300A to 400A	5.0	465	200A	3.75	440		250A to 300A	10	545	250A to 300A	10.0	605
	40A	1.0	385	250A	5.0			400A to 500A	12.5	585	400A	10.0	655
	50A to 60A	1.5	365	300A to 400A	5.0	470		600A	15.0	625	500A to 600A		725
	75A / 80A		335	40A	1.0	385		50A	1.5	495			
	100A to 125A	3.75	380	50A to 60A	1.5	700		60A	2.5	500			
	150A to 200A	5.0	410	75A	5.0	700		75A to 80A	2.5	605	75A	1.5	740
	250A to 300A	7.5	445	80A	2.5	625		100A	5.0	670	80A	2.5	745
	30A to 40A	1.0	670	100A to 125A	3.75	615		120A / 125A	5.0	680	100A	2.5	755
	50A to 60A	1.5	660	150A	5.0	590	XM09 (62/R/40)	150A	7.5	705	120A / 125A	3.75	760
	75A	5.0	700	200A	7.5	590		200A	10.0	725	150A	5.0	790
	80A	5.0	625	250A to 300A	12.5	625		250A to 300A	15.0	745	200A	7.5	805
	100A to 125A	5.0	550	300A	10.0	755		400A	15.0	815	250A to 300A	10.0	840
	150A	7.5	590	50A to 60A	1.0	335		500A	15.0	880	400A	15.0	955
	200A	10.0	590	75A	1.5	335		600A	15.0	910	500A	15.0	980
	250A to 300A	12.5	625	80A	2.5	625		50A	1.5	495	600A	1.5	740
	50A to 60A	1.0		100A to 125A	3.75	615		60A	2.5	500	75A / 80A	3.75	660
	75A	1.5	335	150A	7.5	590		75A / 80A	3.75	660	80A	2.5	745
	80A	2.5		200A	10.0	590		100A	5.0	670	100A	2.5	755
	100A to 120A	2.5	355	250A	10.0	755	XM10 (62/20/40)	120A / 125A	5.0	680	120A / 125A	3.75	760
	125A	3.75	360	300A	12.5	625		150A	7.5	705	150A	5	795
	150A	5.0	370	350A	15.0	675		200A	10.0	725	200A	7.5	805
	200A to 250A	5.0	380	400A	15.0	755		250A to 300A	15.0	755	250A to 300A	10.0	840
	300A	7.5	395	50A to 60A	1.0	335		400A to 500A	15.0	815	400A to 500A	15.0	910
	400A	7.5	440	75A	1.5	335		50A	1.25				
	50A	2.5		80A	2.5	625		60A	1.5				
	60A to 75A	3.75	665	100A to 120A	2.5	355		75A	2.5	515			
	80A	5.0		125A	3.75	360		80A	2.0				
	100A to 125A	5.0	640	150A	7.5	590		100A to 125A	3.75	530	100A	1.5	585
	150A	10.0	680	200A	10.0	590		120A / 125A			120A / 125A	2.5	
	200A to 300A	12.5	695	250A to 300A	12.5	625		150A	7.5	545	150A	3.75	605
	400A	15.0	710	300A	10.0	720		200A	10.0	570	200A to 250A	5.0	620
				350A	15.0	755		300A	15.0	605	300A	10.0	660
				400A	15.0	710		400A to 500A	15.0	650	400A to 500A	12.5	715
								600A	20.0	680	600A	15.0	740
								750A / 800A	15.0	710	750A / 800A	15.0	755

- Notes :-
- 1) For XW01 and XW02 models, Add INR 50/- for class 0.2 in LP of CL0.5
  - 2) For Class 0.2 prices, Multiply CL0.5 prices by 1.05 (except XW01 and XW02)
  - 3) For Class 0.2S Prices, refer below table (for primary current and VA rating please refer the datasheet)

Model	LP
62/R/40	1,480
62/20/40	1,630
62/30/40	1,615

For Class 0.2 and Class 0.2S, refer the datasheet for Primary Current and VA ratings.

# Metering Current Transformers



## Busbar Type : Rish Xmer

Standard Secondary current: 5A

MODEL	Class 1			Class 0.5			MODEL	Class 1			Class 0.5			
	PRIMARY CURRENT	VA	LP (INR)	PRIMARY CURRENT	VA	LP (INR)		PRIMARY CURRENT	VA	LP (INR)	PRIMARY CURRENT	VA	LP (INR)	
XM12 (62/30/50)	50A	1.5					XM17 (74/50/45)	100A to 125A	1.5	515				
	60A to 75A	2.5	755					150A	2.5	535				
	80A	3.75		75A / 80A	2.5	790			200A	3.75	560	200A	1.5	620
	100A to 125A	5.0		100A	2.5				250A	5.0	575	250A	2.5	620
	150A	7.5	790	120A to 150A	5	825			300A to 400A	7.5	605	300A to 400A	5.0	650
	200A	15.0		200A	10.0				500A	10.0	625	500A	7.5	655
	250A to 300A	15.0	805	250A to 300A	15.0	850			600A	12.5	655	600A	10.0	665
	400A		825	400A		865			750A to 800A	15.0	675	750A to 800A	12.5	720
	500A	30.0	865	500A	15.0	895			1000A	15.0	745	1000A	12.5	790
	600A		895	600A	20.0	935			50A to 60A	1.5				
750A / 800A	30.0	1,000	750A / 800A	20.0	1,040		75A / 80A	2.5	855					
100A to 125A	1.5	385				XM18 (86/40/45)	100A to 125A	5.0		100A to 125A	2.5	865		
150A	2.5						150A	10.0	715	150A	5.0	765		
200A	3.75	410	200A	1.5	440			200A		750	200A	7.5	795	
250A to 300A	5.0	435	250A	2.5	460			250A	15.0	780	250A		865	
400A	5.0	440	300A	5.0	475			300A		810	300A	15.0	910	
500A	7.5	440	400A to 500A	5.0	510			400A	20.0	855	400A		945	
600A to 800A	10.0	440	600A	7.5	530			500A to 600A	30.0	905	500A to 600A	30.0	995	
			750A / 800A	10.0				750A		975	750A			
40A	1.5		50A to 60A	1.0				800A	30.0	805	800A	30.0	1,070	
50A	2.5	1,075	75A	1.5	1,165			1000A		875	1000A			
60A	3.75		80A	2.5		XM19 (86/50/45)	100A	1.5	670	100A	1.0			
75A / 80A	5.0		100A	5.0	990			120A / 125A	2.5	680	120A / 125A	1.5	760	
100A	7.5	970	120A / 125A	5.0	1,020			150A	5.0	700	150A	2.5		
120A / 125A	10.0	975	150A	7.5	1,075			200A	7.5	720	200A	5.0	800	
150A	12.5	1,020	200A	10.0	815			250A to 300A	10.0	740	250A to 300A	7.5	815	
200A		790	250A	10.0	865			400A	15.0		400A	15.0	745	
250A	15.0	805	300A	15.0	885			500A to 750A	20.0	750	500A to 750A	15.0	755	
300A		815	400A to 500A	15.0	920			800A		825	800A	20.0	895	
400A	20.0	865						1000A	30.0	895	1000A		955	
500A	15.0							1200A / 1250A		850	1200A / 1250A	30.0	900	
40A to 50A	1.5		75A	1.5	1,100	XM20 (86/60/45)	100A	1.0	665					
60A to 75A	2.5	955	80A	2.5	975			120A	1.5	620				
80A	3.75		100A	2.5	975			125A to 150A	2.5	625				
100A	5.0		120A / 125A	2.5	785			200A	3.75	660	200A	1.5	730	
120A / 125A	5.0	720	150A	5.0	755			250A	5.0	680	250A	2.5	745	
150A	7.5	745	200A to 300A	10.0	875			300A	7.5	705	300A	5.0	765	
200A to 300A	15.0	850	400A to 600A	15.0	955			400A	12.5	730	400A to 500A	10.0		
400A to 600A	20.0	895	750A	20.0	1,100			500A to 600A	15.0	740	600A	15.0	800	
750A	30.0	1,010	800A	30.0	1,125			750A to 800A	20.0	795	750A	15.0	855	
800A		1,030						1000A		875	1000A		925	
40A	1.0	660					1200A	30.0	935	1200A		935		
50A to 60A	1.5	670					1250A		945	1250A	20.0	990		
75A / 80A	2.5	680	100A / 120A	1.5	785		1500A	20.0	985	1500A		1,045		
100A	3.75	700	125A	1.5	715		1600A		1,020	1600A		1,080		
120A / 125A	2.5	710	150A	3.75	725									
150A	5.0		200A to 250A	5.0	745									
200A to 250A	10.0	720	300A	10.0										
300A	15.0	730	400A	10.0	800									
400A	15.0	730	500A	15.0	835									
500A	20.0	760	600A to 1000A	15.0	875									
600A to 1000A	20.0	790												

- Notes :-
- 1) For Class 0.2 and Class 0.2S Primary Current and VA ratings, please refer the datasheet.
  - 2) For Class 0.2 prices, Multiply CL0.5 prices by 1.05
  - 3) For Class 0.2S Prices, refer below table

Model	LP	Model	LP	Model	LP
62/30/50	1,660	74/30/45	1,800	86/40/45	2,080
62/40/40	1,575	74/40/45	1,885	86/50/45	2,170
74/20/45	1,740	74/50/45	1,985	86/60/45	2,170

# Metering Current Transformers



## Busbar Type : Rish Xmer

Standard Secondary current: 5A

MODEL	Class 1			Class 0.5			MODEL	Class 1			Class 0.5			
	PRIMARY CURRENT	VA	LP (INR)	PRIMARY CURRENT	VA	LP (INR)		PRIMARY CURRENT	VA	LP (INR)	PRIMARY CURRENT	VA	LP (INR)	
XR01 (100/100V/45)	400A to 500A	5.0	1,040	400A to 500A	2.5	1,140	XM23 (140/80/45)	200A	5.0	895	200A	2.5	995	
	600A		1,075	600A		1,185		250A	10.0	910	250A	5.0	1,020	
	750A		1,125	750A		1,220		300A	15.0	930	300A	7.5	1,030	
	800A	10.0	1,135	800A	5.0	1,245		400A	20.0	990	400A	10.0	1,105	
	1000A	15.0	1,190	1000A	10.0	1,300		500A to 600A	30.0	1,135	500A to 600A	15.0	1,190	
	1200A / 1250A		1,265	1200A / 1250A		1,365		750A to 800A	45.0	1,225	750A to 800A	15.0	1,355	
	1500A	30.0	1,335	1500A	15.0	1,465		1000A	60.0	1,305	1000A	30.0	1,440	
	1600A		1,395	1600A		1,480		1200A		1,325	1200A		1,475	
	2000A		30.0	1,400		2000A		15.0	1,610	1250A	60.0	1,335	1250A	60.0
	2500A	20.0	1,430	2500A	15.0	1,705		1500A to 1600A	60.0	1,365	1500A to 1600A	60.0	1,515	
400A	5.0	1,085	400A	1,200		2000A	1,395	2000A	1,585					
500A		1,135	500A	1,265	600A to 800A	10.0	2,035	600A	5.0	2,155				
600A	5.0	1,190	600A	1,325	1000A to 1250A	15.0	2,155	1000A to 1250A	15.0	2,490				
750A		1,270	750A	1,400	1500A	15.0	2,155	1500A	15.0	2,710				
800A	10.0	1,305	800A	5.0	1,450	1600A	15.0	2,350	1600A	15.0	2,915			
1000A	15.0	1,405	1000A	1,545	2000A	2,540		2000A	2,915					
1200A		1,505	1200A	1,650	2500A	15.0	2,740	2500A	15.0	3,025				
1250A	30.0	1,555	1250A	1,700	3000A	2,885	3000A	3,165						
1500A		1,670	1500A	1,830	200A	3.75	865	200A	1.5	970				
1600A	30.0	1,745	1600A	1,905	250A	5.0	885	250A	2.5	985				
2000A to 2500A	30.0	1,785	2000A to 2500A	15.0	1,975	300A	7.5	910	300A	3.75	1,020			
3000A to 3200A	12.5	1,805	3000A to 3200A	10.0	2,025	400A	10.0	940	400A	7.5	1,045			
100A	1.5	880	XM21 (104/60/45)	600A	15.0	1,015	XM24 (140/100H/45)	600A	15.0	980	500A to 600A	10.0	1,080	
120A / 125A	2.5	885		500A		20.0		970	750A to 800A	20.0	1,040	750A to 800A	15.0	1,140
150A	5.0	895		600A	30.0	975		1000A	20.0	1,110	1000A	15.0	1,210	
200A	10.0	925		750A	30.0	995		1200A / 1250A	30.0	1,180	1200A to 1250A	15.0	1,285	
250A	12.5	940		800A	30.0	1,025		1500A	30.0	1,275	1500A	20.0	1,370	
300A to 400A	15.0	960		1000A	30.0	1,070		1600A	45.0	1,370	1600A	45.0	1,400	
500A	20.0	970		1200A / 1250A	45.0	1,195		2000A	45.0	1,505	2000A	45.0	1,515	
600A	30.0	975		1500A		1,270		1500A	30.0	1,605	2500A	45.0	1,650	
750A	30.0	995		1600A	1,300	1600A		1,400	3000A	60.0	1,760	3000A	60.0	1,810
800A		1,025		800A	1,245	200A		3.75	865	200A	1.5	970		
1000A	45.0	1,145	1000A	1,300	250A	5.0	885	250A	2.5	985				
1200A / 1250A		1,195	1200A / 1250A	1,300	300A	7.5	910	300A	3.75	1,020				
1500A	45.0	1,270	1500A	1,355	400A	10.0	940	400A	10.0	1,045				
1600A	1.5	1,300	1600A	1,400	500A	12.5	980	500A	10.0	1,080				
200A		670	200A	755	600A	15.0	1,080	600A	12.5	1,080				
250A	2.5	700	250A	1.5	755	750A to 800A	20.0	1,040	750A to 800A	15.0	1,140			
300A	7.5	720	300A	2.5	790	1000A	20.0	1,110	1000A	15.0	1,210			
400A	10.0	755	400A	7.5	815	1200A / 1250A	30.0	1,180	1200A to 1250A	15.0	1,285			
500A		760	500A	745	1500A	30.0	1,275	1500A	30.0	1,370				
600A	12.5	760	600A	10.0	780	1600A	45.0	1,370	1600A	45.0	1,485			
750A to 800A	15.0	800	750A to 800A	15.0	875	2000A	45.0	1,505	2000A	45.0	1,625			
1000A	30.0	880	1000A	895	2500A	45.0	1,605	2500A	45.0	1,695				
1200A / 1250A		940	1200A / 1250A	990	3000A	60.0	1,760	3000A	60.0	1,855				
1500A	30.0	980	1500A	20.0	1,030	XM25 (140/100V/45)	750A to 800A	20.0	1,040	750A to 800A	15.0	1,140		
1600A	1.5	1,015	1600A	1,100	1000A		20.0	1,110	1000A	15.0	1,210			
2000A		1,135	2000A	1,170	1200A / 1250A		30.0	1,180	1200A to 1250A	15.0	1,285			

- Notes :-
- 1) For Class 0.2 and Class 0.2S Primary Current and VA ratings, please refer the datasheet.
  - 2) For Class 0.2 prices, Multiply CL0.5 prices by 1.05
  - 3) For Class 0.2S Prices, refer below table

Model	LP	Model	LP	Model	LP	Range	LP
100/100V/45	1,850	104/80/45	2,360	140/100H/45	2,545	XR06 - 130/100/50	
100/130V/45	NA	140/80/45	2,450	140/100V/45	2,545	600 to 1000A	2,950
104/60/45	2,265					1200 to 2000A	3,420
						2500 to 3000A	3,430

# Metering Current Transformers



## Busbar Type : Rish Xmer

Standard Secondary current: 5A

MODEL	Class 1			Class 0.5			MODEL	Class 1			Class 0.5			
	PRIMARY CURRENT	VA	LP (INR)	PRIMARY CURRENT	VA	LP (INR)		PRIMARY CURRENT	VA	LP (INR)	PRIMARY CURRENT	VA	LP (INR)	
XR03 (140/130V/45)	400A		1,170	400A		1,305	XR04 (225/125/50)	600A to 800A	10.0	1,485	600A	5.0	1,620	
	500A	5.0	1,220	500A	3.75	1,355					750A to 800A	10.0		
	600A		1,285	600A		1,425					1000A		1,635	
	750A	7.5	1,360	750A	5.0	1,505				15.0	1,665	1200A	10.0	1,690
	800A		1,405	800A		1,555					1,705	1250A		1,745
	1000A	10.0	1,505	1000A		1,655				30.0	1,755	1500A to 1600A	15.0	1,805
	1200A		1,615	1200A	10.0	1,760					1,755	2000A	15.0	1,800
	1250A	15.0	1,655	1250A		1,825				30.0	1,810	2500A	30.0	1,930
	1500A		1,785	1500A		1,950					2,030	3000A	30.0	2,070
	1600A	15.0	1,855	1600A	15.0	2,030				60.0	2,155	4000A	45.0	2,195
	2000A to 2500A		1,950	2000A to 2500A		2,215				100.0	2,505	5000A		2,605
	3000A		2,075	3000A		2,330					2,730	6000A	100.0	2,780
3200A	20.0	2,160	3200A	20.0	2,350			10.0	1,465	1000A	5.0	1,570		
4000A		2,205	4000A		2,425			15.0	1,680	1200A to 1250A	10.0	1,740		
5000A		2,290	5000A		2,520				1,760	1500A		1,805		
								30.0	1,795	1600A	15.0	1,830		
									1,825	2000A		1,865		
								30.0	1,935	2500A		1,970		
									2,055	3000A		2,075		
								45.0	2,155	4000A	30.0	2,170		
									2,330	5000A		2,375		
									2,415	6000A		2,505		
									2,630	7500A		2,690		

- Notes :-
- 1) For Class 0.2 and Class 0.2S Primary Current and VA ratings, please refer the datasheet.
  - 2) For Class 0.2 prices, Multiply CL0.5 prices by 1.05
  - 3) For Class 0.2S Prices, refer below table

Model	LP	Range	LP	Range	LP
Model	LP	XR06 - 225/125/50		XR06 - 225/167/50	
140/130V/45	NA	1000A	2,495	1500 to 1600A	2,995
		1200 to 1600A	2,900	2000A	3,765
		2000A	3,580	2500 to 3000A	3,900
		2500 to 3000A	3,830	4000A	4,520
		4000A	4,165	5000A	5,200
		5000A	4,670	6000A	5,710
		6000A	5,200	7500A	6,235

IMP :- For Models XM01 to XM20 - Primary Current ranges up to 200A shall come alongwith wall mounting clamps as default.

Busbar mounting kit is available on chargeble basis (please add Rs. 30 for the same)

1. Please add Rs. 120/- for 1A secondary current. (Before ordering, please check the feasibility with local Sales office).
2. Please add Rs. 35/- for DIN Rail mounting kit.
3. Please add Rs. 30/- for Busbar mounting kit.



# Protection Current Transformers



## Busbar Type : Rish Xmer

Standard Secondary current: 5A

MODEL	Class 5P5			Class 10P5			Class 5P10			Class 10P10		
	PRIMARY RATIO	VA	LP (INR)	PRIMARY RATIO	VA	LP (INR)	PRIMARY RATIO	VA	LP (INR)	PRIMARY RATIO	VA	LP (INR)
XP06 (86/50/45)	100A	1.5	825	100A	1.5	750						
	150A	1.75	880	150A	1.75	795						
	200A	2.5	910	200A	2.5	825						
	250A to 300A	3.75	965	250A to 300A	3.75	895						
	400A	5.0	1,025	400A	5.0	940	300A to 400A	1.0	1,090	300A to 400A	1.0	1,005
	500A to 600A	5.0	1,090	500A to 600A	5.0	1,005	500A to 600A	1.0	1,165	500A to 600A	1.0	1,090
XP07 (104/30/45)	750A to 800A	7.5	1,185	750A to 800A	7.5	1,115	750A to 800A	1.5	1,250	750A to 800A	1.5	1,165
	50A to 80A	2.5	1,910	50A to 80A	2.5	1,835	80A	1.5	1,830	60A to 80A	1.5	1,675
	100A to 125A	5.0	1,965	100A to 125A	5.0	1,885	100A to 125A	1.5	1,860	100A to 125A	2.5	1,930
	150A	7.5	2,025	150A	7.5	1,940	150A	2.5	1,925	150A	3.75	1,840
	200A		2,085	200A		2,015	200A	3.75	1,905	200A	5.0	1,905
	250A	10.0	2,160	250A	10.0	2,075	250A	5.0	2,060	250A	7.5	1,990
	300A		2,220	300A		2,155	300A	7.5	2,130	300A	10.0	2,060
	400A	15.0	2,370	400A	15.0	2,285	400A	10.0	2,265	400A	15.0	2,145
	500A		2,510	500A		2,425	500A	15.0	2,400	500A	20.0	2,340
	600A	15.0	2,640	600A	15.0	2,555	600A	20.0	2,465	600A	25.0	2,495
	150A	2.5	1,440	150A	2.5	1,430						
	XP08 (104/50/45)	200A	5.0	1,450	200A	5.0	1,330	200A	1.5	1,475	200A	1.5
250A			1,475	250A	7.5	1,530	250A	2.5	1,520	250A	2.5	1,430
300A		7.5	1,670	300A	7.5	1,585	300A	2.5	1,570	300A	2.5	1,480
400A			1,780	400A		1,695	400A	5.0	1,670	400A	5.0	1,585
500A		10.0	1,875	500A	10.0	1,810	500A	7.5	1,785	500A	7.5	1,695
600A			1,985	600A		1,910	600A	10.0	1,875	600A	10.0	1,780
750A		10.0	2,145	750A	10.0	2,060	750A	15.0	2,050	750A	15.0	1,965
800A			2,200	800A		2,115	800A	20.0	2,100	800A	20.0	2,015
XP09 (104/60/45)	1000A	10.0	2,400	1000A	10.0	2,325	1000A	5.0	2,315	1000A	5.0	2,215
	100A	1.5	1,175	100A	1.5	1,105						
	150A	2.5	1,220	150A	2.5	1,145	150A to 200A	1.0	1,165	150A to 200A	1.0	1,075
	200A	3.75	1,270	200A	3.75	1,185						
	250A	5.0	1,290	250A	5.0	1,250	250A	1.5	1,215	250A	1.5	1,130
	300A		1,350	300A		1,275	300A	1.75	1,260	300A	1.75	1,170
	400A	7.5	1,445	400A	7.5	1,370	400A	2.5	1,345	400A	2.5	1,260
	500A		1,535	500A		1,465	500A	3.75	1,395	500A	3.75	1,310
	600A	7.5	1,625	600A	7.5	1,545	600A	5.0	1,435	600A	5.0	1,350
	750A	10.0	1,580	750A	10.0	1,505	750A	7.5	1,485	750A	7.5	1,400
XP10 (140/60/45)	800A		1,625	800A		1,545	800A	10.0	1,525	800A	10.0	1,440
	200A	7.5	2,785	200A	7.5	2,710	200A	2.5	2,690	200A	2.5	2,605
	250A		2,855	250A		2,775	250A	3.75	2,755	250A	3.75	2,625
	300A	10.0	2,925	300A	10.0	2,845	300A	5.0	2,820	300A	5.0	2,665
	400A		3,060	400A		2,980	400A	7.5	2,960	400A	7.5	2,850
	500A	10.0	3,200	500A	10.0	3,115	500A	10.0	3,105	500A	10.0	2,945
	600A	12.5	3,335	600A	12.5	3,240	600A	15.0	3,240	600A	15.0	3,010
	750A		3,550	750A		3,440	750A	20.0	3,440	750A	20.0	3,175
	800A	12.5	3,615	800A	12.5	3,510	800A	25.0	3,510	800A	25.0	3,210
	1000A		3,880	1000A		3,815	1000A		3,790	1000A		3,455
	1200A	12.5	4,170	1200A	12.5	4,080	1200A	30.0	4,070	1200A	30.0	3,740
	1250A		4,230	1250A		4,160	1250A		4,135	1250A		3,870
	1500A	15.0	4,580	1500A	15.0	4,505	1500A	40.0	4,485	1500A	40.0	4,010
	1600A		4,715	1600A		4,625	1600A		4,620	1600A		4,185
2000A	20.0	5,270	2000A	20.0	5,195	2000A	50.0	4,895	2000A	50.0	4,320	

Notes :-

1. Please add INR 120/- for 1A secondary current. (Before ordering, please check the feasibility with local Sales office).
2. Please add INR 35/- for DIN Rail mounting kit.



# Protection Current Transformers



## Busbar Type : Rish Xmer

Standard Secondary current: 5A

MODEL	Class 5P5			Class 10P5			Class 5P10			Class 10P10		
	PRIMARY RATIO	VA	LP (INR)	PRIMARY RATIO	VA	LP (INR)	PRIMARY RATIO	VA	LP (INR)	PRIMARY RATIO	VA	LP (INR)
XP11 (140/80/45)	200A	5.0	2,395	200A	5.0	2,315	200A	2.5	2,505	200A	2.5	2,425
	250A		2,465	250A		2,370	250A		2,550	250A		2,445
	300A		2,510	300A		2,425	300A		2,615	300A		2,495
	400A	7.5	2,625	400A	7.5	2,535	400A	3.75	2,735	400A	3.75	2,610
	500A		2,740	500A		2,645	500A		2,845	500A		2,695
	600A	10.0	2,855	600A	10.0	2,765	600A	5.0	2,945	600A	5.0	2,735
	750A to 800A	10.0	3,050	750A to 800A	10.0	2,970	750A to 800A	5.0	3,160	750A to 800A	5.0	2,850
	1000A to 1250A	10.0	3,170	1000A to 1250A	10.0	3,100	1000A to 1250A	5.0	3,000	1000A to 1250A	5.0	2,865
	1500A to 1600A	15.0	3,285	1500A to 1600A	15.0	3,180	1500A to 1600A	7.5	3,340	1500A to 1600A	7.5	2,890
	2000A	20.0	3,455	2000A	20.0	3,355	2000A	10.0	3,770	2000A	10.0	3,175
	2500A		3,665	2500A		3,480	2500A		4,255	2500A		3,665
	250A to 300A		2.5	1,420		250A to 300A	2.5		1,330			
	400A	3.75	1,520	400A	3.75	1,435						
	500A to 600A	5.0	1,635	500A to 600A	5.0	1,560	600A	1.0	1,575	600A	1.0	1,490
750A to 800A	7.5	1,825	750A to 800A	7.5	1,735	750A to 800A	1.0	1,725	750A to 800A	1.0	1,640	
1000A	10.0	1,925	1000A	10.0	1,840	1000A	1.0	1,905	1000A	1.0	1,825	
1200A / 1250A		1,970	1200A / 1250A		1,885	1200A / 1250A		1,865	1200A / 1250A		1,780	
1500A		2,160	1500A		2,080	1500A		2,060	1500A		1,980	
1600A	10.0	2,240	1600A	10.0	2,160	1600A	1.25	2,135	1600A	1.25	2,055	
2000A		2,525	2000A		2,460	2000A		2,425	2000A		2,350	
2500A		2,895	2500A		2,805	2500A		2,795	2500A		2,710	
100A	10.0	3,395	100A	10.0	3,505	150A	5.0	3,700		10.0	3,690	
150A to 200A		3,510	150A to 200A		3,340	200A		3,770	200A		3,690	
250A		3,665	250A		3,490	250A		3,805	250A		3,770	
300A	15.0	3,830	300A	15.0	3,620	300A	10.0	3,845	300A	15.0	3,900	
400A to 500A	15.0	3,790	400A to 500A	15.0	3,620	400A to 500A	15.0	3,915	400A to 500A	15.0	3,745	
600A to 800A		3,945	600A to 800A		3,790	600A to 800A		4,285	600A to 800A		4,095	
1000A to 1250A		4,330	1000A to 1250A		4,160	1000A to 1250A		4,730	1000A to 1250A		4,530	
1500A to 2000A	15.0	4,615	1500A to 2000A	15.0	4,455	1500A to 2000A	15.0	5,070	1500A to 2000A	15.0	4,855	
600A to 800A	5.0	2,330	600A	5.0	2,315							
1000A	10.0		750A to 1000A	10.0	2,445							
1200A to 1250A	10.0	2,745	1200A to 1250A	15.0	3,000	1200A to 1250A	1.5	2,975	1200A to 1250A	2.5	2,905	
1500A to 1600A	15.0	2,990	1500A to 1600A	15.0	2,800	1500A to 1600A	2.5	2,940	1500A to 1600A	2.5	2,930	
2000A to 2500A	15.0	3,310	2000A to 2500A	15.0	3,105	2000A	3.75	3,555	2000A	5.0	3,595	
3000A to 4000A	15.0	3,745	3000A to 5000A	20.0	3,700	2500A	5.0	3,705	2500A	7.5	3,775	
5000A	20.0	3,955				3000A to 4000A	7.5	4,025	5000A	10.0	4,190	
1000A to 1250A	5.0	2,795	1000A	5.0	2,725	1200A to 1250A	1.5	3,045	1200A to 1250A	2.5	2,980	
1500A to 1600A	5.0	2,955	1500A to 1600A	7.5	3,000	1500A to 1600A	2.5	3,140	1500A to 1600A	3.75	3,090	
2000A	7.5	3,280	2000A	12.5	3,340	2000A to 2500A	3.75	3,485	2000A	5.0	3,475	
2500A	10.0		2500A	15.0		2500A	7.5					
3000A	15.0	3,660	3000A to 4000A	20.0	3,620	3000A to 4000A	7.5	4,130	3000A	10.0	4,095	
4000A	20.0	3,875				4000A	12.5		4,275			
5000A to 6000A	20.0	4,120	5000A to 6000A	20.0	3,855	5000A to 6000A	7.5	4,275	5000A to 6000A	12.5	4,380	

Notes :-

1. Please add INR 120/- for 1A secondary current. (Before ordering, please check the feasibility with local Sales office).
2. Please add INR 35/- for DIN Rail mounting kit.

# Metering Current Transformers



## TW series CT

Standard Secondary current : 5 A

MODEL	Class 1			Class 0.5			Class 0.5S			Class 0.2		
	PRIMARY CURRENT	VA	LP (INR)	PRIMARY CURRENT	VA	LP (INR)	PRIMARY CURRENT	VA	LP (INR)	PRIMARY CURRENT	VA	LP (INR)
TW01 (73/30/40)	50A to 80A	1.5	460									
	100A	2.5	460									
	120A	2.5	495	100A to 120A	1.5	510						
	125A	3.75	510	125A		540						
	150A	5.0	540	150A	2.5	550						
	200A	10.0		200A	5.0	570						
TW02 (73/30/50)	50A		555									
	60A	1.5	570									
	75A / 80A	2.5	570	75A / 80A	1.5	595						
	100A to 125A	5.0	590	100A to 125A	2.5	615						
	150A	10.0	615	150A	5.0	615	150A	2.5	630			
	200A	15.0	630	200A	10.0	630	200A	5.0	655	200A	2.5	685
TW03 (92/43/41)	75A	1.0	630									
	80A	1.5	640									
	100A	2.5	655									
	120A / 125A	2.5		100A to 125A	1.0	645						
	150A	3.75		150A	1.5	665						
	200A	10.0	665	200A	5.0	670	200A	5.0	745	200A	1.5	785
TW04 (100/58/41)	250A	15.0		250A	7.5	675	250A	7.5	765	250A	2.5	805
	300A	20.0		300A	10.0	680	300A	10.0		300A	3.75	820
	120A	1.0										
	125A	1.5	590									
	150A	2.5		150A	1.0							
	200A	5.0		200A	2.5	595	200A	1.5	625			
TW05 (110/72/41)	250A	7.5		250A	3.75	625	250A	2.5	655			
	300A	10.0	625	300A	5.0	640	300A	3.75	675			
	400A	20.0		400A	10.0	590	400A	7.5	655	400A	5.0	725
	500A	25.0		500A		625	500A	10.0	670	500A	7.5	755
	600A	25.0	645	600A	15.0	645	600A	15.0	680	600A	10.0	775
	200A	1.5	625									
TW06 (159/113/40)	250A	2.5	665	250A	1.5	665						
	300A	5.0	685	300A	2.5	685						
	400A	12.5	715	400A	7.5	715	400A	5.0	735	400A	2.5	765
	500A	15.0	755	500A		755	500A		765	500A	3.75	795
	600A	15.0	770	600A	10.0	770	600A	7.5	785	600A	5.0	815
	800A	30.0	785	800A	15.0	785	800A	15.0	810	800A	10.0	830
TW06 (159/113/40)	1000A	30.0	820	1000A		820	1000A		830	1000A		850
	600A	10.0	900	600A	5.0	900	600A	3.75	920	600A	1.5	935
	800A		920	800A	10.0	920	800A	7.5	935	800A	2.5	945
	1000A	15.0	935	1000A		935	1000A		945	1000A	3.75	975
	1200A		990	1200A		990	1200A		1,000	1200A		1,015
	1250A		1,035	1250A		1,035	1250A		1,040	1250A		1,045
TW06 (159/113/40)	1500A	30.0	1,075	1500A	20.0	1,075	1500A	15.0	1,080	1500A		1,085
	1600A		1,110	1600A		1,110	1600A		1,120	1600A		1,125
	2000A		1,135	2000A		1,135	2000A		1,150	2000A	15.0	1,180
	2500A		1,220	2500A	25.0	1,225	2500A	20.0	1,230	2500A		1,235
	3000A	45.0	1,300	3000A		1,315	3000A		1,325	3000A		1,335
	3200A		1,355	3200A	30.0	1,380	3200A	25.0	1,385	3200A		1,425

Sr. No.	Accessories (Optional) - Wall Mounting Bracket	OD/ID (AXIAL)	LP (INR)
1	TW-2	73/30 (50)	45
2	TW-3	92/43 (41)	50
3	TW-4	100/58 (41)	60
4	TW-5	110/72 (41)	
5	TW-6	159/113 (40)	65

Note :-

1. Please add INR 120 for 1A secondary current (Before ordering, please check feasibility with local sales office)



# Metering Current Transformers

## TW e series CT

Standard Secondary current : 5 A

MODEL	Class 1			Class 0.5		
	PRIMARY CURRENT	VA	LP (INR)	PRIMARY CURRENT	VA	LP (INR)
TE01 - TW-E 73/30/50	100A	2.5		100A	2.5	670
	150A	5.0	490	150A	5.0	
		5.0			5.0	495
	200A	15.0	500	200A	10.0	670
TE02 - TW-E 80/30/100 (w/o casing)		10.0	725	100A	2.5	895
	100A	15.0	1,750			
	150A	15.0	1,480	150A	5.0	1,660
		5.0	490	200A	5.0	525
TE03 - TW-E 92/43/41		10.0	525			
		15.0	875			
		5.0	490	250A	5.0	525
	250A	10.0	560	250A	7.5	740
		15.0	875			
		5.0	495		5.0	545
	300A	10.0	605	300A	10.0	765
		15.0	765			
TE04 - TW-E 95/50/40		5.0	510			
	400A	15.0	680			
		5.0	480	200A	5.0	625
	200A	10.0	530			
		15.0	895			
		5.0	500	250A	5.0	580
	250A	10.0	650	250A	7.5	815
		15.0	930			
TE05 - TW-E 100/58/41		5.0	560		5.0	590
	300A	10.0	680	300A	10.0	865
		15.0	840			
		5.0	495	400A	5.0	530
	400A	15.0	560	400A	10.0	745
		5.0	495		5.0	530
	500A	10.0	530	500A	10.0	560
		15.0	560		15.0	745
TE06 - TW-E 110/72/41		5.0	495		5.0	530
	600A	10.0	560	600A	10.0	560
		15.0	560		15.0	745
		5.0	495		5.0	535
	800A	10.0	530	800A	10.0	555
		15.0	535		15.0	710
TE07 - TW-E 135/85/30		5.0	510		5.0	555
	1000A	15.0	605	1000A	15.0	770
		5.0	510		5.0	530
	800A	10.0	555	800A	10.0	570
TE08 - TW-E 159/113/40		15.0	680		15.0	865
		5.0	495		5.0	530
	1000A	15.0	680	1000A	15.0	865
		15.0	745			
TE09 - TW-E 165/130/30	1200A		680	1200A		865
			865	1500A		1,030
	1500A	15.0	895	1600A	15.0	1,075
	1600A		985	2000A		1,160
TE10 - TW-E 190/150/40 (w/o casing)	2000A		1,105	2400A		1,285
	2400A	15.0		2500A	15.0	
	2500A		1,200	3000A		1,390
TE11 - TW-E 235/200/35 (w/o casing)	3000A		1,490	3200A	15.0	1,660
	3200A	15.0	2,025			
	4000A		2,695			
	5000A	15.0				

### Accessories (Optional) - Wall Mounting Bracket

Sr. No.	OD/ID (AXIAL)	LP (INR)
1	73/30 (50)	45
2	92/43 (41)	50
3	100/58 (41)	60
4	110/72 (41)	60
5	159/113 (40)	65

### Notes :

1. Please add INR 120 for 1A secondary current (Before ordering, please check feasibility with local sales office)
2. Please add INR 35 for Busbar Mounting Kit

## TW-E series (without encapsulation)

Standard Secondary current: 5A

MODEL XP01	CL 5P10		
	PRIMARY CURRENT	VA	LP (INR)
140/30(140)	100A	15	7695
140/30(100)	150A	15	4715
140/50(100)	200A	15	3985
140/50(90)	250A	15	3985
140/60(80)	400A	15	2315
140/60(60)	600A	15	2175
140/80(80)	800A	15	2205
160/105(70)	1000A	15	2280
160/105(70)	1200A	15	2315
160/105(70)	1250A	15	2315
180/115(50)	1600A	15	2380
185/130(50)	2000A	15	2425

**Note :-**

1. Please add INR 120 for 1A secondary current (Before ordering, please check feasibility with local sales office)



# Metering Current Transformers



## Summation CT

Standard Secondary current: 5A

MODEL	Class 1			Class 0.5		
	PRIMARY CURRENT	VA	LP (INR)	PRIMARY CURRENT	VA	LP (INR)
XU01 (Rish Xmer Sigma 72)	5+5	5.0	1,445	5+5	5.0	1,615
		10.0	1,470		10.0	1,625
		15.0	1,495		15.0	1,655
		20.0	1,625			
		25.0	1,655			
	5+5+5	5.0	1,470	5+5+5	5.0	1,705
		10.0	1,490		10.0	1,725
		15.0	1,520		15.0	1,755
		20.0	1,725			
		25.0	1,755			
	5+5+5+5	5.0	1,480	5+5+5+5	5.0	1,765
		10.0	1,495		10.0	1,800
		15.0	1,520		15.0	1,810
		20.0	1,795			
		25.0	1,810			
XU01 (Rish Xmer Sigma 150)	5+5+5+5+5	5.0	1,605	5+5+5+5+5	5.0	1,855
		10.0	1,625		10.0	1,875
		15.0	1,650		15.0	1,930
		20.0	1,875			
		25.0	1,930			
	5+5+5+5+5+5	5.0	1,635	5+5+5+5+5+5	5.0	1,935
		10.0	1,655		10.0	1,965
		15.0	1,670		15.0	1,985
		20.0	1,965			
		25.0	1,985			
	5+5+5+5+5+5+5	5.0	1,690	5+5+5+5+5+5+5	5.0	1,965
		10.0	1,715		10.0	1,985
		15.0	1,740		15.0	2,015
		20.0	1,985			
		25.0	2,015			
5+5+5+5+5+5+5+5	5.0	1,785	5+5+5+5+5+5+5+5	5.0	2,035	
	10.0	1,825		10.0	2,080	
	15.0	1,845		15.0	2,130	
	20.0	2,070				
	25.0	2,130				

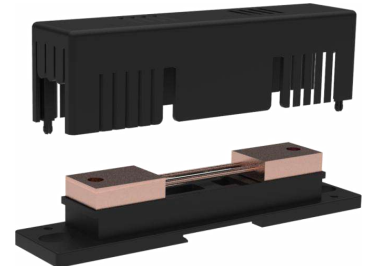
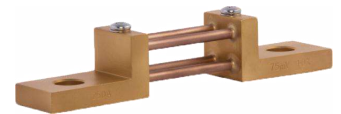


# DC Shunts



## Shunts - Accuracy Class 0.5

Current Rating (A)	LP (INR)		
	YN01		
	50/60/75mV	100mV	150mV
1	300	445	505
5	300	490	515
10	300	490	515
15	300	545	570
20	300	545	580
25	355	535	570
30	345	565	610
40	345	565	625
50	355	565	710
60	345	605	885
75	345	640	1,020
100	445	760	1,195
125	550	975	1,255
150	550	975	1,460
175	955	1,210	1,720
200	970	1,305	1,850
250	1,070	1,460	2,140
300	1,385	1,690	2,490
400	1,525	2,075	2,865
500	1,590	2,240	3,190
600	1,685	2,500	3,620
750	1,875	2,620	4,325
800	2,670	3,905	5,910
1000	4,090	4,790	8,255
1200	4,440	5,200	10,740
1250	5,615	6,545	11,550
1500	6,460	7,195	12,730
2000	6,790	8,855	18,850
2500	7,340	10,475	20,045
3000	8,035	13,545	22,680
4000	11,430	20,410	29,215
5000	18,150	24,920	36,045
6000	29,165	31,805	46,655
7500	35,335	43,495	58,885
10000	69,085	87,790	92,005
12000	84,770	104,995	116,705
15000	117,955	129,325	141,665



### Note :-

1. For 0.2 Accuracy Class Shunt (upto 2500A), multiply the standard price by 1.3
2. "Insulating Base" are supplied for 1 to 30A shunts only

---

## Terms and conditions

- This issue of Price List supersedes all previous Price Lists
- All Prices are in INR
- The prices are subject to change without prior notice
- List Prices mentioned are exclusive of all taxes & duties
- Prices charged will be as prevailing on the date of dispatch
- Minimum order value criterion should be observed while ordering
- The company reserves the right to supply goods at its discretion
- For any non-standard requirement, please contact nearest sales office regarding technical feasibility, price & delivery

## Warranty

- All the products listed in the Price List carry a warranty of 18 months against manufacturing defects (unless otherwise specified) from the date of purchase or 12 months from the date of commissioning, whichever is earlier

## Note

- To facilitate the ordering kindly make use of product configurator
- Kindly refer respective datasheets for detailed technical specifications. Technical specs given in this price list are in abbreviated form only for easy understanding. Selection of products must be done from the latest datasheets.
- The product approvals mentioned in the price list are on generic level, kindly contact to our nearest sales office for product-wise approvals details



Rev : LP / 2024 / AE / 01 this replaces, Rev : LP / 2023 / AE / 02 dated 31 / 01 / 2023

Product upgradation is a continuous process. Hence, data in this pricelist is subject to change without prior notice. For the latest information, please get in touch with our Sales Offices.



Measure



Control



Record



Analyze



Optimize

## RISHABH INSTRUMENTS LIMITED

Domestic (India): +91 253 2202028/99 | [marketing@rishabh.co.in](mailto:marketing@rishabh.co.in)

[www.rishabh.co.in](http://www.rishabh.co.in)