

Digital Expertise



Rishabh Instruments Pvt. Ltd.

Price List w.e.f 1st January 2020

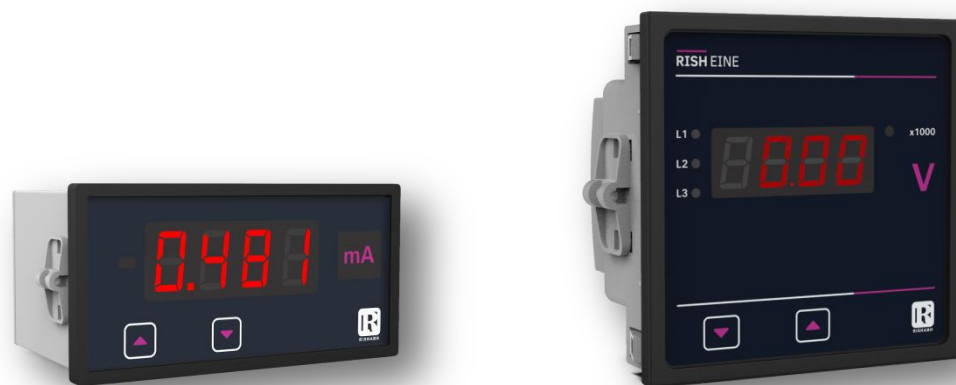
RISHABH

Index

Digital Expertise	Page No
Digital Panel Meters	02
Multi-Function Meters	05
Electrical Transducers	09
Isolators	13
Controllers	14
Protection and Monitoring Relay	15
Battery Chargers and Power Supply	19
Terms and conditions	21

Model	KMAT	Size	Description	Auxiliary Supply	LP (INR)
Programmable AC Ammeter					
Rish Eine I	EP99	48 x 96 x 68 mm	Input : 1A /5A (Programmable) Display : 14 mm LED Display 1 Phase Network Accuracy Class : 1.0 4 Digit	40...300V AC/DC 20...40V AC / 20...60V DC	770
		96 x 96 x 40 mm	Input 1A /5A (Programmable) Display : 14 mm LED Display 3Ph 3W/4W Network Accuracy Class : 1.0 4 Digit		1270
		48 x 96 x 68 mm	Input : 100mA (Primary - 63 / 125 / 250A programmable) Display : 14 mm LED Display 3Ph 3W/4W Network Accuracy Class : 0.5 4 Digit		1400
Programmable AC Voltmeter					
Rish Eine V	EP99	48 x 96 x 68 mm	Input : 57.5 -300 V L-N (Programmable) & 600VLN (Fixed) Display : 14 mm LED Display 1 Phase Network Accuracy Class : 1.0 4 Digit	40...300V AC/DC 20...40V AC / 20...60V DC	770
		96 x 96 x 40 mm	Input : 100- 500 V L-L (Programmable) Display : 14 mm LED Display 3Ph 3W/4W Network Accuracy Class : 1.0 4 Digit		1270
Non- Programmable AC Ammeter					
Rish ACI	DA14	72 x 144 x 94 mm	Input : 1 / 5A (To be specified while ordering only) Display : 26 mm LED Display Single Phase Network Accuracy Class : 1 4 1/2 Digit	110 / 230V AC	3600
				24 / 110 / 220V DC	4550
Non- Programmable AC Voltmeter					
Rish ACV	DA14	72 x 144 x 94 mm	Input : 110 / 240 / 500V (To be specified while ordering only) Display : 26 mm LED Display Single Phase Network Accuracy Class : 1 4 1/2 Digit	110 / 230V AC	3600
				24 / 110 / 220V DC	4550
Optional Accessories			Accuracy Class 0.5 for Rish Eine & Rish ACI / ACV 72x144		210
			400Hz for Rish Eine & ACI/ACV 72 x 144 only		200
			Side mounting clamp (Applicable for 96 x 96mm size)		20
Programmable DC Ammeter					
Rish Eine +	EI99	96 x 96 x 40 mm 48 x 96 x 75 mm	Input : -10...0...+10mA / -20...0...+20mA / 4...20mA / -1...0...+1A / -5...0...+5A Accuracy Class : 0.5 4 Digit (Input range to be specified while ordering only)	40...300VAC/DC or 20...40VAC & 20...60VDC	1180

Model	KMAT	Size	Description	Auxiliary Supply	LP (INR)
Non - Programmable DC Ammeter					
Rish ADC	DD14	48 x 96 x 138 mm	Input : 0 - 20 & 4 - 20mA Display : 14 mm LED Display Accuracy Class : 0.1 4 1/2 Digit	110 / 230V AC	1980
				24 / 110 V DC	2590
Rish ADC	DD14	96 x 96 x 55 mm	Input : 0 - 20 & 4 - 20mA Display : 14 mm LED Display Accuracy Class : 0.1 4 1/2 Digit	110 / 230V AC	2100
				24 / 110 V DC	2680
Rish ADC	DD14	72 x 144 x 94 mm	Input : 0 - 20 & 4 - 20mA Display : 26 mm LED Display Accuracy Class : 0.1 4 1/2 Digit	110 / 230V AC	3950
				24 / 110 V DC	4640
Programmable DC Voltmeter					
Rish Eine +	EI99	96 x 96 x 40 mm 48 x 96 x 75 mm	Input : -75...0...+75mV / -150...0...+150mV / -5...0...+5V / -10...0...+10V / 0...500V / 0...1000V Accuracy Class : 0.5 4 Digit (Input range to be specified while ordering only)	40...300VAC/DC or 20...40VAC & 20...60VDC	1180
Non - Programmable DC Voltmeters					
Rish VDC C	DD14	48 x 96 x 138 mm	Input : 0 - 60 / 75 / 150 / 200mV Display : 14 mm LED Display Accuracy Class : 0.1 4 1/2 Digit	110 / 230V AC	2040
				24 / 110 V DC	2660
Rish VDC F	DD14	48 x 96 x 138 mm	Input : 0 - 2 / 20 / 200 / 500 / 1000V Display : 14 mm LED Display Accuracy Class : 0.1 4 1/2 Digit	110 / 230V AC	2130
				24 / 110 V DC	2790
Rish VDC C	DD14	96 x 96 x 55 mm	Input : 0 - 60 / 75 / 150 / 200mV Display : 14 mm LED Display Accuracy Class : 0.1 4 1/2 Digit	110 / 230V AC	2130
				24 / 110 V DC	2760
Rish VDC F	DD14	96 x 96 x 55 mm	Input : 0 - 2 / 20 / 200 / 500 / 1000V Display : 14 mm LED Display Accuracy Class : 0.1 4 1/2 Digit	110 / 230V AC	2130
				24 / 110 V DC	2760
Rish VDC C	DD14	72 x 144 x 94 mm	Input : 0 - 60 / 75 / 150 / 200mV Display : 26 mm LED Display Accuracy Class : 0.1 4 1/2 Digit	110 / 230V AC	3910
				24 / 110 V DC	4590
Rish VDC F	DD14	72 x 144 x 94 mm	Input : 0 - 2 / 20 / 200 / 500 / 1000V Display : 26 mm LED Display Accuracy Class : 0.1 4 1/2 Digit	110 / 230V AC	3910
				24 / 110 V DC	4590



Model	KMAT	Size	Description	Auxiliary Supply	LP (INR)
Power DPM					
Power DPM	PP44	96 x 96 x 80 mm	Input : 63.5 / 133 / 239.6 / 254V L-N 110 / 230 / 415 / 440V L-L & 1 or 5A Display : 11 mm or 20 mm LED Display Single & 3Ph 3W/4W Network Accuracy Class : 1) KW / KVA - $\pm 0.5\%$ of range 2) KVAR - $\pm 1\%$ of range Power Range : Max 250MVA according to CT/PT Ratio 4 Digit	110 / 230VAC	3740
				12 - 48VDC 100 - 250 VAC/DC	4500
Power DPM	PP44	72 x 144 x 78 mm	Input : 63.5 / 133 / 239.6 / 254V L-N 110 / 230 / 415 / 440V L-L & 1 or 5A Display : 26 mm LED Display Single & 3Ph 3W/4W Network Accuracy Class : 1) KW / KVA - $\pm 0.5\%$ of range 2) KVAR - $\pm 1\%$ of range Power Range : Max 250MVA according to CT/PT Ratio 4 Digit	45...300VAC/DC or 20...40VAC & 20...60VDC	5040
Power Factor DPM					
PF DPM	PF44	96 x 96 x 80 mm	Input : 63.5 / 133 / 239.6 / 254V L-N 110 / 230 / 415 / 440V L-L & 1 or 5A Display : 11 mm or 20 mm LED Display Single & 3Ph 3W/4W Network Accuracy Class : $\pm 2^\circ$ 4 Digit	110 / 230VAC	3910
				12 - 48VDC 100 - 250 VAC/DC	4500
PF DPM	PF44	72 x 144 x 78 mm	Input : 63.5 / 133 / 239.6 / 254V L-N & 5A 110 / 230 / 415 / 440V L-L & 5A Display : 26 mm LED Display Single & 3Ph 3W/4W Network Accuracy Class : $\pm 2^\circ$ 4 Digit	45...300VAC/DC or 20...40VAC & 20...60VDC	5180
Frequency DPM					
Rish DPM Hz	DH10	48 x 96 x 68 mm	Input : 50...500V Range: 10...500Hz Accuracy : $\pm 0.5\text{Hz} \pm 1$ Digit 4 Digit	40...300V AC/DC 20...40V AC / 20...60V DC	1290
Rish DPM Hz	DH10	96 x 96 x 55 mm			
Rish DPM Hz	DH10	72 x 144 x 78 mm			
Optional Accessories			Side mounting clamp (Applicable for 96 x 96mm size)		20



KMAT	Model	Description	Auxiliary Supply	LP (INR)
LED Meters				
Basic Range				
VF10	Rish Optima VAF	Input : 100...500 V L-L 1 / 5A 3 Line LED Display 3Digit Single Ph & 3Ph 3W/4W Network Accuracy Class : 1 Parameters : VAF + RH + OH + NI + MM + RPM	40 - 300V AC/DC or 20-40 V AC/20-60 V DC	1500
DL10	Rish Delta VAF	Input : 100...500 V L-L 1 / 5A 3 Line LED Display Single Ph & 3Ph 3W/4W Network Accuracy Class : 1 Parameters : VAF + RH + OH + NI + MM + RPM		2050
DL20	Rish Delta Power	Input : 100...500 V L-L 1 / 5A 3 Line LED Display Single Ph & 3Ph 3W/4W Network Accuracy Class : 1 Parameters : VAF + kW + kVA + PF + PA + RH + OH + NI + MM + RPM	40 - 300V AC/DC or 12- 48 V DC	3090
DL30	Rish Delta Energy	Input : 100...500 V L-L 1 / 5A 3 Line LED Display Single Ph & 3Ph 3W/4W Network Accuracy Class : 1 Parameters : VAF + kW + kVA + kWh + kVAh + PF + PA + RH + OH + NI + MM + RPM + DM + MD		5330
AC Energy Meter				
EM90	EM 3490	Input : 110 / 230 / 415 / 440 V L-L for 3Ph 3W/4W or 110 / 240 V L-N for Single Phase 1A / 5A Counter type Energy Meter with Fixed CT Ratio Accuracy Class : 1 Parameters : kWh	Self Powered AC	3340
EM91	EM 3490SS	Input : 110 / 230 / 415 / 440 V L-L 1 / 5A Energy Meter with LED Display Single Ph & 3Ph 3W/4W Network Accuracy Class : 1 Parameters : kWh	110V/230V/380V AC or 12 - 48V DC / 100-250V AC/DC	4030
EM92	EM 3490DS	Input : 110 / 230 / 415 V L-L 1 / 5A Dual Source Energy Meter with LED Display Single Ph & 3Ph 3W/4W Network Accuracy Class : 1 Parameters : VAF + kW + kVA + kWh + kVAh + PF + RH + OH + NI		5060
DC Energy Meter				
EM 93	Rish EMDC -6001	Basic Model 6001 4 Channel (without USB RTC & In-built Memory for Data logging) Input Voltage : 10-60 / 61-200 / 201-1000V DC Accuracy Class : 1 Parameters : VA + kW + kWh + RH + OH + NI + DM	60...300V AC/DC or 12 - 70 VDC	7190
EM 93	Rish EMDC -6002	Higher Model 6002 4 Channel (with USB + RTC + In-built Memory for Data logging) Input Voltage : 10-60 / 61-200 / 201-1000V DC Accuracy Class : 1 Parameters : VA + kW + kWh + RH + OH + NI + DM + MD		10070
Advanced Range				
MA3A	Rish Master 3430	Input : On site Programmable (Voltage - 57.7 - 346 VL-N) (Current - 1/5A) Single Phase Network Accuracy Class : 1 Parameters : VAF + kW + kVA + kWh + kVAh + PF + PA + MM + NC + THD	60- 300V AC/DC or 12-60 V AC/DC #	6110
		Input : On site Programmable (Voltage - 100 - 600 V L-L) (Current - 1/5A) 3Ph 3W/4W Network Accuracy Class : 1 Parameters : VAF + kW + kVA + kWh + kVAh + PF + PA + MM + NC + THD		6470

For Ethernet port the aux will be 65...300V AC/DC

KMAT	Model	Description	Auxiliary Supply	LP (INR)
MA4A	Rish Master 3440	Input : On site Programmable (Voltage - 57.7 - 346 VL-N) (Current - 1/5A) Single Phase Network Accuracy Class : 1 Parameters : VAF + kW + kVAr + kVA + kWh + kVArh + kVAh + PF + PA + RH + OH + NI + MM + DM + MD + NC + THD	60- 300V AC/DC or 12-60 V AC/DC #	7920
		Input : On site Programmable (Voltage - 100 - 600 V L-L) (Current - 1/5A) 3Ph 3W/4W Network Accuracy Class : 1 Parameters : VAF + kW + kVAr + kVA + kWh + kVArh + kVAh + PF + PA + RH + OH + NI + MM + DM + MD + NC + THD		8620
LCD Meters				
WHOP	Rish EM 1320	Input : 100...500 V L-L 1 / 5A Single Phase 3Ph 3W/4W Network with LCD Display Accuracy Class : 1 Parameters : kWh	60...300VAC/DC 20...40VAC or 20...60VDC	2600
WHOP	Rish EM 1330	Input : 100...500 V L-L 1 / 5A Single Phase 3Ph 3W/4W Network with LCD Display Accuracy Class : 1 Parameters : VAF + kW + kWh + PF + PA + RH + OH + NI + MM + NC		3000
WHOP	Rish EM 1340	Input : 100...500 V L-L 1 / 5A Single Phase 3Ph 3W/4W Network with LCD Display Accuracy Class : 1 Parameters : VAF + kW + kVAr + kVA + kWh + kVArh + kVAh + PF + PA + RH + OH + NI + MM + DM + MD + NC + THD		4610
WHOP	Rish EM 2340DS	Input : 100...500 V L-L 1 / 5A Dual Source Energy Meter with LCD Display Single Phase 3Ph 3W/4W Network Accuracy Class : 1 Parameters : VAF + kW + kVAr + kVA + kWh + kVArh + kVAh + PF + PA + RH + OH + NI + MM + DM + MD + NC + THD		3520
MA4L	Rish LM 1350	Input : On site Programmable (Voltage - 100 - 600 V L-L) (Current - 1/5A) Big LCD Display 3Ph 3W/4W Network Accuracy Class : 0.5S Parameters : VAF + kW + kVAr + kVA + kWh + kVArh + kVAh + PF + PA + RH + OH + NI + MM + NC + THD + RPM	100-550V AC/DC or 12-60V AC/DC	7500
		Input : On site Programmable (Voltage - 100 - 600 V L-L) (Current - 100mA over RJ12) Big LCD Display 3Ph 3W/4W Network Accuracy Class : 1 Parameters : VAF + kW + kVAr + kVA + kWh + kVArh + kVAh + PF + PA + RH + OH + NI + MM + NC + THD + RPM		6500
MA4L	Rish LM 1360	Input : On site Programmable (Voltage - 100 - 600 V L-L) (Current - 1/5A) Big LCD Display 3Ph 3W/4W Network Accuracy Class : 0.5S Parameters : VAF + kW + kVAr + kVA + kWh + kVArh + kVAh + PF + PA + RH + OH + NI + MM + DM + MD + NC + THD + RPM + IH		8500
		Input : On site Programmable (Voltage - 100 - 600 V L-L) (Current - 100mA over RJ12) Big LCD Display 3Ph 3W/4W Network Accuracy Class : 1 Parameters : VAF + kW + kVAr + kVA + kWh + kVArh + kVAh + PF + PA + RH + OH + NI + MM + DM + MD + NC + THD + RPM + IH		7500

Aux supply will be 100-550 VAC/DC for accuracy class 0.2s & for Ethernet port the aux will be 65...300V AC/DC



KMAT	Model	Description	Auxiliary Supply	LP (INR)		
Touch Screen Meters						
MA3I	Rish Master 3430 i	Input : On site Programmable (Voltage - 57.7 - 346 VL-N) (Current - 1/5A) Single Phase Network Accuracy Class : 1 Parameters : VAF + kW + kVAr + kVA + kWh + kVArh + kVAh + PF + PA + MM + NC + THD	60- 300V AC/DC or 12-60 V AC/DC #	7860		
		Input : On site Programmable (Voltage - 100 - 600 V L-L) (Current - 1/5A) 3Ph 3W/4W Network Accuracy Class : 1 Parameters : VAF + kW + kVAr + kVA + kWh + kVArh + kVAh + PF + PA + MM + NC + THD		8390		
MA4I	Rish Master 3440 i	Input : On site Programmable (Voltage - 57.7 - 346 VL-N) (Current - 1/5A) Single Phase Network Accuracy Class : 1 Parameters : VAF + kW + kVAr + kVA + kWh + kVArh + kVAh + PF + PA + RH + OH + NI + MM + DM + MD + NC + THD		60- 300V AC/DC or 12-60 V AC/DC #	10010	
		Input : On site Programmable (Voltage - 100 - 600 V L-L) (Current - 1/5A) 3Ph 3W/4W Network Accuracy Class : 1 Parameters : VAF + kW + kVAr + kVA + kWh + kVArh + kVAh + PF + PA + RH + OH + NI + MM + DM + MD + NC + THD			10540	
MA4S	Rish Master 3440 iDL	Input : On site Programmable (Voltage - 100 - 600 V L-L) (Current - 1/5A) 3Ph 3W/4W Network With Data logging  Accuracy Class : 0.2s Parameters : VAF + kW + kVAr + kVA + kWh + kVArh + kVAh + PF + PA + RH + OH + NI + MM + DM + MD + NC + THD + IH + RTC Output - RS485 - 2 Pulse Output			100-550V AC/DC or 12-60V AC/DC	16240
		Input : On site Programmable (Voltage - 100 - 600 V L-L) (Current - 1/5A) 3Ph 3W/4W Network With Data logging Accuracy Class : 0.2s Parameters : VAF + kW + kVAr + kVA + kWh + kVArh + kVAh + PF + PA + RH + OH + NI + MM + DM + MD + NC + THD + IH + RTC Output - RS485 - 1 Pulse Output - 2 Analog Output				18000
		Input : On site Programmable (Voltage - 100 - 600 V L-L) (Current - 1/5A) 3Ph 3W/4W Network With Data logging Accuracy Class : 0.2s Parameters : VAF + kW + kVAr + kVA + kWh + kVArh + kVAh + PF + PA + RH + OH + NI + MM + DM + MD + NC + THD + IH + RTC Output - Ethernet (MODBUS TCP/IP)	20770			
Power Quality Monitor						
PA00	Rish PQM	Input : On site Programmable (Voltage - 100 up to 500 V L-L) (Current - 1/5A) 3Ph 3W/4W Network Accuracy Class : 0.5s Parameters : VAF + kW + kVAr + kVA + kWh + kVArh + kVAh + PF + PA + RH + OH + NI + MM + DM + MD + NC + THD + IH + RTC + SG + SW + OC	60-300V AC/DC	14820		
Advanced Dual Source Energy Meter						
WH10	Rish 3490DS i	Input : On site Programmable (Voltage - 100 up to 500 V L-L) (Current - 1/5A) 3Ph 3W/4W Network or 1 Phase Accuracy Class : 0.5s Parameters : VAF + kW + kVAr + kVA + kWh + kVArh + kVAh + PF + PA + RH + OH + NI + MM + DM + MD + NC + THD + IH + RTC + GE	60-300V AC/DC	15630		
Smart Demand Controller						
DM82	Rish DMC i	Input : On site Programmable (Voltage - 100 up to 500 V L-L) (Current - 1/5A) 3Ph 3W/4W Network or 1 Phase Accuracy Class : 0.5s with 4 Relay output Parameters : VAF + kW + kVAr + kVA + kWh + kVArh + kVAh + PF + PA + RH + OH + NI + MM + DM + MD + NC + THD + IH + RTC	60-300V AC/DC	23970		

Aux supply will be 100-550 VAC/DC for accuracy class 0.2s & for Ethernet port the aux will be 65...300V AC/DC

KMAT	Model	Description	Auxiliary Supply	LP (INR)
Power Quality Analyzer				
PA10	Rish PQA	Input : Voltage - 100 up to 866 V L-L Current - 1/5A 3Ph 3W/4W Network Accuracy Class : 0.2s, External memory card, 2 Relay, RS 485 Parameters : Refer to the datasheet	85-265V AC/DC	86500
Optional Accessories for Multi-function Meters*				
1	Accuracy class 0.5	RM 3430, RM 3440, RM 3430i, RM 3440i, EM 3490, EM 3490SS, EM 3490DS		1380
2	Accuracy class 0.2	RM 3430, RM 3440, RM 3430i, RM 3440i		2290
3	Accuracy class 0.2S	RM 3440, RM 3440i, LM 1350/60 # Aux supply will be 100-550 VAC/DC		2500
4	RS485 (Modbus)	EM 13xx, EM 3490SS, EM 3490DS, EM 2340DS, Delta Energy, PQM, DMCI, RM 3490DSi RISH EMDC		1100
5	RS485 + 2 Relay / Pulse	RM 3430, RM 3440, RM 3430i, RM 3440i, LM 1350/1360		1100
6	RS485 + 1 Relay / Pulse + 2 Analog	RM 3430, RM 3440, RM 3430i, RM 3440i		2860
7	1 Relay o/p (Pulse /Limit)	EM 1330, EM 1340, EM 3490, EM 3490SS, EM 3490DS, EM1320, EM 2340DS, Delta Energy, Optima VAF, Delta Power		1010
8	2 Pulse /Relay	EM 1330, EM 1340, EM 1320, EM 2340DS, PQM, RM 3490DSi, EMDC		1380
9	Ethernet Interface (MODBUS TCP/IP Protocol)	RM 3430, RM3430i, RM 3440, RM 3440i, PQM, LM 1350/60		3530
10	Terminal Sealing	EM 3490, 3490SS		100
11	DIP Switch	Instead of Fixed CT Ratio for EM 3490		460
12	Thumb Wheel	Instead of Fixed CT Ratio for EM 3490		1100
13	Converter 1	RS 485 to RS 232 Converter (Self Powered)		2290
14	Converter 2	RS 485 to USB Converter (Self Powered)		5500
15	4 Relay	Rish EM DC		2290
16	Data logging + Ethernet + RTC	LM 1350/1360		4200
17	Data logging + USB + RTC + RS 485 + 2 Relay	LM 1350/1360		3200
18	400Hz	RM 3440		530
19	IP 65 Kit	For 96x96 size models		130
20	Side mounting clamp	Optima VAF / Delta Series / LM 13xx Series / EM 13xx / EM 2340		20
21	GSM Module + Marc Software	a. FREE LIFETIME LICENCE -- ONLINE VIEWING of Rishabh make Energy meter's Data on marc software (Mobile App and Web Application). b. 5 Year data charges of GSM SIM Card. c. Per Gateway 31 Energy meters can be connected in Daisy chain as a Slave. Note: 1. Rishabh GSM Gateway works on 2G network. 2. The minimum Signal strength of network should be -70dbm to -85dbm 3. Availability of good signal strength is not in Rishabh Scope GSM Service selector should be suggested by Customer. The GSM Module will be provided for Rish LM13XX and Rish EM13XX/23XX only and to be mentioned while ordering.		27800
Before selecting any single or multiple optional accessories / outputs please refer to the respective datasheets to check feasibility				

List of abbreviation

VAF - Voltage Current & Frequency	PA - Phase Angle	THD - % Total Harmonics distortion
kW - Active Power	RH - Run Hour	IH - Individual Harmonics
kVAr - Reactive Power	OH - On Hour	RTC - Real time clock
kVA - Apparent Power	NI - No. of interruptions	SG - Sag
kWh - Active Energy	MM - Min / Max Parameters	SW - Swell
kVArh - Reactive energy	DM - Demand	OC - Over Current
kVAh - Apparent Energy	MD - Max Demand	GE - Generator Event
PF - Power Factor	NC - Neutral Current	

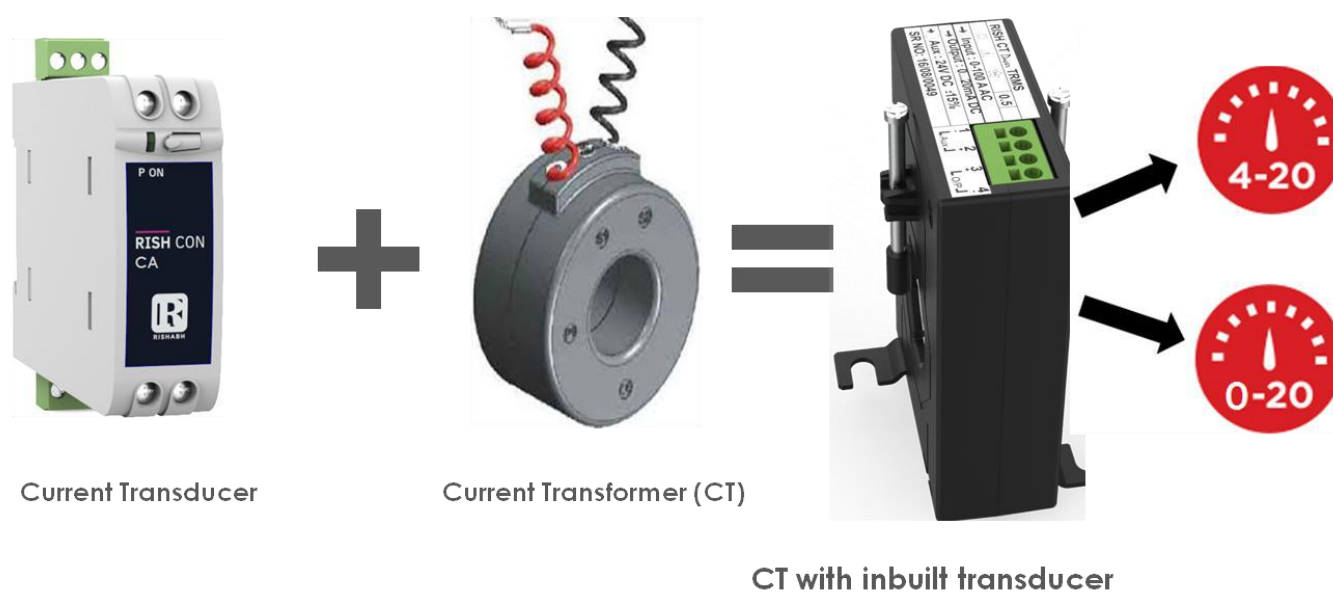
KMAT	Model	Description	Auxiliary Supply	LP (INR)
Electrical Transducer				
Programmable Rish CON Series				
CM41	Rish CON I	Type : Current (TRMS) Input : 1...5A Output : 0...20mA / 4...20mA OR 0...10V Accuracy Class : 0.2	60...300VAC/DC or 24...60VAC/DC	3360
CM41	Rish CON V	Type : Voltage (TRMS) Input : 57...500V Output : 0...20mA / 4...20mA OR 0...10V Accuracy Class : 0.2		3360
CF41	Rish CON Hz	Type : Frequency (TRMS) Input : 45...55 / 48...52 / 55...65 / 45...65 Hz (57...500V) Output : 0...20mA / 4...20mA OR 0...10V Accuracy Class : 0.2		3740
CP41	Rish CON P	Type : Power / Power Factor (TRMS) Input : 100...500V LL 1...5A Output : 0...20mA / 4...20mA OR 0...10V / -20mA...0...+20mA / -10V...0...+10V Accuracy Class : 0.2		7340
PR43	Rish CON M	Type : Multi-transducer (TRMS) Input : 100 or 400V L-L 1 or 5A (To be selected while ordering only) Output : 0 / 2 / 4 Analog -20...0...20mA & 0 / 2 / 4 Relay (M-04 M-22 M-40) Communication Port : MODBUS RS 485 & USB Accuracy Class : 0.5	85...253 VAC / 90...320 VDC or 20...40 VAC / 20...60 VDC	12820
Programmable Rish Ducer MXX Series				
PM11	Rish Ducer M20	Type : Multi-transducer Input : 100 to 693V L-L 1 to 6A (Configurable) Output : 2 Analog Outputs 0...20mA OR 0...10V (Configurable) Communication Port : RS 232 Accuracy Class : 0.2 for Voltage & Current Class : 0.15 for Frequency Class : 0.25 for Power & Power Factor	24...60 or 85...230VAC/DC	14140
	Rish Ducer M30	Type : Multi-transducer Input : 100 to 693V L-L 1 to 6A (Configurable) Output : 3 Analog Outputs 0...20mA OR 0...10V (Configurable) Communication Port : RS232 Accuracy Class : 0.2 for Voltage & Current Class : 0.15 for Frequency Class : 0.25 for Power & Power Factor		17730
	Rish Ducer M24	Type : Multi-transducer Input : 100 to 693V L-L 1 to 6A (Configurable) Output : 2 Analog Outputs 0...20mA OR 0...10V (Configurable) 4 Digital Outputs Communication Port : RS 232 Accuracy Class : 0.2 for Voltage & Current Class : 0.15 for Frequency Class : 0.25 for Power & Power Factor		17410
	Rish Ducer M42	Type : Multi-transducer Input : 100 to 693V L-L 1 to 6A (Configurable) Output : 4 Analog Outputs 0...20mA OR 0...10V (Configurable) 2 Digital Outputs Communication Port : RS 232 Accuracy Class : 0.2 for Voltage & Current Class : 0.15 for Frequency Class : 0.25 for Power & Power Factor		19000
	Rish Ducer M40	Type : Multi-transducer Input : 100 to 693V L-L 1 to 6A (Configurable) Output : 4 Analog Outputs 0...20mA OR 0...10V (Configurable) Communication Port : RS 232 & MODBUS RS 485 Accuracy Class : 0.2 for Voltage & Current Class : 0.15 for Frequency Class : 0.25 for Power & Power Factor		21280
PM11	Rish Ducer M01	Type : Multi-transducer Input : 100 to 693V L-L 1 to 6A (Configurable) Communication Port : RS 232 & MODBUS RS 485 Accuracy Class : 0.2 for Voltage & Current Class : 0.15 for Frequency Class : 0.25 for Power & Power Factor	24...60 or 85...230VAC/DC	15200
	Rish Ducer M00	Type : Multi-transducer Input : 100 to 693V L-L 1 to 6A (Configurable) Communication Port : RS 232 & LONBUS (LonWorks) Accuracy Class : 0.2 for Voltage & Current Class : 0.15 for Frequency Class : 0.25 for Power & Power Factor		18960

KMAT	Model	Description	Auxiliary Supply	LP (INR)
Non - Programmable Rish CON Series				
CM22	Rish CON CA	Type : Current AVG (Single input Single output) Input : 0...1 / 0...5A Output : 0..10mA / 0...20mA / 2..10mA / 4...20mA / 0...5V / 0...10V Accuracy Class : 0.2	40...300VAC/DC or 24...60VAC/DC	2350
CM21		Type : Current TRMS (Single input Single output) Input : 0...1 / 0...5A Output : 0..10mA / 0...20mA / 2..10mA / 4...20mA / 0...5V / 0...10V Accuracy Class : 0.2		3140
CM22	Rish CON CV	Type : Voltage AVG (Single input Single output) Input : 0...63.5V to 0...500V Output : 0..10mA / 0...20mA / 2..10mA / 4...20mA / 0...5V / 0...10V Accuracy Class : 0.2		2350
CM21		Type : Voltage TRMS (Single input Single output) Input : 0...63.5V to 0...500V Output : 0..10mA / 0...20mA / 2..10mA / 4...20mA / 0...5V / 0...10V Accuracy Class : 0.2		3140
CM23	Rish CON CA	Type : Current - AVG (Single input Dual output) Input Range : 0...1 / 0...5A Output : 0..10mA / 0...20mA / 2..10mA / 4...20mA / 0...5V / 0...10V Accuracy Class : 0.2	60...300 VAC/DC or 20...40VAC / 20...60VDC	3410
	Rish CON CV	Type : Voltage - AVG (Single input Dual output) Input : 0...63.5V to 0...500V Output : 0..10mA / 0...20mA / 2..10mA / 4...20mA / 0...5V / 0...10V Accuracy Class : 0.2		3410
Optional Accessories for Electrical Transducers				
400Hz		Rish CON P		530
RS 485		Rish CON V Rish CON I Rish CON Hz Rish CON P		1100
Display Module		Rish CON V Rish CON I Rish CON Hz Rish CON P		740
Dual Output		Rish CON V Rish CON I Rish CON Hz Rish CON P		665
Non Standard Input / Output		Rish CON CA / CV		920
PRKAB 601		Programming RS232 / USB & Configuration Adapter + Cable for Rish CON V Rish CON I Rish CON Hz Rish CON P		1200



New

KMAT	Model	Description	Auxiliary Supply	LP (INR)
CT with Inbuilt Transducer				
CCT1	RISH CTDucer 70 x 30mm	Type : Current TRMS (Single input Single output) Input : 0 - 50A Output : 0...20mA / 4...20mA Accuracy Class : 0.5%	24V DC ± 15%	3290
		Type : Current AVG (Single input Single output) Input : 0 - 50A Output : 0...20mA / 4...20mA Accuracy Class : 0.5%		1990
		Type : Current TRMS (Single input Single output) Input : 0 - 100A Output : 0...20mA / 4...20mA Accuracy Class : 0.5%		3340
		Type : Current AVG (Single input Single output) Input : 0 - 100A Output : 0...20mA / 4...20mA Accuracy Class : 0.5%		2040
		Type : Current TRMS (Single input Single output) Input : 0 - 150A Output : 0...20mA / 4...20mA Accuracy Class : 0.5%		3390
		Type : Current AVG (Single input Single output) Input : 0 - 150A Output : 0...20mA / 4...20mA Accuracy Class : 0.5%		2090
		Type : Current TRMS (Single input Single output) Input : 0 - 200A Output : 0...20mA / 4...20mA Accuracy Class : 0.5%		3440
		Type : Current AVG (Single input Single output) Input : 0 - 200A Output : 0...20mA / 4...20mA Accuracy Class : 0.5%		2140
		Type : Current TRMS (Single input Single output) Input : 0 - 250A Output : 0...20mA / 4...20mA Accuracy Class : 0.5%		3490
		Type : Current AVG (Single input Single output) Input : 0 - 250A Output : 0...20mA / 4...20mA Accuracy Class : 0.5%		2190
		Type : Current TRMS (Single input Single output) Input : 0 - 300A Output : 0...20mA / 4...20mA Accuracy Class : 0.5%		3540
		Type : Current AVG (Single input Single output) Input : 0 - 300A Output : 0...20mA / 4...20mA Accuracy Class : 0.5%		2240



New

KMAT	Model	Description	Auxiliary Supply	LP (INR)
CCT1	RISH CTDucer 90 x 40 mm	Type : Current TRMS (Single input Single output) Input : 0 - 150A Output : 0...20mA / 4...20mA Accuracy Class : 0.5%	24V DC ± 15%	3470
		Type : Current AVG (Single input Single output) Input : 0 - 150A Output : 0...20mA / 4...20mA Accuracy Class : 0.5%		2180
		Type : Current TRMS (Single input Single output) Input : 0 - 200A Output : 0...20mA / 4...20mA Accuracy Class : 0.5%		3520
		Type : Current AVG (Single input Single output) Input : 0 - 200A Output : 0...20mA / 4...20mA Accuracy Class : 0.5%		2230
		Type : Current TRMS (Single input Single output) Input : 0 - 250A Output : 0...20mA / 4...20mA Accuracy Class : 0.5%		3570
		Type : Current AVG (Single input Single output) Input : 0 - 250A Output : 0...20mA / 4...20mA Accuracy Class : 0.5%		2280
		Type : Current TRMS (Single input Single output) Input : 0 - 300A Output : 0...20mA / 4...20mA Accuracy Class : 0.5%		3620
		Type : Current AVG (Single input Single output) Input : 0 - 300A Output : 0...20mA / 4...20mA Accuracy Class : 0.5%		2330
		Type : Current TRMS (Single input Single output) Input : 0 - 400A Output : 0...20mA / 4...20mA Accuracy Class : 0.5%		3670
		Type : Current AVG (Single input Single output) Input : 0 - 400A Output : 0...20mA / 4...20mA Accuracy Class : 0.5%		2380
		Type : Current TRMS (Single input Single output) Input : 0 - 500A Output : 0...20mA / 4...20mA Accuracy Class : 0.5%		3720
		Type : Current AVG (Single input Single output) Input : 0 - 500A Output : 0...20mA / 4...20mA Accuracy Class : 0.5%		2430
		Type : Current TRMS (Single input Single output) Input : 0 - 600A Output : 0...20mA / 4...20mA Accuracy Class : 0.5%		3770
		Type : Current AVG (Single input Single output) Input : 0 - 600A Output : 0...20mA / 4...20mA Accuracy Class : 0.5%		2480
		Type : Current TRMS (Single input Single output) Input : 0 - 750A Output : 0...20mA / 4...20mA Accuracy Class : 0.5%		3850
		Type : Current AVG (Single input Single output) Input : 0 - 750A Output : 0...20mA / 4...20mA Accuracy Class : 0.5%		2550
Optional Accessory				
Accessory	Din Rail Mounting Kit			70

KMAT	Model	Description	Auxiliary Supply	LP (INR)
Process Transducer				
PI02	Rish PI 102	Type :Programmable Dual output DC Isolator Input Range : 0...12 / 0...10 / 0...5 / 1...5 VDC 0...20 / 0...10 / 4...20 / 0...24 mA DC Output : 0..10mA / 0...20mA / 2..10mA / 4...20mA / 0...5 / 1...5 / 0...10 / 2...10V Accuracy Class : 0.2	60...300 VAC/DC or 20...40VAC / 20...60VDC	2930
SI01	Rish CON SI-101	Type : Powerful DC Signal Isolator Input : DC Current : 0...20mA 4...20mA 1...5mA DC Voltage : 0...10V 2...10V 1...5V Output : DC Current : 0...20mA 4...20mA DC Voltage : 0...10V 2...10V Accuracy Class : 0.2	24...60V AC/DC or 60 ...300V AC/DC	1950
SI02	Rish CON SI-102	Type : Powerful DC Signal Isolator Input : DC Current : 0...20mA 4...20mA 1...5mA DC Voltage : 0...10V 2...10V 1...5V Output : DC Current : 0...20mA 4...20mA DC Voltage : 0...10V 2...10V Accuracy Class : 0.2		2940
	TV808	Type : DC Isolator 1 Input-1 Output (S17 or E8 Housing) Input : 0.1mA...20mA & 4...20mA & 0.06V...40V Output : DC Current 0...20mA 4...20mA DC Voltage : 0...5V 0...10V Accuracy Class : 0.2	24...60V AC/DC or 85 ...230V AC/DC	2450
TV08	TV808	Type : DC Isolator 1 Input-2 Output (S17 or E8 Housing) Input : 0.1mA...20mA & 4...20mA & 0.06V...40V Output : DC Current 0...20mA 4...20mA DC Voltage : 0...5V 0...10V Accuracy Class : 0.2		3430
	TV808	Type : DC Isolator 2 Input-2 Output (S17 Housing) Input : 0.1mA...20mA & 4...20mA & 0.06V...40V Output : DC Current 0...20mA 4...20mA DC Voltage : 0...5V 0...10V Accuracy Class : 0.2		3920
Tap Position Transducer				
	Rish CON TPT	Type : Tap Position Input : 0-17kOhm 0-18kOhm 0-20kOhm 0-25kOhm Output : DC Current : 0...20mA 4...20mA DC Voltage : 0...10V 2...10V Accuracy Class : 0.2	24...60V AC/DC or 60 ...300V AC/DC	4410
CT25	Rish CON TPT	Type : Tap Position with display Input : 0-17kOhm 0-18kOhm 0-20kOhm 0-25kOhm Output : DC Current : 0...20mA 4...20mA DC Voltage : 0...10V 2...10V Accuracy Class : 0.2		5280
	Rish CON TPT (96x96)	Type : Tap Position with display (96 X 96) Input : 0-17kOhm 0-18kOhm 0-20kOhm 0-25kOhm Output : DC Current : 0...20mA 4...20mA DC Voltage : 0...10V 2...10V Accuracy Class : 0.2		4860
Universal Transmitter				
V604	Rish Ducer V604	Type : Programmable Transmitter Input : DC Voltage/Current Resistance Temp.etc. Output : DC Current : 0...20mA 4...20mA DC Voltage : 0...5V 1...5V 0...10V 2...10V Accuracy Class : 0.2	24...60V AC/DC or 85 ...230V AC/DC	7440
Temperature Transmitter				
PT02	PT 602	Type : 1 Channel Temperature transmitter Input : Temperature Output : DC Current : 0...20mA 4...20mA DC Voltage : 0...10V Accuracy Class : 0.5	24...60V AC/DC or 85 ...230V AC/DC	5440
		Type : 2 Channel Temperature transmitter Input : Temperature Output : DC Current : 0...20mA 4...20mA DC Voltage : 0...10V Accuracy Class : 0.5		6810
Optional Accessories for Process Transducers				
RS 485		Rish CON TPT 96 X 96		1100
Non Standard Input / Output		Rish Ducer TV808 and Rish CON SI 101 / SI 102		740
PRKAB 600		Programming RS232 & Configuration Adapter + Cable for Rish Ducer V604		1200
PRKAB 601		Programming RS232 & Configuration Adapter + Cable for Rish CON TPT		1200

Group	Model	Size	Description	Auxiliary Supply	LP (INR)
PID Controllers - Basic					
TC41	RE56	48 x 48 x 87.35 mm	Input: RTD Sensors: PT100 Thermocouple Sensors: J T K S R Output: 1x SSR driving or 1x Relay Output; Accuracy Class as per Datasheet;	60 ... 280 V AC/DC	1350
TC40	RE57	48 x 48 x 87.35 mm	Input: RTD Sensors: PT100 PT1000 Thermocouple Sensors: J T K S R B N E Standard Signals: 0/4 ... 20mA or 0 ... 5 / 10V; Output: 1x SSR driving Output; Accuracy Class as per Datasheet;	60 ... 280 V AC/DC OR 20 ... 60V DC 20 V – 40V AC	2320
	RE96	96 x 96 x 72.15 mm			2550
	RE77	48 x 96 x 72.15 mm			2420
Extra Charges for RE57 / 77 / 96			1x Relay Output	-	140
			1x Relay + 1x SSR Output		400
			2x SSR Outputs		170
			2x Relay Output		540



Genset Controllers			
Group	Model	Order Code	LP (INR)
GC10	AMF 1000	GC10-A000000000000 - AMF1000 AUTOMATIC MAINS FAILURE	20860
	RI809	GC10-AT000000000000 - GENSET RI809ATS	19850
	RS 300	GC10-G000000000000 - RS 300 GENSET CONTROLLER	19360



Basic Protection Relay

New

Product Code	Description	System	Contact	Relay	List Price (INR)
Phase Failure Relay - Rish Relay PHR					
PR10-P411110000000	PhR 3P3W 110VLL 50Hz NE 1 Relay	3Ø3W	Normally Energized	1 Relay	890
PR10-P411210000000	PhR 3P3W 110VLL 50Hz ND 1 Relay	3Ø3W	Normally D-Energized	1 Relay	890
PR10-P412110000000	PhR 3P3W 110VLL 60Hz NE 1 Relay	3Ø3W	Normally Energized	1 Relay	890
PR10-P412210000000	PhR 3P3W 110VLL 60Hz ND 1 Relay	3Ø3W	Normally D-Energized	1 Relay	890
PR10-P421110000000	PhR 3P3W 240VLL 50Hz NE 1 Relay	3Ø3W	Normally Energized	1 Relay	890
PR10-P421210000000	PhR 3P3W 240VLL 50Hz ND 1 Relay	3Ø3W	Normally D-Energized	1 Relay	890
PR10-P422110000000	PhR 3P3W 240VLL 60Hz NE 1 Relay	3Ø3W	Normally Energized	1 Relay	890
PR10-P422210000000	PhR 3P3W 240VLL 60Hz ND 1 Relay	3Ø3W	Normally D-Energized	1 Relay	890
PR10-P431110000000	PhR 3P3W 415VLL 50Hz NE 1 Relay	3Ø3W	Normally Energized	1 Relay	890
PR10-P431210000000	PhR 3P3W 415VLL 50Hz ND 1 Relay	3Ø3W	Normally D-Energized	1 Relay	890
PR10-P432110000000	PhR 3P3W 415VLL 60Hz NE 1 Relay	3Ø3W	Normally Energized	1 Relay	890
PR10-P432210000000	PhR 3P3W 415VLL 60Hz ND 1 Relay	3Ø3W	Normally D-Energized	1 Relay	890
PR10-P441110000000	PhR 3P3W 440VLL 50Hz NE 1 Relay	3Ø3W	Normally Energized	1 Relay	890
PR10-P441210000000	PhR 3P3W 440VLL 50Hz ND 1 Relay	3Ø3W	Normally D-Energized	1 Relay	890
PR10-P442110000000	PhR 3P3W 440VLL 60Hz NE 1 Relay	3Ø3W	Normally Energized	1 Relay	890
PR10-P442210000000	PhR 3P3W 440VLL 60Hz ND 1 Relay	3Ø3W	Normally D-Energized	1 Relay	890
PR10-P511110000000	PhR 3P4W 110VLL 50Hz NE 1 Relay	3Ø4W	Normally Energized	1 Relay	890
PR10-P511210000000	PhR 3P4W 110VLL 50Hz ND 1 Relay	3Ø4W	Normally D-Energized	1 Relay	890
PR10-P512110000000	PhR 3P4W 110VLL 60Hz NE 1 Relay	3Ø4W	Normally Energized	1 Relay	890
PR10-P512210000000	PhR 3P4W 110VLL 60Hz ND 1 Relay	3Ø4W	Normally D-Energized	1 Relay	890
PR10-P521110000000	PhR 3P4W 240VLL 50Hz NE 1 Relay	3Ø4W	Normally Energized	1 Relay	890
PR10-P521210000000	PhR 3P4W 240VLL 50Hz ND 1 Relay	3Ø4W	Normally D-Energized	1 Relay	890
PR10-P522110000000	PhR 3P4W 240VLL 60Hz NE 1 Relay	3Ø4W	Normally Energized	1 Relay	890
PR10-P522210000000	PhR 3P4W 240VLL 60Hz ND 1 Relay	3Ø4W	Normally D-Energized	1 Relay	890
PR10-P531110000000	PhR 3P4W 415VLL 50Hz NE 1 Relay	3Ø4W	Normally Energized	1 Relay	890
PR10-P531210000000	PhR 3P4W 415VLL 50Hz ND 1 Relay	3Ø4W	Normally D-Energized	1 Relay	890
PR10-P532110000000	PhR 3P4W 415VLL 60Hz NE 1 Relay	3Ø4W	Normally Energized	1 Relay	890
PR10-P532210000000	PhR 3P4W 415VLL 60Hz ND 1 Relay	3Ø4W	Normally D-Energized	1 Relay	890
PR10-P541110000000	PhR 3P4W 440VLL 50Hz NE 1 Relay	3Ø4W	Normally Energized	1 Relay	890
PR10-P541210000000	PhR 3P4W 440VLL 50Hz ND 1 Relay	3Ø4W	Normally D-Energized	1 Relay	890
PR10-P542110000000	PhR 3P4W 440VLL 60Hz NE 1 Relay	3Ø4W	Normally Energized	1 Relay	890
PR10-P542210000000	PhR 3P4W 440VLL 60Hz ND 1 Relay	3Ø4W	Normally D-Energized	1 Relay	890
Current Relay - Rish Relay AR					
PR10-A100110000000	AR 1P NE 1 Relay	1Ø	Normally Energized		1590
PR10-A100120000000	AR 1P NE 2 Relay	1Ø	Normally Energized	2 Relay	1740
PR10-A100210000000	AR 1P ND 1 Relay	1Ø	Normally D-Energized	1 Relay	1590
PR10-A100220000000	AR 1P ND 2 Relay	1Ø	Normally D-Energized	2 Relay	1740
PR10-A300110000000	AR 3P NE 1 Relay	3Ø	Normally Energized	1 Relay	1740
PR10-A300120000000	AR 3P NE 2 Relay	3Ø	Normally Energized	2 Relay	1890
PR10-A300210000000	AR 3P ND 1 Relay	3Ø	Normally D-Energized	1 Relay	1740
PR10-A300220000000	AR 3P ND 2 Relay	3Ø	Normally D-Energized	2 Relay	1890
Voltage Relay - Rish Relay VR					
PR10-V150110000000	VR 1P 58-138VLN NE 1 Relay	1Ø	Normally Energized	1 Relay	1145
PR10-V150120000000	VR 1P 58-138VLN NE 2 Relay	1Ø	Normally Energized	2 Relay	1295
PR10-V180110000000	VR 1P 220-254VLN NE 1 RELAY	1Ø	Normally Energized	1 Relay	1145
PR10-V180120000000	VR 1P 220-254VLN NE 2 RELAY	1Ø	Normally Energized	2 Relay	1295
PR10-V310110000000	VR 3P 110-240VLL NE 1 RELAY	3Ø	Normally Energized	1 Relay	1295
PR10-V310120000000	VR 3P 110-240VLL NE 2 RELAY	3Ø	Normally Energized	2 Relay	1445
PR10-V360110000000	VR 3P 415-480VLL NE 1 Relay	3Ø	Normally Energized	1 Relay	1295
PR10-V360120000000	VR 3P 415-480VLL NE 2 Relay	3Ø	Normally Energized	2 Relay	1445
PR10-V370110000000	VR 3P 381-415VLL NE 1 RELAY	3Ø	Normally Energized	1 Relay	1295
PR10-V370120000000	VR 3P 381-415VLL NE 2 RELAY	3Ø	Normally Energized	2 Relay	1445



Digital Monitoring Relay

KMAT	Model	Description	Auxiliary Supply	LP (INR)
TR10	Rish Relay - I	Prog. 1PH Current 1-5A 1CO+1CO	60-300V AC/DC or 20-60V DC / 20-40V AC	2750
	Rish Relay - I	Prog. 1PH Current 1-5A 2CO		2750
	Rish Relay - I	Prog. 1PH Current 1-5A 1CO		2750
	Rish Relay - I	Prog. 3PH Current 1-5A 1CO+1CO		2790
	Rish Relay - I	Prog. 3PH Current 1-5A 2CO		2790
	Rish Relay - I	Prog. 3PH Current 1-5A 1CO		2790
	Rish Relay V/Hz	Prog. 1PH & 3PH V 100-600V L-L 1CO+1CO		2510
	Rish Relay V/Hz	Prog. 1PH & 3PH V 100-600V L-L 2CO		2510
	Rish Relay V/Hz	Prog. 1PH & 3PH V 100-600V L-L 1CO		2510
	Rish Relay V	Prog. 1PH & 3PH VOLT 100-600V L-L 1CO+1CO		2050
	Rish Relay V	Prog. 1PH & 3PH VOLT 100-600V L-L 2CO		2050
	Rish Relay V	Prog. 1PH & 3PH VOLT 100-600V L-L 1CO		2000
	ELR1	Rish ELR (Din)		ELR SINGLE CBCT 1CO+1CO
Rish ELR (Din)		ELR SINGLE CBCT 2CO	2450	
Rish ELR (Din)		ELR SINGLE CBCT 1CO	2400	
Rish ELR+(Din)		ELR+ Dual CBCT 1CO+1CO	3340	
Rish ELR VI(NE) (Din)		ELR VI(NE) CBCT+E to N V+I 1CO+1CO	3610	
Rish ELR VI (Din)		ELR VI CBCT+V+I 1CO+1CO	3650	
Rish ELR (96x96mm)		ELR SINGLE CBCT 1CO	2450	
Rish ELR (96x96mm)		ELR SINGLE CBCT 1CO+1CO	2450	
Rish ELR (96x96mm)		ELR SINGLE CBCT 2CO	2400	
Rish ELR+ (96x96mm)		ELR+ DUAL CBCT 1CO+1CO	3340	
Rish ELR VI (96x96mm)		ELR VI CBCT+V+I 1CO+1CO	3610	
Rish ELR VI (NE) (96x96mm)		ELR VI(NE) CBCT+E to N V+I 1CO+1CO	3650	
CB01		Rish CBCT	TW-E CBCT 73/30 (50) 30mA-30A 600:1	
CB02	Rish CBCT	TW-E CBCT 95/50 (40) 30mA-30A 600:1		1215
CB03	Rish CBCT	TW-E CBCT 135/85 (30) 30mA-30A 600:1		1380
CB04	Rish CBCT	TW-E CBCT 165/130 (30) 30mA-30A 600:1		1490
CB05	Rish CBCT	TW-E CBCT 260/200 (20) 30mA-30A 600:1		2160
Optional Accessory				
Extra charges for PRKAB 600 programming cable				1200



Static Relay

KMAT	Model	Description	Auxiliary Supply	LP (INR)	
AC Current Relay Input - 2 / 3 / 4 / 6 / 8 / 10A or 1A / 5A CT Operated					
LA21	252 - PAU	Single Phase Under Current	AC : 120 / 230 / 240 / 400 / 415V	990	
	252 - PAO	Single Phase Over Current		990	
LA31	253 - PAD	Single Phase Combined Under/Over Current		1950	
	253 - PAV	Three Phase Under Current		2360	
	253 - PAP	Three Phase Over Current		2360	
Optional Accessories					
Extra charges for DC Aux : 12 / 24 / 48 / 110V				100	
Extra charges for any non-standard settings other than Datasheet				100	
AC Voltage Relay With Adjustable Differential Input - 100 / 110 / 220 / 230 / 240 / 380 / 400 / 415 / 440V					
LK21	252 - PVU	Single Phase Under Voltage	Self Powered	1300	
	252 - PVO	Single Phase Over Voltage		1300	
LK31	253 - PVB	Single Phase Combined Under/Over Voltage.		1950	
LK21	252 - PVV	3 Phase 4 Wire Under Voltage		1300	
	252 - PVP	3 Phase 4 Wire Over Voltage		1300	
LK31	253 - PVE	3 Phase 4 Wire Combined Under/Over Voltage		1950	
LK21	252 - PVK	3 Phase 3 Wire Under Voltage		1300	
	252 - PVA	3 Phase 3 Wire Over Voltage		1300	
LK31	253 - PVM	3 Phase 3 Wire Combined Under/Over Voltage		1950	
Optional Accessories					
Extra charges for Aux supply / Time Delay				100	
AC Voltage Relay With Adjustable Time Delay Input - 100 / 110 / 220 / 230 / 240 / 380 / 400 / 415 / 440V					
LJ21	252 - PVZ	Single Phase Under Voltage	Self Powered	1300	
	252 - PVH	Single Phase Over Voltage		1300	
	252 - PVX	3 Phase 4 Wire Under Voltage		1300	
	252 - PVS	3 Phase 4 Wire Over Voltage		1300	
	252 - PVJ	3 Phase 3 Wire Under Voltage		1300	
	252 - PVC	3 Phase 3 Wire Over Voltage		1300	
Optional Accessory					
Extra charges for Aux supply				100	
Frequency Relay With Adjustable Time Delay Range - 40/60Hz 50/70Hz 360/440Hz Input - 100 / 110 / 220 / 230 / 240 / 380 / 400 / 415 / 440V					
LF21	252 - PHU	Under Frequency	Self Powered	1140	
	252 - PHO	Over Frequency		1140	
LF31	253 - PHD	Combined Under/Over Frequency		1950	
Optional Accessory					
Extra charges for Aux supply				100	
Combined Under / Over Voltage & Frequency Range - 40/60Hz 50/75Hz 360/440Hz Input - 120 / 240V					
LC61	256 - PHV	Single Phase Combined Under/Over Voltage and Frequency.	Self Powered	3940	
Phase Sequence & Phase Failure Input - 100 / 110 / 220 / 230 / 240 / 380 / 400 / 415 / 440V					
LP21	252 - PVR	3 Phase 3 Wire or 4 Wire	Self Powered	900	
Thermistor Trip Relay Range : Trip 2500-3500 Ohm Reset :1500 -2300 Ohm.					
LT21	252 - PMT	Automatic Reset	AC : 110 / 120 / 220 / 230 / 240V	1090	
	252 - PMM	Manual Reset		1090	
Synchro Check Relay (Paralleling) Input - 100 / 110 / 220 / 230 / 240 / 380 / 400 / 415 / 440V					
LS61	256 - PLL	1 Generator 1 Bus or 2 Generator Systems.	Self Powered	2110	
	256 - PLD	1 Generator with 'DEAD BUS' facility		2640	

KMAT	Model	Description	Auxiliary Supply	LP (INR)
Phase Balance Relay Input - 100 / 110 / 220 / 230 / 240 / 380 / 400 / 415 / 440V				
LB21	252 - PSF	Phase loss and Unbalance	Self Powered	1090
	252 - PSG	Phase loss Unbalance and Under Voltage.		1430
Reverse Power (Current) Relay Input - 100 / 110 / 220 / 230 / 240 / 380 / 400 / 415 / 440V Input - 123456810A				
LR61	256 - PAS	Single Phase or 3 Phase 4 Wire.	Self Powered	2280
	256 - PAT	3 Phase 3 Wire.		2320
	256 - PAQ	Single Phase or 3 Phase 4 Wire with test push button.		3860
	256 - PAR	3 Phase 3 Wire with test push button.		3860
DC Voltage Relay DC Voltage -18 to 20 or 20 to 32Vdc				
LD21	252 - PDU	DC Under Voltage with external time delay	Self Powered	1430
	252 - PDO	DC Over Voltage with external time delay		1550
	253 - PDE	DC Under Voltage with external external differential		1300
DC Milivolt Relay Input-50/60/75/100/150mV (Span- 10mV Min)				
LM21	252 - PBS	DC Milivolt Low Trip	AC : 120 / 240V	1790
	252 - PBT	DC Milivolt High Trip		1790
	Extra charges for DC Aux : 12 / 24 / 48 / 110V			100
Transducer Trip Relay Input - DC current - 1 / 5 / 10 / 20 / 4 - 20mA & DC voltage - 1 to 50V				
LX21	252 - PBA	Low Trip	AC : 120 / 240V	1590
	252 - PBB	High Trip		1590
LX31	253 - PBV	Combined High/Low		3170
Extra charges for DC Aux : 12 / 24 / 48 / 110V				100
Motor Protection Relay Input - 100 / 110 / 220 / 230 / 240 / 380 / 400 / 415 / 440V				
LL31	253 - MPR	Motor Protection Relay (Phase Loss Reversal Unbalanced)	AC : 110 / 220 / 230 / 240 / 380 / 415V	1710
Earth Fault Relay Input - 1A / 5A				
LE31	253 - EFR	Earth Fault Relay	AC : 230V	2060



Battery Charger

New

Order Code	Model No	Input Voltage	Output Voltage	Power Range	LP (INR)
BC03-1D00000000000	1P Elite 3612A	115 V AC/ 230V AC	12 V DC	36 W	2800
BC03-1F00000000000	1P Elite 7212A	115 V AC/ 230V AC	12 V DC	72 W	3050
BC03-1G00000000000	1P Elite 7224A	115 V AC/ 230V AC	24 V DC	72 W	3050
BC03-1A00000000000	1P Elite 12012A	115 V AC/ 230V AC	12 V DC	120 W	3150
BC03-1B00000000000	1P Elite 12024A	115 V AC/ 230V AC	24 V DC	120 W	3150
BC03-1E00000000000	1P Elite 12030A	115 V AC/ 230V AC	30 V DC	120 W	3150



Power Supply

Order Code	Model No	Input Voltage	Output Voltage	Output Current	Power Range	LP (INR)
RISH FLEX - E SERIES						
Single Phase - Plastic Housing						
RF14-1N00000000000	1P Flex - e 1515A	115 V AC/ 230V AC	15 V DC	1.0 A	15 W	1400
RF14-1M00000000000	1P Flex - e 1512A	115 V AC/ 230V AC	12 V DC	1.25 A	15 W	1400
RF14-1P00000000000	1P Flex - e 1524A	115 V AC/ 230V AC	24 V DC	0.63 A	15W	1400
RF14-1S00000000000	1P Flex - e 3012A	115 V AC/ 230V AC	12 V DC	3.0 A	30 W	1550
RF14-1K00000000000	1P Flex - e 3024A	115 V AC/ 230V AC	24 V DC	1.5 A	30 W	1550
RF14-1R00000000000	1P Flex - e 4512A	115 V AC/ 230V AC	12 V DC	3.75 A	45 W	1700
RF14-1L00000000000	1P Flex - e 4524A	115 V AC/ 230V AC	24 V DC	1.75 A	45 W	1700
RF14-1Q00000000000	1P Flex - e 6012A	115 V AC/ 230V AC	12 V DC	5.0A	60 W	1775
RF14-1A00000000000	1P Flex - e 6024A	115 V AC/ 230V AC	24 V DC	2.5 A	60 W	1775
Single Phase - Metal Housing						
RF14-1B00000000000	Rish Flex - e 9024A	115 V AC/ 230V AC	24 V DC	5 A	95 to 120 W	2320
RF14-1C00000000000	Rish Flex - e 17024A	115 V AC/ 230V AC	24 V DC	7.5 A	95 to 180 W	2450
Two Phase - Metal Housing						
RF14-2I00000000000	Rish Flex - e 9024B	230V AC / 400V AC	24 V DC	5 A	120 to 180 W	3250
RF14-2J00000000000	Rish Flex - e 17024B	230V AC / 400V AC	24 V DC	7.5 A	120 to 180 W	3400
RISH FLEX SERIES						
Single Phase - Metal Housing						
RF13-1T00000000000	Rish Flex 6005A	115 V AC/ 230V AC	5 V DC	5 A	35 W	2150
RF13-1S00000000000	Rish Flex 6012A	115 V AC/ 230V AC	12 V DC	6 A	72 W	2150
RF13-1A00000000000	Rish Flex 6024A	115 V AC/ 230V AC	24 V DC	3 A	72 W	2150
RF13-1B00000000000	Rish Flex 9024A	115 V AC/ 230V AC	24 V DC	5 A	120 W	3350
RF13-1R00000000000	Rish Flex 17012A	115 V AC/ 230V AC	12 V DC	14 A	180 W	3450
RF13-1C00000000000	Rish Flex 17024A	115 V AC/ 230V AC	24 V DC	7.5 A	180 W	3450
RF13-1F00000000000	Rish Flex 17048A	115 V AC/ 230V AC	48 V DC	3.75 A	180 W	4000
RF13-1P00000000000	Rish Flex 28012A	115 V AC/ 230V AC	12 V DC	20 A	240 W	6500
RF13-1D00000000000	Rish Flex 28024A	115 V AC/ 230V AC	24 V DC	14 A	336 W	6500
RF13-1G00000000000	Rish Flex 28048A	115 V AC/ 230V AC	48 V DC	7 A	336 W	6500
RF13-1E00000000000	Rish Flex 50024A	115 V AC/ 230V AC	24 V DC	25 A	600 W	8000
RF13-1H00000000000	Rish Flex 50048A	115 V AC/ 230V AC	48 V DC	12 A	600 W	8000

Order Code	Model No	Input Voltage	Output Voltage	Output Current	Power Range	LP (INR)
Two Phase - Metal Housing						
RF13-2I00000000000	Rish Flex 9024B	230V/ 400V/ 500 V AC	24 V DC	5 A	120 W	4100
RF13-2J00000000000	Rish Flex 17024B	230V/ 400V/ 500 V AC	24 V DC	7.5 A	180 W	4200
RF13-2K00000000000	Rish Flex 28024B	230V/ 400V/ 500 V AC	24 V DC	14 A	336 W	7000
Three Phase - Metal Housing						
RF13-3L00000000000	Rish Flex 50024B	400 – 500 V AC	24 V DC	25 A	600 W	8900
RF13-3M00000000000	Rish PST 2430B	400 – 480 V AC	24 V DC	30 A	720 W	19040
RF13-3N00000000000	Rish PST 2440B	400 – 480 V AC	24 V DC	40 A	960 W	22900
Redundancy Module						
RF13-00M00000000000	Rish MR220	10 – 60 V DC	10 – 60 V DC	0 – 25 A (max)	----	1950



Terms and conditions

- This issue of Price List supersedes all previous Price Lists
- All Prices are in INR
- The prices are subject to change without prior notice
- List Prices mentioned are exclusive of all taxes & duties
- Prices charged will be as prevailing on the date of dispatch
- Minimum order value criterion should be observed while ordering
- The company reserves the right to supply goods at its discretion
- For any non-standard requirement, please contact nearest sales office

Warranty

- All the products listed in the Price List carry a warranty of 18 months against manufacturing defects (unless otherwise specified) from the date of purchase or 12 months from the date of commissioning, whichever is earlier

Note

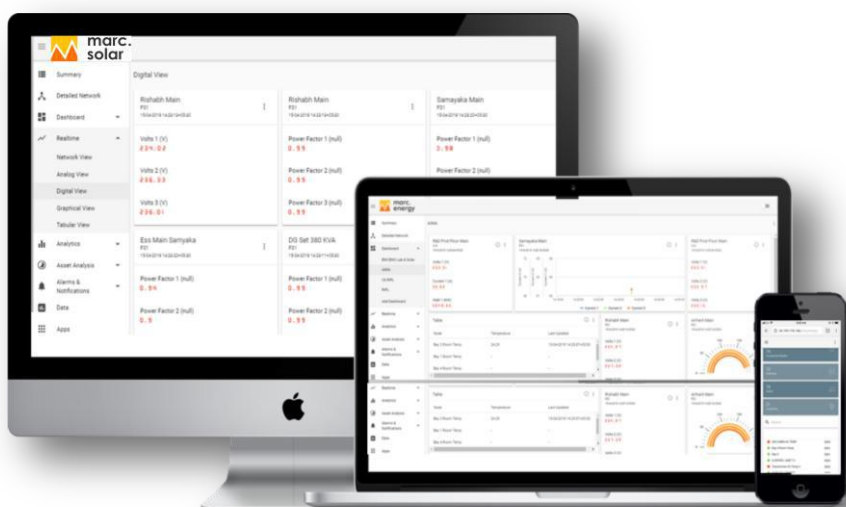
- To facilitate the ordering kindly make use of product configurator
- For Energy Management Solutions (EMS) enquiries, please contact nearest sales office
- Kindly refer respective datasheets for detailed technical specifications. Technical specs given in this price list are in abbreviated form only for easy understanding
- Since the product approbations mentioned in the price list are on generic header level, kindly contact to our nearest sales office for productwise approbations



State of the art NABL accredited EMI - EMC Test Laboratory

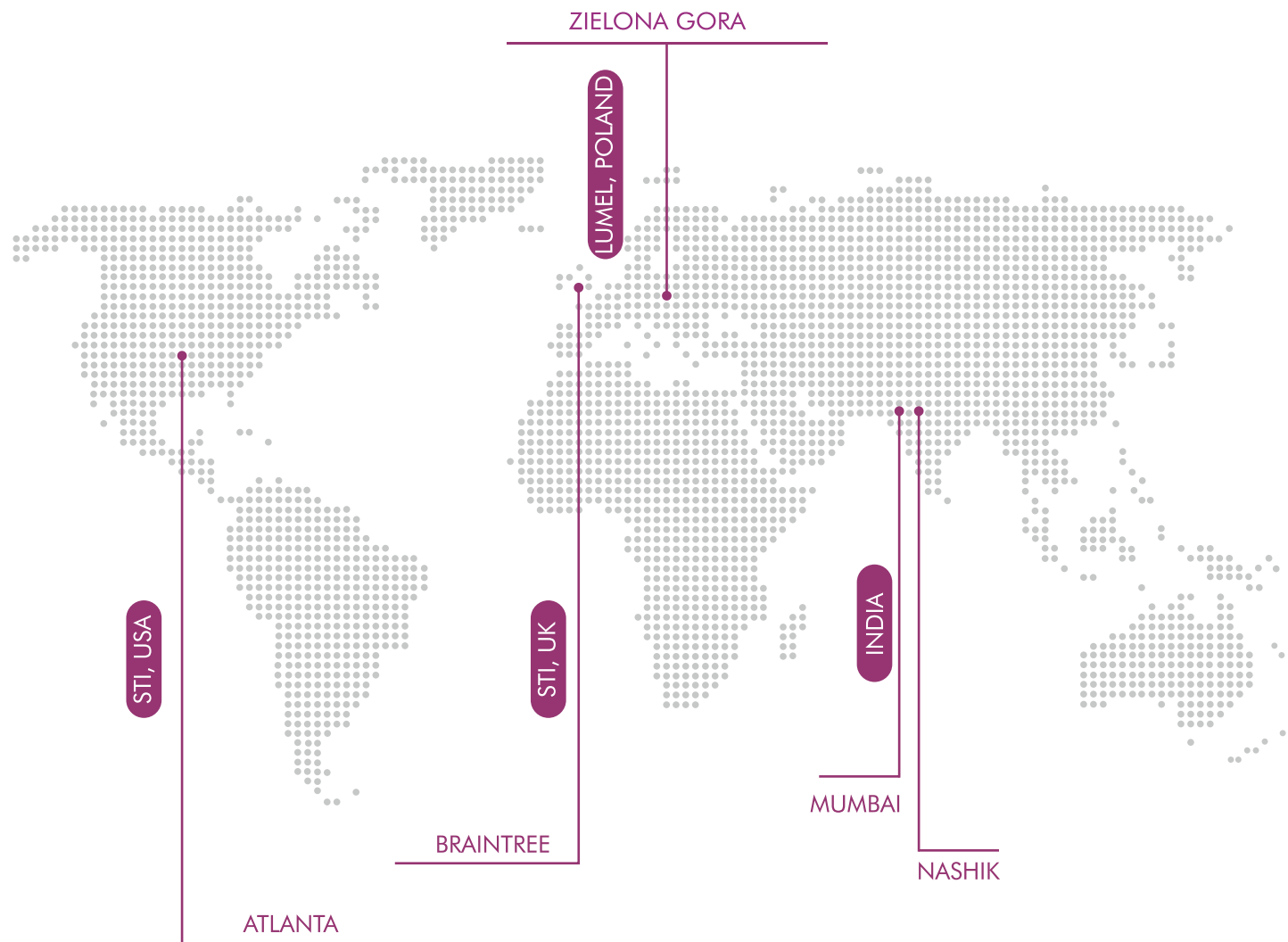


Introducing next generation solar inverters now made in India



GSM based smart remote monitoring solution

Global Network



Product upgradation is a continuous process. Hence, data in this price list is subject to change without prior notice. For the latest information, please get in touch with our sales offices.



Measure



Control



Record



Analyze

RISHABH INSTRUMENTS PVT. LTD.

Trishala Unit, C-6, NICE Area, MIDC, Satpur, Nashik - 422007, India.

Tel: +91 253 2202028 / 099 | Fax: +91 253 2351064 | E-mail: marketing@rishabh.co.in | www.rishabh.co.in