

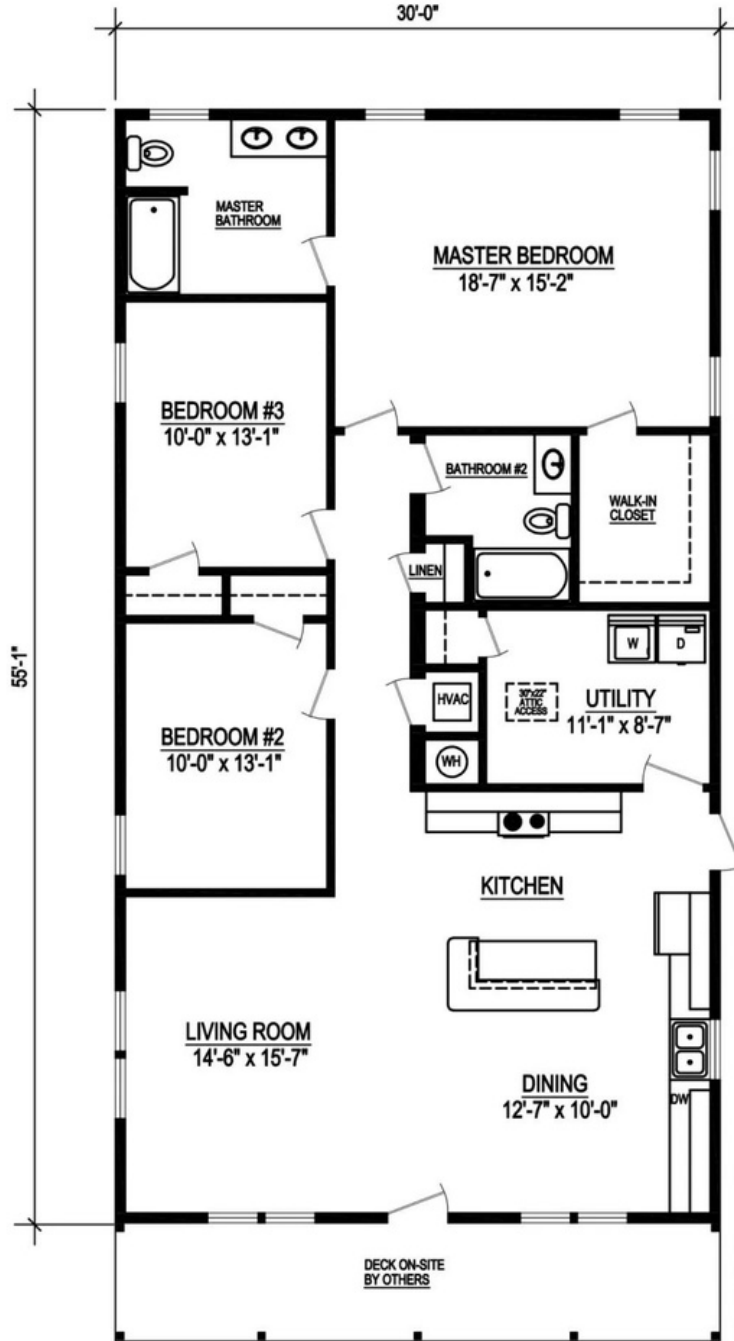


Acadian Craftsman

The most common characteristic of a Craftsman style house includes a covered front porch. Affinity's Acadian Craftsman has that and more. Open and spacious, this single-story home would fit in an older established neighborhood or as a standalone home on a private street. The home is a large 1650 SF with 3 bedrooms and 2 baths. The large utility room includes a storage closet and room for a freezer. The bedroom sizes are very large especially the master bedroom with a great walk in closet. Your builder can add a garage or carport on the side for easy entrance directly into the kitchen.

The square footage and other dimensions on our floor plans are approximate. Renderings are not intended to be an accurate representation of the home and are often shown with optional features and/or third-party additions that can be added at additional cost if available in your region or situation.





ACADIAN

1650 Sq. Ft. Heated/Cooled
1650 Sq. Ft. Under Roof





Acadian Craftsman

Specifications:

3 Bedroom / 2 Bathroom
1650 Sq. Ft. Heated/Cooled
1650 Sq. Ft. Under Roof

