

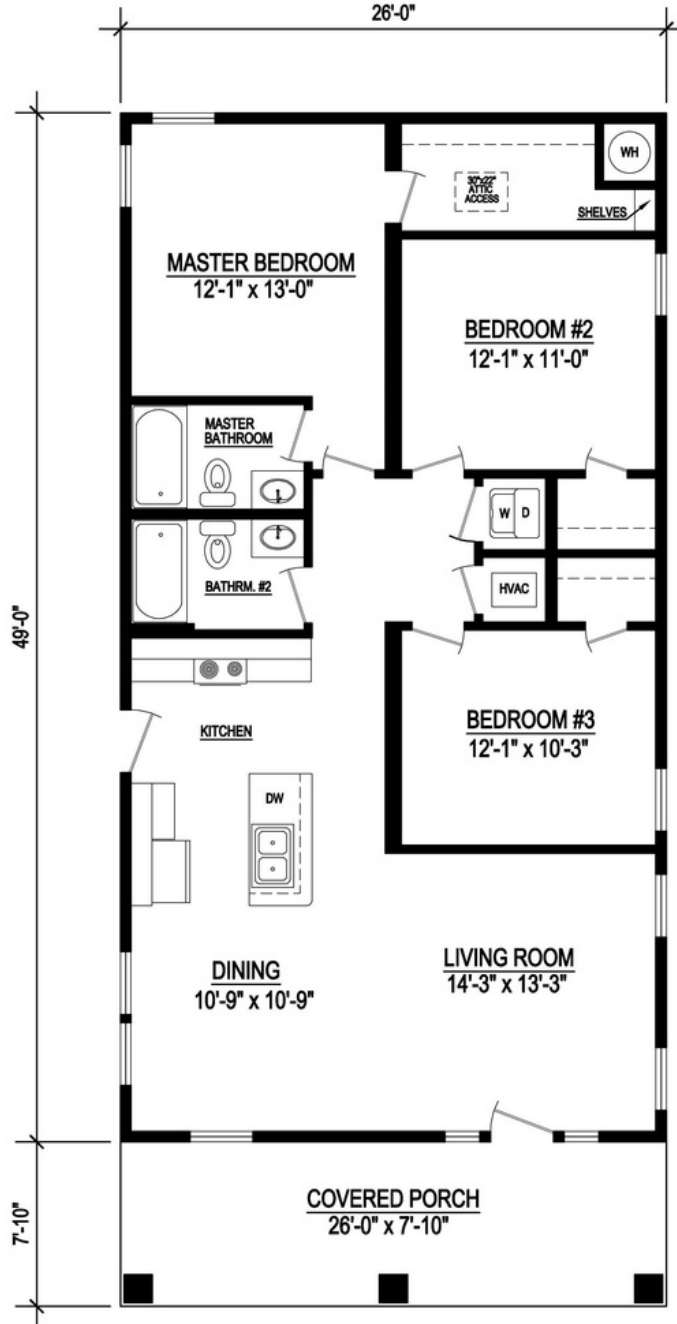


Whitney Lake

The Whitney Lake floor plan provides 1,274 square feet of heated/cooled space, with a total of 1,478 square feet of under roof space.

The square footage and other dimensions on our floor plans are approximate. Renderings are not intended to be an accurate representation of the home and are often shown with optional features and/or third-party additions that can be added at additional cost if available in your region or situation.





WHITNEY LAKE

1274 Sq. Ft. Heated/Cooled
1478 Sq. Ft. Under Roof



229-482-1200

AFFINITYMODULAR.COM



62 MURRAY BLVD LAKELAND, GA 31635



Whitney Lake Specifications:

3 Bedroom / 2 Bathroom
1274 Sq. Ft. Heated/Cooled
1478 Sq. Ft. Under Roof

