

PRODUCT DATA SHEET

# BAYO.S GROUND SCREW

## HEX TOP M16 76X3,6

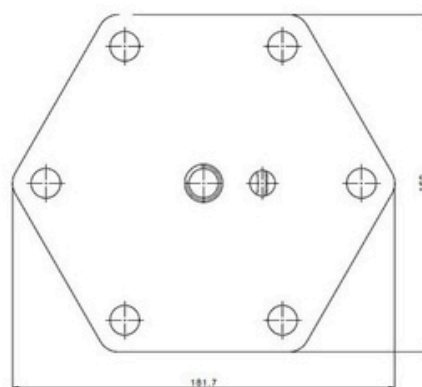
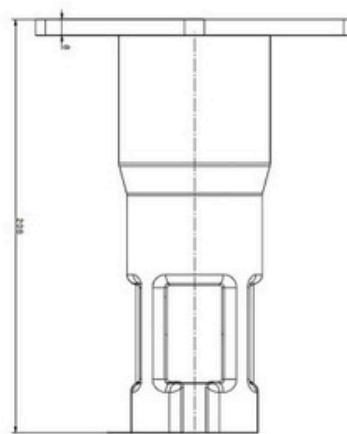
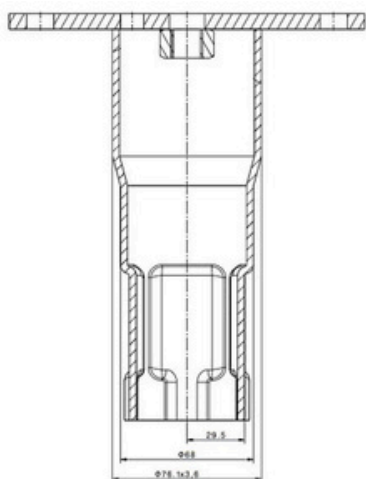
C

No. 55301

TOP



Weight:	3,38 kg (+ 3% - 8% tolerance)
Use:	Foundation for larger construction projects
Installation:	Installation by BAYO.S with M2 drilling rig
Compatible with:	Can be combined with Screw Tip (Series A) and Extension (Series B)
Material:	Steel S235, Galvanized after DIN EN ISO 1461



## PRODUCT DATA SHEET

# BAYO.S GROUND SCREW ROUND TOP M16 76X3,6

**C**

No. 55303

TOP



Weight:	2,92 kg (+ 3% - 8% tolerance)
Use:	Foundation for lager construction projects
Installation:	Installation by BAYO.S with M2 drilling rig
Compatible with:	Can be combined with Screw Tip (Series A) and Extension (Series B)
Material:	Steel S235, Galvanized after DIN EN ISO 1461

