

PRODUCT DATA SHEET

BAYO.S GROUND SCREW PRM HEX TOP M16 89X5

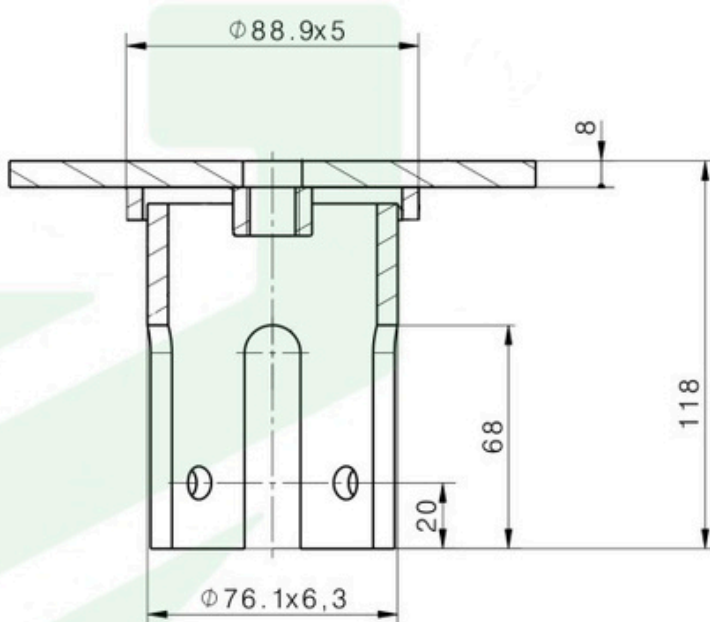
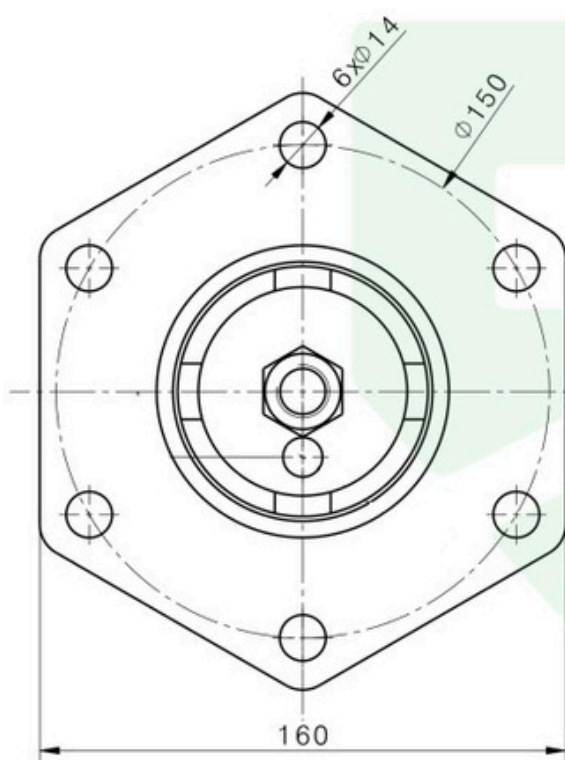
C

No. 58301

TOP



Weight:	2,4 kg (+ 3% - 8% tolerance)
Use:	Foundation for lager construction projects
Installation:	Installation by BAYO.S with M2 drilling rig
Compatible with:	Can be combined with Screw Tip (Series A) and Extension (Series B)
Material:	Steel S235, Galvanized after DIN EN ISO 1461



PRODUCT DATA SHEET

BAYO.S GROUND SCREW PRM ROUND TOP M16 89X5

C

No. 58302

TOP



Weight:	2,67 kg (+ 3% - 8% tolerance)
Use:	Foundation for lager construction projects
Installation:	Installation by BAYO.S with M2 drilling rig
Compatible with:	Can be combined with Screw Tip (Series A) and Extension (Series B)
Material:	Steel S235, Galvanized after DIN EN ISO 1461

