

~ Friday, May 31 ~

4-H/FFA BEEF SHOW

May 31, 2019
5:00 PM CST

4-H - FFA Beef Show
Premium: Danish System - \$500

- 1. Junior Heifer Calf - calved after January 1, 2019
- 2. Senior Heifer Calf - calved between Sept. 1, 2018 - December 31, 2018
- 3. Summer Yearling - calved between May 1, 2018 - August 31, 2018
- 4. Jr Yearling Heifer - calved between January 1, 2018 - April 30, 2018
- 5. Senior Yearling Heifer - calved between Sept. 1, 2017 - Dec. 31, 2017
- 6. Champion Female
- 7. Reserve Champion Female
- 8. 4-H Champion Female
- 9. FFA Champion Female

Open Beef Show

Breeds: Angus, Charolais, Hereford, Other Breeds
A breed must have 8 head to qualify for a division
Premium: 25-20-15-10, Breed Champion 50, Reserve 25
Supreme Female and Bull, 250

- 1. Junior Heifer Calf - calved after January 1, 2019
- 2. Late Senior Calf - calved between Nov. 1, 2018 - December 31, 2018
- 3. Early Senior Calf - calved between Sept. 1, 2018 - October 31, 2018
- 4. Late Summer Yearling - calved between July 1, 2018 - August 31, 2018
- 5. Early Summer Yearling - calved between May 1, 2018 - June 30, 2018

- 6: Late Junior Yearling - calved between March 1, 2018 - April 30, 2018
- 7: Junior Yearling - calved between January 1, 2018 - February 28, 2018
- 8: Late Senior Yearling - calved between Sept. 1, 2017 - Dec. 31, 2017
- 9: Cow and Calf
- 10: Champion Female
- 11: Reserve Champion Female
- 12: Russell County Farm Bureau Federation Supreme Champion Female
- 13: Junior Bull Calf - calved after January 1, 2019
- 14: Late Senior Calf - calved between Nov. 1, 2018 - December 31, 2018
- 15: Early Senior Calf - calved between Sept. 1, 2018 - October 31, 2018
- 16: Late Summer Yearling - calved between July 1, 2018 - August 31, 2018
- 17: Early Summer Yearling - calved between May 1, 2018 - June 30, 2018
- 18: Late Junior Yearling - calved between March 1, 2018 - April 30, 2018
- 19: Junior Yearling - calved between January 1, 2018 - February 28, 2018
- 20: Late Senior Yearling - calved between Sept. 1, 2017 - Dec. 31, 2017
- 21: Two Year Old Bull - calved between January 1, 2017 - August 31, 2017
- 22: Champion Bull
- 23: Reserve Champion Bull
- 24: Russell County Farm Bureau Supreme Champion Bull

****For More Information Contact Jonathan Gosser (270) 507-9714****

Congratulations Russell Co. Jaycees

Compliments of

TIM POPPLEWELL

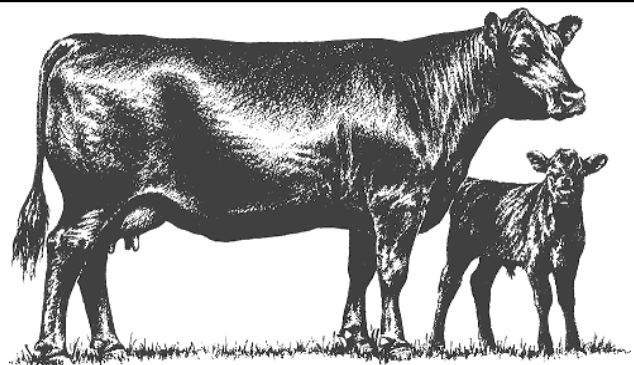
Russell County PVA & Staff

Compliments of

B&J

Gosser Farm

Jonathan Gosser
1915 Hwy. 3525
Russell Springs, KY 42642
270-566-1127



CJR² Farms

Beef Cattle & Hay
Russell Springs, KY
(270) 566-2590