



# TriStar® VS 950

Variable-Speed Pump

**SIMPLE INSTALLATION WITH QUIETER-THAN-EVER PERFORMANCE**

**No-rib strainer basket with see-through cover** ensures easy debris removal

**Upgraded motor drive** delivers 30% quieter high-speed operation than other models

**Advanced hydraulic design** provides ample power to replace most high-performance pumps up to 3 HP



**EXPERT LINE™**  
ONLY FROM POOL PROS



**Wall-mountable touchpad control** can be rotated in four directions

**Side and rear conduit entry** accommodate both high and low voltage connections for simple installation

**Permanent magnet, totally enclosed fan-cooled motor** offers more efficient operation and long-lasting reliability



### INDUSTRY-LEADING ENERGY EFFICIENCY

As a member of the TriStar® VS family—the most energy-efficient pumps in their class—TriStar VS 950 saves pool owners up to \$1,500 per year. Its ENERGY STAR rating means local energy rebates may apply, too.



### DESIGNED FOR DURABILITY

Built with a chemical-resistant Viton® seal and accompanied by a 3-year extended warranty, TriStar VS 950 offers powerful corrosion protection for years of reliable performance.



### SEAMLESS RETROFITTING

With dual-voltage capabilities, two pump base options and 2" x 2 1/2" CPVC union connections, TriStar VS 950 is easy to install in both new and existing pool pads and doesn't require costly rewiring.

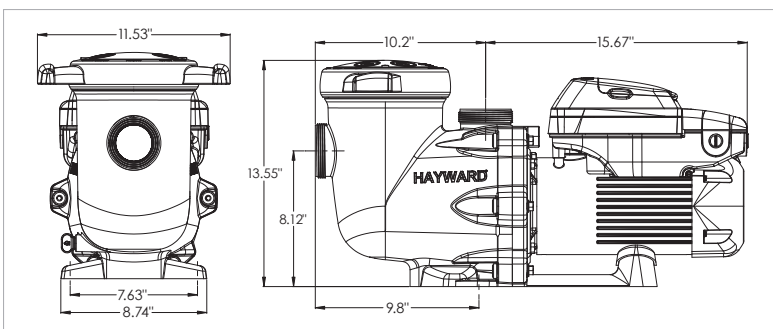


### SPECIFICATIONS

MODEL NUMBER	TOTAL HP	VOLTAGE	WEIGHTED ENERGY FACTOR (WEF)*	UNION CONNECTIONS	WARRANTY
SP32950VSP	2.7	115V/230V	10.1/7.3	2" x 2.5"	3 years**

\*The higher the weighted energy factor (WEF), the more efficient the pump. Visit [hayward.com/regulations](http://hayward.com/regulations) for more information.

### TRISTAR VS 950 DIMENSIONS (INCHES)



TriStar VS 950 pumps are listed by:

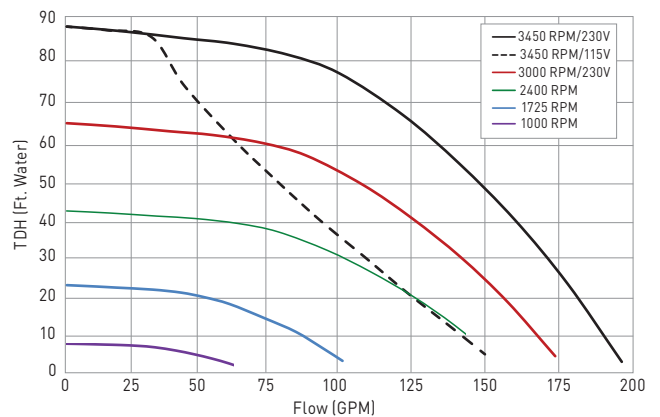
\*\*When sold by a Totally Hayward® partner. Exclusions, other terms and conditions may apply — visit [hayward.com/expert](http://hayward.com/expert) for details.

» [hayward.com](http://hayward.com) » 1-888-HAYWARD | Pumps » Filters » Heating » Cleaners » Sanitization » Automation » Lighting » Water Features » White Goods

Hayward, Hayward & Design, the H logo, Totally Hayward and TriStar are registered trademarks and Expert Line is a trademark of Hayward Industries, Inc. ENERGY STAR is a registered mark owned by the U.S. government. All other trademarks not owned by Hayward are the property of their respective owners. Hayward is not in any way affiliated with or endorsed by those third parties. © 2020 Hayward Industries, Inc.

eLITTSVS95020

### TRISTAR VS 950 PERFORMANCE COMPARISON





# TriStar® VS 900

»»» Variable-Speed Pump

## INDUSTRY-LEADING ENERGY EFFICIENCY IN A PREMIUM PUMP

**No-rib strainer basket with see-through cover** ensures easy debris removal

**Permanent magnet, totally enclosed fan-cooled motor** offers more efficient operation and long-lasting reliability

**Advanced hydraulic design** provides ample power to replace most high-performance pumps up to 1.5 full-rate or 2.0 max-rate HP



**Wall-mountable touchpad control** can be rotated in four directions

**Side and rear conduit entry** accommodate both high and low voltage connections for simple installation

**Upgraded dual-voltage motor drive** delivers 30% quieter high-speed operation than other models



**EXPERT LINE**  
ONLY FROM POOL PROS



**INDUSTRY-LEADING ENERGY EFFICIENCY**  
As part of the TriStar family of pumps—the most energy-efficient pumps in their class—TriStar VS 900 saves pool owners up to \$1,500 per year. Its ENERGY STAR rating means local energy rebates may apply, too.

**DESIGNED FOR DURABILITY**  
Built with a chemical-resistant Viton® seal and accompanied by a 3-year extended warranty, TriStar VS 900 offers powerful corrosion protection for years of reliable performance.

**SEAMLESS RETROFITTING**  
With easy top-mount wiring, two pump base options and 2" x 2½" CPVC union connections, TriStar VS 900 is easy to install in both new and existing pool pads.

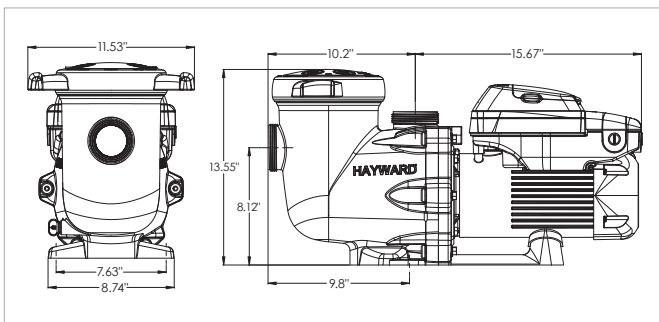


### SPECIFICATIONS

MODEL NUMBER	TOTAL HP	VOLTAGE	WEIGHTED ENERGY FACTOR (WEF)*	UNION CONNECTIONS	WARRANTY
SP32900VSP	1.85	115/230V	12.9/8.3	2" x 2.5"	3 years**

\*The higher the weighted energy factor (WEF), the more efficient the pump. Visit [hayward.com/regulations](http://hayward.com/regulations) for more information.

### TRISTAR VS 900 DIMENSIONS (INCHES)

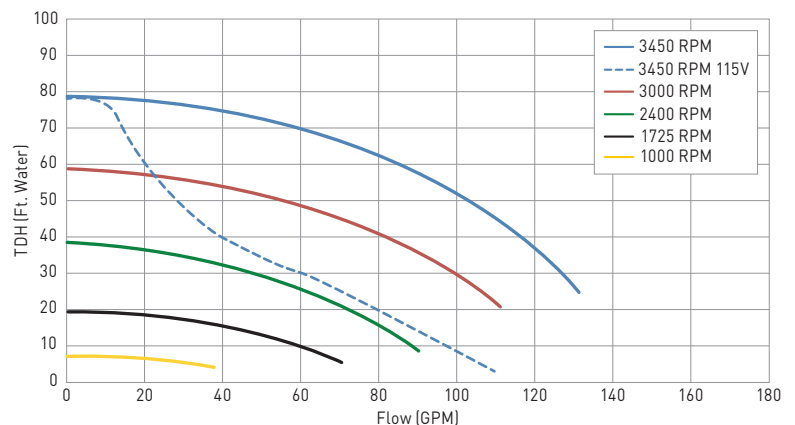


TriStar VS 900 pumps are listed by:



\*\*When sold by a Totally Hayward® partner. Exclusions, other terms and conditions may apply — visit [hayward.com/expert](http://hayward.com/expert) for details.

### TRISTAR VS 900 PERFORMANCE COMPARISON



» [hayward.com](http://hayward.com) » 1-888-HAYWARD | Pumps » Filters » Heating » Cleaners » Sanitization » Automation » Lighting » Water Features » White Goods

Hayward, Hayward & Design, the H logo, Totally Hayward and TriStar are registered trademarks of Hayward Industries, Inc. ENERGY STAR is a registered mark owned by the U.S. government. All other trademarks not owned by Hayward are the property of their respective owners. Hayward is not in any way affiliated with or endorsed by those third parties. © 2020 Hayward Industries, Inc. eLITTSVS90020

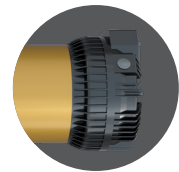
**SUPER EFFICIENT PERFORMANCE,  
SUPER AFFORDABLE PRICE**

### EXCEPTIONAL ENERGY EFFICIENCY WITH A LOW PURCHASE PRICE.

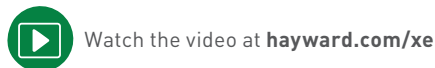
Hayward Super Pump sets the industry standard for excellence and value—and new Super Pump XE is no exception. Offering energy efficiency that outperforms Dept. of Energy standards while cutting pump equipment costs by almost a third, Super Pump XE is the just-right pump for just about any pool. With its easy installation, dual-voltage capability and durable design that's up to 30% lighter weight than competitive VS models, it's the most versatile option for unmatched value.

#### KEY FEATURES

- » **Industry-leading efficiency** exceeds DOE benchmarks and efficiency of many competitive VS pumps
- » **Easily programmable** with up to 6 selectable speeds
- » **Dual-voltage capability** (230V/115V) offers more versatility for installation
- » **Chemical-resistant Viton<sup>®</sup> seal** offers improved resistance against chemical imbalances
- » **Simple installation** with up to 2" shorter length than single-speed models and no additional equipment requirements



**Simple button programming**  
easily switches between speeds



**EXPERT LINE<sup>™</sup>**  
ONLY FROM POOL PROS



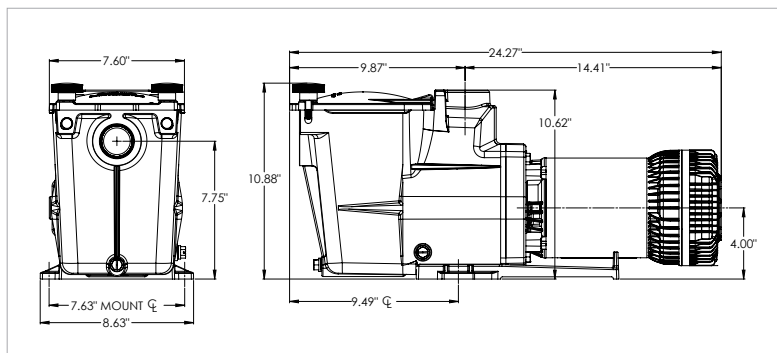
#### SPECIFICATIONS

MODEL NUMBER	TOTAL HP	SPEED RANGE	VOLTAGE	WEIGHTED ENERGY FACTOR (WEF)*	WARRANTY
SP2610X15XE	1.65	40-100%	230/115V	8.3/8.3	3 years**
SP2615X20XE	2.25	40-100%	230/115V	8.0/7.9	3 years**

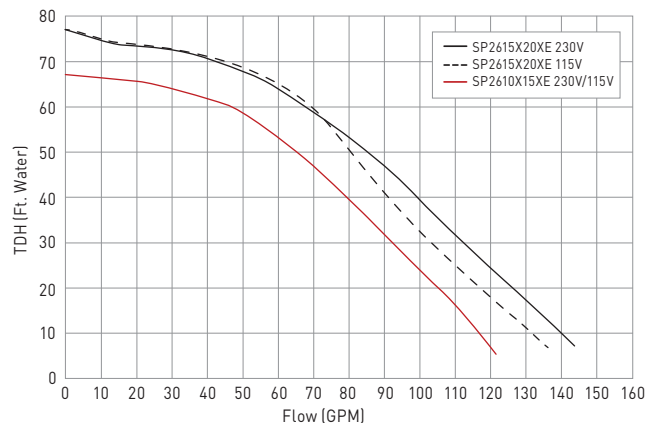
\*The higher the weighted energy factor (WEF), the more efficient the pump. Visit [hayward.com/regulations](http://hayward.com/regulations) for more information.



\*\*When sold by a Totally Hayward<sup>®</sup> Partner. Exclusions, other terms and conditions may apply—visit [hayward.com/expert](http://hayward.com/expert) for details.

#### SUPER PUMP XE DIMENSIONS (INCHES)



#### SUPER PUMP XE MAX SPEED PERFORMANCE COMPARISON



Super Pump XE pumps are listed by:  

» [hayward.com](http://hayward.com) » 1-888-HAYWARD | Pumps » Filters » Heaters » Sanitization » Automation » Lighting » Water Features » Cleaners » Safety

Hayward, Hayward & Design, the H logo, Expert Line, Super Pump and Totally Hayward are registered trademarks and We Build Better. is a trademark of Hayward Industries, Inc. ENERGY STAR is a registered mark owned by the U.S. government. All other trademarks not owned by Hayward are the property of their respective owners. Hayward is not in any way affiliated with or endorsed by those third parties. © 2021 Hayward Industries, Inc.



# Super Pump® 700

»»» Medium-Head Pump Series

THE INDUSTRY'S FAVORITE POOL PUMP,  
NOW WITH AN ADVANCED TEFC MOTOR

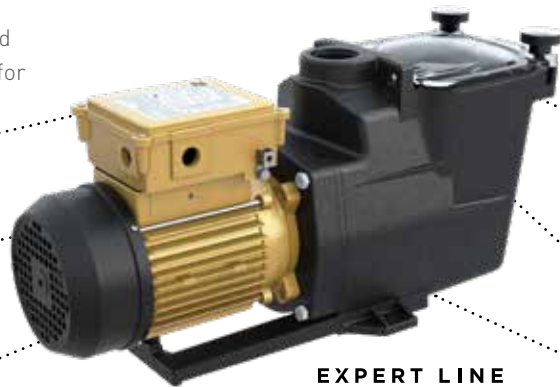
## LONG-LASTING PERFORMANCE FOR POOLS OF ALL SIZES.

Hayward® Super Pump® already sets the industry standard for excellence and value, and the new Super Pump 700 is upgraded with an exclusive totally enclosed fan-cooled (TEFC) motor for added reliability. The TEFC motor also provides a top-mount wiring compartment that makes installation faster and easier than ever. Complete with a chemical-resistant Viton® seal backed by a 2-year warranty, Super Pump 700 resists corrosion to stay in top condition season after season. It's everything you love about Super Pump, now with unparalleled performance.

**Top-mount wiring compartment** and updated motor design provide up to 5" of extra space for hassle-free installation in small pool pads

**Totally enclosed fan-cooled (TEFC) motor** ensures long-lasting performance and uniform heat dissipation

**Chemical-resistant Viton seal** offers powerful corrosion protection



**EXPERT LINE**  
ONLY FROM POOL PROS

**See-through strainer cover** is easy to remove and lets you see when the basket needs cleaning

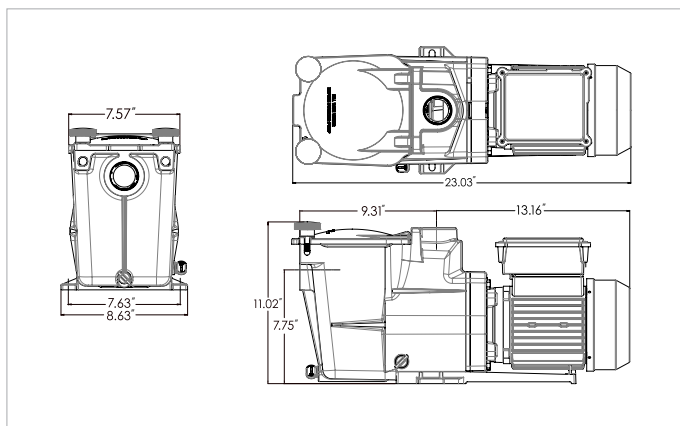
**Extra-large debris basket** provides added leaf-holding capacity for less frequent maintenance

**Wing nut drain plug** is easy to open and close for winterizing

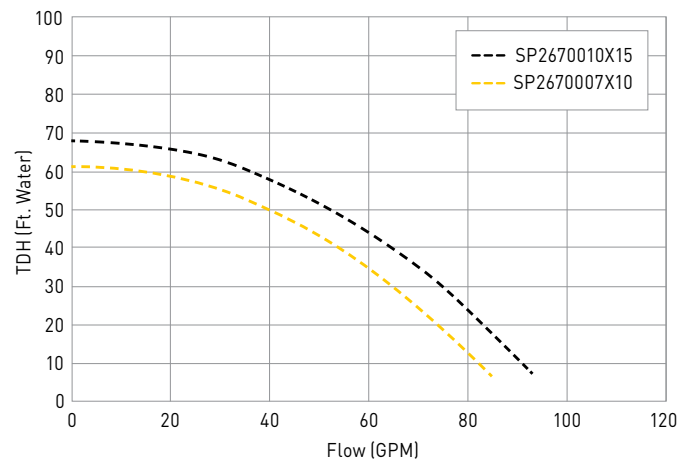
### SPECIFICATIONS

MODEL NUMBER	HORSEPOWER		SERVICE FACTOR	PORT SIZE	WARRANTY
	TOTAL HP	RATED HP			
SP2670007X10	1.10	1	1.10	1½ in	2 years
SP2670010X15	1.50	1.50	1.00	1½ in	2 years

### SUPER PUMP 700 DIMENSIONS (INCHES)



### SUPER PUMP 700 FLOW VS. TOTAL HEAD



**IMPORTANT NOTE:** Pumps and replacement motors that are single speed and one (1) TOTAL HP or greater cannot be sold, offered for sale, or installed in a residential pool for filtration use in California, Title 20 CCR sections 1601-1609.

Super Pump 700 pumps are listed by:

» hayward.com » 1-888-HAYWARD | Pumps » Filters » Heating » Cleaners » Sanitization » Automation » Lighting » Water Features » White Goods

Hayward, Hayward & Design, the H logo and Super Pump are registered trademarks of Hayward Industries, Inc. All other trademarks not owned by Hayward are the property of their respective owners. Hayward is not in any way affiliated with or endorsed by those third parties. © 2019 Hayward Industries, Inc.

DLITSP70019

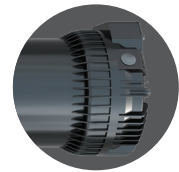


## THE ENERGY EFFICIENCY YOU NEED, THE VALUE YOU WANT.

For pool owners looking for impressive energy savings in a pump that costs a lot less, MaxFlo XE ultra-high efficiency pumps are a great find. Selectable speed options create powerful cost savings without a lot of hassle. With its easy installation, dual-voltage capability and durable design that's up to 30% lighter weight than competitive VS models, MaxFlo XE is the best way to install an affordable pump that complies with Dept. of Energy regulations in any new or existing pool.

### KEY FEATURES

- » **Industry-leading efficiency** exceeds DOE benchmarks and efficiency of many competitive VS pumps
- » **Easily programmable** with up to 6 selectable speeds
- » **Dual-voltage capability** (230V/115V) offers more versatility for installation
- » **Chemical-resistant Viton<sup>®</sup> seal** offers improved resistance against chemical imbalances
- » **Simple installation** with up to 2" shorter length than single-speed models, standard 1.5" x 2" unions and no additional equipment requirements



**Simple button programming**  
easily switches between speeds



Watch the video at [hayward.com/xe](http://hayward.com/xe)

**EXPERT LINE<sup>™</sup>**  
ONLY FROM POOL PROS



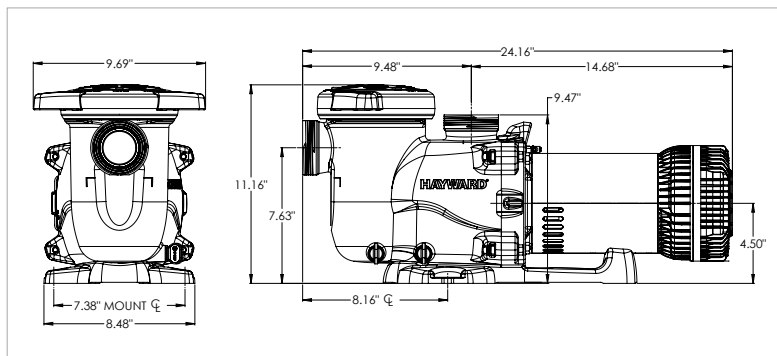
### SPECIFICATIONS

MODEL NUMBER	TOTAL HP	SPEED RANGE	VOLTAGE	WEIGHTED ENERGY FACTOR (WEF)*	WARRANTY
SP2310X15XE	1.65	40-100%	230/115V	9.7/9.7	3 years**
SP2315X20XE	2.25	40-100%	230/115V	8.4/8.7	3 years**

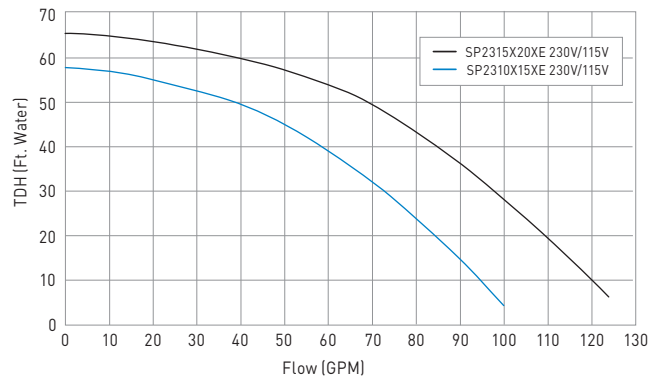
\*The higher the weighted energy factor (WEF), the more efficient the pump. Visit [hayward.com/regulations](http://hayward.com/regulations) for more information.



\*\*When sold by a Totally Hayward<sup>®</sup> Partner. Exclusions, other terms and conditions may apply—visit [hayward.com/expert](http://hayward.com/expert) for details.

### MAXFLO XE DIMENSIONS (INCHES)



### MAXFLO XE MAX SPEED PERFORMANCE COMPARISON



MaxFlo XE pumps are listed by:  

» [hayward.com](http://hayward.com) » 1-888-HAYWARD | Pumps » Filters » Heaters » Sanitization » Automation » Lighting » Water Features » Cleaners » Safety

Hayward, Hayward & Design, the H logo, Expert Line, MaxFlo and Totally Hayward are registered trademarks and We Build Better. is a trademark of Hayward Industries, Inc. ENERGY STAR is a registered mark owned by the U.S. government. All other trademarks not owned by Hayward are the property of their respective owners. Hayward is not in any way affiliated with or endorsed by those third parties. © 2021 Hayward Industries, Inc.

eLITMFxE21



# MaxFlo VS™ 500

»»» Variable-Speed Pump

**DURABLE DESIGN,  
SUPERIOR SAVINGS**

**Intuitive control pad** can be rotated in four directions on the pump or removed and wall mounted



**Upgraded dual-voltage motor drive** maintains optimal operating efficiency



**EXPERT LINE**  
ONLY FROM POOL PROS

**See-through strainer cover** lets you see when the basket needs cleaning

**1 1/2" x 2" union connections** allow for seamless installation in any application

**Advanced hydraulic design** offers increased efficiency and incredibly quiet operation, especially at lower speeds



**UNRIVALED RELIABILITY**  
A chemical-resistant Viton® seal and a 3-year warranty mean MaxFlo VS™ 500 will provide years of powerful performance.

**ENERGY-EFFICIENT DESIGN**  
With a super-efficient permanent magnet, totally enclosed fan-cooled motor, MaxFlo VS 500 provides up to 80% energy savings over single-speed pumps and pays for itself faster than larger, more expensive models. Its ENERGY STAR® rating means local energy rebates may apply, too.

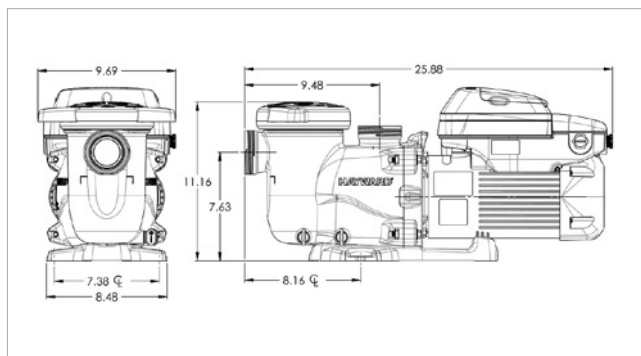
**UNIVERSAL COMPATIBILITY**  
Built with dual-voltage capability, MaxFlo VS 500 is an easy, drop-in upgrade that can operate in standalone mode or connect to any automation system, either directly or with relays.

SAVE UP TO  
**80%**  
ON ENERGY COSTS\*

## SPECIFICATIONS

MODEL NUMBER	STAND ALONE	RELAY CONTROL	HAYWARD® AUTOMATION	UNION CONNECTIONS	TOTAL HP	VOLTAGE	WARRANTY
SP23520VSP	•	•	•	1.5" x 2"	1.65	230/115V	3 years

## MAXFLO VS 500 DIMENSIONS (INCHES)



\*Compared to single-speed pumps.

MaxFlo VS 500 pumps are listed by:

## MAXFLO VS 500 PERFORMANCE COMPARISON

