

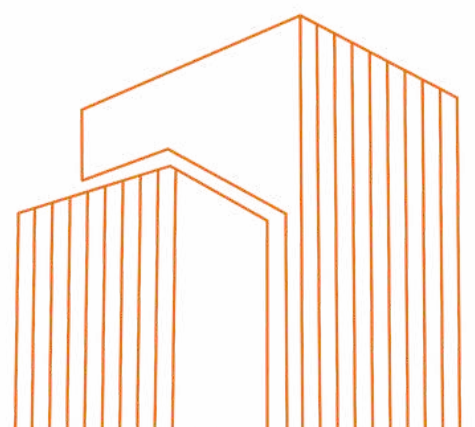


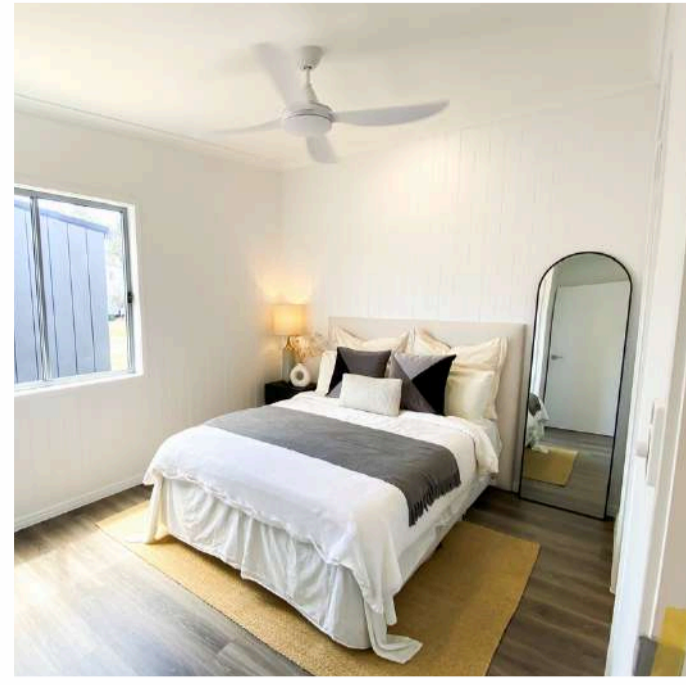
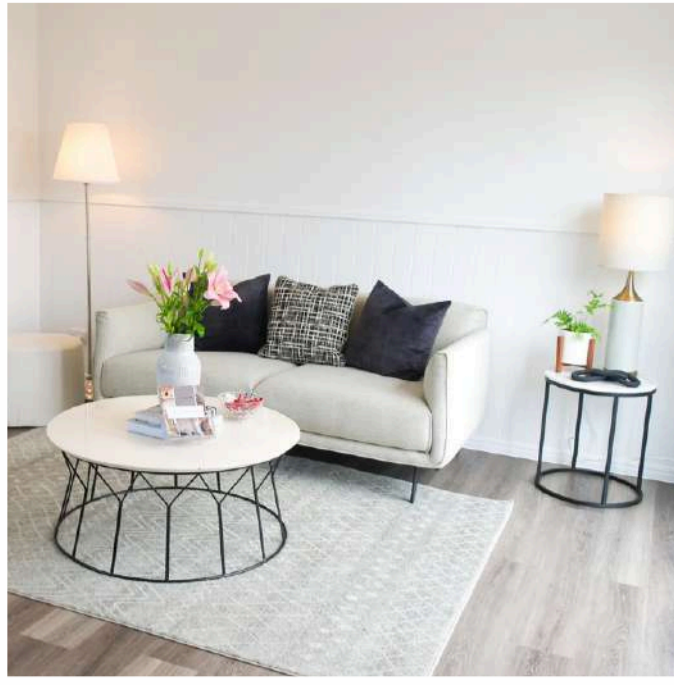
# AFFORDABLE TRANSPORTABLE HOMES

LEADING SPECIALISTS IN  
MODULAR HOMES

- Consultation
- Design
- Renovation
- Maintenance

+ 1800 411 805  
affordabletransportablehomes.com  
9 Selhurst Street, Coopers Plains,  
QLD 4108





WELCOME TO

## AFFORDABLE TRANSPORTABLE HOMES

Your new go-to provider of world-class modular dwellings.

Affordable Transportable Homes provides the highest level of quality service to create a modular building that meets your needs.

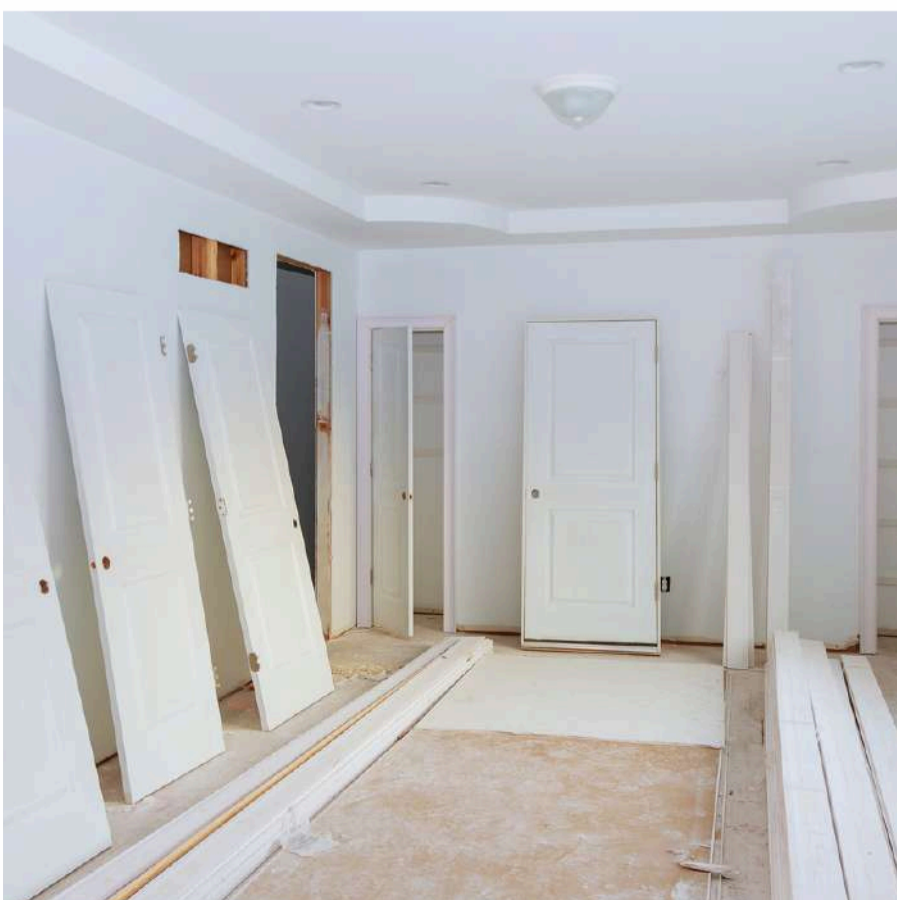
Modular homes are built with efficiency, sustainability, and personalized design in mind, making them a modern and eco-friendly living solution.

Each of our dwellings have been designed and built with quality and comfort front of mind, at an accessible price point.

When we say we're affordable, we really mean it. Our decades of experience in the industry mean we work closely with the very best material suppliers who provide us with the best quality for less.

This information brochure showcases our current offerings and how we'll work with you to deliver your project seamlessly.

Our services: Modular homes, Granny Flats, Offices, Inclusive Spaces, Custom Built, Decks-Pergolas, and Turnkey Solutions



**BUILD YOUR**  
**DREAM MODULAR**  
**HOME**

# ACACIA



\*Includes building approval & certification



LENGTH  
10 m

WIDTH  
3.96 m

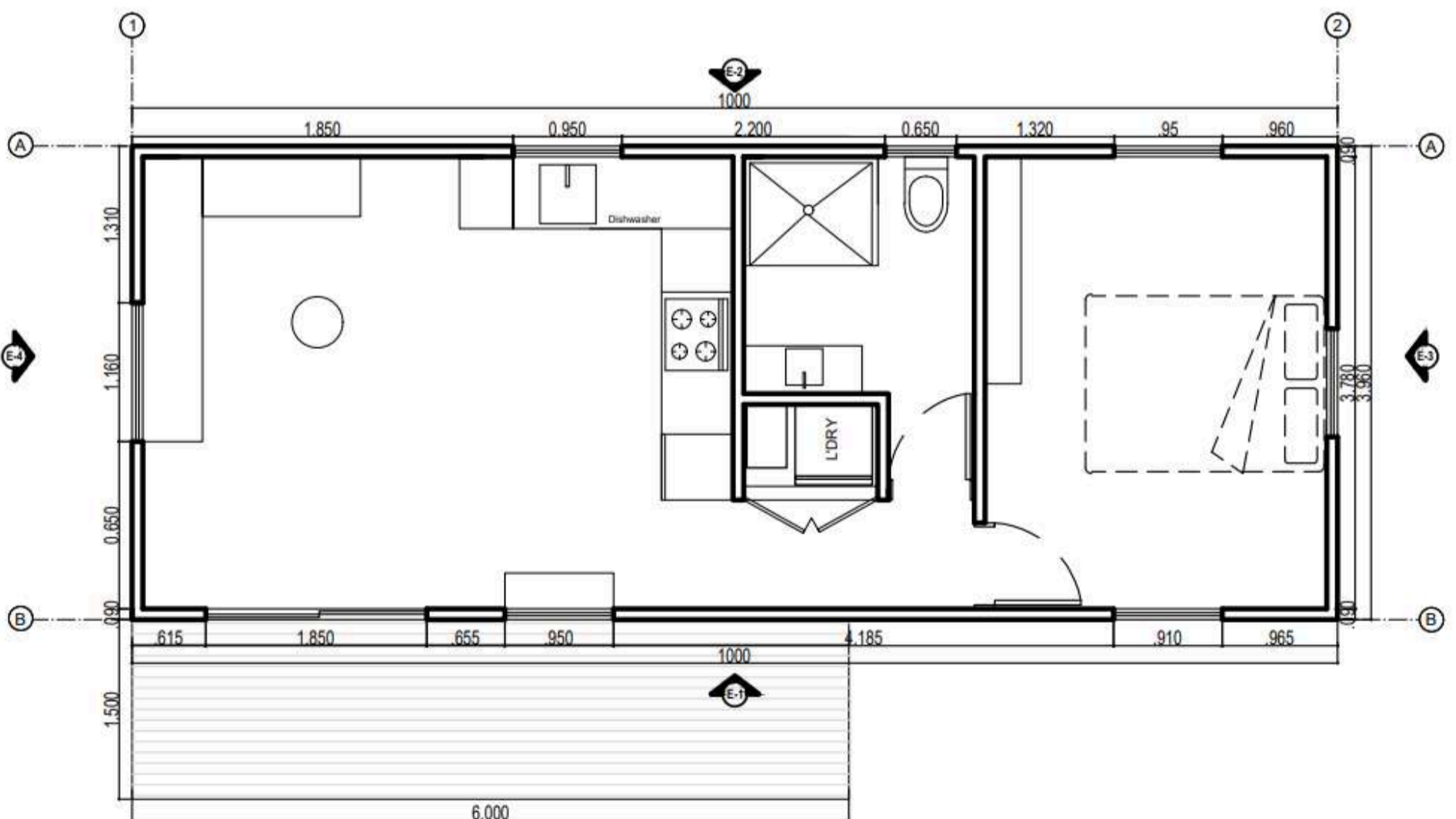
TOTAL  
39.6 m<sup>2</sup>

AFFORDABLE TRANSPORTABLE HOMES

- There are over 1,200 species of Acacia and they are found growing naturally in all Australian states and even overseas. In Australia they are known as 'wattles' and the golden wattle, *Acacia pycnantha*, is Australia's floral emblem.

## Included features:

- One bedroom
- One bathroom
- Premium accessories
- Kitchen and storage
- Room for laundry
- Living room
- Glass doors and windows
- Electric hot water system



# ACACIA



\*Includes building approval & certification



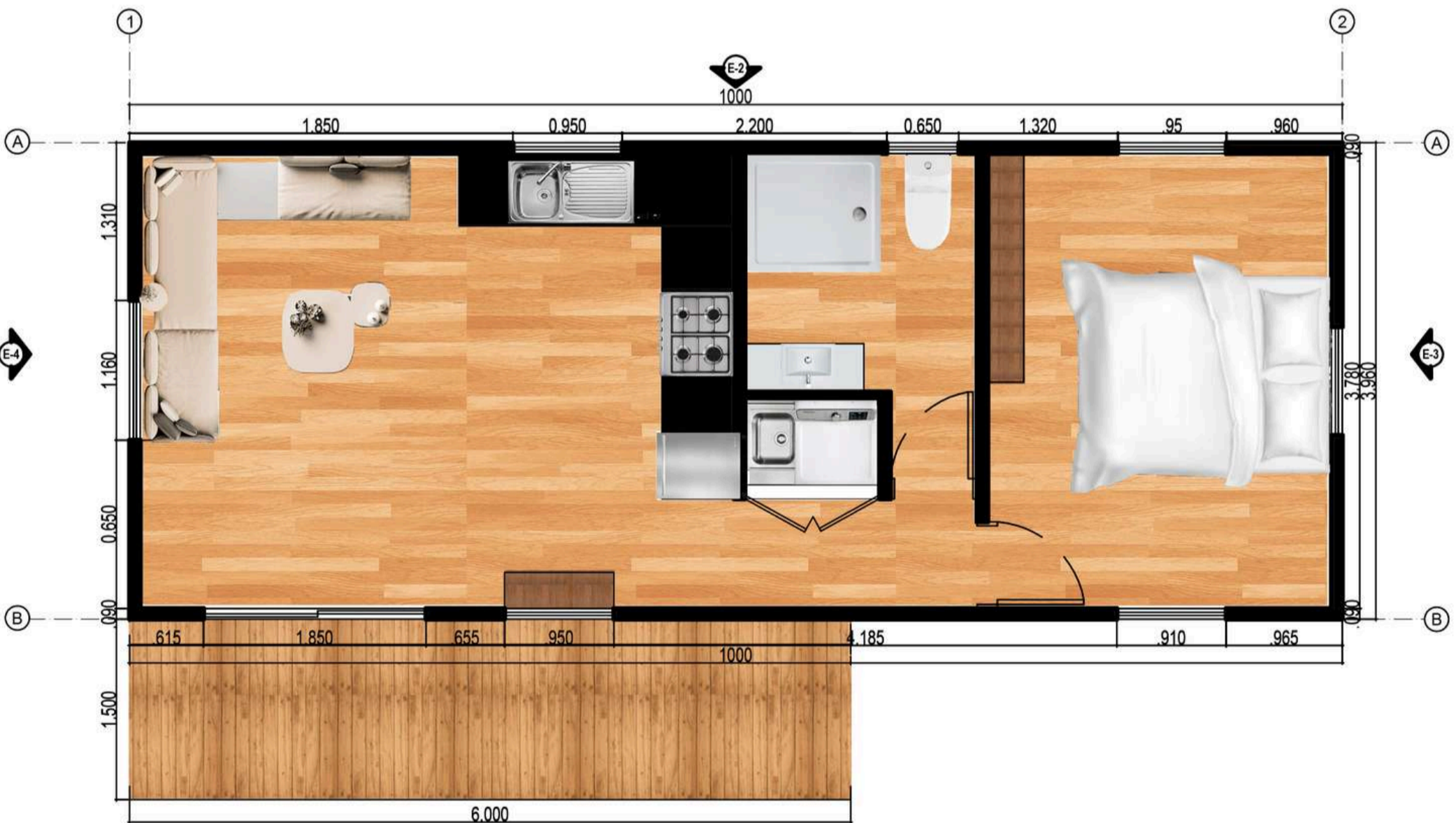
AFFORDABLE TRANSPORTABLE HOMES

LENGTH  
10 m

WIDTH  
3.96 m

TOTAL  
39.6 m<sup>2</sup>

## GALLERY



# ASPEN



\*Includes building approval & certification



LENGTH  
12 m

WIDTH  
8.395 m

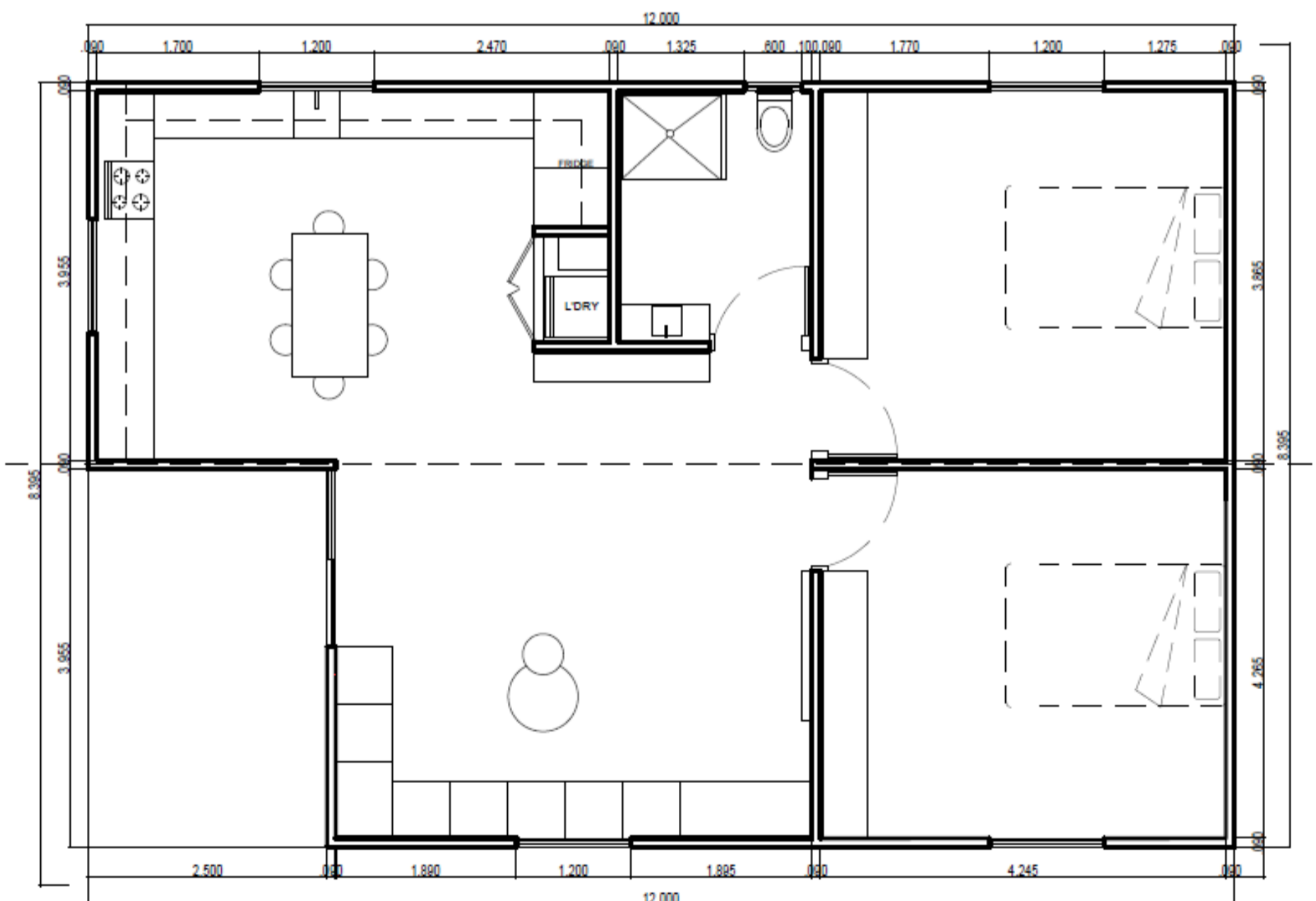
TOTAL  
100.74 m<sup>2</sup>

AFFORDABLE TRANSPORTABLE HOMES

- Aspen allows plenty of room for movement, with a generous open plan living area. Each bedroom easily fits a queen size bed, with plenty of space leftover for a chest of drawers and bedside table.

## Included features:

- Two bedrooms
- One bathroom
- Kitchen and storage
- Premium accessories
- Room for laundry
- Living room
- Glass doors and windows
- Electric hot water system



# ASPEN



\*Includes building approval & certification



LENGTH  
12 m

WIDTH  
8.395 m

TOTAL  
100.74 m<sup>2</sup>

AFFORDABLE TRANSPORTABLE HOMES

## GALLERY



# BANKSIA



1



2

\*Includes building approval & certification



LENGTH  
12 m

WIDTH  
3.85 m

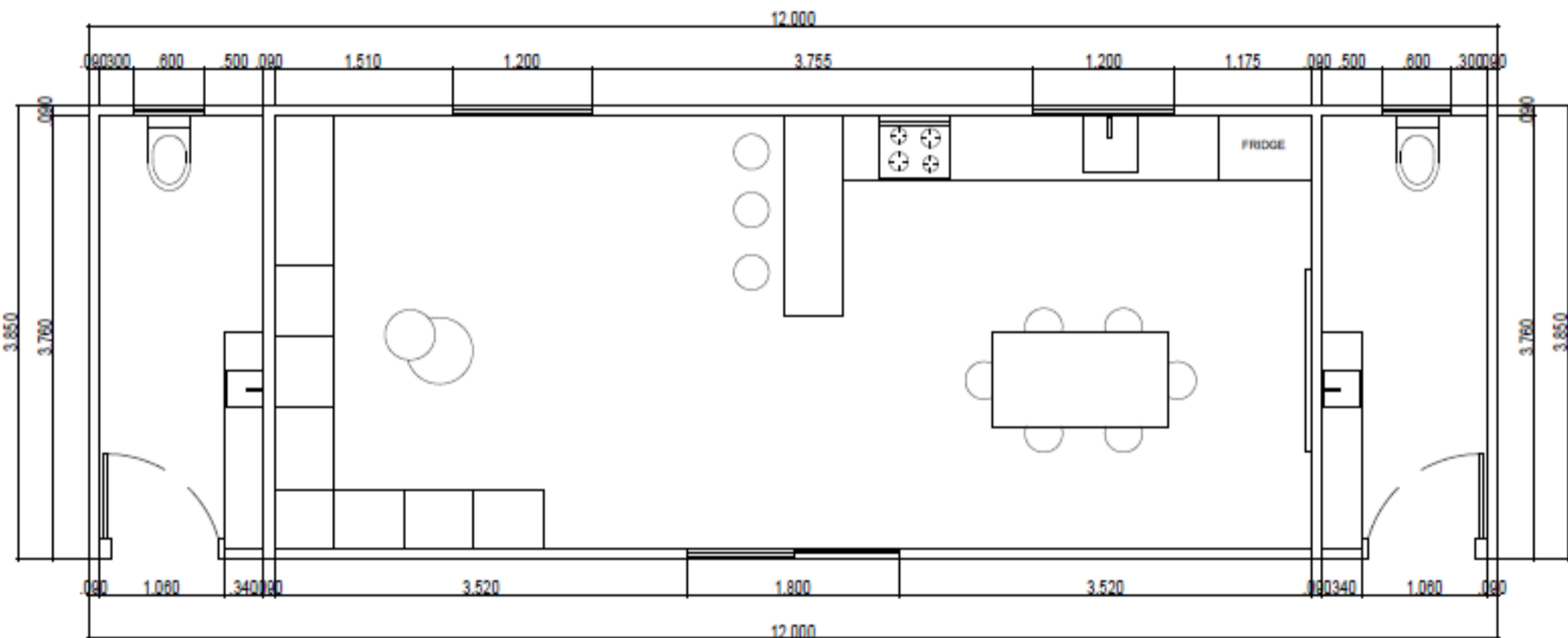
TOTAL  
46.2 m<sup>2</sup>

AFFORDABLE TRANSPORTABLE HOMES

If you're in need of a dining or office space, Banksia is the perfect choice. Enjoy a spacious open plan area with plenty of room for the furniture you need to deck out your space. Complete with a kitchenette and two toilets, Banksia gives you everything you need in a multipurpose space.

Included features:

- Two bathrooms
- A spacious living room
- Kitchen and storage
- Premium accessories
- Electric hot water system



# BANKSIA



1



2

\*Includes building approval & certification



LENGTH  
12 m

WIDTH  
3.85 m

TOTAL  
46.2 m<sup>2</sup>

AFFORDABLE TRANSPORTABLE HOMES

## GALLERY





# BAUERA



1



1



\*Includes building approval & certification

LENGTH  
3.96 m

WIDTH  
10 m

TOTAL  
39.6 m<sup>2</sup>

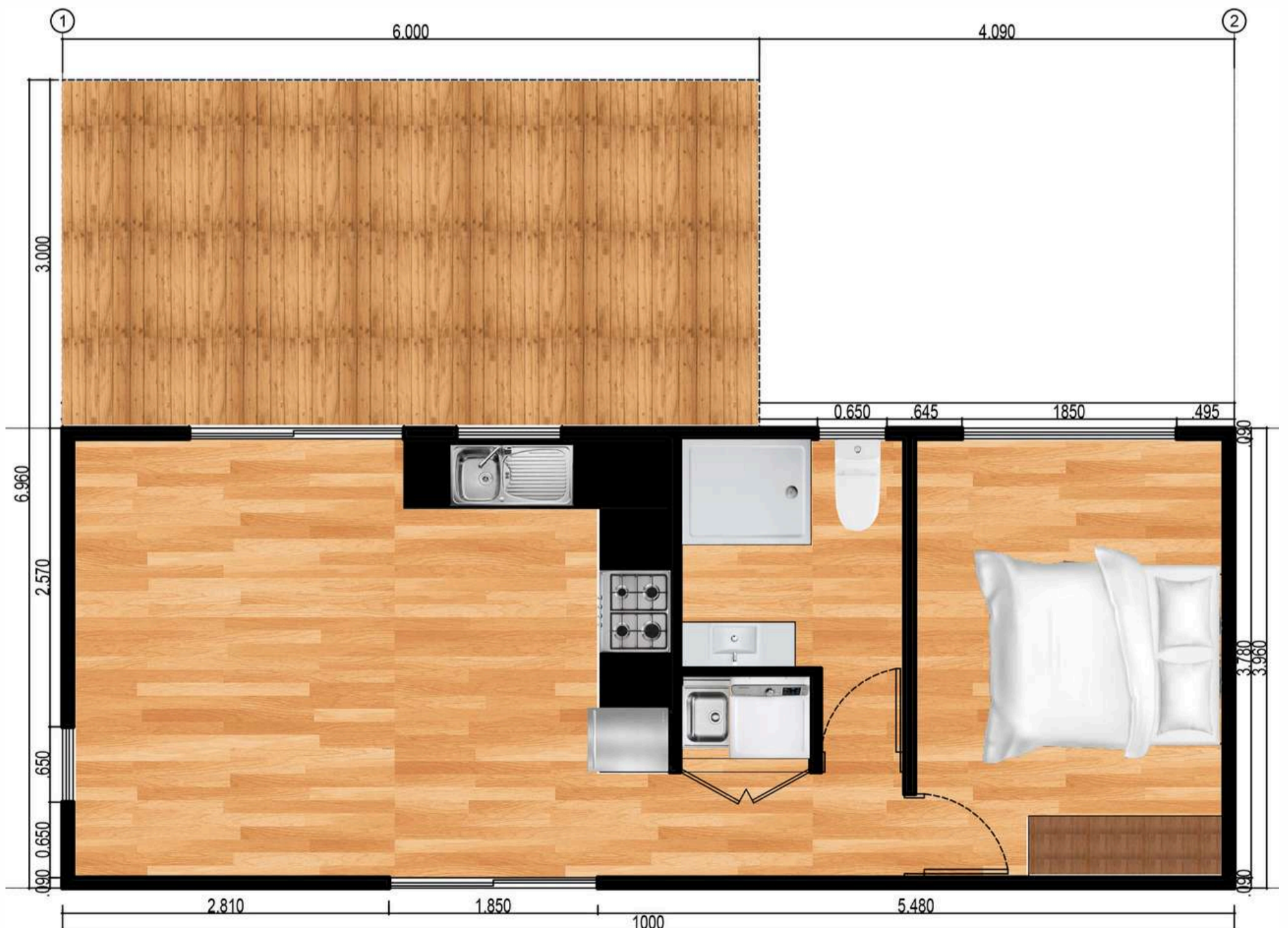
AFFORDABLE TRANSPORTABLE HOMES

with deck 6.96 m x 10m

This is one of those extremely useful Australian native shrubs that grows well in moist soils and also flowers well in shady spots. Bauera is commonly found growing along shady creek banks in eastern Australia where it forms a low growing habit that is dotted with delicate pink flowers sporadically through the year.

## Included features:

- One bedroom
- One bathrom
- Room for laundry
- Premium accessories
- Kitchen and storage
- A large additional room
- Electric hot water system



# BORONIA



\*Includes building approval & certification



LENGTH  
15 m

WIDTH  
4 m

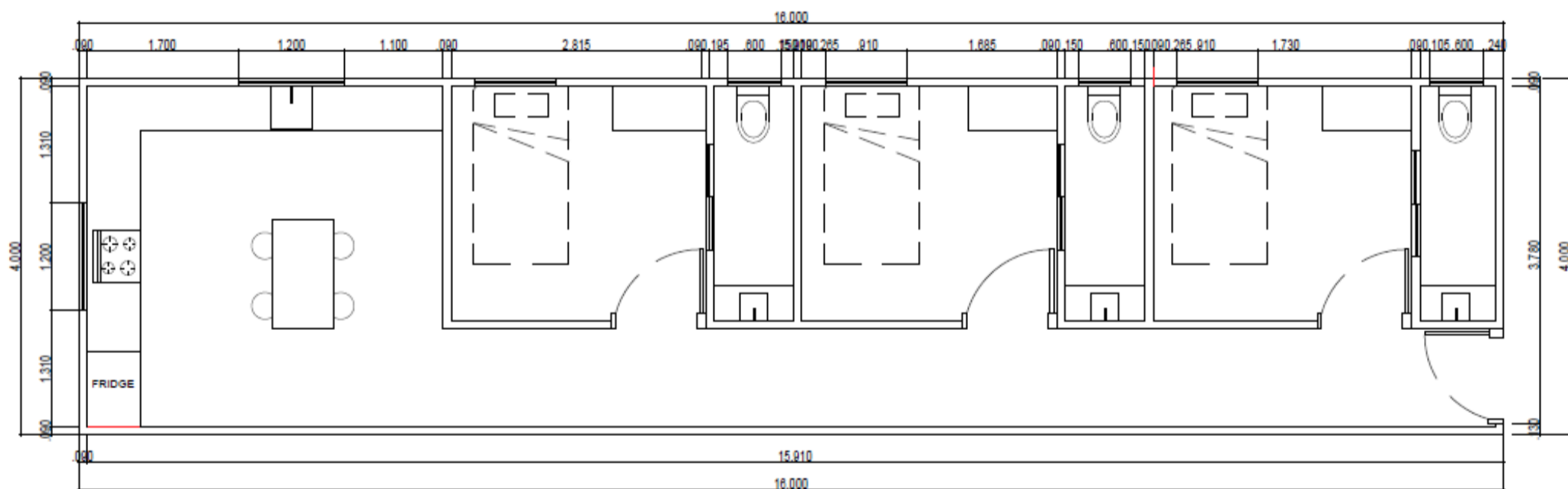
TOTAL  
60 m<sup>2</sup>

AFFORDABLE TRANSPORTABLE HOMES

Boronias are delightful flowering plants native to Australia. Belonging to the citrus Rutaceae family, they are renowned for their exquisite, fragrant blossoms and striking foliage. Cherished by garden enthusiasts for their vibrant colours and sweet enticing scent, Boronias are commonly used in ornamental horticulture.

## Included features:

- Three sized bedrooms with individual toilets
- Premium accessories
- Kitchen and storage
- Dining room
- Electric hot water system



# BORONIA

 3  3

\*Includes building approval & certification



LENGTH  
15 m

WIDTH  
4 m

TOTAL  
60 m<sup>2</sup>

AFFORDABLE TRANSPORTABLE HOMES

## GALLERY



## MULTIPURPOSE SPACE



## BATHROOM

# BOTTLE BRUSH



\*Includes building approval & certification



LENGTH  
15 m

WIDTH  
3.64 m

TOTAL  
54.6 m<sup>2</sup>

AFFORDABLE TRANSPORTABLE HOMES

Maximise the space on your site with our Bottle Brush dormitories. Each dormitory has three private bedrooms, a shared bathroom and combined living and kitchen area. The bathroom is spacious enough to allow for a washing machine and dryer, saving you from building separate facilities.

Included features:

- Three sized bedrooms
- One shared room for the bathroom and laundry
- Premium accessories
- Kitchen and storage
- Dining room
- Electric hot water system



# BOTTLE BRUSH



\*Includes building approval & certification



AFFORDABLE TRANSPORTABLE HOMES

LENGTH  
15 m

WIDTH  
3.64 m

TOTAL  
54.6 m<sup>2</sup>

## GALLERY



BATHROOM



MASTER BEDROOM



BEDROOM



DINING + KITCHEN

# CORREA



\*Includes building approval & certification



LENGTH  
3.6 m

WIDTH  
2.4 m

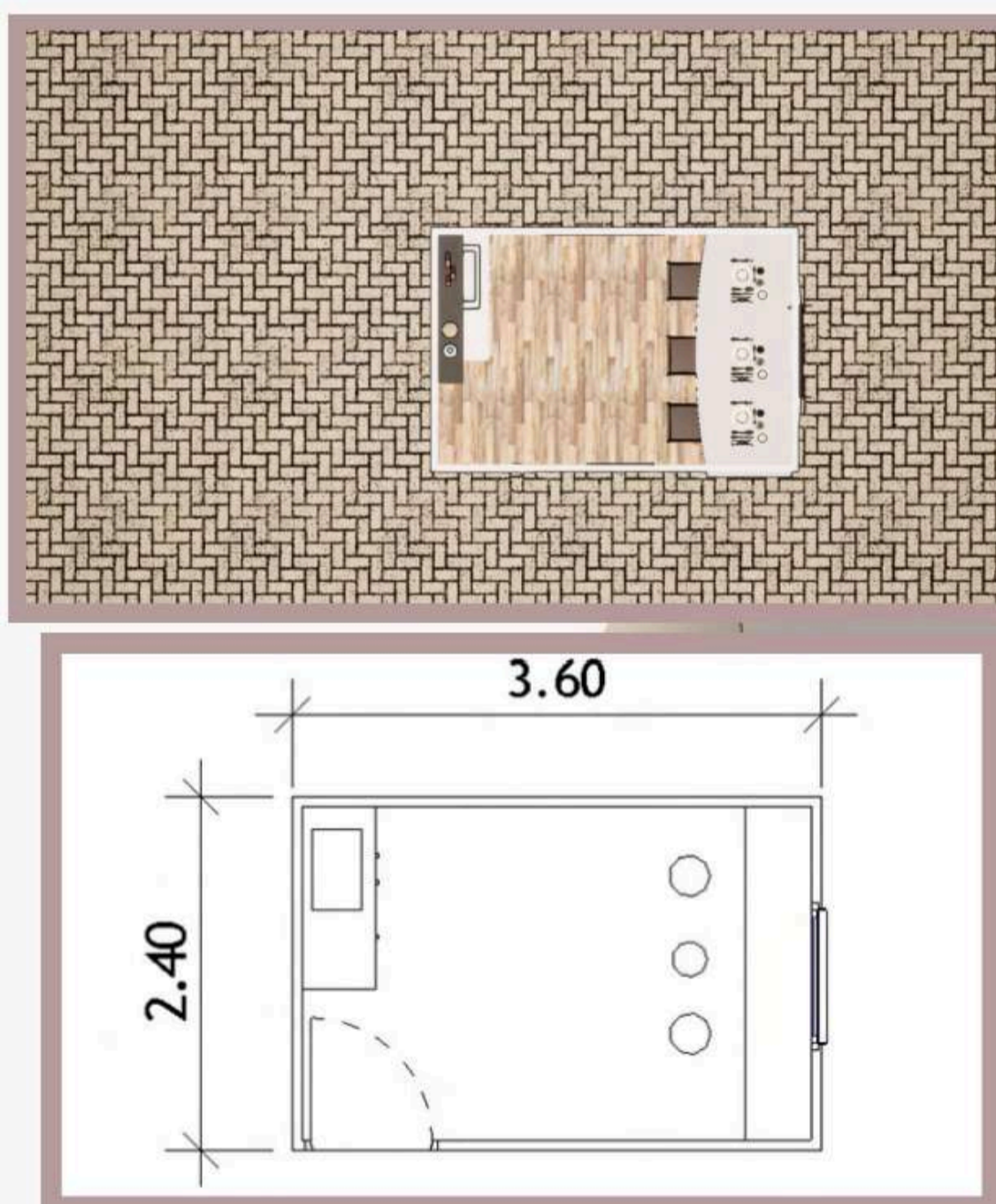
TOTAL  
8.64 m<sup>2</sup>

AFFORDABLE TRANSPORTABLE HOMES

- Correa is a dedicated dining space with a built-in dining table and washing up area. This is the perfect add-on to our dormitories or site offices.

Included features:

- Kitchen and storage
- Dining room
- Premium accessories
- Electric hot water system



# CREVILLEA



\*Includes building approval & certification



LENGTH  
11.7 m

WIDTH  
4.2 m

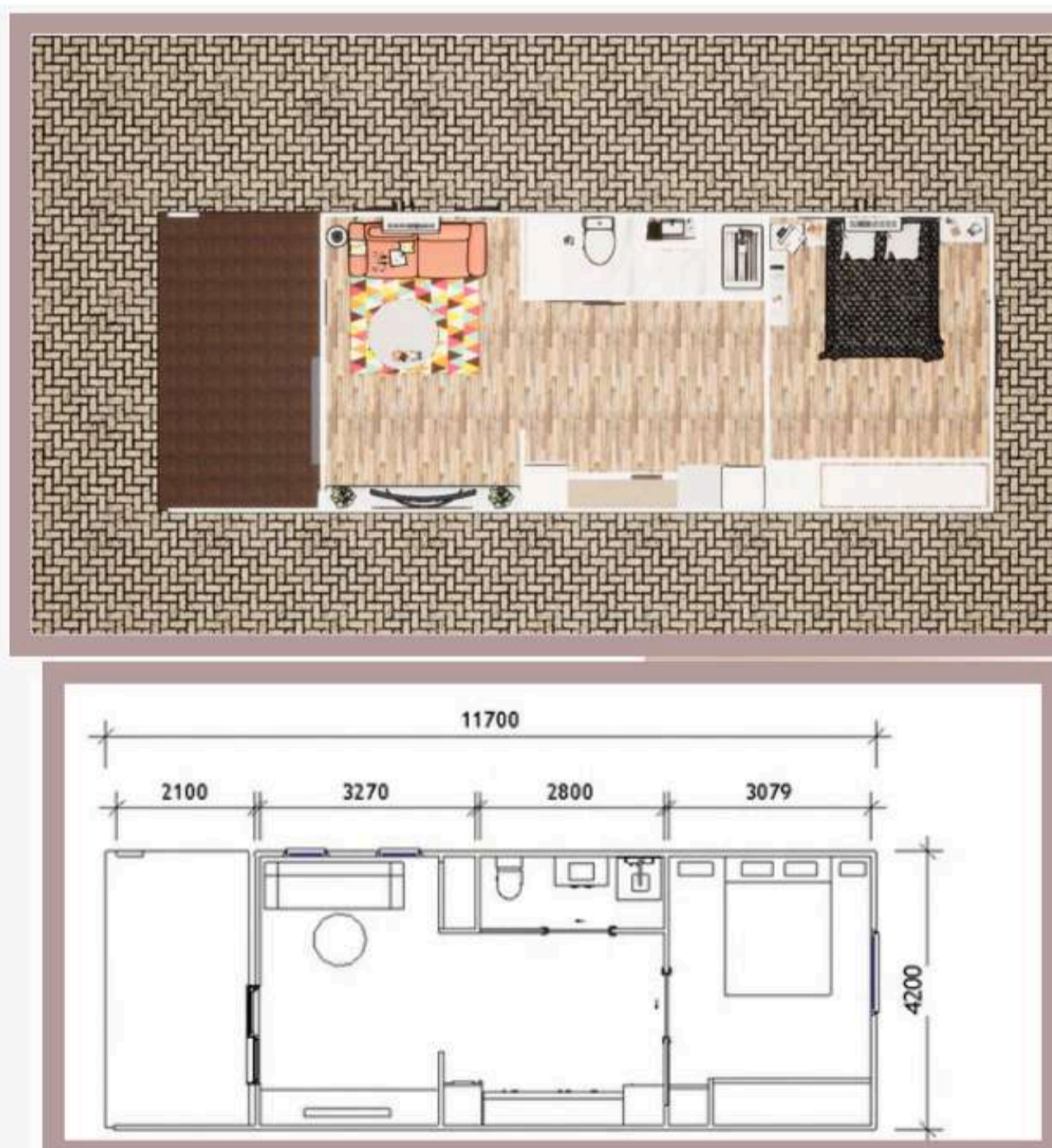
TOTAL  
49.14 m<sup>2</sup>

AFFORDABLE TRANSPORTABLE HOMES

- Equipped with a kitchenette and enough space for a washing machine and dryer, Crevillea is the perfect option for long term residents. The home also has an expansive living area and large bedroom, and a generously sized deck.

## Included features:

- One bedroom
- One shared room for the bathroom and laundry
- One living room
- Kitchen room
- Premium accessories
- Electric hot water system



# CREVILLEA



\*Includes building approval & certification



LENGTH  
11.7 m

WIDTH  
4.2 m

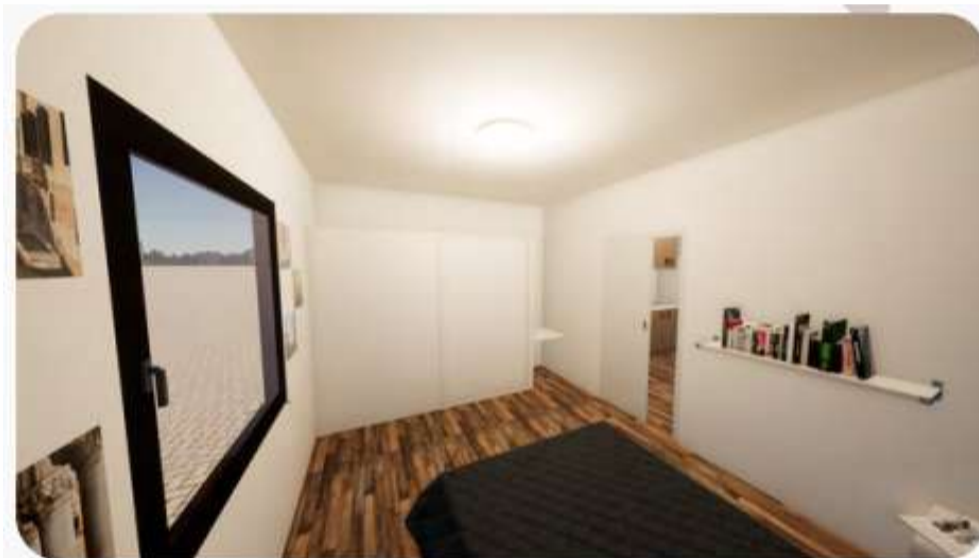
TOTAL  
49.14 m<sup>2</sup>

AFFORDABLE TRANSPORTABLE HOMES

## GALLERY



BATHROOM



MASTER BEDROOM



BEDROOM



DINING + KITCHEN



# DESERT HOME



\*Includes building approval & certification



LENGTH  
10.98 m

WIDTH  
4.2 m

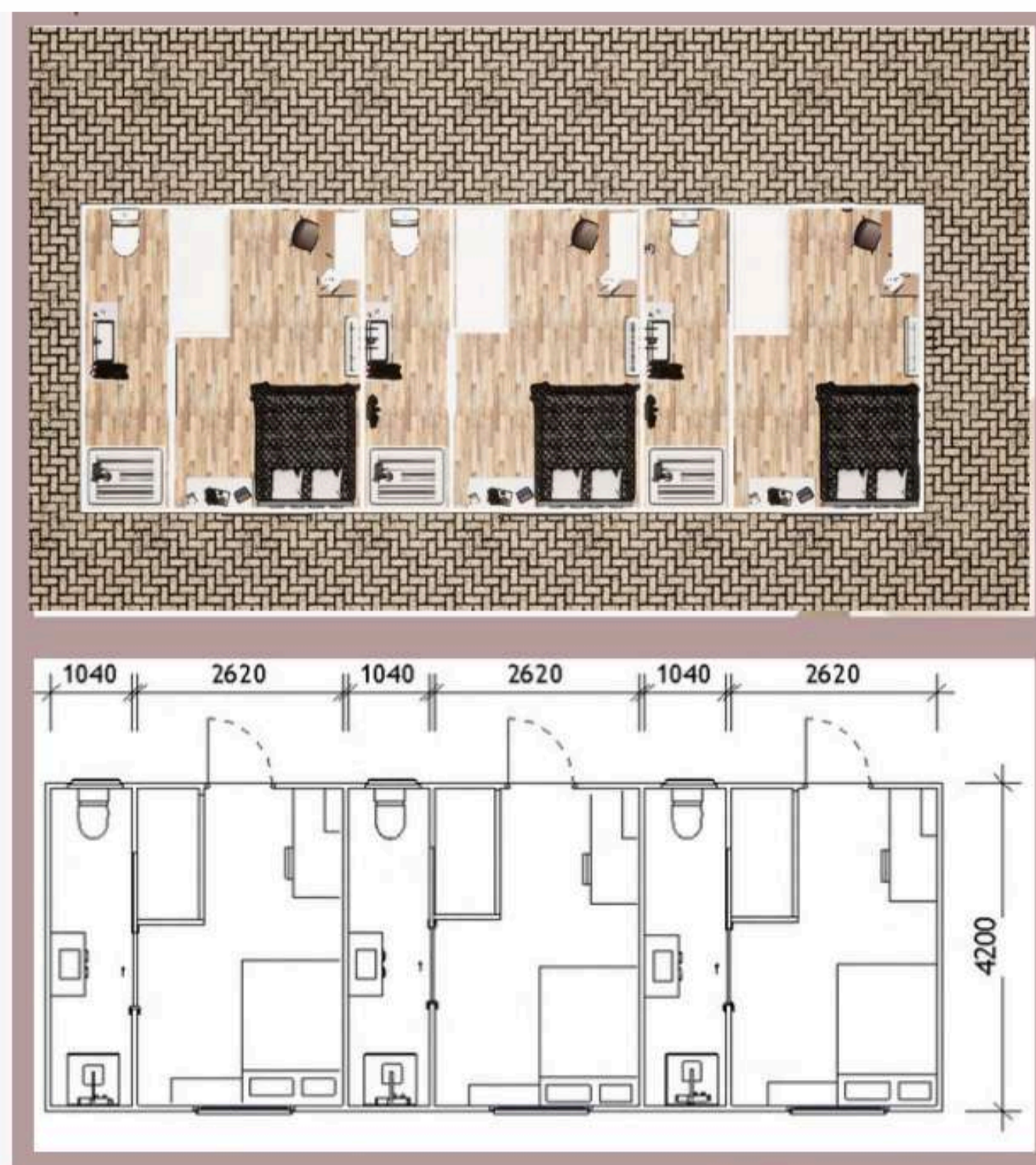
TOTAL  
46.12 m<sup>2</sup>

AFFORDABLE TRANSPORTABLE HOMES

If you're looking for sleeping quarters, our desert homes are the perfect solution. Each home has three bedrooms complete with a private entrance and their own compact shower and toilet, ensuring privacy without compromising on space.

Included features:

- Three sized bedrooms with individual toilets
- Premium accessories
- Electric hot water system



# DESERT HOME

 3  3

\*Includes building approval & certification



LENGTH  
10.98 m

WIDTH  
4.2 m

TOTAL  
46.12 m<sup>2</sup>

AFFORDABLE TRANSPORTABLE HOMES

## GALLERY



BEDROOM



BATHROOM

# DIANELLA



2



2

\*Includes building approval & certification



LENGTH  
12 m

WIDTH  
2.4 m

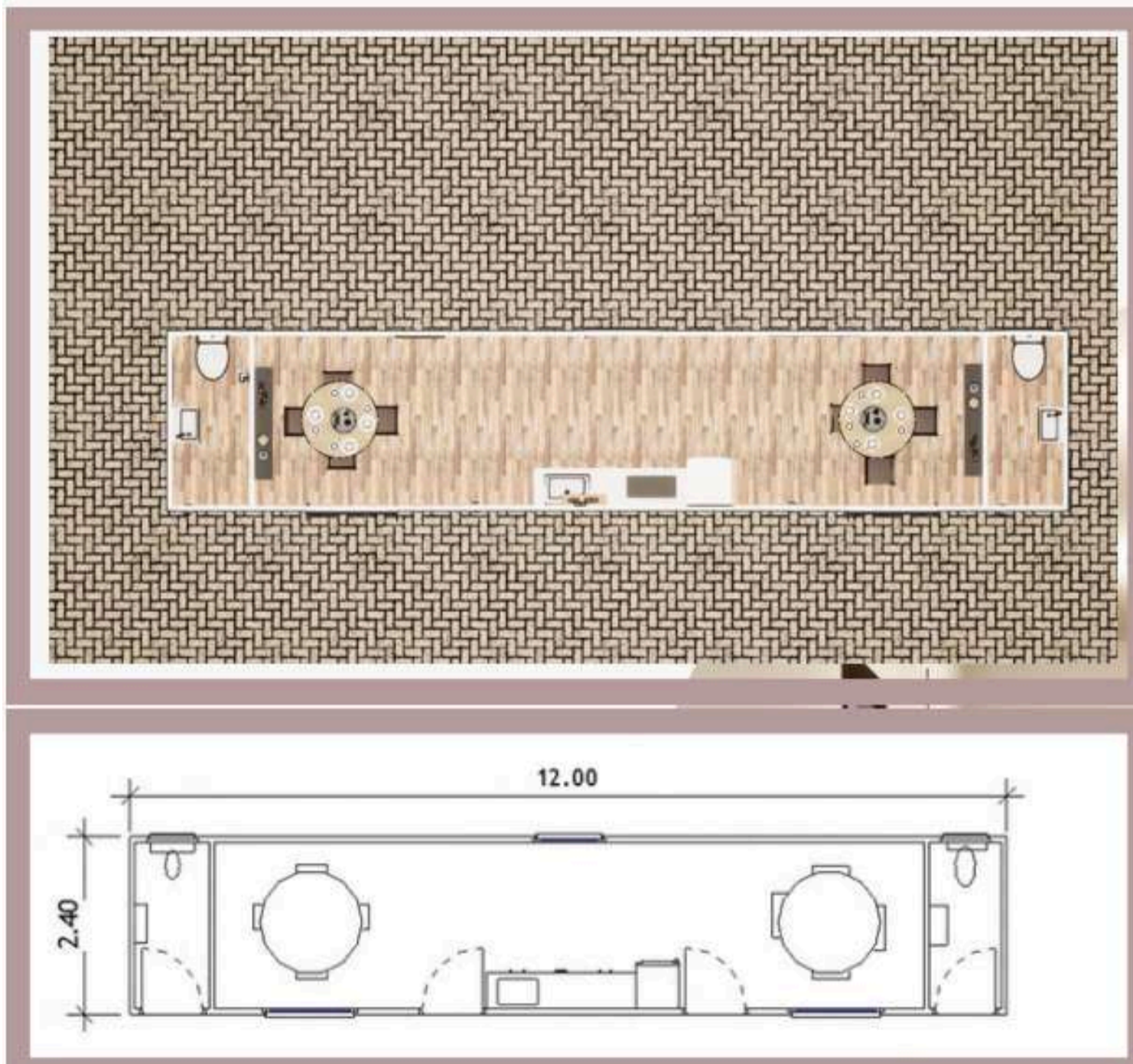
TOTAL  
28.8 m<sup>2</sup>

AFFORDABLE TRANSPORTABLE HOMES

- • • Need to squeeze in a dining area but are a bit tight on space? Our Dianella option is a slimline building with enough room for tables, kitchenette facilities and two bathrooms.

Included features:

- One kitchen and storage
- Two dining rooms
- Two bathrooms
- Premium accessories
- Electric hot water system



# DRIGGER



\*Includes building approval & certification



LENGTH  
8 m

WIDTH  
11.6 m

TOTAL  
92.8 m<sup>2</sup>

AFFORDABLE TRANSPORTABLE HOMES

- • • With two generously sized bedrooms and bathrooms, a study and a kitchen that flows into the large living area, Drigger is the complete package!

Included features:

- Two bedrooms
- Two bathrooms, one of them shared room with the laundry
- A large living room and a small one
- Kitchen and a dining room
- Premium accessories
- Electric hot water system



# EMARALCH



\*Includes building approval & certification



LENGTH  
18.27 m

WIDTH  
8 m

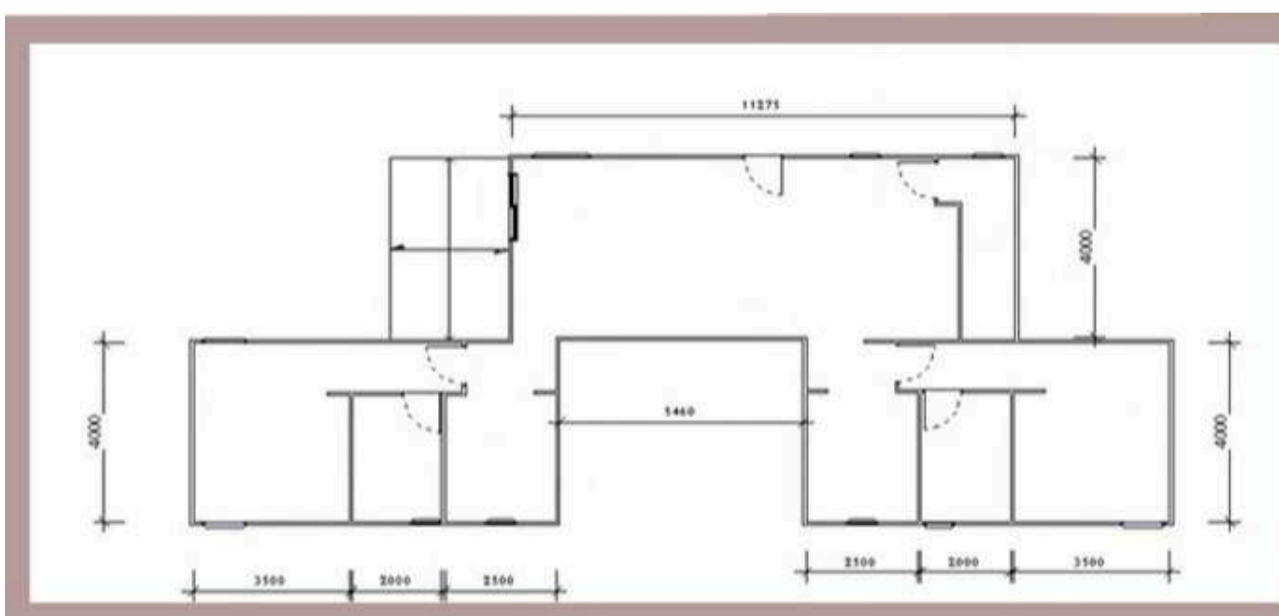
TOTAL  
109 m<sup>2</sup>

AFFORDABLE TRANSPORTABLE HOMES

If privacy and space are a priority, take a look at Emaralch.

Included features:

- Two bedrooms with their own ensuites and offices
- Two bathrooms
- Three dining rooms
- One living room
- Premium accessories
- Electric hot water system



# EMARALCH



\*Includes building approval & certification



LENGTH  
18.27 m

WIDTH  
8 m

TOTAL  
109 m<sup>2</sup>

AFFORDABLE TRANSPORTABLE HOMES

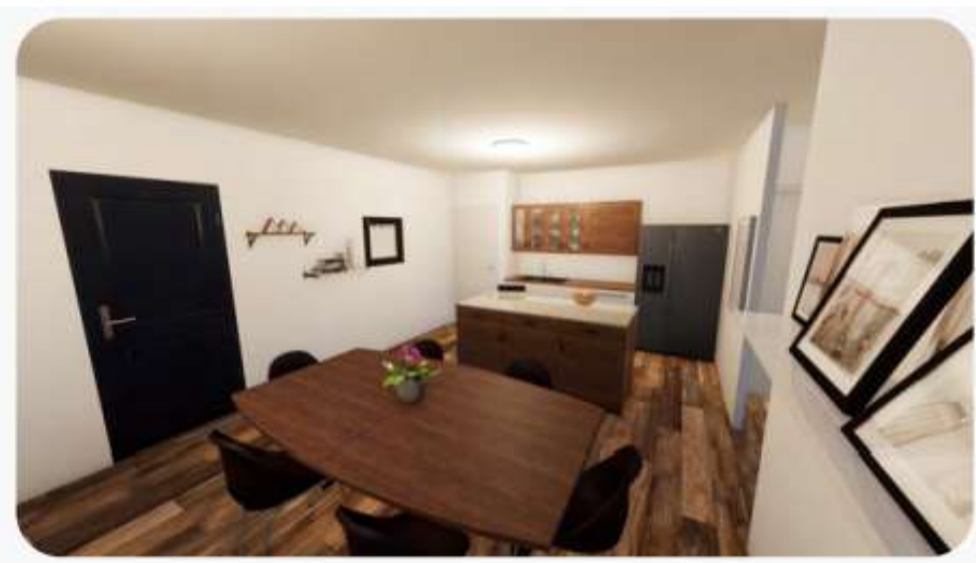
## GALLERY



BATHROOM



BEDROOM



KITCHEN



LIVING AREA



OFFICE

# EUCALYPTUS



\*Includes building approval & certification



LENGTH  
9.42 m

WIDTH  
4.2 m

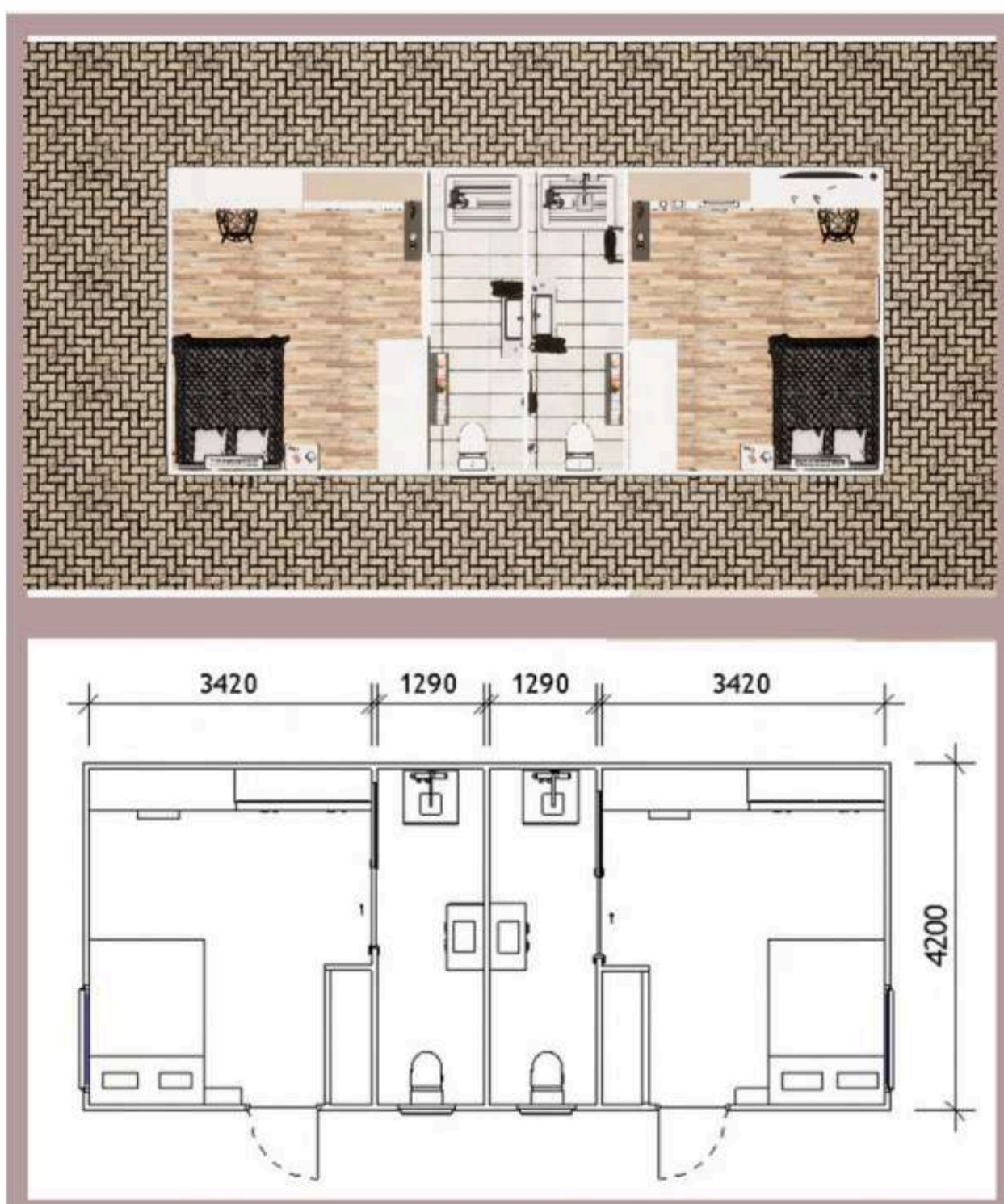
TOTAL  
40 m<sup>2</sup>

AFFORDABLE TRANSPORTABLE HOMES

- • • Eucalypts are iconic Australian forest trees. The Eucalyptus forest type is by far the most common forest type in Australia covering 101 million hectares, which is 77% of Australia's total native forest area.

## Included features:

- Two large bedrooms and ensuites, with a built-in wardrobe
- Bench tops for food preparation and enough room for a desk and couch
- Two bathrooms
- Premium accessories
- Electric hot water system



# EUCALYPTUS



\*Includes building approval & certification



LENGTH  
9.42 m

WIDTH  
4.2 m

TOTAL  
40 m<sup>2</sup>

AFFORDABLE TRANSPORTABLE HOMES

## GALLERY



## BEDROOM



## BATHROOM



# HEATH



\*Includes building approval & certification



LENGTH  
4.8 m

WIDTH  
3 m

TOTAL  
14.4 m<sup>2</sup>

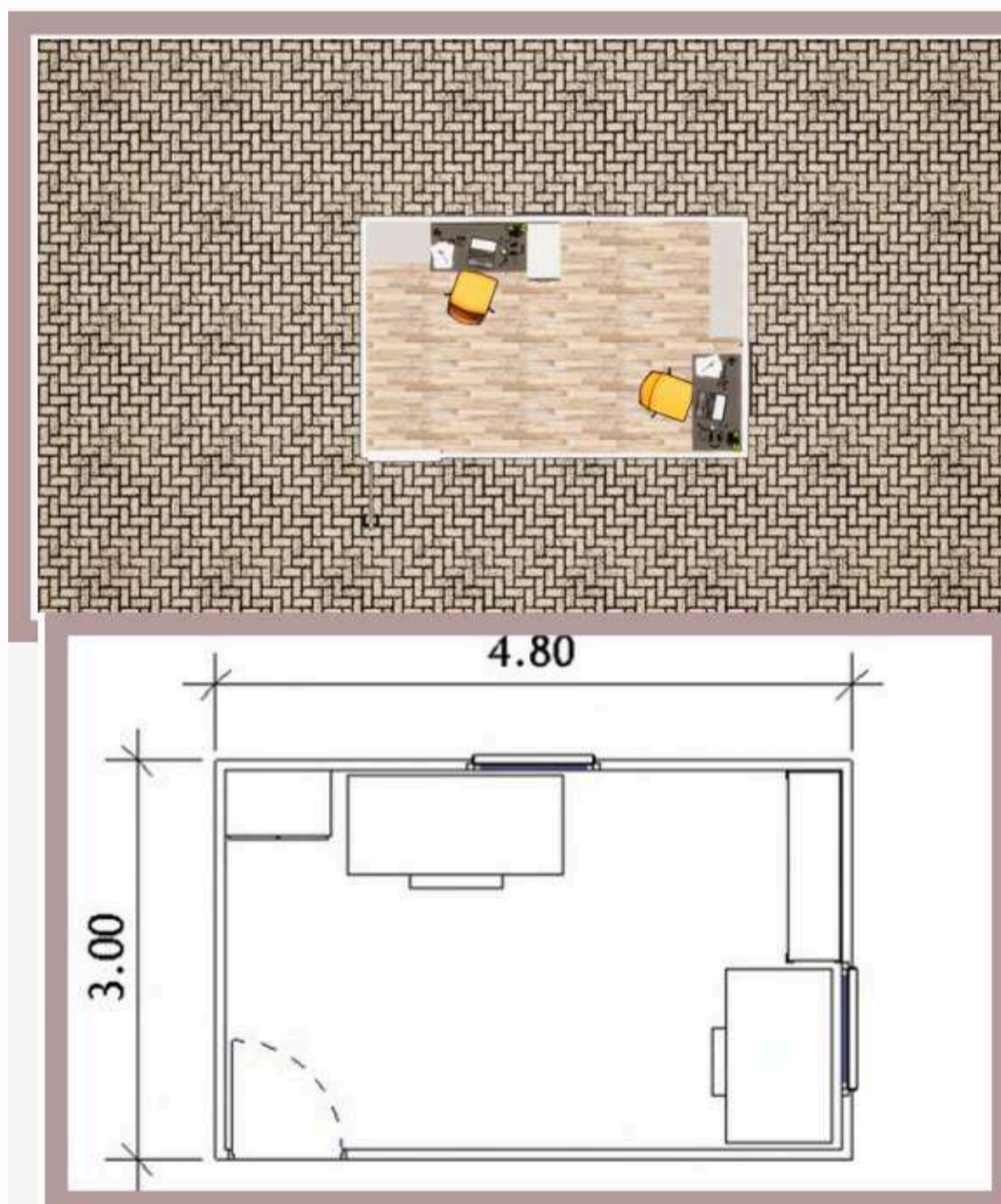
AFFORDABLE TRANSPORTABLE HOMES

- Heath is an attractive medium sized open shrub that is worth growing for the showy masses of bell flowers produced from autumn to spring. They are great for floral work, and can range from deep pink to red and white forms.

This project is your solution for a simple site office, with a large room for two desks and a file storage area.

Included features:

- Premium accessories
- Electric hot water system



# KANGAROO PAW



\*Includes building approval & certification



LENGTH  
9.24 m

WIDTH  
4.2 m

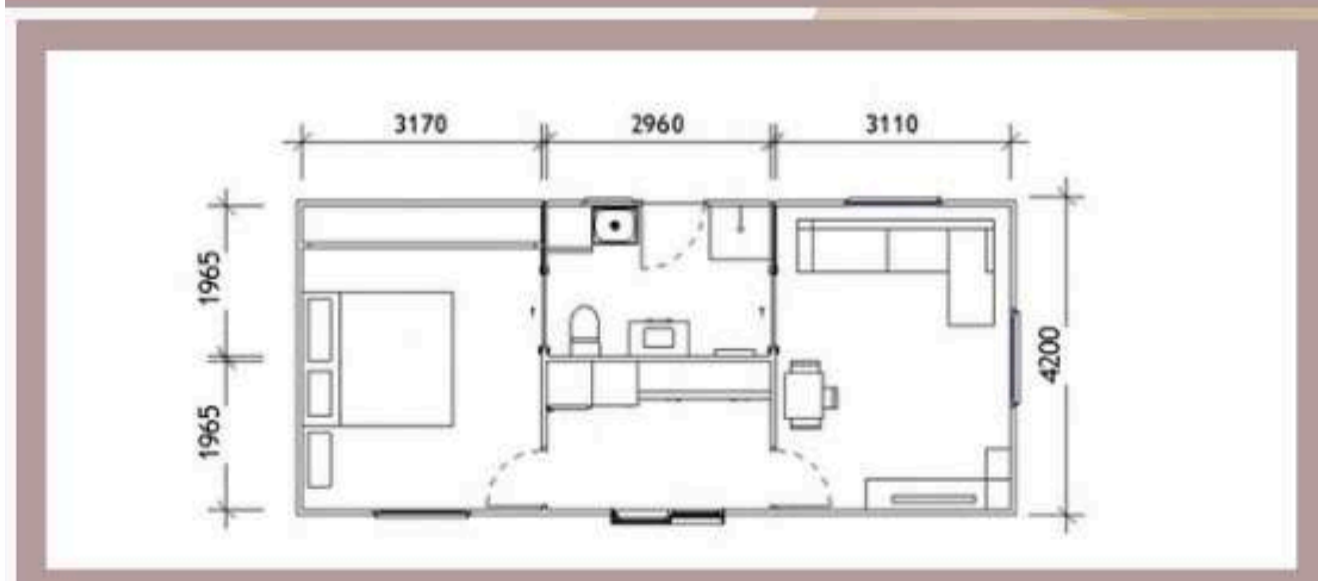
TOTAL  
38.8 m<sup>2</sup>

AFFORDABLE TRANSPORTABLE HOMES

Kangaroo Paw is an essential plant for the Australia style garden. With their unique flower style and their ability to attract native birds, they are best planted en masse to give the wow factor when in bloom.

Included features:

- Spacious one-bedroom option
- One large living area
- One shared room for the bathroom and laundry
- Premium accessories
- Electric hot water system



# KANGAROO PAW



\*Includes building approval & certification



AFFORDABLE TRANSPORTABLE HOMES

LENGTH  
9.24 m

WIDTH  
4.2 m

TOTAL  
38.8 m<sup>2</sup>

## GALLERY



KITCHEN



BATHROOM



LIVING AREA



BEDROOM

# LILAC



\*Includes building approval & certification



LENGTH  
22 m

WIDTH  
11.5 m

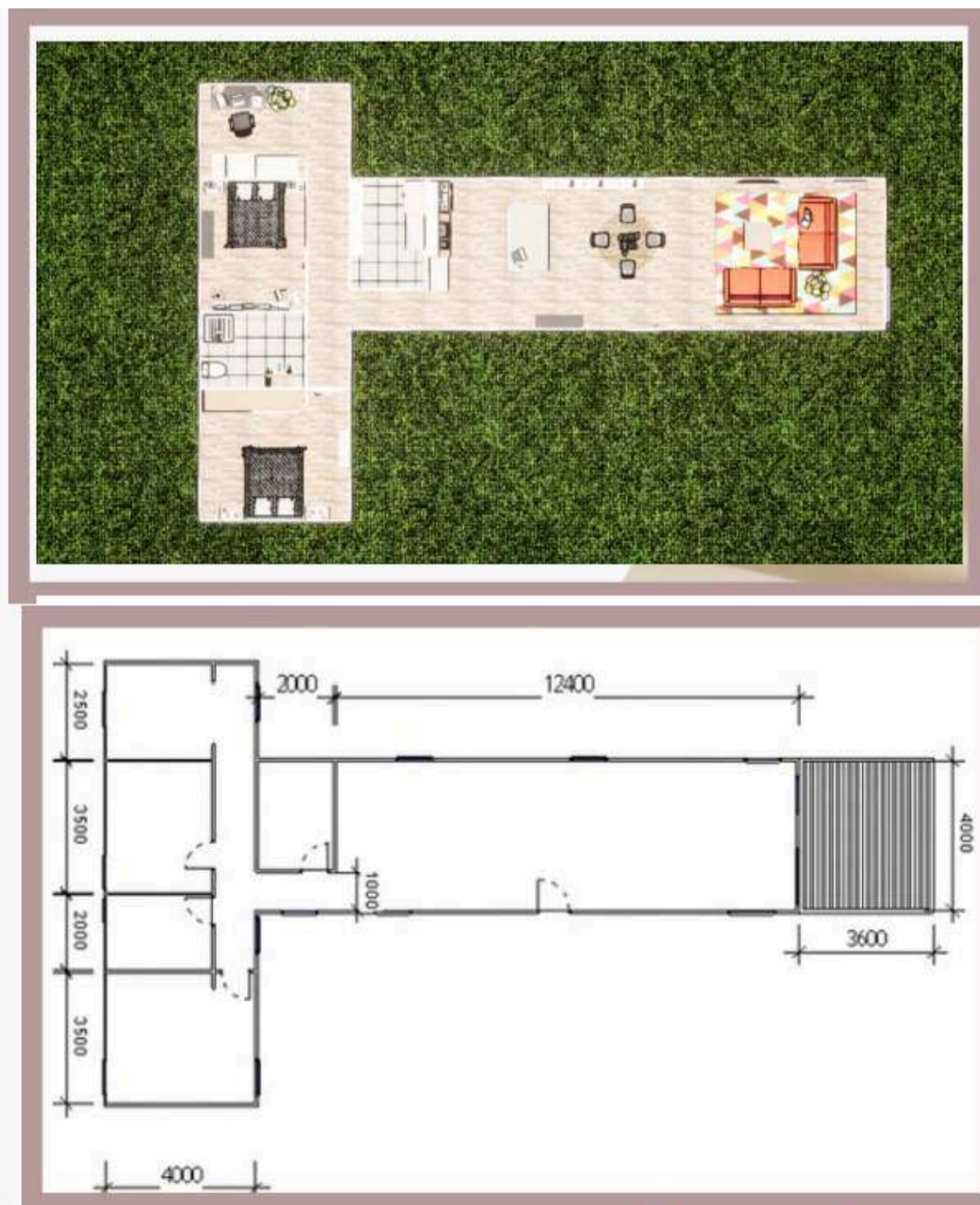
TOTAL  
103.6 m<sup>2</sup>

AFFORDABLE TRANSPORTABLE HOMES

- Lilac is typically grown for its intense fragrance and beautiful blooms. Flowers can range in color from pink to purple; however, white and yellow varieties are also available. They can add a good source of shade or privacy when planted as a hedgerow.

## Included features:

- Two bedrooms
- One bathroom
- One office room
- Spacious living room and dining room
- Premium accessories
- Electric hot water system



# LILAC



\*Includes building approval & certification



LENGTH  
22 m

WIDTH  
11.5 m

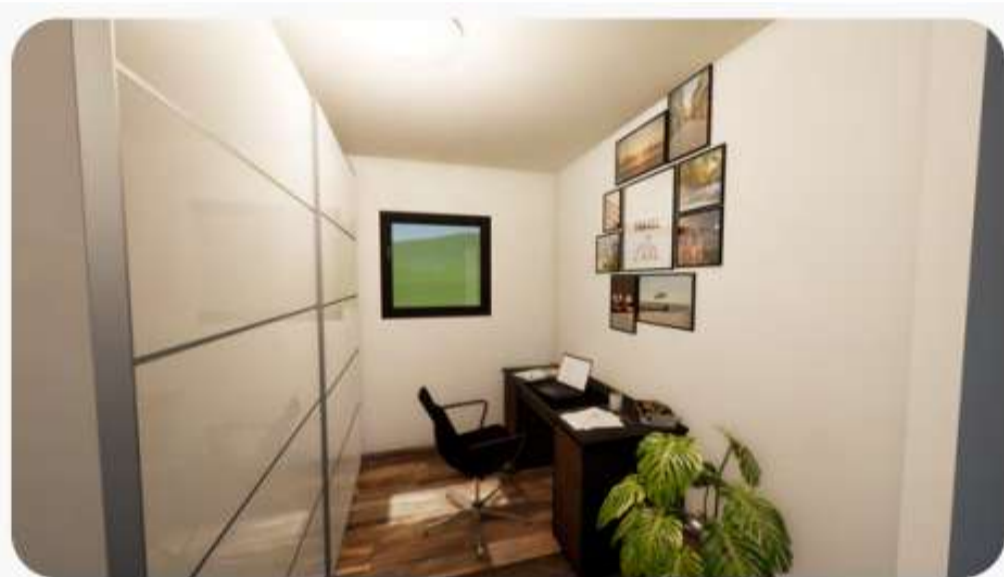
TOTAL  
103.6 m<sup>2</sup>

AFFORDABLE TRANSPORTABLE HOMES

## GALLERY



KITCHEN



OFFICE



LIVING AREA



BEDROOM

# LILLY PILLY



\*Includes building approval & certification



LENGTH  
9.7 m

WIDTH  
3.4 m

TOTAL  
33 m<sup>2</sup>

AFFORDABLE TRANSPORTABLE HOMES

Lilly Pilly is the perfect retreat. Don't let its slimline design fool you - you'll love the large bedroom, spacious living area and kitchen.

Included features:

- One bedroom
- One bathroom
- Kitchen and storage
- Dining room
- Premium accessories
- Electric hot water system



# LILLY PILLY



\*Includes building approval & certification



LENGTH  
9.7 m

WIDTH  
3.4 m

TOTAL  
33 m<sup>2</sup>

AFFORDABLE TRANSPORTABLE HOMES

## GALLERY



## LIVING AREA



## BEDROOM

# NAMBUCA



\*Includes building approval & certification



LENGTH  
15.5 m

WIDTH  
14.26 m

TOTAL  
103.04 m<sup>2</sup>

AFFORDABLE TRANSPORTABLE HOMES

- This compact L-shaped modular packs a punch with two
- ample sized bedrooms, a separate office and open
- plan living area.

Included features:

- Two bedrooms
- One bathroom
- Kitchen and spacious dining room
- Premium accessories
- Electric hot water system





# NAMBUCA



\*Includes building approval & certification



LENGTH  
15.5 m

WIDTH  
14.26 m

TOTAL  
103.04 m<sup>2</sup>

AFFORDABLE TRANSPORTABLE HOMES

## GALLERY



BEDROOM



OFFICE



LIVING AREA



BATHROOM

# PINE



\*Includes building approval & certification



LENGTH  
9 m

WIDTH  
2.4 m

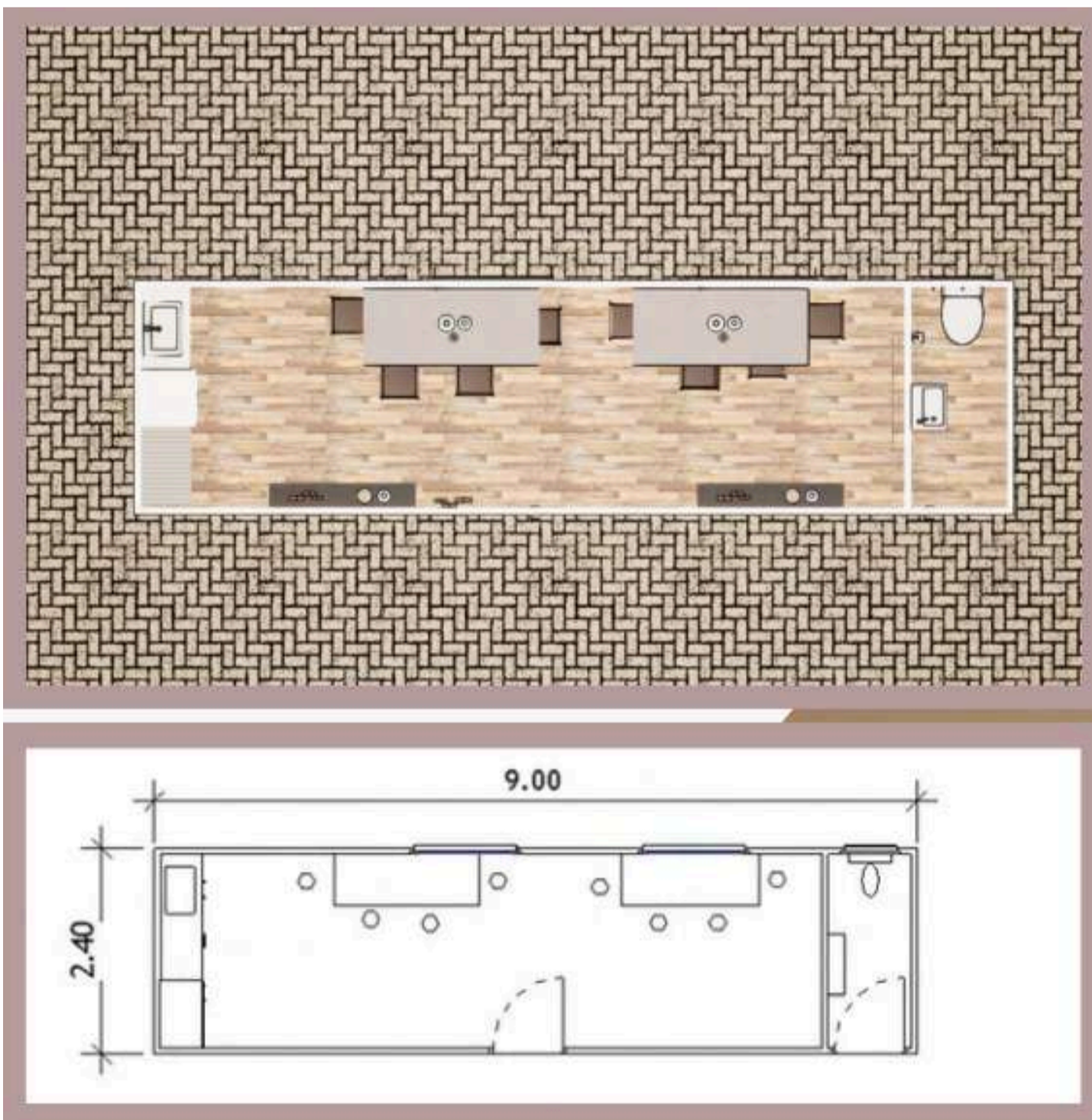
TOTAL  
21.6 m<sup>2</sup>

AFFORDABLE TRANSPORTABLE HOMES

There's plenty of room to dine in Pine. Pine comes with ample room for food preparation and dining furniture.

Included features:

- Spacious dining room
- One bathroom
- Premium accessories
- Electric hot water system



# SOPHIE



\*Includes building approval & certification



LENGTH  
17.62 m

WIDTH  
4 m

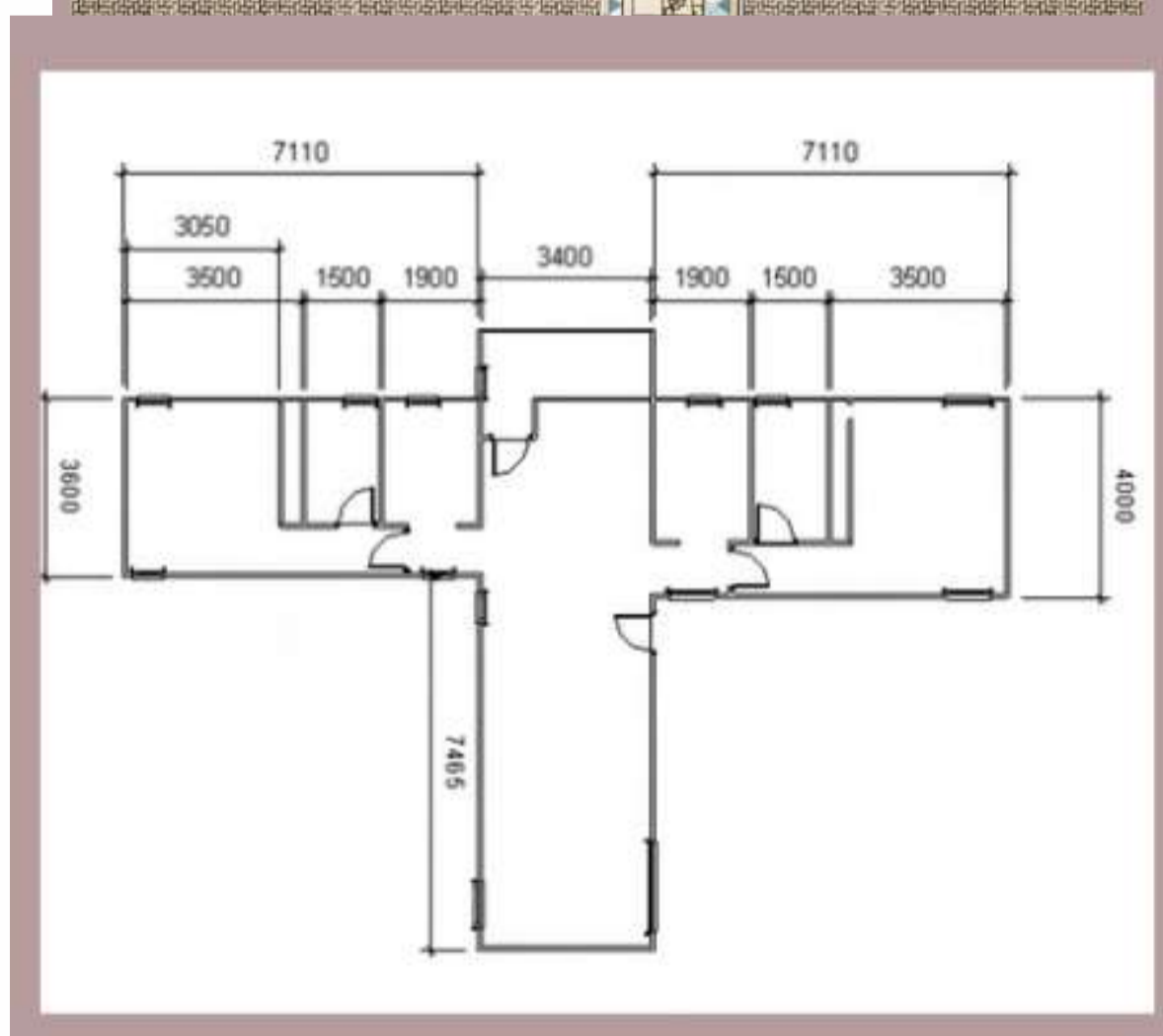
TOTAL  
95 m<sup>2</sup>

AFFORDABLE TRANSPORTABLE HOMES

Sophie's the perfect building if you're happy having your own space, but even happier socialising. The position of the kitchen and living area provides a central hub for you and the others in your house to hang out.

Included features:

- Two bedrooms ensuites
- Two offices room
- Central living area
- Kitchen storage
- Premium accessories
- Electric hot water system



# SOPHIE



\*Includes building approval & certification



LENGTH  
17.62 m

WIDTH  
4 m

TOTAL  
95 m<sup>2</sup>

AFFORDABLE TRANSPORTABLE HOMES

## GALLERY



BEDROOM



OFFICE



LIVING AREA



BATHROOM

# SPUR FLOWER



\*Includes building approval & certification



LENGTH  
4.8 m

WIDTH  
3 m

TOTAL  
14.4 m<sup>2</sup>

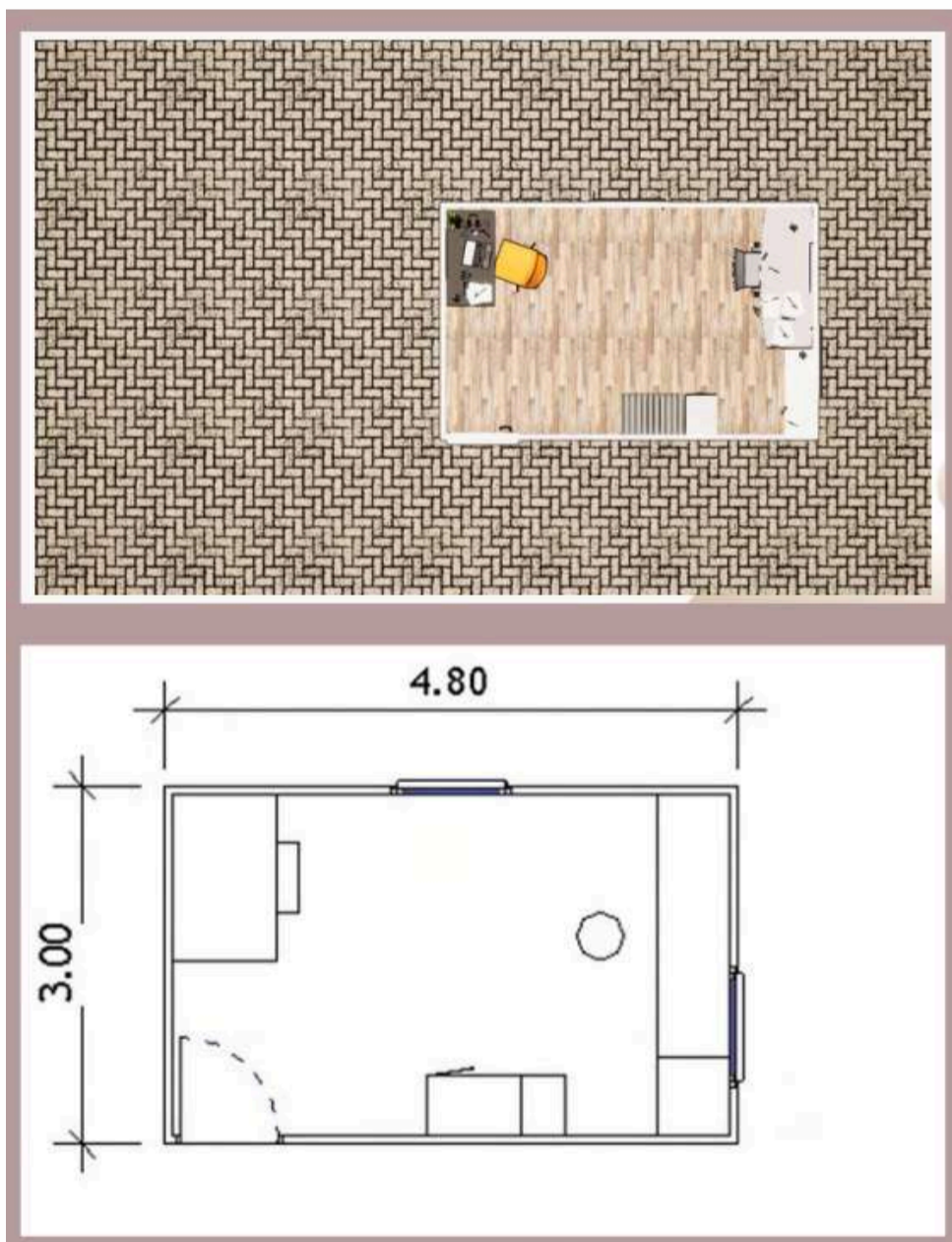
AFFORDABLE TRANSPORTABLE HOMES

- • • Blue Spires Spur Flower is a low growing, compact shrub with aromatic variegated foliage. It flowers from spring to autumn with strongly perfumed blue-purple flowers that attract bees and butterflies.

This project is another great mobile office option with enough room for two large desks and plenty of storage space.

Included features:

- Premium accessories
- Electric hot water system



# TREN STONE



\*Includes building approval & certification



LENGTH  
3.6 m

WIDTH  
2.4 m

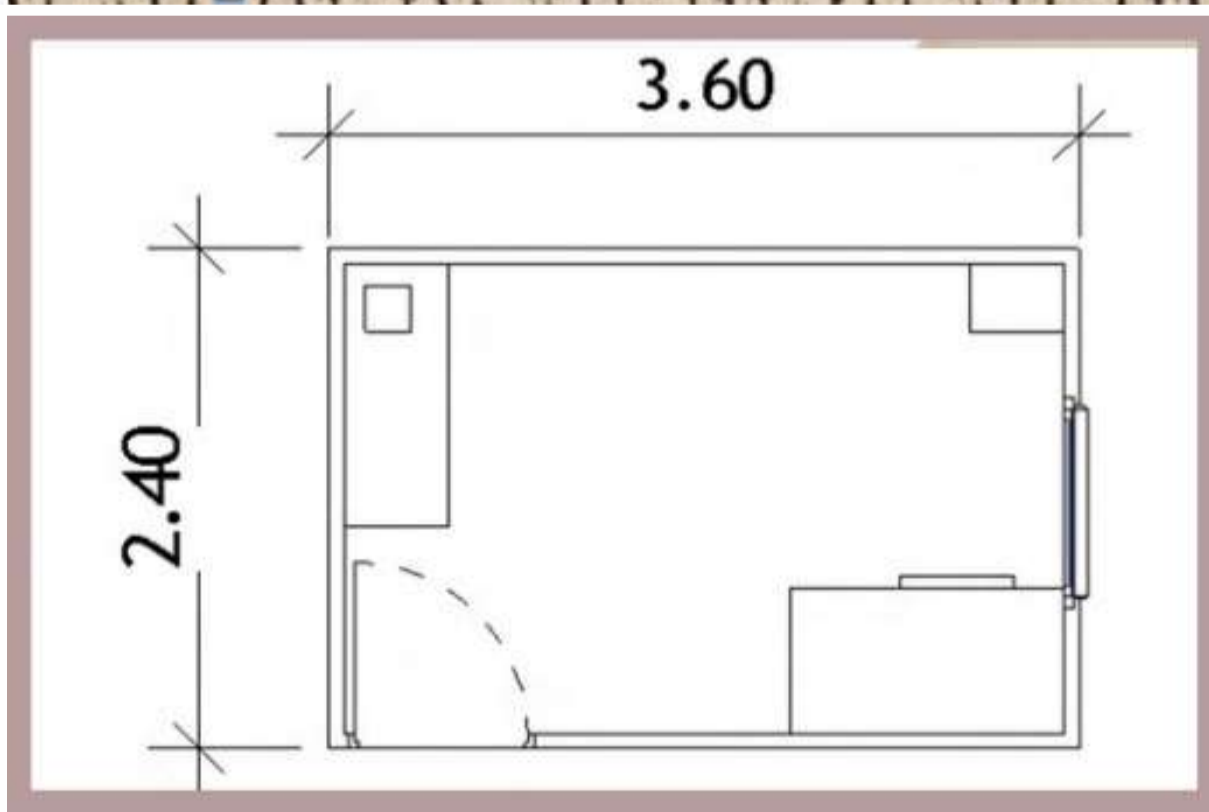
TOTAL  
8.64 m<sup>2</sup>

AFFORDABLE TRANSPORTABLE HOMES

A mobile office for one, complete with storage space and kitchenette facilities.

Included features:

- A spacious office room
- Kitchen and storage
- Premium accessories
- Electric hot water system



# WARATAH



\*Includes building approval & certification



LENGTH  
12 m

WIDTH  
3.84 m

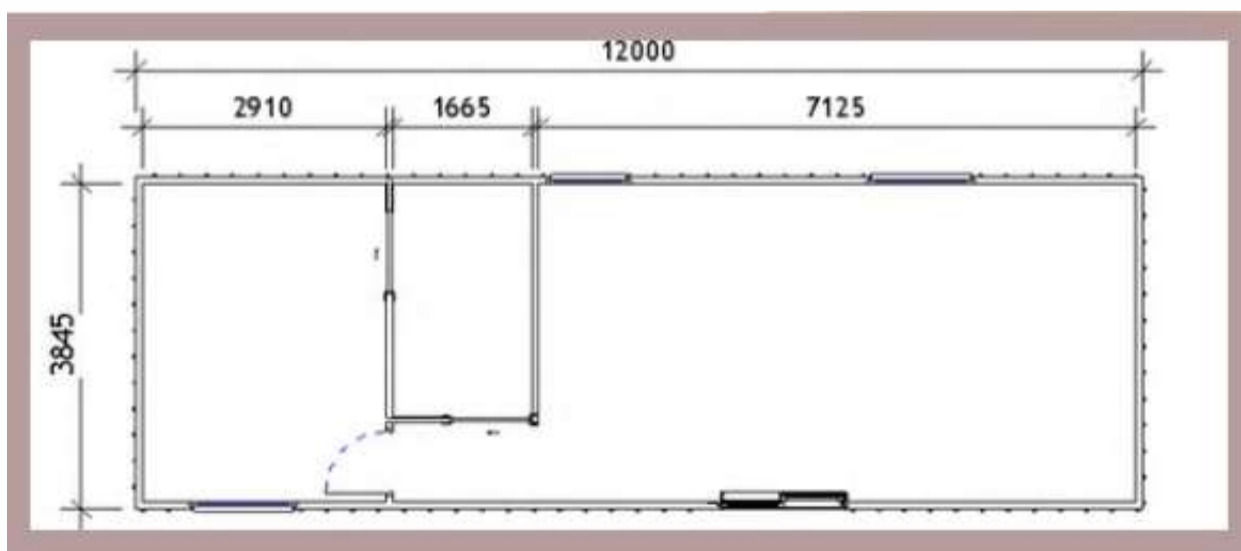
TOTAL  
46.14 m<sup>2</sup>

AFFORDABLE TRANSPORTABLE HOMES

Waratah is one of Australia's most iconic flowers, and while it comes in many different forms. Indeed, the large flowers are so striking, the New South Wales waratah is the state's floral emblem.

Included features:

- A spacious bedroom
- Living area
- One bathroom with ample space for laundry appliances.
- Premium accessories
- Electric hot water system



# WATTLE



\*Includes building approval & certification



LENGTH  
12 m

WIDTH  
3.9 m

TOTAL  
46.8 m<sup>2</sup>

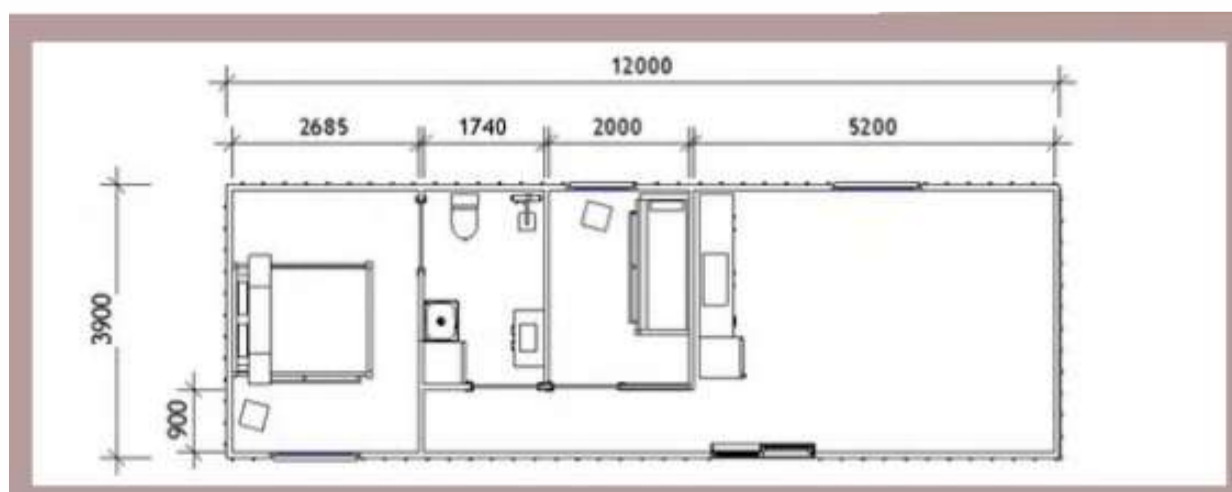
AFFORDABLE TRANSPORTABLE HOMES

- • • Wattle is the largest genus of vascular plants in Australia. In fact, Wattle Day is celebrated on the 1st of September each year.

This project has a similar layout to our Waratah option, with the added bonus of a small extra bedroom.

Included features:

- One big bedroom, and another small
- One bathroom
- Living and dining area
- Kitchen and storage
- Premium accessories
- Electric hot water system





# WATTLE



\*Includes building approval & certification



LENGTH  
12 m

WIDTH  
3.9 m

TOTAL  
46.8 m<sup>2</sup>

AFFORDABLE TRANSPORTABLE HOMES

## GALLERY



BEDROOM 1



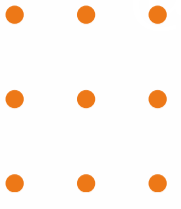
BEDROOM 2



BATHROOM



LIVING AREA



# Reach us for more information

**Contact Us**



+1800 411 805



[www.affordabletransportablehomes.com](http://www.affordabletransportablehomes.com)



[info@affordabletransportablehomes.com](mailto:info@affordabletransportablehomes.com)



9 Selhurst Street, Coopers Plains, QLD 4108

