



AFFORDABLE TRANSPORTABLE HOMES



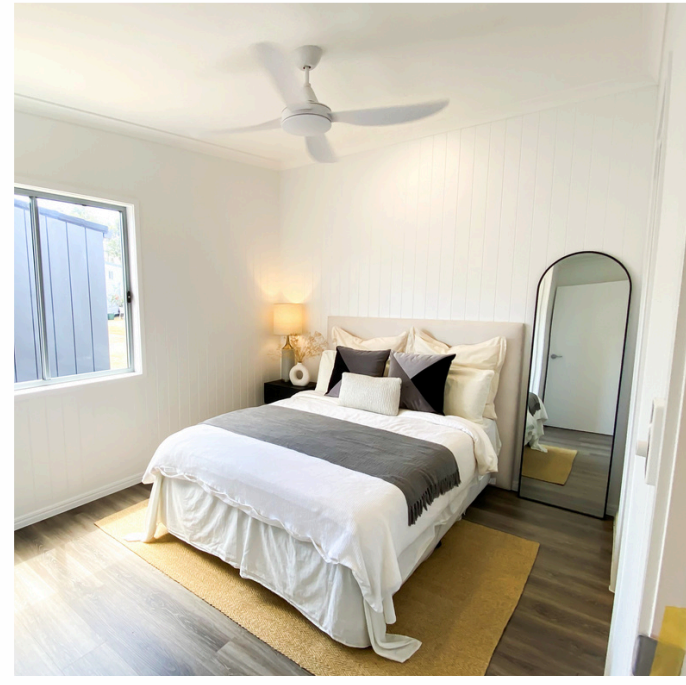
AFFORDABLE TRANSPORTABLE HOMES

LEADING SPECIALISTS IN
MODULAR HOMES

- Consultation
- Design
- Renovation
- Maintenance

+ 1800 411 805
1171 Boundary Rd , Wacol QLD 4076
affordabletransportablehomes.com





WELCOME TO

AFFORDABLE TRANSPORTABLE HOMES

Your new go-to provider of world-class modular dwellings.

Affordable Transportable Homes provides the highest level of quality service to create a modular building that meets your needs.

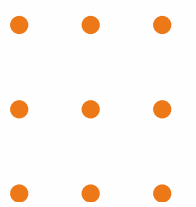
Modular homes are built with efficiency, sustainability, and personalized design in mind, making them a modern and eco-friendly living solution.

Each of our dwellings have been designed and built with quality and comfort front of mind, at an accessible price point.

When we say we're affordable, we really mean it. Our decades of experience in the industry mean we work closely with the very best material suppliers who provide us with the best quality for less.

This information brochure showcases our current offerings and how we'll work with you to deliver your project seamlessly.

Our services: Modular homes, Granny Flats, Offices, Inclusive Spaces, Custom Built, Decks-Pergolas, and Turnkey Solutions



BUILD YOUR
DREAM MODULAR
HOME

ACACIA



*Includes building approval & certification



LENGTH
10 m

WIDTH
3.96 m

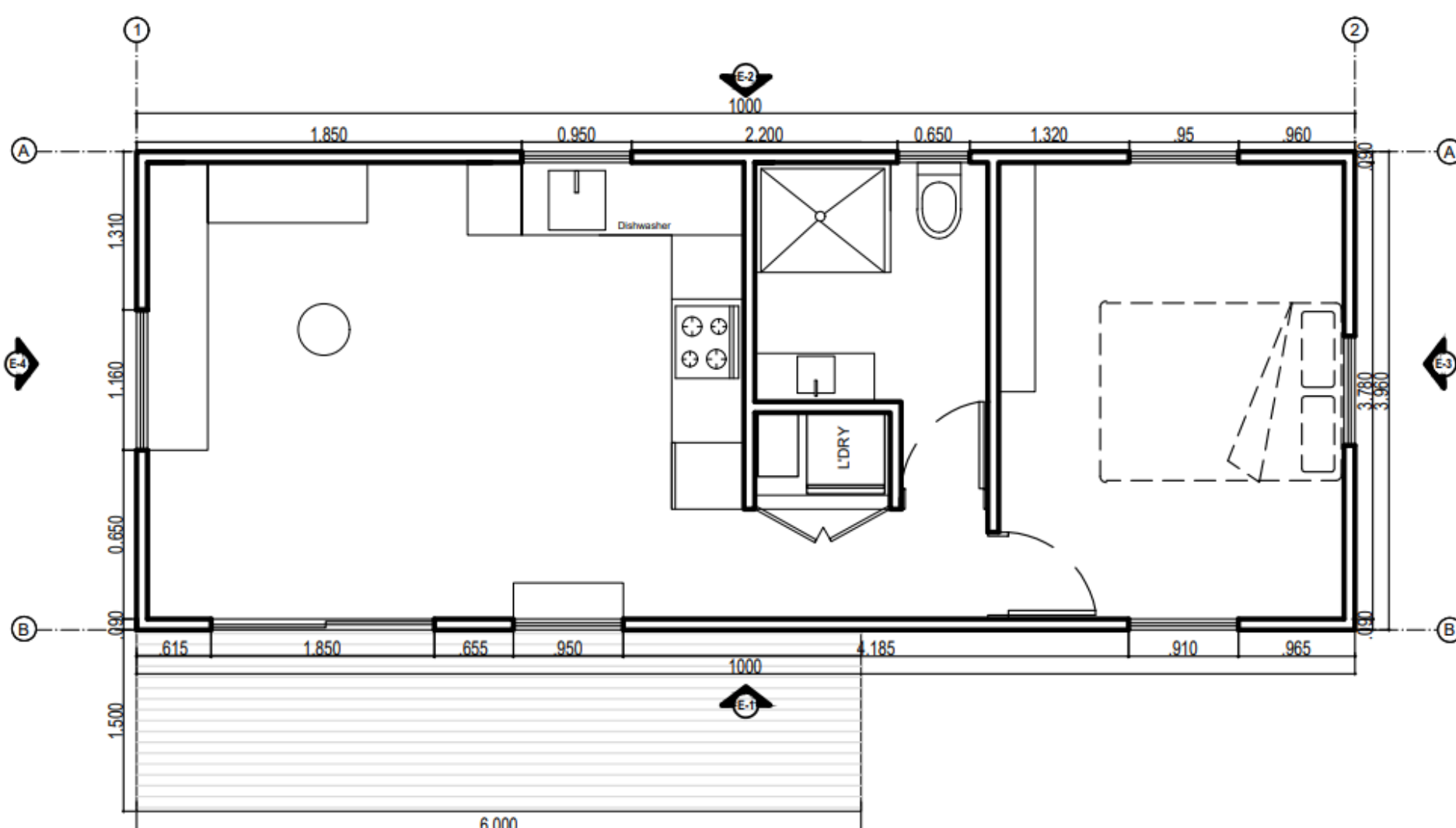
TOTAL
39.6 m²

AFFORDABLE TRANSPORTABLE HOMES

There are over 1,200 species of Acacia and they are found growing naturally in all Australian states and even overseas. In Australia they are known as 'wattles' and the golden wattle, *Acacia pycnantha*, is Australia's floral emblem.

Included features:

- One bedroom
- One bathroom
- Premium accessories
- Kitchen and storage
- Room for laundry
- Living room
- Glass doors and windows
- Electric hot water system



ACACIA



*Includes building approval & certification



LENGTH
10 m

WIDTH
3.96 m

TOTAL
39.6 m²

AFFORDABLE TRANSPORTABLE HOMES

GALLERY



BANKSIA



1



2

*Includes building approval & certification



LENGTH
12 m

WIDTH
3.85 m

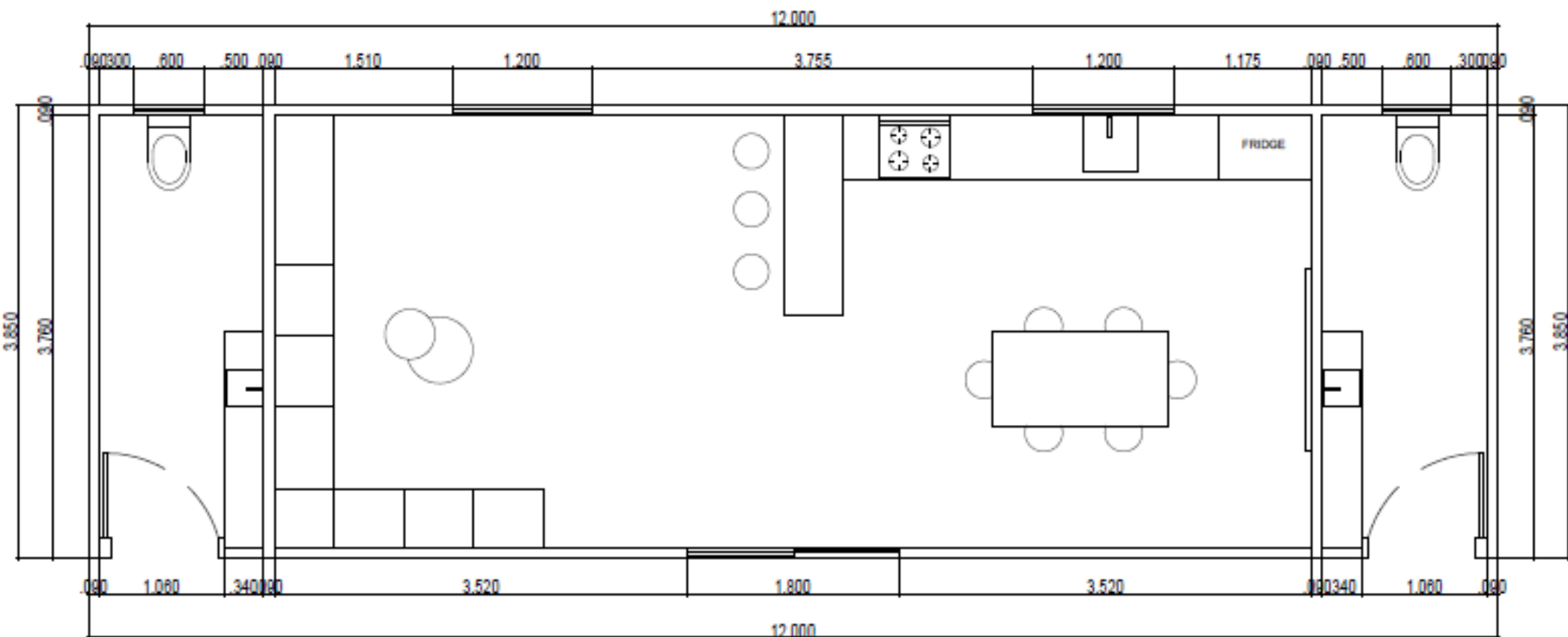
TOTAL
46.2 m²

AFFORDABLE TRANSPORTABLE HOMES

If you're in need of a dining or office space, Banksia is the perfect choice. Enjoy a spacious open plan area with plenty of room for the furniture you need to deck out your space. Complete with a kitchenette and two toilets, Banksia gives you everything you need in a multipurpose space.

Included features:

- Two bathrooms
- A spacious living room
- Kitchen and storage
- Premium accessories
- Electric hot water system



BANKSIA



1



2

*Includes building approval & certification



LENGTH
12 m

WIDTH
3.85 m

TOTAL
46.2 m²

AFFORDABLE TRANSPORTABLE HOMES

GALLERY



BAUERA



1



1



*Includes building approval & certification

LENGTH
3.96 m

WIDTH
10 m

TOTAL
39.6 m²

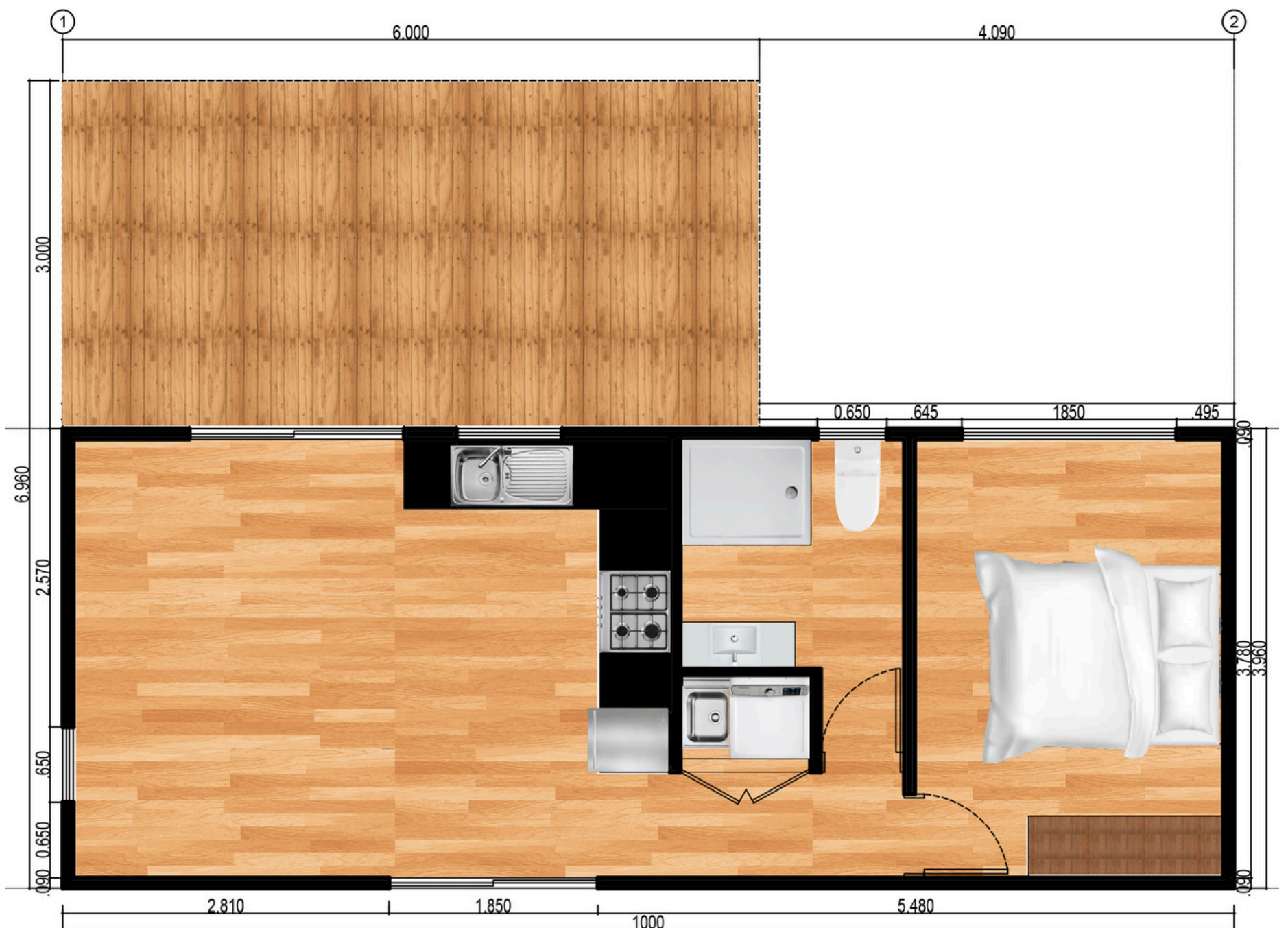
AFFORDABLE TRANSPORTABLE HOMES

with deck 6.96 m x 10m

This is one of those extremely useful Australian native shrubs that grows well in moist soils and also flowers well in shady spots. Bauera is commonly found growing along shady creek banks in eastern Australia where it forms a low growing habit that is dotted with delicate pink flowers sporadically through the year.

Included features:

- One bedroom
- One bathrom
- Room for laundry
- Premium accessories
- Kitchen and storage
- A large additional room
- Electric hot water system



BORONIA



*Includes building approval & certification



LENGTH
15 m

WIDTH
4 m

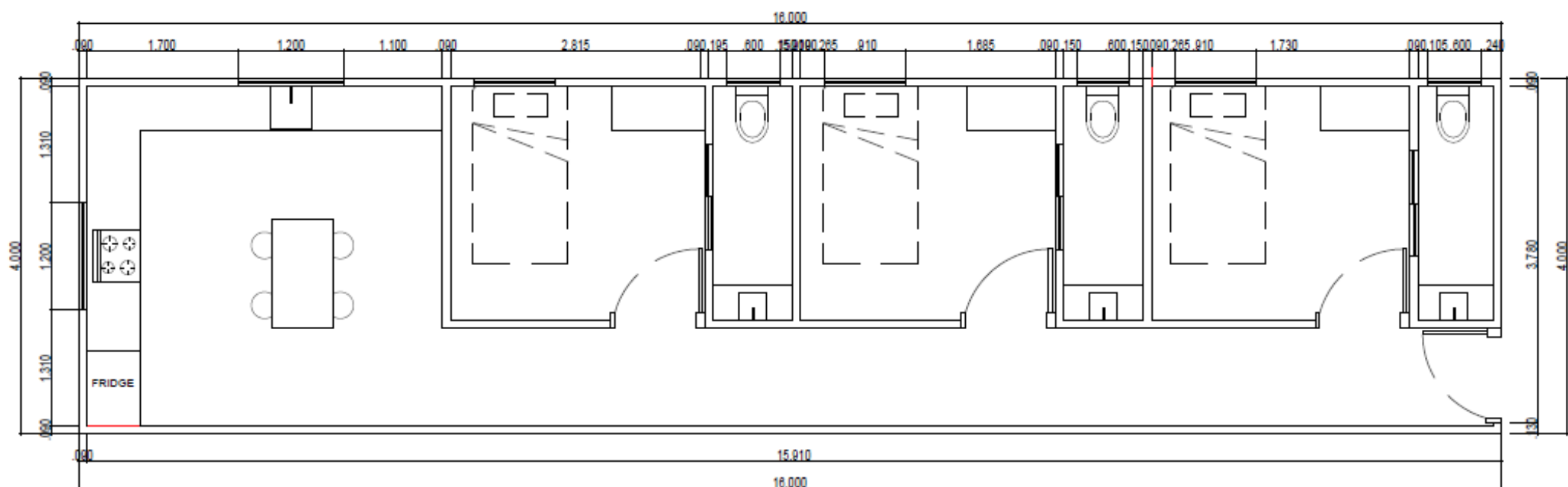
TOTAL
60 m²

AFFORDABLE TRANSPORTABLE HOMES

Boronias are delightful flowering plants native to Australia. Belonging to the citrus Rutaceae family, they are renowned for their exquisite, fragrant blossoms and striking foliage. Cherished by garden enthusiasts for their vibrant colours and sweet enticing scent, Boronias are commonly used in ornamental horticulture.

Included features:

- Three sized bedrooms with individual toilets
- Premium accessories
- Kitchen and storage
- Dining room
- Electric hot water system



BORONIA

 3  3

*Includes building approval & certification



LENGTH
15 m

WIDTH
4 m

TOTAL
60 m²

AFFORDABLE TRANSPORTABLE HOMES

GALLERY



MULTIPURPOSE SPACE



BATHROOM

BOTTLE BRUSH



*Includes building approval & certification



LENGTH
15 m

WIDTH
3.64 m

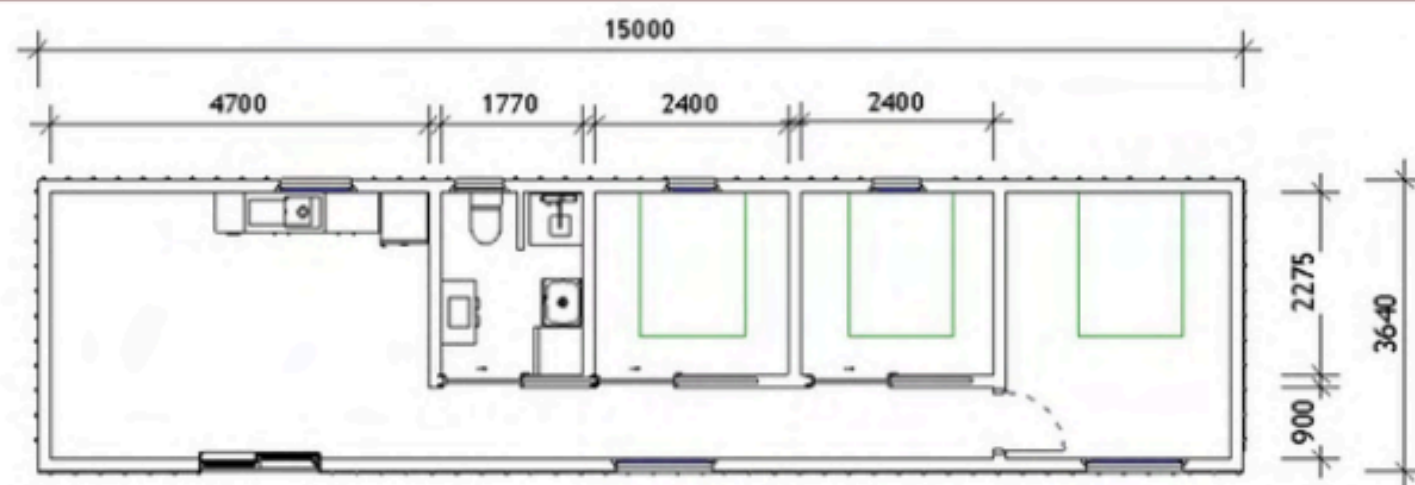
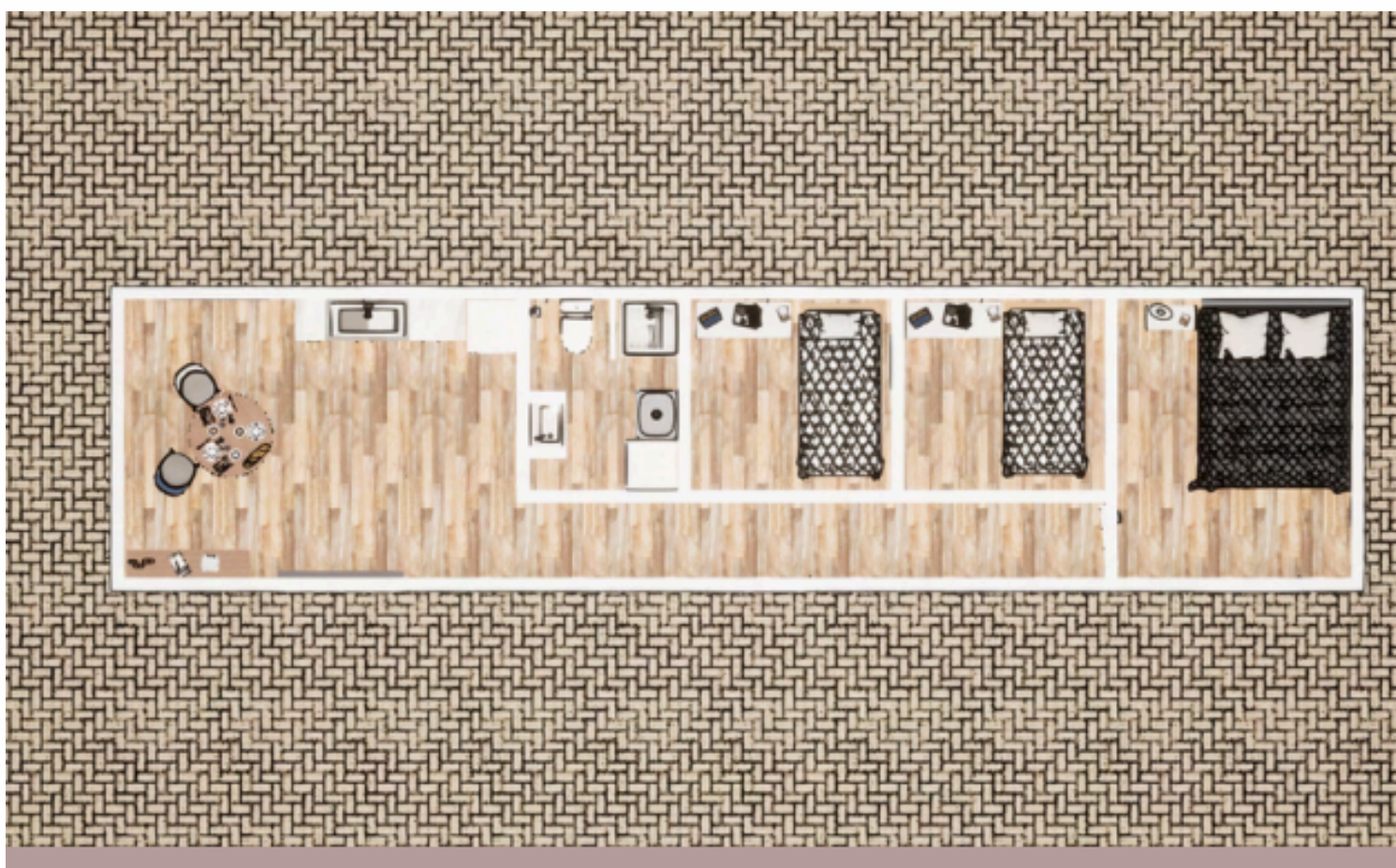
TOTAL
54.6 m²

AFFORDABLE TRANSPORTABLE HOMES

- • • Maximise the space on your site with our Bottle Brush dormitories. Each dormitory has three private bedrooms, a shared bathroom and combined living and kitchen area. The bathroom is spacious enough to allow for a washing machine and dryer, saving you from building separate facilities.

Included features:

- Three sized bedrooms
- One shared room for the bathroom and laundry
- Premium accessories
- Kitchen and storage
- Dining room
- Electric hot water system



BOTTLE BRUSH



*Includes building approval & certification



AFFORDABLE TRANSPORTABLE HOMES

LENGTH
15 m

WIDTH
3.64 m

TOTAL
54.6 m²

GALLERY



BATHROOM



MASTER BEDROOM



BEDROOM



DINING + KITCHEN

CREVILLEA



*Includes building approval & certification



LENGTH
11.7 m

WIDTH
4.2 m

TOTAL
49.14 m²

AFFORDABLE TRANSPORTABLE HOMES

GALLERY



BATHROOM



MASTER BEDROOM



BEDROOM



DINING + KITCHEN

DESERT HOME



*Includes building approval & certification



LENGTH
10.98 m

WIDTH
4.2 m

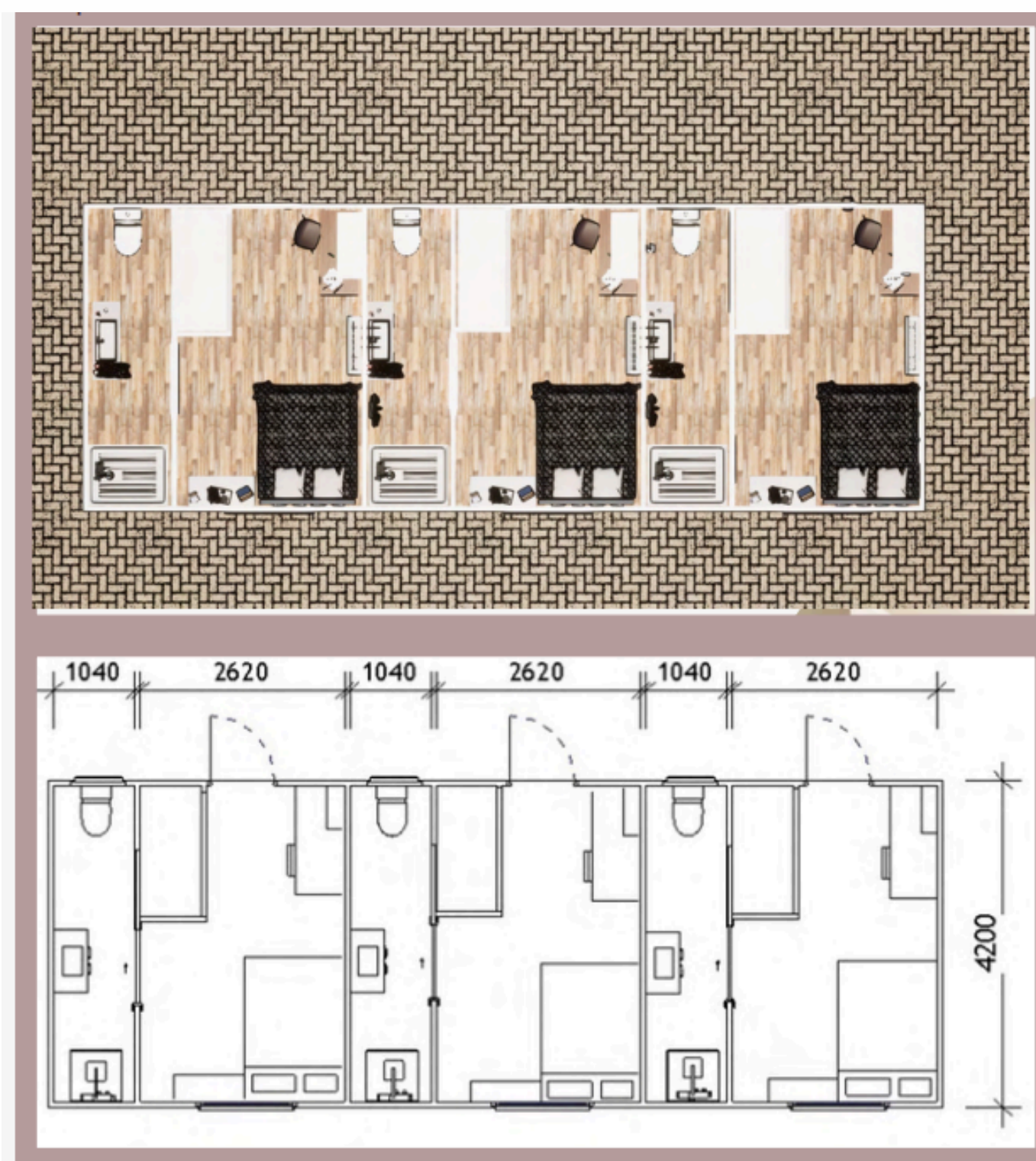
TOTAL
46.12 m²

AFFORDABLE TRANSPORTABLE HOMES

If you're looking for sleeping quarters, our desert homes are the perfect solution. Each home has three bedrooms complete with a private entrance and their own compact shower and toilet, ensuring privacy without compromising on space.

Included features:

- Three sized bedrooms with individual toilets
- Premium accessories
- Electric hot water system



DESERT HOME

 3  3

*Includes building approval & certification



LENGTH
10.98 m

WIDTH
4.2 m

TOTAL
46.12 m²

AFFORDABLE TRANSPORTABLE HOMES

GALLERY



BEDROOM



BATHROOM

DIANELLA



2



2

*Includes building approval & certification



LENGTH
12 m

WIDTH
2.4 m

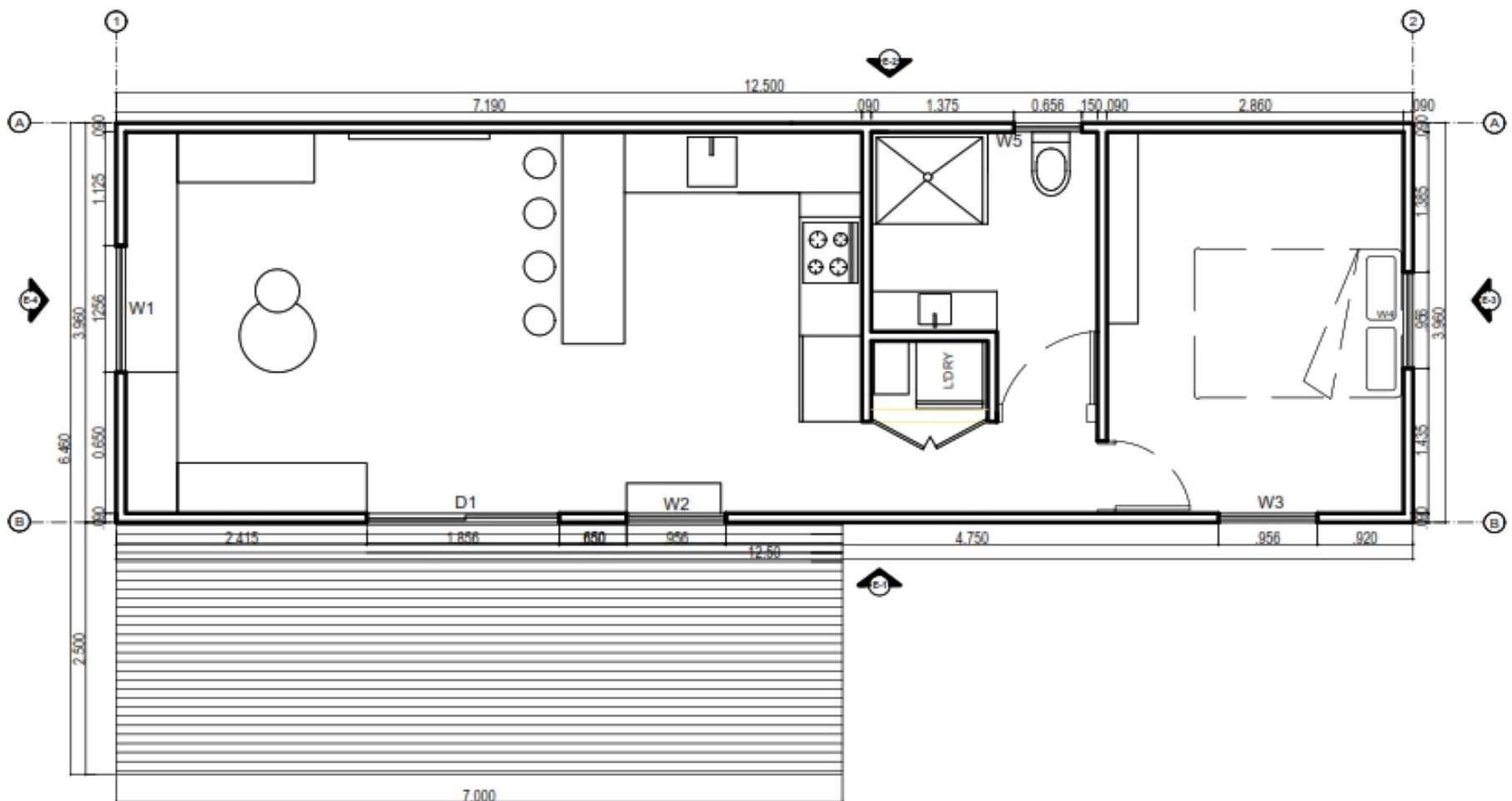
TOTAL
28.8 m²

AFFORDABLE TRANSPORTABLE HOMES

- • • Need to squeeze in a dining area but are a bit tight on space? Our Dianella option is a slimline building with enough room for tables, kitchenette facilities and two bathrooms.

Included features:

- One kitchen and storage
- One room
- One bathroom
- Premium accessories
- Electric hot water system



DRIGGER



*Includes building approval & certification



LENGTH
8 m

WIDTH
11.6 m

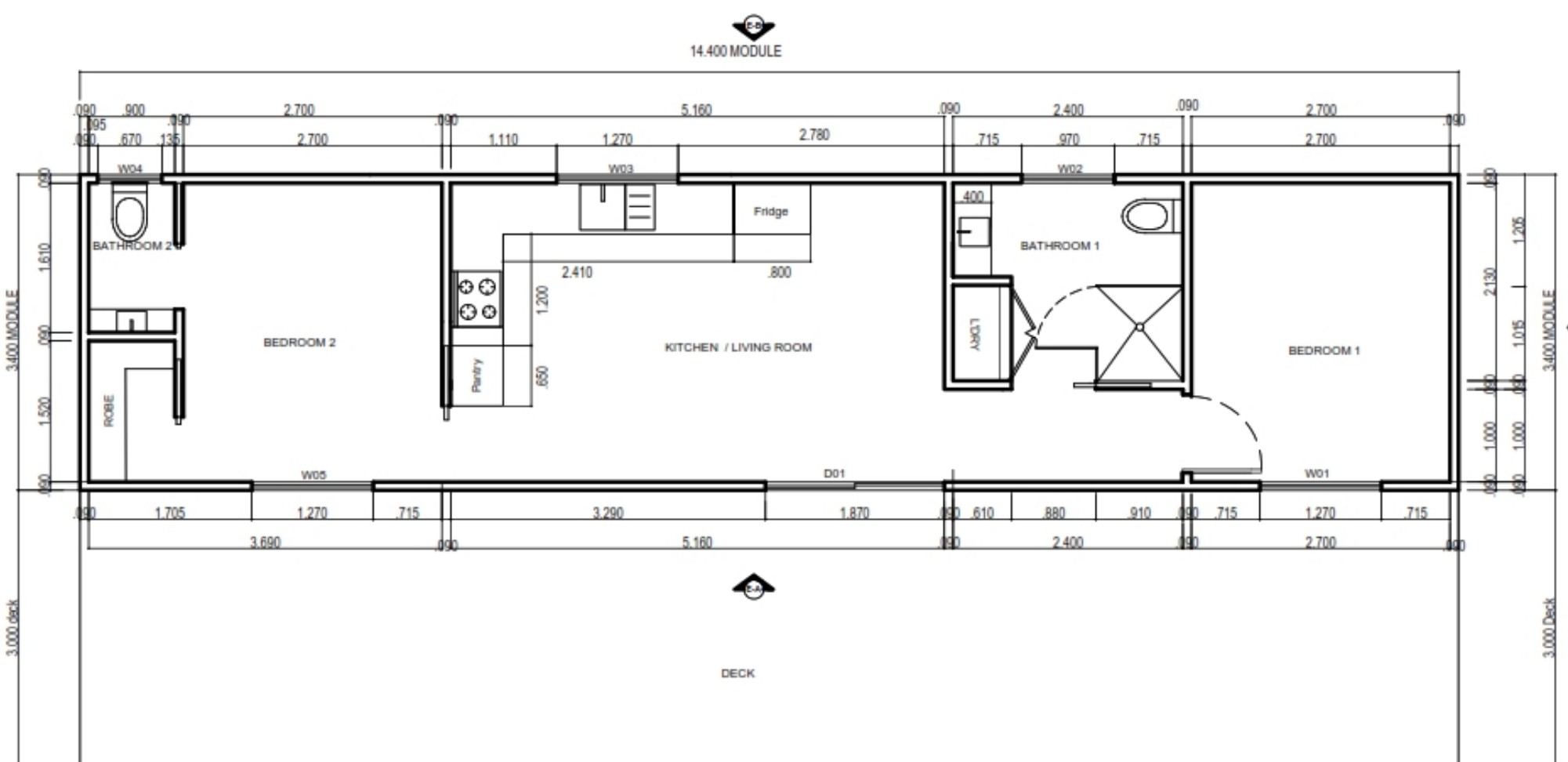
TOTAL
92.8 m²

AFFORDABLE TRANSPORTABLE HOMES

With two generously sized bedrooms and bathrooms, a study and a kitchen that flows into the large living area, Drigger is the complete package!

Included features:

- Two bedrooms
- Two bathrooms, one of them shared with the laundry
- Living room and
- Kitchen and a dining room
- Premium accessories
- Electric hot water system



EUCALYPTUS



*Includes building approval & certification



LENGTH
9.42 m

WIDTH
4.2 m

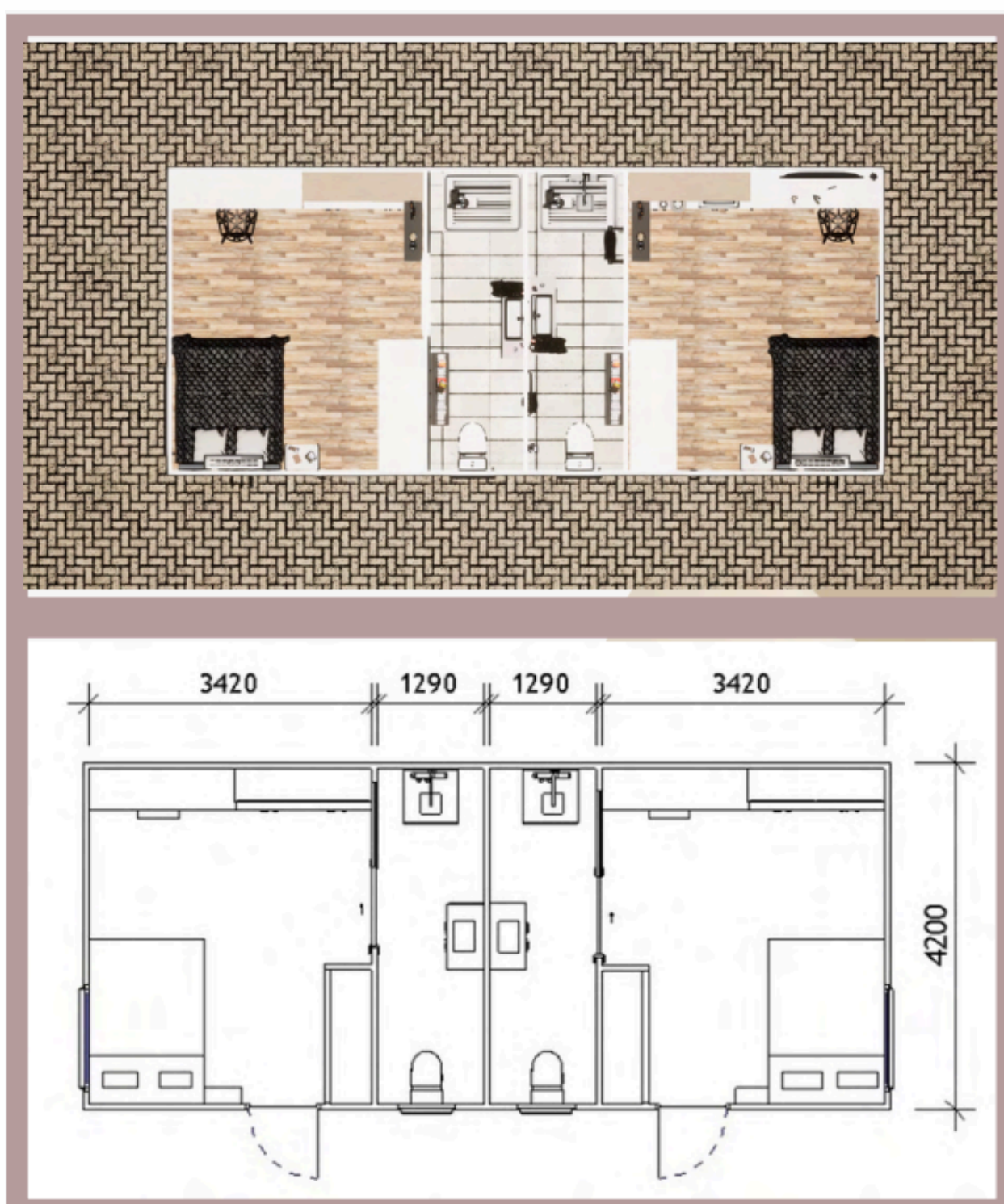
TOTAL
40 m²

AFFORDABLE TRANSPORTABLE HOMES

Eucalypts are iconic Australian forest trees. The Eucalyptus forest type is by far the most common forest type in Australia covering 101 million hectares, which is 77% of Australia's total native forest area.

Included features:

- Two large bedrooms and ensuites, with a built-in wardrobe
- Bench tops for food preparation and enough room for a desk and couch
- Two bathrooms
- Premium accessories
- Electric hot water system



EUCALYPTUS



*Includes building approval & certification



LENGTH
9.42 m

WIDTH
4.2 m

TOTAL
40 m²

AFFORDABLE TRANSPORTABLE HOMES

GALLERY



BEDROOM



BATHROOM

KANGAROO PAW



*Includes building approval & certification



AFFORDABLE TRANSPORTABLE HOMES

LENGTH
9.24 m

WIDTH
4.2 m

TOTAL
38.8 m²

GALLERY



KITCHEN



BATHROOM



LIVING AREA



BEDROOM

LILLY PILLY



*Includes building approval & certification



LENGTH
9.7 m

WIDTH
3.4 m

TOTAL
33 m²

AFFORDABLE TRANSPORTABLE HOMES

Lilly Pilly is the perfect retreat. Don't let its slimline design fool you - you'll love the large bedroom, spacious living area and kitchen.

Included features:

- One bedroom
- One bathroom
- Kitchen and storage
- Dining room
- Premium accessories
- Electric hot water system



LILLY PILLY



*Includes building approval & certification



LENGTH
9.7 m

WIDTH
3.4 m

TOTAL
33 m²

AFFORDABLE TRANSPORTABLE HOMES

GALLERY



LIVING AREA



BEDROOM

PINE



*Includes building approval & certification



LENGTH
9 m

WIDTH
2.4 m

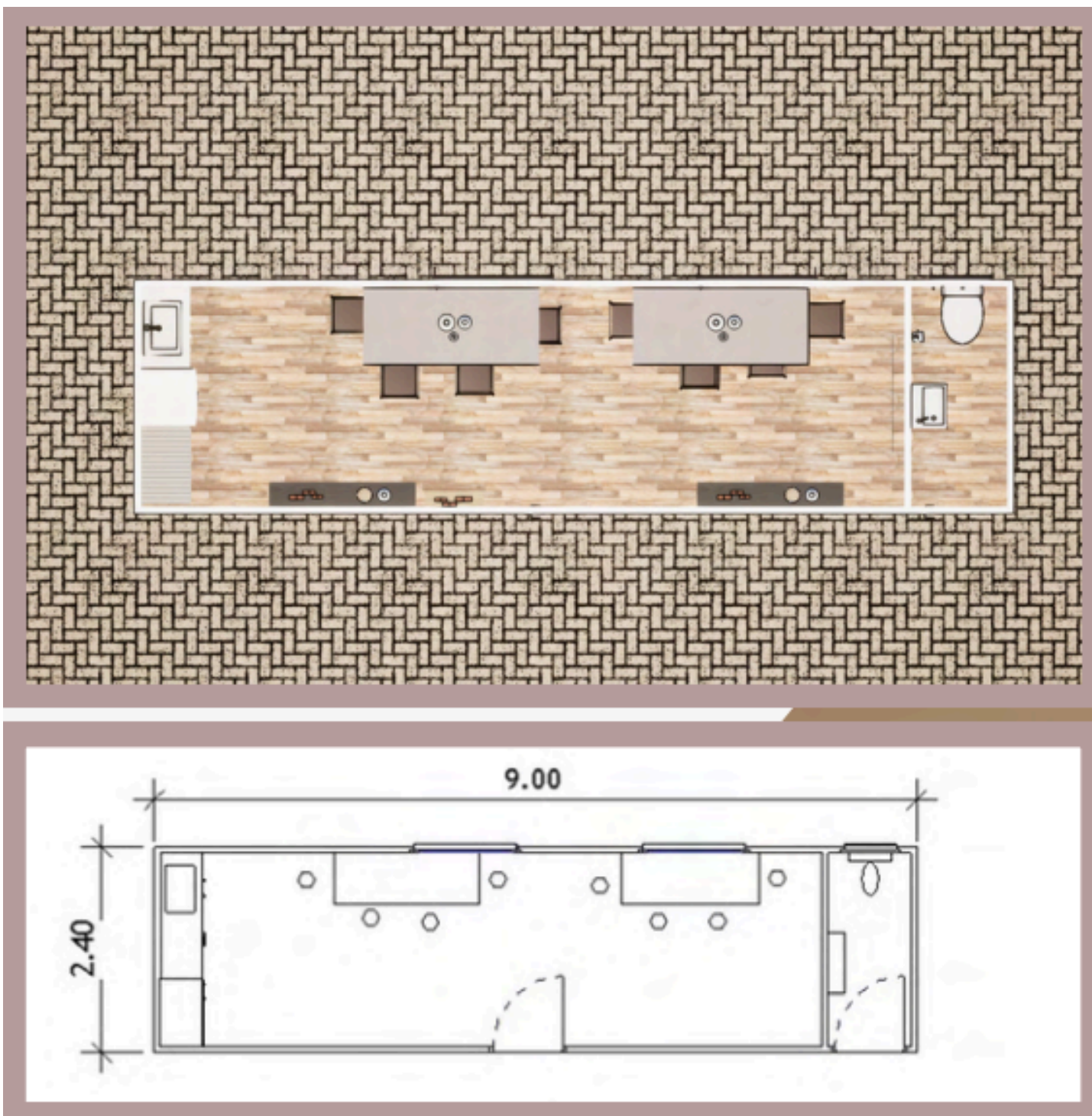
TOTAL
21.6 m²

AFFORDABLE TRANSPORTABLE HOMES

There's plenty of room to dine in Pine. Pine comes with ample room for food preparation and dining furniture.

Included features:

- Spacious dining room
- One bathroom
- Premium accessories
- Electric hot water system



WARATAH



*Includes building approval & certification



LENGTH
12 m

WIDTH
3.84 m

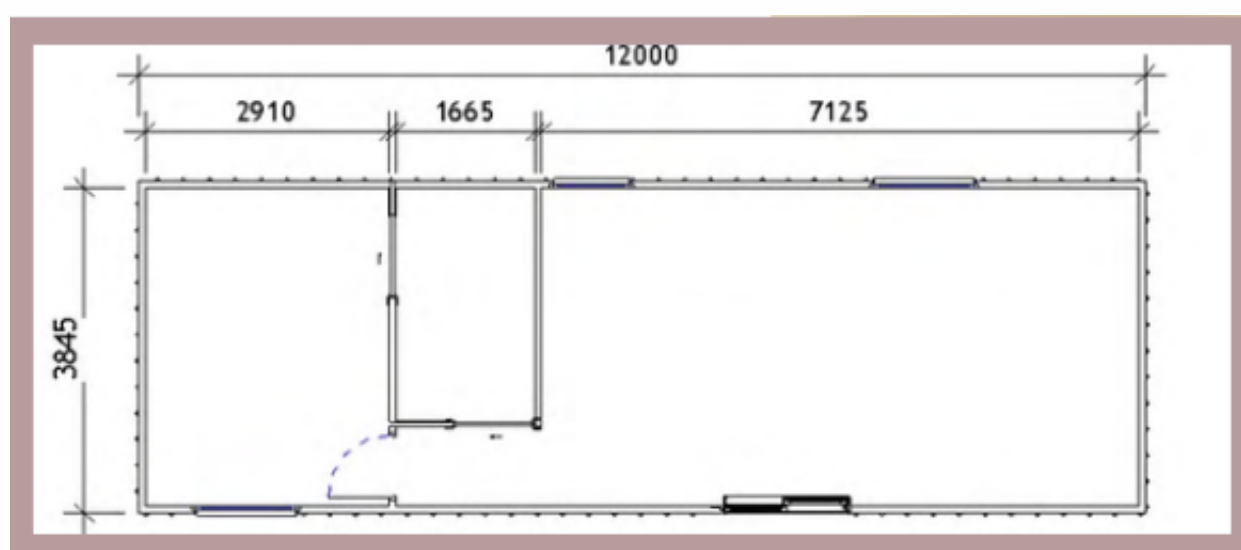
TOTAL
46.14 m²

AFFORDABLE TRANSPORTABLE HOMES

Waratah is one of Australia's most iconic flowers, and while it comes in many different forms. Indeed, the large flowers are so striking, the New South Wales waratah is the state's floral emblem.

Included features:

- A spacious bedroom
- Living area
- One bathroom with ample space for laundry appliances.
- Premium accessories
- Electric hot water system



WATTLE



*Includes building approval & certification



LENGTH
12 m

WIDTH
3.9 m

TOTAL
46.8 m²

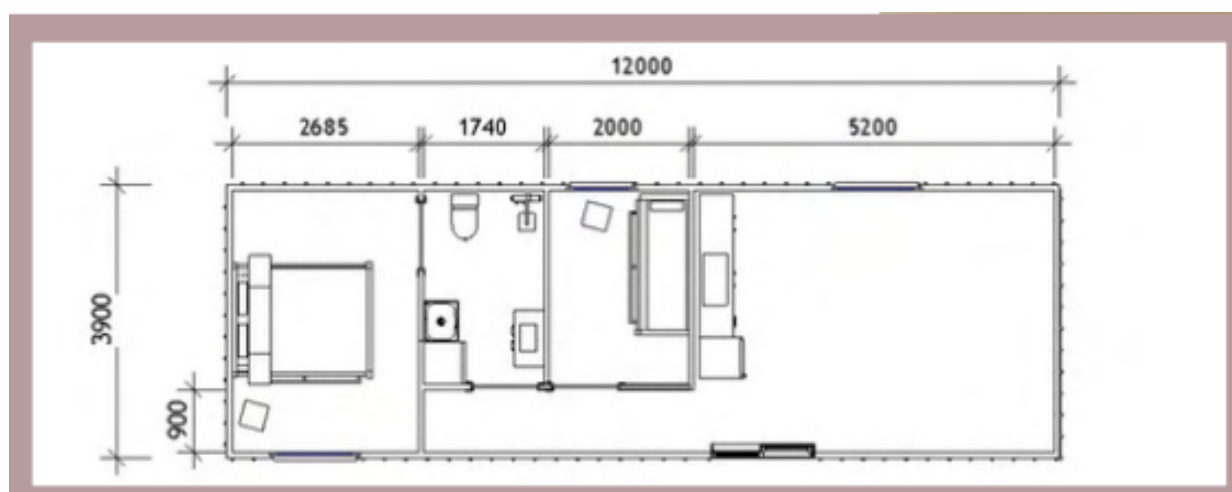
AFFORDABLE TRANSPORTABLE HOMES

- • • Wattle is the largest genus of vascular plants in Australia. In fact, Wattle Day is celebrated on the 1st of September each year.

This project has a similar layout to our Waratah option, with the added bonus of a small extra bedroom.

Included features:

- One big bedroom, and another small
- One bathroom
- Living and dining area
- Kitchen and storage
- Premium accessories
- Electric hot water system



WATTLE



*Includes building approval & certification



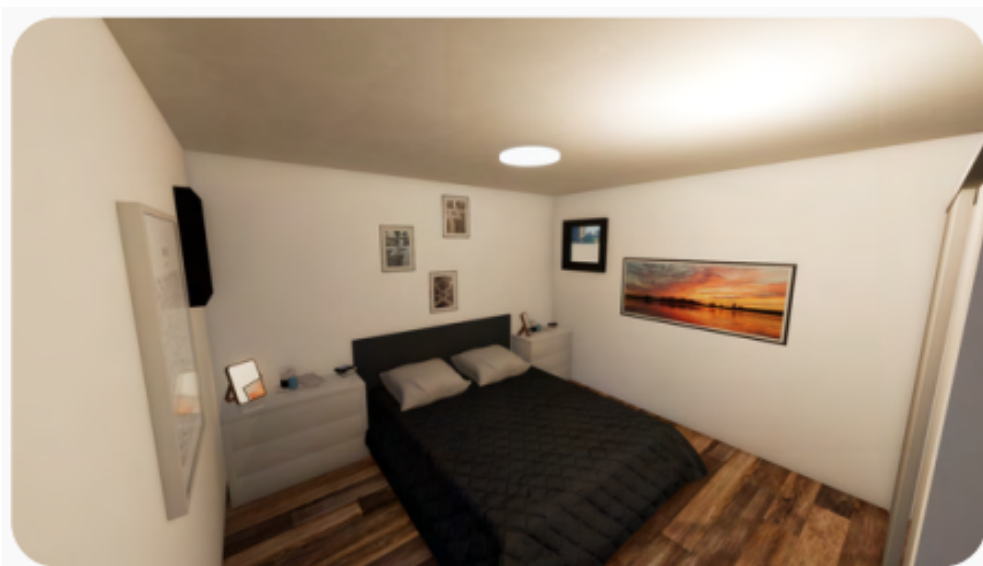
AFFORDABLE TRANSPORTABLE HOMES

LENGTH
12 m

WIDTH
3.9 m

TOTAL
46.8 m²

GALLERY



BEDROOM 1



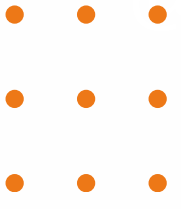
BEDROOM 2



BATHROOM



LIVING AREA



Reach us for more information

Contact Us



+1800 411 805



www.affordabletransportablehomes.com



info@affordabletransportablehomes.com



1171 Boundary Rd, Wacol QLD 4076

