



DEB KEMP



REALTY

2676 NW Overton St, Portland, OR 97210

Welcome to 2676 NW Overton, a stunning Colonial Craftsman nestled in the prestigious Nob Hill neighborhood offering peace, tranquility and breathtaking views of five mountains, all mere moments from the vibrant heart of Portland.

In 1912, amidst the backdrop of a blossoming Portland, newlyweds Mr. and Mrs. C Edward stepped into their new home. With its harmonious proportions and exquisite architectural details, the house bore the mark of a master's hand, likely belonging to the renowned Earl A Roberts, whose designs graced the nearby streets. Adjacent to their abode stood the grandeur of Mrs Edward nee Grelle's parents "palatial residence," a testament to opulence and prestige. It is thought that 2676 NW Overton was a wedding gift, and that both homes were crafted by the same skilled hands of Earl A Roberts, that shaped the neighborhood's skyline.

Through the years, the house witnessed the passage of time with grace, its walls standing witness to the changing tides of history. From the bustling streets of the roaring twenties to the quiet whispers of the modern age, the essence of Nob Hill flowed through its veins like a timeless melody. As the decades unfurled, only two custodians graced its halls since 1978, each leaving their mark upon its storied facade.





In recent years, with the guidance of Arciform Architects, the home underwent a transformative journey, melding the whispers of yesteryears with the innovations of today. With meticulous care and dedication, over \$400,000 was invested in its restoration, breathing new life into its aging bones while honoring its rich heritage. The updates were as grand as they were subtle, from the gleaming new kitchen to the structural reinforcements that bolstered its foundation. Yet, amidst the modern amenities and refined appointments, the soul of the house remained untouched.

Outside its doors, the neighborhood thrives. From the captivating annual Vaux Swift watch event to the trendy boutiques, cozy cafes, and artisanal eateries that dot NW 23rd Avenue – where locals and visitors alike gather to explore its eclectic mix of shops and restaurants. With its leafy tree-lined streets and proximity to Forest Park and its expansive network of trails, Nob Hill offers a delightful blend of urban living and natural beauty, making it a beloved destination for residents seeking a taste of Portland's vibrant culture and scenic landscapes.

2676 NW Overton stands as a testament to the enduring spirit of Portland. A beacon of history, a haven of elegance, and a cherished piece of the city's soul, it remains a place where the past meets the present, and where dreams find their home.



































































































6,140 sq ft

5 bedrooms

3 full bathrooms

2 half bathrooms

0.17 acre lot

Double car garage

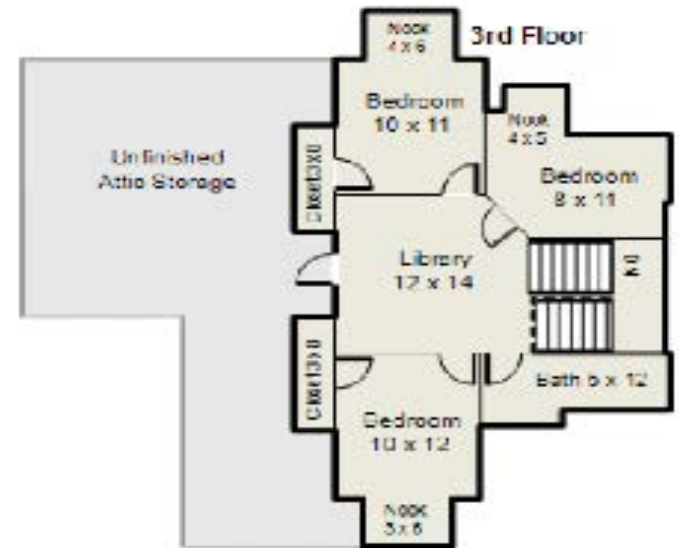
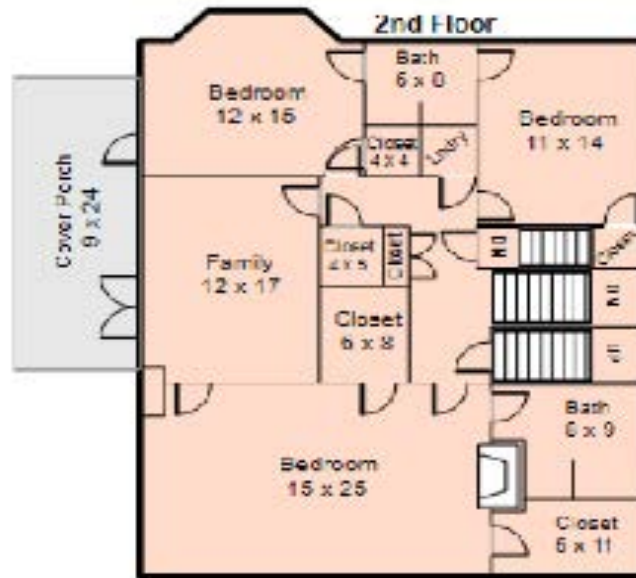
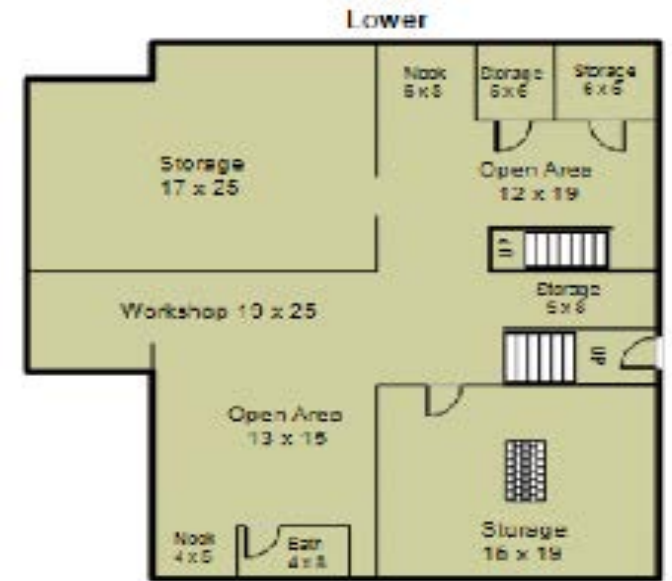
Annual taxes (2023):
\$20,913

MLS#: 24310919

Elementary school:
Chapman

Middle school: West
Sylvan

High school: Lincoln



Main	1874 Sq. Ft.
Lower	1621 Sq. Ft.
2nd Floor	1670 Sq. Ft.
3rd Floor	817 Sq. Ft.
Total Area	6140 Sq. Ft.

Covered Patio	217 Sq. Ft.
Unfinished Attic	627 Sq. Ft.



DEB
KEMP

REALTY 