

LUXIRA

1800W 808nm Diode Laser Hair Removal Machine



Super high
power



Super large
spot size



Super short
pulse duration



Super FAC
Technology



Super
Cooling



G₂I

Product Display



Handpiece With Touch Screen

12inch Big Screen

Holder

Emergency Button

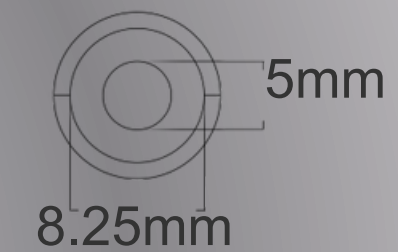
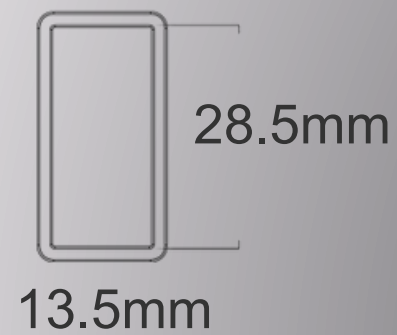
Switch Button

High-End Hollow Silent Wheel



○ *Treatment Head Advantage*

Different spot sizes head working on one handle. More Choices for different body area.



G₂I

Unlimited shots

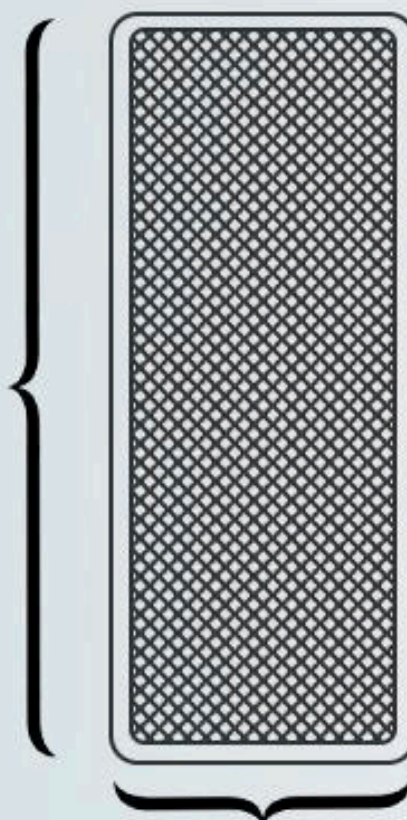
○ *Treatment Head*

Super laser spot size

28.5*13.5mm ○ →

Maximum power combined with the shortest pulses

28.5mm



13.5mm



40% faster!

Q₂₁

○ **Treatment Site**

G₂I

Face: 12.5*14.5mm or Round 8.25mm

Forehead: 12.5*14.5mm

Nose Hair: Round 8.25mm

Mustache: 12.5*14.5mm

Chest: 13.5*28.5mm

Armpit: 12.5*14.5mm

Arms: 13.5*28.5mm

Back: 13.5*28.5mm

Bikini Line: 12.5*14.5mm

Leg: 13.5*28.5mm

Three Interchangeable Treatment Heads

- **Small Precision Head** – Ideal for delicate areas like the face, underarms, or bikini line.
- **Medium Head** – Designed for mid-sized zones such as arms, neck, or lower legs.
- **Large Head** – Covers large areas like the back, thighs, and full legs—faster than ever.



○ ***Handpiece Advantages***

- Super high power-1800W handpiece
- Super large spot size
- Maximum power combined with the shortest pulses
- Handpieces with 360° contact cooling : -20 degree
- Touch screen on head for easy operation.
- Original American Coherent Laser Bars

Max. 1800W

POWER

5-100ms

PULSE DURATION

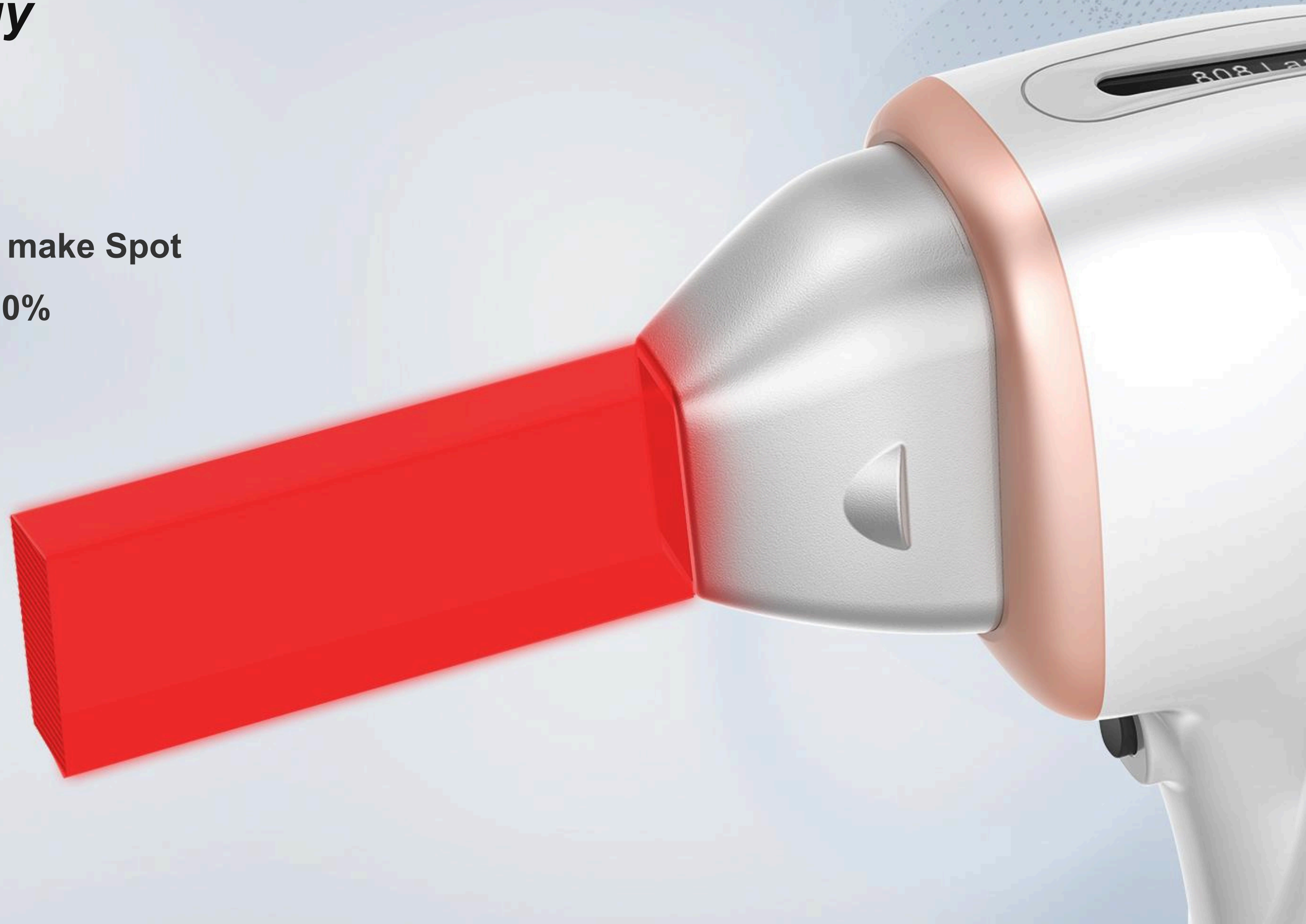
Max. 10Hz

FREQUENCY

G₂I

○ ***FAC Technology***

- **Germany LIMO lenses make Spot
uniformity increase 100%**



○ **Interface**

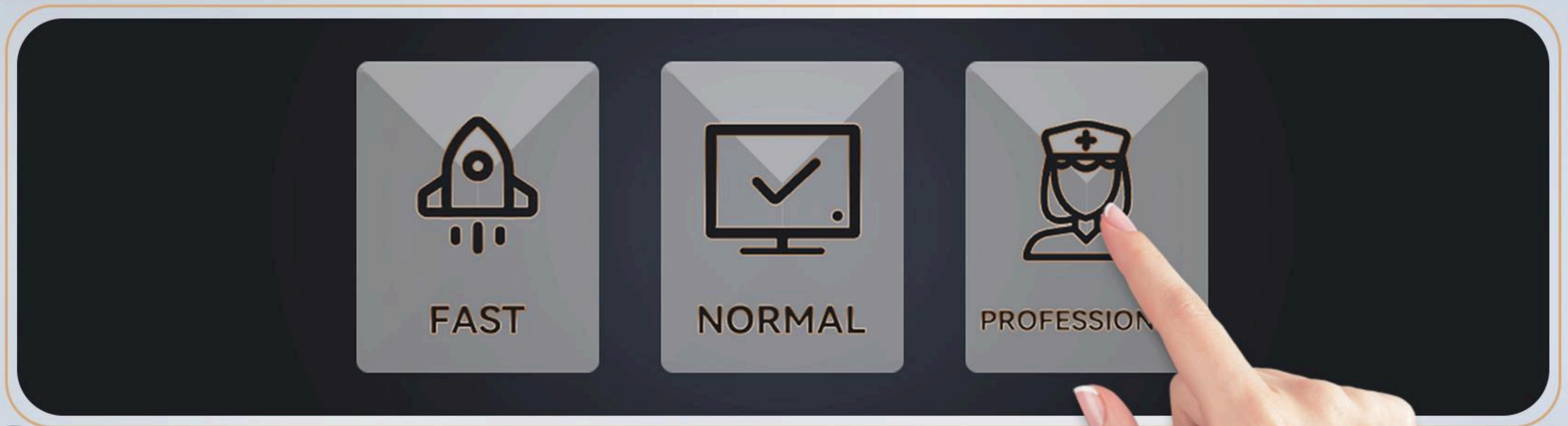
The HIDL-1800 has a 12" touchscreen LCD featuring a completely redesigned and intuitive user interface.

Users can select between the Normal mode, Professional mode, and Fast mode.

Beginners can choose the Normal mode, the operator can use the recommended parameters according to skin type, treatment area.

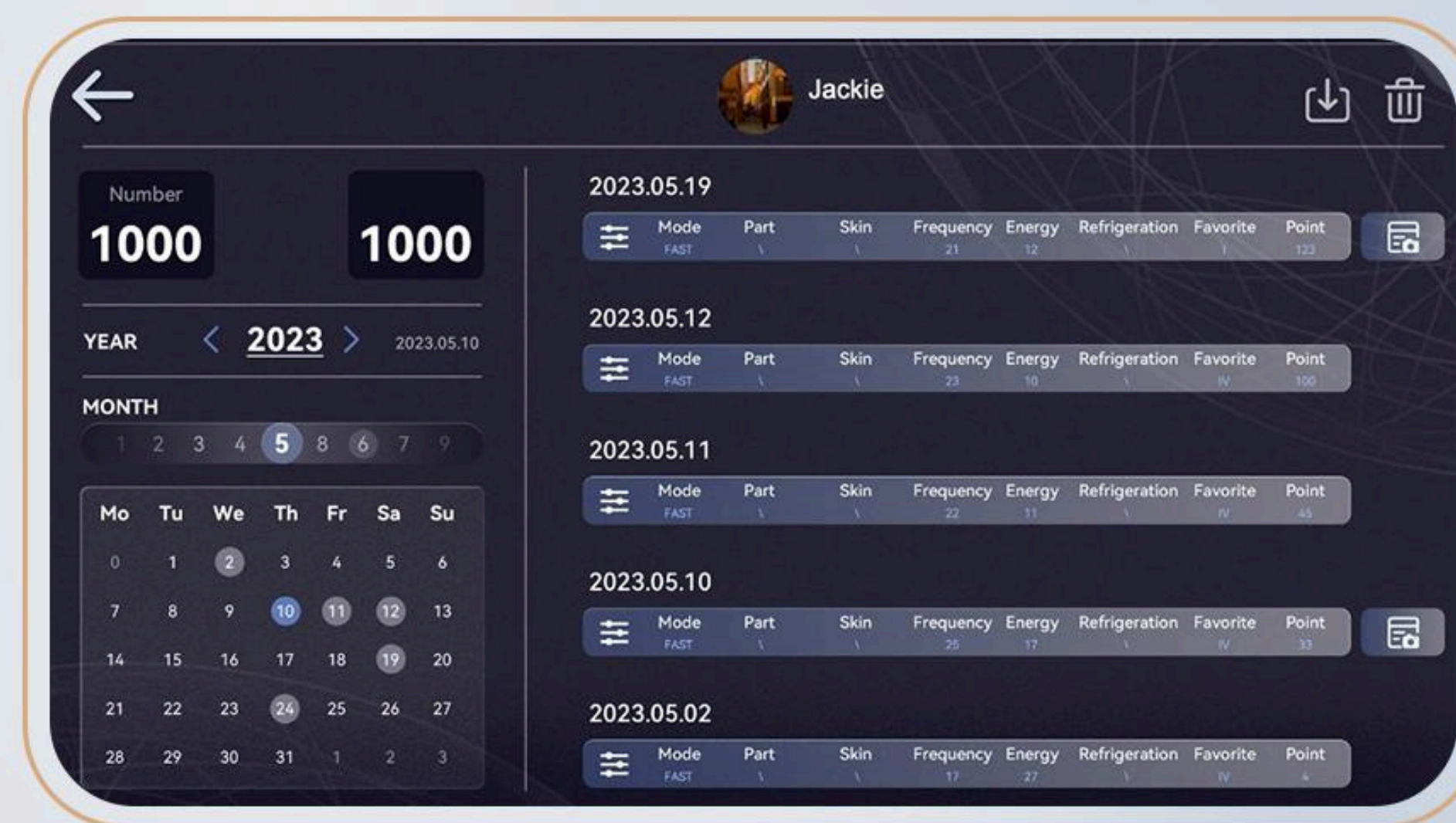
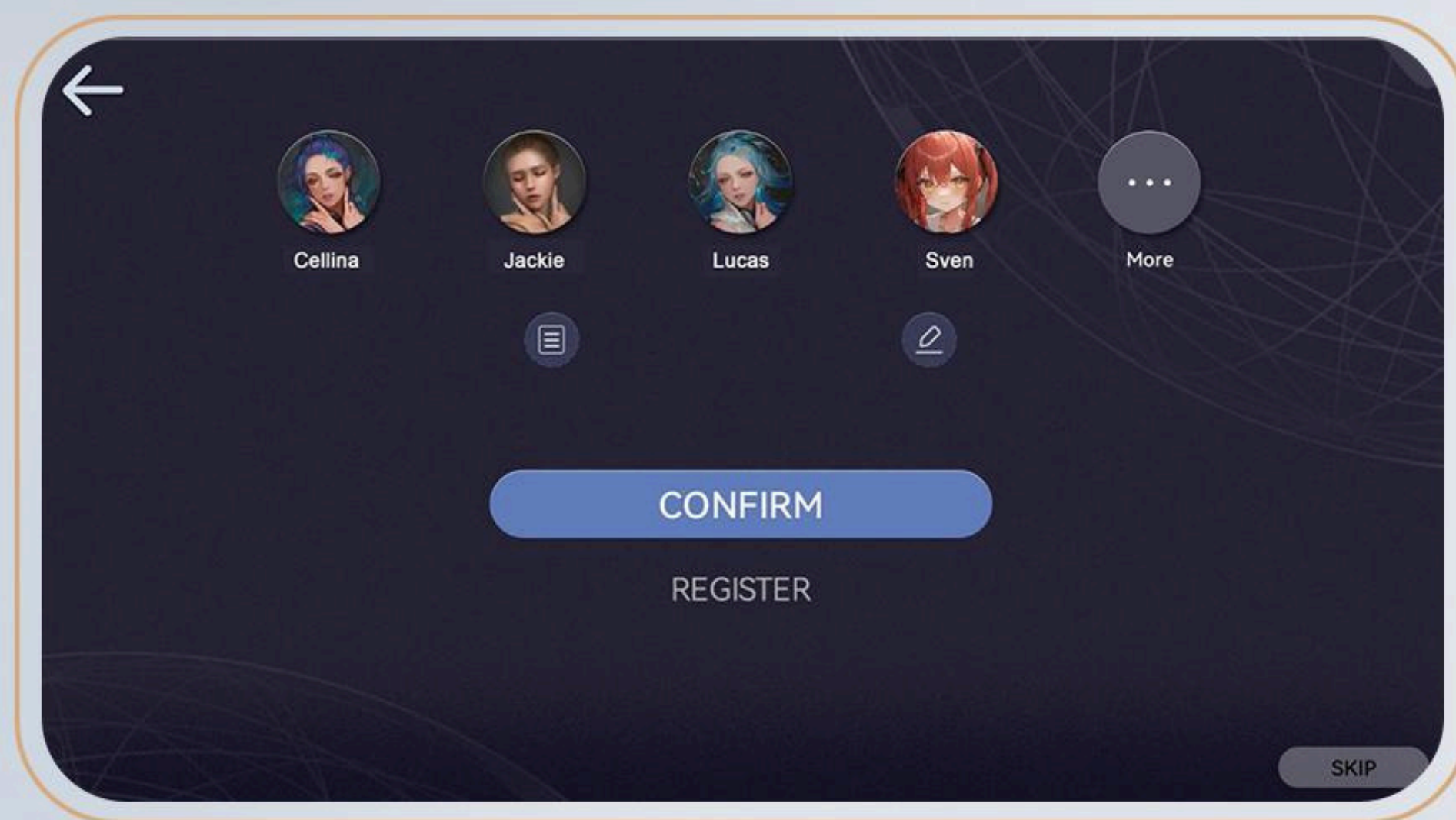
Experts can go directly to the Professional mode or Fast mode, to configure the parameters themselves.

And Professional mode display the Pulse Duration in real time.



Customer CRM System

- Clients information storage
- Treatment parameter memory function in all the treatment date

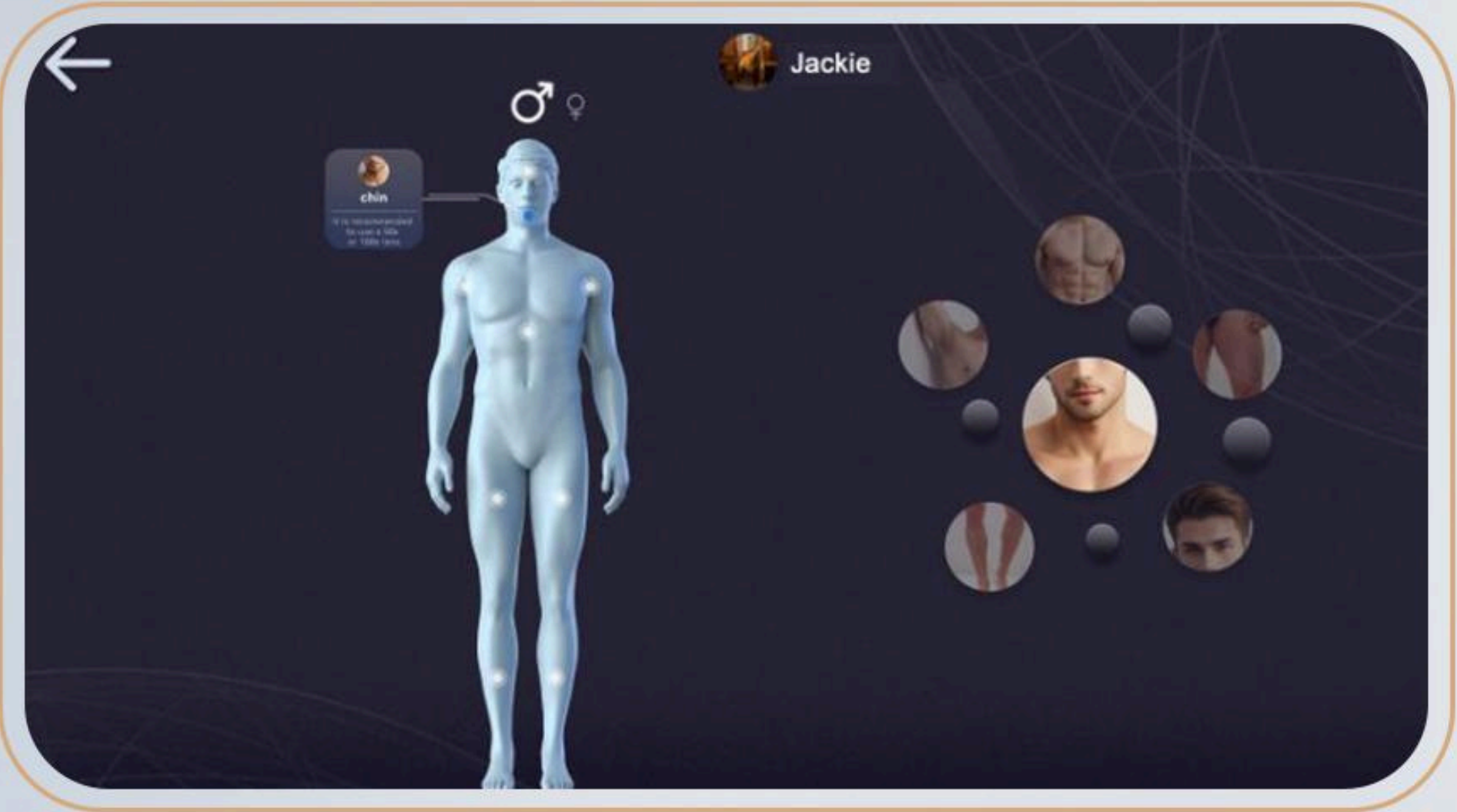


○ *Hair analysis system*

G_{2I}

AI Intelligent Analysis

○ Treatment area



○ Analysis results



○ *Hair analysis system*

G₂I

OPTIONAL

- Skin Color
- Hair Color
- Hair Thickness
- Hair Density
- Result



2024.04.01-20:45

33%

Skin Color

56%

Hair Color

72%

Hair Thickness

13%

Hair Density

Follicle Number		Skin Color	
	Result		Result (ITA°)
Single Hair Follicle	22	Skin Color	24.5
Double Hair Follicle	12	Skin Color Result	medium
Total Hair Follicle	34		
Hair Thickness		Hair Density	
	Result		Result
Coarse Hairs	22	Result	24.5
Medium Hairs	12		
Fine Hairs	34		
Total Hairs	34		

○ ***FAC Technology Fast Axis Collimator***

Collimator Lens Focus Beam

Collimate the light path, reduce the divergence angle of the beam, and turn the divergent light path into a parallel light path. Smoother the edges of the laser beam.



G₂I

○ ***FAC Technology Fast Axis Collimator***

G_{2I}



After addition of a collimator lens, beam focus



Without optical shaping, the beam diverges rapidly

○ *Handle Screen*

LCD Touch Screen



Energy Adjustment



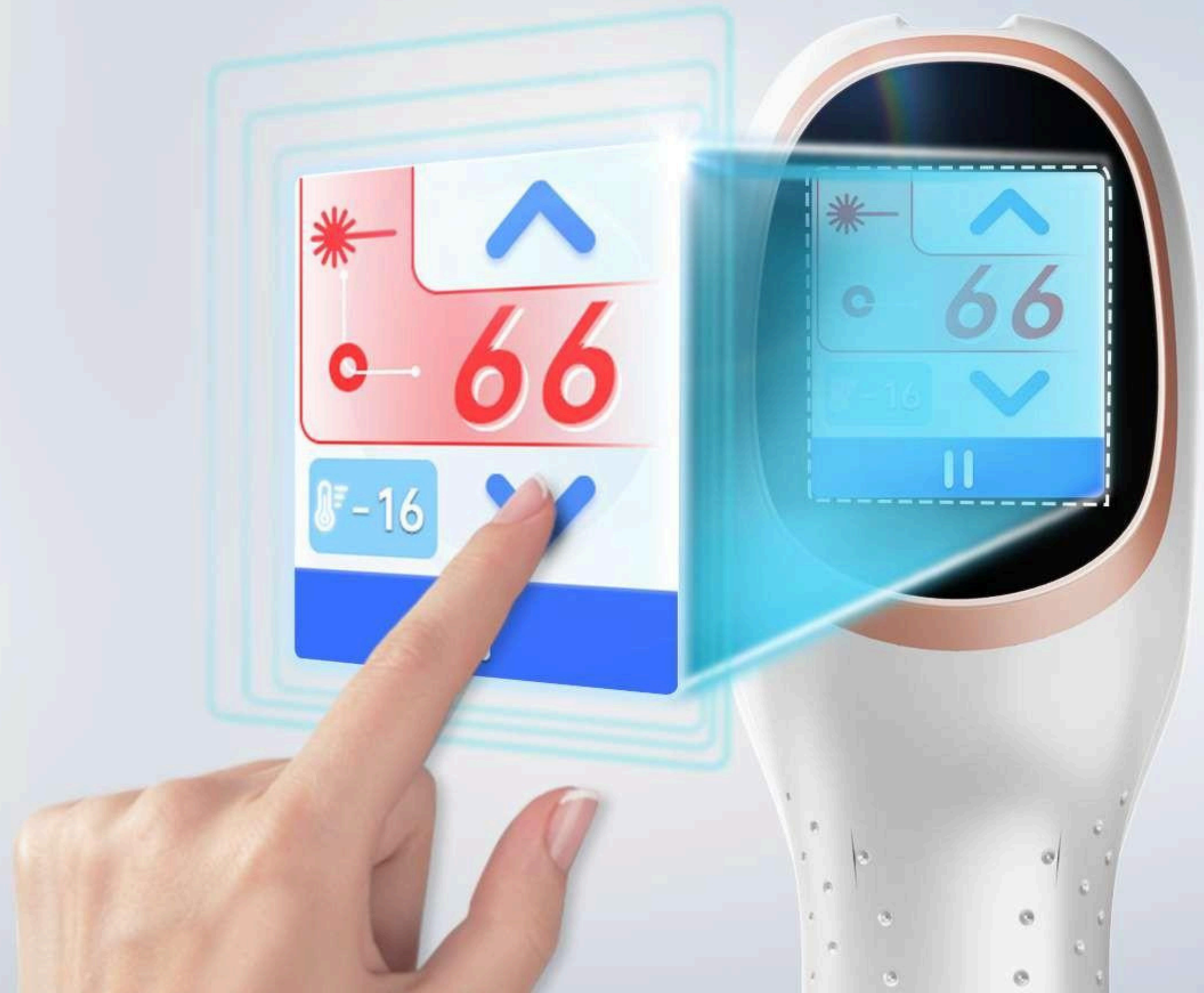
Pulse Width Adjustment



Frequency Adjustment



Real-time Temperature Monitoring



○ ***Magnetic Heads***

Magnetic Heads, Strong And Safe.

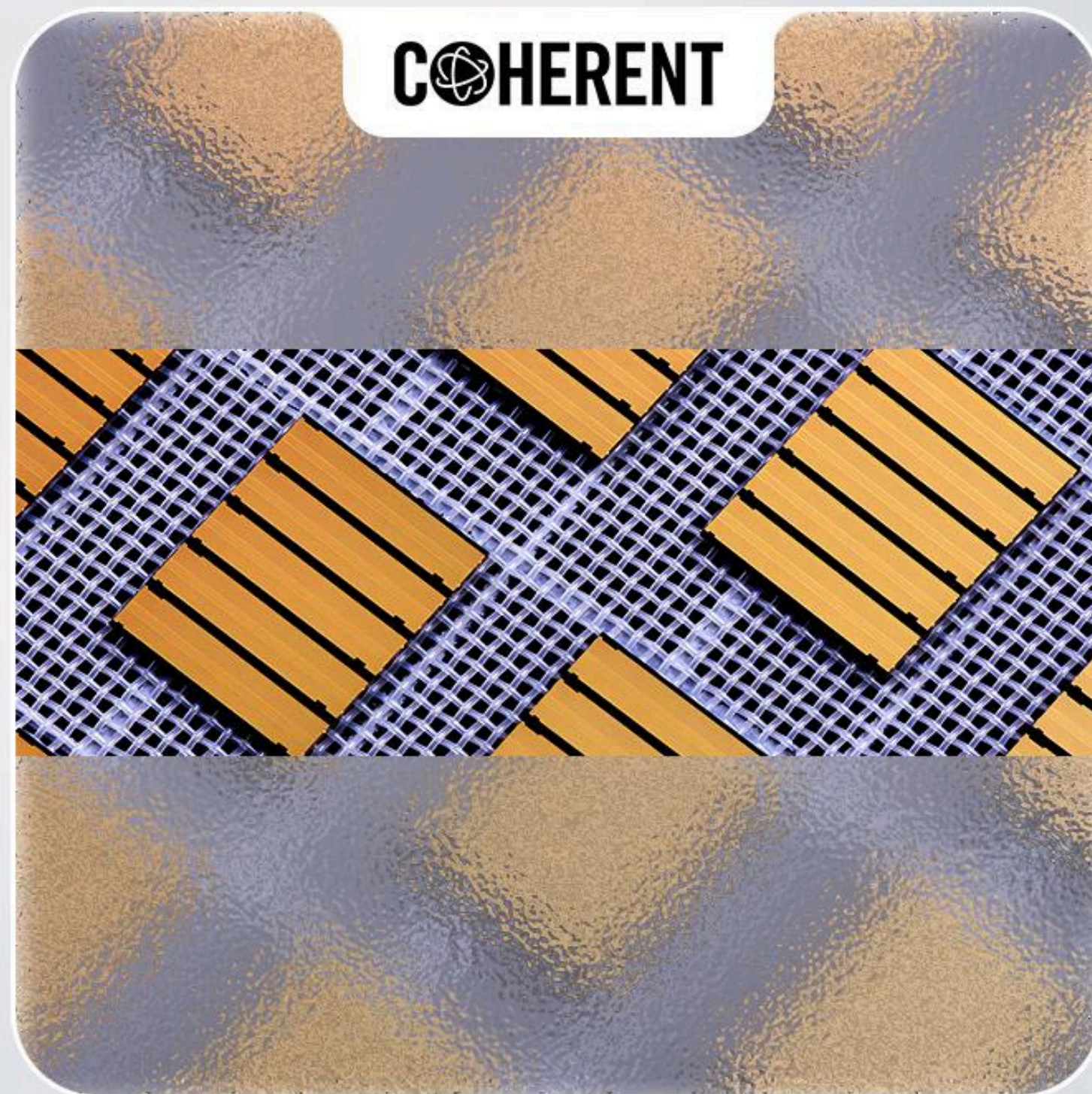
The magnetic connection is strong enough to resist most unintended disconnects, making sure the treatment is safe and perfect going.



Q2I

○ ***American Original***

G_{2I}



American Original Import

By Original American Coherent laser technology, the original bars are adopted in the laser generator to ensure that the output is stable and sufficient. The high quality bars guarantee a super zlong life span of the laser.

○ *High-end Hollow Silent Wheels*

High-End Hollow Silent Wheel

○ Stabble ○ Silent ○ High Level



Cooling Technology

Handpieces With 360° Contact Cooling Strong Cooling

With strong TEC cooling technology, No pain during treatment, give patient a more comfortable treatment, and get a better treatment results.

G₂I



○ ***Water Proof***

***Best water proof
Results***

G₂I



Specifications

WAVE LENGTH

808nm

FLUENCE

5~80J/cm²

PULSE WIDTH

5-100ms

SPOT SIZE

12.5*14.5mm 13.5*28.5mm
13.5*38.5mm Round 8.25mm

FREQUENCY

1~10Hz

HANDLE POWER

1800W

MACHINE POWER

4500W

COOLING

TEC, air cooling + water cooling +
semiconductor cooling

COOLING LEVEL

Level 1-3

HANDPIECE COOLING

-20°C

DISPLAY

12 Inch multi color touch screen

