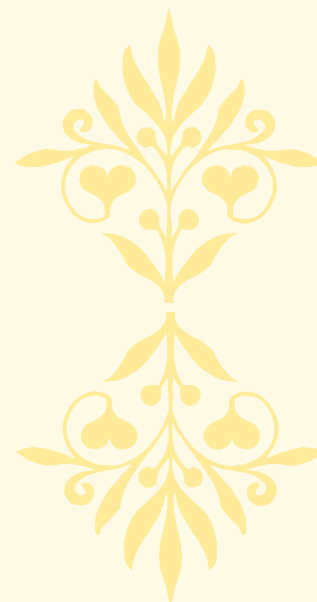


Celebrating 12 Years of Empowerment

LIVE FOUNDATION was envisioned as a symbol of empowerment, transforming the lives of women, farmers and forest dwellers. One focused objective: to build integrated communities where women, farmers and forest dwellers would be empowered to participate in the developmental process, bringing their own needs, perspective and abilities on board. In the year 2022, LIVE FOUNDATION completed 12 years of its humble efforts in bringing change and building resilience amongst the marginalized and underserved communities living in some of the remotest panchayats across the state.

LIVE FOUNDATION is dedicated to work with grassroot governance i.e. Panchayat Raj Institutions (PRIs), line departments of government, Research Institutions and private agencies. And it does it with empathy and commitment to bring the most marginalized to the fore and help them understand the meaning of 'being'. While experiencing the collective strength and gaining long term perspectives the SHGs and CBOs acquired new skills. LIVE FOUNDATION gave them the tools to shape change - empowering women to be at the forefront of programs with LIVE FOUNDATION as facilitator helping women to identify and articulate their own needs. In keeping with this women-centric approach, the process for change became crucial. Even as new skills and technologies were introduced the organization always remained rooted in indigenous culture and local resources. This has been the ethical approach LIVE FOUNDATION adopted since its inception.



CHHANDOSREE
Managing Trustee
LIVE FOUNDATION

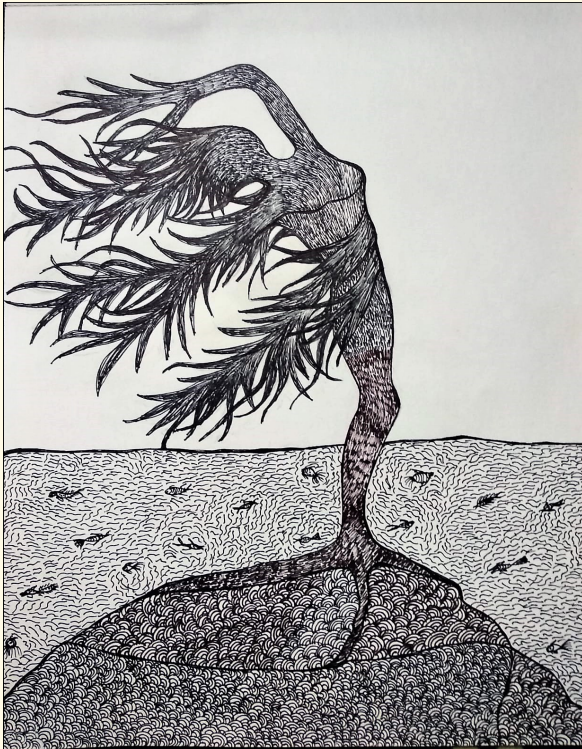
Aspired freedom— as depicted by **Bharti** (Member— LIVE FOUNDATION)



The Pandemic

The outbreak of the pandemic Covid-19 was new and a never seen or experienced situation for the organisation and for its associated local communities. At a time when the organization lost some of its core group members to the pandemic, the other pillars did not lose hope or got discouraged and continued to work and kept on delivering awareness-raising campaigns to reduce the spread. We also worked closely with local partners to provide health and hygiene support to the vulnerable people. People with disabilities and vulnerable groups are often left behind in emergencies but LIVE FOUNDATION prioritised their inclusion within the Covid-19 response to protect older people, migrants and children.

Supporting the vulnerable community during the pandemic COVID - 19



The pandemic triggered by Novel Coronavirus has affected everyone. While it has hit everyone, the most vulnerable the hardest. Migrant workers were forced to return to their villages, daily wage earners lost their job and dependency on agriculture-based works increased in the context of Jharkhand.

The World Bank estimates that global remittances, a key source of income for migrant workers' families will fall by 20% due to the pandemic. In the on going pandemic crisis, the most immediate need that emerged were food and breaking the chain of infection. During these unprecedented times, the role of NGOs became paramount in combating the coronavirus and its impact on society's most vulnerable communities, especially in Jharkhand where the government services were struggling due to the large inflow of migrants, challenges of quarantining them and ensuring the safety of the local population.

**The years 2021-2022
Pandemic- sketch by
Bharti**

The pandemic has impacted all aspects of the work of the organisation – from running programs, planning finances, coordinating staff and collaborating with partners and stakeholders. However, LF has coped with these challenges and has paved the way for

new opportunities and innovative ways of working in the sector – a way forward re-visioning how we can tackle the pandemic crisis together as a community.

Amidst the operational and financial challenges of Covid-19, LF remained committed to protecting key stakeholders while delivering vital services. Keeping frontline staff safe was a top priority. In order to keep the organizations' activities functional, the field staff took all the precautions of social distancing, they travelled to the field by motor cycle, carried sanitizers, wore a washable reusable mask, etc.

The organization crew worked with the local administration and offered support wherever required, adapting Covid Appropriate Behaviour (CAB). Hunger is one of the major issues among the migrant labourers and other vulnerable communities. From April 2020 to June 2020 and again from April 2021 to June 2021, LIVE FOUNDATION (through crowd funding and individuals' support) distributed dry ration to migrants and marginalized families for three months till they joined work.



Strengthening Lac Producers Cooperative Society and Lac Processing Unit in three blocks of West Singhbhum for enhancing Livelihood to Tribal Farmers (West Singhbhum District Innovation Fund)

LIVE Foundation has an experience of working with Farmers and Forest Dwellers since 2010. It has carried out its integral activity of forming Farmers' Cooperative Organization (FPOs) with Agriculture and Forest produce to tap the potential to start small enterprises.



The organization has been able to reach to a scale of 5000 Agri and Forest producers in two blocks of Ranchi, one block of Khunti district and one Block of West Singhbhum. These producers' group have already successfully demonstrated the practice and processing units. In Bundu block of Ranchi successful demonstration of lac cultivation is achieved. In Tonto Block of West Singhbhum Farmers' Cooperative had been formed and they started working with processing of agriculture and forest produces.

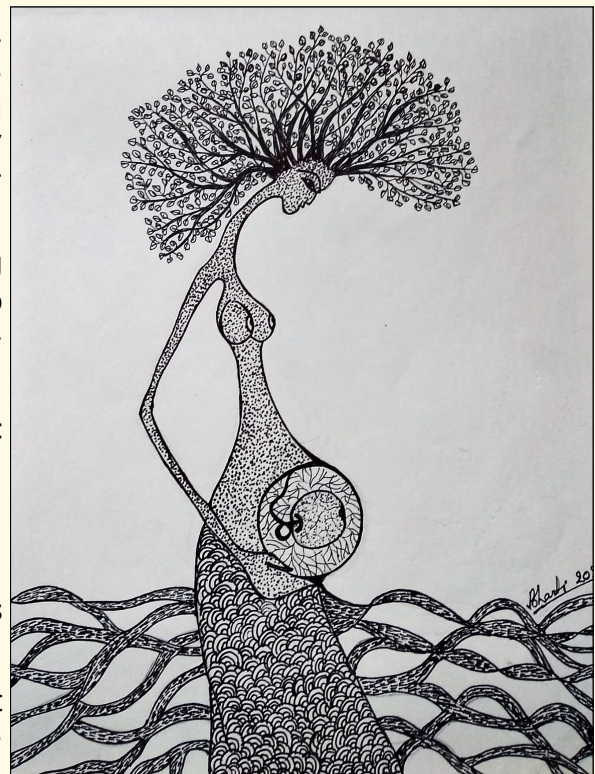
In Jharkhand, it is evident that lac is a major source of alternative livelihood through NTFPs. Under the present project 250 Lac Cultivators have been associated from the three blocks of West Singhbhum.

Vision of Success: Aspired vision of the project is to meet brood sufficiency in the lac production sector through scientific techniques of lac cultivation and proper market linkages.

Goals: Establishing Lac as a key product to supplement the income of rural poor through creation of a sustainable model and hence bringing them one step forward towards becoming key players in an important growth-oriented product.

Objectives: Under the proposed project focusing on lac cultivation, LIVE Foundation aims to achieve the following objectives with the support of District Administration:

- Capacity building of tribal farmers on Scientific Lac Cultivation, Processing and Production.
- Create and strengthening the value chain through end-to-end solutions.
- Setting up production cum Business Centres for aggregation, value addition and fair pricing.
- Develop Lac co-operatives to act as the market-facing entity for lac selling and income generation activities
- Establish Lac processing unit and their market linkages



Trees- Nurturing Earth—sketch by Bharti

Impact of lac cultivation on economic strengthening of tribal women

Agriculture is the main occupation, but it provides employment only for three to four months and creates the problem of seasonal unemployment. Male members of the family migrate for daily wage labour work, and women and children forced for collection of forest produces for livelihood security.

Lac cultivation provides great scope for socio-economic uplift of women. There is tremendous natural resource in the form of lac host trees in this region.

For economic strengthening of tribal women, lac cultivation has been promoted in cooperative and in SHG mode. Critical inputs for establishment of plantation and lac cultivation, training on lac cultivation and value addition, technical guidance and advisory services have been provided to the lac farmers of Tonto, Tantanagar and Jhinkpani blocks.

Five farmers' cooperatives have been formed in these blocks with over 250 members who are involved in scientific method of lac farming.



Forest Resource Management

LIVE FOUNDATION with an objective of conservation and sustainable forest management in Palamu, Latehar and Dumka districts, organized trainings to strengthen the gram sabha. The purpose of capacity building of gram sabha was to develop forest resource inventory and to orient and provide handhold support to forest dwellers at village level with a special focus on women and marginalized communities. The forest resources are an important contributor to the total livelihoods among the tribal communities in the block. Forest development integrated with agricultural progress has great potential to enhance livelihood security, poverty reduction and food security for the vulnerable community.

In Palamu, LIVE FOUNDATION took the initiative of identifying the pastoralists groups and conducted an in-depth research study on their lives and the dying culture of pastoralism in a bid to rejuvenate their dying cultures and more importantly the vanishing small-scale woolen-blanket making industries.



Women Self Help Groups (SHGs)

In West Singhbhum, Khunti, Dumka and Simdega districts of Jharkhand LIVE FOUNDATION has identified vulnerable women from poor economic background and organized them into 200 Self Help Groups. They have been well capacitated in leadership, managerial & financial management skills through trainings and exposure visits. These women are now involved in micro-credit and income generating activities. The income generating activities entail vegetable cultivation, livestock rearing, agriculture and collecting forest produce, thus a regular practice of saving. Women continue saving in groups hence; they are self-employed. Besides the economic activities the women actively take part in social welfare programmes and local self-governance.



Shilp Sahiyya – Weaving- Tailoring and Garment production



Display of Shilp Sahiyya products at Trifed, Ranchi

The objective of the Weaving- tailoring and garment production program is to provide a skill for an income generating activity. What started as a six-month course for 60 tribal women in two batches each from the rural belts of Latehar, Gumla and Simdega, emerged as a full time garment production unit in Kanke, Ranchi now from which traditional Bandis and other local fabric attires especially designed by trained designers are purchased by TRIFED and local buyers. The associated women with **Shilp Sahiyya** brand also get opportunity to display their 'makes' at the national level fairs.

LIVE FOUNDATION

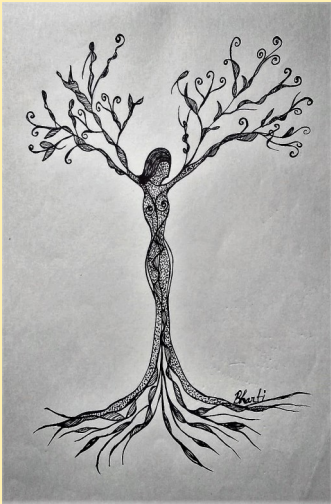
HINDPIRI 3RD STREET
Near MARWARI

Mobile:9431105982

E-mail:
livefoundation10@gmail.com

Recognizing 'Gender Equality'

Gender equality can be attained only through shift in mind-set of men. Women have excelled in almost all fields of society and have proved themselves biologically and physiologically at par with men. To an extent this has been possible due to encouragement and perseverance of some good-hearted men who have continuously stood by their side and paved the way for their success. One March 6, 2022, LIVE FOUNDATION felicitated 18 men who have contributed in bringing smiles and success in lives of many women and truly empowered them.



LIVE FOR LIFE
LIVE WITH DIGNITY



18 men who empowered state's women felicitated

TIMES NEWS NETWORK

Ranchi: State finance minister **Rameshwar Oraon** has said that he will take up the matter of providing guaranteed opportunities to women in government jobs, along the lines of Bihar, so that women's participation can be increased. The minister made this vow while speaking at a seminar on women's empowerment which was organised here on Sunday by Live Foundation and the World Youth Centre in collaboration with Ranchi Press Club.

The event, which comes just two days ahead of International Women's Day, focused on ways to bring in equal opportunities for women at all levels. Oraon, who addressed the gathering, said that only equal opportunities for women can change the status of women in society.

The president of Ranchi Press Club, Sanjay Mishra,



who was also one of the speakers at the event, demanded the immediate constitution of quasi-judicial bodies like the state women's commission. "The women's commission has been lying defunct for more than two years now and the government hasn't taken any step for its constitution. This

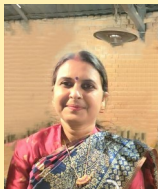
Olympian **Nikki Pradhan**, **Dumbi Purty**, who has created an archery centre in his house for women players and **Mangesh Jha**, who has worked immensely in the field of menstrual hygiene and has encouraged tribal women to use sanitary pads.

Girija Shankar, founder of **Nav Baharati Jagriti Kendra**, **Gulam Rabbani**, who promoted football among girls, **Ajay Jaiswal**, founder of **Asha Organization**, were some of the other men who were honoured. The attendees made a charter of demands which will be presented to the state government for bringing in policy change. The CEO of Live Foundation, **Chandoshree Thakur**, said: "It is high time that we bring women at par with men and they should be given equal opportunities. But that cannot be achieved in isolation and it must be brought about through policy change."

SEMINAR ON WOMEN EMPOWERMENT

has completely destroyed the redressal mechanism for women in distress in Jharkhand," Mishra said.

The event also saw the felicitation of 18 men from Jharkhand who have played a big role in the uplift of women and have supported them in their ventures. The list included **Soma Pradhan**, father of



Bharti
Board Member

