

# 1100 *atton*

A LIFESTYLE RENTAL COMMUNITY



*LIVE THE LIFE YOU'VE EARNED.*

# WELCOME HOME

At 1100 Afton, we understand that home is more than four walls. It's where your next chapter unfolds. Our thoughtfully-designed community offers the perfect blend of comfort, convenience, and connection. Whether you're simplifying, right-sizing, or simply seeking a vibrant community where you can focus on what matters most, 1100 Afton is designed for the life you want to live now.

**MODERN LIVING. MAINTENANCE FREE. YOURS TO ENJOY.**

## THE 1100 AFTON LIFESTYLE.

**MORE TIME FOR WHAT MATTERS.**



Imagine waking up without the worry of home maintenance, yard work, or unexpected repairs. At 1100 Afton, we take care of the details so you can focus on the things you love.

### FEATURES INCLUDE:

- Modern, open-concept layouts
- In-suite full-size washer and dryer
- Stainless steel kitchen appliances (dishwasher, fridge, stove)
- In-suite temperature control
- Central air conditioning
- Spacious private balconies
- Ample storage throughout & onsite
- Controlled building access for peace of mind
- Indoor bicycle storage

Life at 1100 Afton is about connection and community. Our amenity spaces are designed to bring residents together or provide the perfect spot for quiet relaxation.

### COMMUNITY AMENITIES INCLUDE:

- Welcoming social lounge for gatherings & events
- Rental suite for family & friends
- Fitness studio designed for all activity levels
- Pickleball court & outdoor fitness equipment
- Outdoor spaces including BBQ area and seating
- Community garden beds, car wash station
- Covered parking available (*extra fee*)
- Pet-friendly community (*restrictions apply*)
- Professional Resident Life management team

## COMMUNITY & AMENITIES

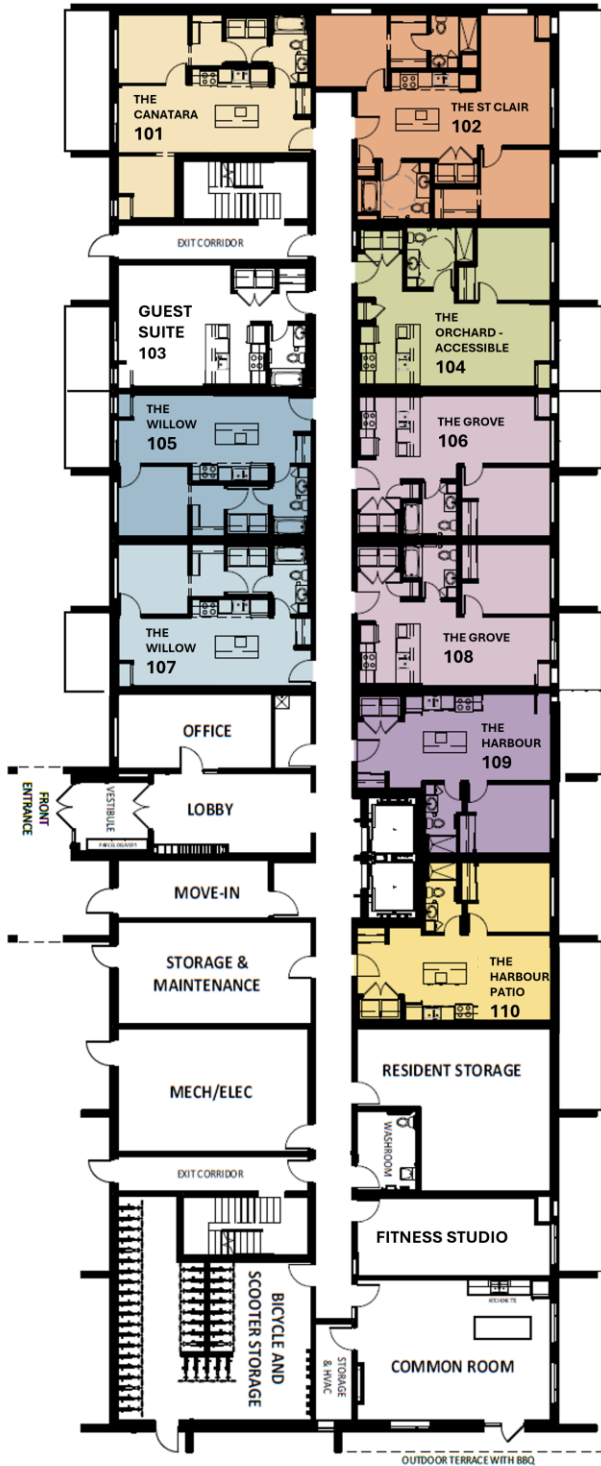
**WHERE NEIGHBOURS BECOME FRIENDS.**



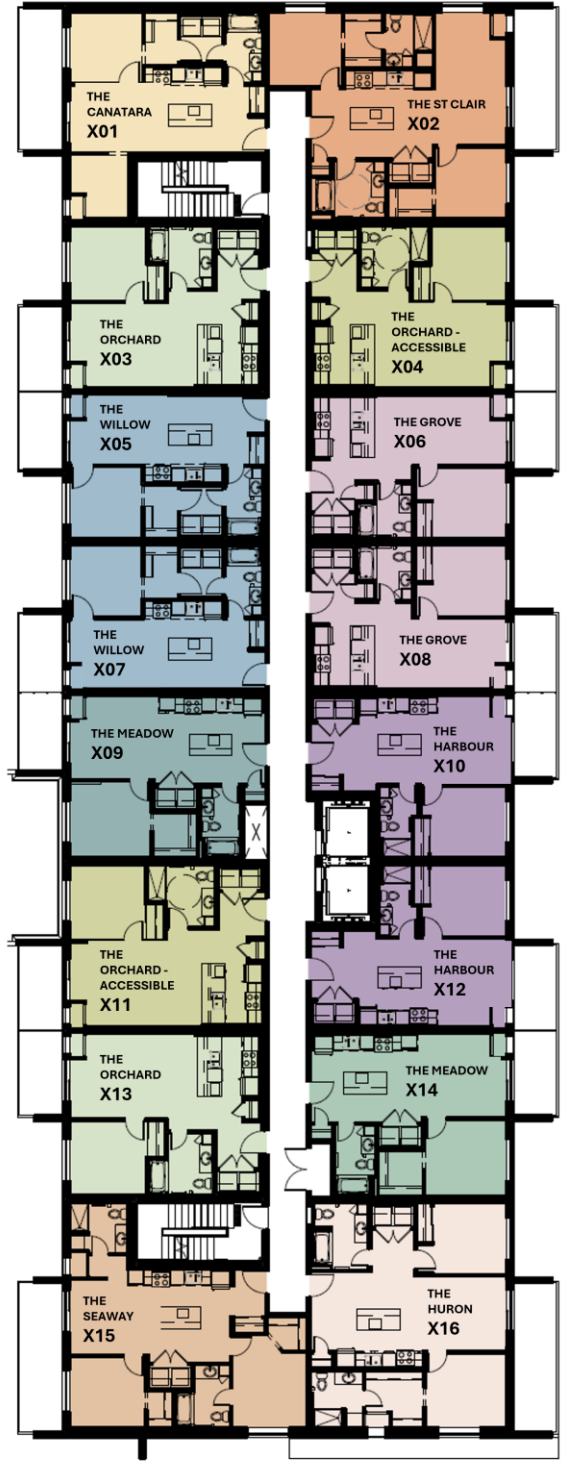
1100  
afton

# FLOOR PLANS

## 1st Floor



## Floors 2 - 6



# THE CANATARA

1 Bedroom + Den 1 Bathroom



## SUITE DETAILS

### Room Dimensions:

848 Sq Ft

- Bedroom: 10'-2" x 9'-11"
- Walk-in Closet: 4'-8" x 7'-4"
- Den: 8'-2" x 9'-0"
- Kitchen: 11'-1" x 12'-0"
- Living Room: 10'-6" x 9'-5"
- Balcony: 6'-0" x 20'-0"
- Bathroom: 5'-3" x 7'-2"
- Laundry: 6'-0" x 6'-7"

### Furniture Dimensions:

- Sofa: 78" x 34"
- Coffee Table: 24" x 47"
- TV Stand: 16" x 59"
- Queen Bed
- Nightstands: 16" x 20"
- Dresser: 19" x 40"
- Table: 36" x 36"
- Chairs: 19" x 22"
- Bar Stools: 19" x 22"

*\*Approximate dimensions only, subject to change without notice*

# THE ST. CLAIR

2 Bedroom 2 Bathroom



## SUITE DETAILS

### Room Dimensions:

1,112 Sq Ft

- Primary Bedroom: 10'-2" x 10'-5"
- Walk-in Closet: 5'-4" x 7'-8"
- Bedroom: 10'-0" x 10'-10"
- Kitchen: 11'-1" x 12'-0"
- Living Room: 10'-0" x 18'-9"
- Balcony: 6'-0" x 20'-0"
- Ensuite: 4'-1" x 7'-8"
- Bathroom: 7'-2" x 8'-1"
- Laundry: 6'-2" x 3'-2"

### Furniture Dimensions:

- Sofa: 82" x 37"
- Loveseat: 59" x 37"
- Coffee Table: 30" x 60"
- TV Stand: 16" x 60"
- Queen Beds
- Nightstands: 16" x 20"
- Dressers: 19" x 40"
- End Tables: 16" x 16"
- Table: 36" x 36"
- Chairs: 19" x 22"
- Bar Stools: 19" x 22"

*\*Approximate dimensions only, subject to change without notice*

# THE ORCHARD ACCESSIBLE

1 Bedroom 1 Bathroom



## SUITE DETAILS

### Room Dimensions:

779 Sq Ft

- Bedroom: 10'-7" x 10'-7"
- Kitchen: 8'-7" x 8'-6"
- Dining: 7'-5" x 11'-9"
- Living Room: 11'-3" x 11'-9"
- Balcony: 6'-0" x 12'-0"
- Bathroom: 6'-10" x 8'-8"
- Laundry: 6'-0" x 3'-2"

### Furniture Dimensions:

- Sofa: 82" x 34"
- Armchair: 29" x 32"
- Coffee Table: 24" x 47"
- TV Stand: 16" x 59"
- Queen Bed
- Nightstands: 16" x 20"
- Dresser: 19" x 40"
- End Table: 16" x 16"
- Table: 42" Round
- Chairs: 19" x 22"
- Bar Stools: 19" x 22"
- Credenza: 57" x 18"

\*Approximate dimensions only, subject to change without notice

# THE WILLOW

1 Bedroom 1 Bathroom



## SUITE DETAILS

### Room Dimensions:

696 Sq Ft

- Bedroom: 10'-2" x 10'-0"
- Walk-in Closet: 4'-8" x 7'-5"
- Kitchen: 11'-1" x 12'-4"
- Living Room: 10'-6" x 9'-9"
- Balcony: 6'-0" x 11'-0"
- Bathroom: 5'-3" x 7'-2"
- Laundry: 6'-0" x 6'-11"

### Furniture Dimensions:

- Sofa: 82" x 34"
- Armchair: 29" x 32"
- Coffee Table: 24" x 47"
- TV Stand: 16" x 59"
- Queen Bed
- Nightstands: 16" x 20"
- Dresser: 19" x 40"
- Table: 30" x 36"
- Chairs: 19" x 22"
- Bar Stools: 19" x 22"

\*Approximate dimensions only, subject to change without notice

# THE GROVE

1 Bedroom 1 Bathroom



## SUITE DETAILS

### Room Dimensions:

696 Sq Ft

- Bedroom: 12'-8" x 9'-11"
- Kitchen: 8'-7" x 8'-6"
- Dining: 7'-2" x 9'-10"
- Living Room: 11'-6" x 9'-10"
- Balcony: 6'-0" x 11'-0"
- Bathroom: 5'-1" x 7'-8"
- Laundry: 6'-0" x 3'-2"

### Furniture Dimensions:

- Sofa: 82" x 34"
- Armchair: 29" x 32"
- Coffee Table: 24" x 47"
- TV Stand: 16" x 59"
- End Table: 16" x 16"
- Queen Bed
- Nightstands: 16" x 20"
- Dresser: 19" x 40"
- Table: 30" x 36"
- Chairs: 19" x 22"
- Bar Stools: 19" x 22"
- Credenza: 57" x 18"

\*Approximate dimensions only, subject to change without notice

# THE HARBOUR

1 Bedroom 1 Bathroom



## SUITE DETAILS

### Room Dimensions:

685 Sq Ft

- Bedroom: 10'-7" x 10'-0"
- Kitchen: 11'-0" x 12'-3"
- Living Room: 9'-10" x 12'-4"
- Balcony: 6'-0" x 12'-0"
- Bathroom: 5'-4" x 7'-4"
- Laundry: 6'-0" x 3'-2"

### Furniture Dimensions:

- Sofa: 82" x 34"
- Armchair: 29" x 32"
- Coffee Table: 24" x 47"
- TV Stand: 16" x 59"
- End Table: 16" x 16"
- Queen Bed
- Nightstands: 16" x 20"
- Dresser: 19" x 40"
- Table: 30" x 36"
- Chairs: 19" x 22"
- Bar Stools: 19" x 22"
- Bench: 42" x 20"

\*Approximate dimensions only, subject to change without notice

# THE HARBOUR – PATIO

1 Bedroom 1 Bathroom



## SUITE DETAILS

### Room Dimensions:

770 Sq Ft

Same layout as 'The Harbour', just with a larger patio.

- Bedroom: 10'-7" x 10'-0"
- Kitchen: 11'-0" x 12'-3"
- Living Room: 9'-10" x 12'-4"
- Balcony: 6'-0" x 12'-0"
- Bathroom: 5'-4" x 7'-4"
- Laundry: 6'-0" x 3'-2"

### Furniture Dimensions:

- Sofa: 82" x 34"
- Armchair: 29" x 32"
- Coffee Table: 24" x 47"
- TV Stand: 16" x 59"
- End Table: 16" x 16"
- Queen Bed
- Nightstands: 16" x 20"
- Dresser: 19" x 40"
- Table: 30" x 36"
- Chairs: 19" x 22"
- Bar Stools: 19" x 22"
- Bench: 42" x 20"

\*Approximate dimensions only, subject to change without notice

# THE ORCHARD

1 Bedroom 1 Bathroom



## SUITE DETAILS

### Room Dimensions:

773 Sq Ft

- Bedroom: 10'-9" x 10'-4"
- Kitchen: 8'-7" x 8'-6"
- Dining: 7'-2" x 11'-11"
- Living Room: 10'-11" x 11'-11"
- Balcony: 6'-0" x 12'-0"
- Bathroom: 6'-3" x 8'-9"
- Laundry: 6'-2" x 3'-2"

### Furniture Dimensions:

- Sofa: 82" x 34"
- Armchair: 29" x 32"
- Coffee Table: 24" x 47"
- TV Stand: 16" x 59"
- End Table: 16" x 16"
- Queen Bed
- Nightstands: 16" x 20"
- Dresser: 19" x 40"
- Table: 42" Round
- Chairs: 19" x 22"
- Bar Stools: 19" x 22"
- Credenza: 57" x 18"

\*Approximate dimensions only, subject to change without notice

# THE MEADOW

1 Bedroom 1 Bathroom



## SUITE DETAILS

### Room Dimensions:

738 Sq Ft

- Bedroom: 11'-5" x 10'-9"
- Kitchen: 14'-11" x 12'-3"
- Living Room: 12'-7" x 11'-8"
- Balcony: 6'-0" x 11'-0"
- Bathroom: 5'-6" x 7'-2"
- Walk-in Closet: 6'-2" x 6'-2"
- Laundry: 6'-0" x 3'-2"

### Furniture Dimensions:

- Sofa: 82" x 34"
- Armchair: 29" x 32"
- Coffee Table: 24" x 47"
- TV Stand: 16" x 59"
- End Table: 16" x 16"
- Queen Bed
- Nightstands: 16" x 20"
- Dresser: 19" x 40"
- Table: 42" Round
- Chairs: 19" x 22"
- Bar Stools: 19" x 22"

\*Approximate dimensions only, subject to change without notice

# THE SEAWAY

2 Bedroom 2 Bathroom



## SUITE DETAILS

### Room Dimensions:

1,034 Sq Ft

- Primary Bedroom: 10'-6" x 13'-0"
- Walk-in Closet: 5'-6" x 4' - 9"
- Ensuite Bathroom: 5'-0" x 8'-9"
- Bedroom: 10'-7" x 10'-0"
- Kitchen: 14'-6" x 11'-10"
- Living Room: 8'-1" x 10'-6"
- Balcony: 6'-0" x 21'-0"
- Bathroom: 8'-0" x 7'-0"
- Laundry: 6'-0" x 3'-2"

### Furniture Dimensions:

- Sofa: 72" x 34"
- Coffee Table: 24" x 47"
- TV Stand: 16" x 59"
- Queen Beds
- Nightstands: 16" x 20"
- Dressers: 19" x 40"
- Table: 30" x 36"
- Chairs: 19" x 22"
- Bar Stools: 19" x 22"
- Bench: 42" x 20"

*\*Approximate dimensions only, subject to change without notice*

# THE HURON

## 2 Bedroom 2 Bathroom



## SUITE DETAILS

### Room Dimensions:

1,119 Sq Ft

- Primary Bedroom: 11'-4" x 10'-5"
- Walk-in Closet: 8'-2" x 8'-1"
- Ensuite Bathroom: 7'-4" x 7'-10"
- Bedroom: 10'-3" x 10'-0"
- Kitchen: 12'-4" x 13'-6"
- Living Room: 11'-8" x 10'-6"
- Balcony: 6'-0" x 21'-0"
- Bathroom: 7'-5" x 9'-4"
- Laundry: 6'-0" x 3'-2"

*\*Approximate dimensions only, subject to change without notice*

### Furniture Dimensions:

- Sofa: 82" x 37"
- Armchair: 29" x 32"
- Coffee Table: 24" x 47"
- TV Stand: 16" x 59"
- End Tables: 16" x 16"
- Queen Beds
- Nightstands: 16" x 20"
- Dressers: 19" x 40"
- Table: 30" x 36"
- Chairs: 19" x 22"
- Bar Stools: 19" x 22"
- Bench: 42" x 20"