

115 DEWINDT ROAD
WINNETKA



Welcome

TO THE ICONIC
115 DEWINDT ESTATE
IN WINNEKTA, IL

115 DEWINDT ROAD

A residence of truly extraordinary design, features, and provenance, 115 DeWindt Road presents an exclusive opportunity to own and live in a home of distinctive significance. Rarely does a property with such flawless design, features, and historical significance become available. Resting on more than an acre of impeccable landscaping, this classic Georgian home was built by esteemed architect Denison Hull in 1936 to serve as his personal residence. Lived in and lovingly enhanced by four prominent families over almost a century, the home comprises more than 14,000 square feet over four levels of meticulously finished luxury living space surrounded by lush outdoor spaces that bestow the home with privacy, comfort, and open-air allure.

FEATURES & IMPROVEMENTS

EXTERIOR

- Low voltage lighting throughout property
- Programmable fountain
- 45' poured concrete, black bottom swimming pool with separate spa and new LED under water lighting
- Fully irrigated
- Property drains well from drain and pumping system in SW corner
- New cedar fence on east and south sides of property installed in 2020
- Roof overhauled in 2019
- Tuckpointed entire lower half of house in 2019 including extensive, scaffolded repairs and tuckpointing for all six chimneys
- Replaced roof and railing system above kitchen in 2017 as part of gut rehab

GARAGE

- Oversized, 3 car garage
- Custom Carriage House doors
- Radiant heating in epoxy floors
- California closet and organization system throughout
- Built-in charger for electric car
- New lighting

MECHANICALS & TECHNOLOGY

- All 7 fireplaces are wood burning with gas log sets added to all first-floor fireplaces and primary fireplace
- Newer water heater
- 7 HVAC systems (all NEW in last 3 years)
- Remotely controllable 16w gas-fired generator (NEW 2018) and transfer switch to run all critical systems in house
- Crestron home automation system, upgraded in 2017 De Giulio renovation, provides music throughout property and controls lighting and door into garage
- Cameras at front door, over pool and in 3rd floor study room
- Commercial, Packedge high-speed wireless network with 6 nodes and 2 switches
- Keyth alarm system on all windows and doors plus smoke and heat alarms throughout house







360° of beauty





ROOM DIMENSIONS

Foyer.....	63' x 10'	Primary Bedroom	28' x 12'
Living Room	20' x 34'	2nd Bedroom	14' x 15'
Dining Room	29' x 18'	3rd Bedroom	14' x 15'
Kitchen.....	19' x 17'	4th Bedroom.....	17' x 14'
Breakfast Nook	19' x 9'	5th Bedroom.....	13' x 14'
Family Room	20' x 20'	6th Bedroom.....	15' x 12'
Butler's Pantry	17' x 8'	7th Bedroom	11' x 14'
Library	18' x 19'	Office/Bonus Room.....	36' x 29'
Sun Room.....	19' x 18'	Exercise Room.....	12' x 30'
Mud Room.....	17' x 7'	Game Room	48' x 12'
Sitting Room (<i>second level</i>)	18' x 13'	Wine Cellar.....	15' x 22'
Sitting Room (<i>second level</i>)	14' x 15'	Theater Room.....	19' x 25'
Sitting Room (<i>third level</i>).....	13' x 15'	Laundry Room.....	16' x 12'





LIVING & DINING

Combining classic elegance with every modern luxury imaginable, this level is designed to accommodate everything from cozy family get-togethers to special occasion entertaining. It features perfect flow between rooms, sun-drenched views, 11.5-foot ceilings, and numerous pathways to the majestic outdoor spaces to allow for the most graceful gathering possibilities. A 63-foot long entry gallery welcomes guests through the courtyard front entrance while a space-optimized mudroom adjoining the three-car garage warmly greets family members. A stunning 2017 gut rehab of the kitchen, family room, mud room, and butler's pantry was completed personally by Mick De Giulio. From state-of-the art integrated sound and lighting systems to the highest end cabinetry, flooring, and appliances, the showcase kitchen modernizes this historic home with every valued amenity. From the library with hidden electronics and wet bar, to the formal dining room large enough to accommodate a 16-person table, this home has it all.



living room



sun room



dining room





hall



library



family room







family room/breakfast area



breakfast area





LAYERS OF LUXURY

Stunningly rehabbed in 2017 by Mick De Giulio, the kitchen, family room, mud room, and butler's pantry seamlessly blend state-of-the-art technology with the highest end finishes.

- » 60" Wolf Range and double oven
- » Separate steam oven
- » Sub-Zero refrigerator, freezer and two separate refrigerator drawers
- » Wine refrigerator
- » Two Miele dishwashers
- » Built-in, hidden, fully automatic, professional La Cimbali M1 coffee machine with dual integrated hoppers
- » Iceberg quartz countertops
- » State-of-the-art Crestron automation (music, lights, some doors)
- » Overhaul of all lighting with new highly engineered LED lighting throughout
- » New English white oak flooring
- » Enlarged window looking into back yard
- » Home theater system
- » Venetian plaster walls
- » Custom painted beams on ceiling



kitchen



kitchen



**EXTRAORDINARY
KITCHEN
PERSONALLY
DESIGNED BY
MICK DEGIULIO**





butler's pantry



butler's pantry



second level hallway



DREAMING

Peace and privacy are the hallmark features of this level. The primary bedroom suite features a gas fireplace, two gracious walk-in closets and access to the back stairway. The lavish primary bath, completed as part of the De Giulio renovation, showcases exceptional craftsmanship, stunning iceberg quartz surfaces, and top-of-the-line luxuries. Four additional bedrooms and three full bathrooms (one ensuite) provide ample living quarters for a large or growing family. Two perfectly positioned lounging spaces off the hallway are integrated into this level, allowing for comfortable family and friend gatherings.

BLISSFUL & SERENE

The primary bedroom suite showcases exceptional craftsmanship. Relax by the fire or take in an at-home 'spa day' in the renovated ensuite bathroom by De Giulio.

- » Gas log set fireplace
- » Two walk-in closets
- » Heated floors
- » Steam shower
- » Fully automated and heated
Toto bidet toilet (\$10,000)
- » Additional hidden walk-in closet
- » Iceberg quartz floors, counters and shower
- » Television hidden behind mirror above vanity







primary bathroom



primary bathroom



bedroom



bedroom

E-SCHOOLING & PLAY

Family, form, and function are the themes of this level, where a large study room with four built-in workspaces, built-in bookshelves, and vaulted ceilings serve as the centerpiece. A private, two-bedroom guest suite flanks the study room on one side with a full gym and half bath on the other.

When the work is done, move to the lower level for an unparalleled entertainment experience. A media room with projection tv and theater system is complemented by a wet bar area with sink, refrigerator, dishwasher and ice machine to create the perfect movie night. The dine-in wine cellar houses more than 3,000 bottles in optimal temperature- and humidity-controlled conditions. A partially finished game room rounds out the recreational offerings.







lower level media room



lower level bar



lower level wine cellar

EASE & CONVENIENCE

The walk-out basement connects to the pool cabana featuring separate indoor and outdoor showers as well as a separate half bath. Pool parties will be a breeze.



pool cabana

OUTDOOR OASIS

The dwelling is surrounded by exterior features and impeccably landscaped grounds fit for an estate of this caliber. The front entrance is set apart from the road by a spacious courtyard bordered by privacy hedges and ornamental features. The back grounds, on the south side of the house, allow for maximum sunlight. An outdoor kitchen and dining space with brand new built-in gas BBQ, fire table, and limestone table yields to lushly landscaped green areas and an expansive pool, hot tub, and fountain built by Boilini Pools.







rear view



pool



pool





backyard



backyard



entertaining patio



A photograph of a small, single-story red house with white trim and a grey shingled roof. A white cupola sits atop the roof. The house is surrounded by lush greenery, including a large tree behind it and a dense garden in the foreground. The garden features a low green hedge, a large bush of purple flowers on the left, and a tall, feathery green plant on the right. The text "115 DEWINDT ROAD" is overlaid in the upper right corner in a white, bold, sans-serif font. Below it, the phrase "a once in a lifetime home where memories are treasured forever" is written in a white, italicized script font.

115 DEWINDT ROAD

*a once in a lifetime home where
memories are treasured forever*



rear view

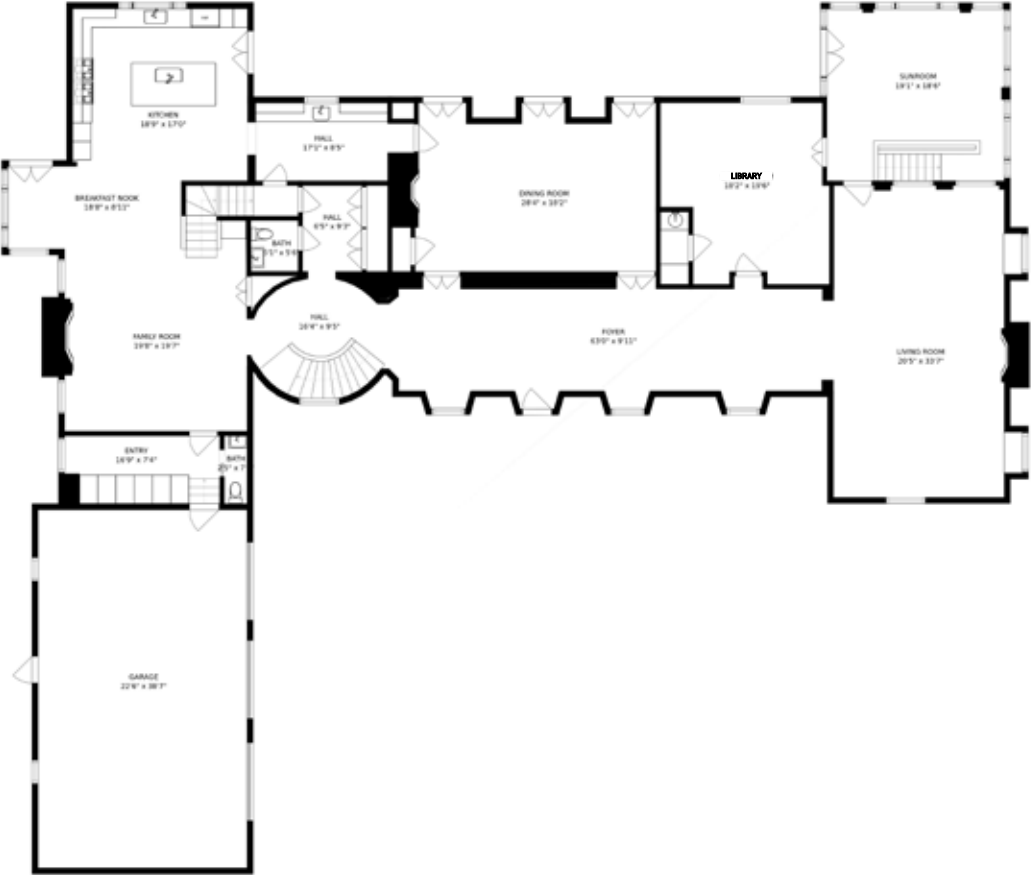


A large, two-story brick house with a white balcony and a well-manicured garden at night. The house has a dark roof with a central chimney. The front facade features a central entrance with a white door and a large window, flanked by blue shutters. To the right, there is a prominent white balcony with a decorative railing. The garden in the foreground is lush with green hedges, various plants, and flowers, including white lilies. The lawn is green and well-maintained. The sky is a deep blue, indicating twilight.

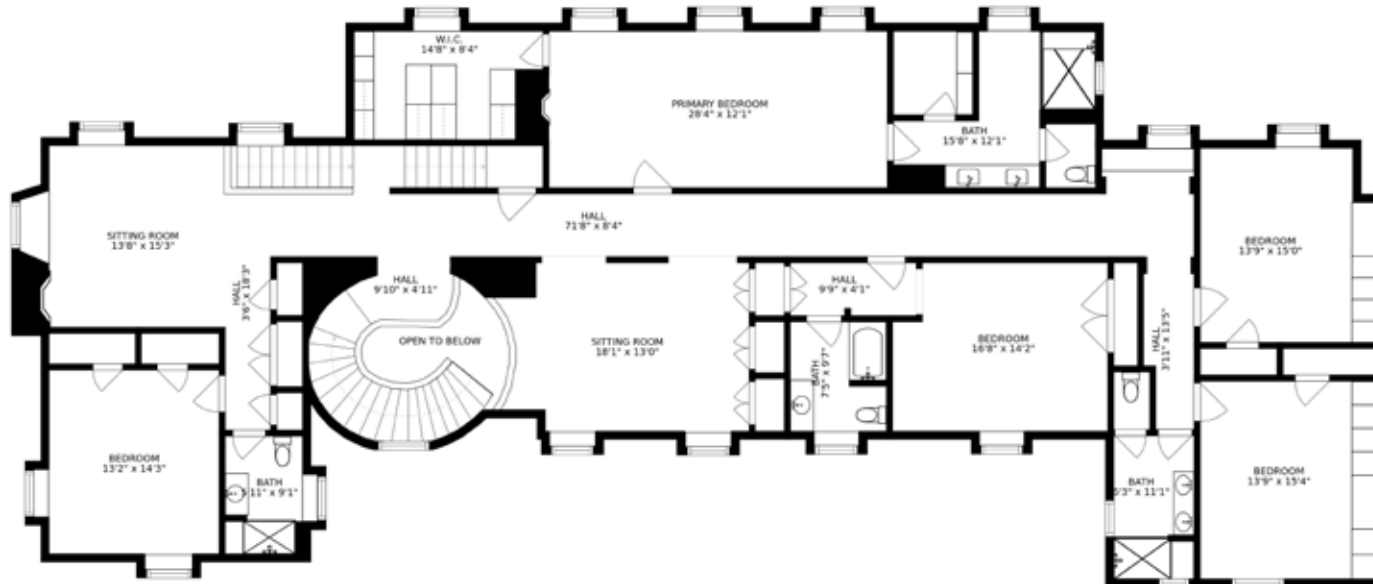
sunset dreams

115 DEWINDT ROAD

FIRST LEVEL



SECOND LEVEL



THIRD LEVEL



LOWER LEVEL



EXPERIENCE 115 DEWINDT.
SCAN CAMERA HERE



30 Green Bay Road | Winnetka, IL 60093
312.925.9899 | jradnay@atproperties.com



#1 *agent in*
WINNETKA
NEW TRIER
NORTH SHORE*

