

BUCKHEAD PROPERTIES

3171 Peachtree Rd.

Atlanta, Ga 30305

Iconic Infill Retail



DANCING GOATS COFFEE

NATUREPEDI^C



OVME

STORICO FRESCO ALIMENTARI

THE SHADE STORE

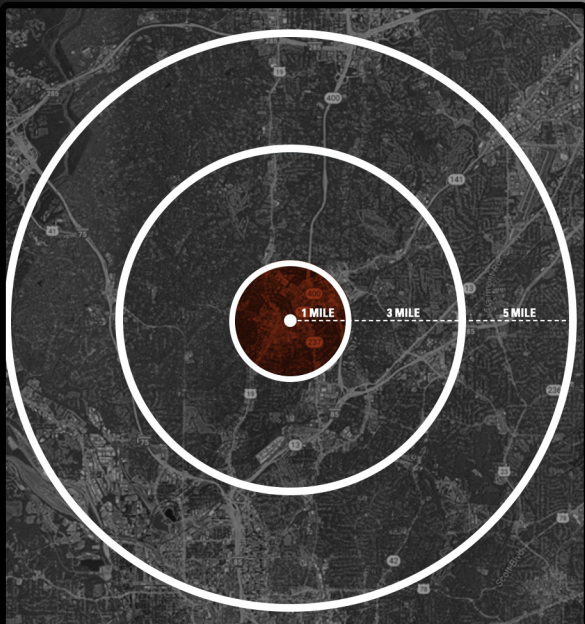
ideal dental EST. 2008

TOOTSIES SEPHORA



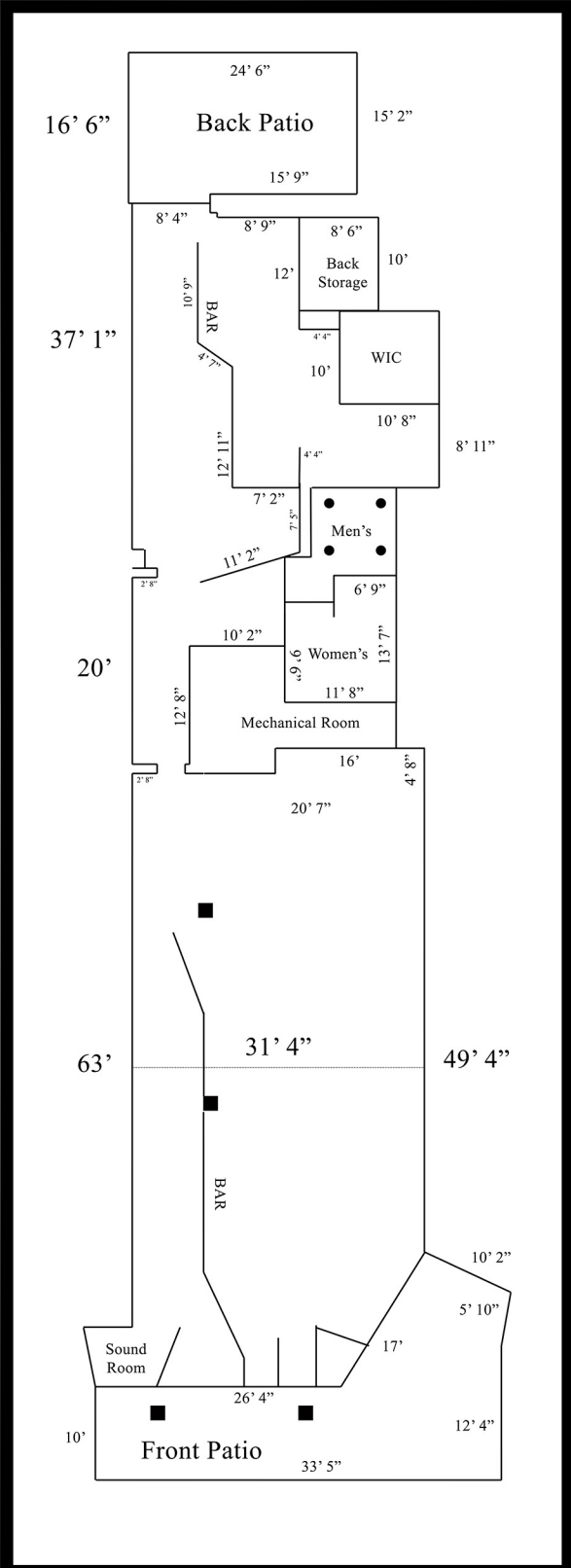
SPACE AVAILABLE
2,000 - 20,850 SF





	1 Mile Radius	3 Mile Radius	5 Mile Radius
ESTIMATED POPULATION	25,379	138,422	353,911
MEDIAN AGE	38.2	35.9	33.7
MEDIAN HOM VALUE	\$520,826	\$608,157	\$571,316
MEDIAN HH INCOME	\$139,608	\$196,705	\$184,584

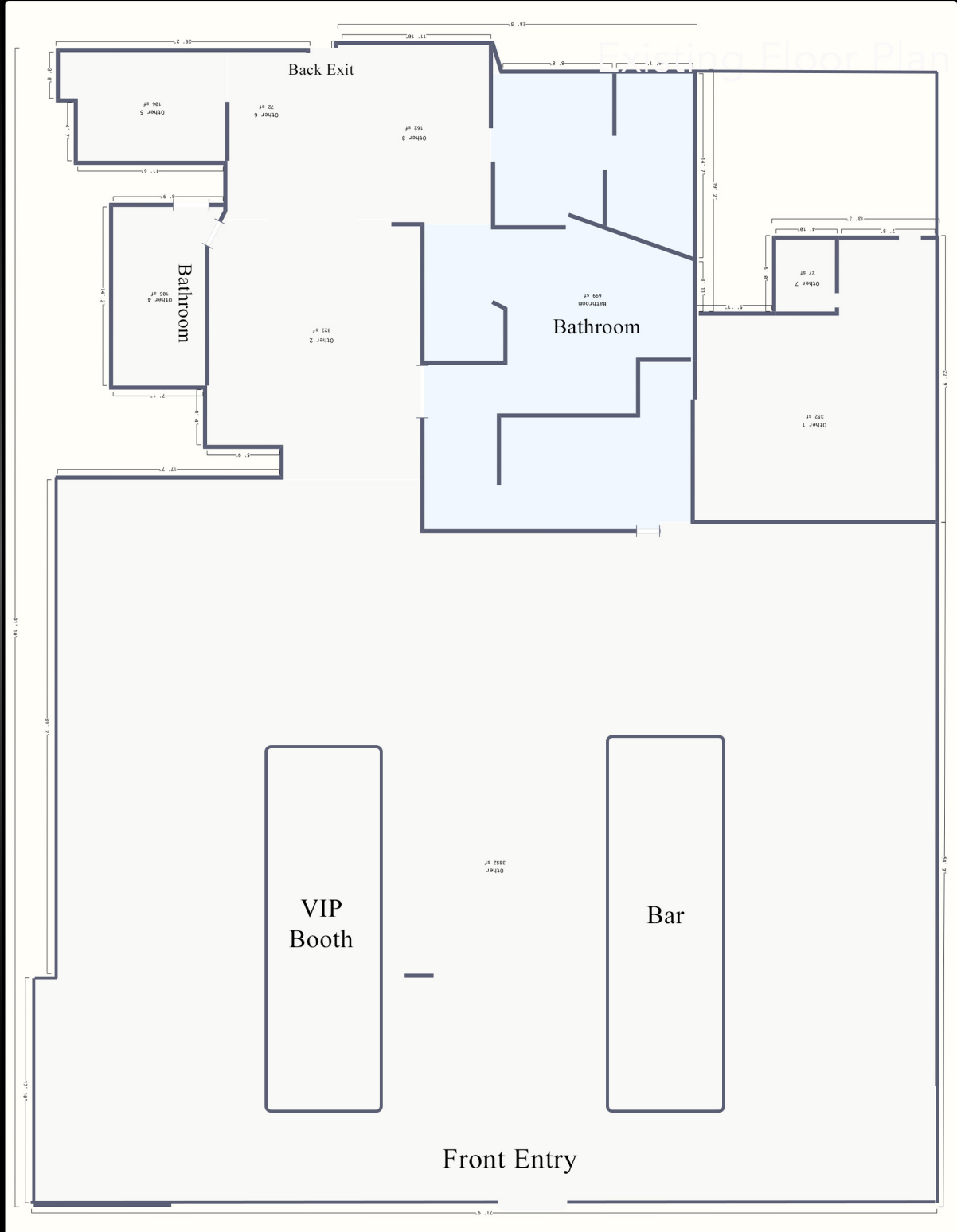
Space A Existing Floor Plan 4,257 SF



Former
Red Martini

Space C Existing Floor Plan

8,000 SF



Former Hole in the Wall

info:
Josh Ahlzadeh
josh@delzaproperties.com
404-580-8885

Buckhead

Atlanta, Ga



- **Prime Location:** Peachtree Road ensures high visibility and foot traffic.
- **Affluent Demographic:** Buckhead residents have strong purchasing power.
- **Business Hub:** Proximity to corporate offices drives consistent traffic.
- **Sustained Growth:** Ongoing investments fuel retail and economic expansion.
- **Event Opportunities:** Frequent festivals boost community and brand engagement.
- **Tourism Magnet:** Luxury hotels attract high-spending visitors year-round.