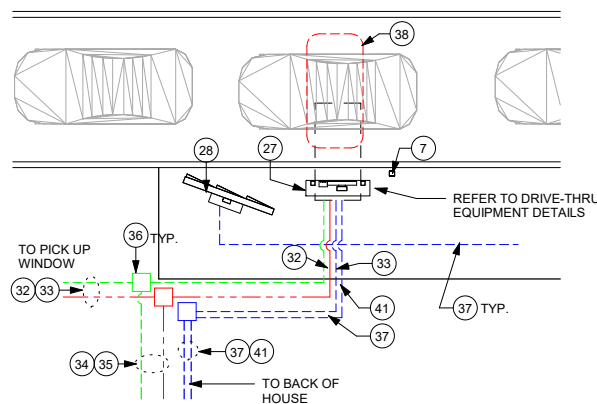
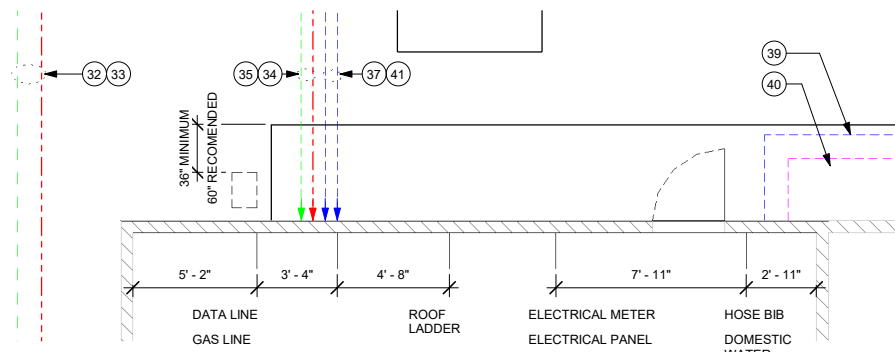


STANDARD SITE - CORNER - SINGLE LANE

Scale: 1" = 20'-0"



MENU BOARD DETAIL



UTILITY ENTRY PLAN

GENERAL NOTES

- A. BUILDING FOOTPRINT APPROXIMATELY 2200 SF, ON 0.85 ACRES, TYPICAL.
- B. PREFERRED SITE LOCATION ON MAIN PATH OF TRAFFIC WITH EASY INGRESS AND EGRESS. MORNING COMMUTE SIDE PREFERRED OF STREET.
- C. BUILDING SHOULD BE LOCATED ON SITE TO MAXIMIZE BUILDING PROMINENCE, MAXIMIZE DRIVE THRU QUEUE LENGTH, AND ALLOW EASY ENTRY/EXIT FROM SITE.
- D. BUILDING TO HAVE CLEAR LINE OF SIGHT FROM VEHICULAR AND PEDESTRIAN TRAFFIC. IT SHOULD BE LOCATED WITHIN 5 MILES OF A FREEWAY, WITH POSTED SPEED LIMIT OF MAIN STREET BELOW 55 MPH.
- E. SITE INCLUDES ADEQUATE PARKING TO MEET CUSTOMER AND EMPLOYEE NEEDS. INCLUDE 22 STALL MINIMUM DEDICATED PARKING (SUBJECT TO JURISDICTIONAL REQUIREMENTS).
- F. ALL UTILITIES ENTRIES TO BE LOCATED AT THE REAR OF BUILDING (AS SHOWN). PROVIDE PROTECTIVE BOLLARDS ON BOTH SIDES OF EXTERIOR UTILITY SERVICES ADJACENT TO VEHICULAR TRAFFIC, INCLUDING FIRE STAND PIPE, GAS, ELECTRICAL METERS, SITE TRANSFORMERS, AND TELECOMMUNICATIONS.
- G. DIMENSIONS ARE TO FACE OF CURB.
- H. DIMENSIONS SHOWN AS MINIMUM. STARBUCKS APPROVAL REQUIRED TO MODIFY.
- I. CONDUIT SHOWN OFFSET FOR CLARITY. LOCATIONS ARE FOR REFERENCE ONLY.

ELECTRICAL NOTES

- 31. DETECTOR LOOP TO BE CENTERED ON DT WINDOW. COORDINATE WITH GENERAL CONTRACTOR, TO BE 2" BELOW DT LANE PAVEMENT.
- 32. AUDIO FOR DT SPEAKER. RUN DEDICATED 1" CONDUIT UNDERGROUND TO DT POS.
- 33. VIDEO FOR DOS AND DETECTOR LOOP WIRING TO BE RUN THROUGH DEDICATED 1" CONDUIT UNDERGROUND TO DT POS.
- 34. SPARE 1" CONDUIT STUB UP IN BOH NEAR MANAGERS WORKS STATION - FOR FUTURE DATA/SPEAKER.
- 35. SPARE 1" CONDUIT STUB UP IN BOH NEAR MANAGERS WORK STATION - FOR FUTURE AUDIO/ VIDEO AT SPEAKER POST AND DETECTOR LOOP WIRING.
- 36. LIQUID TIGHT UNDERGROUND ENCLOSURE WITH CLOSED BASE FOR FOR PULLING WIRES (IF REQUIRED BY AHJ)
- 37. DOS CANOPY LIGHT, PRE-MENU BOARD, MENU BOARD, DT ENTRY SIGNAGE, OVERHEAD CLEARANCE BAR, AND MERGE SIGNAGE TO BE RUN UNDERGROUND AND CONNECTED TO DEDICATED PANEL CIRCUIT VIA TIME CLOCK
- 38. DETECTOR LOOP TO BE CENTERED ON ORDER SPEAKER. COORDINATE WITH GENERAL CONTRACTOR, TO BE 2" BELOW DT LANE PAVEMENT.
- 39. CONDUIT(S) FOR POWER FOR TENANT'S SITE SIGNAGE, ILLUMINATED BOLLARDS AND IRRIGATION VAULT AS NEEDED.
- 40. CONDUIT(S) FOR SITE LIGHTING AS NEEDED.
- 41. POWER FOR DIGITAL ORDER SCREEN (DOS) ONLY. RUN ON DEDICATED CIRCUIT BACK TO MAIN DISTRIBUTION PANEL (MDP).

LEGEND

- LANDSCAPE AREA
- NEW CONCRETE WALKWAY
- NEW 6" (150MM) CONCRETE CURB
- CONCRETE DRIVE THRU LANE
- ACCESSIBLE PATH OF TRAVEL
- ELECTRICAL
- DATA
- VOICE

KEYED NOTES

- 1. LANDSCAPE AREA (REFER TO STARBUCKS STANDARDS)
- 2. ACCESSIBLE PATH OF TRAVEL
- 3. 6" CONCRETE CURB, TYPICAL OR WHEEL STOPS REQUIRED AT BUILDING PAD.
- 4. LOCATION FOR SITE TRANSFORMER
- 5. SITE LIGHT POLE, MAINTAIN A MINIMUM OF
 - SITE ENTRY: 3 FC
 - DRIVE THRU ENTRY: 5 FC
 - BUILDING ENTRY: 10 FC
 - PATIO: 5 FC
 - PARKING AND SIDEWALKS: 1.5 FC
 - SERVICE DOOR: 3 FC
- 6. PARKING BOLLARD
- 7. **PARKING AND DRIVE-THRU BOLLARDS** - NON-ILLUMINATED. PROVIDE NON-ILLUMINATED, PROTECTIVE BOLLARDS IN FRONT OF THE PRE-MENU BOARD, ORDER POINT, AND PICK-UP WINDOW BUMP OUT.
- 8. **DRIVE THRU LANE**: ENSURE EASY INGRESS AND EGRESS FROM MAIN CUSTOMER TRAFFIC. DO NOT BLOCK PARKING. MINIMUM (1) CAR LENGTH PRIOR TO ENTERING TRAFFIC AFTER PAY/PICKUP WINDOW. AVOID LOCATING UNSIGHTLY ITEMS, SUCH AS GREASE TRAPS OR TRASH ENCLOSURES, IN OR NEAR THE DRIVE THRU LANE.
- 9. **QUEUE LENGTH**: REVIEW SITE SPECIFIC QUEUING GUIDANCE TO DETERMINE TOTAL QUEUE LENGTH REQUIRED
 - A. **CAR STACK**: PREFERRED (7) CARS MINIMUM FROM ORDER POINT TO PICK-UP WINDOW. ALLOWS PARTNERS TIME NEEDED TO PREPARE CUSTOMER ORDER AND MAINTAIN SPEED OF SERVICE.
 - B. **ORDER TAIL**: REVIEW SITE SPECIFIC QUEUING GUIDANCE TO DETERMINE TAIL LENGTH REQUIRED. MINIMUM 3 CAR LENGTH FROM LEASE LINE TO DRIVE THRU ENTRY TO MINIMIZE TRAFFIC BACK-UP INTO STREET, DRIVEWAY, OR PARKING AREA
 - C. **CAR SPACING**: ALLOW CARS TO BE SPACED 20' ON CENTER. VERIFY CENTERLINE OF THE DRIVE THRU WINDOW TO CENTERLINE OF THE ORDER POINT OR AT THE 7TH CAR IS 120' MINIMUM.
- 10. **TRASH ENCLOSURE LOCATION**: TRASH AND RECYCLING AREA TO BE LOCATED NO MORE THAN 300 FEET FROM THE SERVICE DOOR. ENCLOSURE SHALL NOT BE UNDER OBSTRUCTIONS WHICH LIMIT ACCESS.
- 11. **PATHWAY**: PATHWAY FROM THE SERVICE DOOR TO THE ENCLOSURE SHALL BE WELL LIT. ACCESS PATHWAY FROM REAR SERVICE DOOR TO TRASH ENCLOSURE SHALL BE RAMPED (MAX. 1:20) TO ALLOW ROLLING ACCESS.
- 12. **HAULER ACCESS**: TRASH ENCLOSURE POSITIONED SO THAT HAULER CAN ACCESS CONTAINERS BY FRONT LOAD REMOVAL. TYPICALLY LEAVE 40-45 FEET UNOBSTRUCTED AREA FOR 90-DEGREE TURN. CHECK REQUIREMENTS WITH LOCAL TRASH REMOVAL SERVICES.
- 13. **SITE PAVING**: PROVIDE 6" THICK SEALED CONCRETE PAVING AT TRASH ENCLOSURE. TO EXTEND 12'-0" FROM FRONT EDGE OF ENCLOSURE TOWARDS HAULER ACCESS POINT.
- 14. **HOSE BIB**: INCLUDE DRAIN AND HOSE BIB IF ENCLOSURE LOCATED MORE THAN 50 FEET FROM REAR SERVICE DOOR.
- 15. **PATIO SEATING AND SITE AMENITIES**
 - A. **PATIO AND SEATING**: PROVIDE OUTDOOR SEATING AREA, WITH EASY ACCESS FROM TO CAFE SPACE. PROVIDE EXTERIOR RATED SEATING, TABLES, AND ACCESSORIES AS SPECIFIED IN THE STARBUCKS DESIGN CATALOG. PROVIDE ACCESSIBLE SEATING (MIN. 5%) OR PER LOCAL REQUIREMENTS.
 - B. **RAILING AND SCREENING**: PROVIDE RAILING, VEGETATED BUFFER, AND/OR SCREENING ELEMENT BETWEEN PATIO AND DRIVE THRU LANE. INCLUDE ADDITIONAL SCREENING AS NEEDED TO REDUCE NOISE AND LIGHT TRANSFER TO ADJACENT SITES.
 - C. **BIKE RACKS**: INSTALL BIKE RACK(S) NEAR MAIN ENTRANCE TO ACCOMMODATE ALTERNATIVE TRANSIT TO THE SITE. LOCATE BIKE RACK AS TO LIMIT PEDESTRIAN DISRUPTION AND MAINTAIN ACCESSIBLE PROVISIONS OF THE SITE
 - D. **ACCESSIBLE PARKING SIGNAGE**: PROVIDE SIGNAGE AND APPROPRIATE AMOUNT OF ADA PARKING AS REQUIRED BY JURISDICTION.
 - E. **MOP/CURBSIDE/PULL FORWARD PARKING SIGN**: PROVIDE APPROPRIATE PARKING SIGN, AS DIRECTED BY STARBUCKS.
 - F. **PEDESTRIAN RAMP**: ACCESSIBLE PEDESTRIAN CONCRETE RAMP WITH A TRANSITION TO ZERO CURB.
 - G. **SITE AND DRIVE-THRU (DT) SIGNAGE**: DRIVE THRU DIRECTIONAL SIGNAGE SHOULD BE CLEARLY VISIBLE TO PROVIDE AN EXPERIENCE THAT IS SAFE, CONVENIENT, EFFICIENT, AND EASY TO NAVIGATE. ENSURE LANDSCAPING DOES NOT HINDER SIGNAGE VISIBILITY.
 - H. **MONUMENT AND PYLON SIGNS**: ON SPECIFIC SITE CONDITIONS AND LANDLORD REQUIREMENTS, PLACEMENT SHOULD MAXIMIZE VISIBILITY AT MAJOR THOROUGH FARES. CONSIDER DIRECTION OF TRAFFIC, SITE LINES, OBSTRUCTIONS, AND ELEVATION OF SURROUNDING CONSTRUCTION.
 - I. **DT DIRECTIONAL ARROW SIGN**: LOCATE AT POINTS WITHIN THE SITE TO PROVIDE DIRECTIONAL WAYFINDING TOWARDS DT LANE. LOCATE SIGNAGE TO MAXIMIZE VISIBILITY FROM PARKING LOT ENTRY AND MAIN CIRCULATION PATHS. (DIMENSION LOCATION FROM CURB)
 - J. **DT DIRECTIONAL EXIT/THANK YOU SIGN**: LOCATE AT EXIT OF DT LANE, ON PASSENGER SIDE, WITH "EXIT ONLY" SIDE FACING PARKING LOT. (DIMENSION LOCATION FROM CURB)
 - K. **CLEARANCE BAR**: LOCATE AT ENTRANCE TO DT LANE. SET CLEARANCE HEIGHT BASED ON MINIMUM OBSTRUCTION HEIGHT ALONG PATH OF VEHICLE TRAVEL, INCLUDING BUILDING AWNINGS AND/OR ORDER POINT CANOPY. (DIMENSION 12" FROM CURB)
 - L. **WAYFINDING PAVEMENT GRAPHICS**: HIGH VISIBILITY DIRECTIONAL GRAPHICS, HEAT-APPLIED OR PAINTED ON PAVEMENT.
 - A. **DOUBLE ARROWS**: SPACE EVENLY WITHIN VEHICULAR CIRCULATION. DO NOT BLOCK PEDESTRIAN PATHS.
 - B. **ENTRY/EXIT DT ARROWS**: CENTER WITHIN TYPICAL DT LANE. ALIGN EDGE OF GRAPHIC WITH CURB AND ENTRY/EXIT.
 - M. **DIGITAL ORDER SCREEN (DOS) AND MENU**: LOCATE ORDER POINT CENTERED ON THE 7TH CAR IN THE QUEUE. SITUATE ORDER POINT SO THAT THE MICROPHONE AND SPEAKER FACE AWAY FROM TRAFFIC, AND CARS CAN PULL UP CLOSE, AVOIDING TIGHT TURNS.
 - A. **ALTERNATE**: SPEAKER POST IS AVAILABLE IF NEEDED DUE TO SPACE CONSTRAINTS, LANDLORD REQUIREMENTS, SITE RESTRICTIONS, OR BUDGET.
 - N. **MENU BOARD**: THE 5-PANEL MENU BOARD IS THE PREFERRED STANDARD. LOCATE ADJACENT TO THE DOS. DO NOT LOCATE ON TURNING RADIUS. DO NOT OBSTRUCT VIEW OF MENU BOARD WITH DOS/CANOPY. CONSIDER SCREENING BEHIND MENU BOARD IF ADJACENT TO EXTERIOR SEATING, SIDEWALK, OR PEDESTRIAN WAY.
 - A. **ALTERNATE**: 3-PANEL BOARD IS AVAILABLE IF SITE RESTRICTIONS LIMIT USE OF 5-PANEL.
 - O. **DT PRE-MENU**: THE PREVIEW BOARD IS AVAILABLE IN WALL-MOUNTED AND FREE-STANDING OPTIONS. LOCATE 1-2 CAR LENGTHS BEFORE ORDER POINT.
 - A. **ALTERNATE**: IF NO SPACE IS AVAILABLE IN THE DT LANE, THIS ITEM CAN BE REMOVED.
 - P. **CURB TRANSITION**: AREA OF TRANSITION FROM LANDSCAPE TO CONCRETE. ADD STRIPING AS APPLICABLE.

DESIGN DEVELOPMENT ONLY - NOT INTENDED FOR CONSTRUCTION USE



STARBUCKS
2401 UTAH AVENUE SOUTH
SEATTLE, WASHINGTON 98134
(206) 318-1575

THESE DRAWINGS AND THE PROJECT MANUAL ARE CONFIDENTIAL AND SHALL REMAIN THE SOLE PROPERTY OF STARBUCKS CORPORATION, WHICH IS THE OWNER OF THE COPYRIGHT IN THIS WORK. THEY SHALL NOT BE REPRODUCED (IN WHOLE OR IN PART), SHARED WITH THIRD PARTIES OR USED IN ANY MANNER ON OTHER PROJECTS OR EXTENSIONS TO THIS PROJECT WITHOUT THE PRIOR WRITTEN CONSENT OF STARBUCKS CORPORATION. THESE DRAWINGS AND SPECIFICATIONS ARE INTENDED TO EXPRESS DESIGN INTENT FOR A PROTOTYPICAL STARBUCKS STORE (WHICH IS SUBJECT TO CHANGE AT ANYTIME) AND DO NOT REFLECT ACTUAL SITE CONDITIONS. NEITHER PARTY SHALL HAVE ANY OBLIGATION NOR LIABILITY TO THE OTHER (EXCEPT STATED ABOVE) UNTIL A WRITTEN AGREEMENT IS FULLY EXECUTED BY BOTH PARTIES.

STARBUCKS TEMPLATE VERSION: I2022.04.22

ARCHITECT OF RECORD

THIS DRAWING IS A DESIGN DEVELOPMENT DOCUMENT. SITE SPECIFIC MODIFICATIONS MADE UNDER THE RESPONSIBLE CHARGE OF THE ARCHITECT AND/OR ENGINEER-OF-RECORD WILL BE REQUIRED PRIOR TO USING THIS DOCUMENT FOR BIDDING, PERMITTING, OR CONSTRUCTION.

PROJECT NAME:
PROJECT NAME

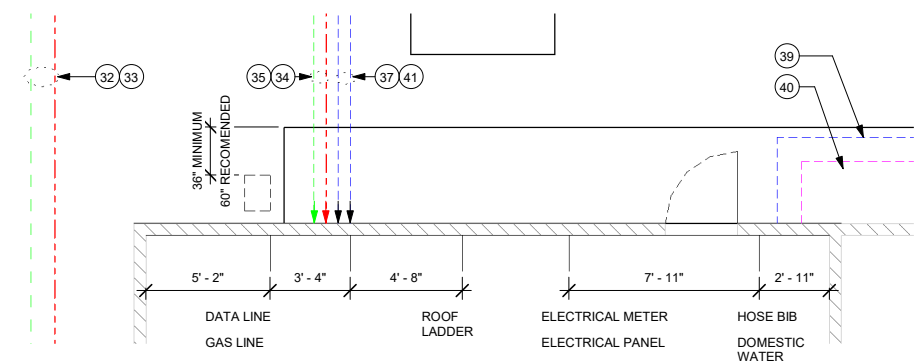
PROJECT ADDRESS:

STORE #:
PROJECT #:
ISSUE DATE: 07-13-2022
DESIGN MANAGER:
PRODUCTION DESIGNER:
CHECKED BY:

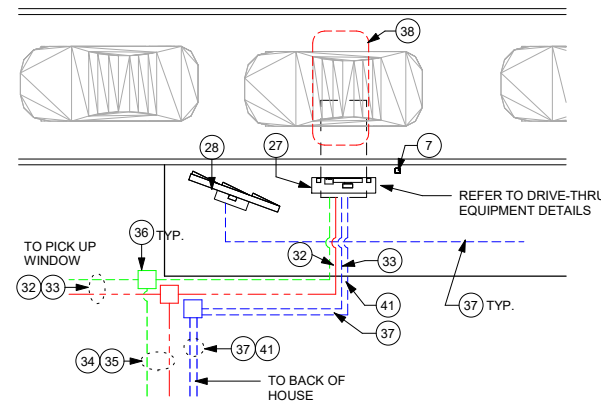
Revision Schedule			
Rev	Date	By	Description

SHEET TITLE:
STANDARD SITE - CORNER - SINGLE LANE
SCALE: AS SHOWN

SHEET NUMBER:
1B



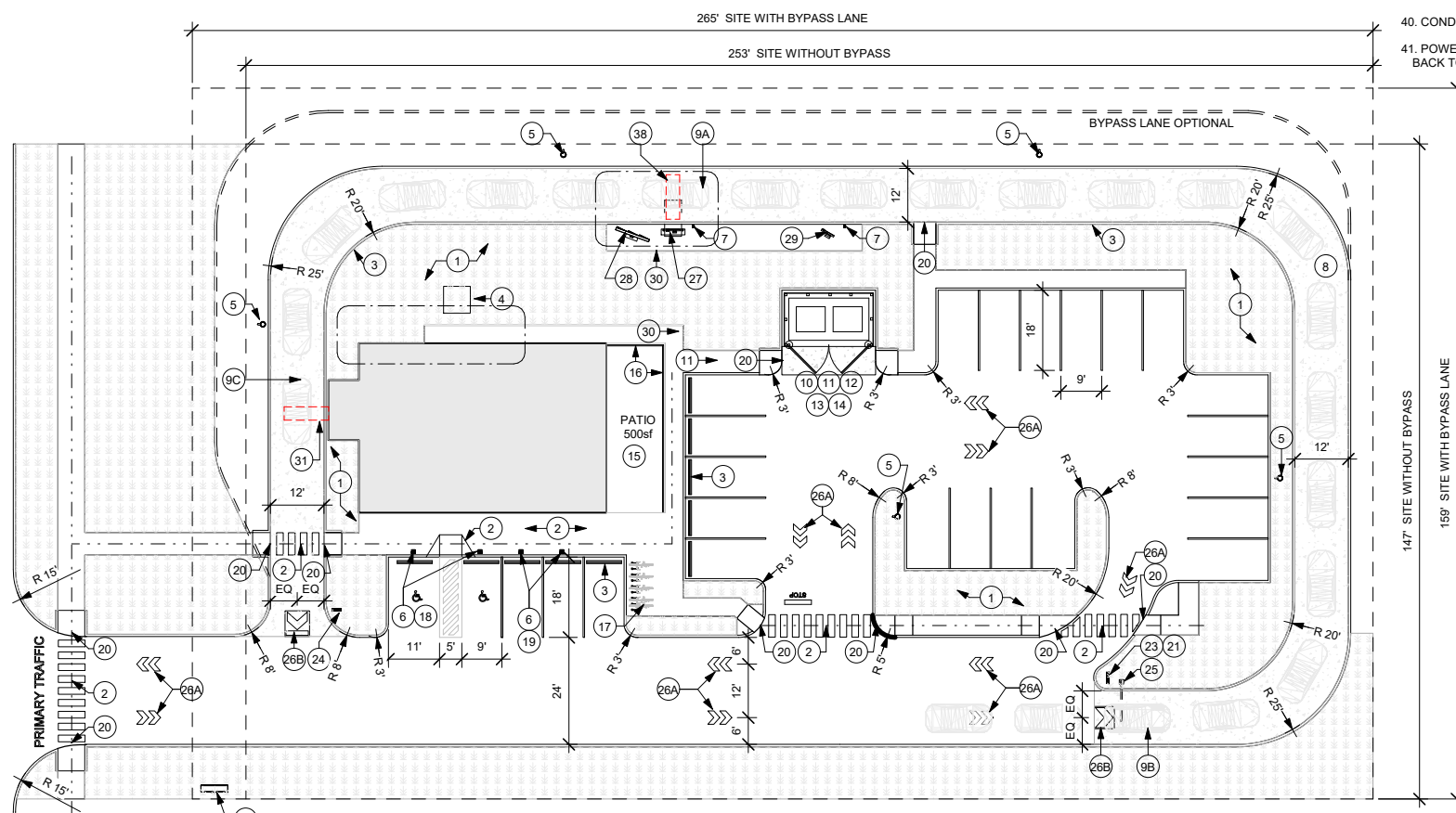
UTILITY ENTRY PLAN



MENU BOARD DETAIL

LEGEND

- LANDSCAPE AREA
- NEW CONCRETE WALKWAY
- NEW 6" (150MM) CONCRETE CURB
- CONCRETE DRIVE THRU LANE
- ACCESSIBLE PATH OF TRAVEL
- ELECTRICAL
- DATA
- VOICE



STANDARD SITE - MID BLOCK - SINGLE LANE - HIGH VOLUME

Scale: 1" = 20'-0"

GENERAL NOTES

- A. BUILDING FOOTPRINT APPROXIMATELY 2200 SF, ON 0.85 ACRES, TYPICAL.
- B. PREFERRED SITE LOCATION ON MAIN PATH OF TRAFFIC WITH EASY INGRESS AND EGRESS. MORNING COMMUTE SIDE PREFERRED OF STREET.
- C. BUILDING SHOULD BE LOCATED ON SITE TO MAXIMIZE BUILDING PROMINENCE, MAXIMIZE DRIVE THRU QUEUE LENGTH, AND ALLOW EASY ENTRY/EXIT FROM SITE.
- D. BUILDING TO HAVE CLEAR LINE OF SIGHT FROM VEHICULAR AND PEDESTRIAN TRAFFIC. IT SHOULD BE LOCATED WITHIN 5 MILES OF A FREEWAY, WITH POSTED SPEED LIMIT OF MAIN STREET BELOW 55 MPH.
- E. SITE INCLUDES ADEQUATE PARKING TO MEET CUSTOMER AND EMPLOYEE NEEDS. INCLUDE 22 STALL MINIMUM DEDICATED PARKING (SUBJECT TO JURISDICTIONAL REQUIREMENTS).
- F. ALL UTILITIES ENTRIES TO BE LOCATED AT THE REAR OF BUILDING (AS SHOWN). PROVIDE PROTECTIVE BOLLARDS ON BOTH SIDES OF EXTERIOR UTILITY SERVICES ADJACENT TO VEHICULAR TRAFFIC, INCLUDING FIRE STAND PIPE, GAS, ELECTRICAL METERS, SITE TRANSFORMERS, AND TELECOMMUNICATIONS.
- G. DIMENSIONS ARE TO FACE OF CURB.
- H. DIMENSIONS SHOWN AS MINIMUM. STARBUCKS APPROVAL REQUIRED TO MODIFY.
- I. CONDUIT SHOWN OFFSET FOR CLARITY. LOCATIONS ARE FOR REFERENCE ONLY.

ELECTRICAL NOTES

31. DETECTOR LOOP TO BE CENTERED ON DT WINDOW. COORDINATE WITH GENERAL CONTRACTOR, TO BE 2" BELOW DT LANE PAVEMENT.
32. AUDIO FOR DT SPEAKER. RUN DEDICATED 1" CONDUIT UNDERGROUND TO DT POS.
33. VIDEO FOR DOS AND DETECTOR LOOP WIRING TO BE RUN THROUGH DEDICATED 1" CONDUIT UNDERGROUND TO DT POS.
34. SPARE 1" CONDUIT STUB UP IN BOH NEAR MANAGERS WORKS STATION - FOR FUTURE DATA/SPEAKER.
35. SPARE 1" CONDUIT STUB UP IN BOH NEAR MANAGERS WORK STATION - FOR FUTURE AUDIO/ VIDEO AT SPEAKER POST AND DETECTOR LOOP WIRING.
36. LIQUID TIGHT UNDERGROUND ENCLOSURE WITH CLOSED BASE FOR FOR PULLING WIRES (IF REQUIRED BY AHJ)
37. DOS CANOPY LIGHT, PRE-MENU BOARD, MENU BOARD, DT ENTRY SIGNAGE, OVERHEAD CLEARANCE BAR, AND MERGE SIGNAGE TO BE RUN UNDERGROUND AND CONNECTED TO DEDICATED PANEL CIRCUIT VIA TIME CLOCK
38. DETECTOR LOOP TO BE CENTERED ON ORDER SPEAKER. COORDINATE WITH GENERAL CONTRACTOR, TO BE 2" BELOW DT LANE PAVEMENT.
39. CONDUIT(S) FOR POWER FOR TENANT'S SITE SIGNAGE, ILLUMINATED BOLLARDS AND IRRIGATION VAULT AS NEEDED.
40. CONDUIT(S) FOR SITE LIGHTING AS NEEDED.
41. POWER FOR DIGITAL ORDER SCREEN (DOS) ONLY. RUN ON DEDICATED CIRCUIT BACK TO MAIN DISTRIBUTION PANEL (MDP).

KEYED NOTES

1. LANDSCAPE AREA (REFER TO STARBUCKS STANDARDS)
2. ACCESSIBLE PATH OF TRAVEL
3. 6" CONCRETE CURB, TYPICAL OR WHEEL STOPS REQUIRED AT BUILDING PAD.
4. LOCATION FOR SITE TRANSFORMER
5. SITE LIGHT POLE, MAINTAIN A MINIMUM OF
 - . SITE ENTRY: 3 FC
 - . DRIVE THRU ENTRY: 5 FC
 - . BUILDING ENTRY: 10 FC
 - . PATIO: 5 FC
 - . PARKING AND SIDEWALKS: 1.5 FC
 - . SERVICE DOOR: 3 FC
6. PARKING BOLLARD
7. **PARKING AND DRIVE-THRU**
 BOLLARDS - NON-ILLUMINATED; PROVIDE NON-ILLUMINATED, PROTECTIVE BOLLARDS IN FRONT OF THE PRE-MENU BOARD, ORDER POINT, AND PICK-UP WINDOW BUMP OUT.
8. **DRIVE THRU LANE**: ENSURE EASY INGRESS AND EGRESS FROM MAIN CUSTOMER TRAFFIC. DO NOT BLOCK PARKING. MINIMUM (1) CAR LENGTH PRIOR TO ENTERING TRAFFIC AFTER PICKUP WINDOW. AVOID LOCATING UNSIGHTLY ITEMS, SUCH AS GREASE TRAPS OR TRASH ENCLOSURES, IN OR NEAR THE DRIVE THRU LANE.
9. **QUEUE LENGTH**: REVIEW SITE SPECIFIC QUEUING GUIDANCE TO DETERMINE TOTAL QUEUE LENGTH REQUIRED
 - A. **CAR STACK**: PREFERRED (7) CARS MINIMUM FROM ORDER POINT TO PICK-UP WINDOW. ALLOWS PARTNERS TIME NEEDED TO PREPARE CUSTOMER ORDER AND MAINTAIN SPEED OF SERVICE.
 - B. **ORDER TAIL**: REVIEW SITE SPECIFIC QUEUING GUIDANCE TO DETERMINE TAIL LENGTH REQUIRED. MINIMUM 3 CAR LENGTH FROM LEASE LINE TO DRIVE THRU ENTRY TO MINIMIZE TRAFFIC BACK-UP INTO STREET, DRIVEWAY, OR PARKING AREA
 - C. **CAR SPACING**: ALLOW CARS TO BE SPACED 20' ON CENTER. VERIFY CENTERLINE OF THE DRIVE THRU WINDOW TO CENTERLINE OF THE ORDER POINT OR AT THE 7TH CAR IS 120' MINIMUM.
10. **TRASH ENCLOSURE**
 LOCATION: TRASH AND RECYCLING AREA TO BE LOCATED NO MORE THAN 300 FEET FROM THE SERVICE DOOR. ENCLOSURE SHALL NOT BE UNDER OBSTRUCTIONS WHICH LIMIT ACCESS.
11. **PATHWAY**: PATHWAY FROM THE SERVICE DOOR TO THE ENCLOSURE SHALL BE WELL LIT. ACCESS PATHWAY FROM REAR SERVICE DOOR TO TRASH ENCLOSURE SHALL BE RAMPED (MAX. 1:20) TO ALLOW ROLLING ACCESS.
12. **HAULER ACCESS**: TRASH ENCLOSURE POSITIONED SO THAT HAULER CAN ACCESS CONTAINERS BY FRONT LOAD REMOVAL. TYPICALLY LEAVE 40-45 FEET UNOBSTRUCTED AREA FOR 90-DEGREE TURN. CHECK REQUIREMENTS WITH LOCAL TRASH REMOVAL SERVICES.
13. **SITE PAVING**: PROVIDE 6" THICK SEALED CONCRETE PAVING AT TRASH ENCLOSURE, TO EXTEND 12'-0" FROM FRONT EDGE OF ENCLOSURE TOWARDS HAULER ACCESS POINT.
14. **HOSE BIB**: INCLUDE DRAIN AND HOSE BIB IF ENCLOSURE LOCATED MORE THAN 50 FEET FROM REAR SERVICE DOOR.
15. **PATIO SEATING AND SITE AMENITIES**
 PATIO AND SEATING: PROVIDE OUTDOOR SEATING AREA, WITH EASY ACCESS FROM TO CAFE SPACE. PROVIDE EXTERIOR RATED SEATING, TABLES, AND ACCESSORIES AS SPECIFIED IN THE STARBUCKS DESIGN CATALOG. PROVIDE ACCESSIBLE SEATING (MIN. 5%) OR PER LOCAL REQUIREMENTS.
16. **RAILING AND SCREENING**: PROVIDE RAILING, VEGETATED BUFFER, AND/OR SCREENING ELEMENT BETWEEN PATIO AND DRIVE THRU LANE. INCLUDE ADDITIONAL SCREENING AS NEEDED TO REDUCE NOISE AND LIGHT TRANSFER TO ADJACENT SITES.
17. **BIKE RACKS**: INSTALL BIKE RACK(S) NEAR MAIN ENTRANCE TO ACCOMMODATE ALTERNATIVE TRANSIT TO THE SITE. LOCATE BIKE RACK AS TO LIMIT PEDESTRIAN DISRUPTION AND MAINTAIN ACCESSIBLE PROVISIONS OF THE SITE
18. **ACCESSIBLE PARKING SIGNAGE**: PROVIDE SIGNAGE AND APPROPRIATE AMOUNT OF ADA PARKING AS REQUIRED BY JURISDICTION.
19. **MOP/CURBSIDE/PULL FORWARD PARKING SIGN**: PROVIDE APPROPRIATE PARKING SIGN, AS DIRECTED BY STARBUCKS.
20. **PEDESTRIAN RAMP**: ACCESSIBLE PEDESTRIAN CONCRETE RAMP WITH A TRANSITION TO ZERO CURB.
21. **SITE AND DRIVE-THRU (DT) SIGNAGE**
 DRIVE THRU DIRECTIONAL SIGNAGE SHOULD BE CLEARLY VISIBLE TO PROVIDE AN EXPERIENCE THAT IS SAFE, CONVENIENT, EFFICIENT, AND EASY TO NAVIGATE. ENSURE LANDSCAPING DOES NOT HINDER SIGNAGE VISIBILITY.
22. **MONUMENT AND PYLON SIGNS**
 ON SPECIFIC SITE CONDITIONS AND LANDLORD REQUIREMENTS. PLACEMENT SHOULD MAXIMIZE VISIBILITY AT MAJOR THOROUGH FARES. CONSIDER DIRECTION OF TRAFFIC, SITE LINES, OBSTRUCTIONS, AND ELEVATION OF SURROUNDING CONSTRUCTION.
23. **DT DIRECTIONAL ARROW SIGN**: LOCATE AT POINTS WITHIN THE SITE TO PROVIDE DIRECTIONAL WAYFINDING TOWARDS DT LANE. LOCATE SIGNAGE TO MAXIMIZE VISIBILITY FROM PARKING LOT ENTRY AND MAIN CIRCULATION PATHS. (DIMENSION LOCATION FROM CURB)
24. **DT DIRECTIONAL EXIT/THANK YOU SIGN**: LOCATE AT EXIT OF DT LANE, ON PASSENGER SIDE, WITH "EXIT ONLY" SIDE FACING PARKING LOT. (DIMENSION LOCATION FROM CURB)
25. **CLEARANCE BAR**: LOCATE AT ENTRANCE TO DT LANE. SET CLEARANCE HEIGHT BASED ON MINIMUM OBSTRUCTION HEIGHT ALONG PATH OF VEHICLE TRAVEL, INCLUDING BUILDING AWNINGS AND/OR ORDER POINT CANOPY. (DIMENSION 12" FROM CURB)
26. **WAYFINDING PAVEMENT GRAPHICS**: HIGH VISIBILITY DIRECTIONAL GRAPHICS, HEAT-APPLIED OR PAINTED ON PAVEMENT.
 - A. **DOUBLE ARROWS**: SPACE EVENLY WITHIN VEHICULAR CIRCULATION. DO NOT BLOCK PEDESTRIAN PATHS.
 - B. **ENTRY/EXIT DT ARROWS**: CENTER WITHIN TYPICAL DT LANE. ALIGN EDGE OF GRAPHIC WITH CURB AND ENTRY/EXIT.
27. **DIGITAL ORDER SCREEN (DOS) AND MENU**
 DIGITAL ORDER SCREEN WITH CANOPY: LOCATE ORDER POINT CENTERED ON THE 7TH CAR IN THE QUEUE. SITUATE ORDER POINT SO THAT THE MICROPHONE AND SPEAKER FACE AWAY FROM TRAFFIC, AND CARS CAN PULL UP CLOSE, AVOIDING TIGHT TURNS.
 - A. **ALTERNATE**: SPEAKER POST IS AVAILABLE IF NEEDED DUE TO SPACE CONSTRAINTS, LANDLORD REQUIREMENTS, SITE RESTRICTIONS, OR BUDGET.
28. **MENU BOARD**: THE 5-PANEL MENU BOARD IS THE PREFERRED STANDARD. LOCATE ADJACENT TO THE DOS. DO NOT LOCATE ON TURNING RADIUS. DO NOT OBSTRUCT VIEW OF MENU BOARD WITH DOS/CANOPY. CONSIDER SCREENING BEHIND MENU BOARD IF ADJACENT TO EXTERIOR SEATING, SIDEWALK, OR PEDESTRIAN WAY.
 - A. **ALTERNATE**: 3-PANEL BOARD IS AVAILABLE IF SITE RESTRICTIONS LIMIT USE OF 5-PANEL.
29. **DT PRE-MENU**: THE PREVIEW BOARD IS AVAILABLE IN WALL-MOUNTED AND FREE-STANDING OPTIONS. LOCATE 1-2 CAR LENGTHS BEFORE ORDER POINT.
 - A. **ALTERNATE**: IF NO SPACE IS AVAILABLE IN THE DT LANE, THIS ITEM CAN BE REMOVED.
30. **CURB TRANSITION**: AREA OF TRANSITION FROM LANDSCAPE TO CONCRETE. ADD STRIPING AS APPLICABLE.

DESIGN DEVELOPMENT ONLY - NOT INTENDED FOR CONSTRUCTION USE



STARBUCKS
 2401 UTAH AVENUE SOUTH
 SEATTLE, WASHINGTON 98134
 (206) 318-1575

THESE DRAWINGS AND THE PROJECT MANUAL ARE CONFIDENTIAL AND SHALL REMAIN THE SOLE PROPERTY OF STARBUCKS CORPORATION, WHICH IS THE OWNER OF THE COPYRIGHT IN THIS WORK. THEY SHALL NOT BE REPRODUCED (IN WHOLE OR IN PART), SHARED WITH THIRD PARTIES OR USED IN ANY MANNER ON OTHER PROJECTS OR EXTENSIONS TO THIS PROJECT WITHOUT THE PRIOR WRITTEN CONSENT OF STARBUCKS CORPORATION. THESE DRAWINGS AND SPECIFICATIONS ARE INTENDED TO EXPRESS DESIGN INTENT FOR A PROTOTYPICAL STARBUCKS STORE (WHICH IS SUBJECT TO CHANGE AT ANYTIME) AND DO NOT REFLECT ACTUAL SITE CONDITIONS. NEITHER PARTY SHALL HAVE ANY OBLIGATION NOR LIABILITY TO THE OTHER (EXCEPT STATED ABOVE) UNTIL A WRITTEN AGREEMENT IS FULLY EXECUTED BY BOTH PARTIES.

STARBUCKS TEMPLATE VERSION: I2022.04.22

ARCHITECT OF RECORD
 THIS DRAWING IS A DESIGN DEVELOPMENT DOCUMENT. SITE SPECIFIC MODIFICATIONS MADE UNDER THE RESPONSIBLE CHARGE OF THE ARCHITECT AND/OR ENGINEER-OF-RECORD WILL BE REQUIRED PRIOR TO USING THIS DOCUMENT FOR BIDDING, PERMITTING, OR CONSTRUCTION.

PROJECT NAME:
PROJECT NAME

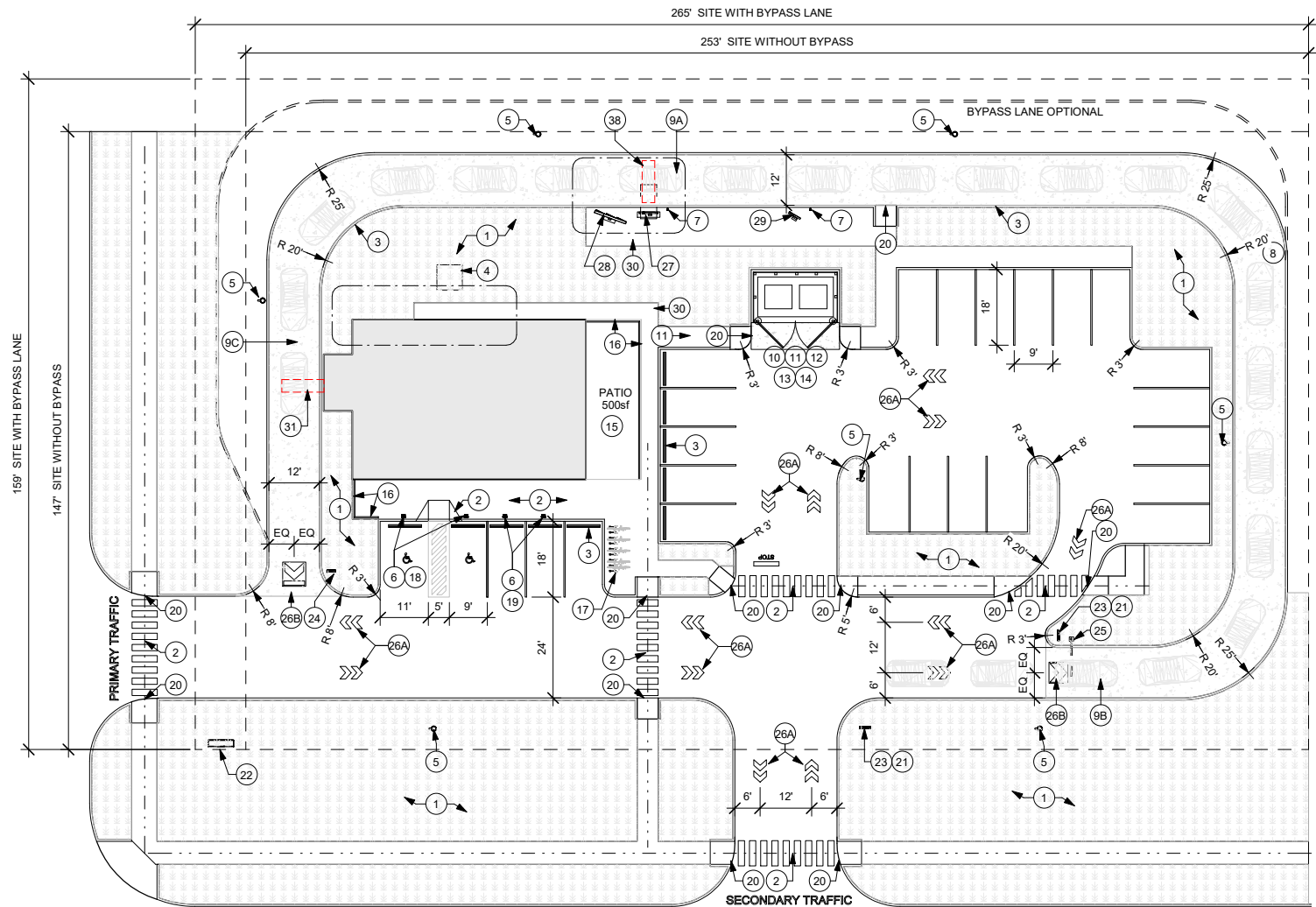
PROJECT ADDRESS:
 PROJECT ADDRESS:

STORE #:
 PROJECT #:
 ISSUE DATE: 07-13-2022
 DESIGN MANAGER:
 PRODUCTION DESIGNER:
 CHECKED BY:

Revision Schedule			
Rev	Date	By	Description

SHEET TITLE:
STANDARD SITE - MID BLOCK - SINGLE LANE - HIGH VOLUME

SHEET NUMBER:
4B



GENERAL NOTES

- A. BUILDING FOOTPRINT APPROXIMATELY 2200 SF, ON 0.85 ACRES, TYPICAL.
- B. PREFERRED SITE LOCATION ON MAIN PATH OF TRAFFIC WITH EASY INGRESS AND EGRESS. MORNING COMMUTE SIDE PREFERRED OF STREET.
- C. BUILDING SHOULD BE LOCATED ON SITE TO MAXIMIZE BUILDING PROMINENCE, MAXIMIZE DRIVE THRU QUEUE LENGTH, AND ALLOW EASY ENTRY/EXIT FROM SITE.
- D. BUILDING TO HAVE CLEAR LINE OF SIGHT FROM VEHICULAR AND PEDESTRIAN TRAFFIC. IT SHOULD BE LOCATED WITHIN 5 MILES OF A FREEWAY, WITH POSTED SPEED LIMIT OF MAIN STREET BELOW 55 MPH.
- E. SITE INCLUDES ADEQUATE PARKING TO MEET CUSTOMER AND EMPLOYEE NEEDS. INCLUDE 22 STALL MINIMUM DEDICATED PARKING (SUBJECT TO JURISDICTIONAL REQUIREMENTS).
- F. ALL UTILITIES ENTRIES TO BE LOCATED AT THE REAR OF BUILDING (AS SHOWN). PROVIDE PROTECTIVE BOLLARDS ON BOTH SIDES OF EXTERIOR UTILITY SERVICES ADJACENT TO VEHICULAR TRAFFIC, INCLUDING FIRE STAND PIPE, GAS, ELECTRICAL METERS, SITE TRANSFORMERS, AND TELECOMMUNICATIONS.
- G. DIMENSIONS ARE TO FACE OF CURB.
- H. DIMENSIONS SHOWN AS MINIMUM. STARBUCKS APPROVAL REQUIRED TO MODIFY.
- I. CONDUIT SHOWN OFFSET FOR CLARITY. LOCATIONS ARE FOR REFERENCE ONLY.

ELECTRICAL NOTES

- 31. DETECTOR LOOP TO BE CENTERED ON DT WINDOW. COORDINATE WITH GENERAL CONTRACTOR, TO BE 2" BELOW DT LANE PAVEMENT.
- 32. AUDIO FOR DT SPEAKER. RUN DEDICATED 1" CONDUIT UNDERGROUND TO DT POS.
- 33. VIDEO FOR DOS AND DETECTOR LOOP WIRING TO BE RUN THROUGH DEDICATED 1" CONDUIT UNDERGROUND TO DT POS
- 34. SPARE 1" CONDUIT STUB UP IN BOH NEAR MANAGERS WORKS STATION - FOR FUTURE DATA/SPEAKER.
- 35. SPARE 1" CONDUIT STUB UP IN BOH NEAR MANAGERS WORK STATION - FOR FUTURE AUDIO/ VIDEO AT SPEAKER POST AND DETECTOR LOOP WIRING.
- 36. LIQUID TIGHT UNDERGROUND ENCLOSURE WITH CLOSED BASE FOR FOR PULLING WIRES (IF REQUIRED BY AHJ)
- 37. DOS CANOPY LIGHT, PRE-MENU BOARD, MENU BOARD, DT ENTRY SIGNAGE, OVERHEAD CLEARANCE BAR, AND MERGE SIGNAGE TO BE RUN UNDERGROUND AND CONNECTED TO DEDICATED PANEL CIRCUIT VIA TIME CLOCK
- 38. DETECTOR LOOP TO BE CENTERED ON ORDER SPEAKER. COORDINATE WITH GENERAL CONTRACTOR, TO BE 2" BELOW DT LANE PAVEMENT.
- 39. CONDUIT(S) FOR POWER FOR TENANT'S SITE SIGNAGE, ILLUMINATED BOLLARDS AND IRRIGATION VAULT AS NEEDED.
- 40. CONDUIT(S) FOR SITE LIGHTING AS NEEDED.
- 41. POWER FOR DIGITAL ORDER SCREEN (DOS) ONLY. RUN ON DEDICATED CIRCUIT BACK TO MAIN DISTRIBUTION PANEL (MDP).

KEYED NOTES

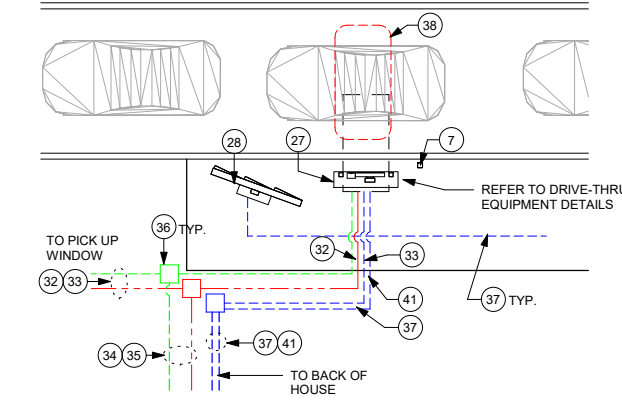
- 1. LANDSCAPE AREA (REFER TO STARBUCKS STANDARDS)
- 2. ACCESSIBLE PATH OF TRAVEL
- 3. 6" CONCRETE CURB, TYPICAL OR WHEEL STOPS REQUIRED AT BUILDING PAD.
- 4. LOCATION FOR SITE TRANSFORMER
- 5. SITE LIGHT POLE, MAINTAIN A MINIMUM OF
 - SITE ENTRY: 3 FC
 - DRIVE THRU ENTRY: 5 FC
 - BUILDING ENTRY: 10 FC
 - PATIO: 5 FC
 - PARKING AND SIDEWALKS: 1.5 FC
 - SERVICE DOOR: 3 FC
- 6. PARKING BOLLARD
- PARKING AND DRIVE-THRU**
- 7. BOLLARDS - NON-ILLUMINATED: PROVIDE NON-ILLUMINATED, PROTECTIVE BOLLARDS IN FRONT OF THE PRE-MENU BOARD, ORDER POINT, AND PICK-UP WINDOW BUMP OUT.
- 8. DRIVE THRU LANE: ENSURE EASY INGRESS AND EGRESS FROM MAIN CUSTOMER TRAFFIC. DO NOT BLOCK PARKING. MINIMUM (1) CAR LENGTH PRIOR TO ENTERING TRAFFIC AFTER PAY/PICKUP WINDOW. AVOID LOCATING UNSIGHTLY ITEMS, SUCH AS GREASE TRAPS OR TRASH ENCLOSURES, IN OR NEAR THE DRIVE THRU LANE.
- 9. QUEUE LENGTH: REVIEW SITE SPECIFIC QUEUING GUIDANCE TO DETERMINE TOTAL QUEUE LENGTH REQUIRED
 - A. CAR STACK: PREFERRED (7) CARS MINIMUM FROM ORDER POINT TO PICK-UP WINDOW. ALLOWS PARTNER'S TIME NEEDED TO PREPARE CUSTOMER ORDER AND MAINTAIN SPEED OF SERVICE.
 - B. ORDER TAIL: REVIEW SITE SPECIFIC QUEUING GUIDANCE TO DETERMINE TAIL LENGTH REQUIRED. MINIMUM 3 CAR LENGTH FROM LEASE LINE TO DRIVE THRU ENTRY TO MINIMIZE TRAFFIC BACK-UP INTO STREET, DRIVEWAY, OR PARKING AREA
 - C. CAR SPACING: ALLOW CARS TO BE SPACED 20' ON CENTER. VERIFY CENTERLINE OF THE DRIVE THRU WINDOW TO CENTERLINE OF THE ORDER POINT OR AT THE 7TH CAR IS 120' MINIMUM.
- TRASH ENCLOSURE**
- 10. LOCATION: TRASH AND RECYCLING AREA TO BE LOCATED NO MORE THAN 300 FEET FROM THE SERVICE DOOR. ENCLOSURE SHALL NOT BE UNDER OBSTRUCTIONS WHICH LIMIT ACCESS.
- 11. PATHWAY: PATHWAY FROM THE SERVICE DOOR TO THE ENCLOSURE SHALL BE WELL LIT. ACCESS PATHWAY FROM REAR SERVICE DOOR TO TRASH ENCLOSURE SHALL BE RAMPED (MAX. 1:20) TO ALLOW ROLLING ACCESS.
- 12. HAULER ACCESS: TRASH ENCLOSURE POSITIONED SO THAT HAULER CAN ACCESS CONTAINERS BY FRONT LOAD REMOVAL. TYPICALLY LEAVE 40-45 FEET UNOBSTRUCTED AREA FOR 90-DEGREE TURN. CHECK REQUIREMENTS WITH LOCAL TRASH REMOVAL SERVICES.
- 13. SITE PAVING: PROVIDE 6" THICK SEALED CONCRETE PAVING AT TRASH ENCLOSURE. TO EXTEND 12'-0" FROM FRONT EDGE OF ENCLOSURE TOWARDS HAULER ACCESS POINT.
- 14. HOSE BIB: INCLUDE DRAIN AND HOSE BIB IF ENCLOSURE LOCATED MORE THAN 50 FEET FROM REAR SERVICE DOOR.
- PATIO, SEATING AND SITE AMENITIES**
- 15. PATIO AND SEATING: PROVIDE OUTDOOR SEATING AREA, WITH EASY ACCESS FROM TO CAFE SPACE. PROVIDE EXTERIOR RATED SEATING, TABLES, AND ACCESSORIES AS SPECIFIED IN THE STARBUCKS DESIGN CATALOG. PROVIDE ACCESSIBLE SEATING (MIN. 5%) OR PER LOCAL REQUIREMENTS.
- 16. RAILING AND SCREENING: PROVIDE RAILING, VEGETATED BUFFER, AND/OR SCREENING ELEMENT BETWEEN PATIO AND DRIVE THRU LANE. INCLUDE ADDITIONAL SCREENING AS NEEDED TO REDUCE NOISE AND LIGHT TRANSFER TO ADJACENT SITES.
- 17. BIKE RACKS: INSTALL BIKE RACK(S) NEAR MAIN ENTRANCE TO ACCOMMODATE ALTERNATIVE TRANSIT TO THE SITE. LOCATE BIKE RACK AS TO LIMIT PEDESTRIAN DISRUPTION AND MAINTAIN ACCESSIBLE PROVISIONS OF THE SITE
- 18. ACCESSIBLE PARKING SIGNAGE: PROVIDE SIGNAGE AND APPROPRIATE AMOUNT OF ADA PARKING AS REQUIRED BY JURISDICTION.
- 19. MOP/CURBSIDE/PULL FORWARD PARKING SIGN: PROVIDE APPROPRIATE PARKING SIGN, AS DIRECTED BY STARBUCKS.
- 20. PEDESTRIAN RAMP: ACCESSIBLE PEDESTRIAN CONCRETE RAMP WITH A TRANSITION TO ZERO CURB.
- 21. SITE AND DRIVE-THRU (DT) SIGNAGE
 - DRIVE THRU DIRECTIONAL SIGNAGE SHOULD BE CLEARLY VISIBLE TO PROVIDE AN EXPERIENCE THAT IS SAFE, CONVENIENT, EFFICIENT, AND EASY TO NAVIGATE. ENSURE LANDSCAPING DOES NOT HINDER SIGNAGE VISIBILITY.
- 22. MONUMENT AND PYLON SIGNS
 - ON SPECIFIC SITE CONDITIONS AND LANDLORD REQUIREMENTS. PLACEMENT SHOULD MAXIMIZE VISIBILITY AT MAJOR THOROUGH FARES. CONSIDER DIRECTION OF TRAFFIC, SITE LINES, OBSTRUCTIONS, AND ELEVATION OF SURROUNDING CONSTRUCTION.
- 23. DT DIRECTIONAL ARROW SIGN: LOCATE AT POINTS WITHIN THE SITE TO PROVIDE DIRECTIONAL WAYFINDING TOWARDS DT LANE. LOCATE SIGNAGE TO MAXIMIZE VISIBILITY FROM PARKING LOT ENTRY AND MAIN CIRCULATION PATHS. (DIMENSION LOCATION FROM CURB)
- 24. DT DIRECTIONAL EXIT/THANK YOU SIGN: LOCATE AT EXIT OF DT LANE, ON PASSENGER SIDE, WITH "EXIT ONLY" SIDE FACING PARKING LOT. (DIMENSION LOCATION FROM CURB)
- 25. CLEARANCE BAR: LOCATE AT ENTRANCE TO DT LANE. SET CLEARANCE HEIGHT BASED ON MINIMUM OBSTRUCTION HEIGHT ALONG PATH OF VEHICLE TRAVEL, INCLUDING BUILDING AWNINGS AND/OR ORDER POINT CANOPY. (DIMENSION 12" FROM CURB)
- 26. WAYFINDING PAVEMENT GRAPHICS: HIGH VISIBILITY DIRECTIONAL GRAPHICS, HEAT-APPLIED OR PAINTED ON PAVEMENT.
 - A. DOUBLE ARROWS: SPACE EVENLY WITHIN VEHICULAR CIRCULATION. DO NOT BLOCK PEDESTRIAN PATHS.
 - B. ENTRY/EXIT DT ARROWS: CENTER WITHIN TYPICAL DT LANE. ALIGN EDGE OF GRAPHIC WITH CURB AND ENTRY/EXIT.
- DIGITAL ORDER SCREEN (DOS) AND MENU**
- 27. DIGITAL ORDER SCREEN WITH CANOPY: LOCATE ORDER POINT CENTERED ON THE 7TH CAR IN THE QUEUE. SITUATE ORDER POINT SO THAT THE MICROPHONE AND SPEAKER FACE AWAY FROM TRAFFIC, AND CARS CAN PULL UP CLOSE, AVOIDING TIGHT TURNS.
 - A. ALTERNATE: SPEAKER POST IS AVAILABLE IF NEEDED DUE TO SPACE CONSTRAINTS, LANDLORD REQUIREMENTS, SITE RESTRICTIONS, OR BUDGET.
- 28. MENU BOARD: THE 5-PANEL MENU BOARD IS THE PREFERRED STANDARD. LOCATE ADJACENT TO THE DOS. DO NOT LOCATE ON TURNING RADIUS. DO NOT OBSTRUCT VIEW OF MENU BOARD WITH DOS/CANOPY. CONSIDER SCREENING BEHIND MENU BOARD IF ADJACENT TO EXTERIOR SEATING, SIDEWALK, OR PEDESTRIAN WAY.
 - A. ALTERNATE: 3-PANEL BOARD IS AVAILABLE IF SITE RESTRICTIONS LIMIT USE OF 5-PANEL.
- 29. DT PRE-MENU: THE PREVIEW BOARD IS AVAILABLE IN WALL-MOUNTED AND FREE-STANDING OPTIONS. LOCATE 1-2 CAR LENGTHS BEFORE ORDER POINT.
 - A. ALTERNATE: IF NO SPACE IS AVAILABLE IN THE DT LANE, THIS ITEM CAN BE REMOVED.
- 30. CURB TRANSITION: AREA OF TRANSITION FROM LANDSCAPE TO CONCRETE. ADD STRIPING AS APPLICABLE.

STANDARD SITE - CORNER - SINGLE LANE - HIGH VOLUME

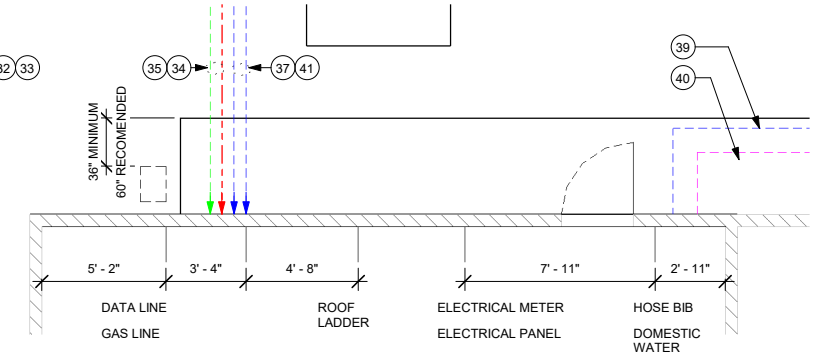
Scale: 1" = 20'-0"

LEGEND

- LANDSCAPE AREA
- NEW CONCRETE WALKWAY
- NEW 6" (150MM) CONCRETE CURB
- CONCRETE DRIVE THRU LANE
- ACCESSIBLE PATH OF TRAVEL
- ELECTRICAL
- DATA
- VOICE



MENU BOARD DETAIL



UTILITY ENTRY PLAN

DESIGN DEVELOPMENT ONLY - NOT INTENDED FOR CONSTRUCTION USE



STARBUCKS
2401 UTAH AVENUE SOUTH
SEATTLE, WASHINGTON 98134
(206) 318-1575

THESE DRAWINGS AND THE PROJECT MANUAL ARE CONFIDENTIAL AND SHALL REMAIN THE SOLE PROPERTY OF STARBUCKS CORPORATION, WHICH IS THE OWNER OF THE COPYRIGHT IN THIS WORK. THEY SHALL NOT BE REPRODUCED (IN WHOLE OR IN PART), SHARED WITH THIRD PARTIES OR USED IN ANY MANNER ON OTHER PROJECTS OR EXTENSIONS TO THIS PROJECT WITHOUT THE PRIOR WRITTEN CONSENT OF STARBUCKS CORPORATION. THESE DRAWINGS AND SPECIFICATIONS ARE INTENDED TO EXPRESS DESIGN INTENT FOR A PROTOTYPICAL STARBUCKS STORE (WHICH IS SUBJECT TO CHANGE AT ANYTIME) AND DO NOT REFLECT ACTUAL SITE CONDITIONS. NEITHER PARTY SHALL HAVE ANY OBLIGATION NOR LIABILITY TO THE OTHER (EXCEPT STATED ABOVE) UNTIL A WRITTEN AGREEMENT IS FULLY EXECUTED BY BOTH PARTIES.

STARBUCKS TEMPLATE VERSION: I2022.04.22

ARCHITECT OF RECORD
THIS DRAWING IS A DESIGN DEVELOPMENT DOCUMENT. SITE SPECIFIC MODIFICATIONS MADE UNDER THE RESPONSIBLE CHARGE OF THE ARCHITECT AND/OR ENGINEER-OF-RECORD WILL BE REQUIRED PRIOR TO USING THIS DOCUMENT FOR BIDDING, PERMITTING, OR CONSTRUCTION.

PROJECT NAME: **PROJECT NAME**
PROJECT ADDRESS: **PROJECT ADDRESS**

STORE #: **PROJECT #:**
ISSUE DATE: 07-13-2022
DESIGN MANAGER:
PRODUCTION DESIGNER:
CHECKED BY:

Revision Schedule			
Rev	Date	By	Description

SHEET TITLE:
STANDARD SITE - CORNER - SINGLE LANE - HIGH VOLUME
SHEET NUMBER:



STARBUCKS
2401 UTAH AVENUE SOUTH
SEATTLE, WASHINGTON 98134
(206) 318-1575

THESE DRAWINGS AND THE PROJECT MANUAL ARE CONFIDENTIAL AND SHALL REMAIN THE SOLE PROPERTY OF STARBUCKS CORPORATION, WHICH IS THE OWNER OF THE COPYRIGHT IN THIS WORK. THEY SHALL NOT BE REPRODUCED (IN WHOLE OR IN PART), SHARED WITH THIRD PARTIES OR USED IN ANY MANNER ON OTHER PROJECTS OR EXTENSIONS TO THIS PROJECT WITHOUT THE PRIOR WRITTEN CONSENT OF STARBUCKS CORPORATION. THESE DRAWINGS AND SPECIFICATIONS ARE INTENDED TO EXPRESS DESIGN INTENT FOR A PROTOTYPICAL STARBUCKS STORE (WHICH IS SUBJECT TO CHANGE AT ANYTIME) AND DO NOT REFLECT ACTUAL SITE CONDITIONS. NEITHER PARTY SHALL HAVE ANY OBLIGATION NOR LIABILITY TO THE OTHER (EXCEPT STATED ABOVE) UNTIL A WRITTEN AGREEMENT IS FULLY EXECUTED BY BOTH PARTIES.

STARBUCKS TEMPLATE VERSION: 12/22.04.22

ARCHITECT OF RECORD

THIS DRAWING IS A DESIGN DEVELOPMENT DOCUMENT. SITE SPECIFIC MODIFICATIONS MADE UNDER THE RESPONSIBLE CHARGE OF THE ARCHITECT AND/OR ENGINEER-OF-RECORD WILL BE REQUIRED PRIOR TO USING THIS DOCUMENT FOR BIDDING, PERMITTING, OR CONSTRUCTION.

PROJECT NAME:
<PROJECT NAME>

PROJECT ADDRESS:
<PROJECT ADDRESS>

STORE #: <XXXXX>
PROJECT #: <XXXXX-XXX>
ISSUE DATE: 07-13-2022
DESIGN MANAGER:
PRODUCTION DESIGNER: <DESIGNER>
CHECKED BY: <CHECKED BY>

Revision Schedule			
Rev	Date	By	Description

SHEET TITLE:
STANDARD SITE - MID BLOCK - SINGLE LANE
SCALE: AS SHOWN

SHEET NUMBER:
02

DESIGN DEVELOPMENT ONLY - NOT INTENDED FOR CONSTRUCTION USE

KEYED NOTES

- LANDSCAPE AREA (REFER TO STARBUCKS STANDARDS)
- ACCESSIBLE PATH OF TRAVEL
- 6" CONCRETE CURB, TYPICAL OR WHEEL STOPS REQUIRED AT BUILDING PAD.
- LOCATION FOR SITE TRANSFORMER
- SITE LIGHT POLE, MAINTAIN A MINIMUM OF
 - SITE ENTRY: 3 FC
 - DRIVE THRU ENTRY: 5 FC
 - BUILDING ENTRY: 10 FC
 - PATIO: 5 FC
 - PARKING AND SIDEWALKS: 1.5 FC
 - SERVICE DOOR: 3 FC
- PARKING BOLLARD
- PARKING AND DRIVE-THRU BOLLARDS** - NON-ILLUMINATED; PROVIDE NON-ILLUMINATED, PROTECTIVE BOLLARDS IN FRONT OF THE PRE-MENU BOARD, ORDER POINT, AND PICK-UP WINDOW BUMP OUT.
- DRIVE THRU LANE**: ENSURE EASY INGRESS AND EGRESS FROM MAIN CUSTOMER TRAFFIC. DO NOT BLOCK PARKING. MINIMUM (1) CAR LENGTH PRIOR TO ENTERING TRAFFIC AFTER PAY/PICKUP WINDOW. AVOID LOCATING UNSIGHTLY ITEMS, SUCH AS GREASE TRAPS OR TRASH ENCLOSURES, IN OR NEAR THE DRIVE THRU LANE.
- QUEUE LENGTH**: REVIEW SITE SPECIFIC QUEUING GUIDANCE TO DETERMINE TOTAL QUEUE LENGTH REQUIRED
 - CAR STACK**: PREFERRED (7) CARS MINIMUM FROM ORDER POINT TO PICK-UP WINDOW. ALLOWS PARTNERS TIME NEEDED TO PREPARE CUSTOMER ORDER AND MAINTAIN SPEED OF SERVICE.
 - ORDER TAIL**: REVIEW SITE SPECIFIC QUEUING GUIDANCE TO DETERMINE TAIL LENGTH REQUIRED. MINIMUM 3 CAR LENGTH FROM LEASE LINE TO DRIVE THRU ENTRY TO MINIMIZE TRAFFIC BACK-UP INTO STREET, DRIVEWAY, OR PARKING AREA
 - CAR SPACING**: ALLOW CARS TO BE SPACED 20' ON CENTER. VERIFY CENTERLINE OF THE DRIVE THRU WINDOW TO CENTERLINE OF THE ORDER POINT OR AT THE 7TH CAR IS 120' MINIMUM.
- TRASH ENCLOSURE LOCATION**: TRASH AND RECYCLING AREA TO BE LOCATED NO MORE THAN 300 FEET FROM THE SERVICE DOOR. ENCLOSURE SHALL NOT BE UNDER OBSTRUCTIONS WHICH LIMIT ACCESS.
- PATHWAY**: PATHWAY FROM THE SERVICE DOOR TO THE ENCLOSURE SHALL BE WELL LIT. ACCESS PATHWAY FROM REAR SERVICE DOOR TO TRASH ENCLOSURE SHALL BE RAMPED (MAX. 1:20) TO ALLOW ROLLING ACCESS.
- HAULER ACCESS**: TRASH ENCLOSURE POSITIONED SO THAT HAULER CAN ACCESS CONTAINERS BY FRONT LOAD REMOVAL. TYPICALLY LEAVE 40-45 FEET UNOBSTRUCTED AREA FOR 90-DEGREE TURN. CHECK REQUIREMENTS WITH LOCAL TRASH REMOVAL SERVICES.
- SITE PAVING**: PROVIDE 6" THICK SEALED CONCRETE PAVING AT TRASH ENCLOSURE. TO EXTEND 12'-0" FROM FRONT EDGE OF ENCLOSURE TOWARDS HAULER ACCESS POINT.
- HOSE BIB**: INCLUDE DRAIN AND HOSE BIB IF ENCLOSURE LOCATED MORE THAN 50 FEET FROM REAR SERVICE DOOR.
- PATIO, SEATING AND SITE AMENITIES**: PATIO AND SEATING: PROVIDE OUTDOOR SEATING AREA, WITH EASY ACCESS FROM TO CAFE SPACE. PROVIDE EXTERIOR RATED SEATING, TABLES, AND ACCESSORIES AS SPECIFIED IN THE STARBUCKS DESIGN CATALOG. PROVIDE ACCESSIBLE SEATING (MIN. 5%) OR PER LOCAL REQUIREMENTS.
- RAILING AND SCREENING**: PROVIDE RAILING, VEGETATED BUFFER, AND/OR SCREENING ELEMENT BETWEEN PATIO AND DRIVE THRU LANE. INCLUDE ADDITIONAL SCREENING AS NEEDED TO REDUCE NOISE AND LIGHT TRANSFER TO ADJACENT SITES.
- BIKE RACKS**: INSTALL BIKE RACK(S) NEAR MAIN ENTRANCE TO ACCOMMODATE ALTERNATIVE TRANSIT TO THE SITE. LOCATE BIKE RACK AS TO LIMIT PEDESTRIAN DISRUPTION AND MAINTAIN ACCESSIBLE PROVISIONS OF THE SITE
- ACCESSIBLE PARKING SIGNAGE**: PROVIDE SIGNAGE AND APPROPRIATE AMOUNT OF ADA PARKING AS REQUIRED BY JURISDICTION.
- MOP/CURBSIDE/PULL FORWARD PARKING SIGN**: PROVIDE APPROPRIATE PARKING SIGN, AS DIRECTED BY STARBUCKS.
- PEDESTRIAN RAMP**: ACCESSIBLE PEDESTRIAN CONCRETE RAMP WITH A TRANSITION TO ZERO CURB.
- SITE AND DRIVE-THRU (DT) SIGNAGE**: DRIVE THRU DIRECTIONAL SIGNAGE SHOULD BE CLEARLY VISIBLE TO PROVIDE AN EXPERIENCE THAT IS SAFE, CONVENIENT, EFFICIENT, AND EASY TO NAVIGATE. ENSURE LANDSCAPING DOES NOT HINDER SIGNAGE VISIBILITY.
- MONUMENT AND PYLON SIGNS**: ON SPECIFIC SITE CONDITIONS AND LANDLORD REQUIREMENTS. PLACEMENT SHOULD MAXIMIZE VISIBILITY AT MAJOR THOROUGHFARES. CONSIDER DIRECTION OF TRAFFIC, SITE LINES, OBSTRUCTIONS, AND ELEVATION OF SURROUNDING CONSTRUCTION.
- DT DIRECTIONAL ARROW SIGN**: LOCATE AT POINTS WITHIN THE SITE TO PROVIDE DIRECTIONAL WAYFINDING TOWARDS DT LANE. LOCATE SIGNAGE TO MAXIMIZE VISIBILITY FROM PARKING LOT ENTRY AND MAIN CIRCULATION PATHS. (DIMENSION LOCATION FROM CURB)
- DT DIRECTIONAL EXIT/THANK YOU SIGN**: LOCATE AT EXIT OF DT LANE, ON PASSENGER SIDE, WITH "EXIT ONLY" SIDE FACING PARKING LOT. (DIMENSION LOCATION FROM CURB)
- CLEARANCE BAR**: LOCATE AT ENTRANCE TO DT LANE. SET CLEARANCE HEIGHT BASED ON MINIMUM OBSTRUCTION HEIGHT ALONG PATH OF VEHICLE TRAVEL, INCLUDING BUILDING AWNINGS AND/OR ORDER POINT CANOPY. (DIMENSION 12" FROM CURB)
- WAYFINDING PAVEMENT GRAPHICS**: HIGH VISIBILITY DIRECTIONAL GRAPHICS, HEAT-APPLIED OR PAINTED ON PAVEMENT.
 - DOUBLE ARROWS**: SPACE EVENLY WITHIN VEHICULAR CIRCULATION. DO NOT BLOCK PEDESTRIAN PATHS.
 - ENTRY/EXIT DT ARROWS**: CENTER WITHIN TYPICAL DT LANE. ALIGN EDGE OF GRAPHIC WITH CURB AND ENTRY/EXIT.
- DIGITAL ORDER SCREEN (DOS) AND MENU**: DIGITAL ORDER SCREEN WITH CANOPY: LOCATE ORDER POINT CENTERED ON THE 7TH CAR IN THE QUEUE. SITUATE ORDER POINT SO THAT THE MICROPHONE AND SPEAKER FACE AWAY FROM TRAFFIC, AND CARS CAN PULL UP CLOSE, AVOIDING TIGHT TURNS.
 - ALTERNATE**: SPEAKER POST IS AVAILABLE IF NEEDED DUE TO SPACE CONSTRAINTS, LANDLORD REQUIREMENTS, SITE RESTRICTIONS, OR BUDGET.
- MENU BOARD**: THE 5-PANEL MENU BOARD IS THE PREFERRED STANDARD. LOCATE ADJACENT TO THE DOS. DO NOT LOCATE ON TURNING RADIUS. DO NOT OBSTRUCT VIEW OF MENU BOARD WITH DOS/CANOPY. CONSIDER SCREENING BEHIND MENU BOARD IF ADJACENT TO EXTERIOR SEATING, SIDEWALK, OR PEDESTRIAN WAY.
 - ALTERNATE**: 3-PANEL BOARD IS AVAILABLE IF SITE RESTRICTIONS LIMIT USE OF 5-PANEL.
- DT PRE-MENU**: THE PREVIEW BOARD IS AVAILABLE IN WALL-MOUNTED AND FREE-STANDING OPTIONS. LOCATE 1-2 CAR LENGTHS BEFORE ORDER POINT.
 - ALTERNATE**: IF NO SPACE IS AVAILABLE IN THE DT LANE, THIS ITEM CAN BE REMOVED.
- CURB TRANSITION**: AREA OF TRANSITION FROM LANDSCAPE TO CONCRETE. ADD STRIPING AS APPLICABLE.

GENERAL NOTES

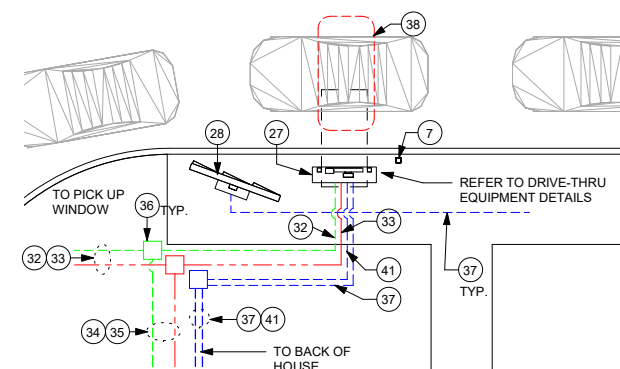
- BUILDING FOOTPRINT APPROXIMATELY 2200 SF, ON 0.85 ACRES, TYPICAL.
- PREFERRED SITE LOCATION ON MAIN PATH OF TRAFFIC WITH EASY INGRESS AND EGRESS. MORNING COMMUTE SIDE PREFERRED OF STREET.
- BUILDING SHOULD BE LOCATED ON SITE TO MAXIMIZE BUILDING PROMINENCE, MAXIMIZE DRIVE THRU QUEUE LENGTH, AND ALLOW EASY ENTRY/EXIT FROM SITE.
- BUILDING TO HAVE CLEAR LINE OF SIGHT FROM VEHICULAR AND PEDESTRIAN TRAFFIC. IT SHOULD BE LOCATED WITHIN 5 MILES OF A FREEWAY, WITH POSTED SPEED LIMIT OF MAIN STREET BELOW 55 MPH.
- SITE INCLUDES ADEQUATE PARKING TO MEET CUSTOMER AND EMPLOYEE NEEDS. INCLUDE 22 STALL MINIMUM DEDICATED PARKING (SUBJECT TO JURISDICTIONAL REQUIREMENTS).
- ALL UTILITIES ENTRIES TO BE LOCATED AT THE REAR OF BUILDING (AS SHOWN). PROVIDE PROTECTIVE BOLLARDS ON BOTH SIDES OF EXTERIOR UTILITY SERVICES ADJACENT TO VEHICULAR TRAFFIC, INCLUDING FIRE STAND PIPE, GAS, ELECTRICAL METERS, SITE TRANSFORMERS, AND TELECOMMUNICATIONS.
- DIMENSIONS ARE TO FACE OF CURB.
- DIMENSIONS SHOWN AS MINIMUM. STARBUCKS APPROVAL REQUIRED TO MODIFY.
- CONDUIT SHOWN OFFSET FOR CLARITY. LOCATIONS ARE FOR REFERENCE ONLY.

ELECTRICAL NOTES

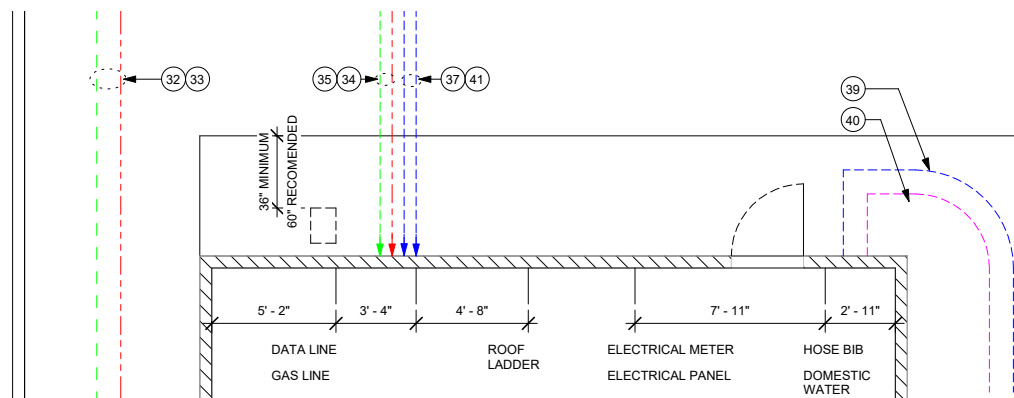
- DETECTOR LOOP TO BE CENTERED ON DT WINDOW. COORDINATE WITH GENERAL CONTRACTOR, TO BE 2" BELOW DT LANE PAVEMENT.
- AUDIO FOR DT SPEAKER. RUN DEDICATED 1" CONDUIT UNDERGROUND TO DT POS.
- VIDEO FOR DOS AND DETECTOR LOOP WIRING TO BE RUN THROUGH DEDICATED 1" CONDUIT UNDERGROUND TO DT POS
- SPARE 1" CONDUIT STUB UP IN BOH NEAR MANAGERS WORKS STATION - FOR FUTURE DATA/SPEAKER.
- SPARE 1" CONDUIT STUB UP IN BOH NEAR MANAGERS WORK STATION - FOR FUTURE AUDIO/VIDEO AT SPEAKER POST AND DETECTOR LOOP WIRING.
- LIQUID TIGHT UNDERGROUND ENCLOSURE WITH CLOSED BASE FOR PULLING WIRES (IF REQUIRED BY AHJ)
- DOS CANOPY LIGHT, PRE-MENU BOARD, MENU BOARD, DT ENTRY SIGNAGE, OVERHEAD CLEARANCE BAR, AND MERGE SIGNAGE TO BE RUN UNDERGROUND AND CONNECTED TO DEDICATED PANEL CIRCUIT VIA TIME CLOCK
- DETECTOR LOOP TO BE CENTERED ON ORDER SPEAKER. COORDINATE WITH GENERAL CONTRACTOR, TO BE 2" BELOW DT LANE PAVEMENT.
- CONDUIT(S) FOR POWER FOR TENANT'S SITE SIGNAGE, ILLUMINATED BOLLARDS AND IRRIGATION VAULT AS NEEDED.
- CONDUIT(S) FOR SITE LIGHTING AS NEEDED.
- POWER FOR DIGITAL ORDER SCREEN (DOS) ONLY. RUN ON DEDICATED CIRCUIT BACK TO MAIN DISTRIBUTION PANEL (MDP).

LEGEND

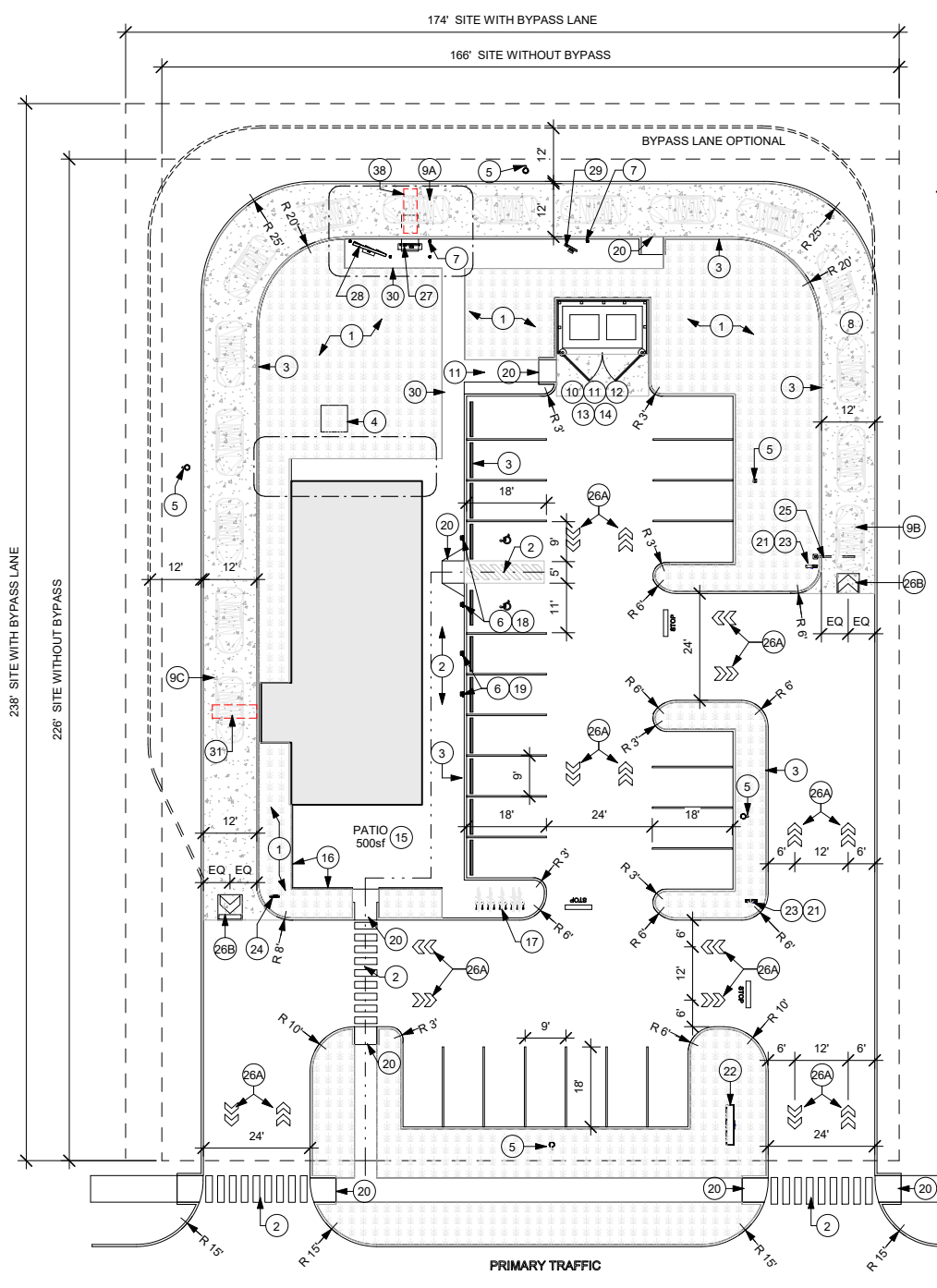
- LANDSCAPE AREA
- NEW CONCRETE WALKWAY
- NEW 6" (150MM) CONCRETE CURB
- CONCRETE DRIVE THRU LANE
- ACCESSIBLE PATH OF TRAVEL
- ELECTRICAL
- DATA
- VOICE



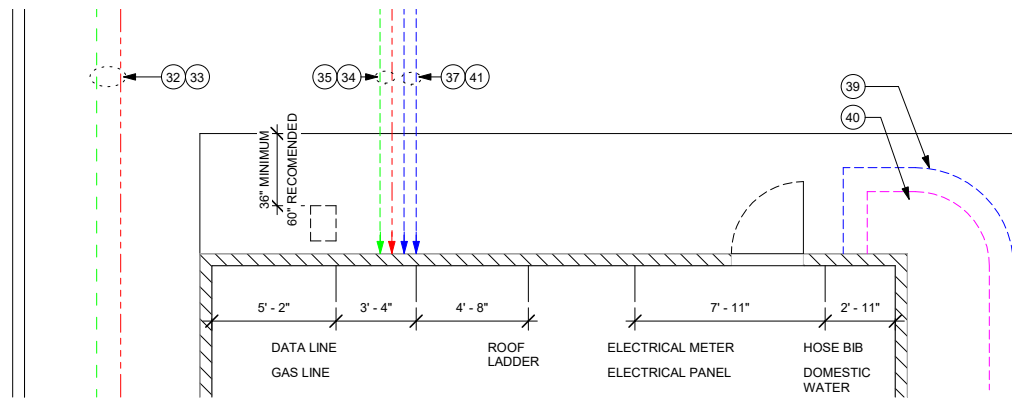
MENU BOARD DETAIL



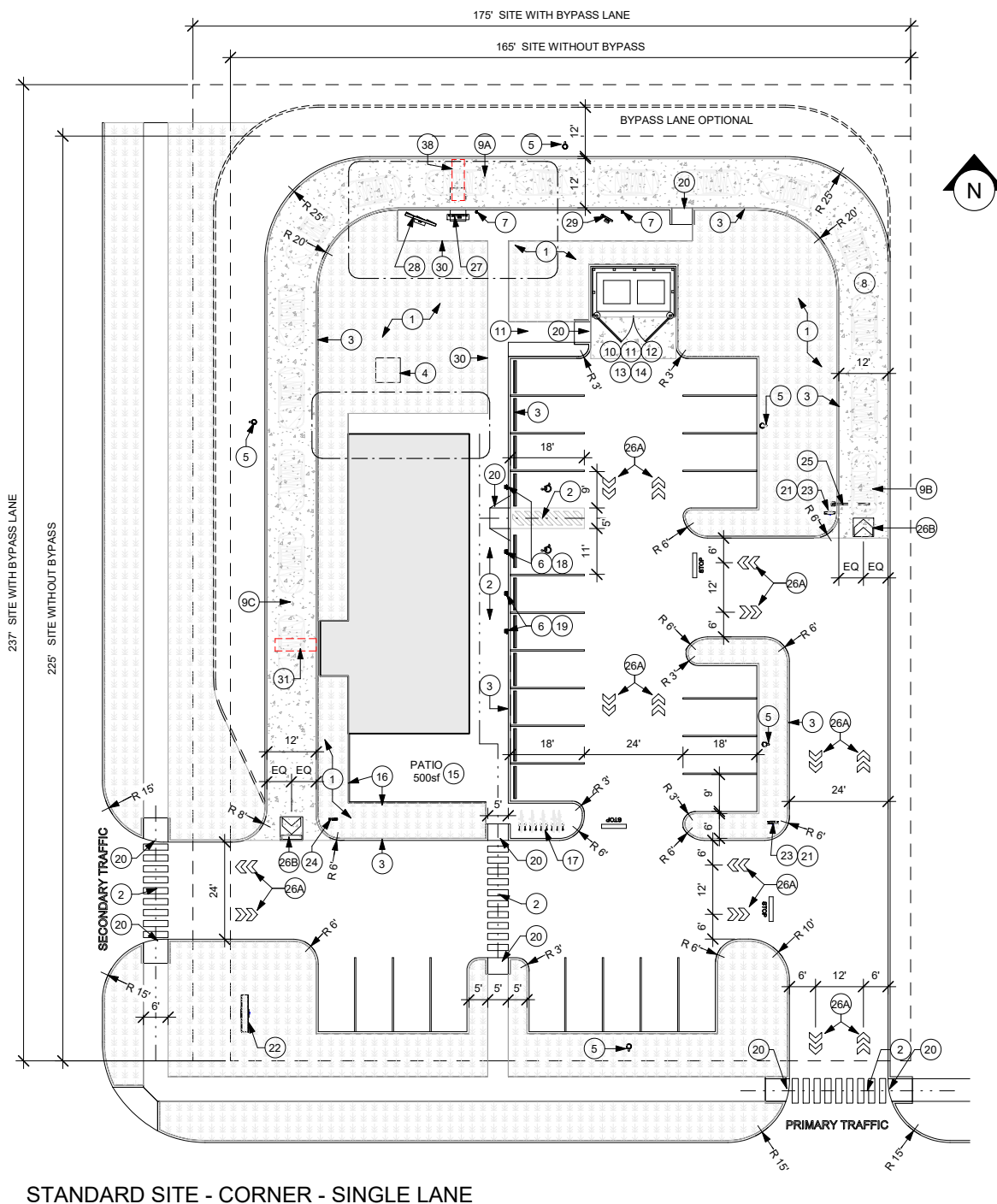
UTILITY ENTRY PLAN



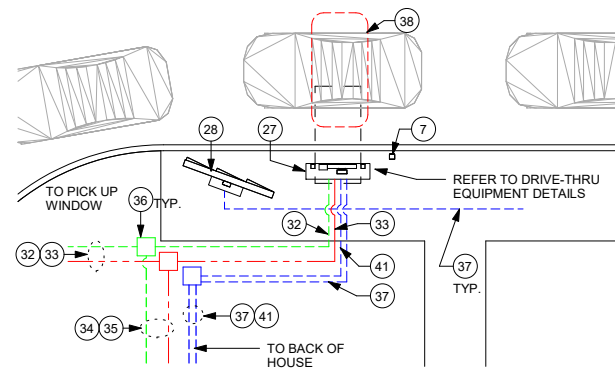
STANDARD SITE - MID BLOCK - SINGLE LANE



UTILITY ENTRY PLAN



STANDARD SITE - CORNER - SINGLE LANE



MENU BOARD DETAIL

GENERAL NOTES

- A. BUILDING FOOTPRINT APPROXIMATELY 2200 SF, ON 0.85 ACRES, TYPICAL.
- B. PREFERRED SITE LOCATION ON MAIN PATH OF TRAFFIC WITH EASY INGRESS AND EGRESS. MORNING COMMUTE SIDE PREFERRED OF STREET.
- C. BUILDING SHOULD BE LOCATED ON SITE TO MAXIMIZE BUILDING PROMINENCE, MAXIMIZE DRIVE THRU QUEUE LENGTH, AND ALLOW EASY ENTRY/EXIT FROM SITE.
- D. BUILDING TO HAVE CLEAR LINE OF SIGHT FROM VEHICULAR AND PEDESTRIAN TRAFFIC. IT SHOULD BE LOCATED WITHIN 5 MILES OF A FREEWAY, WITH POSTED SPEED LIMIT OF MAIN STREET BELOW 55 MPH.
- E. SITE INCLUDES ADEQUATE PARKING TO MEET CUSTOMER AND EMPLOYEE NEEDS. INCLUDE 22 STALL MINIMUM DEDICATED PARKING (SUBJECT TO JURISDICTIONAL REQUIREMENTS).
- F. ALL UTILITIES ENTRIES TO BE LOCATED AT THE REAR OF BUILDING (AS SHOWN). PROVIDE PROTECTIVE BOLLARDS ON BOTH SIDES OF EXTERIOR UTILITY SERVICES ADJACENT TO VEHICULAR TRAFFIC, INCLUDING FIRE STAND PIPE, GAS, ELECTRICAL METERS, SITE TRANSFORMERS, AND TELECOMMUNICATIONS.
- G. DIMENSIONS ARE TO FACE OF CURB.
- H. DIMENSIONS SHOWN AS MINIMUM. STARBUCKS APPROVAL REQUIRED TO MODIFY.
- I. CONDUIT SHOWN OFFSET FOR CLARITY. LOCATIONS ARE FOR REFERENCE ONLY.

ELECTRICAL NOTES

31. DETECTOR LOOP TO BE CENTERED ON DT WINDOW. COORDINATE WITH GENERAL CONTRACTOR, TO BE 2" BELOW DT LANE PAVEMENT.
32. AUDIO FOR DT SPEAKER. RUN DEDICATED 1" CONDUIT UNDERGROUND TO DT POS.
33. VIDEO FOR DOS AND DETECTOR LOOP WIRING TO BE RUN THROUGH DEDICATED 1" CONDUIT UNDERGROUND TO DT POS
34. SPARE 1" CONDUIT STUB UP IN BOH NEAR MANAGERS WORKS STATION - FOR FUTURE DATA/SPEAKER.
35. SPARE 1" CONDUIT STUB UP IN BOH NEAR MANAGERS WORK STATION - FOR FUTURE AUDIO/ VIDEO AT SPEAKER POST AND DETECTOR LOOP WIRING.
36. LIQUID TIGHT UNDERGROUND ENCLOSURE WITH CLOSED BASE FOR FOR PULLING WIRES (IF REQUIRED BY AHJ)
37. DOS CANOPY LIGHT, PRE-MENU BOARD, MENU BOARD, DT ENTRY SIGNAGE, OVERHEAD CLEARANCE BAR, AND MERGE SIGNAGE TO BE RUN UNDERGROUND AND CONNECTED TO DEDICATED PANEL CIRCUIT VIA TIME CLOCK
38. DETECTOR LOOP TO BE CENTERED ON ORDER SPEAKER. COORDINATE WITH GENERAL CONTRACTOR, TO BE 2" BELOW DT LANE PAVEMENT.
39. CONDUIT(S) FOR POWER FOR TENANT'S SITE SIGNAGE, ILLUMINATED BOLLARDS AND IRRIGATION VAULT AS NEEDED.
40. CONDUIT(S) FOR SITE LIGHTING AS NEEDED.
41. POWER FOR DIGITAL ORDER SCREEN (DOS) ONLY. RUN ON DEDICATED CIRCUIT BACK TO MAIN DISTRIBUTION PANEL (MDP).

LEGEND

- LANDSCAPE AREA
- NEW CONCRETE WALKWAY
- NEW 6" (150MM) CONCRETE CURB
- CONCRETE DRIVE THRU LANE
- ACCESSIBLE PATH OF TRAVEL
- ELECTRICAL
- DATA
- VOICE

KEYED NOTES

1. LANDSCAPE AREA (REFER TO STARBUCKS STANDARDS)
2. ACCESSIBLE PATH OF TRAVEL
3. 6" CONCRETE CURB, TYPICAL OR WHEEL STOPS REQUIRED AT BUILDING PAD.
4. LOCATION FOR SITE TRANSFORMER
5. SITE LIGHT POLE, MAINTAIN A MINIMUM OF
 - SITE ENTRY: 3 FC
 - DRIVE THRU ENTRY: 5 FC
 - BUILDING ENTRY: 10 FC
 - PATIO: 5 FC
 - PARKING AND SIDEWALKS: 1.5 FC
 - SERVICE DOOR: 3 FC
6. PARKING BOLLARD
7. **PARKING AND DRIVE-THRU BOLLARDS** - NON-ILLUMINATED; PROVIDE NON-ILLUMINATED, PROTECTIVE BOLLARDS IN FRONT OF THE PRE-MENU BOARD, ORDER POINT, AND PICK-UP WINDOW BUMP OUT.
8. **DRIVE THRU LANE:** ENSURE EASY INGRESS AND EGRESS FROM MAIN CUSTOMER TRAFFIC. DO NOT BLOCK PARKING. MINIMUM (1) CAR LENGTH PRIOR TO ENTERING TRAFFIC AFTER PAY/PICKUP WINDOW. AVOID LOCATING UNSIGHTLY ITEMS, SUCH AS GREASE TRAPS OR TRASH ENCLOSURES, IN OR NEAR THE DRIVE THRU LANE.
9. **QUEUE LENGTH:** REVIEW SITE SPECIFIC QUEUING GUIDANCE TO DETERMINE TOTAL QUEUE LENGTH REQUIRED
 - A. **CAR STACK:** PREFERRED (7) CARS MINIMUM FROM ORDER POINT TO PICK-UP WINDOW. ALLOWS PARTNERS TIME NEEDED TO PREPARE CUSTOMER ORDER AND MAINTAIN SPEED OF SERVICE.
 - B. **ORDER TAIL:** REVIEW SITE SPECIFIC QUEUING GUIDANCE TO DETERMINE TAIL LENGTH REQUIRED. MINIMUM 3 CAR LENGTH FROM LEASE LINE TO DRIVE THRU ENTRY TO MINIMIZE TRAFFIC BACK-UP INTO STREET, DRIVEWAY, OR PARKING AREA
 - C. **CAR SPACING:** ALLOW CARS TO BE SPACED 20' ON CENTER. VERIFY CENTERLINE OF THE DRIVE THRU WINDOW TO CENTERLINE OF THE ORDER POINT OR AT THE 7TH CAR IS 120' MINIMUM.
10. **TRASH ENCLOSURE LOCATION:** TRASH AND RECYCLING AREA TO BE LOCATED NO MORE THAN 300 FEET FROM THE SERVICE DOOR. ENCLOSURE SHALL NOT BE UNDER OBSTRUCTIONS WHICH LIMIT ACCESS.
11. **PATHWAY:** PATHWAY FROM THE SERVICE DOOR TO THE ENCLOSURE SHALL BE WELL LIT. ACCESS PATHWAY FROM REAR SERVICE DOOR TO TRASH ENCLOSURE SHALL BE RAMPED (MAX. 1:20) TO ALLOW ROLLING ACCESS.
12. **HAULER ACCESS:** TRASH ENCLOSURE POSITIONED SO THAT HAULER CAN ACCESS CONTAINERS BY FRONT LOAD REMOVAL. TYPICALLY LEAVE 40-45 FEET UNOBSTRUCTED AREA FOR 90-DEGREE TURN. CHECK REQUIREMENTS WITH LOCAL TRASH REMOVAL SERVICES.
13. **SITE PAVING:** PROVIDE 6" THICK SEALED CONCRETE PAVING AT TRASH ENCLOSURE. TO EXCEED 12'-0" FROM FRONT EDGE OF ENCLOSURE TOWARDS HAULER ACCESS POINT.
14. **HOSE BIB:** INCLUDE DRAIN AND HOSE BIB IF ENCLOSURE LOCATED MORE THAN 50 FEET FROM REAR SERVICE DOOR.
15. **PATIO, SEATING AND SITE AMENITIES**
PATIO AND SEATING: PROVIDE OUTDOOR SEATING AREA, WITH EASY ACCESS FROM TO CAFE SPACE. PROVIDE EXTERIOR RATED SEATING, TABLES, AND ACCESSORIES AS SPECIFIED IN THE STARBUCKS DESIGN CATALOG. PROVIDE ACCESSIBLE SEATING (MIN. 5%) OR PER LOCAL REQUIREMENTS.
16. **RAILING AND SCREENING :** PROVIDE RAILING, VEGETATED BUFFER, AND/OR SCREENING ELEMENT BETWEEN PATIO AND DRIVE THRU LANE. INCLUDE ADDITIONAL SCREENING AS NEEDED TO REDUCE NOISE AND LIGHT TRANSFER TO ADJACENT SITES.
17. **BIKE RACKS:** INSTALL BIKE RACK(S) NEAR MAIN ENTRANCE TO ACCOMMODATE ALTERNATIVE TRANSIT TO THE SITE. LOCATE BIKE RACK AS TO LIMIT PEDESTRIAN DISRUPTION AND MAINTAIN ACCESSIBLE PROVISIONS OF THE SITE
18. **ACCESSIBLE PARKING SIGNAGE:** PROVIDE SIGNAGE AND APPROPRIATE AMOUNT OF ADA PARKING AS REQUIRED BY JURISDICTION.
19. **MOP/CURBSIDE/PULL FORWARD PARKING SIGN:** PROVIDE APPROPRIATE PARKING SIGN, AS DIRECTED BY STARBUCKS.
20. **PEDESTRIAN RAMP:** ACCESSIBLE PEDESTRIAN CONCRETE RAMP WITH A TRANSITION TO ZERO CURB.
21. **SITE AND DRIVE-THRU (DT) SIGNAGE**
DRIVE THRU DIRECTIONAL SIGNAGE SHOULD BE CLEARLY VISIBLE TO PROVIDE AN EXPERIENCE THAT IS SAFE, CONVENIENT, EFFICIENT, AND EASY TO NAVIGATE. ENSURE LANDSCAPING DOES NOT HINDER SIGNAGE VISIBILITY.
22. **MONUMENT AND PYLON SIGNS**
 ON SPECIFIC SITE CONDITIONS AND LANDLORD REQUIREMENTS. PLACEMENT SHOULD MAXIMIZE VISIBILITY AT MAJOR THROUGH FARES. CONSIDER DIRECTION OF TRAFFIC, SITE LINES, OBSTRUCTIONS, AND ELEVATION OF SURROUNDING CONSTRUCTION.
23. **DT DIRECTIONAL ARROW SIGN:** LOCATE AT POINTS WITHIN THE SITE TO PROVIDE DIRECTIONAL WAYFINDING TOWARDS DT LANE. LOCATE SIGNAGE TO MAXIMIZE VISIBILITY FROM PARKING LOT ENTRY AND MAIN CIRCULATION PATHS. (DIMENSION LOCATION FROM CURB)
24. **DT DIRECTIONAL EXIT/THANK YOU SIGN:** LOCATE AT EXIT OF DT LANE, ON PASSENGER SIDE, WITH "EXIT ONLY" SIDE FACING PARKING LOT. (DIMENSION LOCATION FROM CURB)
25. **CLEARANCE BAR:** LOCATE AT ENTRANCE TO DT LANE. SET CLEARANCE HEIGHT BASED ON MINIMUM OBSTRUCTION HEIGHT ALONG PATH OF VEHICLE TRAVEL, INCLUDING BUILDING AWNINGS AND/OR ORDER POINT CANOPY. (DIMENSION 12' FROM CURB)
26. **WAYFINDING PAVEMENT GRAPHICS :** HIGH VISIBILITY DIRECTIONAL GRAPHICS, HEAT-APPLIED OR PAINTED ON PAVEMENT.
 - A. **DOUBLE ARROWS :** SPACE EVENLY WITHIN VEHICULAR CIRCULATION. DO NOT BLOCK PEDESTRIAN PATHS.
 - B. **ENTRY/EXIT DT ARROWS:** CENTER WITHIN TYPICAL DT LANE. ALIGN EDGE OF GRAPHIC WITH CURB AND ENTRY/EXIT.
27. **DIGITAL ORDER SCREEN (DOS) AND MENU**
DIGITAL ORDER SCREEN WITH CANOPY : LOCATE ORDER POINT CENTERED ON THE 7TH CAR IN THE QUEUE. SITUATE ORDER POINT SO THAT THE MICROPHONE AND SPEAKER FACE AWAY FROM TRAFFIC, AND CARS CAN PULL UP CLOSE, AVOIDING TIGHT TURNS.
 - A. **ALTERNATE, SPEAKER POST IS AVAILABLE IF NEEDED DUE TO SPACE CONSTRAINTS, LANDLORD REQUIREMENTS, SITE RESTRICTIONS, OR BUDGET.**
28. **MENU BOARD:** THE 5-PANEL MENU BOARD IS THE PREFERRED STANDARD. LOCATE ADJACENT TO THE DOS. DO NOT LOCATE ON TURNING RADIUS. DO NOT OBSTRUCT VIEW OF MENU BOARD WITH DOS/CANOPY. CONSIDER SCREENING BEHIND MENU BOARD IF ADJACENT TO EXTERIOR SEATING, SIDEWALK, OR PEDESTRIAN WAY.
 - A. **ALTERNATE:** 3-PANEL BOARD IS AVAILABLE IF SITE RESTRICTIONS LIMIT USE OF 5-PANEL.
29. **DT PRE-MENU:** THE PREVIEW BOARD IS AVAILABLE IN WALL-MOUNTED AND FREE-STANDING OPTIONS. LOCATE 1-2 CAR LENGTHS BEFORE ORDER POINT.
 - A. **ALTERNATE:** IF NO SPACE IS AVAILABLE IN THE DT LANE, THIS ITEM CAN BE REMOVED.
30. **CURB TRANSITION:** AREA OF TRANSITION FROM LANDSCAPE TO CONCRETE. ADD STRIPING AS APPLICABLE.

DESIGN DEVELOPMENT ONLY - NOT INTENDED FOR CONSTRUCTION USE



STARBUCKS
 2401 UTAH AVENUE SOUTH
 SEATTLE, WASHINGTON 98134
 (206) 318-1575

THESE DRAWINGS AND THE PROJECT MANUAL ARE CONFIDENTIAL AND SHALL REMAIN THE SOLE PROPERTY OF STARBUCKS CORPORATION, WHICH IS THE OWNER OF THE COPYRIGHT IN THIS WORK. THEY SHALL NOT BE REPRODUCED (IN WHOLE OR IN PART), SHARED WITH THIRD PARTIES OR USED IN ANY MANNER ON OTHER PROJECTS OR EXTENSIONS TO THIS PROJECT WITHOUT THE PRIOR WRITTEN CONSENT OF STARBUCKS CORPORATION. THESE DRAWINGS AND SPECIFICATIONS ARE INTENDED TO EXPRESS DESIGN INTENT FOR A PROTOTYPICAL STARBUCKS STORE (WHICH IS SUBJECT TO CHANGE AT ANYTIME) AND DO NOT REFLECT ACTUAL SITE CONDITIONS. NEITHER PARTY SHALL HAVE ANY OBLIGATION NOR LIABILITY TO THE OTHER (EXCEPT STATED ABOVE) UNTIL A WRITTEN AGREEMENT IS FULLY EXECUTED BY BOTH PARTIES.

STARBUCKS TEMPLATE VERSION: I2022.04.22

ARCHITECT OF RECORD

THIS DRAWING IS A DESIGN DEVELOPMENT DOCUMENT. SITE SPECIFIC MODIFICATIONS MADE UNDER THE RESPONSIBLE CHARGE OF THE ARCHITECT AND/OR ENGINEER-OF-RECORD WILL BE REQUIRED PRIOR TO USING THIS DOCUMENT FOR BIDDING, PERMITTING, OR CONSTRUCTION.

PROJECT NAME:
<PROJECT NAME>

PROJECT ADDRESS:
<PROJECT ADDRESS>

STORE #:	<XXXX>
PROJECT #:	<XXXX-XXX>
ISSUE DATE:	07-13-2022
DESIGN MANAGER:	
PRODUCTION DESIGNER:	<DESIGNER>
CHECKED BY:	<CHECKED BY>

Revision Schedule			
Rev	Date	By	Description

SHEET TITLE:
STANDARD SITE - CORNER - SINGLE LANE
 SCALE: AS SHOWN

SHEET NUMBER:
 01



STARBUCKS
2401 UTAH AVENUE SOUTH
SEATTLE, WASHINGTON 98134
(206) 318-1575

THESE DRAWINGS AND THE PROJECT MANUAL ARE CONFIDENTIAL AND SHALL REMAIN THE SOLE PROPERTY OF STARBUCKS CORPORATION, WHICH IS THE OWNER OF THE COPYRIGHT IN THIS WORK. THEY SHALL NOT BE REPRODUCED (IN WHOLE OR IN PART), SHARED WITH THIRD PARTIES OR USED IN ANY MANNER ON OTHER PROJECTS OR EXTENSIONS TO THIS PROJECT WITHOUT THE PRIOR WRITTEN CONSENT OF STARBUCKS CORPORATION. THESE DRAWINGS AND SPECIFICATIONS ARE INTENDED TO EXPRESS DESIGN INTENT FOR A PROTOTYPICAL STARBUCKS STORE (WHICH IS SUBJECT TO CHANGE AT ANYTIME) AND DO NOT REFLECT ACTUAL SITE CONDITIONS. NEITHER PARTY SHALL HAVE ANY OBLIGATION NOR LIABILITY TO THE OTHER (EXCEPT STATED ABOVE) UNTIL A WRITTEN AGREEMENT IS FULLY EXECUTED BY BOTH PARTIES.

STARBUCKS TEMPLATE VERSION: I2022.04.22

ARCHITECT OF RECORD

THIS DRAWING IS A DESIGN DEVELOPMENT DOCUMENT. SITE SPECIFIC MODIFICATIONS MADE UNDER THE RESPONSIBLE CHARGE OF THE ARCHITECT AND/OR ENGINEER-OF-RECORD WILL BE REQUIRED PRIOR TO USING THIS DOCUMENT FOR BIDDING, PERMITTING, OR CONSTRUCTION.

PROJECT NAME:
<PROJECT NAME>

PROJECT ADDRESS:
<PROJECT ADDRESS>

STORE #: <XXXXX>
PROJECT #: <XXXXX-XXX>
ISSUE DATE: 07-13-2022
DESIGN MANAGER:
PRODUCTION DESIGNER: <DESIGNER>
CHECKED BY: <CHECKED BY>

Revision Schedule			
Rev	Date	By	Description

SHEET TITLE:
HIGH VOLUME SITE - MID BLOCK - SINGLE LANE
SCALE: AS SHOWN

SHEET NUMBER:

DESIGN DEVELOPMENT ONLY - NOT INTENDED FOR CONSTRUCTION USE

KEYED NOTES

- LANDSCAPE AREA (REFER TO STARBUCKS STANDARDS)
- ACCESSIBLE PATH OF TRAVEL
- 6" CONCRETE CURB, TYPICAL OR WHEEL STOPS REQUIRED AT BUILDING PAD.
- LOCATION FOR SITE TRANSFORMER
- SITE LIGHT POLE, MAINTAIN A MINIMUM OF
 - SITE ENTRY: 3 FC
 - DRIVE THRU ENTRY: 5 FC
 - BUILDING ENTRY: 10 FC
 - PATIO: 5 FC
 - PARKING AND SIDEWALKS: 1.5 FC
 - SERVICE DOOR: 3 FC
- PARKING BOLLARD
- PARKING AND DRIVE-THRU**
BOLLARDS - NON-ILLUMINATED; PROVIDE NON-ILLUMINATED, PROTECTIVE BOLLARDS IN FRONT OF THE PRE-MENU BOARD, ORDER POINT, AND PICK-UP WINDOW BUMP OUT.
- DRIVE THRU LANE: ENSURE EASY INGRESS AND EGRESS FROM MAIN CUSTOMER TRAFFIC. DO NOT BLOCK PARKING. MINIMUM (1) CAR LENGTH PRIOR TO ENTERING TRAFFIC AFTER PAY/PICKUP WINDOW. AVOID LOCATING UNSIGHTLY ITEMS, SUCH AS GREASE TRAPS OR TRASH ENCLOSURES, IN OR NEAR THE DRIVE THRU LANE.
- QUEUE LENGTH: REVIEW SITE SPECIFIC QUEUING GUIDANCE TO DETERMINE TOTAL QUEUE LENGTH REQUIRED.
 - CAR STACK: PREFERRED (7) CARS MINIMUM FROM ORDER POINT TO PICK-UP WINDOW. ALLOWS PARTNERS TIME NEEDED TO PREPARE CUSTOMER ORDER AND MAINTAIN SPEED OF SERVICE.
 - ORDER TAIL: REVIEW SITE SPECIFIC QUEUING GUIDANCE TO DETERMINE TAIL LENGTH REQUIRED. MINIMUM 3 CAR LENGTH FROM LEASE LINE TO DRIVE THRU ENTRY TO MINIMIZE TRAFFIC BACK-UP INTO STREET, DRIVEWAY, OR PARKING AREA
 - CAR SPACING: ALLOW CARS TO BE SPACED 20' ON CENTER. VERIFY CENTERLINE OF THE DRIVE THRU WINDOW TO CENTERLINE OF THE ORDER POINT OR AT THE 7TH CAR IS 120' MINIMUM.
- TRASH ENCLOSURE**
LOCATION: TRASH AND RECYCLING AREA TO BE LOCATED NO MORE THAN 300 FEET FROM THE SERVICE DOOR. ENCLOSURE SHALL NOT BE UNDER OBSTRUCTIONS WHICH LIMIT ACCESS.
- PATHWAY: PATHWAY FROM THE SERVICE DOOR TO THE ENCLOSURE SHALL BE WELL LIT. ACCESS PATHWAY FROM REAR SERVICE DOOR TO TRASH ENCLOSURE SHALL BE RAMPED (MAX. 1:20) TO ALLOW ROLLING ACCESS.
- HAULER ACCESS: TRASH ENCLOSURE POSITIONED SO THAT HAULER CAN ACCESS CONTAINERS BY FRONT LOAD REMOVAL. TYPICALLY LEAVE 40-45 FEET UNOBSTRUCTED AREA FOR 90-DEGREE TURN. CHECK REQUIREMENTS WITH LOCAL TRASH REMOVAL SERVICES.
- SITE PAVING: PROVIDE 6" THICK SEALED CONCRETE PAVING AT TRASH ENCLOSURE. TO EXTEND 12'-0" FROM FRONT EDGE OF ENCLOSURE TOWARDS HAULER ACCESS POINT.
- HOSE BIB: INCLUDE DRAIN AND HOSE BIB IF ENCLOSURE LOCATED MORE THAN 50 FEET FROM REAR SERVICE DOOR.
- PATIO, SEATING AND SITE AMENITIES**
PATIO AND SEATING: PROVIDE OUTDOOR SEATING AREA, WITH EASY ACCESS FROM TO CAFE SPACE. PROVIDE EXTERIOR RATED SEATING, TABLES, AND ACCESSORIES AS SPECIFIED IN THE STARBUCKS DESIGN CATALOG. PROVIDE ACCESSIBLE SEATING (MIN. 5%) OR PER LOCAL REQUIREMENTS.
- RAILING AND SCREENING**: PROVIDE RAILING, VEGETATED BUFFER, AND/OR SCREENING ELEMENT BETWEEN PATIO AND DRIVE THRU LANE. INCLUDE ADDITIONAL SCREENING AS NEEDED TO REDUCE NOISE AND LIGHT TRANSFER TO ADJACENT SITES.
- BIKE RACKS**: INSTALL BIKE RACK(S) NEAR MAIN ENTRANCE TO ACCOMMODATE ALTERNATIVE TRANSIT TO THE SITE. LOCATE BIKE RACK AS TO LIMIT PEDESTRIAN DISRUPTION AND MAINTAIN ACCESSIBLE PROVISIONS OF THE SITE
- ACCESSIBLE PARKING SIGNAGE**: PROVIDE SIGNAGE AND APPROPRIATE AMOUNT OF ADA PARKING AS REQUIRED BY JURISDICTION.
- MOP/CURBSIDE/PULL FORWARD PARKING SIGN**: PROVIDE APPROPRIATE PARKING SIGN, AS DIRECTED BY STARBUCKS.
- PEDESTRIAN RAMP**: ACCESSIBLE PEDESTRIAN CONCRETE RAMP WITH A TRANSITION TO ZERO CURB.
- SITE AND DRIVE-THRU (DT) SIGNAGE**
DRIVE THRU DIRECTIONAL SIGNAGE SHOULD BE CLEARLY VISIBLE TO PROVIDE AN EXPERIENCE THAT IS SAFE, CONVENIENT, EFFICIENT, AND EASY TO NAVIGATE. ENSURE LANDSCAPING DOES NOT HINDER SIGNAGE VISIBILITY.
- MONUMENT AND PYLON SIGNS**
ON SPECIFIC SITE CONDITIONS AND LANDLORD REQUIREMENTS. PLACEMENT SHOULD MAXIMIZE VISIBILITY AT MAJOR THOROUGHFARES. CONSIDER DIRECTION OF TRAFFIC, SITE LINES, OBSTRUCTIONS, AND ELEVATION OF SURROUNDING CONSTRUCTION.
- DT DIRECTIONAL ARROW SIGN: LOCATE AT POINTS WITHIN THE SITE TO PROVIDE DIRECTIONAL WAYFINDING TOWARDS DT LANE. LOCATE SIGNAGE TO MAXIMIZE VISIBILITY FROM PARKING LOT ENTRY AND MAIN CIRCULATION PATHS. (DIMENSION LOCATION FROM CURB)
- DT DIRECTIONAL EXIT/THANK YOU SIGN: LOCATE AT EXIT OF DT LANE, ON PASSENGER SIDE, WITH "EXIT ONLY" SIDE FACING PARKING LOT. (DIMENSION LOCATION FROM CURB)
- CLEARANCE BAR**: LOCATE AT ENTRANCE TO DT LANE. SET CLEARANCE HEIGHT BASED ON MINIMUM OBSTRUCTION HEIGHT ALONG PATH OF VEHICLE TRAVEL, INCLUDING BUILDING AWNINGS AND/OR ORDER POINT CANOPY. (DIMENSION 12" FROM CURB)
- WAYFINDING PAVEMENT GRAPHICS: HIGH VISIBILITY DIRECTIONAL GRAPHICS, HEAT-APPLIED OR PAINTED ON PAVEMENT.
 - DOUBLE ARROWS: SPACE EVENLY WITHIN VEHICULAR CIRCULATION. DO NOT BLOCK PEDESTRIAN PATHS.
 - ENTRY/EXIT DT ARROWS: CENTER WITHIN TYPICAL DT LANE. ALIGN EDGE OF GRAPHIC WITH CURB AND ENTRY/EXIT.
- DIGITAL ORDER SCREEN (DOS) AND MENU**
DIGITAL ORDER SCREEN WITH CANOPY: LOCATE ORDER POINT CENTERED ON THE 7TH CAR IN THE QUEUE. SITUATE ORDER POINT SO THAT THE MICROPHONE AND SPEAKER FACE AWAY FROM TRAFFIC, AND CARS CAN PULL UP CLOSE, AVOIDING TIGHT TURNS.
 - ALTERNATE: SPEAKER POST IS AVAILABLE IF NEEDED DUE TO SPACE CONSTRAINTS, LANDLORD REQUIREMENTS, SITE RESTRICTIONS, OR BUDGET.
- MENU BOARD**: THE 5-PANEL MENU BOARD IS THE PREFERRED STANDARD. LOCATE ADJACENT TO THE DOS. DO NOT LOCATE ON TURNING RADIUS. DO NOT OBSTRUCT VIEW OF MENU BOARD WITH DOS/CANOPY. CONSIDER SCREENING BEHIND MENU BOARD IF ADJACENT TO EXTERIOR SEATING, SIDEWALK, OR PEDESTRIAN WAY.
 - ALTERNATE: 3-PANEL BOARD IS AVAILABLE IF SITE RESTRICTIONS LIMIT USE OF 5-PANEL.
- DT PRE-MENU: THE PREVIEW BOARD IS AVAILABLE IN WALL-MOUNTED AND FREE-STANDING OPTIONS. LOCATE 1-2 CAR LENGTHS BEFORE ORDER POINT.
 - ALTERNATE: IF NO SPACE IS AVAILABLE IN THE DT LANE, THIS ITEM CAN BE REMOVED.
- CURB TRANSITION**: AREA OF TRANSITION FROM LANDSCAPE TO CONCRETE. ADD STRIPING AS APPLICABLE.

GENERAL NOTES

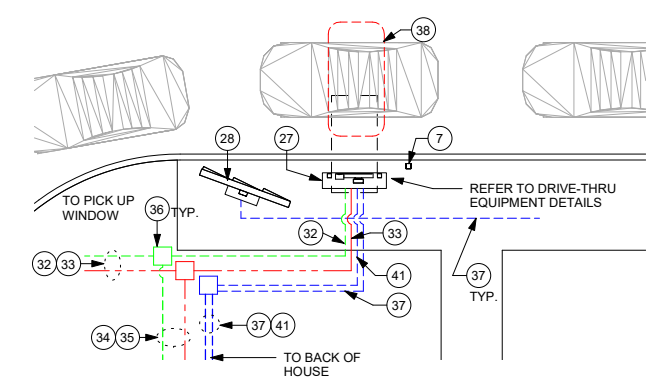
- BUILDING FOOTPRINT APPROXIMATELY 2200 SF, ON 0.85 ACRES, TYPICAL.
- PREFERRED SITE LOCATION ON MAIN PATH OF TRAFFIC WITH EASY INGRESS AND EGRESS. MORNING COMMUTE SIDE PREFERRED OF STREET.
- BUILDING SHOULD BE LOCATED ON SITE TO MAXIMIZE BUILDING PROMINENCE, MAXIMIZE DRIVE THRU QUEUE LENGTH, AND ALLOW EASY ENTRY/EXIT FROM SITE.
- BUILDING TO HAVE CLEAR LINE OF SIGHT FROM VEHICULAR AND PEDESTRIAN TRAFFIC. IT SHOULD BE LOCATED WITHIN 5 MILES OF A FREEWAY, WITH POSTED SPEED LIMIT OF MAIN STREET BELOW 55 MPH.
- SITE INCLUDES ADEQUATE PARKING TO MEET CUSTOMER AND EMPLOYEE NEEDS. INCLUDE 22 STALL MINIMUM DEDICATED PARKING (SUBJECT TO JURISDICTIONAL REQUIREMENTS).
- ALL UTILITIES ENTRIES TO BE LOCATED AT THE REAR OF BUILDING (AS SHOWN). PROVIDE PROTECTIVE BOLLARDS ON BOTH SIDES OF EXTERIOR UTILITY SERVICES ADJACENT TO VEHICULAR TRAFFIC, INCLUDING FIRE STAND PIPE, GAS, ELECTRICAL METERS, SITE TRANSFORMERS, AND TELECOMMUNICATIONS.
- DIMENSIONS ARE TO FACE OF CURB.
- DIMENSIONS SHOWN AS MINIMUM. STARBUCKS APPROVAL REQUIRED TO MODIFY.
- CONDUIT SHOWN OFFSET FOR CLARITY. LOCATIONS ARE FOR REFERENCE ONLY.

ELECTRICAL NOTES

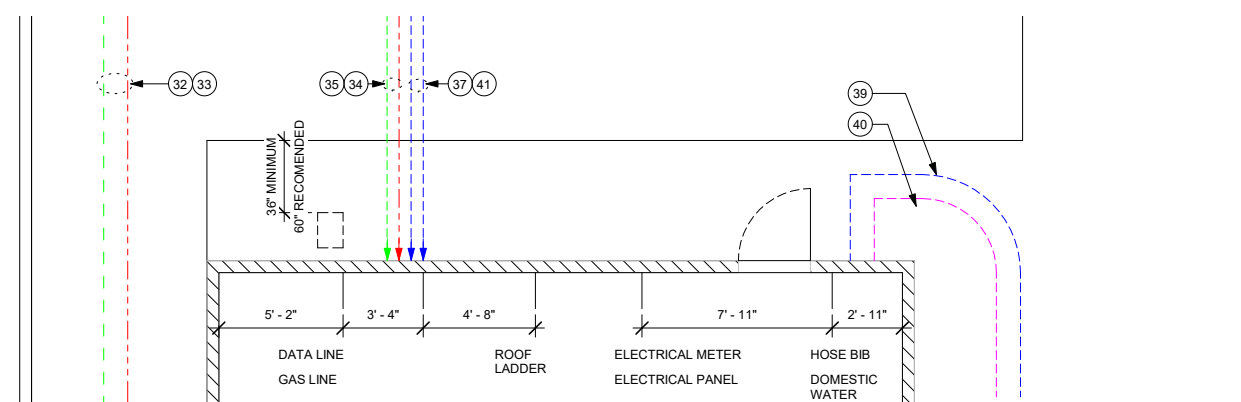
- DETECTOR LOOP TO BE CENTERED ON DT WINDOW. COORDINATE WITH GENERAL CONTRACTOR, TO BE 2" BELOW DT LANE PAVEMENT.
- AUDIO FOR DT SPEAKER. RUN DEDICATED 1" CONDUIT UNDERGROUND TO DT POS.
- VIDEO FOR DOS AND DETECTOR LOOP WIRING TO BE RUN THROUGH DEDICATED 1" CONDUIT UNDERGROUND TO DT POS
- SPARE 1" CONDUIT STUB UP IN BOH NEAR MANAGERS WORKS STATION - FOR FUTURE DATA/SPEAKER.
- SPARE 1" CONDUIT STUB UP IN BOH NEAR MANAGERS WORK STATION - FOR FUTURE AUDIO/ VIDEO AT SPEAKER POST AND DETECTOR LOOP WIRING.
- LIQUID TIGHT UNDERGROUND ENCLOSURE WITH CLOSED BASE FOR FOR PULLING WIRES (IF REQUIRED BY AHJ)
- DOS CANOPY LIGHT, PRE-MENU BOARD, MENU BOARD, DT ENTRY SIGNAGE, OVERHEAD CLEARANCE BAR, AND MERGE SIGNAGE TO BE RUN UNDERGROUND AND CONNECTED TO DEDICATED PANEL CIRCUIT VIA TIME CLOCK
- DETECTOR LOOP TO BE CENTERED ON ORDER SPEAKER. COORDINATE WITH GENERAL CONTRACTOR, TO BE 2" BELOW DT LANE PAVEMENT.
- CONDUIT(S) FOR POWER FOR TENANT'S SITE SIGNAGE, ILLUMINATED BOLLARDS AND IRRIGATION VAULT AS NEEDED.
- CONDUIT(S) FOR SITE LIGHTING AS NEEDED.
- POWER FOR DIGITAL ORDER SCREEN (DOS) ONLY. RUN ON DEDICATED CIRCUIT BACK TO MAIN DISTRIBUTION PANEL (MDP).

LEGEND

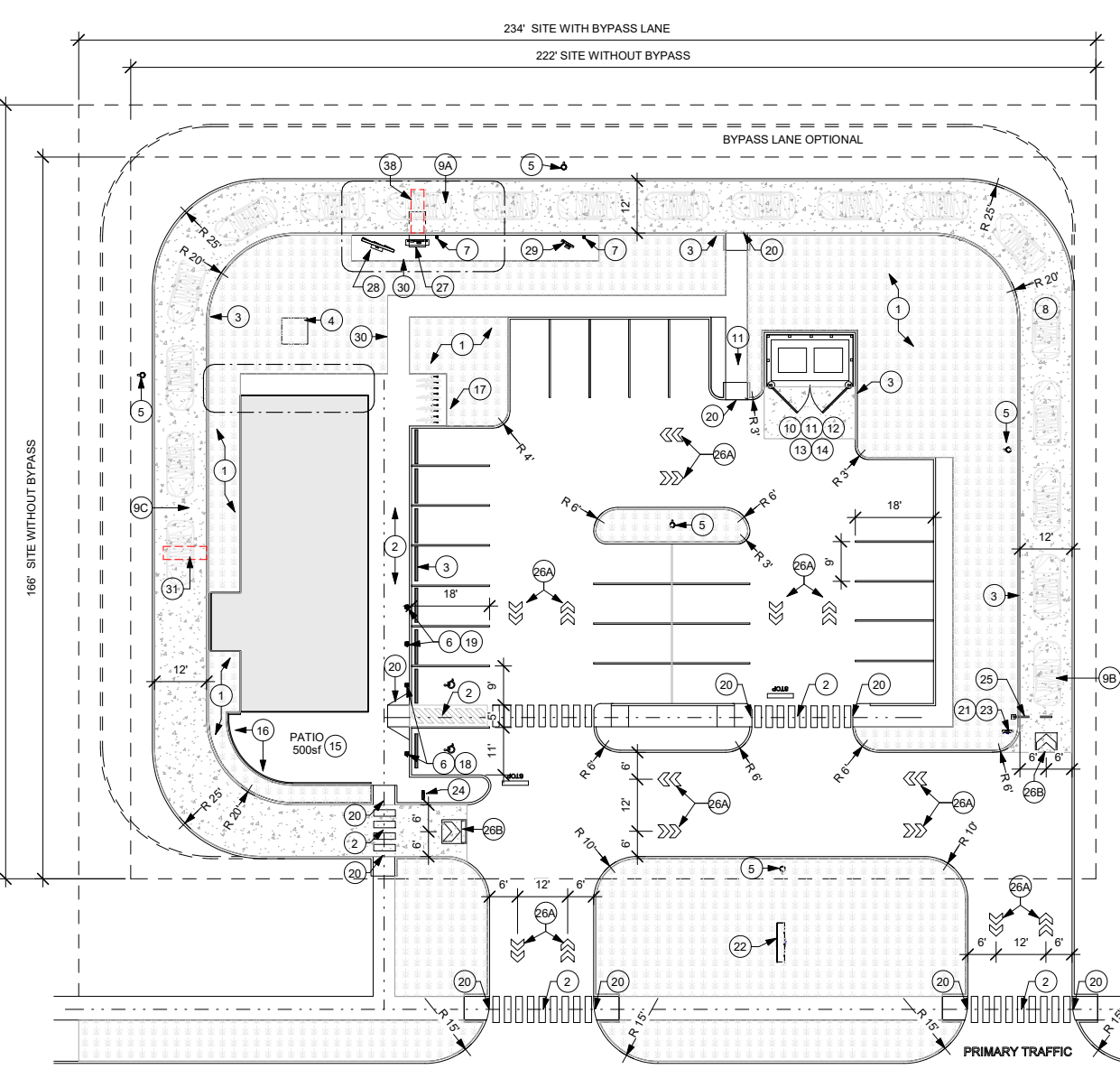
- LANDSCAPE AREA
- NEW CONCRETE WALKWAY
- NEW 6" (150MM) CONCRETE CURB
- CONCRETE DRIVE THRU LANE
- ACCESSIBLE PATH OF TRAVEL
- ELECTRICAL
- DATA
- VOICE



MENU BOARD DETAIL



UTILITY ENTRY PLAN



HIGH VOLUME SITE - MID BLOCK - SINGLE LANE



STARBUCKS
2401 UTAH AVENUE SOUTH
SEATTLE, WASHINGTON 98134
(206) 318-1575

THESE DRAWINGS AND THE PROJECT MANUAL ARE CONFIDENTIAL AND SHALL REMAIN THE SOLE PROPERTY OF STARBUCKS CORPORATION, WHICH IS THE OWNER OF THE COPYRIGHT IN THIS WORK. THEY SHALL NOT BE REPRODUCED (IN WHOLE OR IN PART), SHARED WITH THIRD PARTIES OR USED IN ANY MANNER ON OTHER PROJECTS OR EXTENSIONS TO THIS PROJECT WITHOUT THE PRIOR WRITTEN CONSENT OF STARBUCKS CORPORATION. THESE DRAWINGS AND SPECIFICATIONS ARE INTENDED TO EXPRESS DESIGN INTENT FOR A PROTOTYPICAL STARBUCKS STORE (WHICH IS SUBJECT TO CHANGE AT ANYTIME) AND DO NOT REFLECT ACTUAL SITE CONDITIONS. NEITHER PARTY SHALL HAVE ANY OBLIGATION NOR LIABILITY TO THE OTHER (EXCEPT STATED ABOVE) UNTIL A WRITTEN AGREEMENT IS FULLY EXECUTED BY BOTH PARTIES.

STARBUCKS TEMPLATE VERSION: I2022.04.22

ARCHITECT OF RECORD

THIS DRAWING IS A DESIGN DEVELOPMENT DOCUMENT. SITE SPECIFIC MODIFICATIONS MADE UNDER THE RESPONSIBLE CHARGE OF THE ARCHITECT AND/OR ENGINEER-OF-RECORD WILL BE REQUIRED PRIOR TO USING THIS DOCUMENT FOR BIDDING, PERMITTING, OR CONSTRUCTION.

PROJECT NAME:
<PROJECT NAME>

PROJECT ADDRESS:
<PROJECT ADDRESS>

STORE #: <XXXXX>
PROJECT #: <XXXXX-XXX>
ISSUE DATE: 07-13-2022
DESIGN MANAGER:
PRODUCTION DESIGNER: <DESIGNER>
CHECKED BY: <CHECKED BY>

Revision Schedule			
Rev	Date	By	Description

SHEET TITLE:
HIGH VOLUME SITE - CORNER - SINGLE LANE
SCALE: AS SHOWN

SHEET NUMBER:

05

DESIGN DEVELOPMENT ONLY - NOT INTENDED FOR CONSTRUCTION USE

KEYED NOTES

- LANDSCAPE AREA (REFER TO STARBUCKS STANDARDS)
- ACCESSIBLE PATH OF TRAVEL
- 6" CONCRETE CURB, TYPICAL OR WHEEL STOPS REQUIRED AT BUILDING PAD.
- LOCATION FOR SITE TRANSFORMER
- SITE LIGHT POLE, MAINTAIN A MINIMUM OF
 - SITE ENTRY: 3 FC
 - DRIVE THRU ENTRY: 5 FC
 - BUILDING ENTRY: 10 FC
 - PATIO: 5 FC
 - PARKING AND SIDEWALKS: 1.5 FC
 - SERVICE DOOR: 3 FC
- PARKING BOLLARD
- PARKING AND DRIVE-THRU**
BOLLARDS - NON-ILLUMINATED; PROVIDE NON-ILLUMINATED, PROTECTIVE BOLLARDS IN FRONT OF THE PRE-MENU BOARD, ORDER POINT, AND PICK-UP WINDOW BUMP OUT.
- DRIVE THRU LANE; ENSURE EASY INGRESS AND EGRESS FROM MAIN CUSTOMER TRAFFIC. DO NOT BLOCK PARKING. MINIMUM (1) CAR LENGTH PRIOR TO ENTERING TRAFFIC AFTER PAY/PICKUP WINDOW. AVOID LOCATING UNSIGHTLY ITEMS, SUCH AS GREASE TRAPS OR TRASH ENCLOSURES, IN OR NEAR THE DRIVE THRU LANE.
- QUEUE LENGTH; REVIEW SITE SPECIFIC QUEUING GUIDANCE TO DETERMINE TOTAL QUEUE LENGTH REQUIRED
 - A. CAR STACK; PREFERRED (7) CARS MINIMUM FROM ORDER POINT TO PICK-UP WINDOW. ALLOWS PARTNERS TIME NEEDED TO PREPARE CUSTOMER ORDER AND MAINTAIN SPEED OF SERVICE.
 - B. ORDER TAIL; REVIEW SITE SPECIFIC QUEUING GUIDANCE TO DETERMINE TAIL LENGTH REQUIRED. MINIMUM 3 CAR LENGTH FROM LEASE LINE TO DRIVE THRU ENTRY TO MINIMIZE TRAFFIC BACK-UP INTO STREET, DRIVEWAY, OR PARKING AREA.
 - C. CAR SPACING; ALLOW CARS TO BE SPACED 20' ON CENTER. VERIFY CENTERLINE OF THE DRIVE THRU WINDOW TO CENTERLINE OF THE ORDER POINT OR AT THE 7TH CAR IS 120' MINIMUM.
- TRASH ENCLOSURE**
LOCATION; TRASH AND RECYCLING AREA TO BE LOCATED NO MORE THAN 300 FEET FROM THE SERVICE DOOR. ENCLOSURE SHALL NOT BE UNDER OBSTRUCTIONS WHICH LIMIT ACCESS.
- PATHWAY; PATHWAY FROM THE SERVICE DOOR TO THE ENCLOSURE SHALL BE WELL LIT. ACCESS PATHWAY FROM REAR SERVICE DOOR TO TRASH ENCLOSURE SHALL BE RAMPED (MAX. 1:20) TO ALLOW ROLLING ACCESS.
- HAULER ACCESS; TRASH ENCLOSURE POSITIONED SO THAT HAULER CAN ACCESS CONTAINERS BY FRONT LOAD REMOVAL. TYPICALLY LEAVE 40-45 FEET UNOBSTRUCTED AREA FOR 90-DEGREE TURN. CHECK REQUIREMENTS WITH LOCAL TRASH REMOVAL SERVICES.
- SITE PAVING; PROVIDE 6" THICK SEALED CONCRETE PAVING AT TRASH ENCLOSURE. TO EXTEND 12'-0" FROM FRONT EDGE OF ENCLOSURE TOWARDS HAULER ACCESS POINT.
- HOSE BIB; INCLUDE DRAIN AND HOSE BIB IF ENCLOSURE LOCATED MORE THAN 50 FEET FROM REAR SERVICE DOOR.
- PATIO, SEATING AND SITE AMENITIES**
PATIO AND SEATING; PROVIDE OUTDOOR SEATING AREA, WITH EASY ACCESS FROM TO CAFE SPACE. PROVIDE EXTERIOR RATED SEATING, TABLES, AND ACCESSORIES AS SPECIFIED IN THE STARBUCKS DESIGN CATALOG. PROVIDE ACCESSIBLE SEATING (MIN. 5%) OR PER LOCAL REQUIREMENTS.
- RAILING AND SCREENING; PROVIDE RAILING, VEGETATED BUFFER, AND/OR SCREENING ELEMENT BETWEEN PATIO AND DRIVE THRU LANE. INCLUDE ADDITIONAL SCREENING AS NEEDED TO REDUCE NOISE AND LIGHT TRANSFER TO ADJACENT SITES.
- BIKE RACKS; INSTALL BIKE RACK(S) NEAR MAIN ENTRANCE TO ACCOMMODATE ALTERNATIVE TRANSIT TO THE SITE. LOCATE BIKE RACK AS TO LIMIT PEDESTRIAN DISRUPTION AND MAINTAIN ACCESSIBLE PROVISIONS OF THE SITE
- ACCESSIBLE PARKING SIGNAGE; PROVIDE SIGNAGE AND APPROPRIATE AMOUNT OF ADA PARKING AS REQUIRED BY JURISDICTION.
- MOP/CURBSIDE/PULL FORWARD PARKING SIGN; PROVIDE APPROPRIATE PARKING SIGN, AS DIRECTED BY STARBUCKS.
- PEDESTRIAN RAMP; ACCESSIBLE PEDESTRIAN CONCRETE RAMP WITH A TRANSITION TO ZERO CURB.
- SITE AND DRIVE-THRU (DT) SIGNAGE**
DRIVE THRU DIRECTIONAL SIGNAGE SHOULD BE CLEARLY VISIBLE TO PROVIDE AN EXPERIENCE THAT IS SAFE, CONVENIENT, EFFICIENT, AND EASY TO NAVIGATE. ENSURE LANDSCAPING DOES NOT HINDER SIGNAGE VISIBILITY.
- MONUMENT AND PYLON SIGNS**
ON SPECIFIC SITE CONDITIONS AND LANDLORD REQUIREMENTS. PLACEMENT SHOULD MAXIMIZE VISIBILITY AT MAJOR THOROUGH FARES. CONSIDER DIRECTION OF TRAFFIC, SITE LINES, OBSTRUCTIONS, AND ELEVATION OF SURROUNDING CONSTRUCTION.
- DT DIRECTIONAL ARROW SIGN**; LOCATE AT POINTS WITHIN THE SITE TO PROVIDE DIRECTIONAL WAYFINDING TOWARDS DT LANE. LOCATE SIGNAGE TO MAXIMIZE VISIBILITY FROM PARKING LOT ENTRY AND MAIN CIRCULATION PATHS. (DIMENSION LOCATION FROM CURB)
- DT DIRECTIONAL EXIT/THANK YOU SIGN**; LOCATE AT EXIT OF DT LANE, ON PASSENGER SIDE, WITH "EXIT ONLY" SIDE FACING PARKING LOT. (DIMENSION LOCATION FROM CURB)
- CLEARANCE BAR**; LOCATE AT ENTRANCE TO DT LANE. SET CLEARANCE HEIGHT BASED ON MINIMUM OBSTRUCTION HEIGHT ALONG PATH OF VEHICLE TRAVEL, INCLUDING BUILDING AWNINGS AND/OR ORDER POINT CANOPY. (DIMENSION 12" FROM CURB)
- WAYFINDING PAVEMENT GRAPHICS; HIGH VISIBILITY DIRECTIONAL GRAPHICS, HEAT-APPLIED OR PAINTED ON PAVEMENT.
 - A. DOUBLE ARROWS; SPACE EVENLY WITHIN VEHICULAR CIRCULATION. DO NOT BLOCK PEDESTRIAN PATHS.
 - B. ENTRY/EXIT DT ARROWS; CENTER WITHIN TYPICAL DT LANE. ALIGN EDGE OF GRAPHIC WITH CURB AND ENTRY/EXIT.
- DIGITAL ORDER SCREEN (DOS) AND MENU**
DIGITAL ORDER SCREEN WITH CANOPY; LOCATE ORDER POINT CENTERED ON THE 7TH CAR IN THE QUEUE. SITUATE ORDER POINT SO THAT THE MICROPHONE AND SPEAKER FACE AWAY FROM TRAFFIC, AND CARS CAN PULL UP CLOSE, AVOIDING TIGHT TURNS.
 - A. ALTERNATE; SPEAKER POST IS AVAILABLE IF NEEDED DUE TO SPACE CONSTRAINTS, LANDLORD REQUIREMENTS, SITE RESTRICTIONS, OR BUDGET.
- MENU BOARD**; THE 5-PANEL MENU BOARD IS THE PREFERRED STANDARD. LOCATE ADJACENT TO THE DOS. DO NOT LOCATE ON TURNING RADIUS. DO NOT OBSTRUCT VIEW OF MENU BOARD WITH DOS/CANOPY. CONSIDER SCREENING BEHIND MENU BOARD IF ADJACENT TO EXTERIOR SEATING, SIDEWALK, OR PEDESTRIAN WAY.
 - A. ALTERNATE; 3-PANEL BOARD IS AVAILABLE IF SITE RESTRICTIONS LIMIT USE OF 5-PANEL.
- DT PRE-MENU**; THE PREVIEW BOARD IS AVAILABLE IN WALL-MOUNTED AND FREE-STANDING OPTIONS. LOCATE 1-2 CAR LENGTHS BEFORE ORDER POINT.
 - A. ALTERNATE; IF NO SPACE IS AVAILABLE IN THE DT LANE, THIS ITEM CAN BE REMOVED.
- CURB TRANSITION**; AREA OF TRANSITION FROM LANDSCAPE TO CONCRETE. ADD STRIPING AS APPLICABLE.

GENERAL NOTES

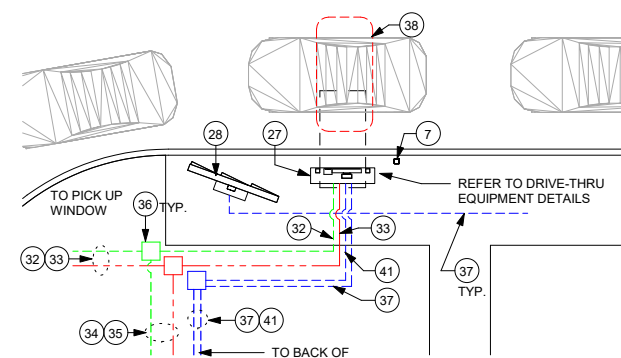
- BUILDING FOOTPRINT APPROXIMATELY 2200 SF, ON 0.85 ACRES, TYPICAL.
- PREFERRED SITE LOCATION ON MAIN PATH OF TRAFFIC WITH EASY INGRESS AND EGRESS. MORNING COMMUTE SIDE PREFERRED OF STREET.
- BUILDING SHOULD BE LOCATED ON SITE TO MAXIMIZE BUILDING PROMINENCE, MAXIMIZE DRIVE THRU QUEUE LENGTH, AND ALLOW EASY ENTRY/EXIT FROM SITE.
- BUILDING TO HAVE CLEAR LINE OF SIGHT FROM VEHICULAR AND PEDESTRIAN TRAFFIC. IT SHOULD BE LOCATED WITHIN 5 MILES OF A FREEWAY, WITH POSTED SPEED LIMIT OF MAIN STREET BELOW 55 MPH.
- SITE INCLUDES ADEQUATE PARKING TO MEET CUSTOMER AND EMPLOYEE NEEDS. INCLUDE 22 STALL MINIMUM DEDICATED PARKING (SUBJECT TO JURISDICTIONAL REQUIREMENTS).
- ALL UTILITIES ENTRIES TO BE LOCATED AT THE REAR OF BUILDING (AS SHOWN). PROVIDE PROTECTIVE BOLLARDS ON BOTH SIDES OF EXTERIOR UTILITY SERVICES ADJACENT TO VEHICULAR TRAFFIC, INCLUDING FIRE STAND PIPE, GAS, ELECTRICAL METERS, SITE TRANSFORMERS, AND TELECOMMUNICATIONS.
- DIMENSIONS ARE TO FACE OF CURB.
- DIMENSIONS SHOWN AS MINIMUM. STARBUCKS APPROVAL REQUIRED TO MODIFY.
- CONDUIT SHOWN OFFSET FOR CLARITY. LOCATIONS ARE FOR REFERENCE ONLY.

ELECTRICAL NOTES

- DETECTOR LOOP TO BE CENTERED ON DT WINDOW. COORDINATE WITH GENERAL CONTRACTOR, TO BE 2" BELOW DT LANE PAVEMENT.
- AUDIO FOR DT SPEAKER. RUN DEDICATED 1" CONDUIT UNDERGROUND TO DT POS.
- VIDEO FOR DOS AND DETECTOR LOOP WIRING TO BE RUN THROUGH DEDICATED 1" CONDUIT UNDERGROUND TO DT POS
- SPARE 1" CONDUIT STUB UP IN BOH NEAR MANAGERS WORKS STATION - FOR FUTURE DATA/SPEAKER.
- SPARE 1" CONDUIT STUB UP IN BOH NEAR MANAGERS WORK STATION - FOR FUTURE AUDIO/VIDEO AT SPEAKER POST AND DETECTOR LOOP WIRING.
- LIQUID TIGHT UNDERGROUND ENCLOSURE WITH CLOSED BASE FOR FOR PULLING WIRES (IF REQUIRED BY AHJ)
- DOS CANOPY LIGHT, PRE-MENU BOARD, MENU BOARD, DT ENTRY SIGNAGE, OVERHEAD CLEARANCE BAR, AND MERGE SIGNAGE TO BE RUN UNDERGROUND AND CONNECTED TO DEDICATED PANEL CIRCUIT VIA TIME CLOCK
- DETECTOR LOOP TO BE CENTERED ON ORDER SPEAKER. COORDINATE WITH GENERAL CONTRACTOR, TO BE 2" BELOW DT LANE PAVEMENT.
- CONDUIT(S) FOR POWER FOR TENANT'S SITE SIGNAGE, ILLUMINATED BOLLARDS AND IRRIGATION VAULT AS NEEDED.
- CONDUIT(S) FOR SITE LIGHTING AS NEEDED.
- POWER FOR DIGITAL ORDER SCREEN (DOS) ONLY. RUN ON DEDICATED CIRCUIT BACK TO MAIN DISTRIBUTION PANEL (MDP).

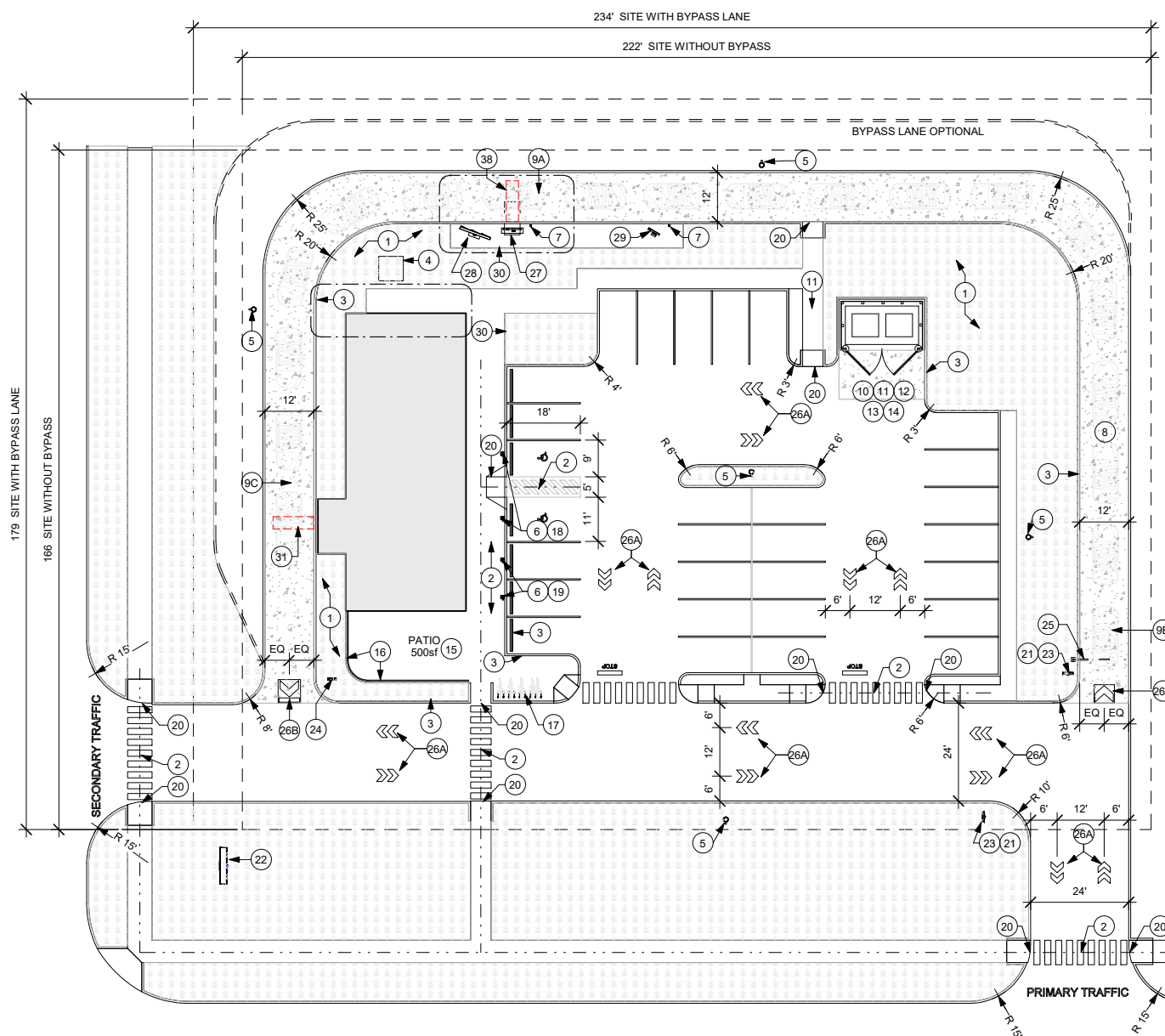
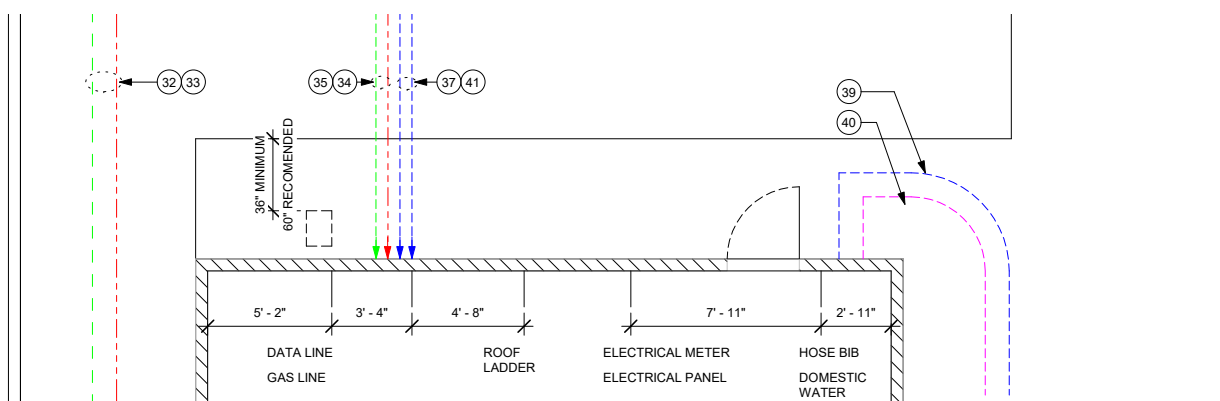
LEGEND

- LANDSCAPE AREA
- NEW CONCRETE WALKWAY
- NEW 6" (150MM) CONCRETE CURB
- CONCRETE DRIVE THRU LANE
- ACCESSIBLE PATH OF TRAVEL
- ELECTRICAL
- DATA
- VOICE



MENU BOARD DETAIL

UTILITY ENTRY PLAN



HIGH VOLUME SITE - CORNER - SINGLE LANE