

Specifications

Exterior:

Roofing - Prepainted Roofing Sheets - Rib Type, 0.40mm

Windows - Steel Casement Type & Jalousie

Walls - Smooth Plain Cement Finish, Painted; Full Coat

Ceiling/Eaves - Fiber Cement Board, Painted - Full Coat

Interior

Floors:

Living/Dining/Kitchen - Smooth Plain Cement Finish

Toilet & Bath - 8"x8" Ceramic Tiles

Stairs - 3/4 Plywood, Painted

Loft - 3/4 Plywood

Walls - Smooth Plain Cement Finish, Painted, Full Coat

Ground Floor (Ceiling) - Fiber Cement Board, Painted, Full Coat

Loft - Fiber Cement Board, Painted, Full Coat

Toilet & Bath - 8"x8" Ceramic Tiles

Doors:

Main Door - Wooden Flush Type, Hollow Core, Painted

Service Area/Bedrooms - Wooden Flush Type, Hollow Core, Painted

Toilet & Bath - PVC Flush Type, Hollow Core

Kitchen Counter:

Kitchen Countertop/Nook - 8"x8" Tiled Countertop with plain cement sides

Kitchen Sink - 16"x24" Galvanized Iron

Base Cabinet - 3/4 Plywood

Toilet & Bath:

Water Closet - Flush Type with Wall Hang

Type Lavatory

Walls - 8"x8" Ceramic Tiles, 2 Layers

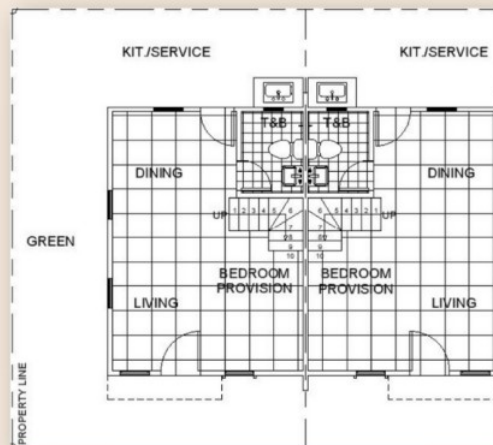
Utilities and Services:

Water Line - uPVC Pipes and Fittings

Electrical - Complete Rough ins & Fixtures

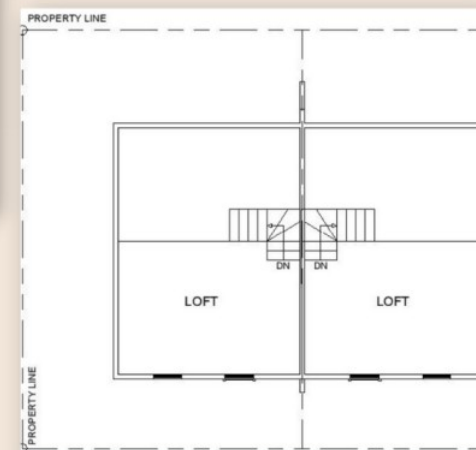
Arhiya High

House Area: 35 sqm
Lot Area: 36 sqm (min)



GROUND FLOOR

SECOND FLOOR



HOUSE FEATURES

- 3/4 Loft
- 1 Toilet & Bath
- Service area