

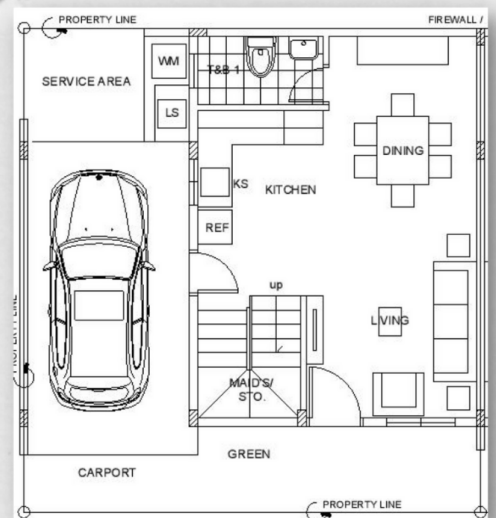


BELLA INNER

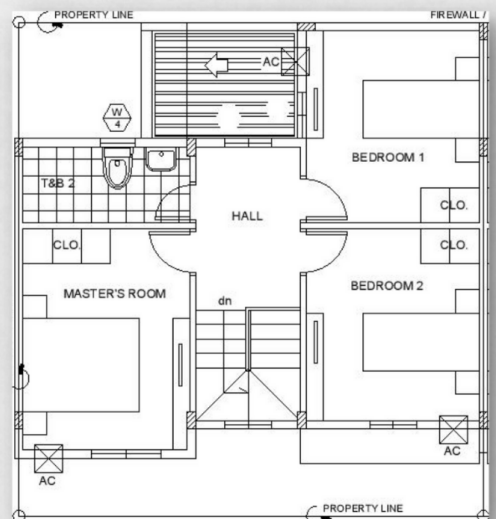
Livable Area/GFA: 83.53 sqm/104.78 sqm
 Lot Area : 68 sqm (min)

HOUSE FEATURES

- 3 Bedrooms
- 2 Toilet & Bath
- Carport
- Fence and Gate
- Landscape



GROUND FLOOR



SECOND FLOOR

Specification

Exterior:

Roofing - Prepainted Long Span Rib Type Sheets with Insulation; Steel Roof Framing

Windows - Aluminum Sliding Window

Walls - Concrete Hollow Block (CHB), Smooth Plain Cement Finish

Wall Accent - Concrete Mouldings

Ceiling/Eaves - Fiber Cement Board Panel, Painted

Carport Flooring - Plain Cement Finish

Gate - Steel Gate

Fence - Concrete with Steel Grills

Gate - Pedestrian and Carport Steel Gate H = 1.50m

Fence - Concrete with Steel Grills (1.00m Concrete + 0.50m Grills for sides fronting the street or alley);

Concrete (H=1.50m for sides not fronting the street or alley).

Interior:

Floors:

Living/Dining/Kitchen - 24"x24" Ceramic Floor Tiles

Bedrooms - 4"x 36" Vinyl Tiles

Toilet & Bath - 12"x 12" Ceramic Floor Tiles

Stairs - 12"x12" Ceramic Floor Tiles

Walls - Smooth Plain Cement Finish , Painted

Bedroom Partition - Fiber Cement Board Panel, Painted

Ceiling:

Ground Floor - Fiber Cement Board Panel, Painted

Second Floor - Slab Soffit, Plain Cement Finish, Painted

Doors:

Main Door - Wooden Solid Panel Door

Service Area/Bedrooms - Wooden Flush Door

Toilet & Bath - PVC Flush Door

Kitchen Counter:

Kitchen Countertop/Nook - 24"x24" Granite Tiles

Kitchen Sink - Stainless Kitchen Sink with Faucet

Base Cabinet - Concrete with Laminated Particle Board for Cabinet Doors

Toilet & Bath:

Water Closet - Flush Type with Seat Cover and Lavatory ,HCG Brand

Shower Set Fixtures - Shower Head, Knob and Faucet (HCG or American Standard, or equivalent)

Walls - Smooth Plain Cement Finish , Painted with 12"x12" Ceramic Tiles 1.20m High

Utilities and Services :

Water Line - PPR Pipes with complete Fittings

Electrical - Complete Set of Electrical Fixtures with Aircon Outlet at Bedrooms and Provision for Heater at Toilet & Bath; Kitchen with electrical provision for Range Hood and Electrical Range Oven

Barangay Bugtong na Pulo,
Lipa City, Batangas