

# Specifications

## Exterior:

- Roofing** - Prepainted Long Span Rib Type Sheets with 2 sided 10mm Insulation; Steel Roof Framing
- Windows** - Aluminum Sliding Window (Bronze Glass)
- Window Screen** - with screen
- Walls** - Smooth Plain Cement Finish, Painted
- Wall Accent** - Concrete Groove
- Ceiling/Eaves** - Fiber Cement Board Panel, Painted
- Carport Flooring** - Plain Cement Finish
- Carport Deck / Balcony** - 12"x12 Ceramic Tiles
- Gate** - Steel Gate H=1.50m (Carport & Pedestrian)
- Fence** - Concrete with Steel Grills Upgraded Fence
- Upgraded Fence and Gate 1.8m (Left, Right, Rear)/ 1.5m (5ft, front)**

## Interior

### Floors:

- Living/Dining/Kitchen** - 16"x16" Ceramic Floor Tiles
- Bedrooms** - Plank Tiles (Deluxe) 9x48
- Attic** - Plank Tiles (Deluxe) 9x48
- Toilet & Bath** - 12"x12" Ceramic Floor Tiles
- Stairs** - Wood Planks, Wood Stain Finish
- Walls** - Plain Cement Finish, Painted
- Bedroom Partition** - Concrete Partition
- Ground Floor (Ceiling)** - Gypsum Board Panel, Painted
- Second Floor (Ceiling)** - Gypsum Board Panel, Painted
- Attic** - Gypsum Board Panel, Painted

### Doors:

- Main Door** - Wooden Solid Panel Door
- Lanai/Balcony** - Aluminum Sliding Door with screen (Bronze Glass)
- Service Area/Bedrooms** - Wooden Flush Door
- Toilet & Bath** - Wooden Flush Door (Marine)

### Kitchen Counter:

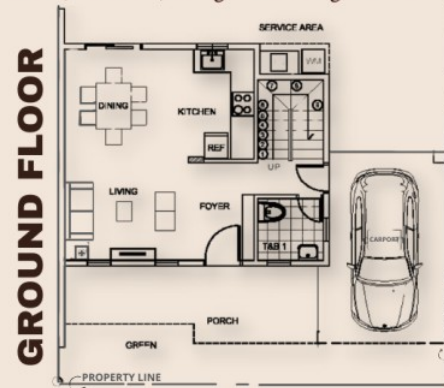
- Kitchen Countertop/Nook** - 24"x24" Granite Tiles
- Kitchen Sink** - Stainless Kitchen Sink with Faucet
- Base Cabinet** - Laminated (Pre-Fab)-Sink & Range Area
- Overhead Cabinet** - Laminated (Pre-Fab) - Range Area

## Toilet & Bath:

- Lavatory** - HCG Wall Hang with Faucet
- Water Closet** - HCG Flush Type with Seat Cover
- Shower Set Fixtures** - HCG or Equivalent (rain shower)
- Walls** - Smooth Plain Cement Finish, with 12"x12" Ceramic Tiles (H=1.50m, Full on Shower Area)
- Attic** - Made of Lightweight materials

## Utilities and Services :

- Water Line** - PPR Dual Piping (Hot and Cold)
- Electrical** - Complete Set of Electrical Fixtures with Aircon Outlet at Bedrooms. Upgraded Electrical System for the entire house. Smoke Detector (all Bedrooms)
- Other Provisions:** Cable TV, Telephone, Water Heater. (all TB), A/C all BR) Kitchen, Range and Range Hood



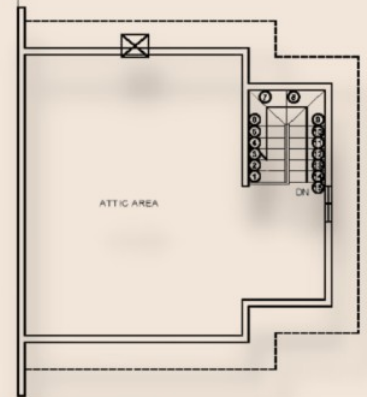
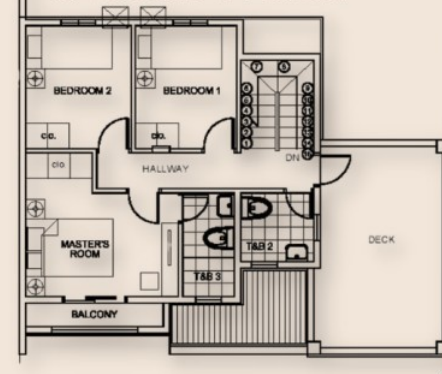
## HOUSE FEATURES

- 3 Bedrooms
- 3 Toilet & Bath
- Attic
- Carport w/ Deck
- Balcony
- Fence & Gate
- Landscape

# Jaya Series 3



## SECOND FLOOR



## ATTIC