

Specifications

Exterior:

Roofing - Prepainted Roofing Sheets - Rib Type, 0.40mm with Insulation

Roofing Accessories - Prepainted Gutter, Flashing, Capping 0.4mm

Roof Framing - Steel Rafter/Truss & Purlins

Windows - Sliding Window in Analok Frame & Jalousie

Walls - 4" thick Concrete (Cast in Place), Smooth Plain Cement Finish, Painted; Full Coat

Ceiling/Eaves - Fiber Cement Board, Painted - Full Coat

Gate - Concrete Fence, Painted, H=1.50m

Fence - Steel Gate, Painted, H=1.50m

Interior

Floors:

Ground Floor - Slab on Fill, 16" x 16" Ceramic Tiles

Stairs - 2" Concrete in Angular Bar Framing, with Handrail & Ballustrs, 4" x 36" Vinyl Tiles

2nd Floor - Reinforced Concrete, 4" x 36" Vinyl Tiles

Toilet & Bath: 12" x 12" Ceramic Tiles

Walls:

Walls - 4" thick Concrete (Cast in Place), Smooth Plain Cement Finish, Painted; Full Coat

Bedroom Partition - Fiber Cement Board, Painted - Full Coat

Ceiling:

Ground Floor (Ceiling) - Under Slab, Painted- Full Coat

2nd Floor - Fiber Cement Board, Painted, Full Coat

Doors:

Main Door - Wooden Panel Type Door, Painted

Bedroom: Wooden Flush Type, Hollow Core, Painted

Service Area - Wooden Flush Type, Hollow Core, Painted

Toilet & Bath - PVC Flush Type, Hollow Core

Kitchen Counter:

Kitchen Countertop - 24"x24" Granite Tiles

Kitchen Sink - 16"x24" Galvanized Iron

Base Cabinet - 3/4 Plywood, Painted

Toilet & Bath:

Water Closet - Flush Type with Wall Hang Type Lavatory

Walls - 4" Thick CHB, 12" x 12" Ceramic Tiles, 4 Layers

Utilities and Services :

Water Line - uPVC Pipes and Fittings

Sanitary Line - PVC Pipes and Fittings

Septic Tank - PVC Septic Tank

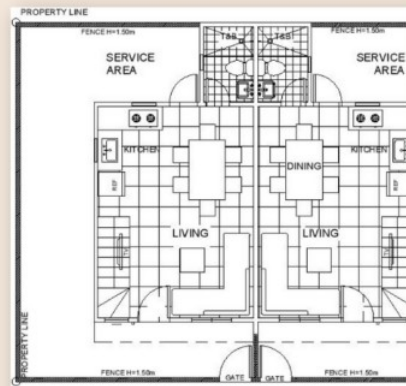
Electrical - Complete Rough ins & Fixtures

Arhiya **Townhouse** COMPLETE

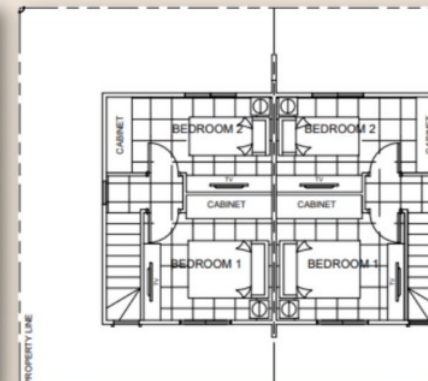


HOUSE FEATURES

- 2 Bedrooms
- 1 Toilet & Bath
- Service Area
- with Second Floor



GROUND FLOOR



SECOND FLOOR