

Conservation practices eligible for cost share

Fence

- Permanent fence available to exclude livestock from creeks, ponds, woods
- Permanent/temporary cross-fence available to facilitate rotational grazing. Must have a minimum of 5 paddocks/10 acres each.
- Boundary fence not eligible.

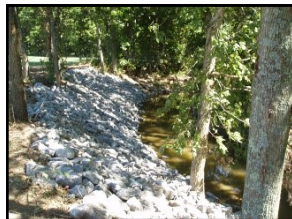
Stream Crossing

- Available where livestock need a crossing point on a stream and/or to provide livestock water.
- Stream must be fenced or planned to be fenced.



Streambank Stabilization

- Fencing is required where cattle are present.
- A filter strip or riparian buffer is required with this practice.



Waste Storage Facility

- Feeding floor is not eligible for cost share.
- A comprehensive nutrient management plan is required.
- Must be used to control manure storage, not for hay storage.
- Composting facilities are included in cost share.



Heavy Use Area

- Must be part of a rotational grazing system and only installed on pastureland.



Pasture and Hayland Erosion Control

- To prevent erosion and/or gullies from forming in pasture and hay fields.
- Must fertilize and lime according to soil tests.
- May include grading/shaping as necessary for site preparation.

Additional Practices:

- Vegetative Filter Strips
- Sinkhole Protection
- Cropland Erosion Control System
- Integrated Crop Management
- Forest Land Erosion Control System
- Pesticide Containment Facilities
- On-farm Fallen Animal Composting
- Rotational Grazing System
- Water Well Protection
- Strip Intercropping System
- Riparian Area Protection
- Water Well Protection
- Closure of Agriculture Waste Impoundment
- Precision Nutrient Management Incentive
- Soil Quality Health Improvement

Pipeline and Watering Facility.

- The purpose to distribute grazing. Must be part of a rotational grazing system and have a grazing plan developed by NRCS.
- Only permanent tanks/fountains and in-ground pipelines eligible.
- Confined lots are not eligible.



Spring Development

- Livestock must be present.
- Authorized to facilitate livestock grazing.
- Must be fenced from livestock.

Pond

- Eligible only where there is no other source of water.
- Must incorporate a rotational grazing plan.
- Must be fenced with pipeline and tank placed below dam.
- Ponds and Spring Developments will be considered for funding only when they are the most cost-effective method.



Animal Waste Utilization

- Soil and manure tests required.
- Must have an existing or planned storage facility.
- A CNMP is required.

Kentucky Soil Erosion and Water Quality Cost Share Program

was established to help landowners address existing soil erosion, water quality and other environmental problems associated with their farming or woodland operation. It also helps landowners implement their Agriculture Water Quality Act plans. (Note: Ag Water Quality plan is required to be eligible for this program)

- Funding for practices will be approved by the Soil and Water Conservation Commission at the Kentucky Division of Conservation, located in Frankfort, as funds are available.
- Funds are for new practices only and cannot be applied to practices that have already been started or completed.
- Cost share assistance shall be limited to 75% or 60% (depending on practice installed) of the actual cost not to exceed payment rate established for each practice.
- Program is administered by the Conservation Districts in accordance with the Natural Resources Conservation Service Technical Guide.
- Approved applicants will have one year to complete practices.
- For more information, visit: <http://conservation.ky.gov/Pages/StateCostShare.aspx> (State Cost Documents).



Kenton County Conservation District

Kenton County Independence Courthouse
Second Floor, 5272 Madison Pike
P. O. Box 647, Independence, KY 41051

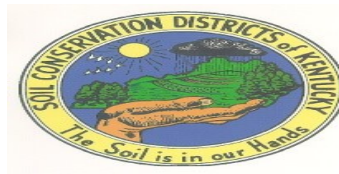
Monday - Friday

8:00 a.m. - 4:00 p.m.

Phone: (859) 356-1019

E-mail: admin@kccdky.org

<https://www.kccdky.org>



Natural Resources Conservation Service

6028 Camp Ernst Road

Burlington, KY 41005

(Phone) 859-586-7903 Ext 3



Kentucky Soil Erosion & Water Quality Cost Share Program



Application Dates:

Continuous Signup

Ranking cut off date traditionally in March