



MonaLisa *Touch*[®]

A NOVEL LASER FOR YOUR
gynecologic health

IT'S OKAY *to talk about it*

“It” refers to changes in gynecologic health and it happens to many women as they age.



YOU ARE NOT ALONE

at this time in your life



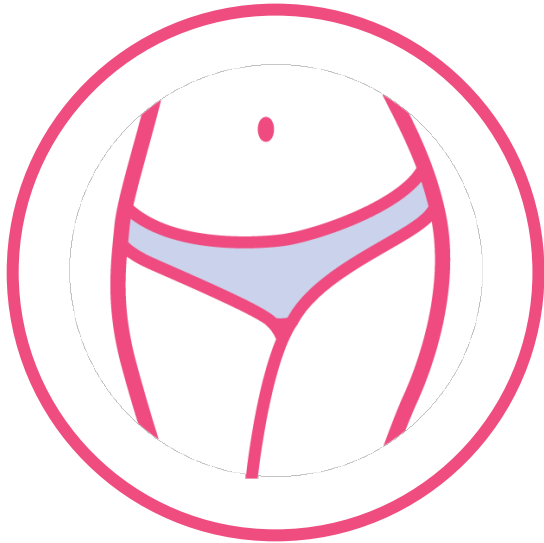
Millions of women may be suffering in silence due to changes to their gynecologic health, but they don't have to.

**YOU DESERVE
TO FEEL**
like yourself again

Lasers offer a

UNIQUE OPTION FOR PATIENTS **TS**

MonaLisa Touch



MonaLisa Touch (MLT) is a fractional CO₂ laser that may help with your gynecologic health.

MonaLisa Touch is
**NON-HORMONAL
& CHEMICAL-FREE**

MonaLisa *Touch*



MonaLisa Touch[®]

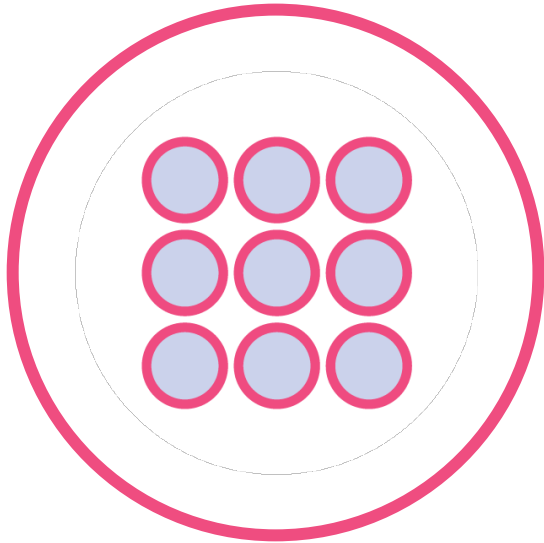
For millions of women, MonaLisa Touch is a simple, proven laser device for use in gynecologic health.



How does it work?

FRACTIONAL CO₂ LASER

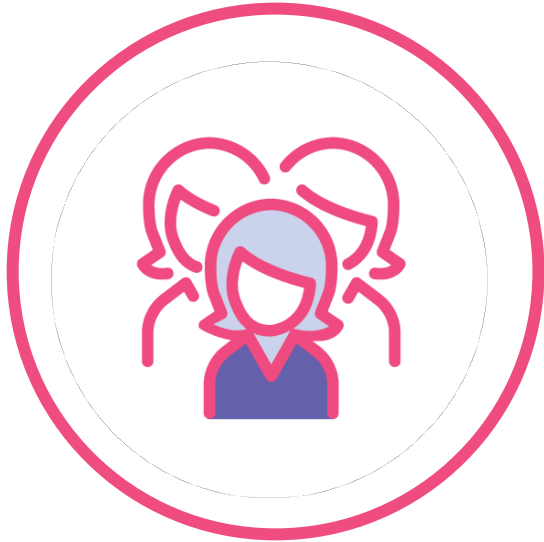
MonaLisa Touch



The MonaLisa Touch laser is a device for gynecologic use that delivers laser energy to tissue. This is followed by the body's natural healing response.

THOUSANDS OF WOMEN *have chosen MonaLisa Touch*

MonaLisa Touch



The MonaLisa Touch procedure was the first gynecologic laser offered globally in 2012 and became available in the US in 2014. You can feel confident knowing that it's a trusted device.

UTILIZED AND RESPECTED

by researchers worldwide

MonaLisa Touch

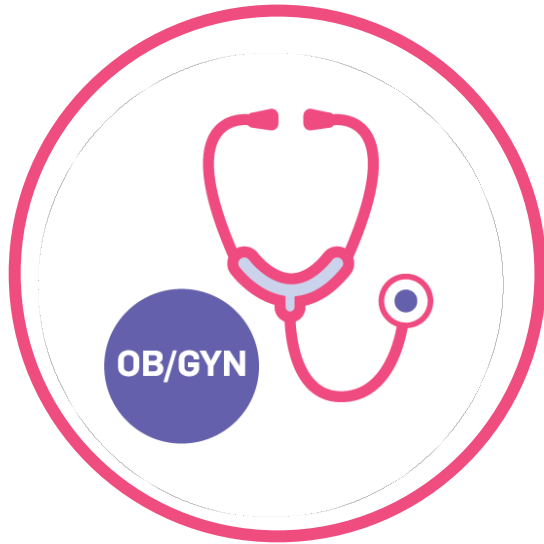


MonaLisa Touch is a well-studied laser and has been accepted by experts in female pelvic health around the world.

What makes it unique?

FRACTIONAL CO₂ LASER

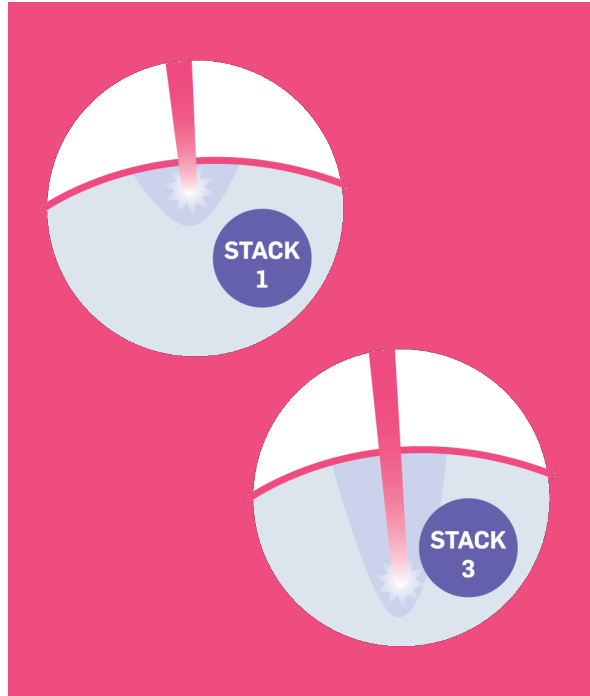
MonaLisa Touch



Unlike other lasers, SmartXide Touch which is used to deliver the MonaLisa Touch procedure, was designed for gynecologic use to meet the needs of OB/GYN patients.

Deeper penetration of tissue WITH UNIQUE TECHNOLOGY'

MonaLisa Touch



The fractional laser technology within the MonaLisa Touch device has proprietary stacking technology, which is a repetitive firing of the laser with more concentrated energy to target deeper levels of the tissue.

Backed by leaders

IN LASER SOLUTIONS & WOMEN'S HEALTH

MonaLisa Touch



The global champion of women's health, dedicated to improving and saving lives through early detection and proactive treatment.



A leading innovator of a broad array of light-based aesthetic and medical treatment systems. Products are used to provide a diverse range of treatment applications such as hair removal, skin revitalization, scar reduction, and more.

What to Expect

MonaLisa Touch[®]

NON-SURGICAL

in the comfort of the office

MonaLisa Touch



The procedure is performed here in our office during a routine outpatient appointment.

A CONVENIENT PROCEDURE

MonaLisa Touch

that fits in your schedule



The procedure time is less than 5 minutes and can be scheduled at your convenience.

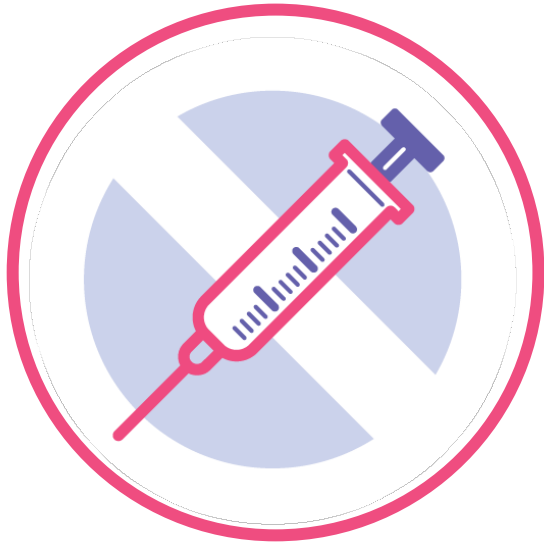
A SIMPLE PROCEDURE *or a series of them*



A short series of laser sessions may be recommended by your physician.

A well tolerated **IN-OFFICE PROCEDURE**

MonaLisa Touch



The MonaLisa Touch procedure typically requires no anesthesia.

MINIMAL DOWNTIME

with few side effects

MonaLisa Touch



Most patients resume their routines within a few days of the procedure and side effects are typically mild or unnoticeable in most cases. For a full list of warnings and indications, visit smilemonalisa.com.

Frequently asked
QUESTIONS

How long

UNTIL I CAN HAVE SEX?

MonaLisa Touch



It may be recommended that you wait ~2-3 days for any contact in the lased area. Talk with your physician post-procedure.

How long **WILL IT LAST?**



Everyone is unique and our skin ages pre and post-procedure. You and your physician should discuss your needs and expectations.

QUESTIONS?

**BOOK AN
APPOINTMENT
TODAY**
you're worth it!

IMPORTANT TO NOTE:

Like all medical procedures, not all patients are suitable for the treatment. Talk to your medical provider who will review the risks and benefits of this procedure with you.

Indications

- The SmartXide Touch Laser (MonaLisa Touch Therapy) is indicated for incision, excision, ablation, vaporization and coagulation of body soft tissues in medical specialties including aesthetic (dermatology and plastic surgery), podiatry, otolaryngology (ENT), gynecology, neurosurgery, orthopedics, general and thoracic surgery (including open and endoscopic), dental and oral surgery and genitourinary surgery. Use with the scanning unit is indicated for ablative skin resurfacing.

Contraindications

- Therapy using the SmartXide Touch laser is contraindicated for those patients who:
- Have vaginal, cervical, or other lesions in the treatment area that have not been evaluated and diagnosed
- Have active vaginal or vulvar infection i.e., (herpes, candida, STDs)
- Pregnant or within 3 months postpartum
- Have vaginal prolapse beyond hymen
- Have history of radiation to vaginal/ colo-rectal tissue
- Have history of reconstructive pelvic surgery with “mesh kits”
- Have a history of impaired wound healing
- Have a history of keloid formation
- Known anticoagulation treatment or thromboembolic condition

- **NOTE:** A qualified practitioner is solely responsible for evaluating each subject's suitability to undergo laser treatment and for informing those being treated about any risks involved with the treatment, pre-and postoperative care, and any other relevant information. Like all medical procedures, not all patients are suitable for the treatment. Physicians and patients should discuss the treatment and review the risks and benefits of this procedure.

Warnings and Cautions

- **WARNING:** The SmartXide Touch Laser can cause eye injury. Never use this device without protective eyewear.
- **CAUTION:** Use of controls, adjustments, or performance of procedures other than those specified herein may result in hazardous radiation exposure. To avoid these hazards, the precautions described in the Operator's Manual must be observed when installing, operating, moving or servicing the system.
- **CAUTION:** Since the Probe, Vaginal Ring, and Handpiece may become contaminated with blood, fluids or human tissue, they must be cleaned and disinfected /sterilized after every treatment.
- **CAUTION:** Laser plume or smoke produced by the laser beam may contain live tissue. Use of a smoke evacuator is advised if plume is present.
- **CAUTION:** Exceeding the Smart Stack recommended maximum setting increases the risk of collateral thermal injury and increases wound healing time.

Side Effects

- Possible side effects may include: Spotting, mild vaginal bleeding, pink or brown vaginal discharge, mild to profuse watery vaginal discharge, redness, swelling, inflammation, tenderness, itching, irritation, burning upon urination, pinpoint bleeding and discomfort.

POTENTIAL RISKS AND SIDE EFFECTS

Possible side effects in the treated area may include:

- Mild pinpoint spotting or bleeding
- Pink, brown or watery discharge
- Redness, swelling, or inflammation
- Tenderness, itching, irritation, burning upon urination
- Discomfort

Practices may elect to have patient sign a consent form that they are aware of the indications and potential side effects.

MonaLisa Touch®