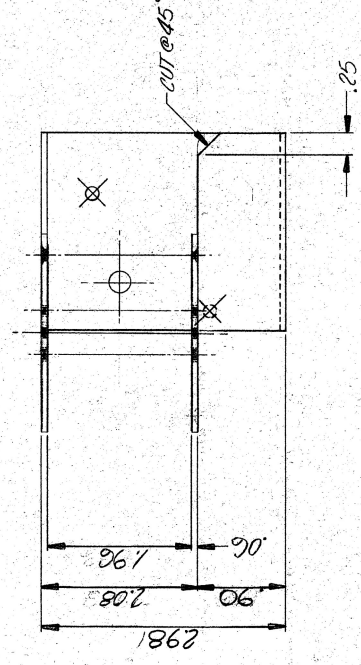
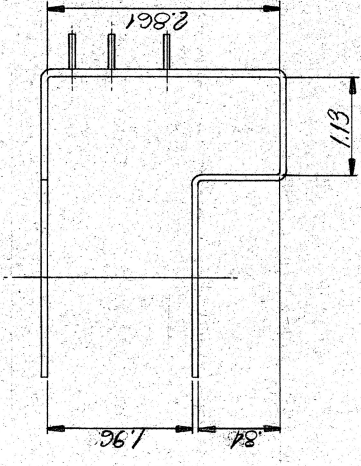
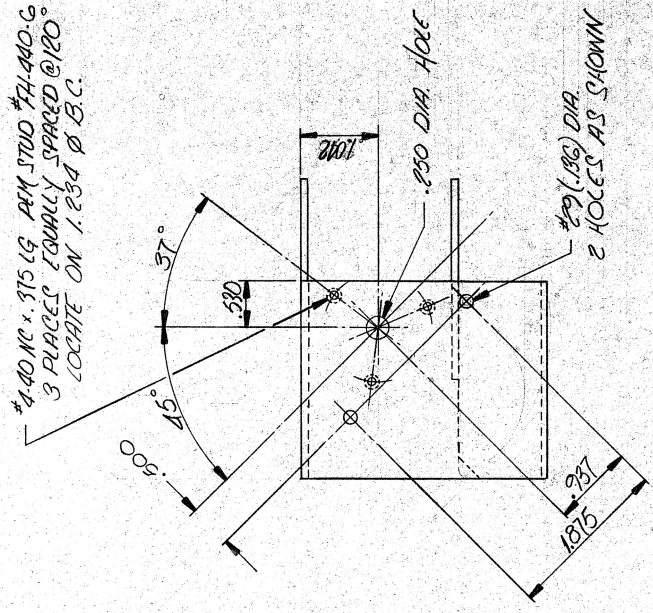
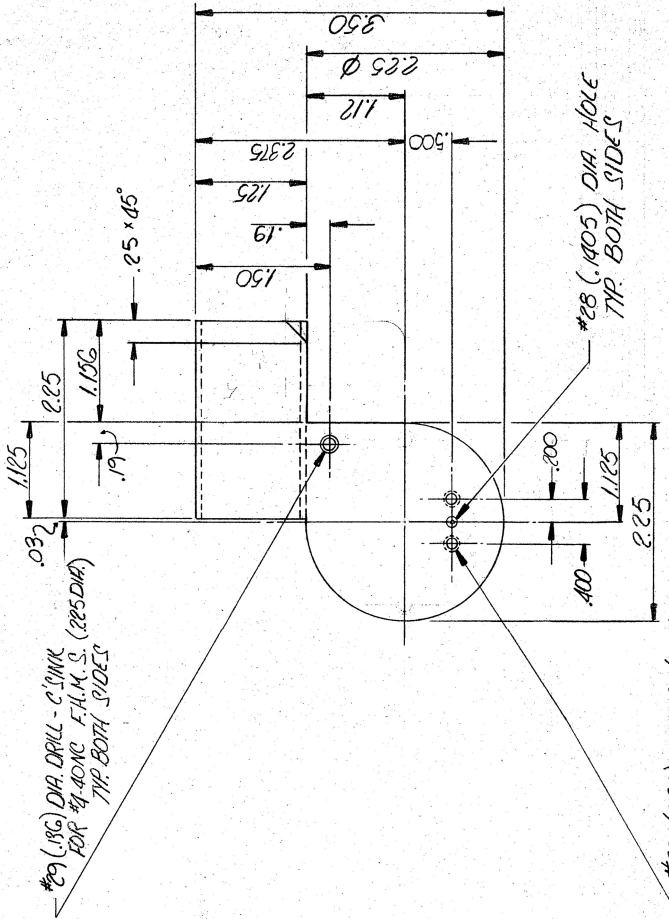


REV.	DESCRIPTION	DATE	BY
1	REDESIGNED & REDRAWN	5/18/83	MMQ



- NOTES
1. TOLERANCES
 .XX = ±.02
 .XXX = ±.005
 2. FINISH - BLACK ANODIZED

ELBOW JOINT #1	
SCALE: 1/2" = 1"	APPROVED BY: MMQ
DATE: 5-28-83	REVIEWED:
MATERIAL: .06 ALUM. (5052 H90)	
PART NO: 20-0002	
REV: 1	