

CATEGORY 6 UNSHIELDED PATCH CORD



BELLCOM
TECHNOLOGIES
www.bellcomt.com

DESCRIPTION

Category 6 Patch Cords Stranded
UTP 24 AWG Snagless Head

FEATURES

- 24 AWG High Performance Stranded Bare Copper
- Guaranteed performance to 250MHz
- Superior cable flexibility from stranded cores
- Boot maintains correct bend radius to ensure maximum performance
- Connector: 8P8C , RJ45, 50 inch gold plating
- RoHS compliant

APPLICATION

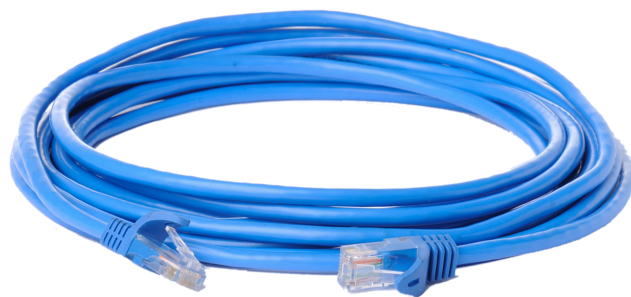
- 10GBASE-T Ethernet
- 1000BASE-TX/ 1000BASE-T Gigabit Ethernet
- 100BASE-TX Fast Ethernet
- 10BASE-TX Ethernet

APPROVAL

- UL/cUL Listed
- Certified Category 6 Channel Testing Performance Requirements

BELLCOM TECHNOLOGIES

www.bellcomt.com



TECHNICAL DATA

Conductors	Stranded Bare Copper 24 AWG
Insulation	High Density Polyethylene (HDPE)
Plugs	8P8C Modular Plugs (RJ45)
Contacts	50 µin gold plate
Operating Temperature	-20°C to 70°C
Voltage Rating	300 V
Fire Rating	UL444
Insulation Resistance	Min. 5000 MΩ km
Conductor Resistance	Max. 9.38 Ω/100m

Technical Drawing



Colors Available

