

Mixed-Use Industrial

DEF Manufacturing

Client: DEF Manufacturing

Project: Mixed-Use Industrial

Location: 3100 Rhodes Dr, Windsor, ON

3100

Date: 12-06-22

Designer: Jacob Barbarossa, M.Arch

Site Context

3100
Rhodes Drive,
Windsor, On.

In 1856, entrepreneur Hiram Walker purchased 468 acres of farmland east of Windsor to expand his small whiskey business, he decided to design a safe place for his family and employees on the Canadian shores and by 1890 the construction of Walkerville was underway.

The current architectural theme in Walkerville reflects the vision Hiram Walker had back in 1856 and the influence he had on the community.

Typical architecture in the Walkerville area is based off of the Queen Anne Revival style. This style was popular during the late Victorian era and is characterized through its offset forms, elaborate ornamentation, and a variety of stone textures and materials.



Site Plan

3100 Rhodes Drive, Windsor, On.

The unconventional site allowed for innovative spatial planning in the stead of regular repetition too often proposed within new commercial structures. With a prominent position among major crossings, an opportunity arose to focus on community through historical value. Entrances were maintained and the project was kept close to its boundaries, allowing for future expansion and possible development within a booming industrial hub.

Hard surfaces were minimized while green spaces were expanded upon, reducing run-off into municipal systems. A courtyard was positioned as a gathering node, acting as an oasis for employees to enjoy, while doubling as a screen to filter the operations of the building from the street.



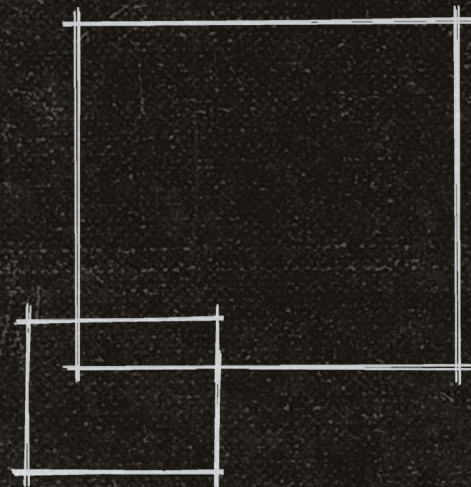
Floor Plan Design

A manufacturing plant is typically not the place where one may find refined architectural design, focusing solely on low budgets, quick construction, and high functionality. Yet, DEF Manufacturing brings a new perspective to industrial design, built to commemorate the industrial history of Walkerville and blend two eras together.

As seen in traditional Walkerville architecture, the office space utilizes natural light and simple angle work to convey a functional yet uncomplicated design. While also utilizing traditional masonry techniques such as a CMU structure and a rustic brick façade. The warehouse portion uses a modern approach of blending aluminum siding and steelwork seamlessly into the traditionally designed office space.

Approach

Separating warehouse & office



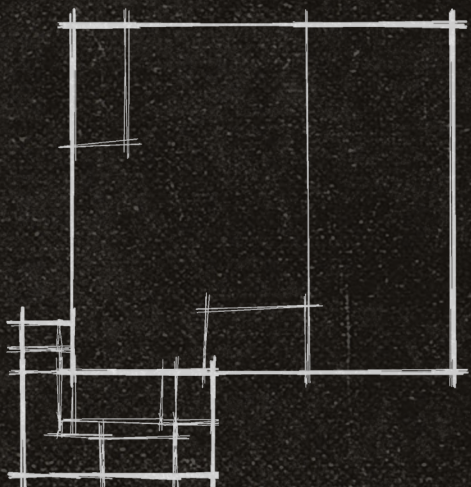
Massing

General form & scale



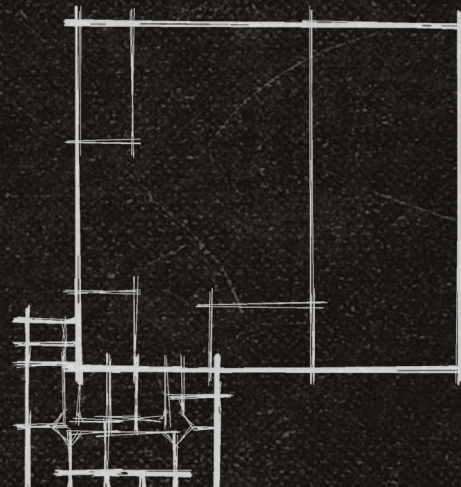
Program Separation

Required space division



Development

Refining final spaces



- Flex
- Public
- Private

Public and private zones of the building have been separated without being divided, allowing various points of entry for personnel to collaborate between shop and management.



Signage



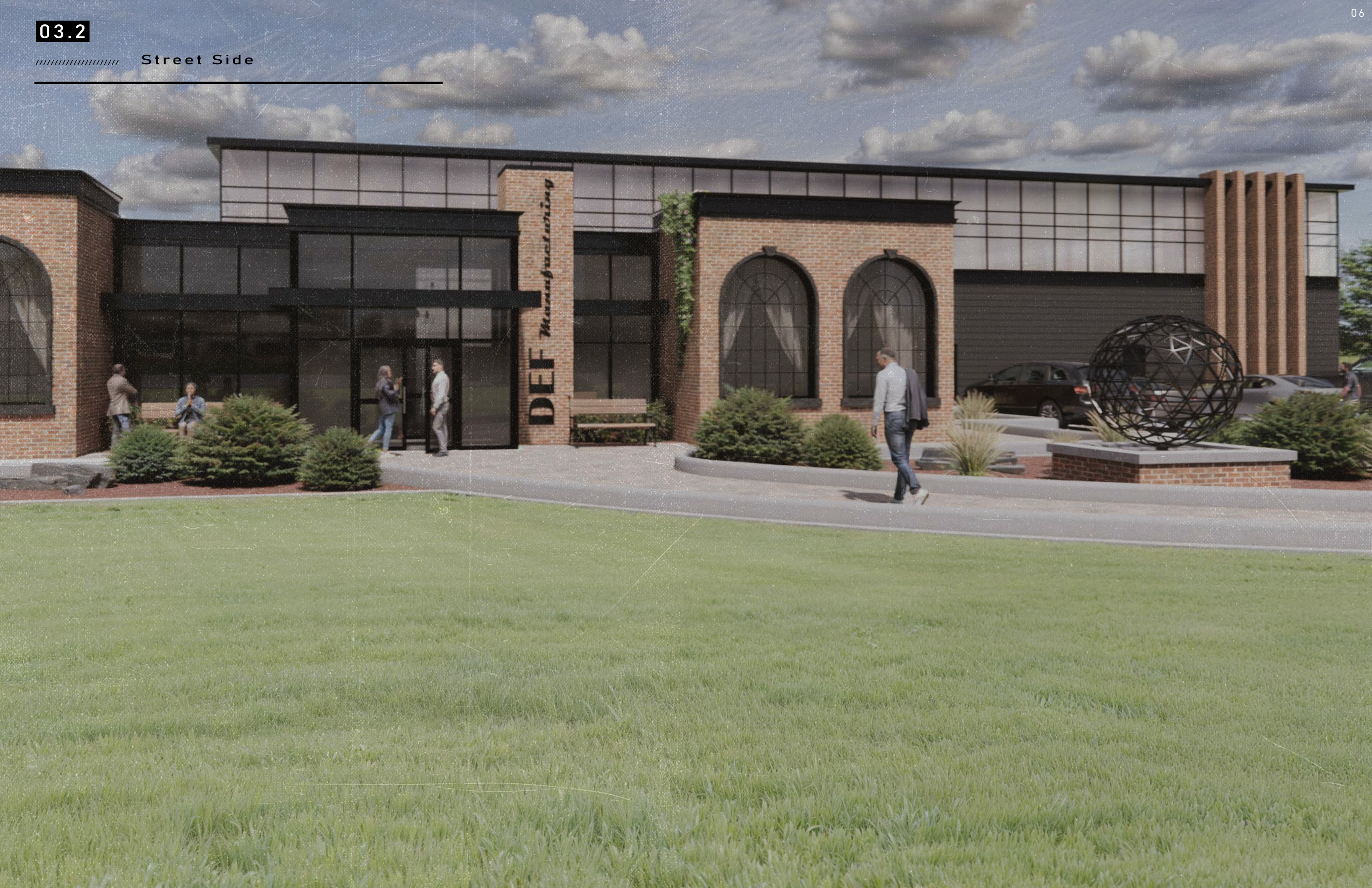
Manufacturing

EE
A

////////// Entrance



Street Side



////////// Courtyard



////////// Loading Dock





Conference Room



