



BMV
Vertical Multi-stage
Centrifugal Pumps



Barmesa[®]
Pumps

Quality Pumps Since 1953

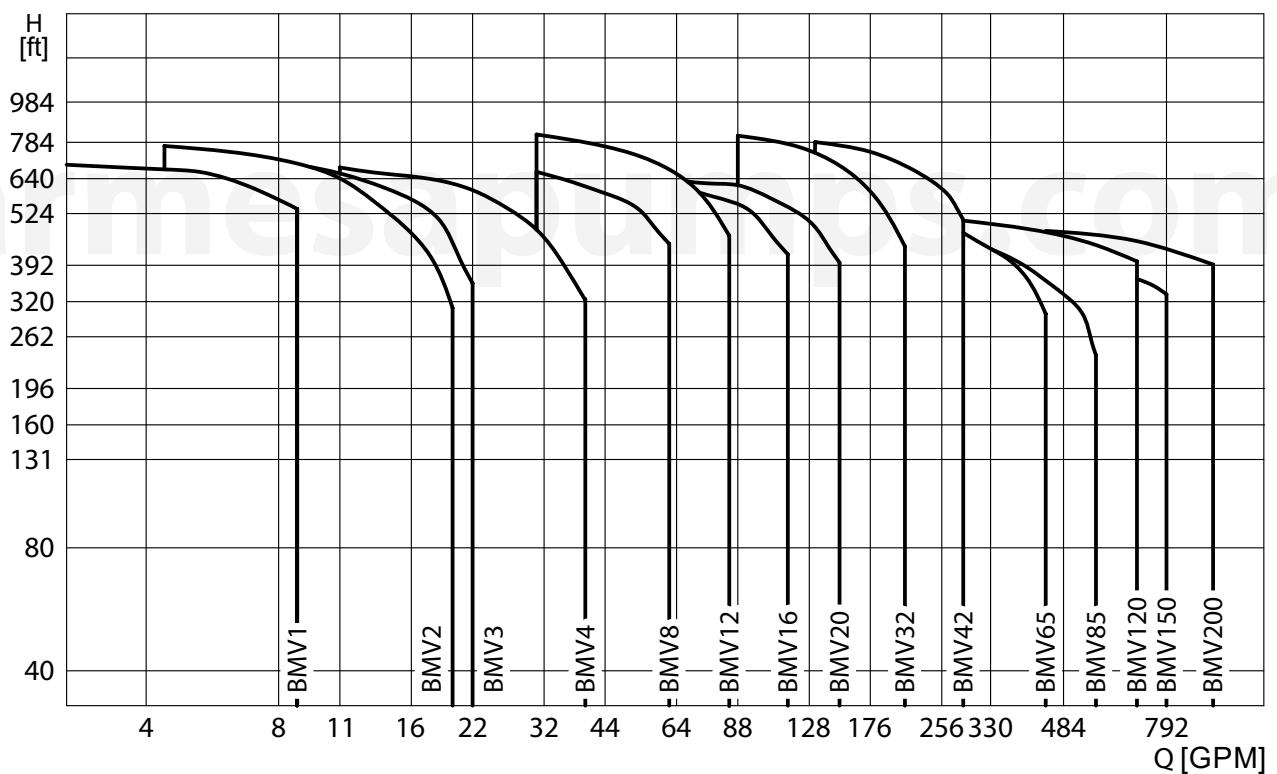
Vertical multi-stage pump	01
Performance curve	01
Nomenclature	01
NPSH	02
Operation in parallel	03
Motor	03
Maximum inlet pressure	03
Material	05
Curve BMV1	07
Curve BMV2	08
Curve BMV3	09
Curve BMV4	10
Curve BMV8	11
Curve BMV12	12
Curve BMV16	13
Curve BMV20	14
Curve BMV32	15
Curve BMV42	16
Curve BMV65	17
Curve BMV85	18
Curve BMV120	19
Curve BMV150	20

Vertical multi-stage pump

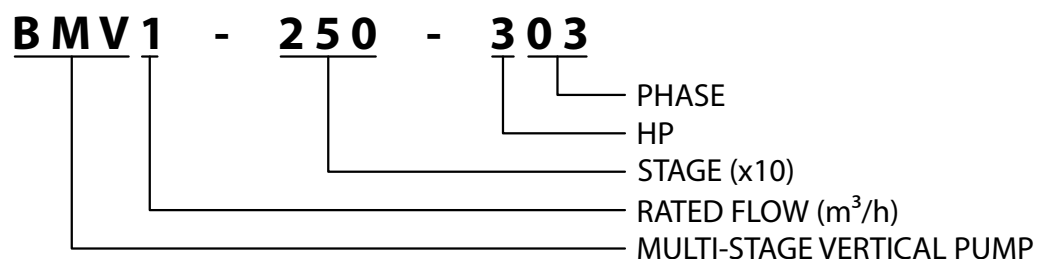
The BMV pump is designed to handle neutral clean liquids. It is a multifunctional product designed to transfer and boost water from various sources. The BMV pump is also designed to transfer and boost liquid at different temperature and with different flow rate and pressure.

- ▶ Pumped liquids: low viscosity, neutral, non-explosive liquids, not containing solid particles or fibers. The liquid must not attack the pump materials chemically.
- ▶ Boiler water supply and condensing system.
- ▶ Water treatment, filtration system.
- ▶ Food and beverage industries.
- ▶ Pressure boosting in high-rise buildings.
- ▶ Farmland irrigation, nursery irrigation and golf court irrigation.
- ▶ Industry cleaning system.
- ▶ Liquid transfer, circulation and boosting.
- ▶ Hot and cool water.

Performance curve



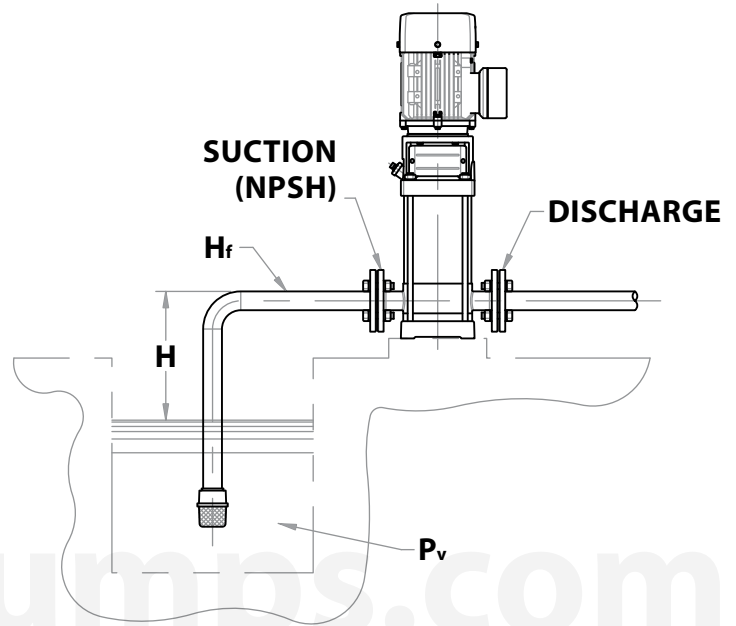
Nomenclature



In case that the pressure in pump is lower than the steam pressure used to transfer the liquid, cavitation will occur. To avoid cavitation, a minimum pressure at the inlet side of the pump shall be controlled. The maximum suction pressure can be calculated with following formula:

$$NPSH_D = P_B - H - P_v - H_f$$

- **NPSH_D** = net positive suction head available (feet).
- **P_B** = atmosphere pressure (bar). In a closed system, P_B means system pressure.
- **H** = maximum suction height.
- **P_v** = steam temperature pressure. This value must be obtained from steam temperature pressure tables (see Table 1).
- **H_f** = pipeline friction loss (feet).



If the calculated result H is positive, the pump may run under the maximum suction pressure H. In case the calculated result H is negative, a required head of minimum inlet pressure is necessary.

It is important to calculate the maximum suction height when hot liquids are pumped, when the pipeline friction loss is high or when the water is suctioned from great depths.

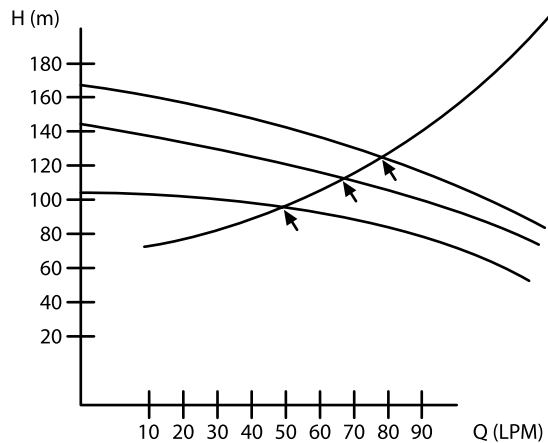
Table 1: Steam temperature pressure.

Temp. °F	Temp. °C	Steam pressure PSI Abs	Steam pressure Feet Abs	Temp. °F	Temp. °C	Steam pressure PSI Abs	Steam pressure Feet Abs
32	0	0.0885	0.204	120	48.9	1.692	3.943
40	4.4	0.1217	0.281	130	54.4	2.223	5.196
45	7.2	0.1475	0.34	140	60	2.889	6.766
50	10	0.1781	0.411	150	65.6	3.718	8.735
55	12.8	0.2141	0.494	160	71.1	4.741	11.172
60	15.6	0.2563	0.591	170	76.7	5.992	14.178
65	18.3	0.3056	0.706	180	82.2	7.51	17.825
70	21.1	0.3631	0.839	190	87.8	9.339	22.257
75	23.9	0.4298	0.994	200	93.3	11.526	27.584
80	26.7	0.5069	1.172	212	100	14.696	35.353
85	29.4	0.5959	1.379	220	104.4	17.186	41.343
90	32.2	0.6982	1.617	240	115.6	24.97	60.77
95	35	0.8153	1.89	260	126.7	35.43	87.05
100	37.8	0.9492	2.203	280	137.8	49.2	122.18
110	43.3	1.275	2.965	300	148.9	67.01	168.22

Operation in parallel

Connecting several pumps in parallel operation for higher pressure requirements will result in a more efficient system performance. Operating multiple pumps offers greater advantages versus running a single larger pump.

- ▶ Example: A dual or multiple pump system provides continuous water supply if and when a pump becomes inoperative. In the case of a pump failure, only part of the system flow is affected.



Two pumps or more can be connected for parallel operation if necessary.

Premium efficiency motors

- ▶ Totally enclosed, fan-cooled, standard efficiency.
- ▶ 2 pole, 3 phase, 60 Hz, 230 / 460 volt.
- ▶ IP55 protection class.
- ▶ Class "F" insulation.

Maximum inlet pressure

These values are shown in the next table. The inlet pressure plus the pressure of the pump with closed valve must be lesser than the maximum working pressure.

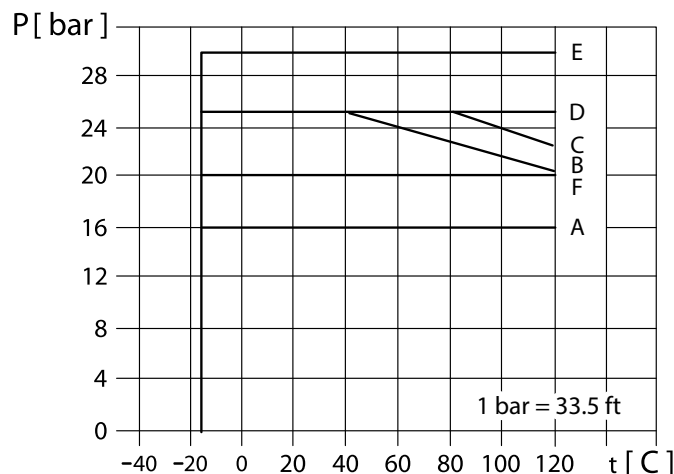


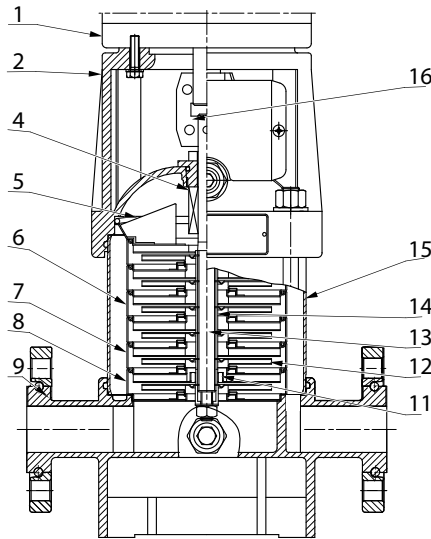
Table 2: Maximum pressure.

Model	Max. inlet pressure (bar)	Max. working pressure (curve)	Model	Max. inlet pressure (bar)	Max. working pressure (curve)
BMV1			BMV20		
90-103	22	B	10-303	20	C
110-153	22	B	20-503	20	C
130-153	22	B	30-753	20	C
170-203	22	B	40-1003	20	C
210-303	22	B	50-1503	20	C
230-303	22	B	60-1503	20	C
BMV2			BMV32		
60-153	23.5	B	70-2003	20	C
70-203	23.5	B	80-2003	20	C
110-303	23.5	B	100-2503	20	C
150-403	23.5	B	BMV32		
180-503	23.5	B	22-753	25	A
BMV3			32-1003	25	A
80-153	23	B	42-1503	25	A
110-203	23	B	52-2003	25	A
150-303	23	B	60-2503	25	D
170-303	23	B	82-3003	25	D
190-403	23	B	92-4003	25	D
230-403	23	B	90-4003	25	E
250-503	23	B	BMV42		
BMV4			10-1503	26	A
60-303	21	B	20-2003	26	A
80-403	21	B	30-2503	26	A
100-503	21	B	42-3003	26	D
120-503	21	B	40-4003	26	D
160-753	21	B	50-4003	26	D
BMV8			60-5003	26	D
50-403	20	C	BMV65		
60-503	20	C	11-1003	18	A
80-753	20	C	10-1503	18	A
100-1003	20	C	20-3003	18	A
120-1003	20	C	30-4003	18	A
140-1503	20	C	42-5003	18	D
BMV12			52-6003	18	D
20-303	25	C	BMV85		
30-503	25	C	10-2003	15	A
40-753	25	C	20-4003	15	A
50-753	25	C	30-6003	15	A
60-1003	25	C	42-6003	15	D
70-1003	25	C	BMV120		
80-1503	25	C	10-2503	15	F
90-1503	25	C	20-5003	15	F
100-1503	25	C	30-7503	15	F
110-2003	25	C	52-10003	15	F
120-2003	25	C	BMV150		
130-2003	25	C	10-3003	14	F
140-2003	25	C	22-4003	14	F
BMV16			32-7503	14	F
30-753	20	C	30-10003	14	F
40-1003	20	C	42-10003	14	F
60-1503	20	C			
80-2003	20	C			
100-2503	20	C			

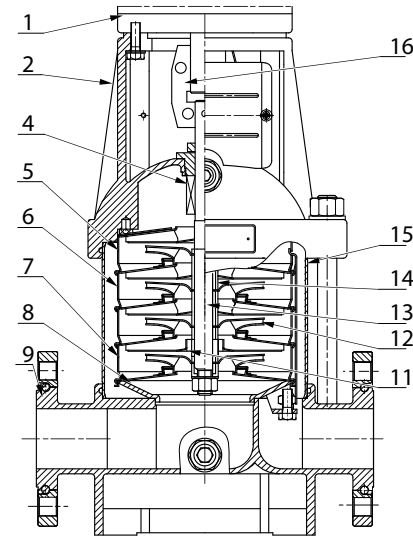
Notes

When the pump operates under ambient temperature higher than 104 °F (40 °C) or under altitude higher than 3280 ft, because of low air density and poor cooling effects, the motor output power will be decreased to certain extent. If the pump is operated under the above stated conditions, it should be equipped with motor of higher power.

BMV1, BMV2, BMV3, BMV4



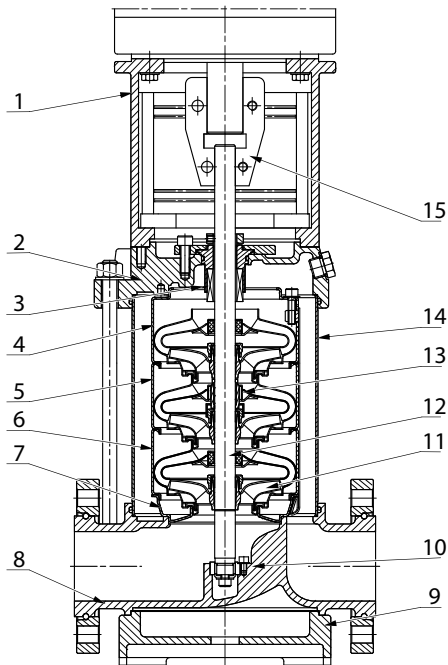
BMV8, BMV12, BMV16, BMV20



barmesapumps.com

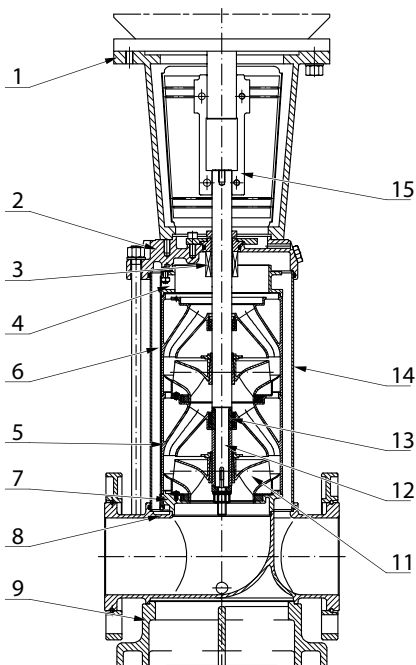
Item	Name	Material	AISI/ASTM
1	Motor		
2	Pump Head	Cast iron	ASTM25B
4	Mechanical seal	Carbon / Tungsten carbide / Viton / SS304	
5	Top diffuser	Stainless steel	AISI304
6	Diffuser	Stainless steel	AISI304
7	Support diffuser	Stainless steel	AISI304
8	Inducer	Stainless steel	AISI304
9	Inlet and outlet chamber	Cast iron	ASTM25B
11	Bearing	Tungsten carbide	
12	Impeller	Stainless steel	AISI304
13	Shaft	Stainless steel	AISI304 AISI316L
14	Impeller sleeve	Stainless steel	AISI304
15	Cylinder	Stainless steel	AISI304
16	Coupling	Carbon steel	

BMV32, BMV42, BMV65, BMV85



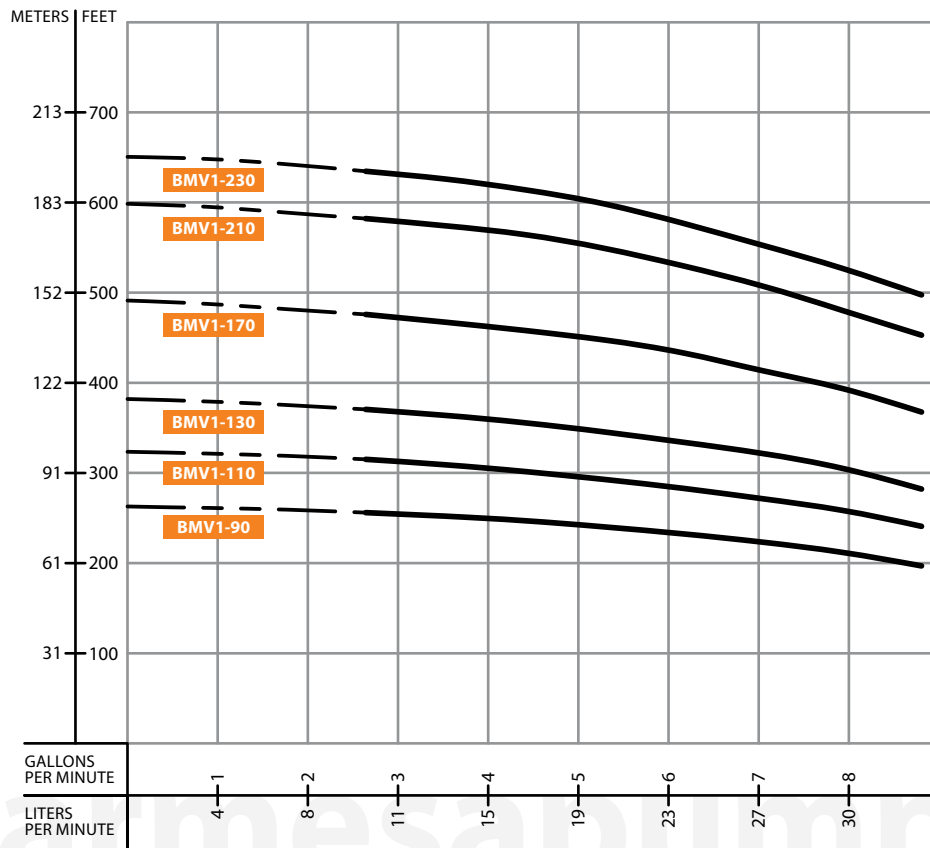
Item	Name	Material	AISI/ASTM
1	Bracket	Cast iron	ASTM25B
2	Pump head	Cast iron	ASTM25B
3	Mechanical seal	Carbon / Tungsten carbide / Viton / SS304	
4	Top diffuser	Stainless steel	AISI304
5	Support diffuser	Stainless steel	AISI304
6	Diffuser	Stainless steel	AISI304
7	Inducer	Stainless steel	AISI304
8	Inlet and outlet chamber	Cast iron	ASTM25B
9	Base plate	Cast iron	ASTM25B
10	Bottom bearing	Tungsten carbide	
11	Impeller	Stainless steel	AISI304
12	Shaft	Stainless steel	AISI304 AISI316L ANSI 431
13	Intermediate bearing	Tungsten carbide	
14	Cylinder	Stainless steel	AISI304
15	Coupling	Carbon steel	
	Rubber parts	NBR	

BMV120, BMV150

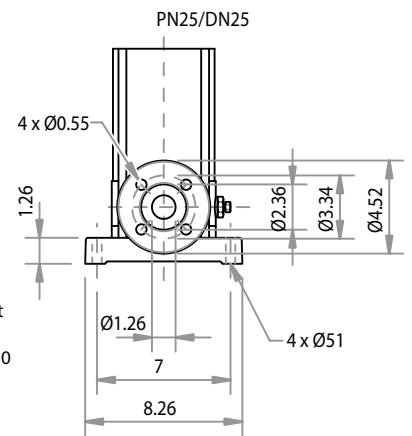
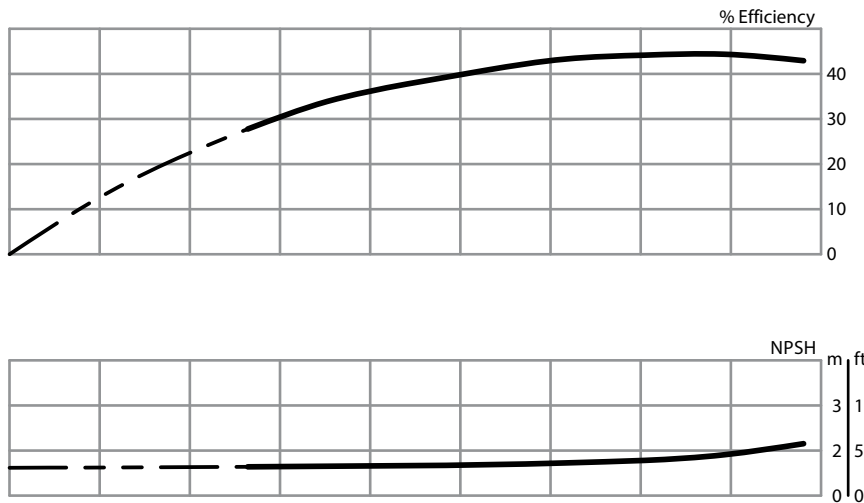
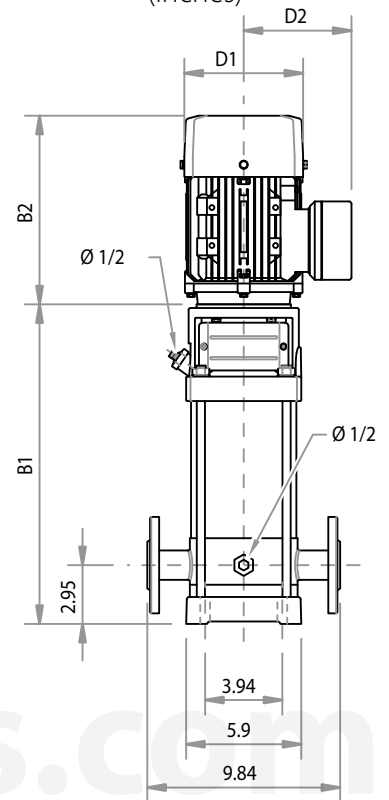


Item	Name	Material	AISI/ASTM
1	Bracket	Cast iron	ASTM25B
2	Pump head	Cast iron	ASTM 80-55-06
3	Mechanical seal	Carbon / Tungsten carbide / Viton / SS304	
4	Discharge	Stainless steel	AISI304
5	Support diffuser	Stainless steel	AISI304
6	Diffuser	Stainless steel	AISI304
7	Inducer	Stainless steel	AISI304
8	Inlet and outlet chamber	Cast iron	ASTM 80-55-06
9	Base plate	Cast iron	ASTM 80-55-06
11	Impeller	Stainless steel	AISI304
12	Shaft	Stainless steel	AISI304
13	Bearing	Tungsten carbide	
14	Cylinder	Stainless steel	AISI304
15	Coupling	Carbon steel	
	Rubber parts	NBR	

Curve BMV1



Installation Diagram (inches)



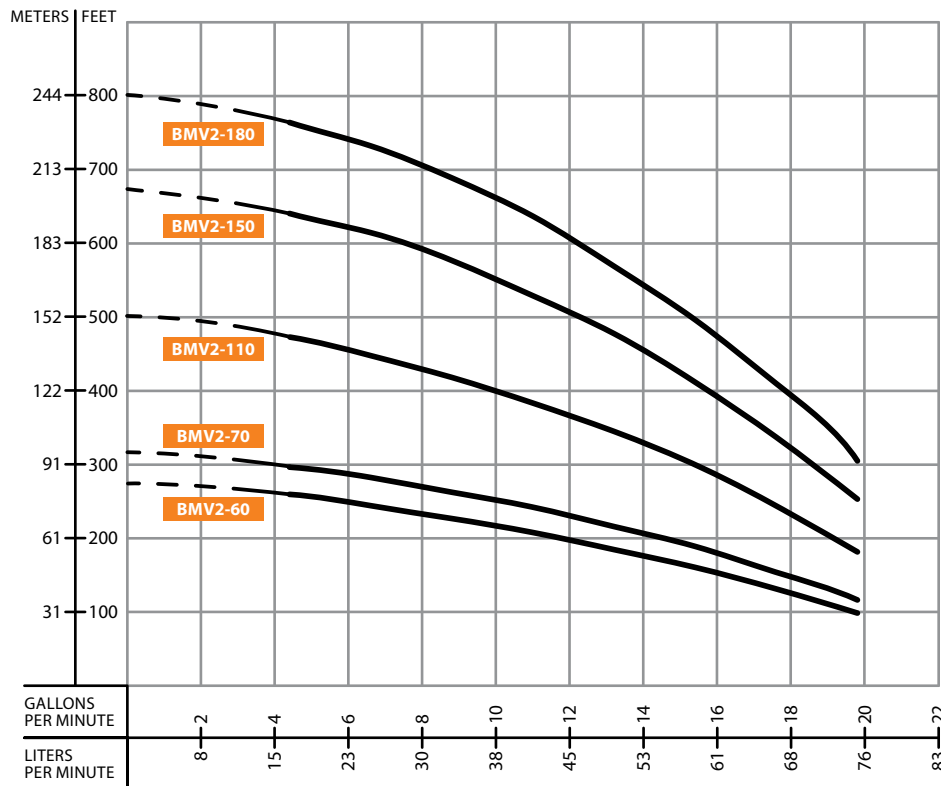
Performance table

MODEL	STAGES	HP	Q (GPM)	2.6	3.5	4.4	5.3	6.2	7	7.9	8.8
BMV1-90-103	9	1	H (ft)	249.3	246.1	242.8	239.5	232.9	216.5	210.0	196.9
BMV1-110-153	11	1.5		311.7	305.1	295.3	285.4	278.9	265.7	255.9	239.5
BMV1-130-153	13	1.5		367.5	360.9	351.0	344.5	328.1	311.7	305.1	282.2
BMV1-170-203	17	2		472.4	462.6	456.0	449.5	433.1	406.8	393.7	367.5
BMV1-210-303	21	3		580.7	570.9	564.3	551.2	531.5	502.0	482.3	452.8
BMV1-230-303	23	3		633.2	623.4	616.8	603.7	570.9	547.9	528.2	498.7

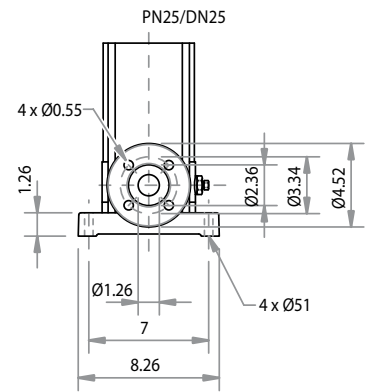
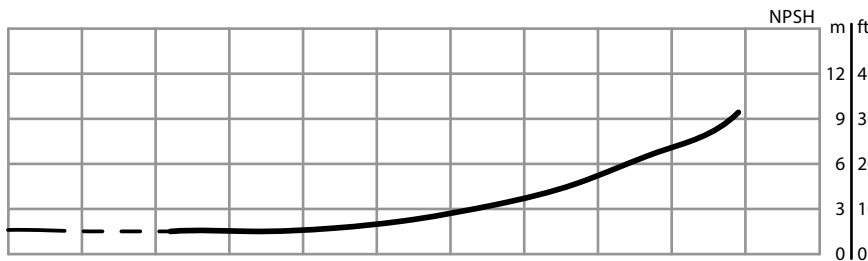
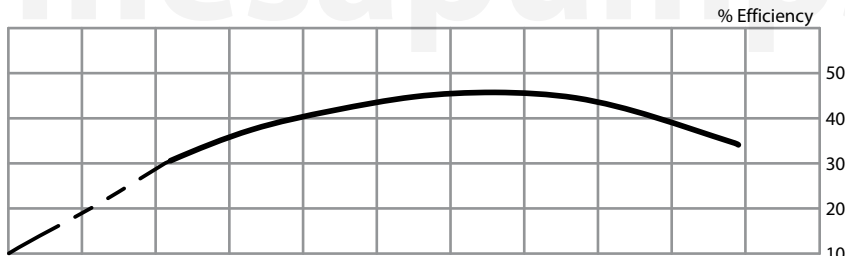
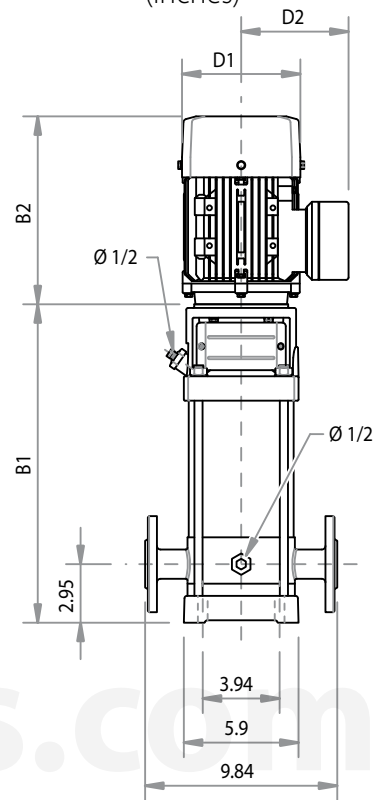
Size and weight

B1	B2	Size (inches)				Weight (lb)
		B1+B2	D1	D2		
15.5	9.6	25.2	6.7	5.6	61.7	
16.9	9.6	26.6	6.7	5.6	63.9	
18.3	9.6	28.0	6.7	5.6	68.3	
21.6	11.4	33.0	7.5	6.1	83.8	
24.4	11.4	35.8	7.5	6.1	92.6	
25.8	11.4	37.2	7.5	6.1	94.8	

Curve BMV2



Installation Diagram (inches)



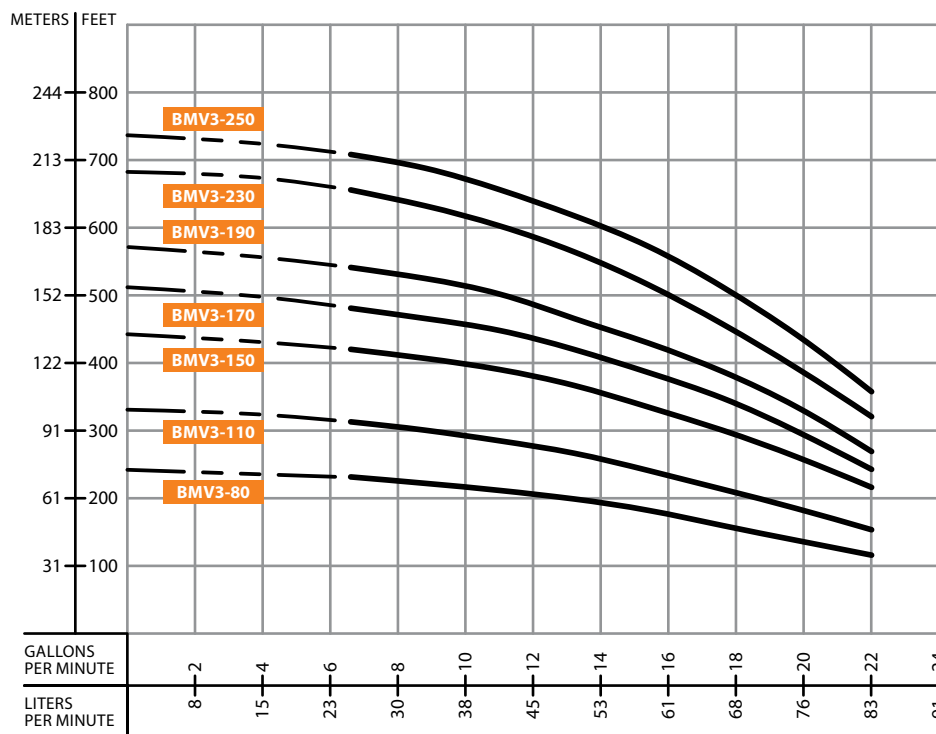
Performance table

MODEL	STAGES	HP	Q (GPM)	4.4	6.6	8.8	11	13.2	15.4	17.6	19.8
BMV2-60-153	6	1.5	H (ft)	255.9	242.8	226.4	206.7	183.7	160.8	131.2	98.4
BMV2-70-203	7	2		298.6	282.2	265.7	242.8	216.5	187.0	154.2	114.8
BMV2-110-303	11	3		469.2	446.2	419.9	380.6	341.2	295.3	246.1	183.7
BMV2-150-403	15	4		639.8	610.2	577.4	524.9	465.9	410.1	337.9	252.6
BMV2-180-503	18	5.5		767.7	748.0	695.5	639.8	561.0	495.4	413.4	308.4

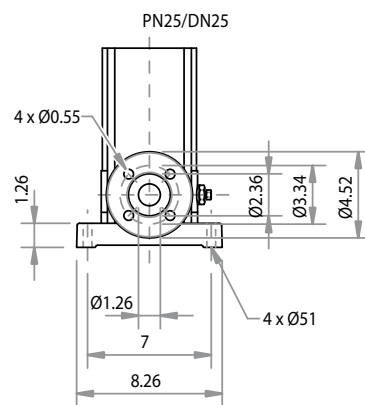
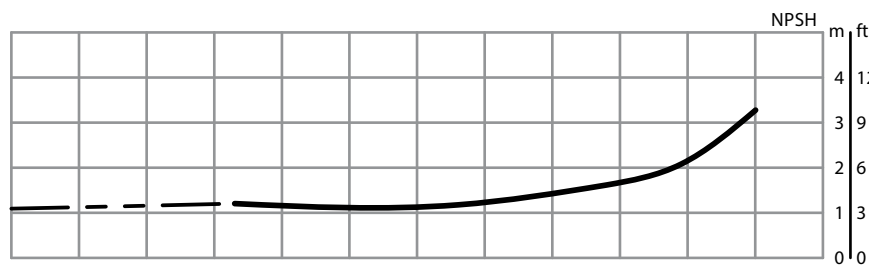
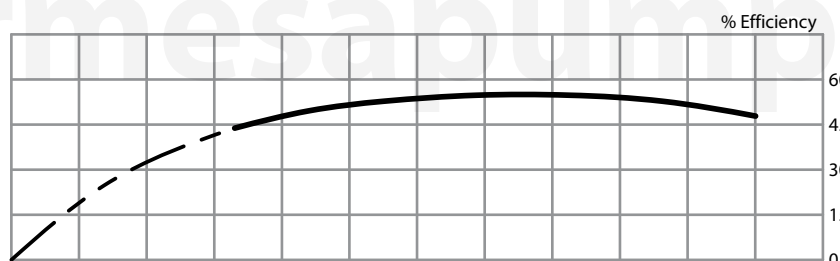
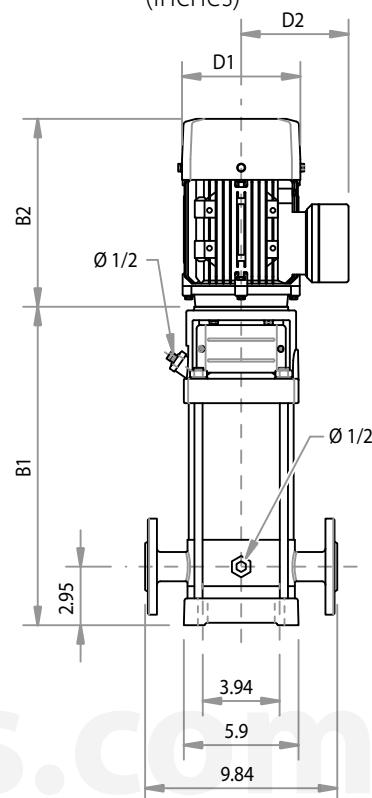
Size and weight

Size (inches)					Weight (lb)
B1	B2	B1+B2	D1	D2	
13.4	9.6	23.0	6.7	5.6	57.3
14.5	11.4	25.9	7.5	6.1	70.5
17.3	11.4	28.7	7.5	6.1	81.6
20.6	12.4	33.0	7.8	6.5	99.2
22.7	13.2	35.9	9.1	7.4	119.0

Curve BMV3



Installation Diagram (inches)



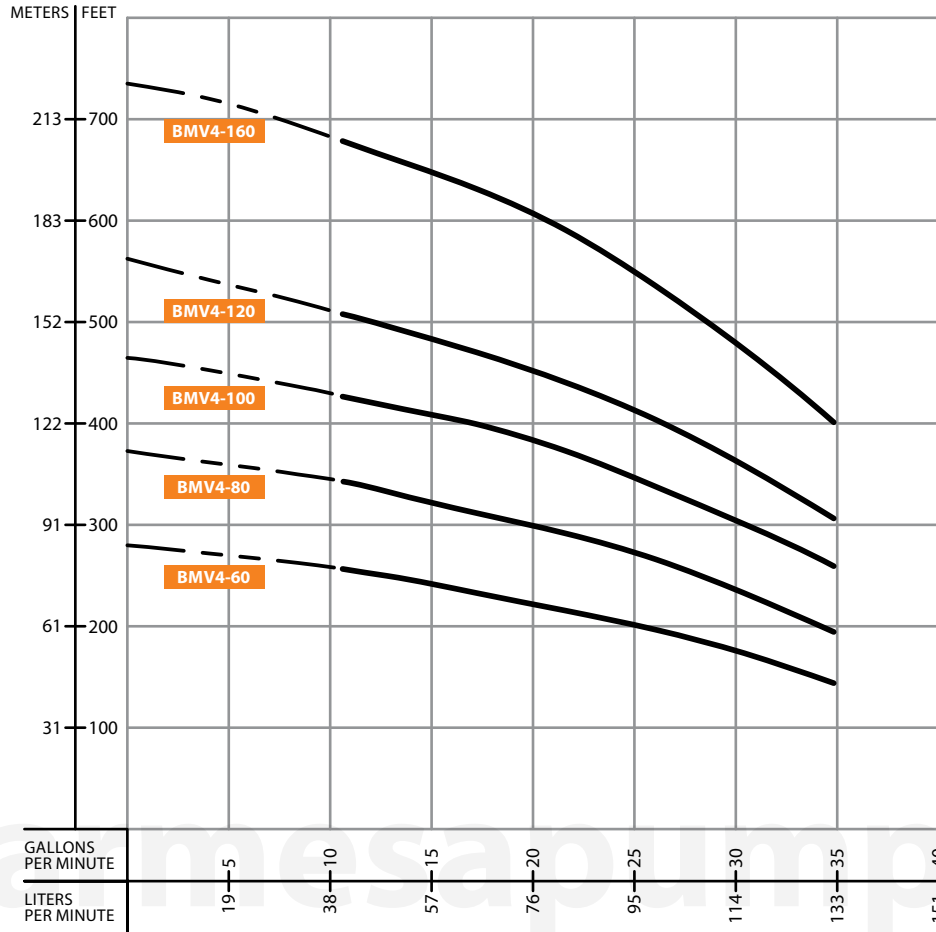
Performance table

MODEL	STAGES	HP	Q (GPM)	H (ft)							
				6.6	8.8	11	13.2	15.4	17.6	19.8	22
BMV3-80-153	8	1.5		229.7	219.8	210.0	200.1	173.9	160.8	144.4	114.8
BMV3-110-203	11	2		315.0	301.8	285.4	269.0	242.8	226.4	193.6	157.5
BMV3-150-303	15	3		423.2	413.4	393.7	367.5	324.8	305.1	265.7	213.3
BMV3-170-303	17	3		482.3	469.2	449.5	419.9	374.0	347.8	298.6	242.8
BMV3-190-403	19	4		541.3	524.9	502.0	465.9	403.5	387.1	334.6	269.0
BMV3-230-403	23	4		656.2	636.5	607.0	570.9	505.2	465.9	400.3	321.5
BMV3-250-503	25	5.5		711.9	692.3	662.7	613.5	547.9	505.2	439.6	354.3

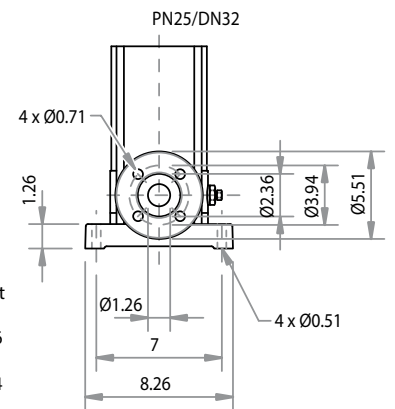
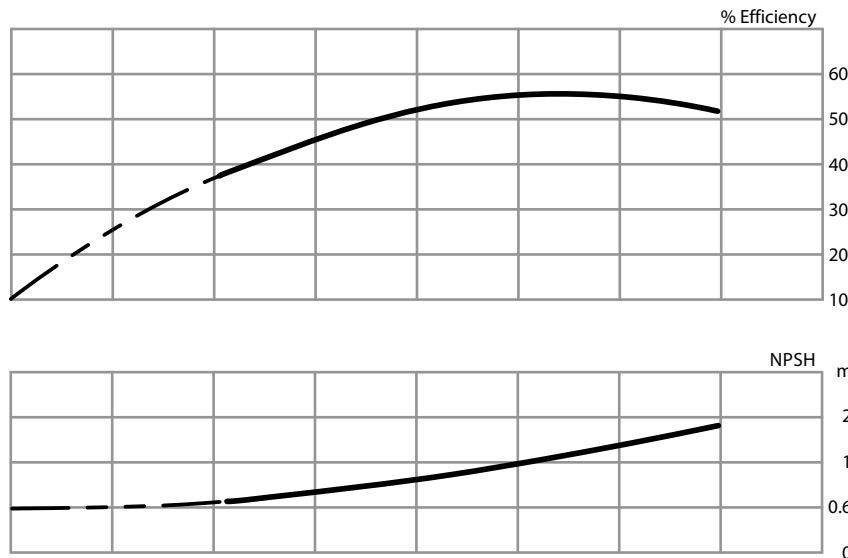
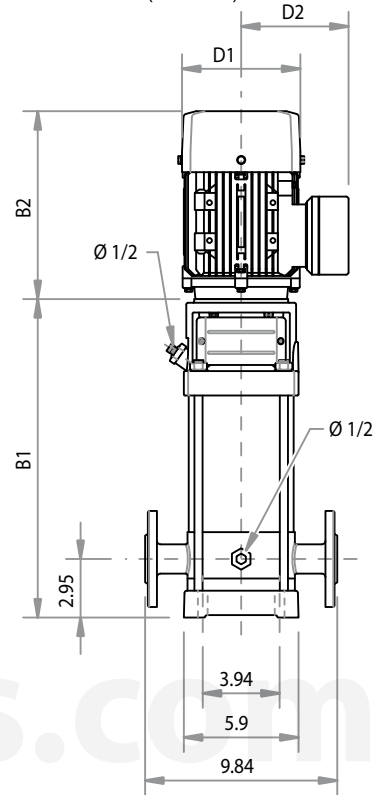
Size and weight

Size (inches)						Weight (lb)
B1	B2	B1+B2	D1	D2		
14.8	9.6	24.4	6.7	5.6	59.5	
17.3	11.4	28.7	7.5	6.1	75.0	
20.2	11.4	31.6	7.5	6.1	86.0	
21.6	11.4	33.0	7.5	6.1	88.2	
23.4	12.4	35.8	7.8	6.5	105.8	
26.2	12.4	38.6	7.8	6.5	110.2	
27.6	13.2	40.8	9.1	7.4	127.9	

Curve BMV4



Installation Diagram (inches)



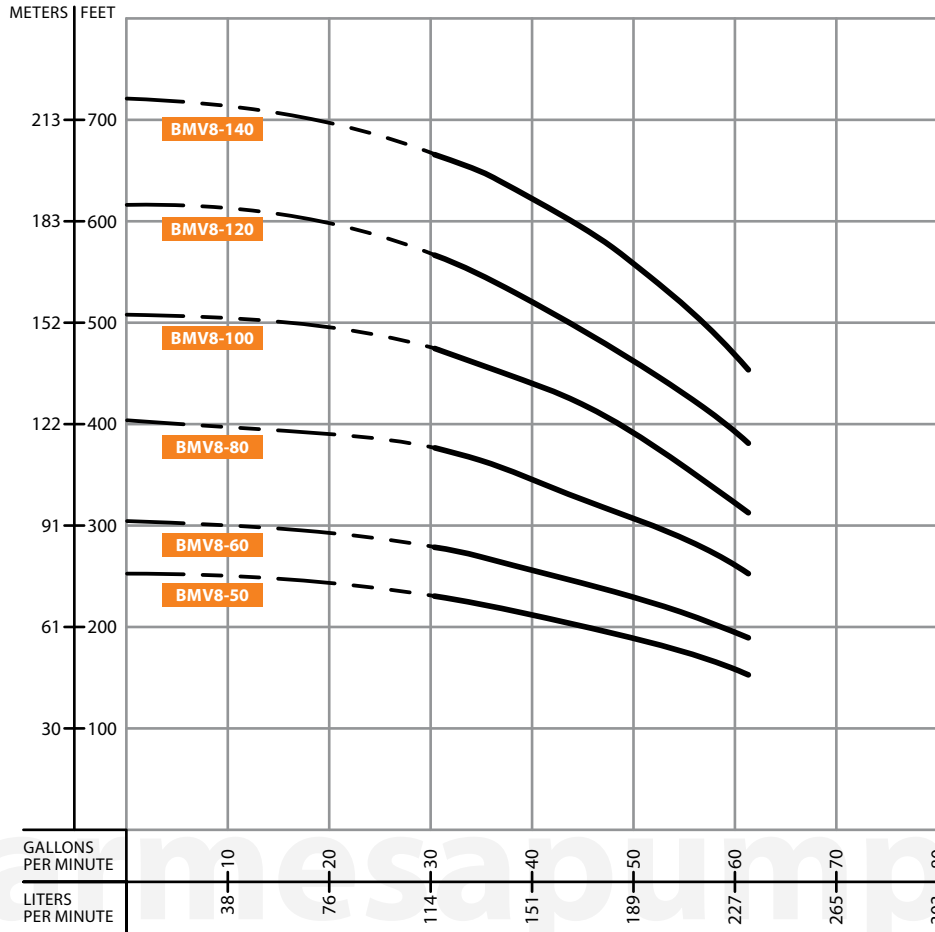
Performance table

MODEL	STAGES	HP	Q (GPM)	11	13.2	17.6	22	26.4	30.8	35.2
BMV4-60-303	6	3	H (ft)	255.9	246.1	236.2	219.8	193.6	177.2	154.2
BMV4-80-403	8	4		341.2	328.1	311.7	295.3	259.2	236.2	206.7
BMV4-100-503	10	5.5		426.5	410.1	393.7	370.7	334.6	295.3	262.5
BMV4-120-503	12	5.5		511.8	492.1	475.7	446.2	400.3	357.6	315.0
BMV4-160-753	16	7.5		679.1	659.4	643.0	600.4	541.3	479.0	419.9

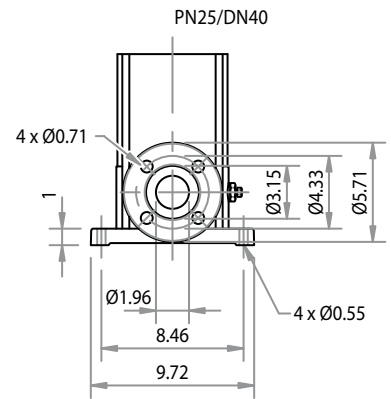
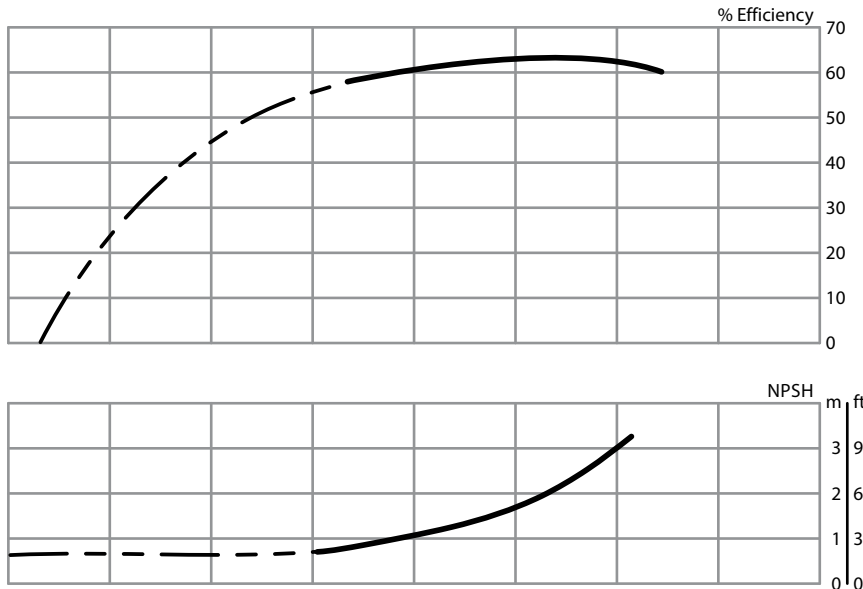
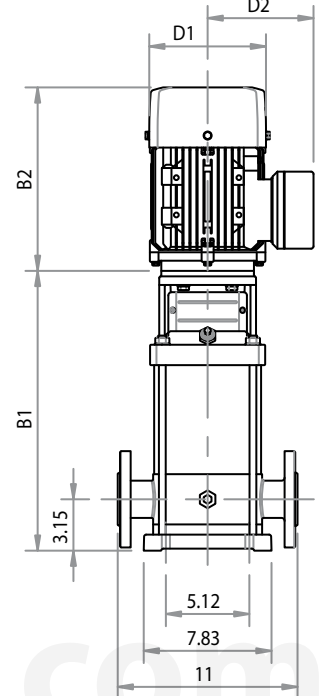
Size and weight

Size (inches)					Weight (lb)
B1	B2	B1+B2	D1	D2	
15.9	11.4	27.3	7.5	6.1	77.2
18.4	13.6	32.0	7.8	6.5	92.6
20.6	13.2	33.7	9.1	7.4	112.4
22.7	13.2	35.9	9.1	7.4	114.6
27.7	16.9	44.6	10.2	8.2	145.5

Curve BMV8



Installation Diagram (inches)



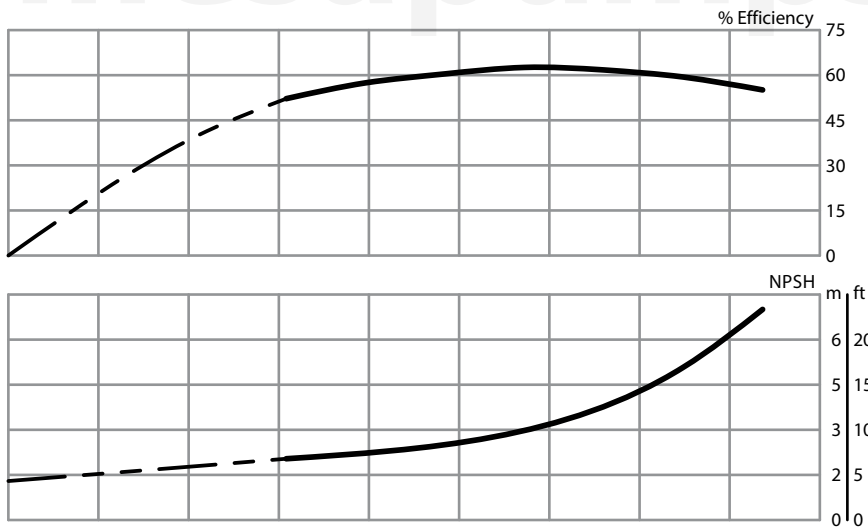
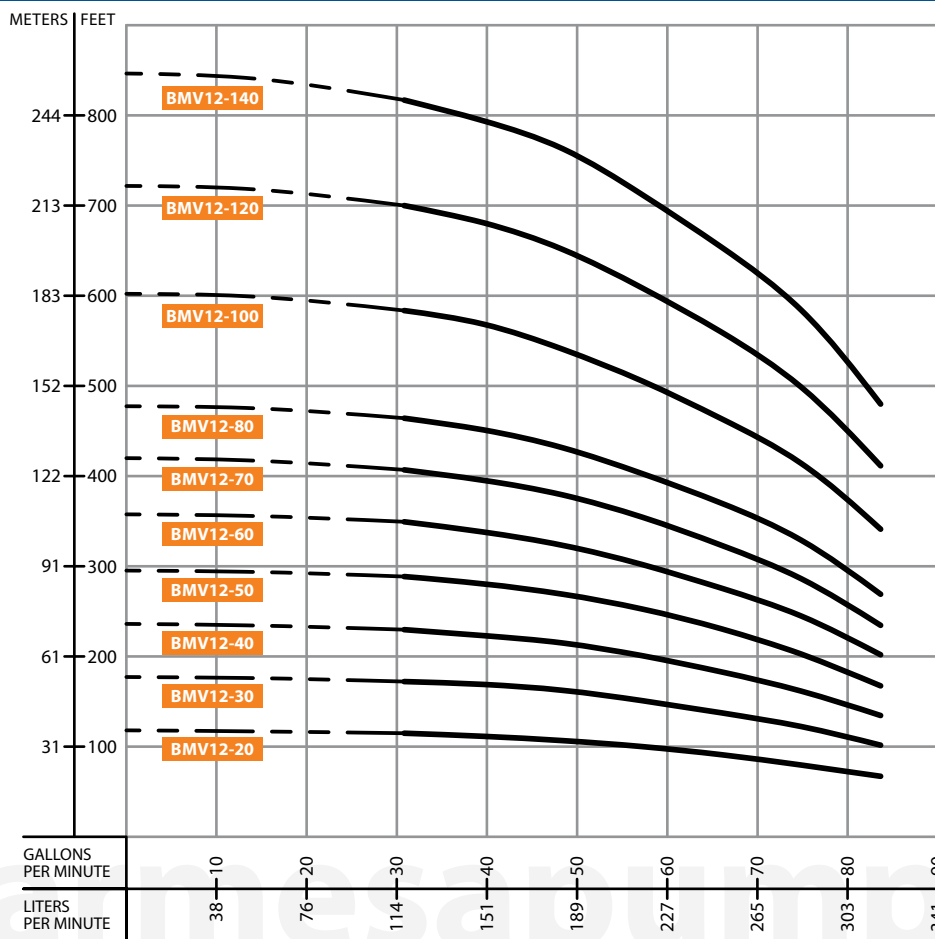
Performance table

MODEL	STAGES	HP	Q (GPM)	30.8	35.2	39.6	44	48.4	52.8	57.2	61.6
BMV8-50-403	5	4	H (ft)	229.7	223.1	213.3	206.7	193.6	183.7	170.6	154.2
BMV8-60-503	6	5.5		278.9	269.0	255.9	249.3	236.2	223.1	203.4	187.0
BMV8-80-753	8	7.5		377.3	360.9	344.5	331.4	318.2	298.6	275.6	246.1
BMV8-100-1003	10	10		475.7	459.3	433.1	413.4	400.3	377.3	344.5	311.7
BMV8-120-1003	12	10		567.6	547.9	524.9	498.7	482.3	433.1	410.1	377.3
BMV8-140-1503	14	15		662.7	639.8	616.8	587.3	570.9	534.8	482.3	442.9

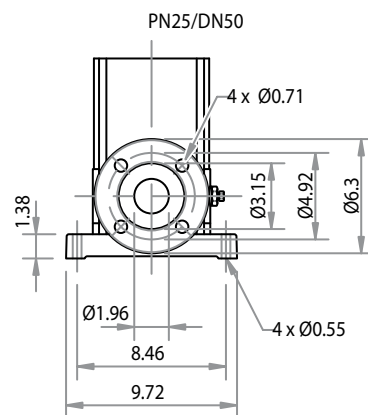
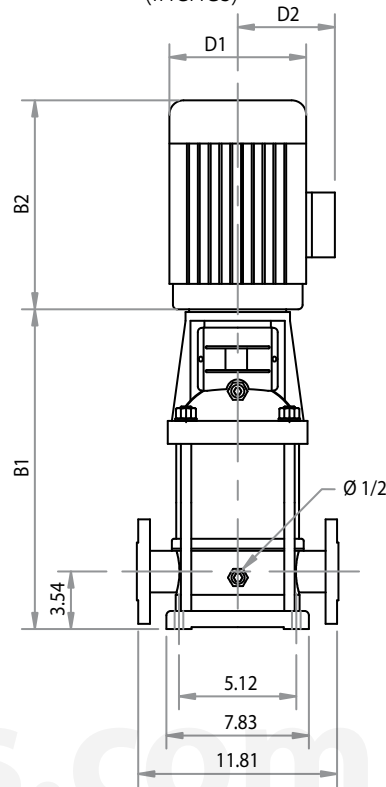
Size and weight

Size (inches)						Weight (lb)
B1	B2	B1+B2	D1	D2		
18.0	12.4	30.4	7.8	6.5	110.2	
19.2	13.2	32.4	9.1	7.4	127.9	
22.3	16.9	39.3	10.2	8.2	156.5	
24.7	16.9	41.6	10.2	8.2	176.4	
27.0	16.9	44.0	10.2	8.2	180.8	
32.9	19.3	52.2	13.0	10.0	337.3	

Curve BMV12



Installation Diagram (inches)



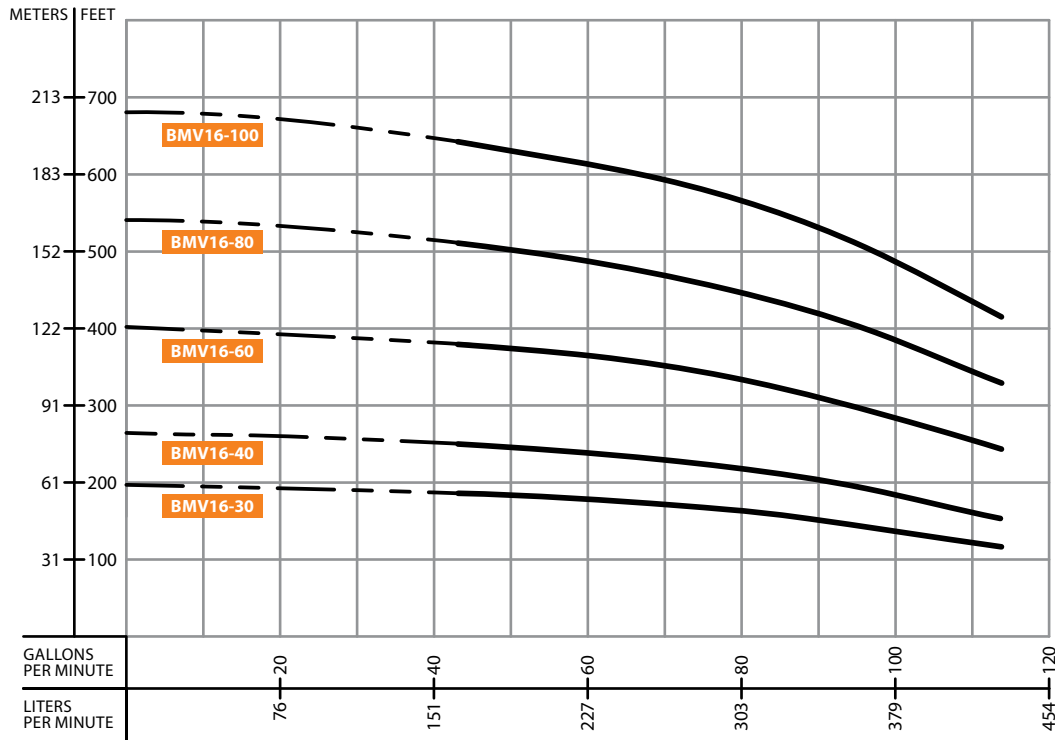
Performance table

MODEL	STAGES	HP	Q (GPM)	H (ft)													
				30.8	39.6	48.4	52.8	57.2	66	74.8	83.7						
BMV12-20-303	2	3		114.8	111.5	106.6	105.0	100.1	88.6	80.4	67.3						
BMV12-30-503	3	5.5		172.2	169.0	164.0	157.5	150.9	136.2	123.0	101.7						
BMV12-40-753	4	7.5		229.7	223.1	214.9	210.0	201.8	180.4	162.4	134.5						
BMV12-50-753	5	7.5		288.7	282.2	269.0	262.5	252.6	229.7	203.4	167.3						
BMV12-60-1003	6	10		351.0	337.9	324.8	315.0	301.8	275.6	246.1	200.1						
BMV12-70-1003	7	10		406.8	397.0	380.6	367.5	351.0	318.2	288.7	232.9						
BMV12-80-1503	8	15		462.6	449.5	433.1	419.9	400.3	364.2	331.4	269.0						
BMV12-90-1503	9	15		-	-	-	-	-	-	-	-						
BMV12-100-1503	10	15		584.0	567.6	544.6	528.2	502.0	459.3	419.9	341.2						
BMV12-110-2003	11	20		-	-	-	-	-	-	-	-						
BMV12-120-2003	12	20		698.8	682.4	652.9	633.2	607.0	551.2	505.2	410.1						
BMV12-130-2003	13	30		-	-	-	-	-	-	-	-						
BMV12-140-2003	14	20		816.9	794.0	764.4	738.2	708.7	649.6	590.6	475.7						

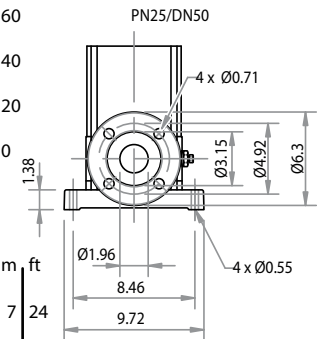
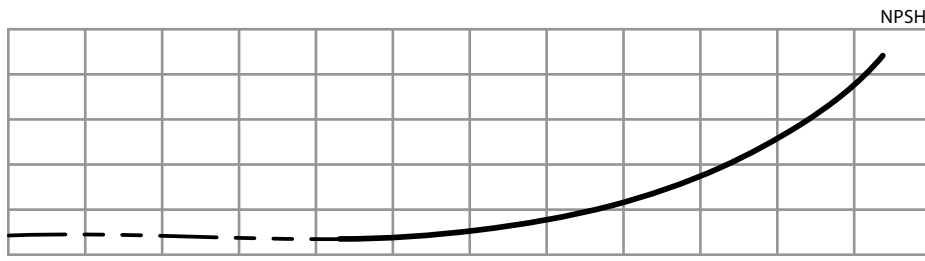
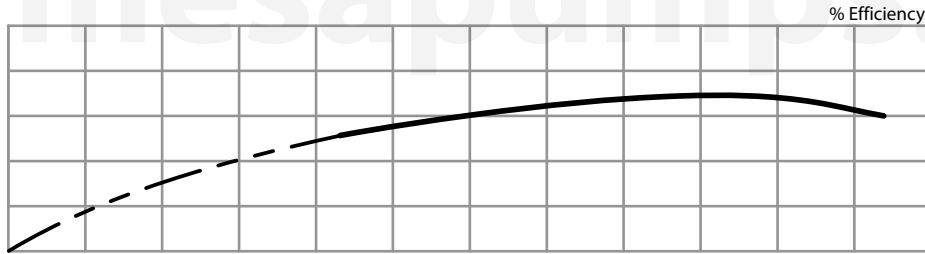
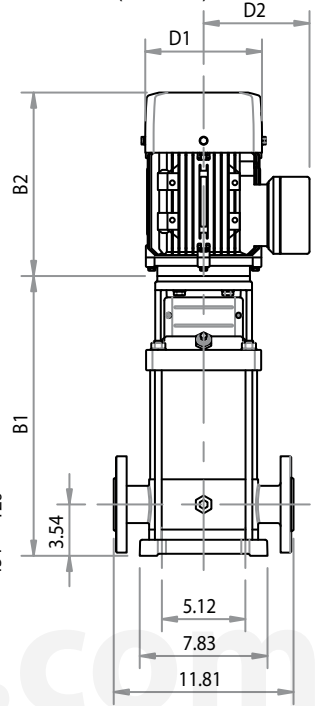
Size and weight

Size (inches)						Weight (lb)
B1	B2	B1+B2	D1	D2		
14.4	11.4	25.9	7.5	6.1	90.4	
16.0	13.2	29.2	9.1	7.4	123.5	
18.0	16.9	34.9	10.2	8.2	152.1	
19.2	16.9	36.1	10.2	8.2	156.5	
20.4	16.9	37.3	10.2	8.2	169.8	
21.5	16.9	38.5	10.2	8.2	172.0	
26.2	19.3	45.5	13.0	10.0	324.1	
-	-	-	-	-	-	
28.5	19.3	47.8	13.0	10.0	332.9	
-	-	-	-	-	-	
30.9	19.3	50.2	13.0	10.0	361.6	
-	-	-	-	-	-	
33.3	19.3	52.6	13.0	10.0	368.2	

Curve BMV16



Installation Diagram (inches)



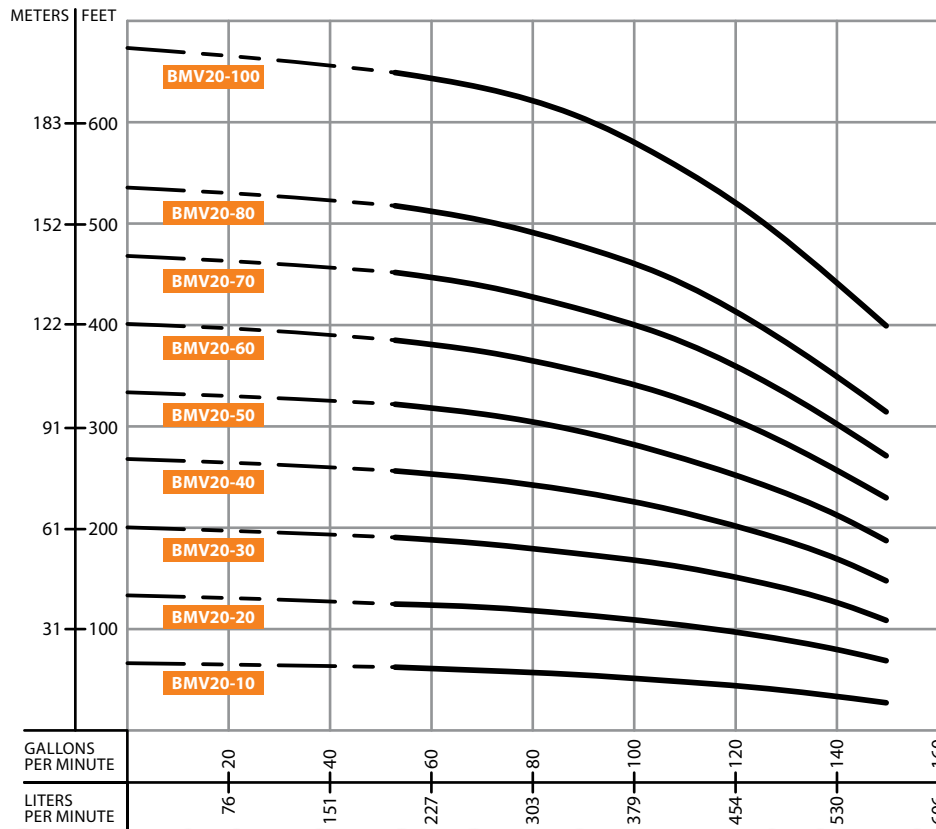
Performance table

MODEL	STAGES	HP	Q (GPM)	44	52.8	61.6	70.4	79.3	88.1	96.9	105.7	114.5
BMV16-30-753	3	7.5	H (ft)	187.0	183.7	180.4	177.2	167.3	157.5	147.6	131.2	118.1
BMV16-40-1003	4	10		249.3	246.1	239.5	236.2	223.1	210.0	196.9	177.2	160.8
BMV16-60-1503	6	15		377.3	370.7	364.2	354.3	334.6	315.0	298.6	269.0	246.1
BMV16-80-2003	8	20		508.5	498.7	485.6	472.4	449.5	426.5	400.3	364.2	331.4
BMV16-100-2503	10	25		646.3	629.9	613.5	593.8	570.9	541.3	502.0	456.0	416.7

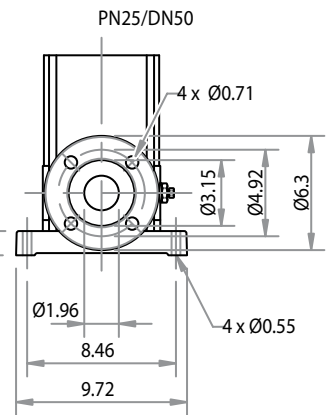
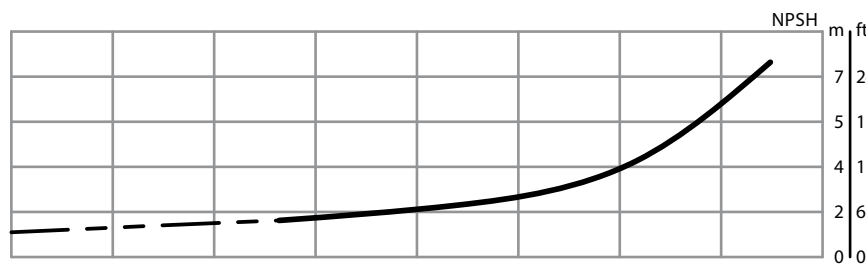
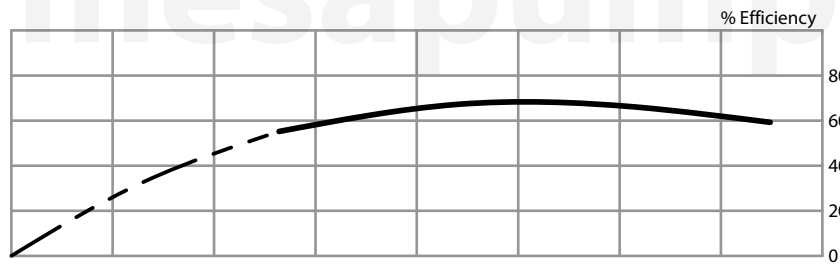
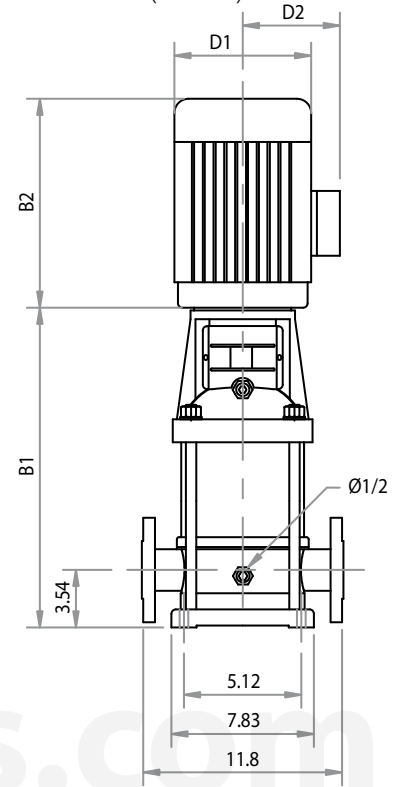
Size and weight

Size (inches)					Weight (lb)
B1	B2	B1+B2	D1	D2	
18.6	16.9	35.5	10.2	8.2	149.9
20.4	16.9	37.3	10.2	8.2	165.3
27.4	19.3	46.7	13.0	10.0	330.7
30.9	19.3	50.2	13.0	10.0	359.4
34.4	21.7	56.1	13.0	10.0	410.1

Curve BMV20



Installation Diagram (inches)



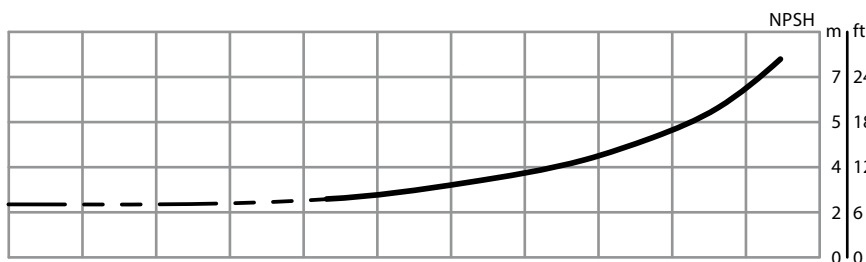
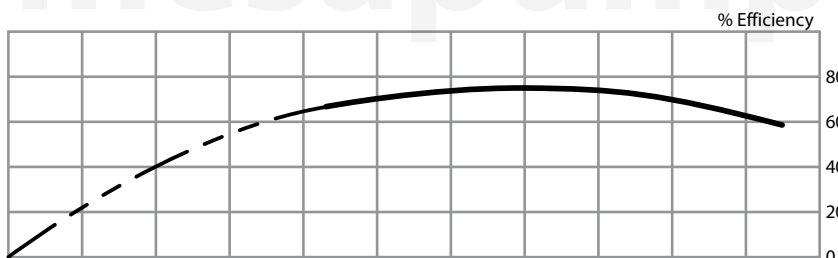
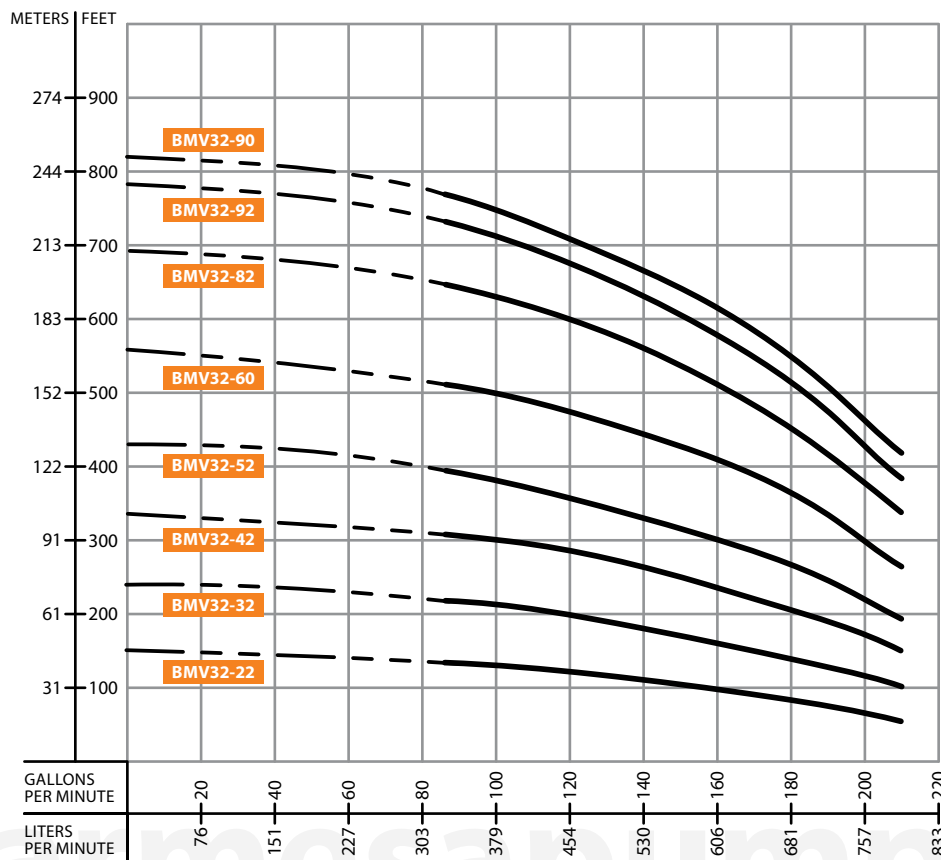
Performance table

MODEL	STAGES	HP	Q (GPM)	H (ft)						
				52.8	70.4	88.1	105.7	123.3	140.9	149.7
BMV20-10-303	1	3		62.3	59.1	55.8	49.2	42.7	32.8	27.9
BMV20-20-503	2	5.5		124.7	121.4	114.8	105.0	95.1	78.7	68.9
BMV20-30-753	3	7.5		190.3	183.7	173.9	164.0	147.6	124.7	108.3
BMV20-40-1003	4	10		255.9	246.1	236.2	219.8	196.9	167.3	147.6
BMV20-50-1503	5	15		321.5	308.4	295.3	278.9	246.1	210.0	187.0
BMV20-60-1503	6	15		387.1	370.7	354.3	334.6	298.6	252.6	229.7
BMV20-70-2003	7	20		452.8	436.4	416.7	390.4	351.0	298.6	272.3
BMV20-80-2003	8	20		518.4	502.0	479.0	449.5	403.5	344.5	315.0
BMV20-100-2503	10	25		649.6	633.2	607.0	564.3	508.5	436.4	400.3

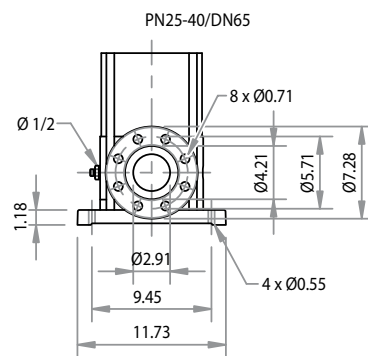
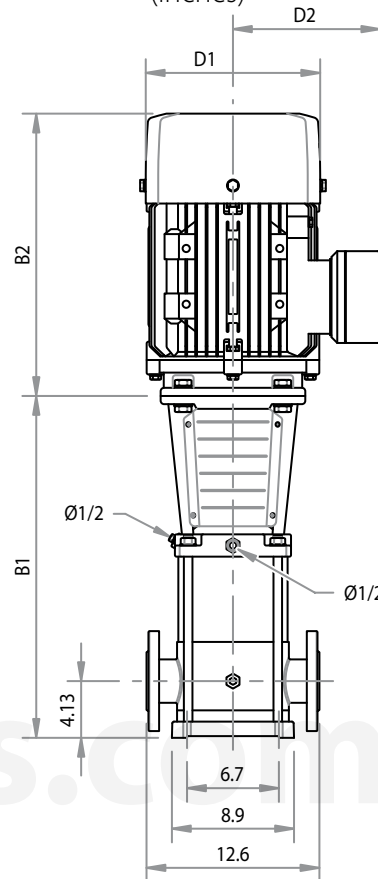
Size and weight

B1	B2	B1+B2	Size (inches)		Weight (lb)
			D1	D2	
15.6	11.4	27.0	7.5	6.1	90.4
16.0	13.2	29.2	9.1	7.4	123.5
18.6	16.9	35.5	10.2	8.2	152.1
20.4	16.9	37.3	10.2	8.2	174.2
25.6	19.3	44.9	13.0	10.0	326.3
27.4	19.3	46.7	13.0	10.0	330.7
29.1	19.3	48.4	13.0	10.0	357.1
30.9	19.3	50.2	13.0	10.0	359.4
34.4	21.7	56.1	13.0	10.0	412.3

Curve BMW32



Installation Diagram (inches)



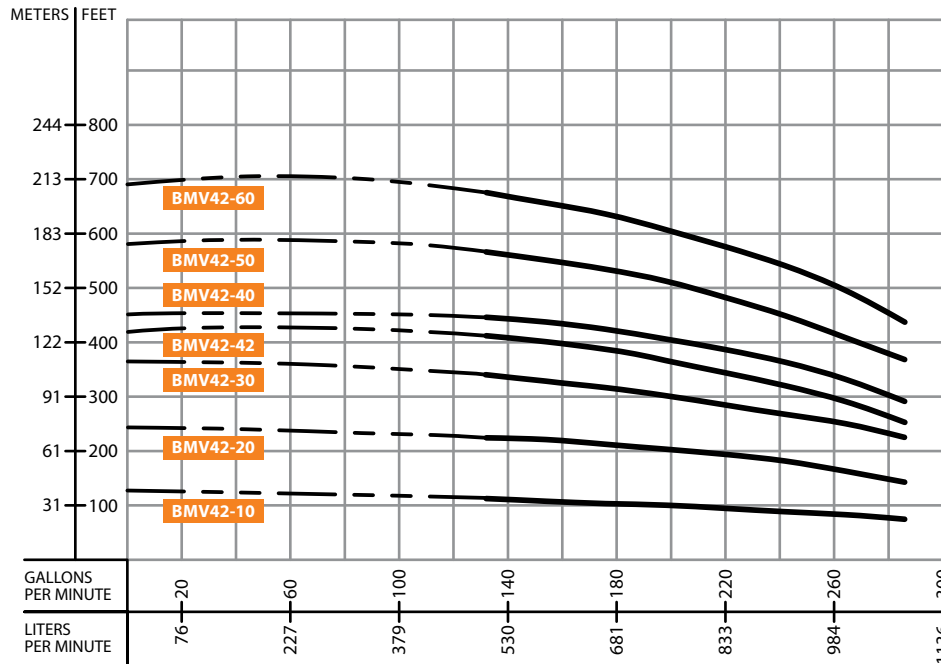
Performance table

MODEL	STAGES	HP	Q (GPM)	88.1	105.7	123.3	140.9	158.5	176.1	193.7	211.3
BMW32-22-753	2	7.5	H (ft)	134.5	131.2	124.7	114.8	101.7	88.6	72.2	55.8
BMW32-32-1003	3	10		219.8	210.0	200.1	187.0	170.6	150.9	128.0	101.7
BMW32-42-1503	4	15		308.4	298.6	285.4	265.7	239.5	213.3	183.7	147.6
BMW32-52-2003	5	20		390.4	377.3	357.6	334.6	308.4	275.6	239.5	193.6
BMW32-60-2503	6	25		508.5	492.1	472.4	446.2	413.4	374.0	328.1	265.7
BMW32-82-3003	8	30		643.0	623.4	597.1	564.3	521.7	469.2	406.8	334.6
BMW32-92-4003	9	40		731.6	708.7	675.9	636.5	587.3	531.5	465.9	383.9
BMW32-90-4003	9	40		767.7	741.5	708.7	669.3	620.1	564.3	498.7	416.7

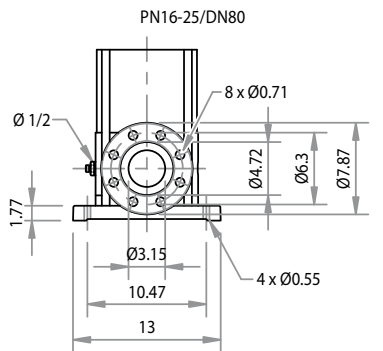
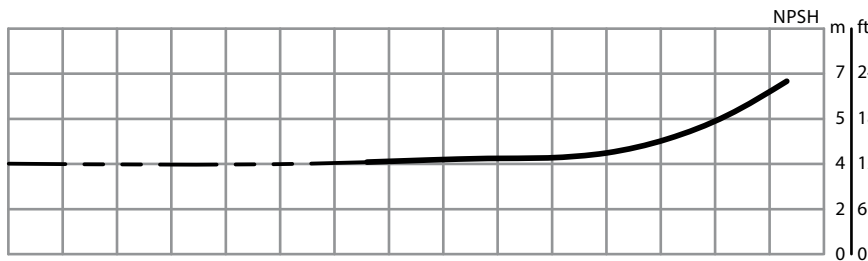
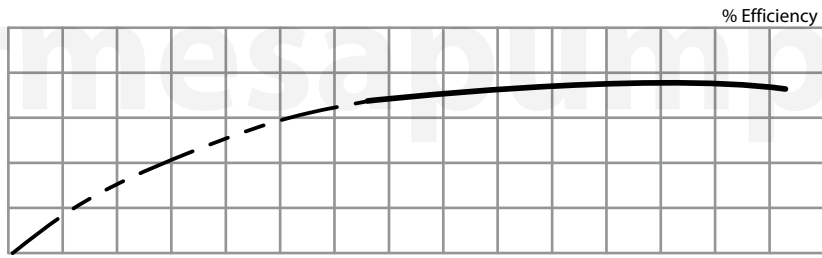
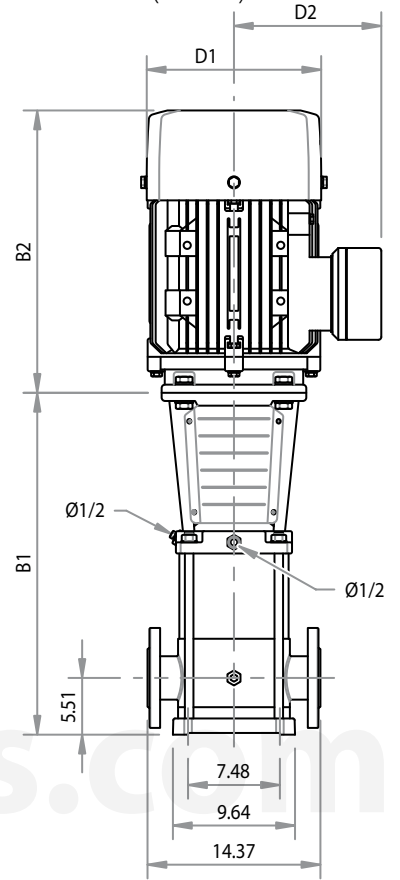
Size and weight

Size (inches)					Weight (lb)
B1	B2	B1+B2	D1	D2	
22.6	16.9	39.6	10.2	8.2	209.4
25.4	19.3	44.7	13.0	10.0	229.3
32.3	19.3	51.6	13.0	10.0	388.0
35.0	19.3	54.3	13.0	10.0	421.1
37.8	21.7	59.4	13.0	10.0	476.2
43.3	23.2	66.5	15.7	12.2	571.0
46.1	26.0	72.0	15.7	12.2	703.3
46.1	26.0	72.0	15.7	12.2	703.3

Curve BMV42



Installation Diagram (inches)



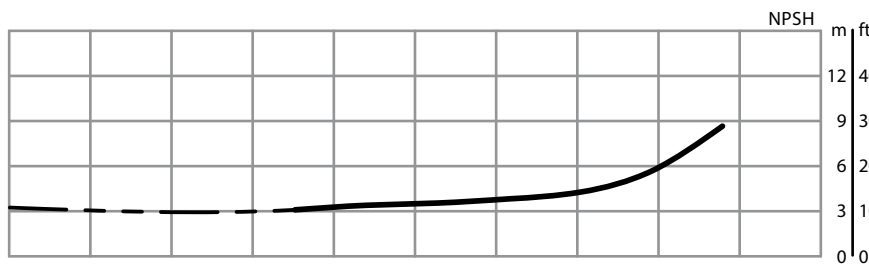
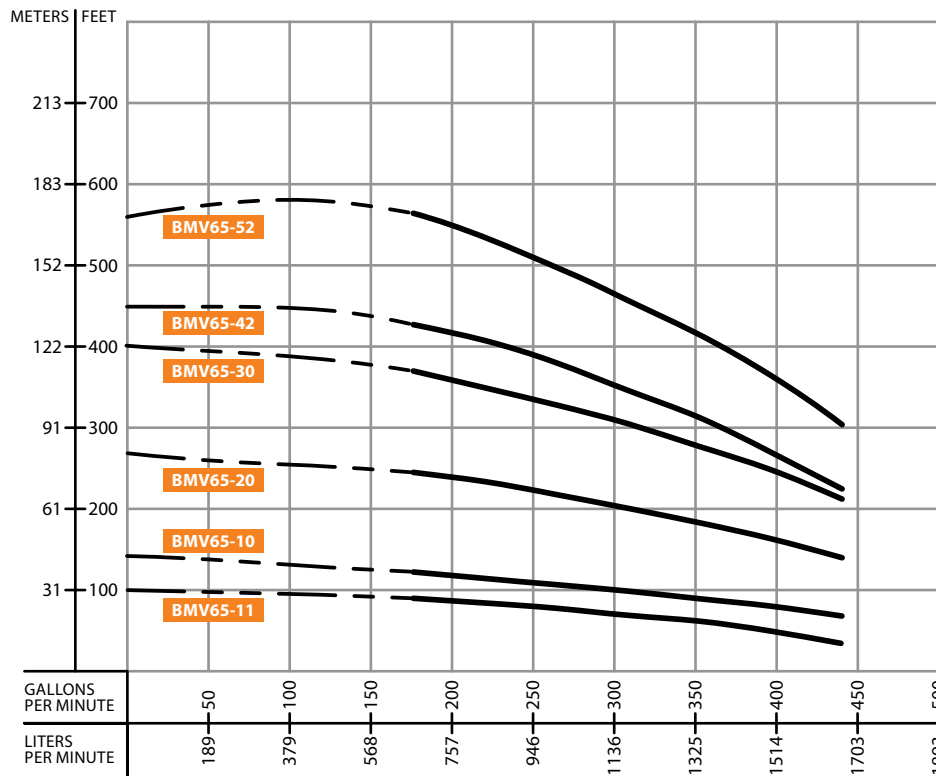
Performance table

MODEL	STAGES	HP	Q (GPM)	132.1	154.1	176.1	184.9	198.1	220.1	242.2	264.2	286.2
BMV42-10-1503	1	10	H (ft)	111.5	108.3	105.0	103.3	98.4	95.1	88.6	82.0	72.2
BMV42-20-2003	2	20		226.4	219.8	213.3	206.7	200.1	193.6	180.4	164.0	144.4
BMV42-30-2503	3	25		334.6	328.1	318.2	311.7	301.8	288.7	269.0	249.3	223.1
BMV42-42-3003	4	30		410.1	397.0	387.1	377.3	367.5	344.5	321.5	292.0	255.9
BMV42-40-4003	4	40		446.2	436.4	423.2	413.4	403.5	383.9	367.5	334.6	292.0
BMV42-50-4003	5	40		561.0	544.6	528.2	518.4	505.2	475.7	452.8	413.4	367.5
BMV42-60-5003	6	50		672.6	656.2	633.2	623.4	610.2	577.4	544.6	498.7	439.6

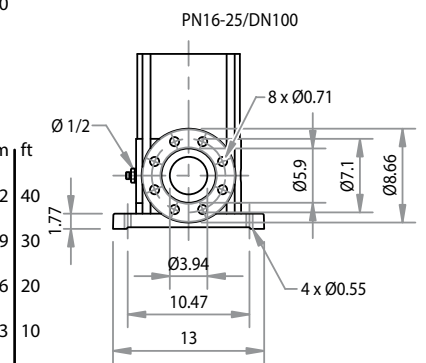
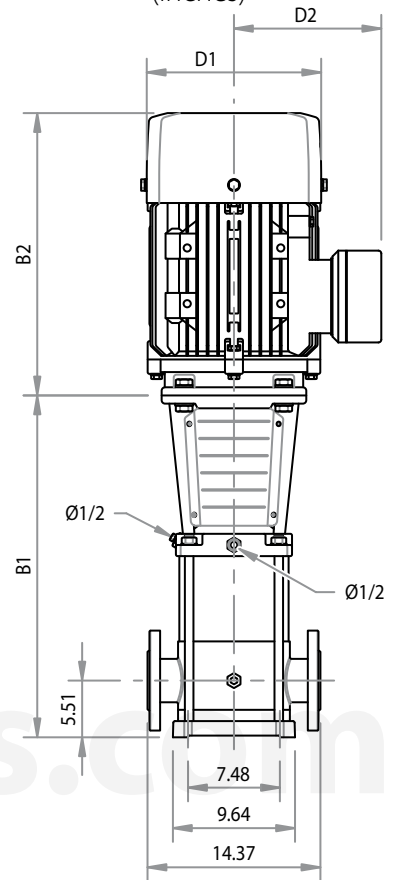
Size and weight

Size (inches)						Weight (lb)
B1	B2	B1+B2	D1	D2		
22.1	16.9	39.0	10.2	8.2	233.7	
29.4	19.3	48.7	13.0	10.0	414.5	
32.6	21.7	54.3	13.0	10.0	469.6	
35.7	23.2	59.0	14.2	11.2	557.8	
35.7	26.0	61.7	15.7	12.2	681.2	
38.9	26.0	64.9	15.7	12.2	690.0	
42.0	26.0	68.0	15.7	12.2	749.6	

Curve BMW65



Installation Diagram (inches)



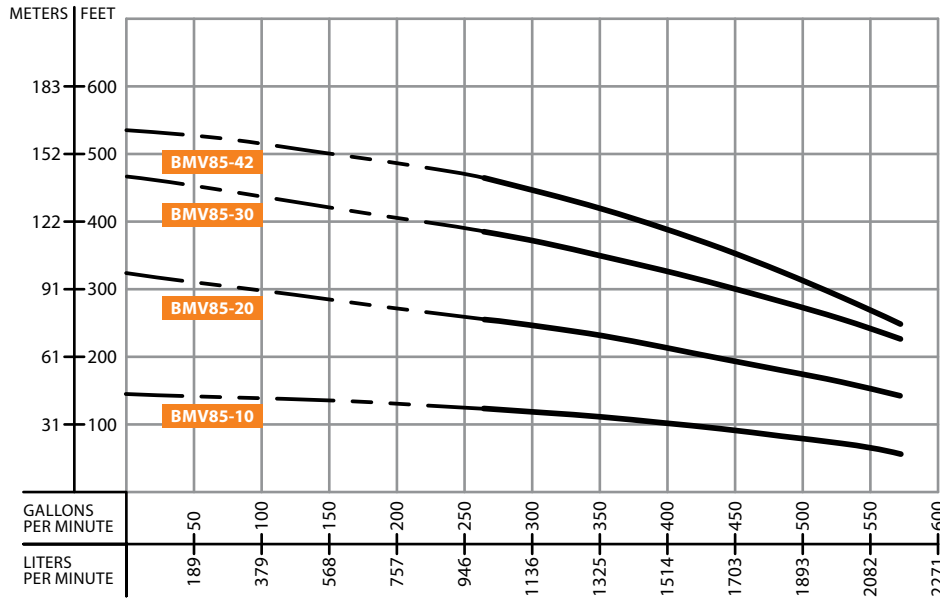
Performance table

MODEL	STAGES	HP	Q (GPM)	176.1	220.1	264.2	286.2	308.2	352.2	396.3	440.3
BMV65-11-1003	1	10	H (ft)	85.3	82.0	75.5	72.2	68.9	59.1	45.9	32.8
BMV65-10	1	15		121.4	114.8	108.3	105.0	101.7	91.9	78.7	68.9
BMV65-20-3003	2	30		242.8	236.2	219.8	210.0	203.4	187.0	167.3	137.8
BMV65-30-4003	3	40		367.5	354.3	328.1	315.0	305.1	282.2	252.6	213.3
BMV65-42-5003	4	50		426.5	406.8	377.3	360.9	337.9	308.4	272.3	216.5
BMV65-52-6003	5	60		564.3	531.5	495.4	472.4	449.5	413.4	367.5	298.6

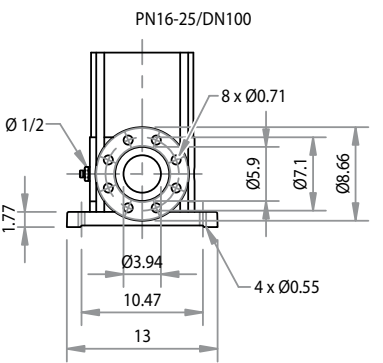
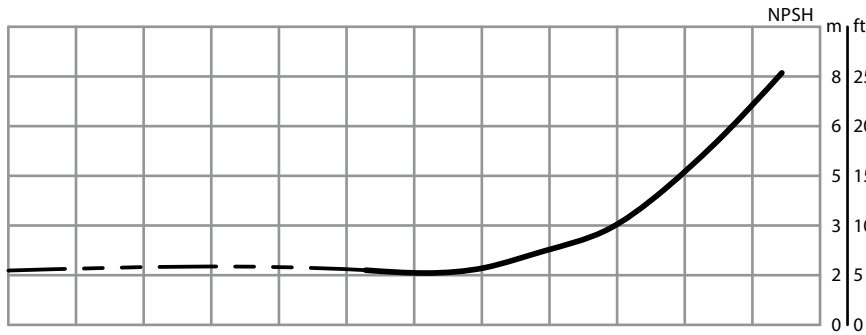
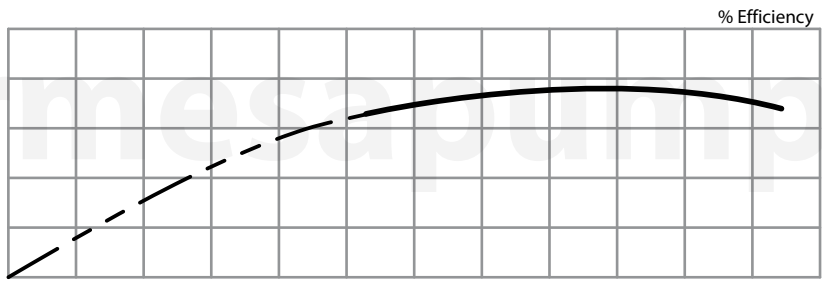
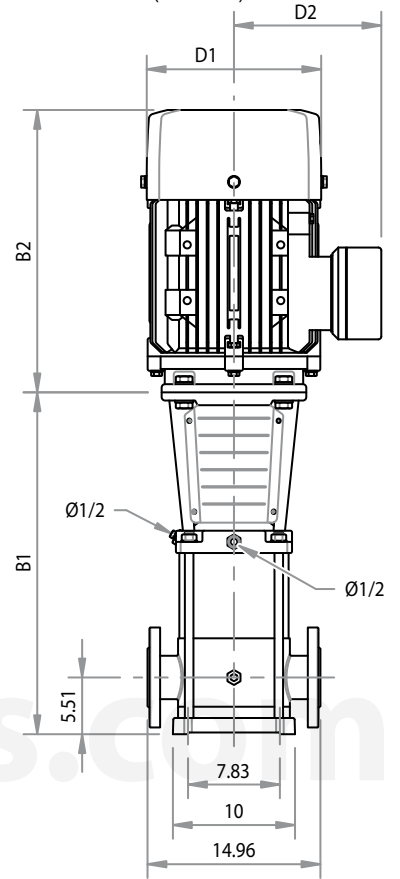
Size and weight

B1	B2	Size (inches)				Weight (lb)
		B1+B2	D1	D2		
22.1	16.9	39.0	10.2	8.2	240.3	
26.4	19.3	45.7	13.0	10.0	390.2	
29.7	23.2	52.9	14.2	11.2	546.7	
32.9	26.0	58.9	15.7	12.2	690.0	
36.2	26.0	62.2	15.7	12.2	740.8	
39.4	27.6	67.0	18.1	13.4	886.3	

Curve BMV85



Installation Diagram (inches)



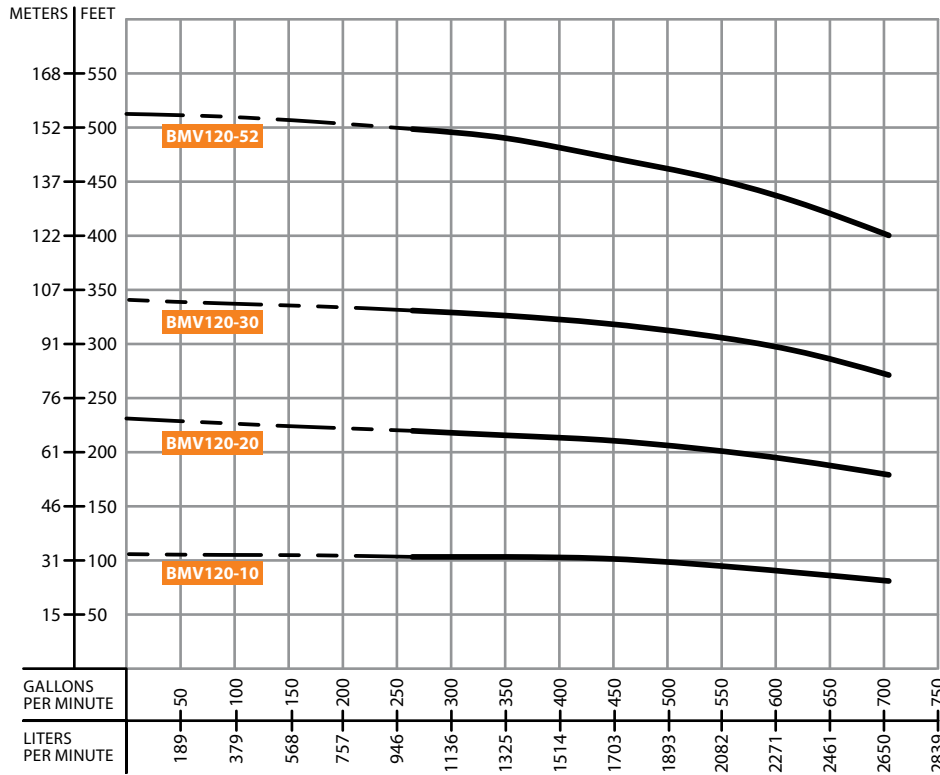
Performance table

MODEL	STAGES	HP	Q (GPM)	264.2	308.2	352.2	374.2	396.3	440.3	484.3	528.3	572.4
BMV85-10-2003	1	20	H (ft)	118.1	114.8	108.3	101.7	98.4	95.1	85.3	75.5	59.1
BMV85-20-4003	2	40		249.3	239.5	226.4	216.5	210.0	196.9	183.7	170.6	144.4
BMV85-30-6003	3	60		380.6	364.2	344.5	334.6	318.2	305.1	288.7	259.2	226.4
BMV85-42-6003	4	60		462.6	442.9	419.9	406.8	387.1	357.6	334.6	292.0	236.2

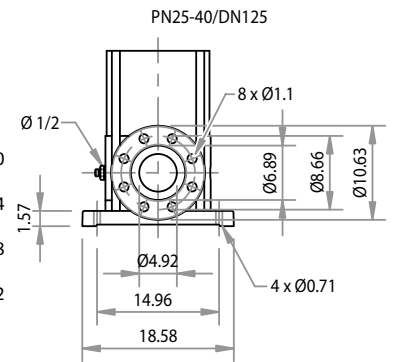
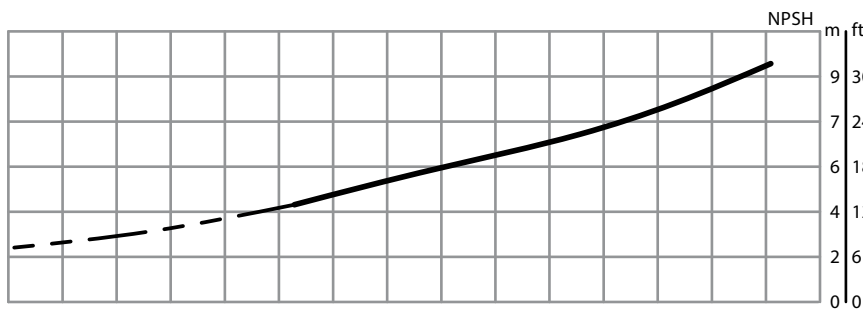
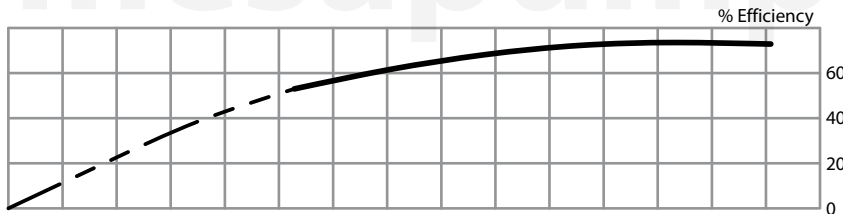
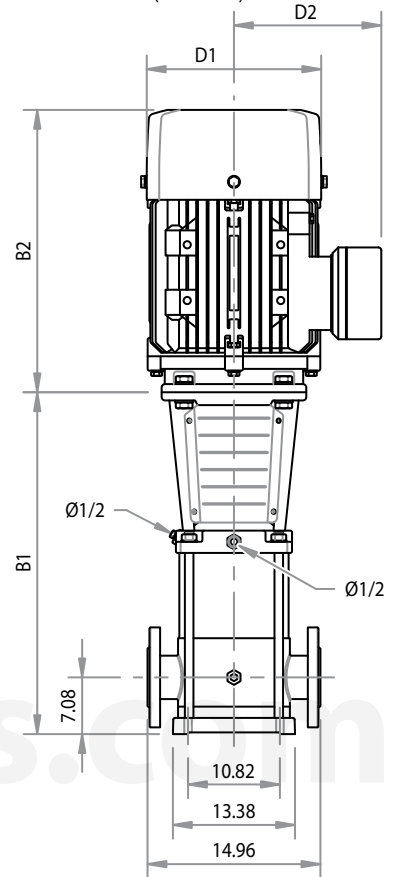
Size and weight

Size (inches)						Weight (lb)
B1	B2	B1+B2	D1	D2		
22.5	19.3	41.8	13.0	10.0	414.5	
30.4	26.0	56.4	15.7	12.2	670.2	
34.1	27.6	61.6	18.1	13.4	864.2	
37.7	27.6	65.2	18.1	13.4	873.0	

Curve BMV120



Installation Diagram (inches)



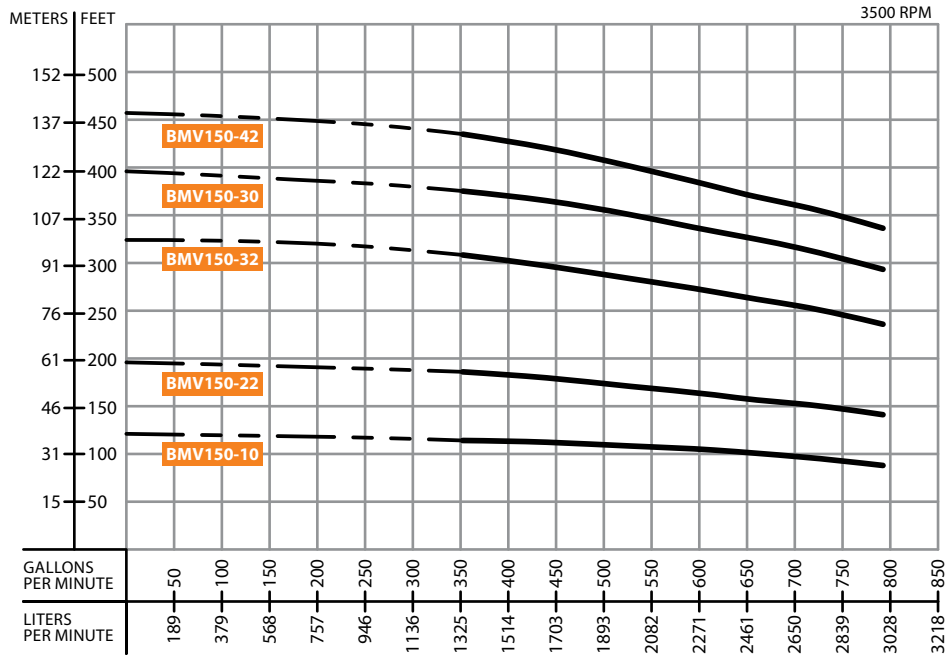
Performance table

MODEL	STAGES	HP	Q (GPM)	264.2	308.2	352.2	396.3	440.3	484.3	528.3	572.4	616.4	660.4	704.5
BMV120-10-2503	1	25	H (ft)	101.0	100.7	100.7	100.1	99.4	96.8	94.5	90.6	86.6	83.3	80.1
BMV120-20-5003	2	50		217.5	216.5	215.6	213.3	211.3	206.7	203.4	199.1	195.5	187.0	179.1
BMV120-30-7503	3	75		329.1	328.1	326.1	322.5	319.2	313.3	308.4	301.8	295.3	283.1	271.3
BMV120-52-10003	5	100		498.7	495.4	491.1	482.3	472.4	464.2	456.0	444.6	433.1	416.7	400.3

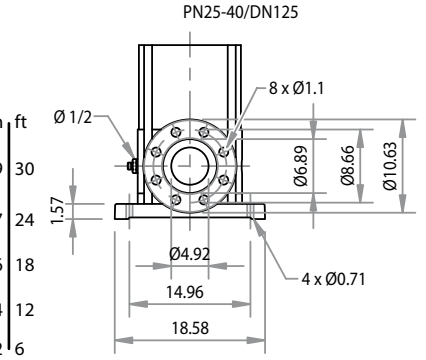
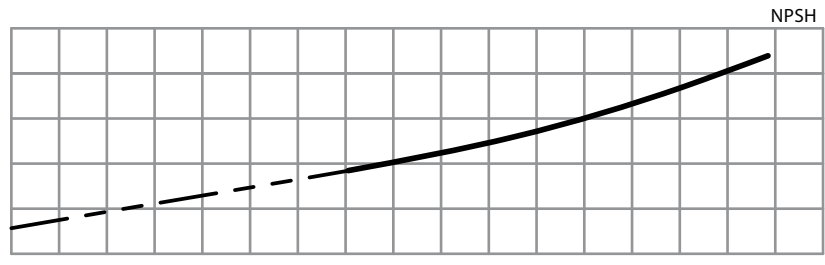
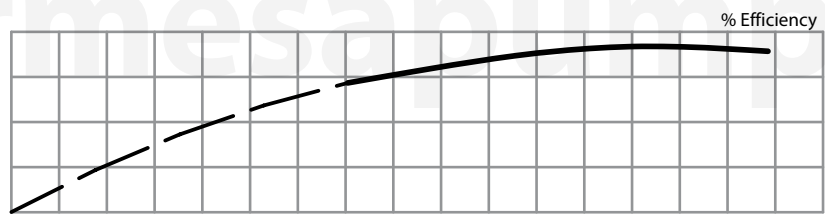
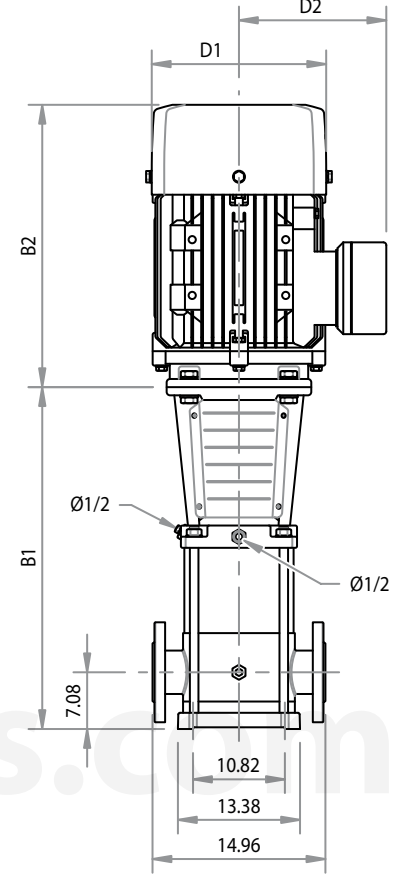
Size and weight

Size (inches)					Weight (lb)
B1	B2	B1+B2	D1	D2	
33.1	21.7	54.7	13.0	10.0	551.2
39.4	26.0	65.4	15.7	12.2	837.8
46.9	30.3	77.2	20.1	14.6	1201.5
59.4	33.3	92.7	22.8	16.1	1521.2

Curve BMV150



Installation Diagram (inches)

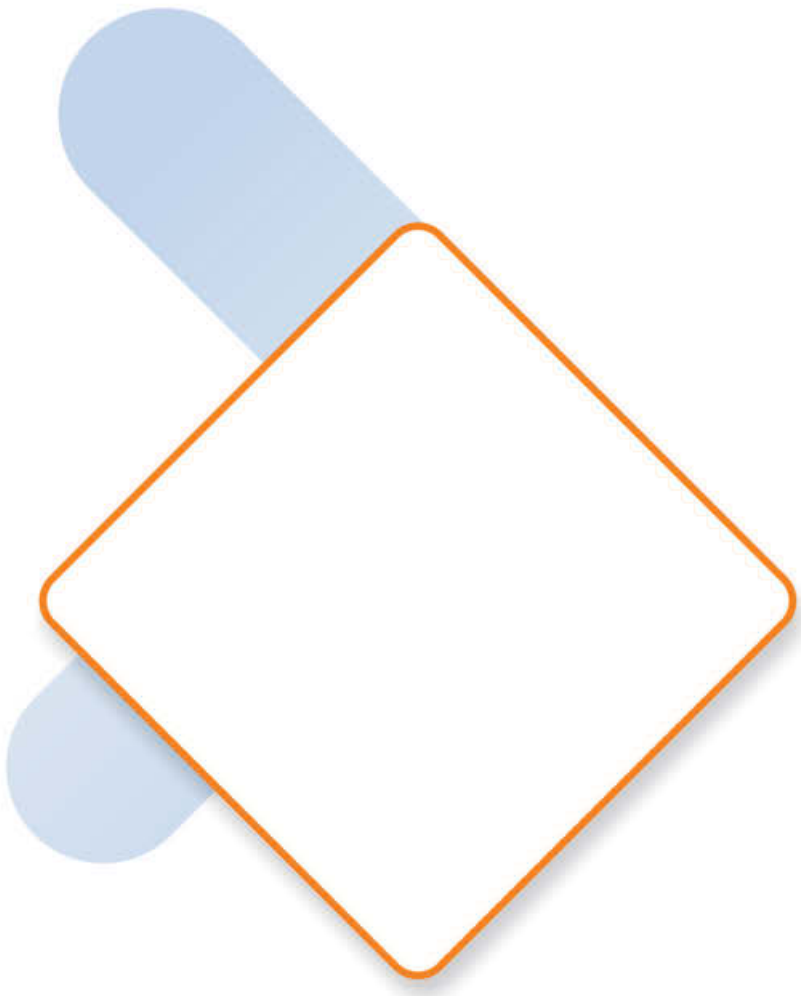


Performance table

MODEL	STAGES	HP	Q (GPM)	352.2	396.3	440.3	484.3	528.3	572.4	616.4	660.4	704.5	748.5	792.5
BMV150-10-3003	1	30	H (ft)	114.8	113.2	111.5	110.2	108.3	106.0	104.0	100.7	97.1	91.9	88.6
BMV150-22-4003	2	40		187.0	182.1	173.9	170.6	168.3	164.0	160.8	157.5	154.2	147.6	141.1
BMV150-32-7503	3	75		308.4	301.8	296.9	290.0	283.5	274.9	265.7	262.5	255.9	247.0	237.9
BMV150-30-10003	3	100		375.3	370.7	365.2	357.6	349.4	341.2	333.0	324.8	315.0	305.1	293.3
BMV150-42-10003	4	100		436.4	427.5	418.6	408.8	399.3	388.1	377.3	369.1	360.9	348.8	336.3

Size and weight

Size (inches)						Weight (lb)
B1	B2	B1+B2	D1	D2		
33.1	23.2	56.3	14.2	11.2	617.3	
39.4	26.0	65.4	15.7	12.2	793.7	
46.9	30.3	77.2	20.1	14.6	1201.5	
46.9	33.3	80.1	22.8	16.1	1466.1	
53.1	33.3	86.4	22.8	16.1	1499.1	



www.barmesapumps.com

© Barmesa Pumps LLC. All rights reserved.