



Equipped with the Winter Warfare Kit

- Upper and lower storage basket configuration with max payload of 150 lbs. Hinged and removable upper basket with 4 pins.
- Dedicated forward facing IR lights with blackout switch on dash panel.
- Optional M192 rear mounted tripod configuration for M240 with T&E.
- Rear facing spotlights or IR optional.
- External LINQ mounting locations for BRP accessories.



Manufactured in Colorado, USA
by Blackbridge Defense for AMDS | Platform: Ski-Doo - BRP

HIGHLIGHTS

- 2 Rotax® engines available: 600R E-TEC® or 900 ACE™
- KYB® 36 rear shock
- Multi-LinQ plate with 125 lb/56.7 kg cargo capacity
- 4.5 in. digital display
- LTS telescopic front suspension
- SC®-5U articulating rear suspension with locking mechanism (no tool required)
- Removable passenger seat with grips
- Ultra-high windshield with side deflectors
- Hitch receiver with 1,500 lb/680 kg towing capacity when equipped with an HD rear bumper (1,200 lb/544 kg std.)
- Air radiator with fan
- Standard electric start
- Deep snow running boards with large openings
- Easy-shift transmission (H-L-N) with RER™ electronic reverse (2-stroke)/electro-mechanical reverse (4-stroke)
- Pivoting mirrors
- pDrive™ clutch
- Low handlebar strap
- Pilot™ 7.4 skis
- Available with 20 in. or 24 in. track options

ROTAX ENGINE	600R E-TEC	900 ACE
Engine details	Liquid-cooled, two-stroke, eRAVE™	Liquid-cooled, four-stroke D.O.H.C., dry sump
Horsepower*	125	95
Cylinders – Displacement	2 599.4 cc	3 899 cc
Bore – Stroke (mm)	72.3 – 73	73 – 69.7
Fuel system	E-TEC direct injection	EFI
Fuel type Octane	Premium unleaded 91	Regular unleaded 87
Fuel tank (L/US gal)	42/11.1	42/11.1
Oil tank capacity (L/qt)	3.4/3.6	3.3/3.5

POWERTRAIN		
Drive clutch	pDrive with clicker	pDrive
Driven clutch	QRS	QRS
Drive sprocket pitch (mm/in.)	73/2.86	73/2.86

DRY WEIGHT		
Dry weight 20 in track (lb)	621	645
Dry weight 24 in track (lb)	642	666

DIMENSIONS		
Vehicle overall length (mm/in.)	3,222/126.9	
Vehicle overall width (mm/in.)	1,089/42.8	
Vehicle overall height (mm/in.)	1,513/59.6	
Ski stance (mm/in.)	889/35	
Available tracks (in.) (Length x width x profile)	Silent Cobra WT: 154 x 20 x 1.5 Silent Cobra SWT: 154 x 24 x 1.5 (opt. 900 ACE and 600R E-TEC)	

FEATURES		
Platform	REV® Gen4	Air radiator Fan
Headlights	Halogen	Brake system Brembo®
Skis	Pilot 7.4	Heated throttle lever/grips Standard (driver only)
Seating	WideTrack 2-up	Gauge type 4.5 in. digital
Handlebar	Standard with J-hooks/Grab handle	Windshield Ultra-high with mirrors
Riser block height (mm/in.)	145/5.7	Runner (in.) – Carbide (in.) 3/8 square – 4
Starter	Electric	Bumpers (front/rear) Heavy-duty/Hitch receiver
Reverse	RER (2-stroke engines) Electro-mechanical (ACE engines)	

SUSPENSION	
Front suspension	LTS
Front shock	Motion Control
Front suspension travel (mm/in.)	150/5.9
Rear suspension	SC-5U
Center shock	Motion Control
Rear shock	KYB 36
Rear suspension travel (mm/in.)	239/9.4



1 Multi-LinQ plate

Standard LinQ adaptable storage. Fits 16 and 20 in. wide LinQ accessories to maximize accessory options. Up to 125 lb (56.7 kg) of cargo capacity.



2 Skandic 2-up seat

The ideal combination of comfort and convenience. Driver and passenger seat offering comfort and maneuverability for the driver, and convenience for the passenger.



3 LTS front suspension

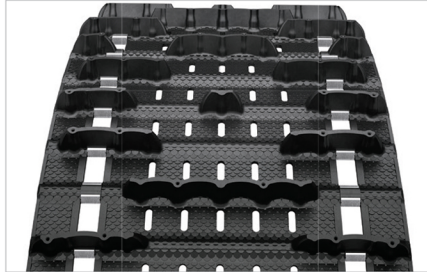
Industry-exclusive telescopic front suspension enables a large, flat belly pan for exceptional deep snow flotation.



(600 EFI engine shown)

4 Two engine options

This versatile model benefits from two reliable and easy-to-own engine choices. Powerful 4- and 2-stroke options ensure the right match for any rider.



5 20 in. and 24 in. wide tracks available

A wide range of options built to offer superb flotation and meet any towing needs.



6 SC-5U articulating rear suspension

The articulated rail maximizes deep snow traction in reverse, and its toolless locking mechanism is ideal for towing.

WWSK FEATURES



7 Upper and lower storage basket

Max payload 150 lbs. Hinged and removable upper basket with 4 pins.



8 Forward facing IR lights

with dedicated blackout switch on dash panel. 2-4 light configuration option.



9 Rear facing spotlights or IR optional



For details, contact Blackbridge Defense
info@blackbridgedefense.com

*Observed HP measured on internal dyno test in optimal conditions. ©2024 Bombardier Recreational Products Inc. (BRP) All rights reserved. ®, TM and BRP logo are trademarks of BRP or its affiliates. Products are distributed in the USA by BRP US Inc. +All other trademarks are the property of their respective owners. Because of our ongoing commitment to product quality and innovation, BRP reserves the right at anytime to discontinue or change specifications, price, design, features, models or equipment without incurring any obligation. AMDS and Blackbridge Defense are also indemnified of obligation when manufacturers update their models and its related price, design and features.