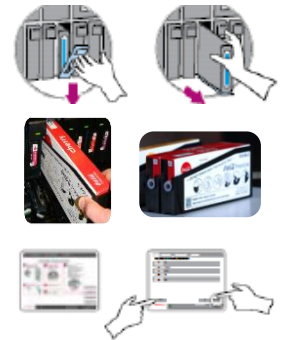




1. CAREFUL CARTRIDGE REPLACEMENT

- A. **Is It Fresh?** Check the “Enjoy By” date. (MM DD YY)
- B. **Use Two Hands to Remove Existing Cartridge** – One hand to pull the door handle down & the other hand to pull the cartridge forward.
- C. **Pull Off Cap and Foil Seal** from the new cartridge and insert into SmartPak tray. Ensure cartridge is seated properly.
- D. **Prime New Cartridge** – Close the door and press “Prime All”. Some brands (dark colored beverages) require 60 seconds of agitation by the dispenser (with the door closed) prior to touching “Prime All” to complete the change-out process.



2. MAINTAIN NOZZLE

- A. **Keep It Locked** – Make sure the nozzle is firmly locked into place.
- B. **Keep a Spare** – You can order one via Coca-Cola at 1-800-241-2653.
- C. **Keep It Clean** – Clean and sanitize nozzle daily using nozzle brush and KAY-5 Sanitizer Solution.



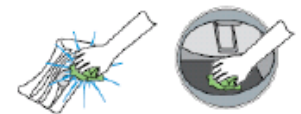
3. CHECK NON-NUTRITIVE SWEETENER (NNS)

- A. **Is It Fresh?** Check the “Enjoy By” date. (MM DD YY)
- B. **Is It Empty?** If the low calorie brands are grayed out (no color) then the NNS may be empty. Check NNS prior to each day part.
- C. **Is It Installed Properly?** Clean the NNS connector and storage compartment daily. Depress the white retaining lever on back of NNS connector and twist to the left to remove connector for cleaning.



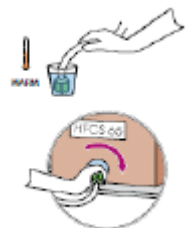
4. KEEP DRAIN AND DISPENSER CLEAN

- A. **Clean Daily** – Check and remove any debris in drain pan. Mix KAY-5 Sanitizer/Cleaner with 2 gal of clean, warm water and pour down drain every night. Use TRIPLE PLAY® solution with a clean white towel to clean outside of dispenser.
- B. **Drain Spider & Plunger** – Confirm drain spider is installed in drip tray drain opening. Use the Freestyle drain plunger if the drain is clogged.



5. MAINTAIN HIGH FRUCTOSE CORN SYRUP (HFCS)

- A. **Is It Fresh?** Check the “Enjoy By” date. (MM DD YY)
- B. **Check it Frequently** If it runs completely empty, then you must “Reset HFCS” on the dispenser. Ensure at least one full box is connected at all times.
- C. **Clean the Connector!** Sanitize the connector in properly mixed KAY-5 Sanitizer/Cleaner and air dry when changing bag-in-box. When reconnecting, ensure it is completely tightened.
- D. **Bag-in-Box Orientation** The BIB box connector should be pointing down.



Still have a question or require service?

Call Coca-Cola at 1-800-241-2653



DAILY CLEANING **Mix / Wipe / Remove / Scrub / Replace**

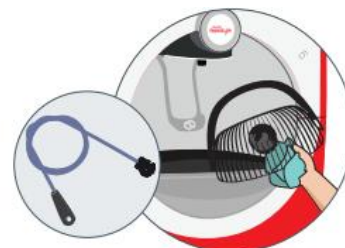
- A. **MIX Sanitizer Solution** – Mix 1 KAY-5 Frosty Sanitizer/Cleaner packet to 2 gal of clean, warm water.
- B. **REMOVE the Nozzle and clean** – Using a clean white cloth to protect fingers, twist nozzle clockwise and then pull down to remove.
- C. **SCRUB the Nozzle** at a 45 degree angle using a clean and sanitized nozzle brush. Rinse nozzle with warm potable water and then soak in KAY-5 Sanitizer Solution for 1 minute. (Do NOT soak nozzle overnight)
- D. **Clean the Nozzle Ring** – Using the white towel dipped into KAY-5 Sanitizer solution, clean the nozzle ring area where the nozzle fits into the dispenser. Use the sanitized nozzle brush at a 45 degree angle to reach the nozzle connection area.
- E. **Let Nozzle AIR Dry and Replace** – Use the white towel to put the nozzle back in place, and then turn counter-clockwise to lock and allow to air dry. **Take extra care to ensure that the nozzle is inserted completely and locked into place.**
- F. **Sanitize drip tray and drain line.** After nozzle is reinserted and locked in place, clean drip tray area with white towel and TRIPLE PLAY® Solution to remove any buildup. Clean drain line with drain cleaning brush and pour remaining KAY-5 Sanitizer solution down drain line to sanitize drip tray area and drain line. Confirm drain spider is reinserted into drain line when complete.
- G. **WIPE down the dispenser** – Use a clean white towel and TRIPLE PLAY® Solution wipe down the outside of the dispenser.



Mix



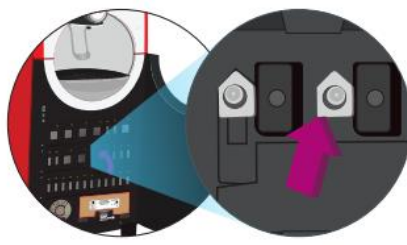
clean, then sanitize **the nozzle & injector ring**
you must soak the nozzle tip with food grade sanitizer. Then allow to air dry for 2 minutes



wash **cup rest, drip tray,**
and scrub **dispenser drain**



when replacing **ingredient cartridges** wipe **cartridge slots** or use cartridge slot cleaning tool



clean **cartridge probes** until the cloth comes away clean, repeat, then allow to air dry for 2 minutes



wipe **exterior surfaces**

Note: Help prevent drain clogs by pouring the Kay-5 Sanitizer Solution slowly down the drain daily.

Small Parts Program



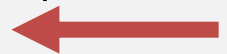
- Per location, order up to \$25 (at no charge) of small parts listed here

- Shipping requests other than standard ground transportation may be charged to your outlet

- Contact your Coca-Cola representative with any questions about the small parts programs



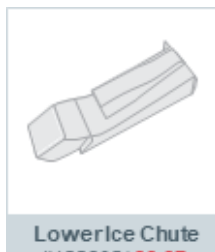
Use With
All
Dispensers



9000/8000 Specific



9000/8000



9100 Specific



9100

