



PROTEA ENGINEERING PROJECTS PVT. LTD.



ENGINEERING



CONSTRUCTION



ABOUT US

We are well experienced Engineering, Procurement and Construction (EPC) company. PE has strong expertise in technical services, engineering designs & construction with core industry experienced professionals. We are ISO certified and fast-growing company.



0 0 1 5

YEARS
EXPERIENCE



0 0 5 0

PROFESSIONALS
TEAM



0 0 1 0

CLIENTELE
SERVED



OUR COMPANY CULTURE

We plan for growth, infrastructure, and development by putting places first, creating communities fit for the future. It should reflect the needs of society and protect the interests of future generations.



- Create value for our customers
- Exceptional service with professional approach
- Remarkable customer satisfaction
- Sustainable & Environmentally friendly development



We are committed to pioneering innovative solutions that transcend boundaries, foster sustainable development, and elevate the standards of engineering craftsmanship.





PROTEA ENGINEERING PROJETS PVT. LTD.



OUR CORE TECHNICAL TEAM

“Engineering team at Protea Engineering Projects Pvt. Ltd. has a skilled and experienced professionals. Our team is committed to delivering high-quality work, meeting deadlines, and ensuring your complete satisfaction.”



Mr. Ravi Kumar

Mechanical
Engineering Manager
6 Year Experience,
M.Tech, NIT Calicut



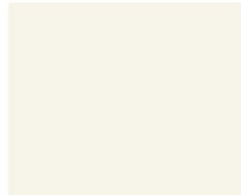
Mr. Kamlesh
Singh

Mechanical
Engineering Manager
6 Year Experience,
M.Tech, IIT Guwahati



Mr. Desh Raj
Singh

Civil/Structural
Engineering Manager
6 Year Experience,
M.Tech, IIT BHU



Mr. AM KS

QA/QC Manager
15 Year Experience
CSWIP, NACE, ANST
CERTIFIED



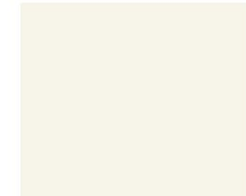
Mr. Rakesh
Singh

Senior Construction
Manager
10 Year Experience,
CSWIP 3.1 Certified



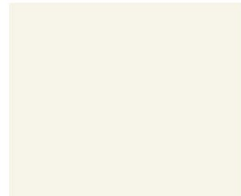
Mr. Anand
Kumar

Electrical Engineering
Manager
10 Year Experience



Mrs. Shruti
Kulkarni

Process Engineering
Manager
7 Year Experience,
M.Tech, Pune



Mrs. Manaswini
Mishra

Geotech Engineering
Manager
5 Year Experience,
M.Tech, NIT Rourkela



Mr. Sadik
Hussain

Civil Engineering
Manager
6 Year Experience,
M.Tech, NIT Rourkela



Mrs. Gopinath
sundar

Senior BIM/CAD
Manager
14 Year Experience

Protea Engineering is fast growing, determined, committed engineering and construction service provider. We have different teams for providing solutions to covered various discipline like Mechanical, Structural, Architectural, Civil, Infrastructural, Electrical, Geotech & process in basic, concept and detail engineering.

- ✓ We have embraced cutting-edge technology and improve our skills.
- ✓ We are committed to excellence and innovative to drive our success.
- ✓ We are fore-front in O&G, Water & Effluent treatment, PEB Building industry.
- ✓ We support our clients in all aspect of engineering, construction to maintenance works.



“The best way to make successful business in future, is to do hard work in present.”

By Our MD

OUR CORE BUSINESS

MINING & COAL PROCESSING PLANTS



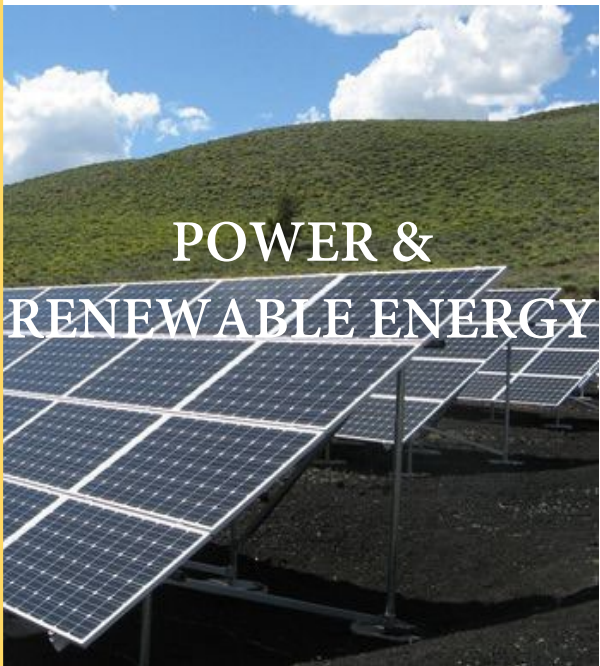
PRE-ENGINEERING BUILDINGS



WATER TRANSMISSION & TREATMENT PLANTS



POWER & RENEWABLE ENERGY



OIL & GAS (REFINERIES)



INFRASTRUCTURE DEVELOPMENTS



H & S procedures in Protea Engineering are of paramount importance to ensure the well-being of workers, protect the environment, and maintain the integrity of the projects.

- ✓ Risk Assessment and Hazard Identification
- ✓ Safety Training and Education
- ✓ Personal Protective Equipment (PPE)
- ✓ Emergency Response Plans
- ✓ Equipment Inspection and Maintenance
- ✓ Confined Space Entry, Electrical Safety, Fall Protection workshops etc.
- ✓ Communication and Reporting
- ✓ Supervision and Accountability

Additionally, We staying updated with local safety regulations and industry standards to maintain a safe work environment.

HEALTH & SAFETY POLICY



ENVIRONMENTAL POLICY

Environmental policy in Protea Engineering is essential for promoting sustainability and responsible environmental practices. Here's a framework for an environmental policy tailored;

- ✓ Compliance with Regulations
- ✓ Environmental Responsibility
- ✓ Sustainable Practices
- ✓ Life Cycle Cost Assessment
- ✓ Pollution Prevention
- ✓ Environmental Impact Assessment
- ✓ Sustainable Materials
- ✓ Monitoring and Reporting
- ✓ Accountability and Consequences
- ✓ Documentation and Records



Our Environmental policy serve as a guiding document for our engineering and construction projects, demonstrating our organization's commitment towards environmental management.



FOOTPRINTS



CLIENTELE



SRMC



FT
PRO-MECÂNICA

CONTACT US



www.proteaeng.com



INDIA

Mr. Ravi Kumar



PUNE, MAHARASHTRA,
INDIA, 411046



+091 7077681303



ravi.kumar@proteaeng.com



MOZAMBIQUE

Mr. Rakesh Singh



BEIRA SAFOLA,
MOZAMBIQUE



+258 85 564 3197



rakesh.singh@proteaeng.com