



MARK'S & GUNTER®

Italian Design Furniture

2022





MARK'S & GUNTER®

Italian Design Furniture

MARK'S & GUNTER: PROPONE PRODOTTI CON UNA QUALITÀ CHE NASCE DAL SAPER FARE, DA UNA TRADIZIONE ARTIGIANALE CHE SI TRAMANDA DI GENERAZIONE IN GENERAZIONE.

LA CONTINUA RICERCA DI NUOVE IDEE, DI NUOVI MATERIALI E SOLUZIONI TECNOLOGICHE, È IL DESIGN INNOVATIVO PENSATO PER LE PERSONE PRIMA ANCORA DELLA CASA IN CUI ABITANO.

È IL FRUTTO DELLE LE STORIE, DELLE TRADIZIONI E DELLE CAPACITÀ MANIFATTURIERE DI AZIENDE FORTEMENTE RADICATA SUL TERRITORIO, DEI VALORI CHE HANNO RESO IL MADE IN ITALY SINONIMO DI QUALITÀ, CREATIVITÀ E INNOVAZIONE IN TUTTO IL MONDO.

TUTTI I NOSTRI PRODOTTI SONO IN PRONTA CONSEGNA.

MARK'S & GUNTER: PROPOSES PRODUCTS WITH A QUALITY BORN FROM KNOWLEDGE, FROM A CRAFTSMANSHIP TRADITION HANDED DOWN FROM GENERATION TO GENERATION.

THE CONTINUOUS SEARCH FOR NEW IDEAS, NEW MATERIALS AND TECHNOLOGICAL SOLUTIONS, IS THE INNOVATIVE DESIGN CONCEIVED FOR PEOPLE BEFORE THE HOUSE IN WHICH THEY LIVE.

IT IS THE FRUIT OF THE STORIES, TRADITIONS AND MANUFACTURING SKILLS OF COMPANIES STRONGLY ROOTED IN THE TERRITORY, OF THE VALUES THAT HAVE MADE MADE IN ITALY SYNONYMOUS WITH QUALITY, CREATIVITY AND INNOVATION ALL OVER THE WORLD.

ALL OUR PRODUCTS ARE READY FOR DELIVERY.

MARK'S & GUNTER: PROPONE PRODUCTOS CON UNA CALIDAD NACIDA DEL CONOCIMIENTO, DE UNA TRADICIÓN ARTESANAL TRANSMITIDA DE GENERACIÓN EN GENERACIÓN.

LA BÚSQUEDA CONTINUA DE NUEVAS IDEAS, NUEVOS MATERIALES Y SOLUCIONES TECNOLÓGICAS, ES EL INNOVADOR DISEÑO CONCEBIDO PARA LAS PERSONAS ANTES DE LA CASA EN LA QUE VIVEN.

ES EL FRUTO DE LAS HISTORIAS, TRADICIONES Y HABILIDADES DE FABRICACIÓN DE EMPRESAS FUERTEMENTE ENRAIZADAS EN EL TERRITORIO, DE LOS VALORES QUE HAN HECHO QUE MADE IN ITALY SINÓNIMO DE CALIDAD, CREATIVIDAD E INNOVACIÓN EN TODO EL MUNDO.

TODOS NUESTROS PRODUCTOS ESTÁN LISTOS PARA ENTREGA.



INDEX

| | |
|----------------|-------|
| Sofàs | p.6 |
| Armchairs | p.26 |
| Coffe Tables | p.38 |
| Tables | p.48 |
| Chairs | p.64 |
| Accessories | p.72 |
| Side/Cupboards | p.78 |
| Tv Bench | p.94 |
| Bookcases | p.102 |
| Beds | p.110 |
| Night Tables | p.120 |
| Lamps | p.129 |
| Kitchen | p.143 |



SOFAS

| | | | |
|----------------|------|--------------|------|
| Accademia High | p.8 | Duca d'Aosta | p.16 |
| Accademia Low | p.9 | Bellagio | p.16 |
| Grantorino | p.9 | Lungotevere | p.17 |
| Borgogna Tight | p.10 | Lapis | p.18 |
| Campomarzio | p.10 | Leonard | p.19 |
| Canalgrande | p.11 | Davis | p.19 |
| Gonzaga | p.11 | New Link | p.20 |
| Pantelleria | p.12 | Tau | p.20 |
| Portocervo | p.13 | Palmo | p.21 |
| Positano | p.13 | Fripp | p.22 |
| Savoia | p.14 | Giorgio | p.22 |
| Cernobbio | p.14 | Panis | p.23 |
| Laglio | p.15 | Brooklyn | p.23 |
| Milano | p.15 | Dorsey | p.24 |



ACCADEMIA HIGH

Comfort rhymes with customization brought to its climax in Accademia High, whose defined and precise profile, from traditional sofa can adapt to the one of a chaise-longue to offer you fantastic relaxation moments. Slim and comfy in the rigour of its forms, Accademia High is a sofa that does not give up the comfort of its seats.

AH



ACCADEMIA LOW

Comfort rhymes with customization brought to its climax in Accademia Low, whose defined and precise profile, from traditional sofa can adapt to the one of a chaise-longue to offer you fantastic relaxation moments. Slim and comfy in the rigour of its forms, Accademia Low is a sofa that does not give up the comfort of its seats.

AL



GRANTORINO

A masterpiece of pure elegance. Refined and minimal, Grantorino becomes bold and sensual in its Black Edition. With its steel structure and seats with individually pocketed springs, it guarantees an absolute and long-lasting comfort. Its sartorial stitching – visible both on the cushions and on the external structure – can be 100% customized.

GT



BORGOGNA TIGHT

Pure visual impact, rounded shapes and harmony embracing you at the first glance. Its rounded and leather-covered base gives the whole structure a sense of fluctuation from the ground, accentuated and brought to its climax by its generous volumes.

BT



CAMPOMARZIO

Sobriety and elegance meet in Campomarzio the most sophisticated version of eclecticism. It sets personality and character at the center, with all its facets, nuances and its desire to be renewed every day.

CM



CANALGRANDE

Design at the service of your relaxation. Canalgrande is soft and delicate lines, combined with lovely accessories designed for free time to ensure you have everything at your fingertips. Its seats – which can be both traditional and chaise-longue like – are ideal to be customized with wooden backrests, armrests and headrests.

CG



GONZAGA

Gonzaga is the perfect union between elemental lines and love for the most elegant treats that make the difference. In a modern sofa with a minimal design like Gonzaga, what strikes you is the chromatic play, the chromed base, the armrest with a tailor-made finish – whose fantasy ideally recalls the cuff of the men's jacket.

GZ

PANTELLERIA

A seating system with a strong personality: Pantelleria is made up of comfortable and welcoming elements that envelop at first glance. Rounded and harmonious shapes, presents handcrafted details that recall tradition and tailoring. The backrests are well-defined volumes and their stitching accentuates their character, not least the server elements that confer rigor and elegance.



PL



PORTOCERVO

Freedom of composition, refined vivacity and passion for details. Portocervo is an extremely eclectic modular sofa, designed to adapt to every kind of living and interior design project thanks to its infinite customization possibilities. Classic or more contemporary, its mood changes according to the modules that make it up.

PC



POSITANO

Curved and elegant charme for this unsuspected sofa always protagonist. The contrasting profile draws its figure enhancing the shape. The formal and comfortable seat is perfect for the living room and for the lounge. Both its shape and its small design treats, like the feet in gold finishing that makes it a small masterpiece of living, with a story to tell.

PS



SAVOIA

Savoia is delicate vintage charm that meets geometry sweetest side: a refined and clean line made by simple continuous lines that ideally design a descending double S. Decisive shapes made more smooth by the upholstery irresistible softness and embellished by the charm of the retro design.

SS



CERNOBBIO

Irresistibly vintage, the Cernobbio sofa stands out for its iconic shape and for its delicately retro yet future-looking design. Its beauty is enhanced by the combination of materials and colours available for the covering.

CE



LAGLIO

Rigorous yet elegant shapes are accentuated by the original decorative detail given by the leather's unique texture. The combination of materials and colours available for the covering, together with the presence of integrated wooden elements, define the character of the Laglio sofa.

LGS



MILANO

Rigorously elegant lines are suddenly overturned by an original decorative detail: eclectic leather bands, placed at regular intervals, envelop the silhouette of the Milano sofa, for a touch of sophistication and charm.

MI



DUCA D'AOSTA

Rounded and harmonious shapes, Duca d'Aosta presents handcrafted details that recall tradition and tailoring.

DA



BELLAGIO

The formal and soft squared design of Bellagio sofa makes it suitable for any style of living. Bellagio sofa is available in different versions: linear sofa, sectional sofa and dual-face sofa playing with additional stripes quilted poufs and other accessories.

BL



LUNGOTEVERE

Charm of the '50s plus delicate and harmonious lines, for an elegance that from minimal becomes refined. A real throwback for all nostalgics and lovers of the best style icons.

LSG



LAPIS

Lapis is a living organism, ceaselessly transforming in its volumes, in the space and in the materials - molded and smoothed by the passing of time - emerging spontaneously from archaic cobblestones.

LP



LEONARD

Leonard is a seating system created by the aggregation of geometric volumes defined by an elegant silhouette. A continuous line draws the profile of the seats, backrests and padded armrests that welcome soft and fluffy cushions. A precise concept that translates into a linear and timeless design and places Leonard in perfect balance between classicism and contemporaneity.

LN



DAVIS

Thanks to a refined game of joints and combinations, Davis renews the living area focusing everything on volumes and geometries. An unmistakable softness, capable of transmitting warmth and at the same time a widespread sense of peace.

DV



NEW LINK

A new connection between the soft, enveloping shapes of the padding and the rigid, angular metal structure, deliberately left in view in the side elevation.

New Link builds its own harmony through a design made of contrasts.

NL



TAU

Born from the experience and observation of the oriental lifestyle.

The last letter of the Greek alphabet, but also a symbol rich in religious and spiritual meanings, Tau was born from the experience and observation of the oriental lifestyle: "if we sit on the ground, the sky will seem even higher". Simplicity and linearity are the stylistic code of Tau.

TA

PALMO

Palmo is inspired by the natural gesture of opening our hands toward the other. The creases of the leather become the unique features of its character seeking the welcoming of the spirit before the body.



PAL



FRIPP

Fripp is a system of linear or corner sofas created by the aggregation of geometric volumes defined by a high level of comfort. A precise concept that translates into a coherent and timeless design, in a perfect balance between design and comfort: the welcoming seats immediately give a sense of familiarity and relaxation.

FR



GIORGIO

A rigid and regular shell accommodates soft and enveloping seats and backrests. Giorgio has the formal characteristics of a slim and modern model without sacrificing the extreme comfort of classic sofas, on which to relax and experience an unforgettable moment of relaxation.

GR



PANIS

The iconic image of large loaves, a true local cult, becomes a source of inspiration for a line of upholstered furniture with soft and generous shapes that can be declined in all possible configurations. The cuts, which geometrize the enveloping shapes of the collection, recall the cuts made on the Altamura bread dough and which, with leavening, determine its classic shape, tell the essence of the project more immediately.

PAN



BROOKLYN

The strong personality of Brooklyn chairs arises from the encounter between extremely innovative materials in the world of upholstery and suggestively retro lines that evoke the armchairs of old cinemas or Off-Broadway theaters.

BR



DORSEY

Thanks to its right proportions and the sobriety of the lines, Dorsey has quickly established itself as an integral part of the Amura collection. The balance of its forms gives quality to the project. Design is not just “form and function”, but creative capacity; for Amura each item is a special edition, with unique finishes and details.

DS





ARMCHAIRS

| | | | |
|----------------|------|------------|------|
| Lungotevere | p.28 | Olbia High | p.33 |
| Opera High | p.29 | Olbia Low | p.33 |
| Opera Low | p.29 | Siena | p.33 |
| Savoia | p.29 | Positano | p.33 |
| Trevi | p.29 | Coach 03 | p.34 |
| Taormina | p.30 | New Link | p.35 |
| Venezia | p.30 | Medea | p.35 |
| Viacondotti | p.30 | Uchiwa | p.35 |
| Corso Como | p.30 | Brooklyn | p.35 |
| Pantelleria | p.31 | Ease | p.36 |
| Accademia High | p.32 | Mathilde | p.36 |
| Chaise Lounge | | Noa | p.36 |

LUNGOTEVERE ARMCHAIR

Charm of the '50s plus delicate and harmonious lines, for an elegance that from minimal becomes refined. A real throwback for all nostalgics and lovers of the best style icons.



LG



OPERA HIGH

Continuous and generous lines, extraordinarily rounded. An invitation to let yourself go, taking your seat. Opera is recognizable by its elegant back embroidered with four buttons and its decorative stitching, more or less evident depending on the color combinations you choose.

OH



OPERA LOW

Continuous and generous lines, extraordinarily rounded. An invitation to let yourself go, taking your seat. Opera is recognizable by its elegant back embroidered with four buttons and its decorative stitching, more or less evident depending on the color combinations you choose.

OL



SAVOIA

Savoia is delicate vintage charm that meets geometry's sweetest side: a refined and clean line made by simple continuous lines that ideally design a descending double S. Decisive shapes made more smooth by the upholstery's irresistible softness and embellished by the charm of the retro design.

S



TREVI

Solid, impressive and captivating. Trevi – also in its name – recalls an idea of elegance and strength, delicacy and grace. Comfortable and rational, it has a totally removable cover, to be customized in leather or fabric.

T



TAORMINA

The sixties design of this curved and comfortable armchair is an invitation to relax. The Taormina armchair can have a fixed or swivel base in solid ash. A particular shell shape designed to offer an immediate feeling of comfort.

TAO



VENEZIA

Whether for your studio or your living room, swivel armchair is synonymous with light-hearted! The enveloping and familiar forms of Venezia armchair are perfect for spaces dedicated to concentration and relaxation. A particular shell shape designed to offer an immediate feeling of comfort.

VZ



VIACONDOTTI

Three times beautiful and vintage. A charming design, where the play of materials not only uses exceptional protagonists, but becomes the strong point of Via Condotti. Saddle, fabric and wood make this essential masterpiece of rationality that, elegant as the street it takes its name from, perfectly adapts to the most modern settings.

VCO



CORSO COMO

Corsocomo: Soft, imposing and lovely. Corso Como armchair incorporates the concept of the circle born with the homonymous sofa and yet develops it in a unique and immediately recognizable way. A swivel armchair with rounded shapes emphasizing with flair and lightheartedness the sartorial detail of the visibile stitching.

CO



PANTELLERIA

Armchair with a strong personality: Pantelleria is comfortable and welcoming. Enveloping at first glance with its rounded and harmonious shapes. It features handcrafted details that recall tradition and tailoring. The backrests and armrests are well-defined volumes and their stitching accentuates their character.

PLA

ACCADEMIA HIGH CHAISE LOUNGE

Comfort rhymes with customization brought to its climax in Accademia High Chaise Lounge, whose defined and precise profile, from traditional sofa can adapt to the one of a chaise-longue to offer you fantastic relaxation moments.



AH



OLBIA HIGH

With its delicately retro lines, this armchair features a design marked by the juxtaposition of strong contrasts and delicate harmonies. Its essential allure creates the perfect play of geometries in minimalist interiors.

OBA



OLBIA LOW

With its delicately retro lines, this armchair features a design marked by the juxtaposition of strong contrasts and delicate harmonies. Its essential allure creates the perfect play of geometries in minimalist interiors.

OBAL



SIENA

The sixties design and the smart size are the main features of this armchair. The Siena armchair can have a fixed or swivel base in solid ash. A particular shell shape designed to offer an immediate feeling of comfort.

SI



POSITANO

The formal and comfortable seat is perfect for the living room and for the lounge. Both its shape and its small design treats, like the feet in gold finishing that makes it a small masterpiece of living, with a story to tell.

PSA

COACH 03

Coach is a comfortable and generous armchair, characterized by soft and enveloping lines. The shell structure in linen composite accommodates the seat and the large backrest padded and upholstered in leather or fabric to offer maximum comfort.



CH



NEW LINK

A new connection between the soft, enveloping shapes of the padding and the rigid, angular metal structure, deliberately left in view in the side elevation.

NL



MEDEA

Medea leaves nothing to chance, the soft and sculptural forms have no purely aesthetic value, on the contrary they arise from a study of interaction between the user and the seat itself. Medea, thanks to her bursting curves, has the task of enveloping and ensuring comfort, without sacrificing the evident aesthetic value.

MED



UCHIWA

As in a Japanese fan, the structure that supports the back is visible and becomes a decorative element that recalls the ribs of a leaf. The refinement of the lightweight, almost fragile-looking tubular, contrasts with the volume of the upholstery with enveloping and smooth shapes.

UCH



BROOKLYN

The strong personality of Brooklyn chairs arises from the encounter between extremely innovative materials in the world of upholstery and suggestively retro lines that evoke the armchairs of old cinemas or Off-Broadway theaters.

BR



EASE

Natural materials such as leather and wood are molded with craftsmanship and obsessive attention to detail to give life to real unique pieces. Perfect companion for moments of relaxation, Ease combines comfort and aesthetics and becomes the protagonist of the living room with her discreet elegance.

EA



MATHILDE

Simple geometries trace a delicate and at the same time strongly characterized volume. Also with this project Amura manages to connect the product to the territorial dimension, a highly recognizable character of the Amura brand.

MT



NOA

Softness is the main feature of Noa so full and florid that embodies the very concept of comfort. Soft are the sinuous lines of the ergonomic back frame, seemingly as delicate as a petal, but actually a solid shell that can encase the substantial dimensions of the seat, and give stability to the whole structure.

NOA





COFFE TABLE

| | | | |
|------------|------|---------------|------|
| Alghero | p.40 | Capri | p.44 |
| Sanremo | p.41 | Hourglass | p.45 |
| Monforte | p.41 | Vesta | p.45 |
| Vitruvio | p.41 | Range | p.45 |
| Grantorino | p.41 | Frame | p.46 |
| Axum | p.42 | Junsei | p.46 |
| Bigli | p.42 | Setacci | p.46 |
| Pontaccio | p.42 | Quattropietre | p.46 |
| Numana | p.42 | Olga | p.47 |
| Etna | p.43 | | |
| Monviso | p.44 | | |

ALGHERO

Alghero is characterized by the particular metal structure at its base. The contemporary and modern design with the elegant natural marble or lacquered top.



AG



SANREMO

Sanremo is a collection of coffee tables in which the contemporary and essential mood meets the aptitude to fit with measured elegance in residential living room or contract use.

SR



MONFORTE

A symphony that bursts in the game of its legs giving life to two completely different faces of the same coffee table. The first more cheeky, with wooden feet that turn outside. The second with a more intricate weave of the legs that form a single body incorporated in the center to support the top.

MV



VITRUVIO

The distinctive trait of Vitruvio is the imposing foot in solid wood giving up traditional legs in favour of a unique element showing a fascinating twist.

VIT



GRANTORINO

Stately, refined and captivating. Grantorino is a fascinating coffee table with unique details which becomes essential in the contemporary living to complete the collection born with its twin historic sofa.

GR



AXUM

A family of coffee tables with a round, square or rectangular base. The frame and the top give it the strongest touch of personality and character.

AX



BIGLI

Original, cute and creative. Bigli manages to be both massive and graceful thanks to the proportion between its "spider" foot in solid wood.

BI



PONTACCIO

Their linearity is both their strength and distinctive style. A single metal body folded in two points and covered in the finest leather, with the unique and precious treat of the visible stitching.

PN



NUMANA

The Numana coffee tables are epitomised by geometry and solidity. Their clean lines play on the overlapping of surfaces and contrasting materials, their juxtaposition fitting elegantly even in minimalist living areas.

NU

ETNA

The Etna coffee tables is a contemporary collection of cocktail table featuring curved and cylinder wood. The magazine rack with saddle top is a real statement piece.



ET



MONVISO

A family of coffee tables with a round top. The wooden frame color in contrast with the wooden top, gives it the strongest touch of personality and character.

MON



CAPRI

A masterpiece of modern, contemporary and ultra glam design for living rooms, suites and public areas that want to differentiate themselves by focusing on details, available in different sizes and multi combination of finishings.

CA



HOURGLASS

Their designs interprets perfectly, in its shapes, the meaning of the word that gives the collection its name. Hourglass tables finds different application and can satisfy different needs: in the domestic environment, they can be applied in different functions, in the contract sector their use is eminently transversal.

HOU

VESTA

Available in different dimensions (in height and diameter of the top) and two shapes, rectangular and round. Thanks to the different available versions, the Vesta coffee table allow for multiple combinations, underlining the playfulness of the model.



VT



RG

RANGE

Range, a defined area within which one can move, in order to obey the rules. This is the inspiration of the coffee tables collection, which does not aim to stretch the allowed limit, so that its design is the epitome of balance, the right balance between design and function.

FRAME

A new occasional table collection with a clearly contemporary line, with practicality and concreteness as its values, a metal structure available in different sizes and different colours.



FRA

JUNSEI

Junsei is a collection of coffee tables the linear, rigorous design perfectly embodies the meaning of the Japanese word that gives the collection its name: Junsei, in fact, means pure, genuine, clean.



JUN

SETACCI

The inspiration comes from the sieves used for the flour, commonly used in the agricultural tradition, which in Altamura are elevated to instruments of a sacral ritual, because of the centrality of the bread-making in this land.



ST

QUATTROPIETRE

Quattropietre represents the so-called "golden ratio" of classic architecture tradition, in a mathematical equilibrium of proportions. The volumes creating the shift between material and absence of material, give life to prospective compositions, playing with "full" and "empty".



QP



OLGA

Their linear and rigorous design perfectly embodies some of the Amura values, without losing the warmth of the soil, thanks to the simplicity of the materials that it's made of.

OG



TABLES

| | | | |
|------------------|-------------|----------------|-------------|
| Trastevere | p.50 | Garda Consolle | p.56 |
| Doge | p.51 | Doge Consolle | p.57 |
| Circomassimo | p.51 | Twister | p.58 |
| Portofino | p.52 | NX | p.59 |
| Bolgheri | p.53 | Exilis | p.60 |
| Ponza Desk | p.54 | Vanity | p.60 |
| Alghero Consolle | p.54 | Max | p.61 |
| Brera Consolle | p.55 | Spider Ovale | p.62 |
| Corder Consolle | p.55 | Spider Tondo | p.63 |

TRASTEVERE

Eclectic, fascinating and of great personality. An accessory ready to become the protagonist of your living with the essential lines.



TS



DOGE

Refined and timeless: Doge is the perfect compendium of clean shapes and balance between proportions and thicknesses.

D



CIRCOMASSIMO

Every detail of Circomassimo table reveals a strong, noble and luxury character, suitable in contemporary or modern design. An impressive and precious table, but essential at the same time.

CR



PORTOFINO

The Portofino rectangular table is the elegant result of melting in contemporary interior design: marble - wood - metal brass effects.

PF

BOLGHERI

The combination of the sensual shape of the metal legs together with the refined allure of the silver roots, marble top, give life an unconventional elegance.



BLG



PONZA DESK

The desk has become an essential piece of furniture. Ponza, with its strong and refined lines, adapts perfectly to all kind of public or domestic environment.

PO



ALGHERO CONSOLLE

The charming elegance of Alghero collection starts from its metal structure. With its play of lights, combined with the majesty of the top that becomes the undisputed protagonist of the indoor environment.

AGC



BRERA CONSOLLE

The structure and the drawer are available in essence ebony or matt canaletto walnut, the lacquered version can be customised with different lacquered colors, matt or glossy effect.

BR



CORDER CONSOLLE

Purely geometric charm and hypnotic play where lines with a unique profile and the most sparkling metals are the protagonists. The Corder collection is immediately recognizable through its metal leg.

CD



GARDA CONSOLLE

The Garda console in wood with metal brass legs has a charm, originality and refined soul. Suitable in contemporary and modern living room, residential entrance or contract use.

GD



DOGE CONSOLE

Graceful and delicate console: perfect for living rooms and environments with already outlined patterns. Doge is a console with precise and rigorous lines, embellished with soft details such as rounded corners and the shape of the top.

DGC



TWISTER

The sculptural base in massive wood is borne out of an asymmetrical weave of lines that give shape to a solid but dynamic, flexuous but essential. Twister as torsion, then, but also as unexpected outcome: that of the three legs of the table which, as branches moved by the wind, tangle and give life to different geometrical shapes according the point of view.

TWI

NX

The innovative and central element of this table is the body in massive wood, that outlines with an airy and slight line the two letters giving it its name. N and X thus give life to a dynamic profile that recalls that of a falling star or of an arrow: a bearing structure with a strong evocative power.



NX



EXILIS

Exilis, Latin for light, impalpable, but also “exigere”, latin for measuring, carefully pondering. Frailty and strength, lightness and sturdiness: these are the borders within which Exilis tables exist, with their essential lines, the slight thickness of the slabs that test to the limit the potentiality of the materials.

EX



VANITY

In Vanity, strength a voluptuousness find the perfect balance in a play of lines that never yields to excess: the top is politely voluptuous, free from asperities; the legs remind the crossed legs of a woman who lives her femininity with ease.

VAN



MAX

Ampi spazi e giochi di linee per una perfetta proporzione.

MX



SPIDER OVALE

Razionalità ed essenzialità dei volumi come riflessi della dinamicità metropolitana.

SO



SPIDER TONDO

Razionalità ed essenzialità dei volumi come riflessi della dinamicità metropolitana.

ST



CHAIRS

| | | | |
|-----------------|------|--------------|------|
| Pam | p.66 | Panis | p.69 |
| Chia | p.66 | Panis-dining | p.69 |
| Liberty High | p.66 | Bridge | p.69 |
| Liberty Arm | p.67 | Vienna | p.70 |
| Liberty Stool | p.67 | Hamac | p.70 |
| Alicudi | p.67 | Hamac Stool | p.70 |
| Giudecca | p.67 | Grace | p.71 |
| Elba | p.68 | Avril | p.71 |
| Elba Swivel | p.68 | | |
| Flaminia High | p.68 | | |
| Lungotevere Arm | p.68 | | |

PAM

The inspiration come from from nature and the observation of the palm leaves, from which it takes shape and defines its back and session.



PAM

CHIA

Sinuously elegant and refined, the Chia chair possesses a unique personality that is certain to become iconic. It features a blend of geometry and softness, contrast and harmony.



CHA



LIBERTY HIGH

Cute and refined, Liberty is the essence of comfort designed to become accessory and decoration – perfect to fit with harmony in residential and hospitality contexts – becoming the absolute protagonist.

LH



LIBERTY ARM

Cute and refined, Liberty is the essence of comfort designed to become accessory and decoration – perfect to fit with harmony in residential and hospitality contexts – becoming the absolute protagonist.

LA



LIBERTY STOOL

Cute and refined, Liberty is the essence of comfort designed to become accessory and decoration – perfect to fit with harmony in residential and hospitality contexts – becoming the absolute protagonist.

LIS



ALICUDI

Sinuous, generous and welcoming. A mix of geometry and softness, Alicudi is a game of contrast and harmony.

AD



GIUDECCA

Its pure lines place it in a range of creations destined to go beyond time and fashion trends. Cozy back, clean and straight design, play of materials and contrasts arising from wood, leather and fabric.

GI



ELBA

Elba is a seat with an elegant and refined mood. The material contrast is original, in metal for the fixed version and in open pore ash for the swivel version, and the leather or fabric covering of the seat and backrest.

EL



ELBA SWIVEL

Elba is a seat with an elegant and refined mood. The material contrast is original, in metal for the fixed version and in open pore ash for the swivel version, and the leather or fabric covering of the seat and backrest.

ES



FLAMINIA HIGH

Delicate and modern twist. The Flaminia chair has a modern and pleasant design, characterized by a rounded seat and a back with an accentuated curvature. The essential and slim line of the legs perfectly suit the finely upholstered back that ideally follows the profile of a curve.

FH



LUNGOTEVERE ARM

The Lungotevere collection gathers a series of design objects united by the same delicate and refined mood, given by shapes that recall the 60s and their unforgettable style.

LU



PANIS

Heritage is a concept that, in Altamura, is closely identified with the warm fragrance of a large loaf of bread, inviting to conviviality. And it's to this very millennia-old tradition and to its land of origin that Amura wants to pay homage with its new Panis Collection.

PN



PANIS-DINIG

Heritage is a concept that, in Altamura, is closely identified with the warm fragrance of a large loaf of bread, inviting to conviviality. And it's to this very millennia-old tradition and to its land of origin that Amura wants to pay homage with its new Panis Collection.

PND



BRIDGE

Architecture and design work together to create the rigorous and, at the same time, sinuous lines of the Bridge seat. The name itself underlines the inspiration to such architectural element.

BG



VIENNA

Vienna is an original take on the classic chairs in metal tube. The treatment on cuoio enhances it with precious details, at the same time functional and aesthetic, which hark back to the world of saddlers.

VIE



HAMAC

The protagonist of this seating collection is linen, interpreted in its basic essence. The shell of the chairs, in fact, has been conceived as a draping on a wooden frame, as if the soft fabric is beating under the resin, as if time had frozen its motion.

HAM



HAMAC STOOL

The protagonist of this seating collection is linen, interpreted in its basic essence. The shell of the chairs, in fact, has been conceived as a draping on a wooden frame, as if the soft fabric is beating under the resin, as if time had frozen its motion.

HAMS



GRACE

Straight lines and games of soft and hard materials for a perfect seating experience.

GR



AVRIL

Straight lines and games of soft and hard materials for a perfect seating experience.

AV



ACCESSORIES

| | | | |
|------------------|------|----------------------|------|
| Grantorino Pouf | p.74 | Twenty Rug | p.75 |
| Quaranta Pouf | p.74 | Sirmione Octagon Rug | p.76 |
| Alcamo Pouf | p.74 | Sirmione Frame Rug | p.76 |
| Corso Como Pouf | p.75 | Decorative Cushion | p.76 |
| Ischia Bench | p.75 | Eclipse Mirror | p.77 |
| Favignana Mirror | p.75 | | |

GRANTORINO POUF

Fascinating, modern and ultra glam: a solution designed for living areas having a contemporary soul wishing to differentiate themselves in details.



GRP

QUARANTA POUF

Comfortable and versatile thanks to its small size. Precious its Octagon patterned finish that incorporates the distinctive MC motif: an elegant and refined alternative to the more traditional coverings in classic leather and fabric.



QU



ALCAMO POUF

Cozy, casual and super soft, Alcamo offer endless possibilities of personalization thanks to its generous dimensions, where you can draw and travel with your imagination.

ALC



CORSOCOMO POUF

Corso Como is a pouf with clear-cut lines, bearer of a fresh mood capable of expressing an essential image. Its details – such as the visible stitching – are extremely refined.

COP



ISCHIA BENCH

Ischia is a bench with essential features that is made soft by the enveloping shapes of the structure. It offers free sitting, encouraging conversations and relationships.

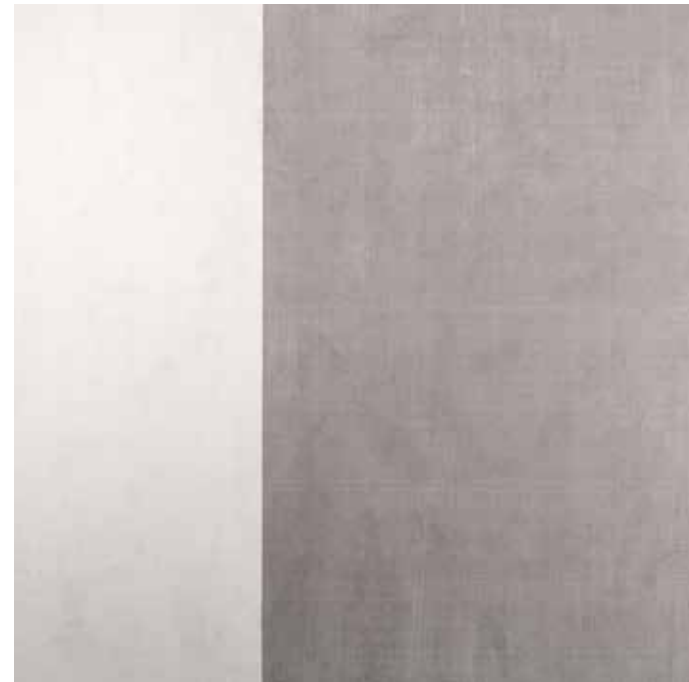
ISC



FAVIGNANA MIRROR

Favignana mirror plays with a refined marble base a simple language to create a stunning presence. The standing mirror is a floor mirror with the luxury back covered in natural leather and modern stitches.

FVG



TWENTY RUG

Rug with saddle band and yarn border. Thanks to the cleanliness and clarity of the shapes, it is ideal for spaces with a strong character where you don't want to give up the softness of a rug.

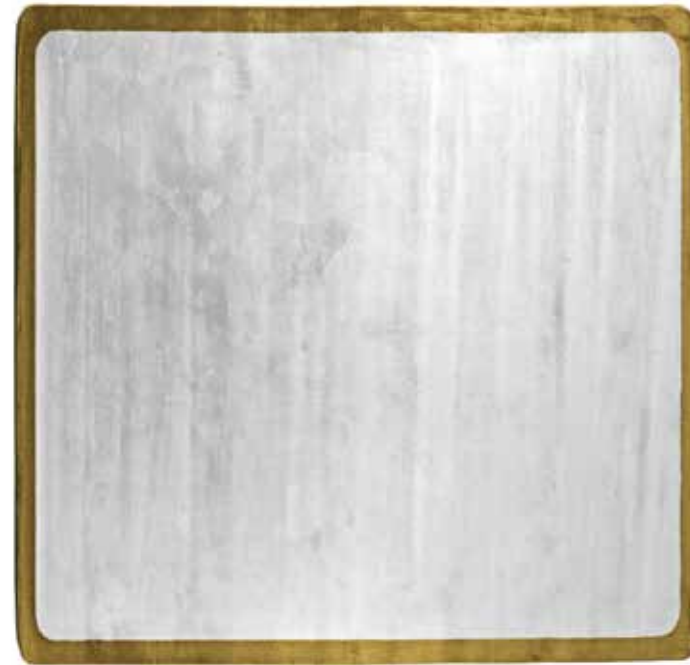
TW



SIRMIONE OCTAGON RUG

Inlaid Octagon draw rug with yarn border. Thanks to the cleanliness and clarity of the shapes, it is ideal for spaces with a strong character where you don't want to give up the softness of a rug.

SOC



SIRMIONE FRAME RUG

Rug with saddle band and yarn border. Thanks to the cleanliness and clarity of the shapes, it is ideal for spaces with a strong character where you don't want to give up the softness of a rug.

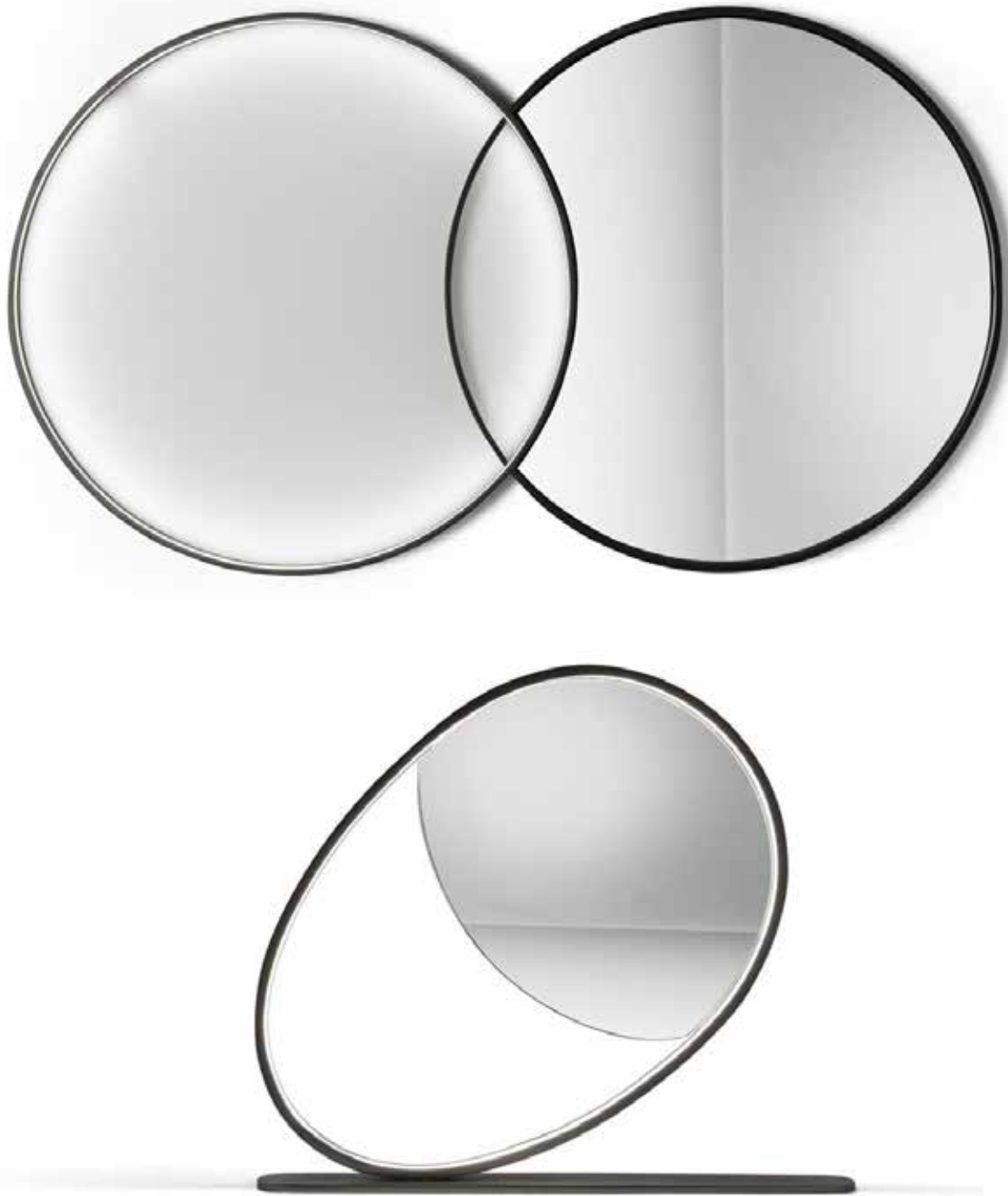
SFR



DECORATIVE CUSHIONS

A collection of customizable cushions for sofas and armchairs, available in a wide range of materials.

CSH



ECLIPSE MIRROR

Eclipse is a unique one-piece with an unorthodox twist, a mirror and a led light ring at the same time, with its two “souls” not fully overlapping. Iconic object, Eclipse seizes the day, living shape to the exact moment when two celestial bodies cross, just before they are completely aligned.



SIDE/CUPBOARDS

| | | | |
|--------------------------|------|----------------------|------|
| Lingotto Sideboard | p.80 | Levanzo Cupboard | p.86 |
| Cicerone Sideboard | p.81 | Garda Sideboard | p.86 |
| Garda Small Cupboard | p.81 | Cinqueterre Cupboard | p.87 |
| Villa Borghese Sideboard | p.82 | Bagutta Circle | p.88 |
| Laguna Low | p.82 | Garda Cupboard | p.89 |
| Moscova Glass | p.83 | Cinqueterre Comp. | p.90 |
| Bagutta Wood | p.83 | Story 8 | p.91 |
| Lingotto Cupboard | p.84 | Class | p.92 |
| Levanzo Sideboard | p.85 | Libra | p.92 |
| Levanzo Sideboard Low | p.85 | Mood Drawers | p.93 |



LINGOTTO SIDEBOARD

Lingotto is a collection of dual face storage units with a unique personality, unconventional and elegant, real jewels capable of imposing their beauty and making it the protagonist of any project.

SB



CICERONE SIDEBOARD

Imposing and rigorous, Cicerone elegantly combines clean and essential forms with the play it creates using negative space. Its handles are made using the void.

CS



GARDA SMALL CUPBOARD

An elegance that is easy to exalt with the choice of vintage colors for the structure, to be combined with the legs in metal which are more contemporary. A touch of elegance for the living room or the dining room in modern and contemporary house.

GC



VILLA BORGHESE SIDEBOARD

Villa Borghese elegantly combines clean and essential forms with the play it creates using negative space. Its handles are made using the void.

VB



LAGUNA LOW

The aesthetic originality of Laguna, minimal but rich in refined details and precious finishes, interprets the functional needs of the contemporary home with great personality.

LGN



MOSCOVA GLASS

Moscova is a collection of sideboards whose main features are multi-functionality and extreme versatility. The expressiveness and solidity of the materials become characteristic in Moscova: a vintage sideboard available with four or three doors.

MO



BAGUTTA WOOD

The Bagutta cupboard family, with a decisive contemporary character and precious construction details, is available in three versions embracing a wide range of customizations between decorative elements and finishes.

BW



LINGOTTO CUPBOARD

Unusual, eclectic and fascinating. Lingotto is a collection of dual face storage units with a unique personality, unconventional and elegant, real jewels capable of imposing their beauty and making it the protagonist of any project.

LC



LEVANZO SIDEBOARD

Sinuous and elegant, the Levanzo collection – composed from cupboard, sideboard, chest of drawers and night table – has a retrò and sophisticated taste.

LZS



LEVANZO SIDEBOARDS LOW

Sinuous and elegant, the Levanzo collection – composed from cupboard, sideboard, chest of drawers and night table – has a retrò and sophisticated taste.

LZS



LEVANZO CUPBOARD

Sinuous and elegant, the Levanzo collection – composed from cupboard, sideboard, chest of drawers and night table – has a retrò and sophisticated taste.

LZC



GARDA SIDEBOARD

The mood is elegant and original: the ribbed profile is its distinctive trait, as are the particularly metal legs that contrast with the larger, more welcoming structure.

A hypnotic motif enhancing the beauty of wood and the purity of its essence.

G



CINQUETERRE CUPBOARD

The unexpected interplay of joints and infinite modularity make this dual-face model absolutely unique.

The Cinqueterre collection is not only a sideboard and emphasizes the qualities of wood making tradition in a contemporary key.

BAGUTTA CIRCLE

The Bagutta cupboard family, with a decisive contemporary character and precious construction details, is available in three versions embracing a wide range of customizations between decorative elements and finishes.





GARDA CUPBOARD

An elegance that is easy to exalt with the choice of vintage colors for the structure, to be combined with the legs in metal which are more contemporary. A touch of elegance for the living room or the dining room in modern and contemporary house.



CINQUETERRE COMPOSITION

The unexpected interplay of joints and infinite modularity make this dual-face model absolutely unique.

The Cinqueterre collection is not only a sideboard and emphasizes the qualities of wood making tradition in a contemporary key.



STORY 8

Wide spaces and games of lines for a perfect life experience.

ST



CLASS

Wide spaces and games of lines for a perfect life experience.

CL



LIBRA

Wide spaces and games of lines for a perfect life experience.

LY



MOOD DRAWERS

Wide spaces and games of lines
for a perfect life experience.

MC



TV BENCH

| | |
|----------------------|-------|
| Purity Expression | p.96 |
| Relation Above | p.97 |
| Industrial Style | p.97 |
| Landascape e Feeling | p.98 |
| Story 8-D | p.98 |
| Metropolitan | p.99 |
| Exclusive Impression | p.100 |
| Solid | p.101 |



PURITY EXPRESSION

The light that marks the space enhances the harmony of the material, restoring warmth, refinement and clean lines.

PE



RELATION ABOVE

Architecture becomes dynamic and free to relate to objects.

R



INDUSTRIAL STYLE

When human work is transformed into a dimension full of charm and transparency.

IS



LANDSCAPE E FEELING

Nature and landscape create warm atmospheres and living relations.

LF



STORY 8-D

Wide spaces and games of lines for a perfect life experience.

STD

METROPOLITAN

Rationality and essentiality
of volumes as reflections of
metropolitan dynamism.



MT



EXCLUSIVE IMPRESSION

Refinement and clean details characterize the Astor living area. Different materials intertwine to create full and empty games.

EI



SOLID

Wide spaces and games of lines for
a perfect life experience.

SD



BOOK CASES

| | |
|--------------|-------|
| Viareggio | p.104 |
| Macchiavelli | p.105 |
| Parere | p.106 |
| Eresia | p.107 |
| Library | p.109 |

VIAREGGIO

Light, eclectic and adaptable. It interprets the functional needs of contemporary spaces, endowing them with character and charm through its many material and colour personalisations.



VIA

MACCHIAVELLI

Machiavelli is the system designed for contemporary living rooms, to bring order with the maximum neutrality. A modular system with a strong visual impact – designed to be created by your imagination and needs.





PARERE

A synthesis of design and functionality, Parere expresses in itself the contrast between vertical elements (featuring a materic thickness) and the horizontal elements (light and ethereal, almost as a line into space).



ERESIA

Geometry and strictness characterize this particular bookcase that combines design and functionality.

In Eresia volumes alternate in a balanced play of proportions. Cubes and parallelepipeds are spaced out with openings in a playful succession of "empty" and "full".







LIBRARY

When human work is transformed into a dimension full of charm and transparency.

LB



BEDS

| | |
|----------------------|-------|
| Borgogna Bed | p.112 |
| Anfiteatro | p.113 |
| San Marco Low | p.114 |
| Casanova Bed | p.115 |
| Corsocomo Bed | p.115 |
| Ducale Gran Capitonè | p.116 |
| Ducale Gran Coupè | p.116 |
| Ducale High | p.117 |
| Ducale | p.117 |
| Campomarzio Bed | p.118 |
| Riomaggiore | p.119 |

BORGOGNA BED

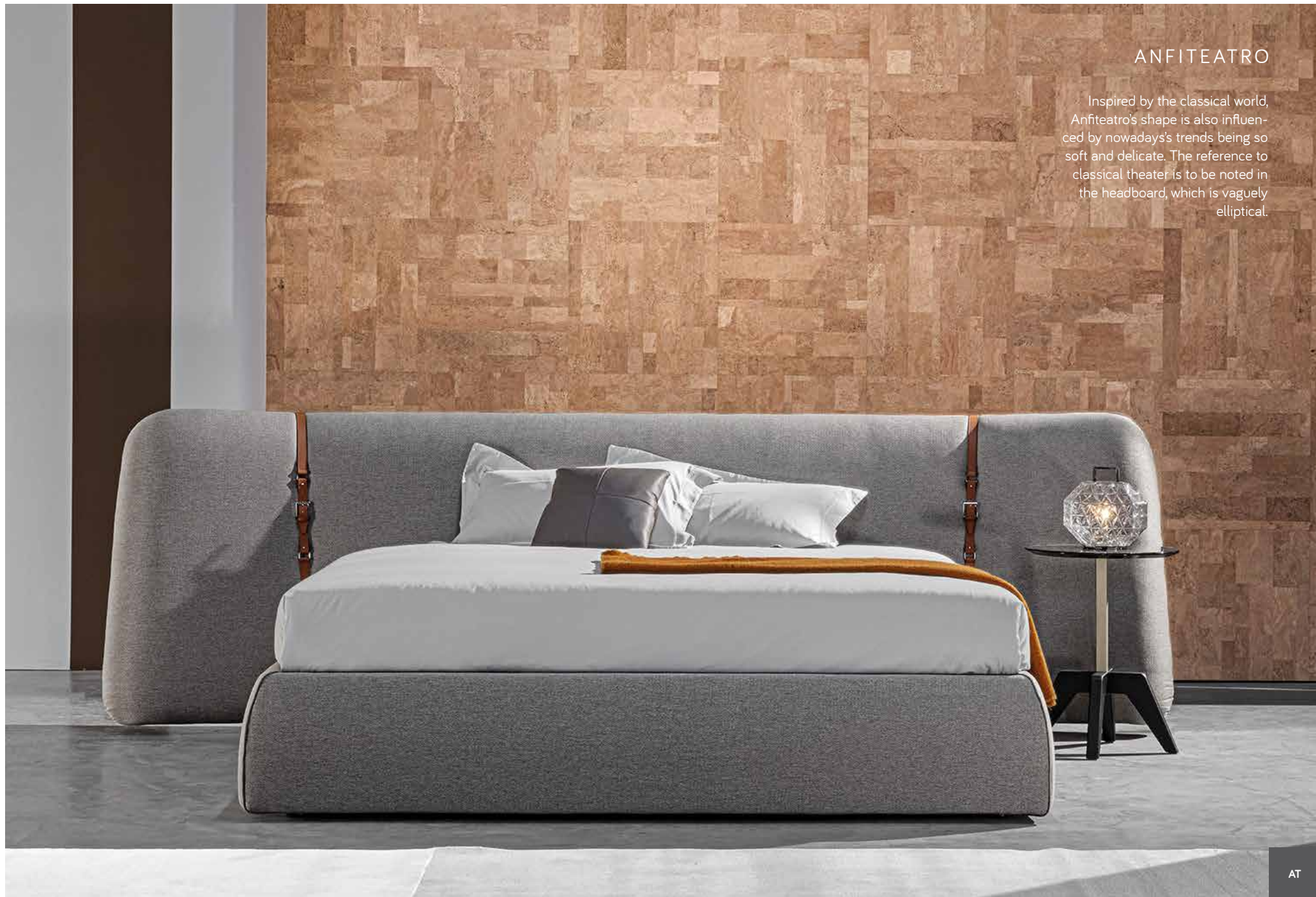
Borgogna ideally incorporates the concept of insulation by transferring it to the leather island surrounding the bed. Making it elevated, it gives a lovely floating sensation. The idea of relaxation is also amplified thanks to its extraordinary soft lines – just like in its twin sofa.



BB

ANFITEATRO

Inspired by the classical world, Anfiteatro's shape is also influenced by nowadays's trends being so soft and delicate. The reference to classical theater is to be noted in the headboard, which is vaguely elliptical.



AT

SAN MARCO LOW

Metal and wood dictate the beauty and charm of San Marco. Chromatic and material interplay become essential in its balance of elements. San Marco can be also enriched with a practical container box.



SN



CASANOVA BED

Eclectic, charming and enigmatic. Casanova is a sweet invitation to let yourself in his soft embrace. A simple bed with intriguing details: its soft headboard recalls the cushions profile and seems to promise the same softness.

CN



CORSOCOMO BED

Corso Como makes of elegance and details its strong point. The peculiarity of its head is to be noted in two stages: the lower part that delineates the first block and serves as a base for the two decorative elements, wavy and "Octagon" patterned that remain behind the two cushions and drawing a refined and unique fantasy.

CC



DUCALE GRAN CAPITONNÉ

The amazing capitonné work of the fabric or leather covering of its headboard is the absolute protagonist of this version. Regale rhymes with comfort in Ducale Gran Capitonné: both versions are available with or without storage box.

DG



DUCALE GRAN COUPÉ

The visible stitching of the headboard, which can be in fabric or to the pleated processing of the fabric or the leather of the head, longer than the body of the bed.

Regale rhymes with comfort in Ducale Gran Coupé: both versions are available with or without storage box.

DC



DUCALE HIGH

A unique shape to play with: his fabric cover is completely removable, so it can be changed according to mood and night area's colors. Regale rhymes with comfort in Ducale High: both versions are available with or without storage box.

DU



DUCALE

A unique shape to play with: his fabric cover is completely removable, so it can be changed according to mood and night area's colors. Regale rhymes with comfort in Ducale: both versions are available with or without storage box.

DU



CAMPOMARZIO BED

Elegant as the Rome district from which it takes its name. Campo Marzio also boasts an extraordinary essentiality that makes it a perfect match for different night solutions.

CP

RIOMAGGIORE

Elegant and extravagant, the Riomaggiore bed is bold and dynamic. Slanted side bands constitute the distinguishing feature of the product.



RIO



NIGHT TABLES

| | |
|----------------------|-------|
| Lingotto | p.122 |
| Cassiodoro | p.123 |
| Solferino | p.123 |
| Don Rodrigo | p.124 |
| Levanzo | p.125 |
| Garda | p.125 |
| Levanzo Chest Drawer | p.126 |

LINGOTTO

Part of the collection of dual face unconventional and elegant containers with unique personality. A uniqueness that arises from the play of color and material combinations and the superimposition of the various modules.



BT



CASSIODORO

Minimal also to the touch thanks to its smooth and clean lines.

Cassiodoro is a super simple bedside table with two drawers, customizable with fanciful details.

CBT



SOLFERINO

Original and with a vaguely retro style bedside table. Solferino is designed to adapt to ambiances having a brilliant soul, to bring color and a touch of fantasy.

SBT



DON RODRIGO

Surprising, eclectic and charismatic.
The originality of Don Rodrigo
begins with its unexpected
cylindrical shape and continues with
the elegant quilted leather cover.

DBT



LEVANZO

Sinuous and elegant, the Levanzo collection has a retrò and sophisticated taste. The rounded shapes are accompanied by the particular processing of the structure.

LZ



GARDA

The mood is elegant and original: the ribbed profile is its distinctive trait, as are the particularly metal legs that contrast with the larger, more welcoming structure. A hypnotic motif enhancing the beauty of wood and the purity of its essence.

GBT

LEVANZO CHEST DRAWER

Sinuous and elegant, the Levanzo collection – composed from cupboard, sideboard, chest of drawers and night table – has a retrò and sophisticated taste.







LAMPS

| | | | |
|-------------------|-------|----------------------------|-------|
| 950 S | p.130 | Eva | p.136 |
| 807 S | p.111 | Style 8 | p.136 |
| 901 S | p.131 | Phyton | p.136 |
| Planet S | p.131 | Reve S12 | p.136 |
| Mariposa | p.131 | Jardin De Verre S18 | p.137 |
| Bubbles | p.132 | Jardin De Verre Pendant | p.138 |
| Bricks A | p.132 | Jardin De Verre Table Lamp | p.138 |
| Bricks P | p.132 | Ballroom S4 | p.138 |
| Veneziano S8 | p.132 | Balloton S12 | p.138 |
| Ca' Rezzonico S12 | p.133 | Petalo | p.139 |
| Caracalla S | p.133 | Turandot S | p.139 |
| Imperiale S12 | p.133 | Ouverture S8 | p.139 |
| Imperiale A3 | p.133 | Chopin A | p.139 |
| Coconut | p.134 | | |
| Wired A | p.135 | | |
| Lirica S6 | p.135 | | |
| Samsara P | p.135 | | |



950 S

Available in the following
models:

950 a/11 g/topazio l.30 oro
950 s/42 g/topazio 61 oro



807 S

Available in the following models:

807 s/50 gr.topazio oro
807 s/50 gr.cristallo nik
805 r/260 g/crist.56 oro
807 a/11 gr.topazio oro

807S2HB5



901 S

Available in the following models:

901 s/50 bianco d.69 oro
901 s/50 topazio d.69 oro
901 a/11 topazio oro
901 a/11 bianco oro
901 s doppia d.120 h.225

901S2AD69



PLANET S

Available in the following models:

planet r/25 cristallo 60 nik
planet r/25 topazio 60 nik
planet s/ topazio 60 nik
planet s/ cristallo 60 nik

PLAS3AB060

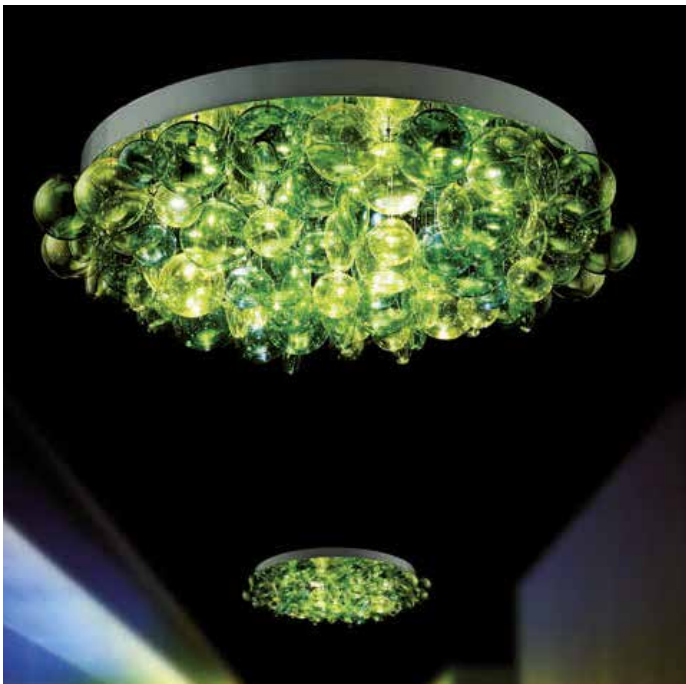


MARIPOSA

Available in the following models:

mariposa s bia/crist.50 nik
mariposa s bia/crist.90 nik

MARS3DA50



BUBBLES

Available in the following models:

bubbles r d.60 multicolor

BUBR3EE60



BRICKS A

Available in the following models:

bricks a bianca shade nero
briks p bianca shade nero

BRKA3ADPP



BRICKS P

Available in the following models:

bricks a bianca shade nero
briks p bianca shade nero

BRKL3ADPP



VENEZIANO S8

Available in the following models:

veneziano s/8 blu/oro
veneziano a/2 cri.oro

VENSONO08



CA' REZZONICO S8

Available in the following models:

ca'rezzonico a/2 cristallo oro paralumi bianco
ca'rezzonico s/12 cristallo oro
ca'rezzonico s/9 cristallo oro

REZA0AA02S



CARACALLA S

Available in the following models:

caracalla s/3 gr/
caracalla t/3 gr/bianco oro
caracalla t/3 gr/oro oro
caracalla s/75 gr/oro oro

CARS0QB75



IMPERIALE S12

Available in the following models:

imperiale a/3 cristallo
imperiale a/3 topazio
imperiale s/12 cristallo
imperiale s/8 topazio

IMPS0AA12



IMPERIALE A3

Available in the following models:

imperiale a/3 cristallo
imperiale a/3 topazio
imperiale s/12 cristallo
imperiale s/8 topazio

IMPA0AA03



COCONUT

Available in the following
models:

coconut p ambra shade bianco

COCP2ABDD



WIRED A

Available in the following models:

wired a cristallo shade bianco
wired p cristallo shade bianco

WIRA3AADD



SAMSARA P

Available in the following models:

samsara p blu shade beige
samsara p rosa shade beige
samsara p nik crist.mac. shade beige

SAMP3V5JJ



LIRICA S6

Available in the following models:

lirica s/6 verde

LIRS3CC06



EVA

Available in the following models:

eva a ambra

EVA00BB02



STYLE S8

Available in the following models:

style s/8 crist.shade bianco
 style s/12 crist.shade bianco
 style a/2 crist.shade bianco

STYS0AA08DD



PHYTON

Available in the following models:

python s/19 vtr oro crist.
 oro
 python s/1 vtr oro crist.oro

PYTS2A086



REVE S12

Available in the following models:

reve s/12 cristallo oro
 shade bianco
 reve s/8 cristallo oro
 shade bianco

REVS0AO08T21

JARDIN DE VERRE S18

Available in the following
models:

jardin de verre s/18 pervinca
farfalle/cloche
jardin de verre s/9 pervinca
farfalle/cloche
jardin de verre a pervinca
farfalle
jardin de verre a pervinca
cloche
jardin de verre a topazio
farfalle
jardin de verre a topazio
riviere
jardin de verre t/3 topazio
rivie-re+farfalla+cloche
jardin de verre s pendant la
riviere
jardin de verre s pendant
farfalle
jardin de verre p alta cloche
jardin de verre p alta la riviere
jardin de verre p bassa
farfalle





JARDIN DE VERRE PENDANT

Available in the following
models:

Check previous page

JARS2RI00



JARDIN DE VERRE TABLE LAMP

Available in the
following models:

Check previous page

JARPOCLAL



BALLROOM S4

Available in the following
models:

ballroom s/4+4 40 luci
bianco/oro
ballroom s/6 round luci
bianco/oro
ballroom s/4+2 30 luci
bianco/oro
ballroom a/15 luci bianco/
oro
ballroom p/15 luci bian-
co/oro

BARA0D01

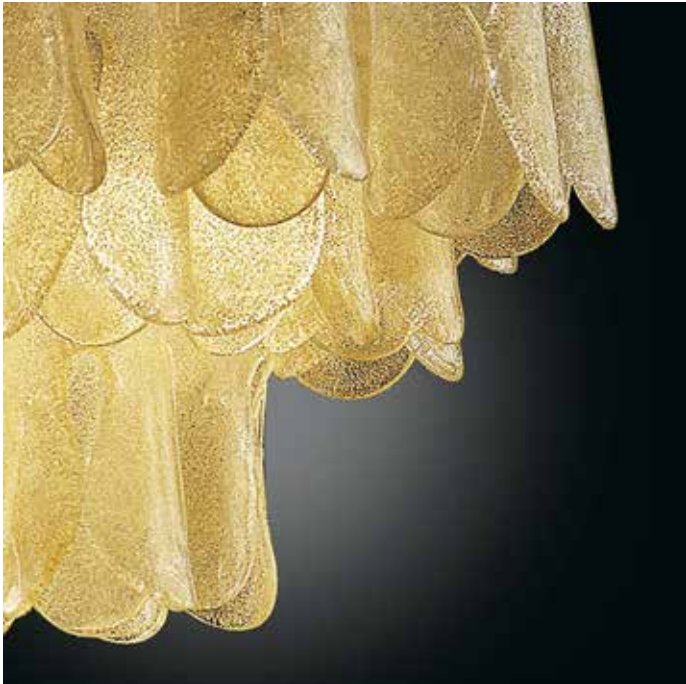


BALLOTON S12

Available in the following
models:

balloton s/12 bianco/cr-
istallo nik
balloton s/12+6 bianco

BAOS3AD12



PETALO

Available in the following models:

petalo r/80 gr.topazio oro

PETR2QB80



TURANDOT S

Available in the following models:

turandot r/75 gr.topazio oro
turandot a/2 gr.topazio oro

TURROQB75



OUVERTURE S8

Available in the following models:

ouverture a/2 cri.oro
ouverture terra cri.oro
ouverture s/6 cri.oro

OUVS0A006



CHOPIN A

Available in the following models:

chopin a oro oro
chopin t oro oro

CHOA2A020







KITCHEN

| | |
|---------------|-------|
| Expo 21 2.1 | p.144 |
| Expo Made 3.1 | p.145 |
| Expo Bar 3.1 | p.146 |
| Expo 31 3.1 | p.147 |









MC
MERONI & COLZANI
MILANO

AmurA
YOU CAN REST

MG

**PAOLA
LENTI**


la murrina
MURRINA

copatlife



MARK'S & GUNTER®

Italian Design Furniture

Calle Porfirio Herrera 21, Piantini, S.D. - Calle Padre Fantino Falco 38, Naco, S.D.