

“Our mission is for the best possible Care in the Adult Family Home for our Elderly”

“It takes a Village”

AFH Compliance

Washington State's Adult Family Homes (AFH) are regulated by the implementation of the state's AFH laws and rules. Nurses play a critically role in promoting patient safety and optimal well-being by monitoring patient health and providing education to their caregivers.

Kent, WA 98031

Office: 253-277-0217

Toll Free: 1 (888) 410- 0943

Fax: 253-277-090

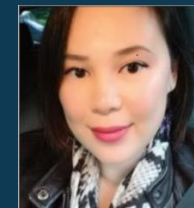
Email:
eldervillagepartner@gmail.com

Website:
eldervillagepartners.com



ELDER VILLAGE PARTNERS

Adult Family Home
Nursing and Consultant
Services



Mary Tu'ifua
Registered Nurse



Elder Village Partners
It Takes a Village

Adult Family Home Compliance Nurse
Phone: 253-277-0217
Fax 253-277-0290



AFH Resources

AFH Council for AFH Providers
Department of Health and Services
Aging and Long-Term Support Administration
Washington State Department of Health
Washington State Department of labor and industries

Local Business AFH Resources:

Ready Meds Pharmacy
Visiting Physicians Associates
Highline College for AFH Administration & Orientation
Soundview Medical
Synkwise
Washington Care Academy
Kindred Home Health
Tax Advice in Kent



Nurse Care Management

Nurses who work with the older adult, their family members, AFH Providers, and Caregivers to develop a care plan which meets the residents care needs as well as emotional, cognitive, social, and safety needs.

Assessments and Preliminary Care plan

The adult family home must obtain a written assessment that contain accurate information about prospective resident's current needs, and preferences before admission in the home. WAC 388-76-10335

Call Direct: 206-886-1611

Negotiated Care Plan Development

The adult family home must use the resident's assessment & preliminary care plan to develop a written negotiated care plan after 30 days of admission. The home must ensure each resident's negotiated care plan includes the list of care and services to be provided, identifying when and how it will be provided and identify who will provide the tasks. The care plan will include preferences and choices with food, daily routine, grooming, and home accommodations. The care plan will also identify care services in case of foreseeable crisis and memory or behavioral issues. WAC 388-76-10355

Delegation by Registered Nurse

The Nurse Delegation Program, under Washington State law, allows nursing assistants working in certain settings to perform certain tasks normally performed by licensed nurse such as administration of prescription medications or blood glucose testing. A registered nurse must teach and supervise the nursing assistant, as well as provide nursing assessments of the patient's condition. WAC 246-84-930



Adult Family Home Council

OF WASHINGTON STATE