

EDGEMONT
1796

3392 Edgemont Farm, North Garden, VA 22959

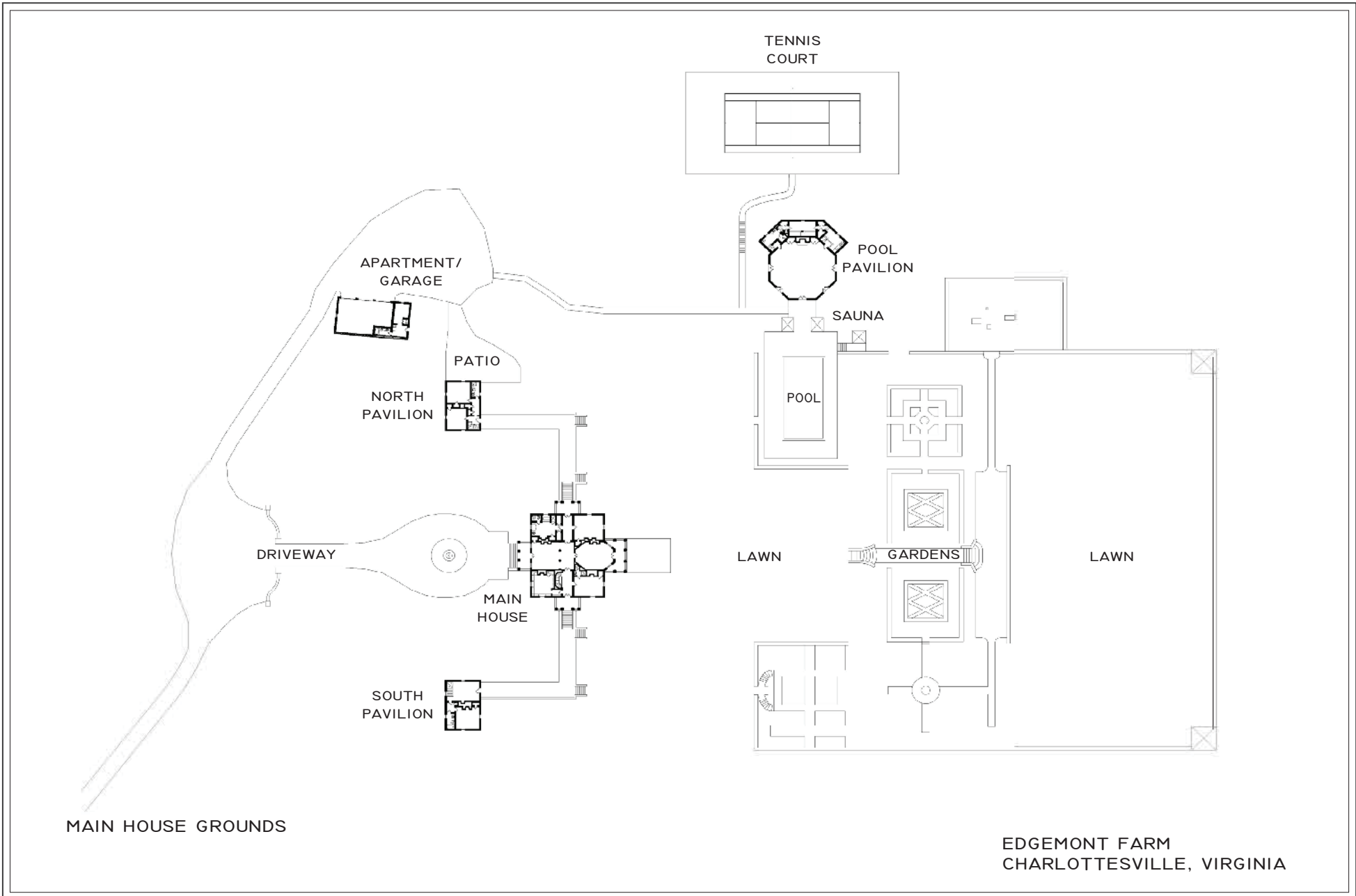
To make an appointment please contact:

STEPHEN T. MCLEAN
McLean Faulconer Inc.

Office: 434-295-1131
Cell: 434-981-1863

smclean@mcleanfaulconer.com

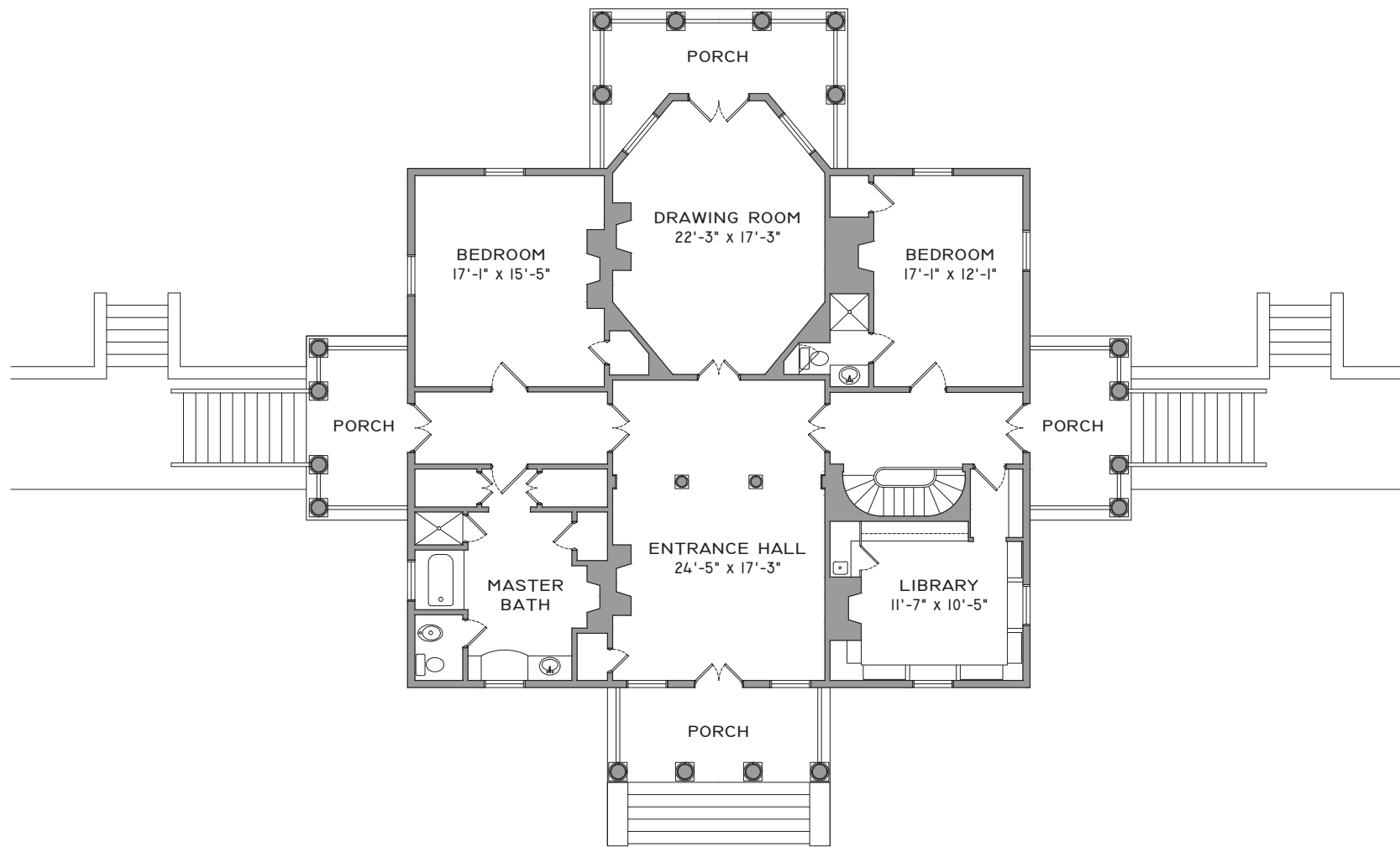
EDGEMONT



MAIN HOUSE GROUNDS

EDGEMONT FARM
CHARLOTTESVILLE, VIRGINIA

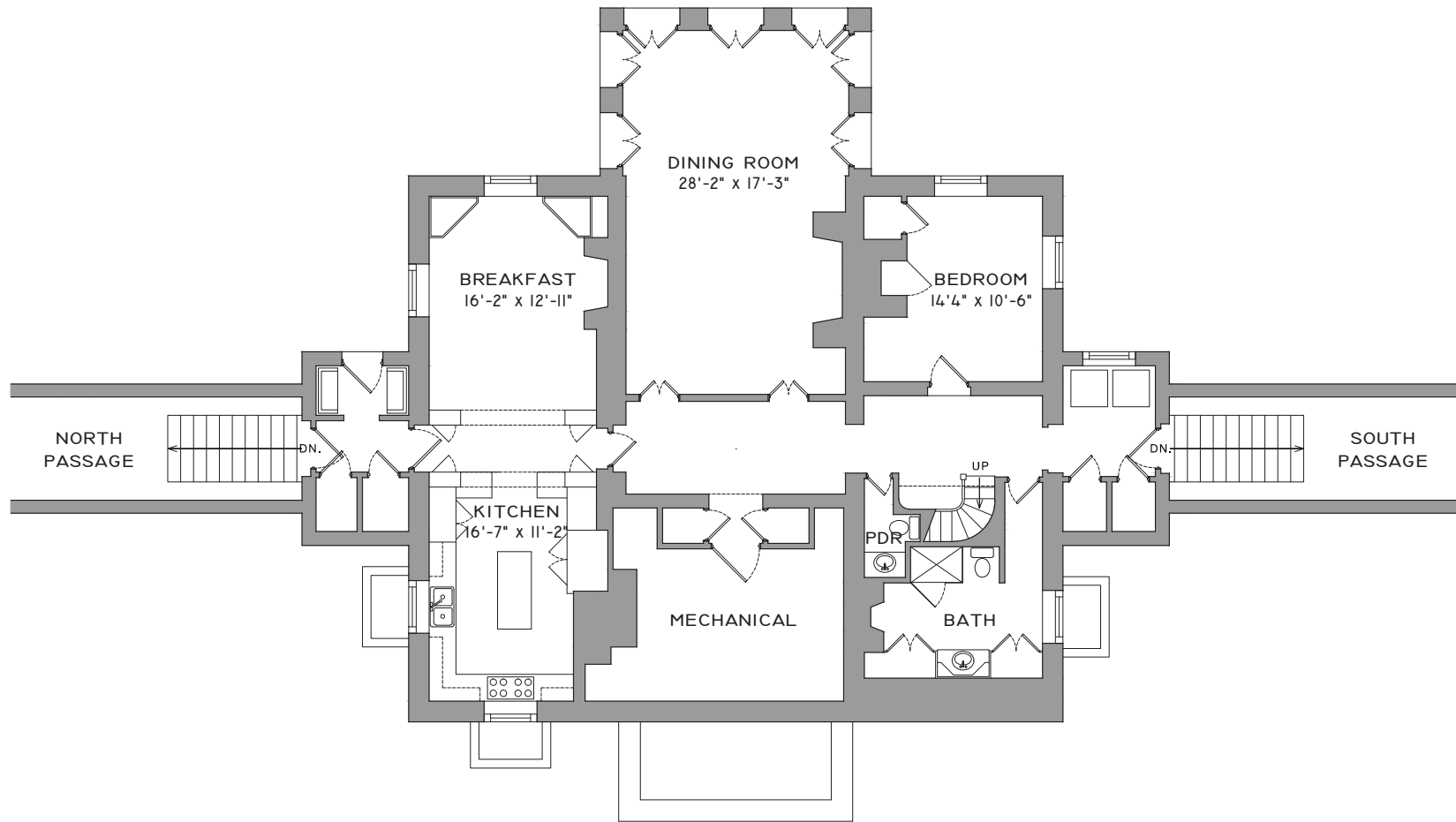
EDGEMONT



MAIN LEVEL PLAN

MAIN HOUSE
EDGEMONT FARM
CHARLOTTESVILLE, VIRGINIA

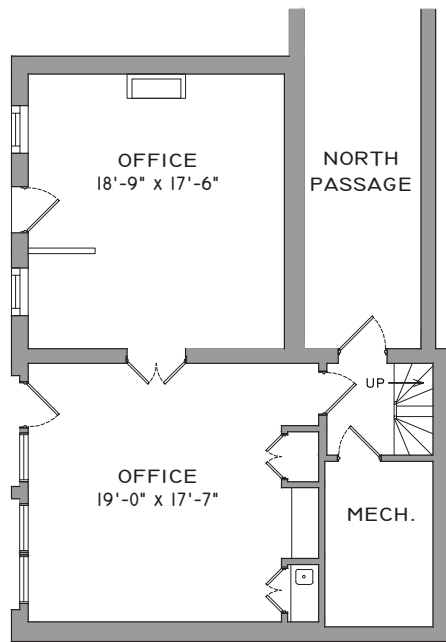
EDGEMONT



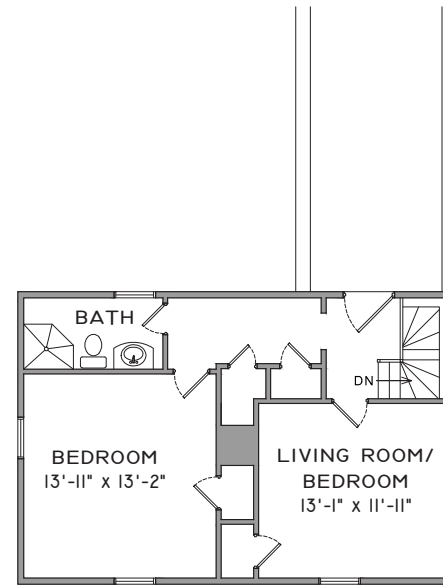
GROUND LEVEL PLAN

MAIN HOUSE
EDGEMONT FARM
CHARLOTTESVILLE, VIRGINIA

EDGEMONT



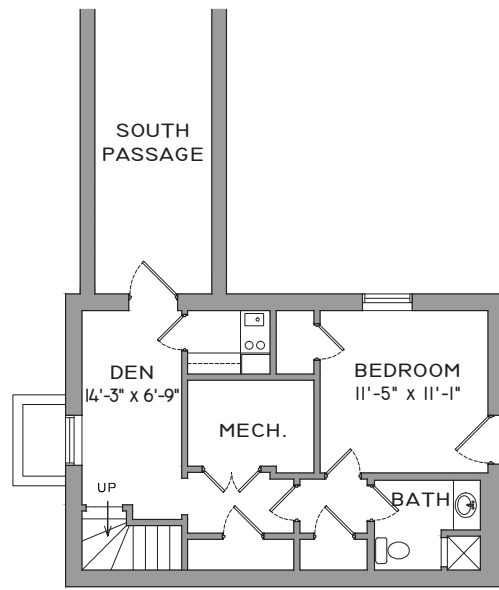
GROUND LEVEL PLAN



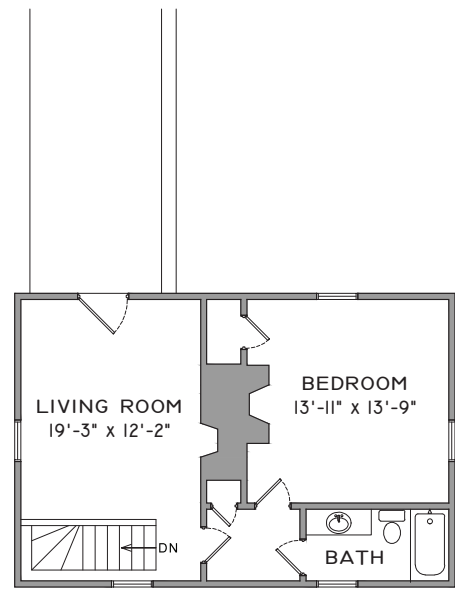
MAIN LEVEL PLAN

NORTH PAVILION
EDGEMONT FARM
CHARLOTTESVILLE, VIRGINIA

EDGEMONT



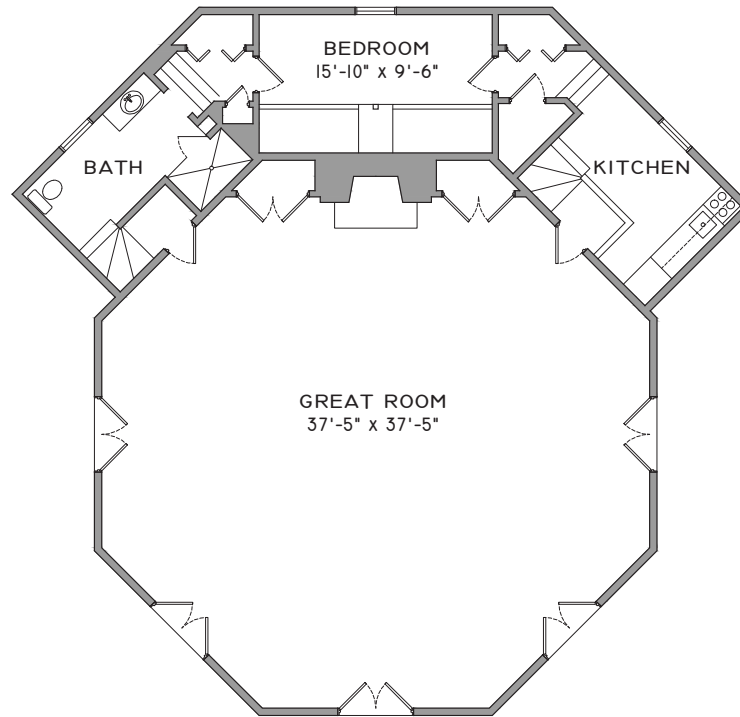
GROUND LEVEL PLAN



MAIN LEVEL PLAN

SOUTH PAVILION
EDGEMONT FARM
CHARLOTTESVILLE, VIRGINIA

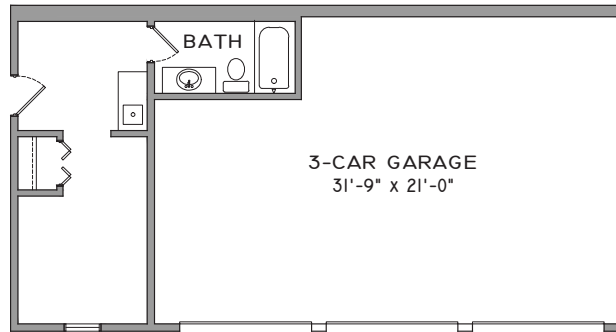
EDGEMONT



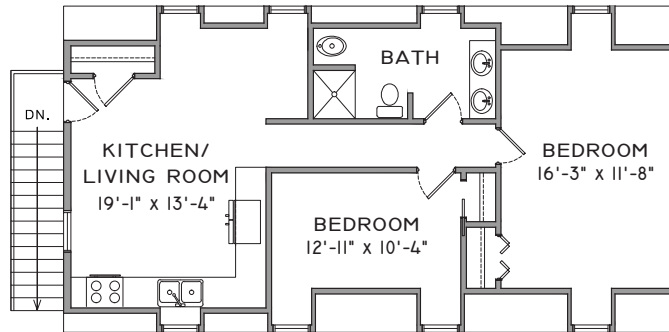
POOL HOUSE PLAN

POOL HOUSE
EDGEMONT FARM
CHARLOTTESVILLE, VIRGINIA

EDGEMONT



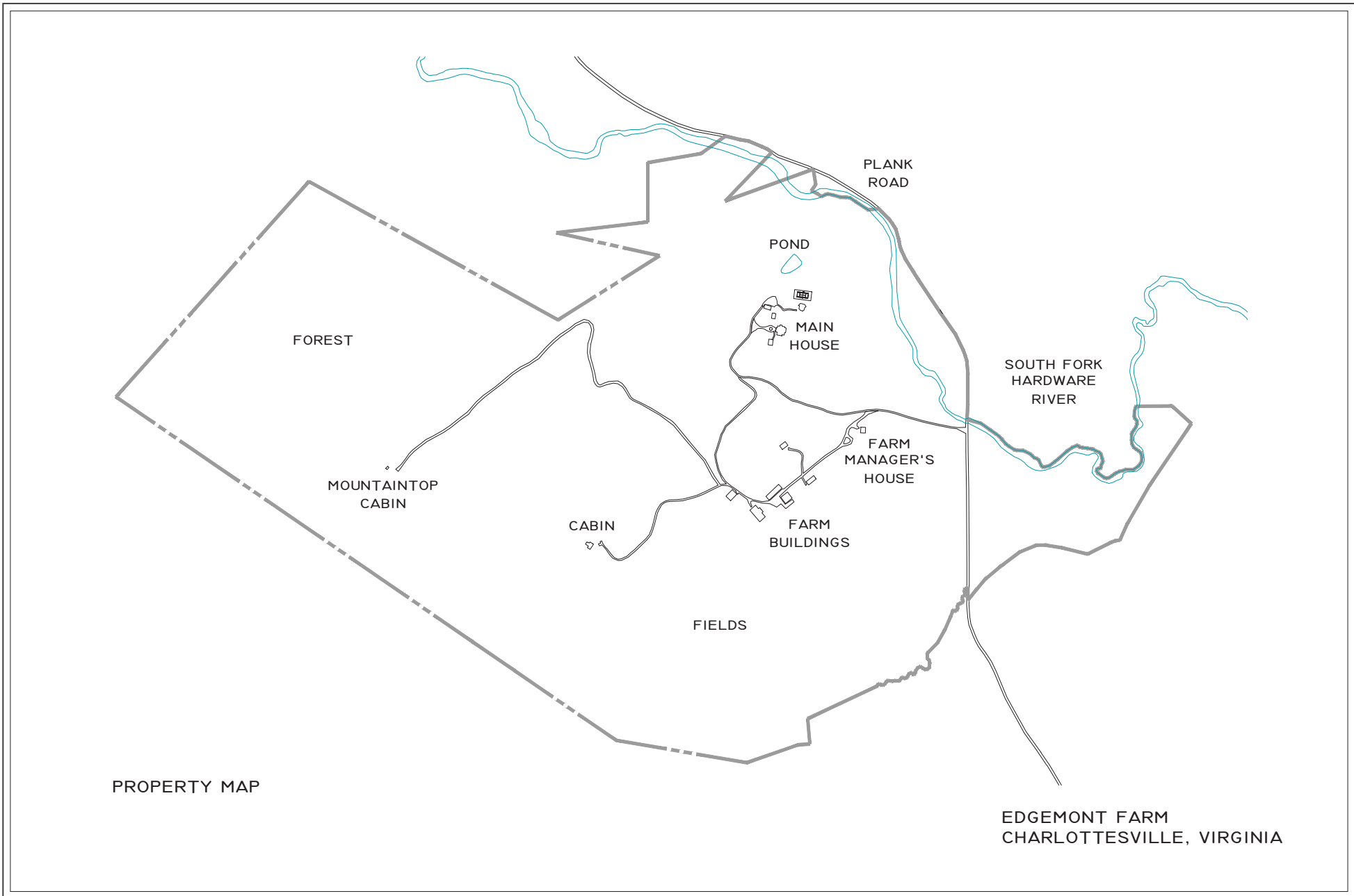
GARAGE PLAN



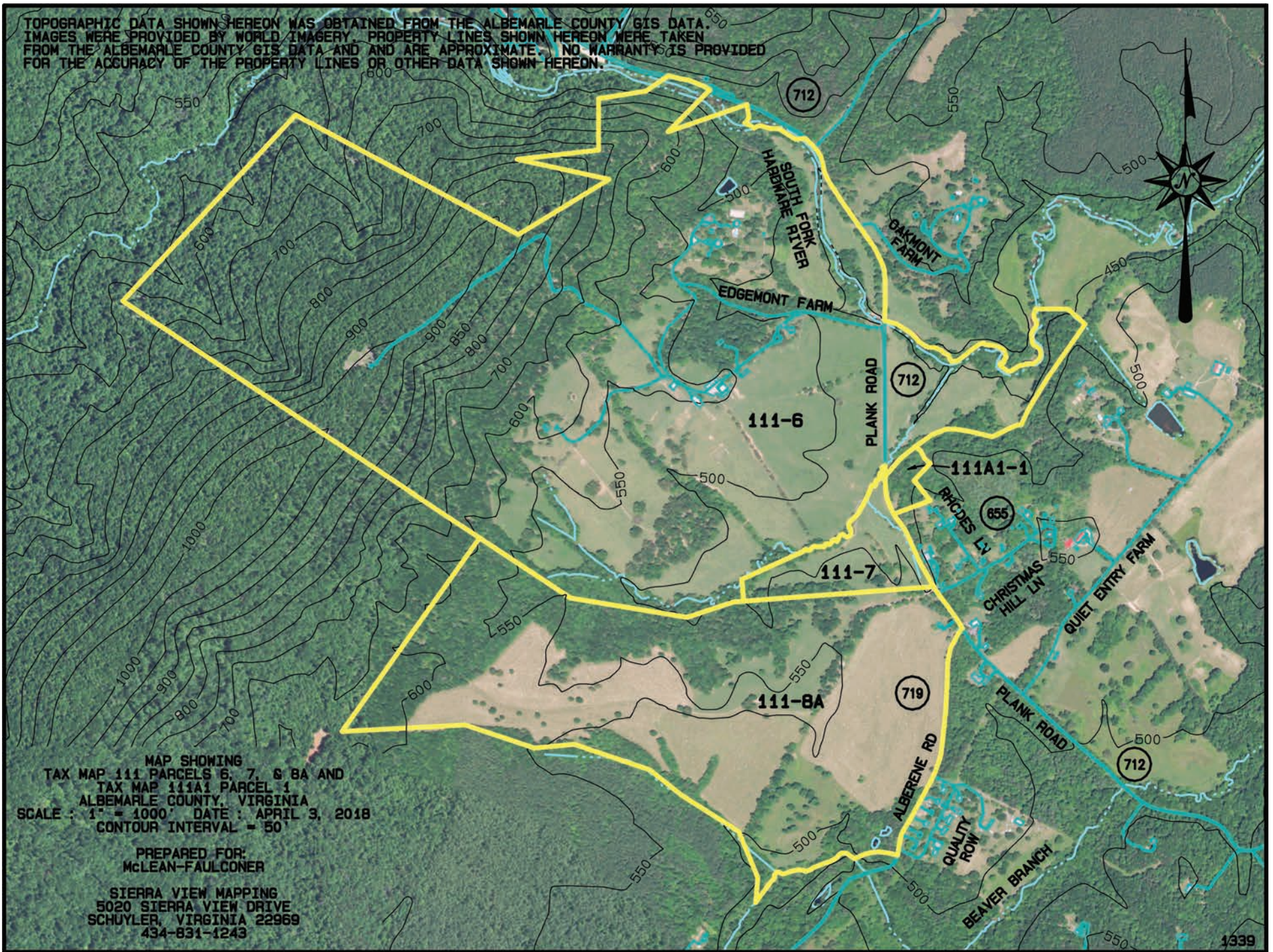
APARTMENT PLAN

GARAGE & APARTMENT
EDGEMONT FARM
CHARLOTTESVILLE, VIRGINIA

EDGEMONT



TOPOGRAPHIC DATA SHOWN HEREON WAS OBTAINED FROM THE ALBEMARLE COUNTY GIS DATA. IMAGES WERE PROVIDED BY WORLD IMAGERY. PROPERTY LINES SHOWN HEREON WERE TAKEN FROM THE ALBEMARLE COUNTY GIS DATA AND ARE APPROXIMATE. NO WARRANTY IS PROVIDED FOR THE ACCURACY OF THE PROPERTY LINES OR OTHER DATA SHOWN HEREON.



MAP SHOWING
TAX MAP 111 PARCELS 6, 7, & 8A AND
TAX MAP 111A1 PARCEL 1
ALBEMARLE COUNTY, VIRGINIA
SCALE : 1" = 1000' DATE : APRIL 3, 2018
CONTOUR INTERVAL = 50'

PREPARED FOR:
McLEAN-FAULCONER

SIERRA VIEW MAPPING
5020 SIERRA VIEW DRIVE
SCHUYLER, VIRGINIA 22969
434-831-1243