



# PRODUCT CATALOG

**2026**

Comprehensive catalog showcasing innovative, high-quality products tailored for diverse customer needs.

[HTTP://MCSBASE.COM](http://MCSBASE.COM)

# About Our Products

**The best work from us for  
your business**

## **Knitted Fabric**

Premium TC, CVC, Polyester, Cotton, and Twist Yarn fabrics, offering versatility for fashion, activewear, and daily essentials.

## **Woven Fabric**

A curated selection of Plain, Twill, Satin, and Jacquard weaves crafted from Cotton, Silk, Wool, and Synthetic fibers - ideal for apparel, uniform, uniforms, and premium fashion.



# Product list

01

## Knit Fabric

Cotton  
Cotton Blend  
Synthetic Fabric

02

## Woven Fabric

Plain  
Twill  
Dobby

03

## Certificate

BCI, RCS  
GRS, OCS

04

## Application

Apparel Solutions  
Industrial Use



A large roll of light-colored knit fabric is being processed by a machine. The fabric is unspooling from a large roll on the left and moving towards the right. The machine has a perforated metal surface at the bottom. The background is a blurred industrial setting.

# Knit fabric

## Main products

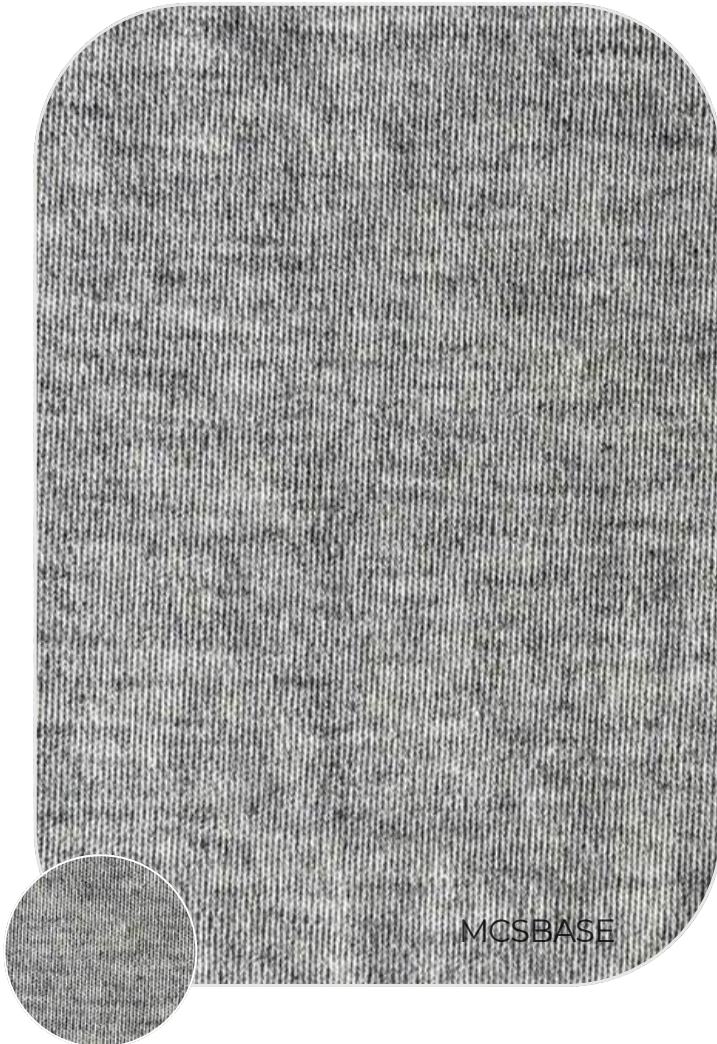
- Cotton
- Cotton Blend
- Synthetic Fabric



Content: 100% Supima Cotton  
Construction: Interlock  
Yarn size: 60S/1  
Weight: 165 Gsm  
Width: 60"



Content: 100% Supima Cotton  
Construction: Interlock  
Yarn size: 60S/1  
Weight: 165 Gsm  
Width: 60"



Content: 100% Supima Cotton  
Construction: Interlock  
Yarn size: 60S/1  
Weight: 165 Gsm  
Width: 60"



Content: 100% Supima Cotton  
Construction: Interlock  
Yarn size: 60S/1  
Weight: 165 Gsm  
Width: 60"



Content: 100% BCI Cotton  
Construction: Mercerized Interlock  
Yarn size: CM 50'S 28GG  
Weight: 210 Gsm  
Width: 60"



Content: 100% BCI Cotton  
Construction: Mercerized Interlock  
Yarn size: CM 50'S 28GG  
Weight: 210 Gsm  
Width: 60"



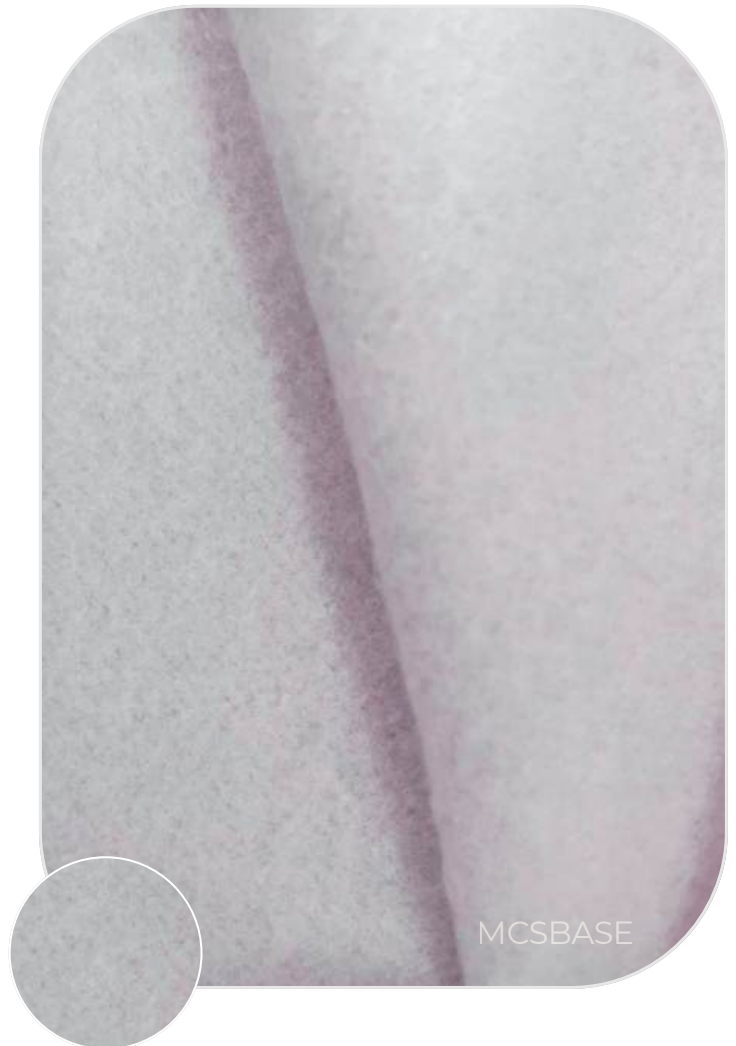
Content: 100% Cotton  
Construction: Fleece  
Yarn size: 32S/1 + 20S/2  
Weight: 360 Gsm  
Width: 69"



Content: 100% Cotton  
Construction: Fleece  
Yarn size: 32S/1 + 20S/2  
Weight: 360 Gsm  
Width: 69"



Content: 80% Cotton 20% Poly  
Construction: Fleece  
Yarn size: CVC 73/27  
Weight: 280 Gsm  
Width: 68"



Content: 80% Cotton 20% Poly  
Construction: Fleece  
Yarn size: CVC 73/27  
Weight: 280 Gsm  
Width: 68"



Content: 100% Cotton  
Construction: French Terry  
Yarn size: 32/1 CPCM/1\*2 + 20/S CD RS  
Weight: 325 Gsm  
Width: 71"



Content: 100% Cotton  
Construction: French Terry  
Yarn size: 32S/1 CPCM/1\*2 + 20/S CD RS  
Weight: 325 Gsm  
Width: 71"



Content: 88% Cotton 12% Poly  
Construction: French Terry  
Yarn size: 32S/1 + 75D/36F + 10S/1  
Weight: 340 Gsm  
Width: 68"



Content: 88% Cotton 12% Poly  
Construction: French Terry  
Yarn size: 32S/1 + 75D/36F + 10S/1  
Weight: 340 Gsm  
Width: 68"



Content: 94% Cotton 6% Span  
Construction: Rib 1x1  
Yarn size: 30S/1 + 30D  
Weight: 270 Gsm  
Width: 68"



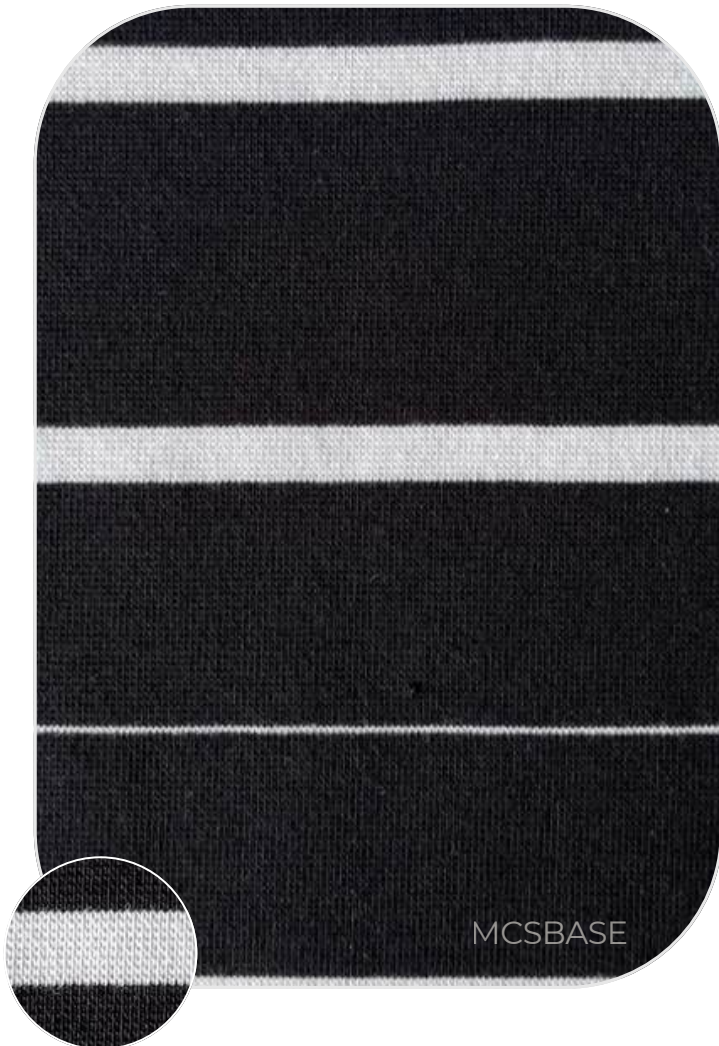
Content: 94% Cotton 6% Span  
Construction: Rib 1x1  
Yarn size: 26S/1 + 40D  
Weight: 280 Gsm  
Width: 75"



Content: 100% Supima Cotton  
Construction: Rib 1x1  
Yarn size: 30S/1  
Weight: 205 Gsm  
Width: 64"



Content: 100% Supima Cotton  
Construction: Rib 1x1  
Yarn size: 30S/1  
Weight: 205 Gsm  
Width: 64"



Content: 97% Cotton 3% Spandex  
Construction: Rib 1x1  
Yarn size: 16S/1 + 105D  
Quality: Yarn - Dyed  
Weight: 290 Gsm  
Width: 60"



Content: 97% Cotton 3% Spandex  
Construction: Rib 1x1  
Yarn size: 16S/1 + 105D  
Quality: Yarn - Dyed  
Weight: 290 Gsm  
Width: 60"



Content: 97% Cotton 3% Span  
Construction: Rib 2x2  
Yarn size: N/A  
Weight: 300 Gsm  
Width: 38"



Content: 97% Cotton 3% Span  
Construction: Rib 2x2  
Yarn size: N/A  
Weight: 300 Gsm  
Width: 38"



Content: 57% Cotton 38% Modal + 5% Span  
Construction: Rib 4x1  
Yarn size: 40S+20D  
Weight: 190 Gsm



Content: 57% Cotton 38% Modal + 5% Span  
Construction: Rib 4x1  
Yarn size: 40S+20D  
Weight: 190 Gsm



Content: 100% Cotton  
Construction: Pique  
Yarn size: 40S/1x2  
Weight: 210 Gsm  
Width: 81"



Content: 100% Cotton  
Construction: Pique  
Yarn size: 40S/1x2  
Weight: 210 Gsm  
Width: 81"



Content: 100% BCI Cotton  
Construction: Single Jersey  
Yarn size: 10'S  
Weight: 365 Gsm  
Width: 64"



Content: 100% BCI Cotton  
Construction: Single Jersey  
Yarn size: 10'S  
Weight: 365 Gsm  
Width: 64"



Content: 70% Cotton, 29% Sorona  
Construction: Single Jersey  
Yarn size: N/A  
Weight: 210 Gsm  
Width: 59"



Content: 70% Cotton, 29% Sorona  
Construction: Single Jersey  
Yarn size: N/A  
Weight: 210 Gsm  
Width: 59"



Content: 95% Rayon 5%Span  
Construction: Single Jersey  
Yarn size: 40S + SP20D  
Weight: 155 Gsm  
Width: 61"



Content: 95% Rayon 5%Span  
Construction: Single Jersey  
Yarn size: 40S + SP20D  
Weight: 155 Gsm  
Width: 61"



Content: 95% Rayon 5%Span  
Construction: Single Jersey  
Yarn size: 30S/1 + 30D  
Weight: 200 Gsm  
Width: 71"



Content: 95% Rayon 5%Span  
Construction: Single Jersey  
Yarn size: 30S/1 + 30D  
Weight: 200 Gsm  
Width: 71"



Content: 73% Rayon, 13% Spandex  
Construction: Stripe  
Yarn size: R50S + SP30D  
Quality: Yarn-Dyed  
Weight: 290 Gsm  
Width: 60"



Content: 73% Rayon, 13% Spandex  
Construction: Stripe  
Yarn size: R50S + SP30D  
Quality: Yarn-Dyed  
Weight: 290 Gsm  
Width: 60"



Content: 52% Recycle Poly, 48% Poly  
Construction: Single Jersey  
Yarn size: 100D x 180D / 165 x129  
Weight: 180 Gsm  
Width: 56"



Content: 73% Rayon, 13% Spandex  
Construction: Single Jersey  
Yarn size: R50S + SP30D  
Weight: 290 Gsm  
Width: 60"



Content: 56% Viscose Rayon Conventional,  
40% Polyester Conventional, 4% Elastane  
Construction: Single Jersey  
Yarn size: CMMO40S/1, SP30D  
Weight: 200 Gsm  
Width: 70"



Content: 56% Viscose Rayon Conventional,  
40% Polyester Conventional, 4% Elastane  
Construction: Single Jersey  
Yarn size: CMMO40S/1, SP30D  
Weight: 200 Gsm  
Width: 70"



Content: 70% Modal 30% Poly  
Construction: Jersey Sand Wash  
Yarn size: N/A  
Weight: 180 Gsm  
Width: 68"



Content: 70% Modal 30% Poly  
Construction: Jersey Sand Wash  
Yarn size: N/A  
Weight: 180 Gsm  
Width: 68"



Content: 49% Rayon 20%Nylon  
26% Poly 5%Span  
Construction: Rib 1x1  
Yarn size: N/A  
Weight: 270 Gsm  
Width: 62"



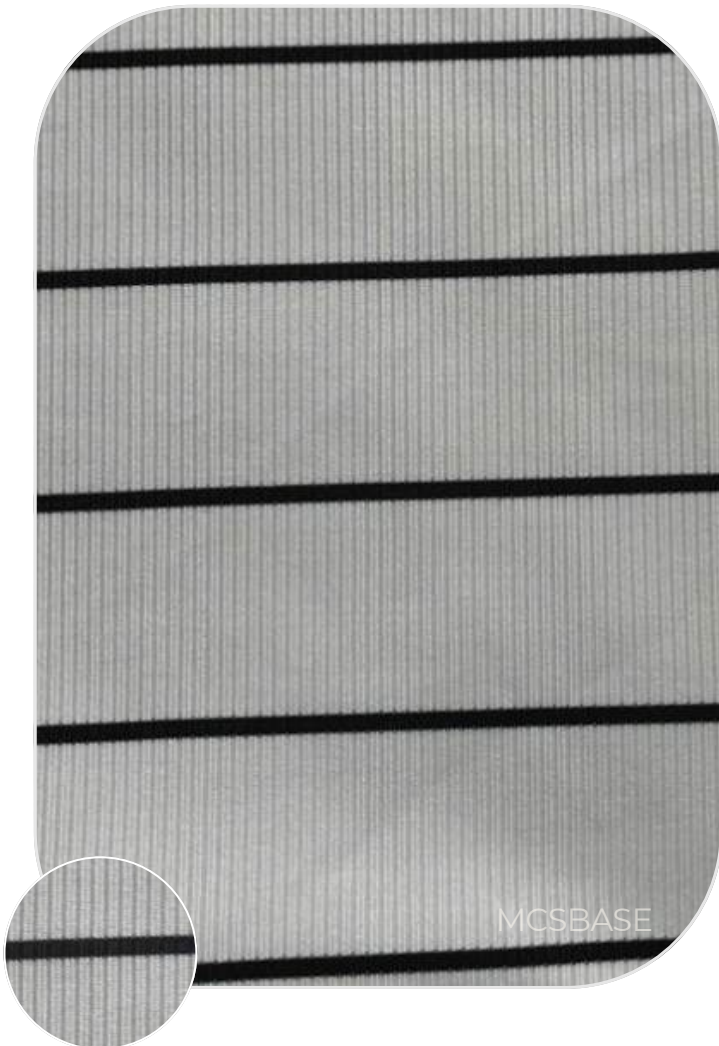
Content: 49% Rayon 20%Nylon  
26% Poly 5%Span  
Construction: Rib 1x1  
Yarn size: N/A  
Weight: 270 Gsm  
Width: 62"



Content: 95% Rayon 5% Span  
Construction: Rib 2x2 Brushed  
Yarn size: 30'S/R 2x2 + 40DSP  
Weight: 195 Gsm  
Width: 57"



Content: 95% Rayon 5% Span  
Construction: Rib 2x2 Brushed  
Yarn size: 30'S/R 2x2 + 40DSP  
Weight: 195 Gsm  
Width: 57"



Content: 95% Poly 5% Span  
Construction: Rib 2x2  
Yarn size: 100D/144F + 30DSP  
Weight: 200 Gsm  
Width: 62"



Content: 100% Poly  
Construction: Pointelle Rib  
Yarn size: 30'S/P (Ring)  
Weight: 130 Gsm  
Width: 60"



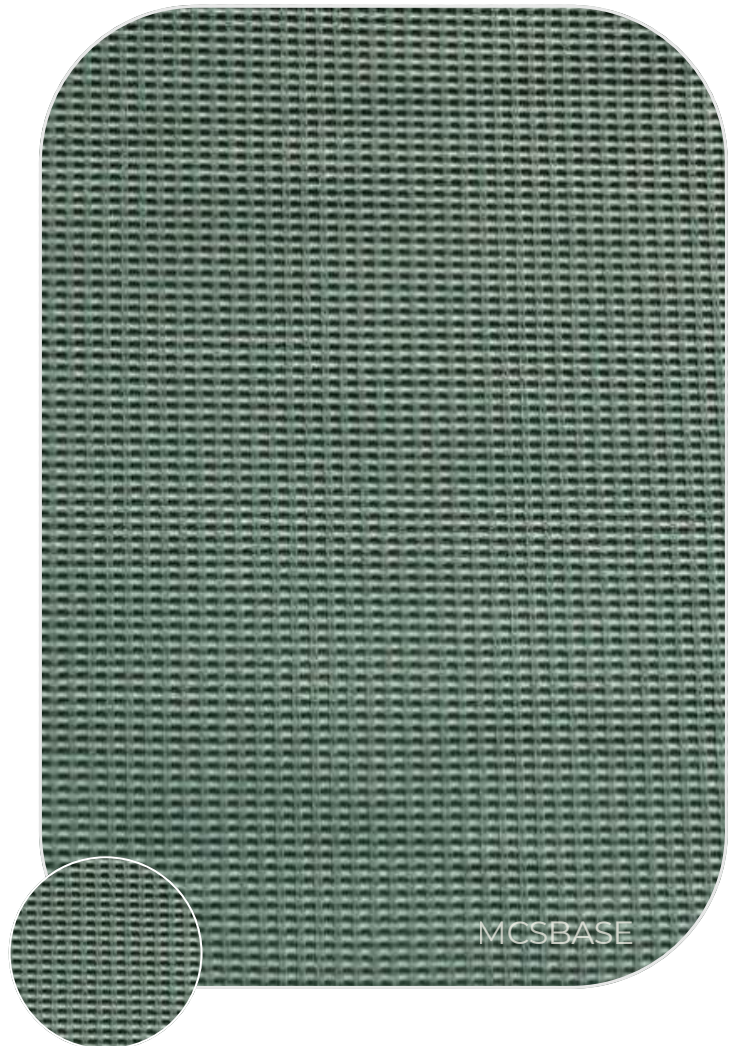
Content: 65% Modal 27% Poly 8% Span  
Construction: Waffle  
Yarn size: 30'S M/P70/30 + 40DSP  
Weight: 250 Gsm  
Width: 60"



Content: 65% Modal 27% Poly 8% Span  
Construction: Waffle  
Yarn size: 30'S M/P70/30 + 40DSP  
Weight: 250 Gsm  
Width: 60"



Content: 95% Poly 5% Span  
Construction: Waffle  
Yarn size: N/A  
Weight: 220 Gsm  
Width: 67"



Content: 95% Poly 5% Span  
Construction: Waffle  
Yarn size: N/A  
Weight: 220 Gsm  
Width: 67"



Content: 95% Poly 5% Span  
Construction: Mesh  
Yarn size: 75D + 75D/ 72F + 20DSP  
Weight: 145 Gsm  
Width: 64"



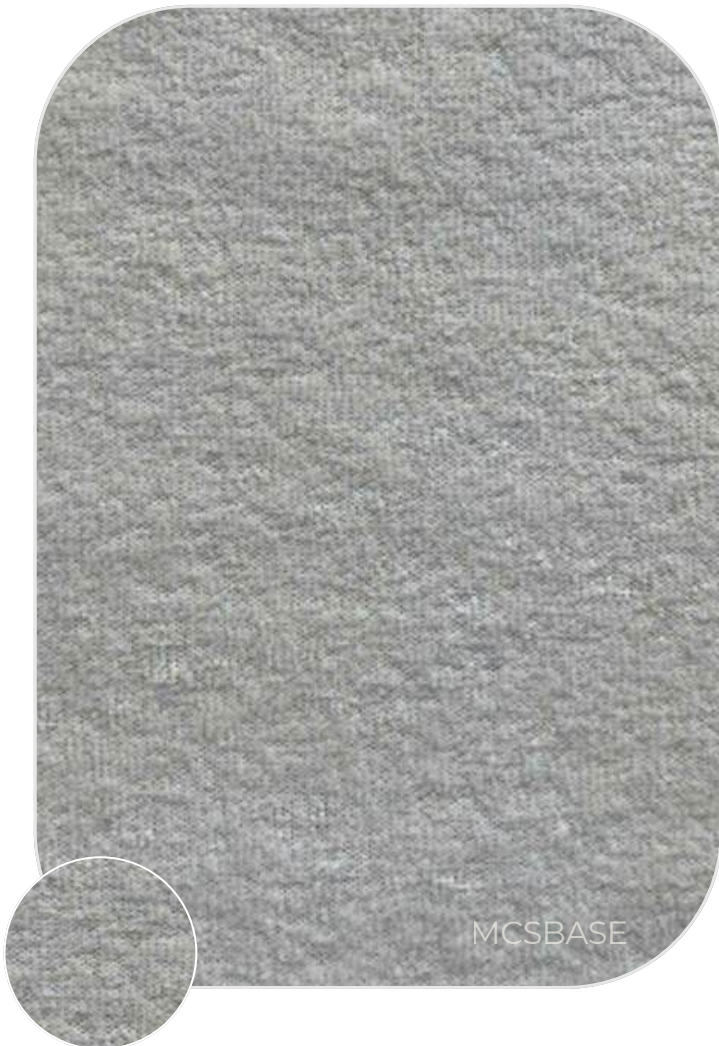
Content: 95% Poly 5% Span  
Construction: Mesh  
Yarn size: 75D + 75D/ 72F + 20DSP  
Weight: 145 Gsm  
Width: 64"



Content: 100% Poly  
Construction: Mesh  
Yarn size: 75D + 50D (POLY/SORONA 60/40)  
Weight: 165 Gsm  
Width: 63"



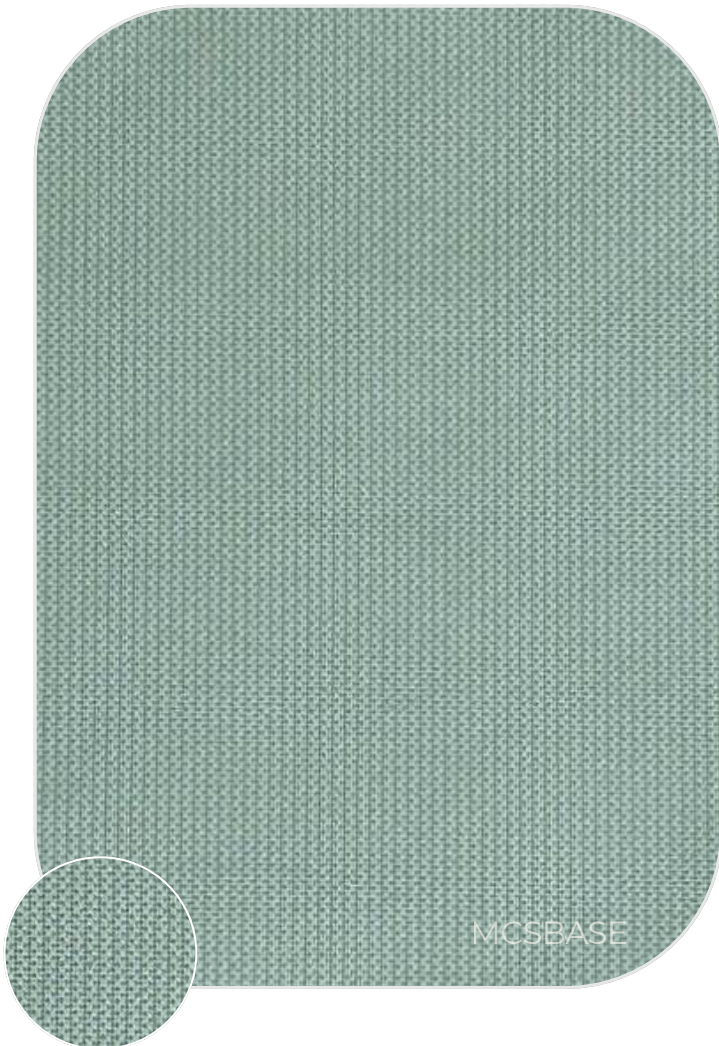
Content: 100% Poly  
Construction: Mesh  
Yarn size: 75D + 50D (POLY/SORONA 60/40)  
Weight: 165 Gsm  
Width: 63"



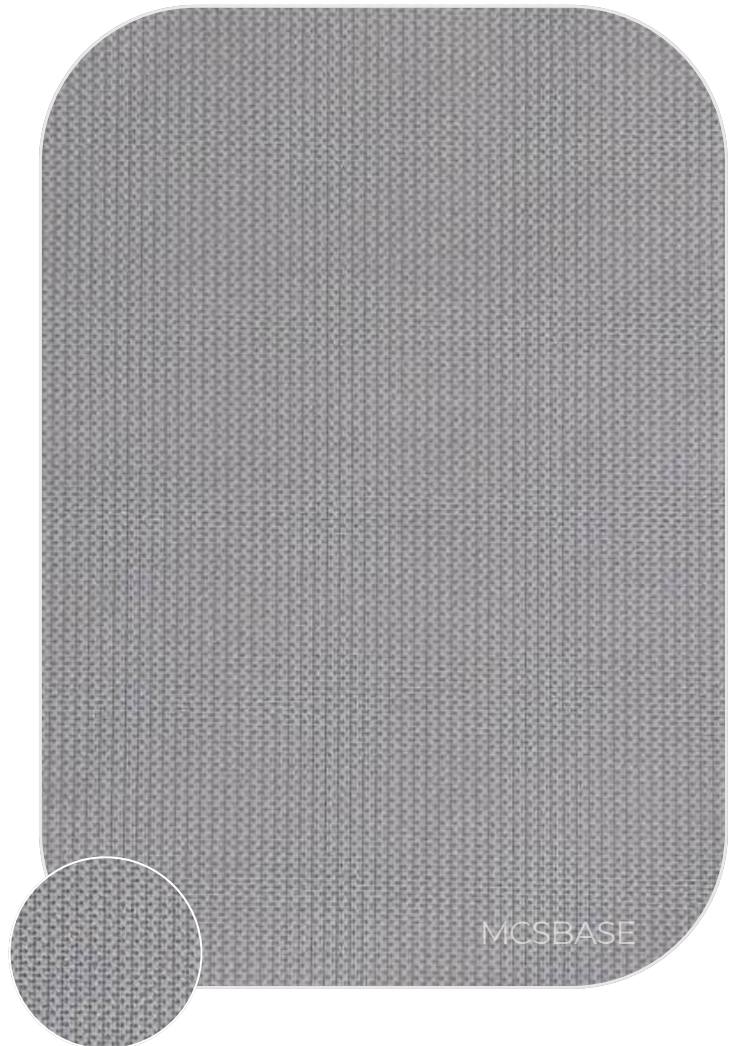
Content: 72% Poly 28% Rayon  
Construction: Teddy - Brush  
Yarn size: N/A  
Weight: 200 Gsm  
Width: 76"



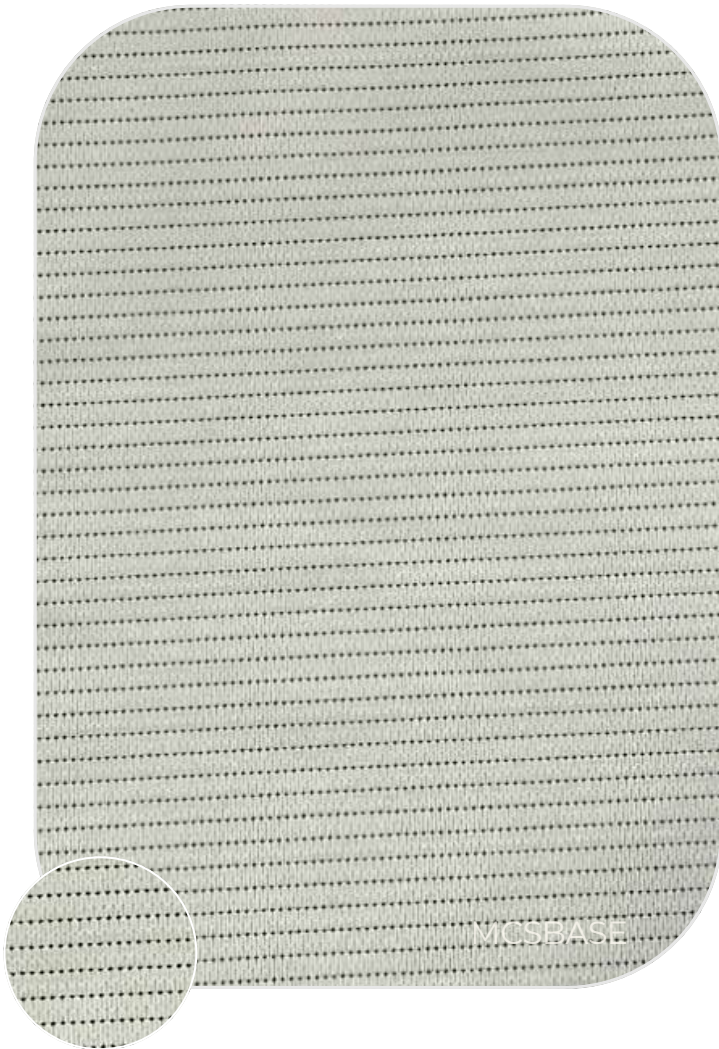
Content: 72% Poly 28% Rayon  
Construction: Teddy - Brush  
Yarn size: N/A  
Weight: 200 Gsm  
Width: 76"



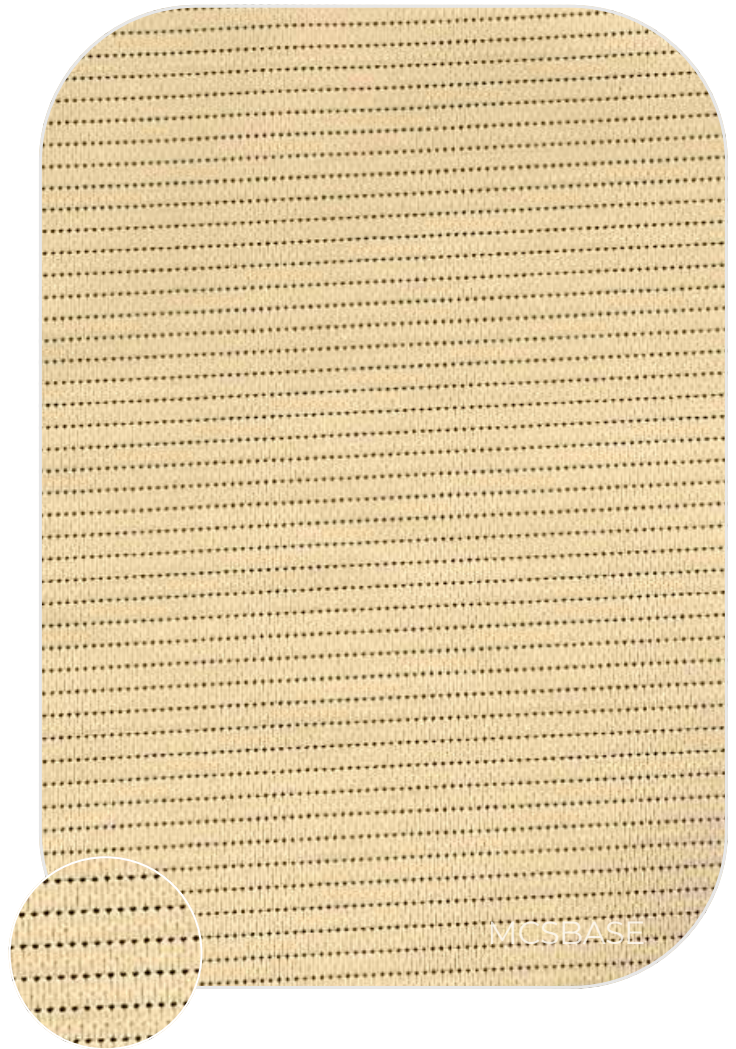
Content: 53% Recycled Poly 29%  
Nylon 18% Span  
Construction: Dobby  
Yarn size: N/A  
Weight: 135 Gsm  
Width: 62"



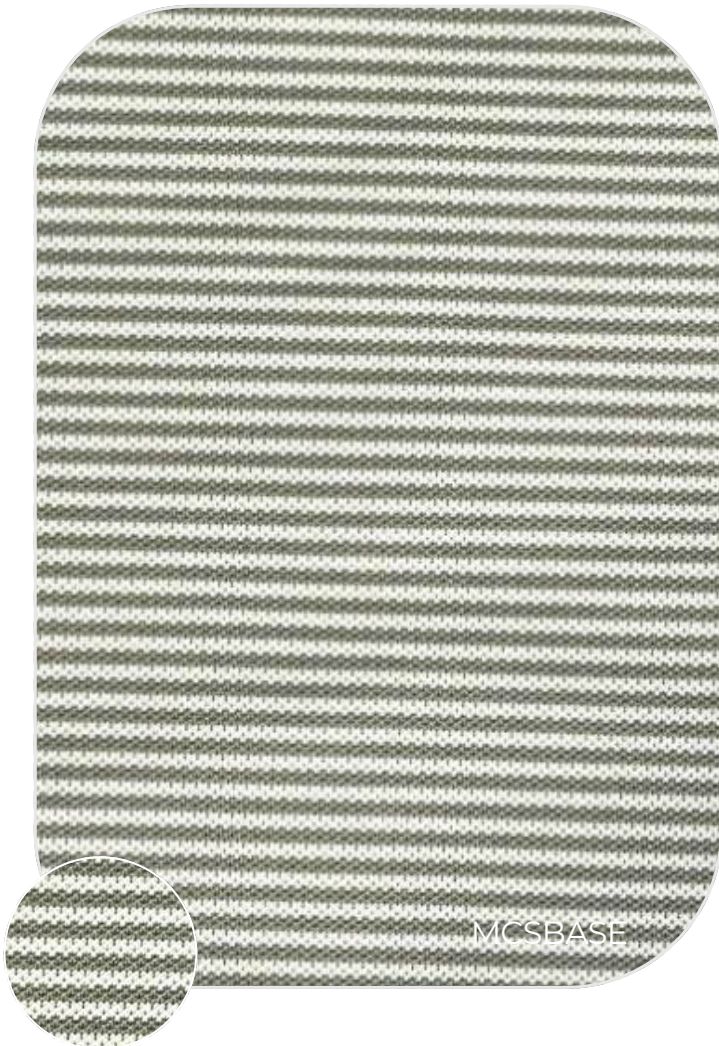
Content: 53% Recycled Poly 29%  
Nylon 18% Span  
Construction: Dobby  
Yarn size: N/A  
Weight: 135 Gsm  
Width: 62"



Content: 86% Recycled Poly 14% Span  
Construction: Dobby  
Yarn size: N/A  
Weight: 174 Gsm  
Width: 56"



Content: 86% Recycled Poly 14% Span  
Construction: Dobby  
Yarn size: N/A  
Weight: 174 Gsm  
Width: 56"



Content: 50% Poly Recycled 46% Poly  
4% Spandex  
Construction: Pique  
Yarn size: N/A  
Weight: 222 Gsm  
Width: 66"



Content: 50% Poly Recycled 46% Poly  
4% Spandex  
Construction: Pique  
Yarn size: N/A  
Weight: 222 Gsm  
Width: 66"



Content: 100% Poly  
Construction: Jacquard  
Yarn size: N/A  
Weight: 165 Gsm  
Width: 64"



Content: 97% Poly 3% Span  
Construction: Jacquard  
Yarn size: 40'S/2 P + 50D/20DSP  
Weight: 160 Gsm  
Width: 62"



Content: 95% Cotton 5% Spandex  
Construction: Single Jersey  
Yarn size: 30S/1 + 20D  
Weight: 200 Gsm  
Width: 70"



Content: ECOVERD 96% Rayon, 3% Span  
Construction: Print Jersey  
Yarn size: N/A  
Weight: 200 Gsm  
Width: 175cm



Content: 100% Polyester  
Construction: Jersey  
Yarn size: N/A  
Weight: 146 Gsm  
Width: 68"



Content: 54% Cotton, 46% Recycled Poly  
Construction: Fleece  
Yarn size: 30S/1 JCVC 60/40CM COMPACT,  
REPOLY 50D/36DT REPOLY 16S/1 CVC  
60/40CMRING, REPOLY  
Weight: 260 Gsm  
Width: 65"



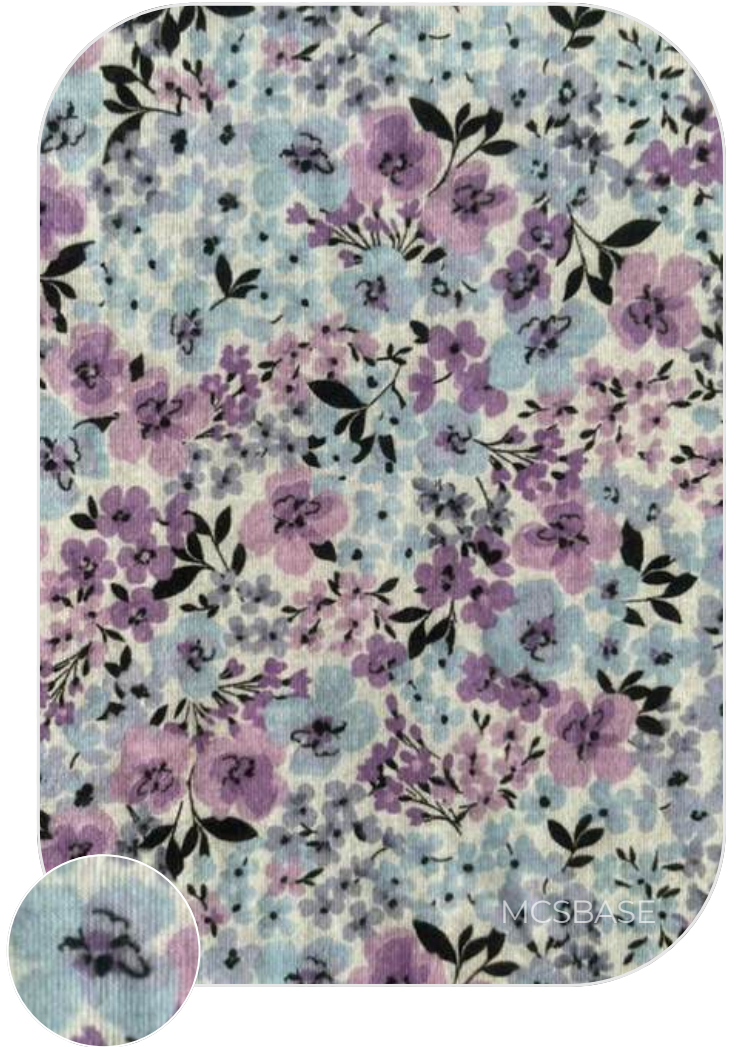
Content: 61% Cotton, 39% Recycled Poly  
 Construction: Fleece  
 Yarn size: 30S/1 JC 75D/36FDY  
 16S/1T/JC65/35  
 Weight: 260 Gsm  
 Width: 65"



Content: 70% Cotton, 30% Recycled Poly  
 Construction: Fleece  
 Yarn size: 32S/1 JC CM Compact Siro 16S/1T  
 Ring, Recycle  
 Weight: 260 Gsm  
 Width: 67"



Content: 95% Poly, 5% Span  
Construction: Print Jersey  
Yarn size: 100D/DTY + 20D SP  
Weight: 160 Gsm  
Width: 66"



Content: 65% Poly, 35% Rayon  
Construction: Jersey Pigment  
Yarn size: TR30'S  
Weight: 150 Gsm  
Width: 66"



| Printing quality reference



| Printing quality reference



| Printing quality reference



| Printing quality reference

A roll of blue and white striped woven fabric, likely a bedsheet or pillowcase, is shown against a dark background. The fabric is rolled up, and the stripes are clearly visible. The text 'Woven fabric' is overlaid on the top left of the image.

# Woven fabric

## Main products

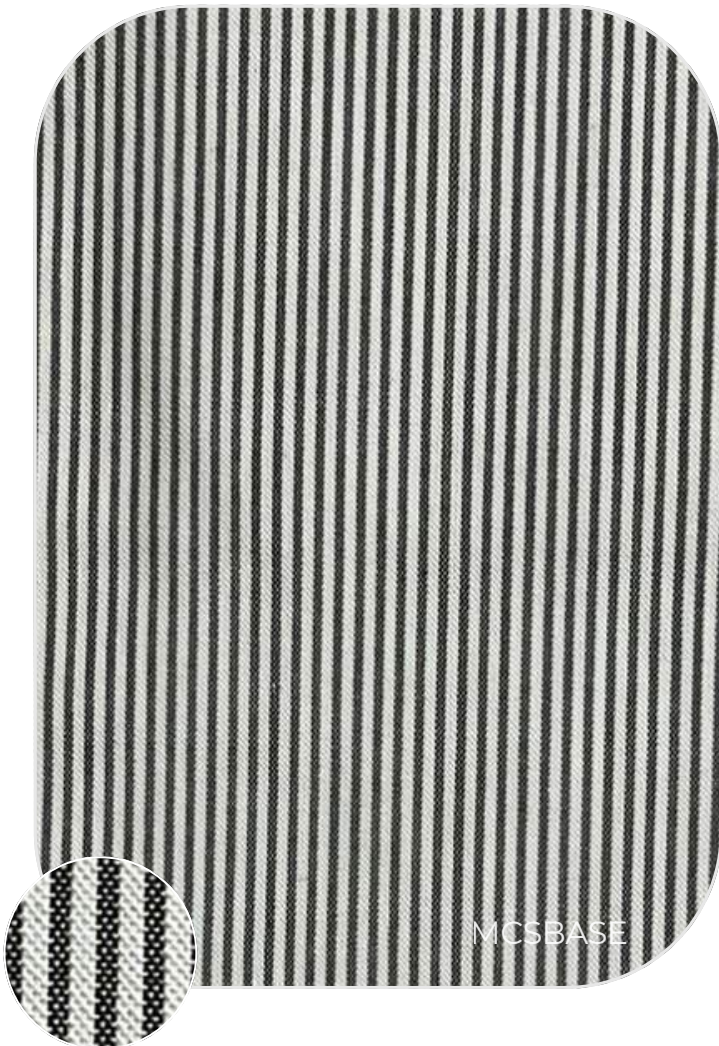
- Plain
- Twill
- Dobby



Content: 100% Cotton  
Construction: 68\*58 CD20\*CD20  
Finish: 2Side Brush  
Weight: 157 g/m<sup>2</sup>  
Width: 58/59



Content: 100% Cotton  
Construction: 100\*76 CM40/1 + CM20/1\*CM80/2  
Finish: Loose  
Weight: 118 g/m<sup>2</sup>  
Width: 57/58



Content: 65% Recycled Poly 35% Cotton  
Construction: 100\*80 RET 45/1 + RET 20/1  
Finish: Loose soft FN  
Weight: 129 g/m<sup>2</sup>  
Width: 57"



Content: 100% Cotton  
Construction: 74\*68 CM 30/1 \* CM 30/1  
Finish: Loose  
Weight: 121 g/m<sup>2</sup>  
Width: 57/58



Content: 65% Recycled Poly 35% Cotton  
Construction: 100\*80 RET 45/1 + RET 20/1  
Finish: Loose soft FN  
Weight: 129 g/m<sup>2</sup>  
Width: 57"



Content: 50% Cotton 50% Tencel  
Construction: 144\*80 LC50\*LC50  
Finish: Regular  
Weight: 108 g/m<sup>2</sup>  
Width: 58/59



Content: 52% Cotton 48% Tencel  
Construction: 130\*92 CM30\*Tencel 21/1  
Finish: Soft  
Weight: 219 g/m<sup>2</sup>  
Width: 58/59"



Content: 52% Cotton 48% Tencel  
Construction: 130\*92 CM30\*Tencel 21/1  
Finish: Soft  
Weight: 219 g/m<sup>2</sup>  
Width: 58/59"



Content: 52% Cotton 48% Tencel  
Construction: 130\*92 CM30\*Tencel 21/1  
Finish: Soft  
Weight: 219 g/m2  
Width: 58/59"

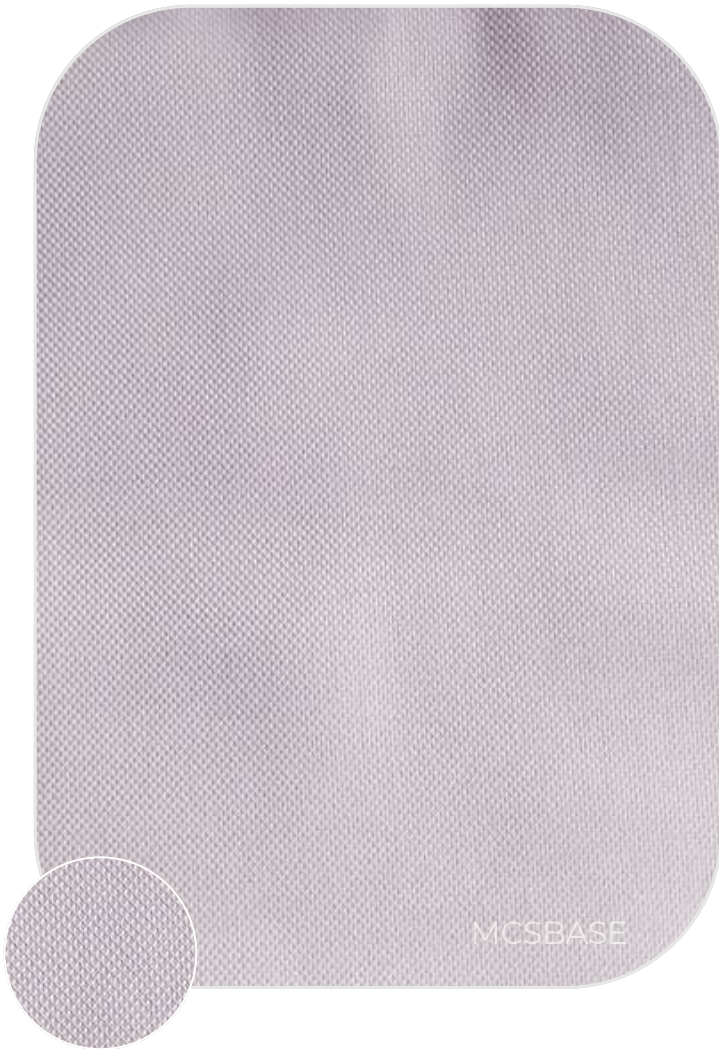
Content: 52% Cotton 48% Tencel  
Construction: 130\*92 CM30\*Tencel 21/1  
Finish: Soft  
Weight: 219 g/m2  
Width: 58/59"



Content: 65% Recycled Poly 35% Cotton  
Construction: 112\*67 TC45 RET\*TC45 RET  
Finish: Soft FN  
Weight: 98 g/m<sup>2</sup>  
Width: 58/59"



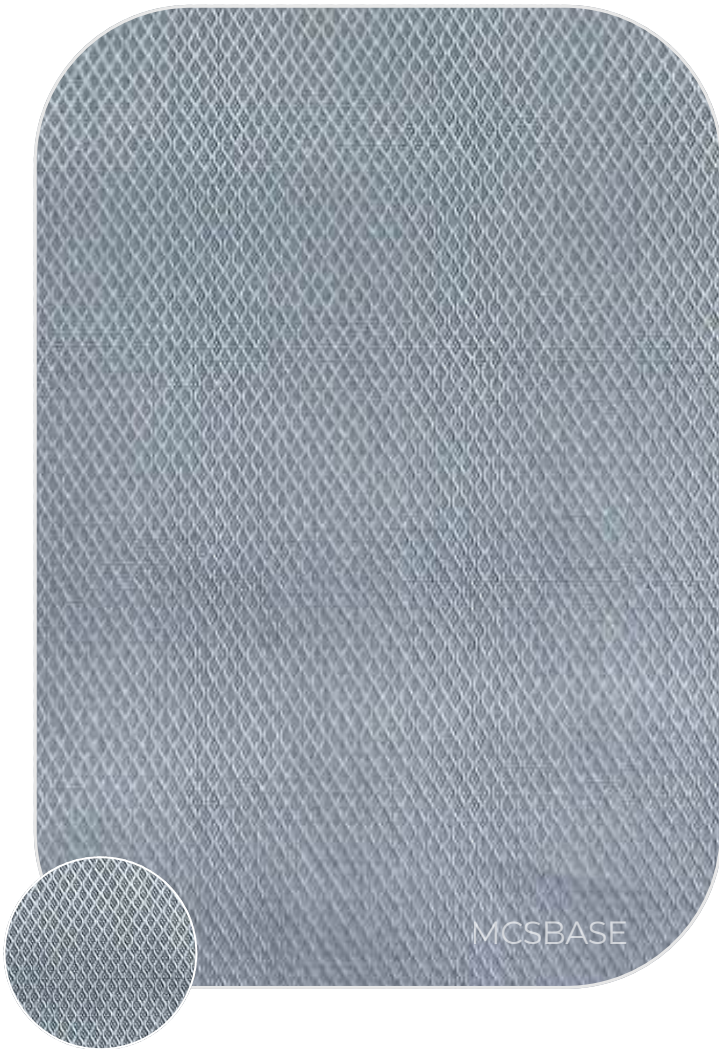
Content: 65% Recycled Poly 35% Cotton  
Construction: 112\*67 TC45 RET\*TC45 RET  
Finish: Soft FN  
Weight: 98 g/m<sup>2</sup>  
Width: 58/59"



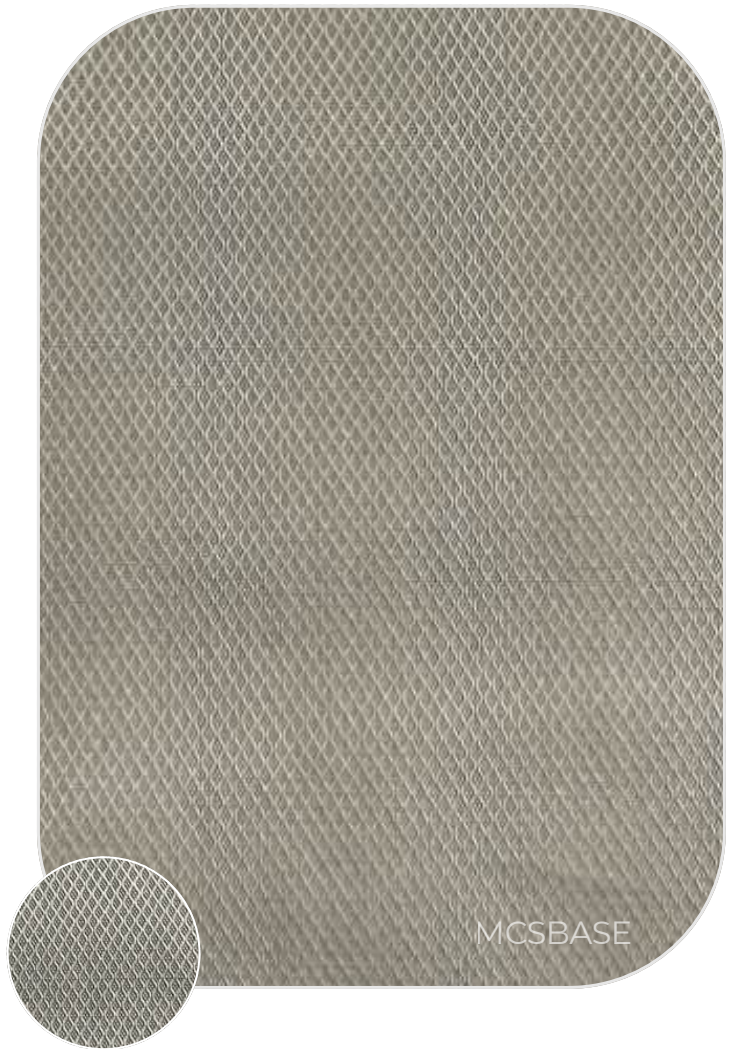
Content: 100% Cotton  
Construction: 144\*94 CM 100/2 \* 2 CM 100/2  
Finish: LA + MC  
Weight: 121 g/m<sup>2</sup>  
Width: 58/59"



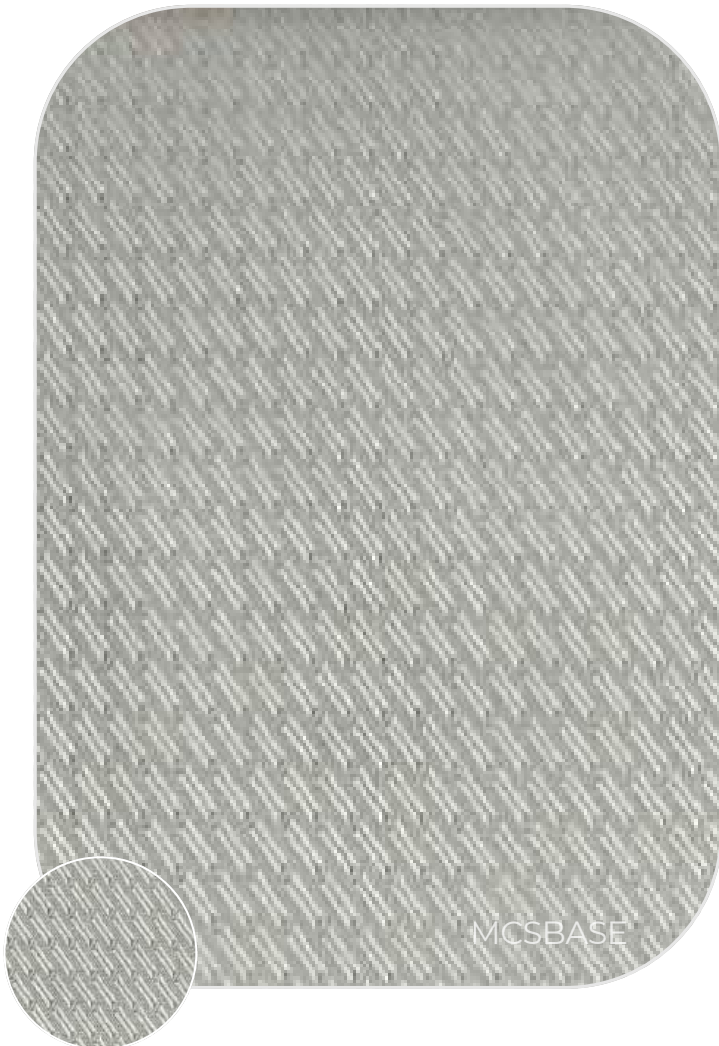
Content: 100% Cotton  
Construction: 144\*94 CM 100/2 \* 2 CM 100/2  
Finish: LA + MC  
Weight: 121 g/m<sup>2</sup>  
Width: 58/59"



Content: 100% Cotton  
Construction: 144\*92 CM50 \* CM50  
Finish: Regular  
Weight: 119 g/m<sup>2</sup>  
Width: 58/59"



Content: 100% Cotton  
Construction: 144\*92 CM50 \* CM50  
Finish: Regular  
Weight: 119 g/m<sup>2</sup>  
Width: 58/59"



Content: 100% Cotton  
Construction: 144\*94 CM100/2\*CM100/2  
Finish: LA + Easy care  
Weight: 120 g/m<sup>2</sup>  
Width: 58/59"



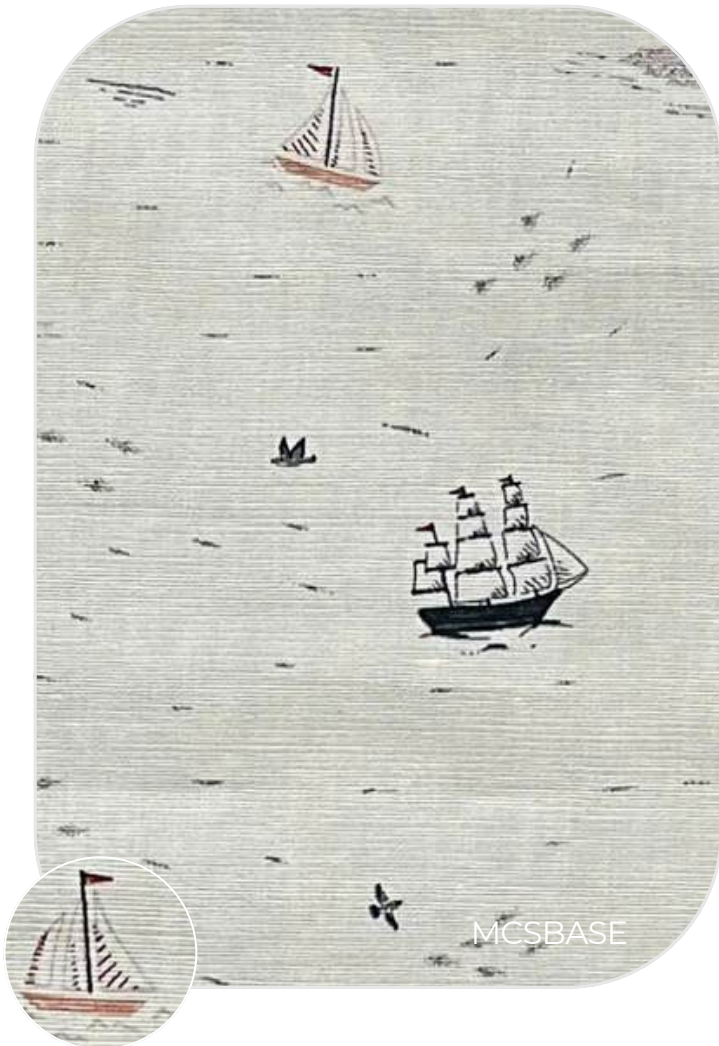
Content: 100% Cotton  
Construction: 144\*94 CM100/2\*CM100/2  
Finish: LA + Easy care  
Weight: 120 g/m<sup>2</sup>  
Width: 58/59"



Content: 97% Polyester + 3% Spandex  
Construction: N/A  
Weight: 105 gsm  
Width: 135cm



Content: 97% Polyester + 3% Spandex  
Construction: N/A  
Weight: 105 gsm  
Width: 135cm



Content: 65% Cotton 35% Linen

Yarn Count: 40\*60+20

Weight: 126 gsm

Width: 56"



Content: 65% Cotton 35% Linen

Yarn Count: 40\*40

Weight: 111 gsm

Width: 56"



Content: 80% Cotton 20% Linen  
Yarn Count: 40+21\*40+21  
Weight: 117 gsm  
Width: 56"



Content: 80% Cotton 20% Linen  
Yarn Count: 40+21\*40+21  
Weight: 117 gsm  
Width: 56"



Content: 100% Cotton  
Yarn Count: 40\*40+10  
Weight: 159 gsm  
Width: 58"



Content: 75% Cotton 25% Linen  
Yarn Count: 21+20\*21+20  
Weight: 117 gsm  
Width: 58"



Content: 100% Cotton  
Yarn Count: 40SX40S / 92X70  
Weight: 98 gsm  
Width: 54"



Content: 100% Cotton  
Yarn Count: 40SX40S / 92X70  
Weight: 98 gsm  
Width: 54"



Content: 100% Cotton  
Yarn Count: 40SX40S / 92X70  
Weight: 98 gsm  
Width: 54"



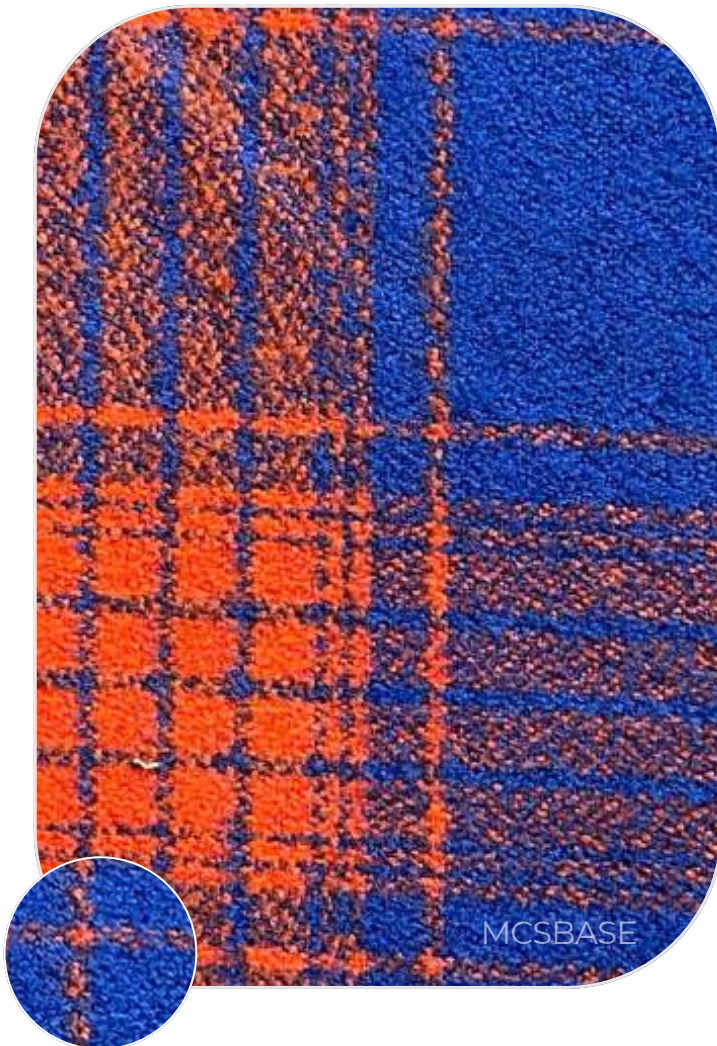
Content: 100% Cotton  
Yarn Count: 40SX40S / 92X70  
Weight: 98 gsm  
Width: 54"



Content: 100% Cotton  
Yarn Count: 2/30S X 2/30S / 68X56  
Weight: 225 gsm  
Width: 62'



Content: 100% Cotton  
Yarn Count: 2/30S X 2/30S / 68X56  
Weight: 225 gsm  
Width: 62'



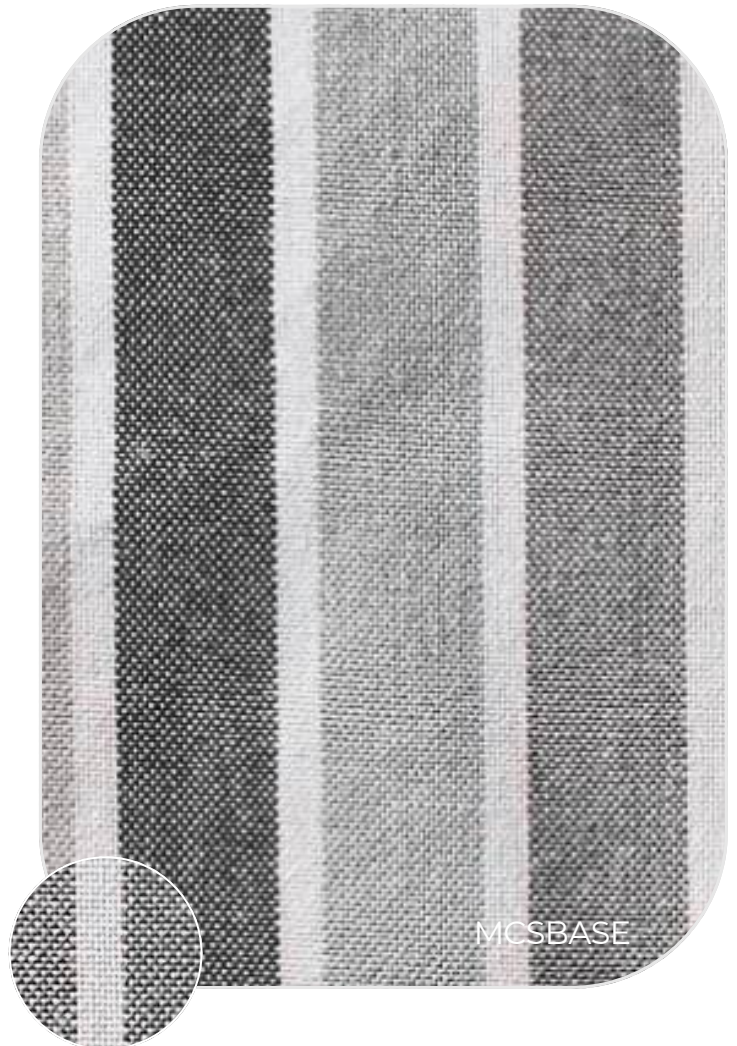
Content: 100% Cotton  
Yarn Count: 2/30S X 2/30S / 68X56  
Weight: 225 gsm  
Width: 62'



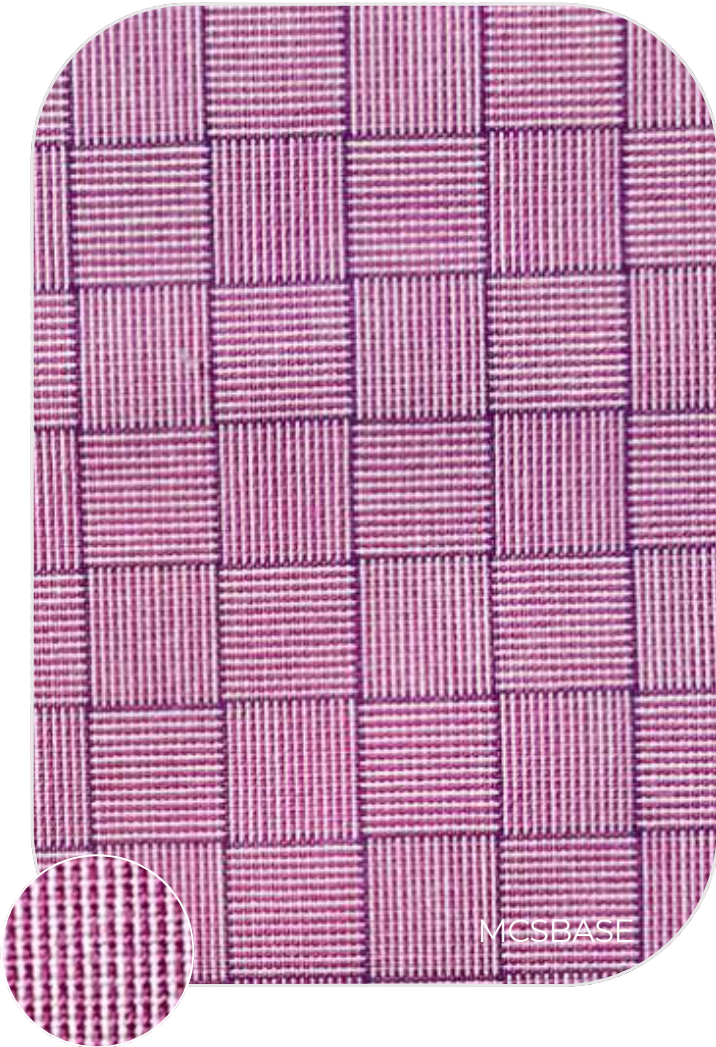
Content: 100% Cotton  
Yarn Count: 2/30S X 2/30S / 68X56  
Weight: 225 gsm  
Width: 62'



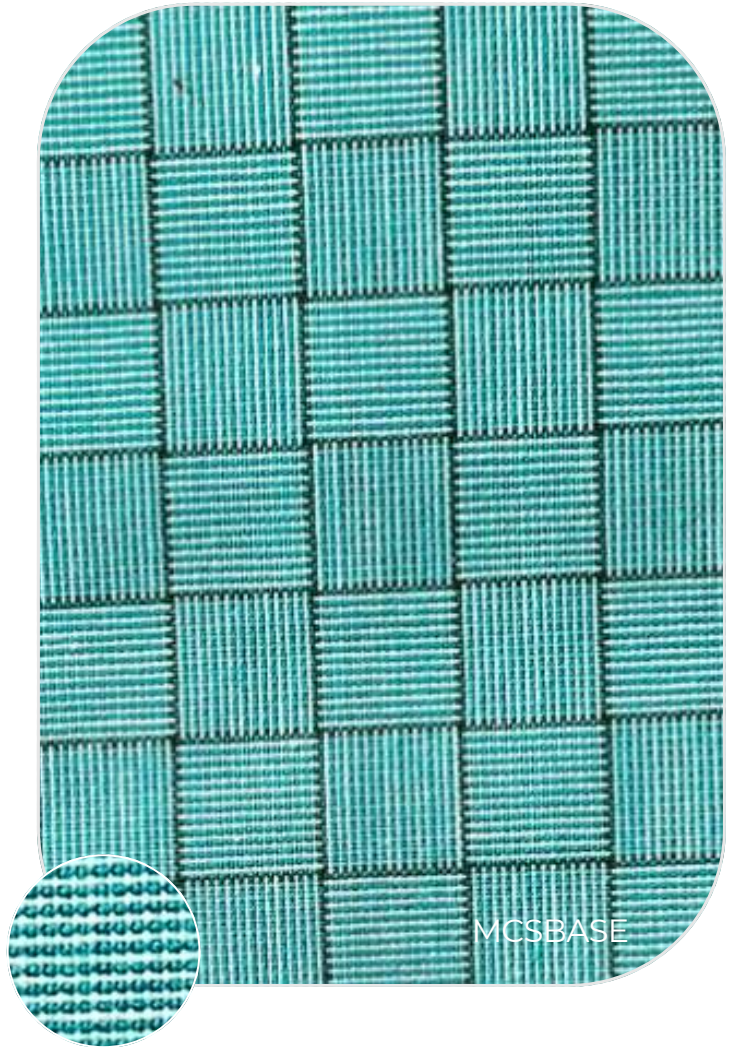
Content: 100% Cotton  
Yarn Count: 2/40S X 2/40S / 70X64  
Weight: 160 gsm  
Width: 62'



Content: 100% Cotton  
Yarn Count: 2/40S X 2/40S / 70X64  
Weight: 160 gsm  
Width: 62'



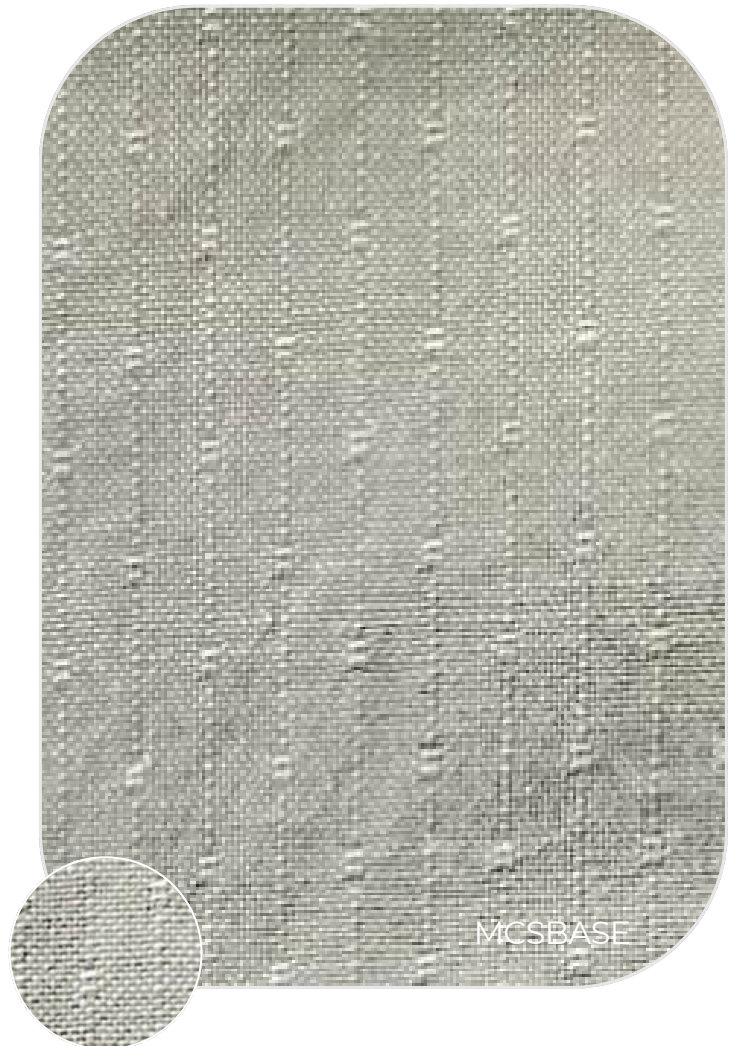
Content: 100% Cotton  
Yarn Count: 2/40S X 2/40S / 70X64  
Weight: 160 gsm  
Width: 62'



Content: 100% Cotton  
Yarn Count: 2/40S X 2/40S / 70X64  
Weight: 160 gsm  
Width: 62'



Content: 100% Cotton  
Yarn Count: 2/40S X 20S / 64X56  
Weight: 145 gsm  
Width: 62'



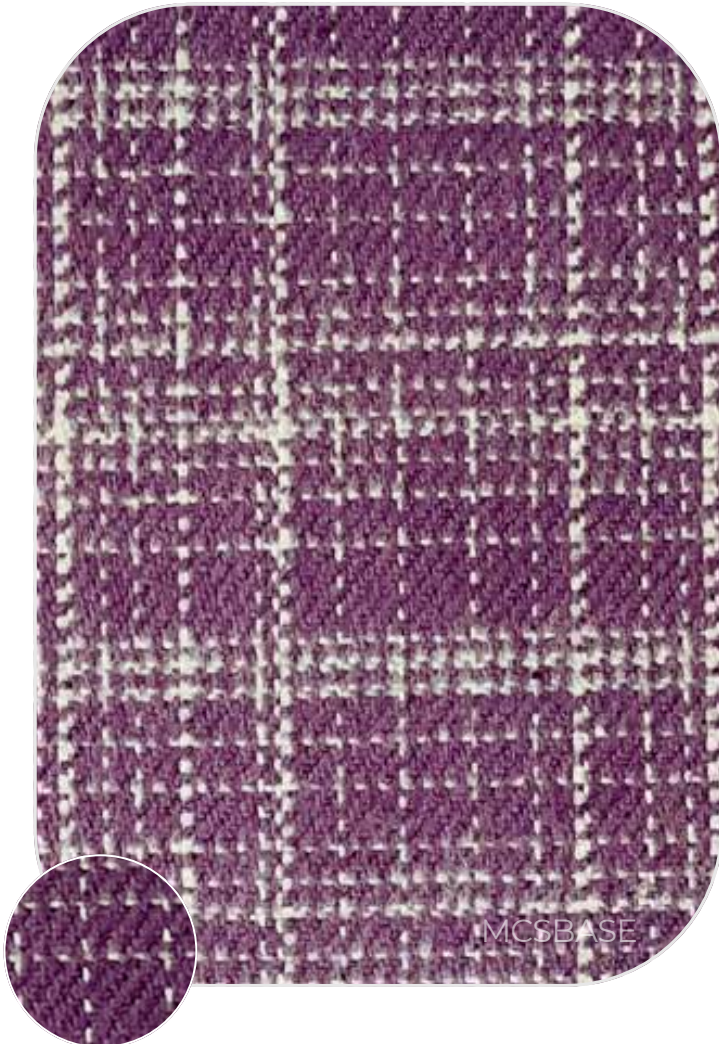
Content: 100% Cotton  
Yarn Count: 2/40S X 20S / 64X56  
Weight: 145 gsm  
Width: 62'



Content: 100% Cotton  
Yarn Count: 2/20S X 2/20S / 54X44  
Weight: 250 gsm  
Width: 62'



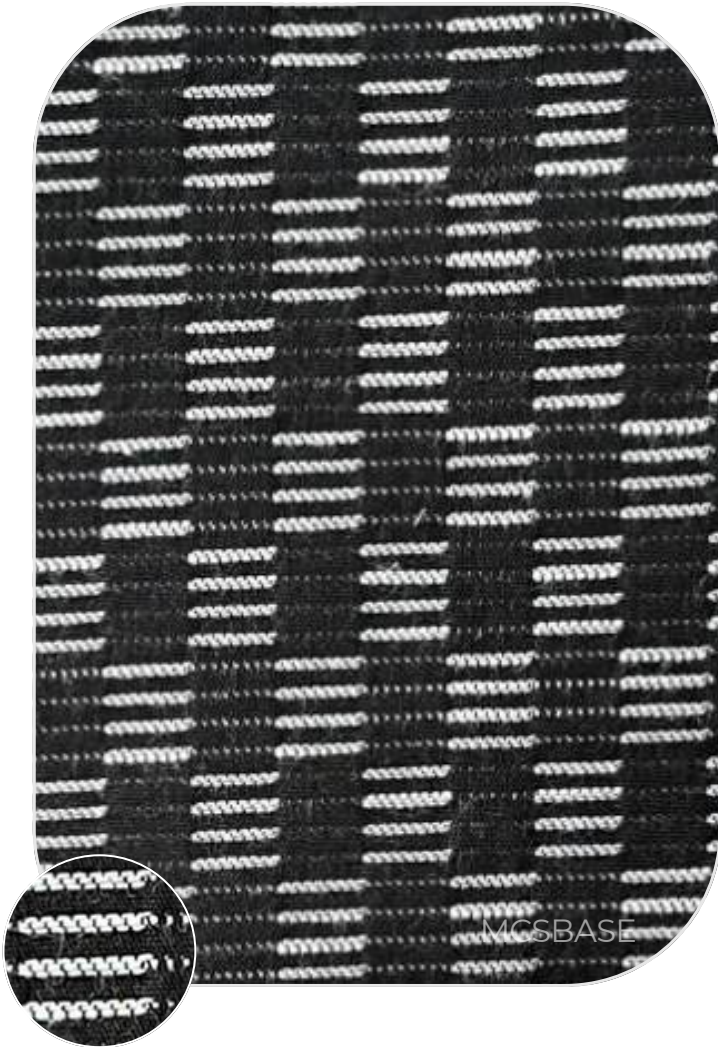
Content: 100% Cotton  
Yarn Count: 2/20S X 2/20S / 54X44  
Weight: 250 gsm  
Width: 62'



Content: 100% Cotton  
Yarn Count: 2/20S X 2/20S / 54X44  
Weight: 250 gsm  
Width: 62'



Content: 100% Cotton  
Yarn Count: 2/20S X 2/20S / 54X44  
Weight: 250 gsm  
Width: 62'



Content: 100% Cotton  
Yarn Count: 2/20S X 2/20S / 44X40  
Weight: 200 gsm  
Width: 62'



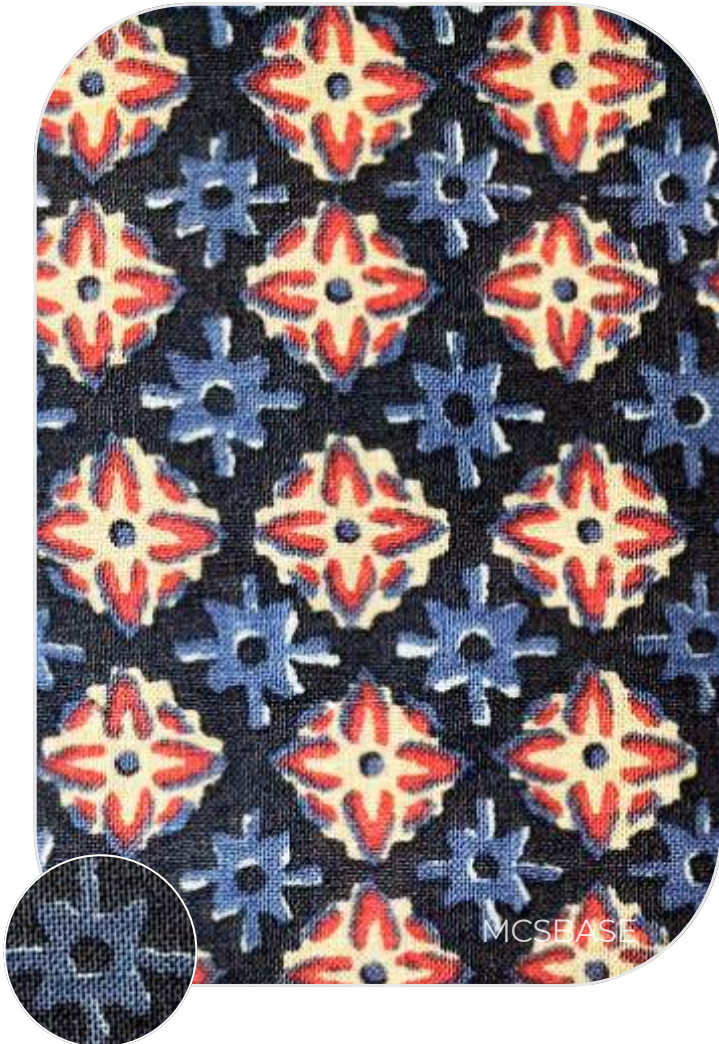
Content: 100% Cotton  
Yarn Count: 2/20S X 2/20S / 44X40  
Weight: 200 gsm  
Width: 62'



Content: 55% Linen 45% Cotton  
Yarn Count: 20SX20S / 60 X 58  
Weight: 130 gsm  
Width: 62'



Content: 55% Linen 45% Cotton  
Yarn Count: 20SX20S / 60 X 58  
Weight: 130 gsm  
Width: 62'



Content: 55% Linen 45% Cotton  
Yarn Count: 20SX20S / 60 X 58  
Weight: 130 gsm  
Width: 62'



Content: 55% Linen 45% Cotton  
Yarn Count: 20SX20S / 60 X 58  
Weight: 130 gsm  
Width: 62'



Content: 55% Linen 45% Cotton  
Yarn Count: 20SX20S / 60 X 58  
Weight: 130 gsm  
Width: 62'



Content: 55% Linen 45% Cotton  
Yarn Count: 20SX20S / 60 X 58  
Weight: 130 gsm  
Width: 62'

# CERTIFICATE

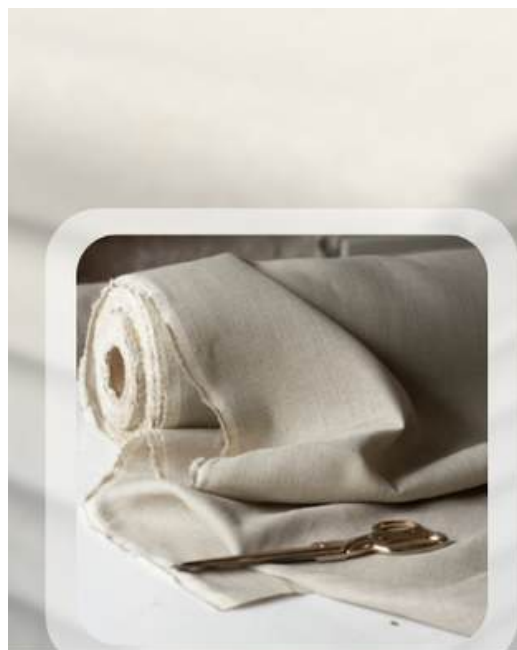




[www.mcsbase.com](http://www.mcsbase.com)



Fashion Collection  
2020/21



[www.mcsbase.com](http://www.mcsbase.com)



MCSBASE