

Mountain Plumbing Products

2026 BULK BUY PROGRAM



DECORATIVE LAVATORY DRAINS

Effective June 1, 2026

Terms

30 Pieces to a Case - Case Quantities Only
Mix & Match Models and Finishes is Allowed

20 Hole Grid Drain with 6" Tailpiece

WITH OVERFLOW	WITHOUT OVERFLOW	FINISH	SPECIAL NET
MT730-2/CPB	MT740-2/CPB	Polished Chrome	\$ 27.66
MT730-2/BRN	MT740-2/BRN	Brushed Nickel	\$ 34.71
MT730-2/PN	MT740-2/PN	Polished Nickel	\$ 34.71
MT730-2/ORB	MT740-2/ORB	Oil Rubbed Bronze	\$ 50.61
MT730-2/MB	MT740-2/MB	Matte Black	\$ 50.61
MT730-2/CHBRZ	MT740-2/CHBRZ	Champagne Bronze	\$ 76.86
MT730-2/MBC	MT740-2/MBC	Cerakote® Matte Black	\$ 59.04
MT730-2/ORBC	MT740-2/ORBC	Cerakote® Oil Rubbed Bronze	\$ 59.04



20 Hole Grid Drain with 8" Tailpiece

WITH OVERFLOW	WITHOUT OVERFLOW	FINISH	SPECIAL NET
MT734/CPB	MT735/CPB	Polished Chrome	\$ 28.93
MT734/BRN	MT735/BRN	Brushed Nickel	\$ 37.09
MT734/PN	MT735/PN	Polished Nickel	\$ 37.09
MT734/ORB	MT735/ORB	Oil Rubbed Bronze	\$ 57.30
MT734/MB	MT735/MB	Matte Black	\$ 57.30
MT734/CHBRZ	MT735/CHBRZ	Champagne Bronze	\$ 80.99
MT734/MBC	MT735/MBC	Cerakote® Matte Black	\$ 66.85
MT734/ORBC	MT735/ORBC	Cerakote® Oil Rubbed Bronze	\$ 66.85



Tear Drop Grid Drain with 8" Tailpiece

WITH OVERFLOW	WITHOUT OVERFLOW	FINISH	SPECIAL NET
MT749/CPB	MT749-3/CPB	Polished Chrome	\$ 30.86
MT749/BRN	MT749-3/BRN	Brushed Nickel	\$ 37.09
MT749/PN	MT749-3/PN	Polished Nickel	\$ 37.09
MT749/ORB	MT749-3/ORB	Oil Rubbed Bronze	\$ 57.30
MT749/MB	MT749-3/MB	Matte Black	\$ 57.30
MT749/CHBRZ	MT749-3/CHBRZ	Champagne Bronze	\$ 80.99
MT749/MBC	MT749-3/MBC	Cerakote® Matte Black	\$ 66.85
MT749/ORBC	MT749-3/ORBC	Cerakote® Oil Rubbed Bronze	\$ 66.85



DECORATIVE LAVATORY DRAINS CONTINUED on NEXT PAGE >

Mountain Plumbing Products

2026 BULK BUY PROGRAM



DECORATIVE LAVATORY DRAINS

Effective June 1, 2026

Terms

30 Pieces to a Case - Case Quantities Only
Mix & Match Models and Finishes is Allowed

Dome Style Drain with Overflow - 8" Tailpiece

DOES NOT SEAL	SEALS WATER	FINISH	SPECIAL NET
MT744-3/CPB	MT745-3/CPB	Polished Chrome	\$ 55.92
MT744-3/BRN	MT745-3/BRN	Brushed Nickel	\$ 66.94
MT744-3/PN	MT745-3/PN	Polished Nickel	\$ 66.94
MT744-3/ORB	MT745-3/ORB	Oil Rubbed Bronze	\$ 73.28
MT744-3/MB	MT745-3/MB	Matte Black	\$ 73.28
MT744-3/CHBRZ	MT745-3/CHBRZ	Champagne Bronze	\$ 125.07
MT744-3/MBC	MT745-3/MBC	Cerakote® Matte Black	\$ 85.49
MT744-3/ORBC	MT745-3/ORBC	Cerakote® Oil Rubbed Bronze	\$ 85.49



Dome Style Drain without Overflow - 8" Tailpiece

DOES NOT SEAL	SEALS WATER	FINISH	SPECIAL NET
MT744-2/CPB	MT745-2/CPB	Polished Chrome	\$ 55.92
MT744-2/BRN	MT745-2/BRN	Brushed Nickel	\$ 66.94
MT744-2/PN	MT745-2/PN	Polished Nickel	\$ 66.94
MT744-2/ORB	MT745-2/ORB	Oil Rubbed Bronze	\$ 73.28
MT744-2/MB	MT745-2/MB	Matte Black	\$ 73.28
MT744-2/CHBRZ	MT745-2/CHBRZ	Champagne Bronze	\$ 125.07
MT744-2/MBC	MT745-2/MBC	Cerakote® Matte Black	\$ 85.49
MT744-2/ORBC	MT745-2/ORBC	Cerakote® Oil Rubbed Bronze	\$ 85.49



Soft Touch with 8" Tailpiece

WITH OVERFLOW	WITHOUT OVERFLOW	FINISH	SPECIAL NET
MT741/CPB	MT742/CPB	Polished Chrome	\$ 29.07
MT741/BRN	MT742/BRN	Brushed Nickel	\$ 35.81
MT741/PN	MT742/PN	Polished Nickel	\$ 35.81
MT741/ORB	MT742/ORB	Oil Rubbed Bronze	\$ 39.02
MT741/MB	MT742/MB	Matte Black	\$ 39.02
MT741/CHBRZ	MT742/CHBRZ	Champagne Bronze	\$ 78.32
MT741/MBC	MT742/MBC	Cerakote® Matte Black	\$ 45.52
MT741/ORBC	MT742/ORBC	Cerakote® Oil Rubbed Bronze	\$ 45.52



SHOWER HEADS on NEXT PAGE >

SHOWER HEADS

Effective June 1, 2026

Terms

20 Pieces to a Case - Case Quantities Only
Mix & Match Models and Finishes is Allowed

6" Shower Heads - 1.6 GPM (2.5 GPM) Included in Box



FINISH	ROUND	SPECIAL NET	SQUARE	SPECIAL NET
Polished Chrome	MT10-6/CPB	\$ 75.15	MT11-6/CPB	\$ 100.71
Brushed Nickel	MT10-6/BRN	\$ 97.09	MT11-6/BRN	\$ 119.76
Polished Nickel	MT10-6/PN	\$ 97.09	MT11-6/PN	\$ 119.76
Matte Black	MT10-6/MB	\$ 113.87	MT11-6/MB	\$ 140.63
Oil Rubbed Bronze	MT10-6/ORB	\$ 113.87	MT11-6/ORB	\$ 140.63

8" Shower Heads - 1.6 GPM (2.5 GPM) Included in Box



FINISH	ROUND	SPECIAL NET	SQUARE	SPECIAL NET
Polished Chrome	MT10-8/CPB	\$ 119.76	MT11-8/CPB	\$ 133.08
Brushed Nickel	MT10-8/BRN	\$ 140.63	MT11-8/BRN	\$ 156.27
Polished Nickel	MT10-8/PN	\$ 140.63	MT11-8/PN	\$ 156.27
Matte Black	MT10-8/MB	\$ 165.15	MT11-8/MB	\$ 183.50
Oil Rubbed Bronze	MT10-8/ORB	\$ 165.15	MT11-8/ORB	\$ 183.50
Satin Gold	MT10-8/SG	\$ 213.09	MT11-8/SG	\$ 220.86

10" Shower Heads - 1.6 GPM (2.5 GPM) Included in Box



FINISH	ROUND	SPECIAL NET	SQUARE	SPECIAL NET
Polished Chrome	MT10-10/CPB	\$ 161.95	MT11-10/CPB	\$ 179.66
Brushed Nickel	MT10-10/BRN	\$ 179.66	MT11-10/BRN	\$ 195.98
Polished Nickel	MT10-10/PN	\$ 179.66	MT11-10/PN	\$ 195.98
Matte Black	MT10-10/MB	\$ 212.33	MT11-10/MB	\$ 230.91
Oil Rubbed Bronze	MT10-10/ORB	\$ 212.33	MT11-10/ORB	\$ 230.91
Satin Gold	MT10-10/SG	\$ 272.21	MT11-10/SG	\$ 296.93

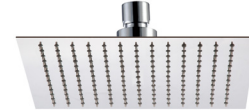
SHOWER HEADS

Effective June 1, 2026

Terms

20 Pieces to a Case - Case Quantities Only
Mix & Match Models and Finishes is Allowed

12" Shower Heads - 1.6 GPM (2.5 GPM) Included in Box



FINISH	ROUND	SPECIAL NET	SQUARE	SPECIAL NET
Polished Chrome	MT10-12/CPB	\$ 198.71	MT11-12/CPB	\$ 213.67
Brushed Nickel	MT10-12/BRN	\$ 235.45	MT11-12/BRN	\$ 240.90
Polished Nickel	MT10-12/PN	\$ 235.45	MT11-12/PN	\$ 240.90
Matte Black	MT10-12/MB	\$ 263.13	MT11-12/MB	\$ 269.94
Oil Rubbed Bronze	MT10-12/ORB	\$ 263.13	MT11-12/ORB	\$ 269.94
Satin Gold	MT10-12/SG	\$ 356.74	MT11-12/SG	\$ 364.99

16" Shower Heads - 1.6 GPM (2.5 GPM) Included in Box



FINISH	ROUND	SPECIAL NET	SQUARE	SPECIAL NET
Polished Chrome	MT10-16/CPB	\$ 353.54	MT11-16/CPB	\$ 368.80
Brushed Nickel	MT10-16/BRN	\$ 378.07	MT11-16/BRN	\$ 390.09
Polished Nickel	MT10-16/PN	\$ 378.07	MT11-16/PN	\$ 390.09
Matte Black	MT10-16/MB	\$ 423.41	MT11-16/MB	\$ 437.30
Oil Rubbed Bronze	MT10-16/ORB	\$ 423.41	MT11-16/ORB	\$ 437.30

SELECT SERIES DRAINS on NEXT PAGE >

NOTES

SELECT SERIES SHOWER DRAINS

Effective June 1, 2026

Terms

25 Assemblies + 25 Grids | 25 Roughs
Mix & Match Models and Finishes of Grid is Allowed

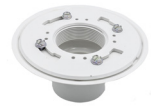
Drain Neck Assembly to Fit All Select Series' Grid

MODEL NUMBER	SIZE	SPECIAL NET
MT606	4"	\$ 8.99
MT606-6	6"	\$ 12.51



Drain Body

MODEL NUMBER		SPECIAL NET
MT605A	ABS	\$ 13.79
MT605P	PVC	\$ 13.79



Rough Assembly Kit (Includes: MT605 + MT606)

MODEL NUMBER		SPECIAL NET
MT601A	ABS	\$ 23.90
MT601P	PVC	\$ 23.90



Tile-In Shower Grid

MODEL NUMBER	SIZE	SPECIAL NET
MT609	4"	\$ 10.11
MT669	6"	\$ 30.34



Squares Shower Drain - 4"

MODEL NUMBER	FINISH	SPECIAL NET
MT607/CPB	Polished Chrome	\$ 28.08
MT607/BRN	Brushed Nickel	\$ 28.45
MT607/PN	Polished Nickel	\$ 28.45
MT607/ORB	Oil Rubbed Bronze	\$ 31.82
MT607/VB	Venetian Bronze	\$ 31.82
MT607/MB	Matte Black	\$ 31.82
MT607/CHBRZ	Champagne Bronze	\$ 40.18



Lines Shower Drain - 4"

MODEL NUMBER	FINISH	SPECIAL NET
MT608/CPB	Polished Chrome	\$ 28.08
MT608/BRN	Brushed Nickel	\$ 28.45
MT608/PN	Polished Nickel	\$ 28.45
MT608/ORB	Oil Rubbed Bronze	\$ 31.82
MT608/VB	Venetian Bronze	\$ 31.82
MT608/MB	Matte Black	\$ 31.82
MT608/CHBRZ	Champagne Bronze	\$ 40.18



SELECT SERIES DRAINS on NEXT PAGE >

CABLE DRIVEN BATH WASTE & OVERFLOWS

Effective June 1, 2026

Terms

24 Complete (Rough + Trim) Drains to a Case - Case Quantities Only
Mix & Match Models and Finishes is Allowed
Order Must Include 24 Roughs and 24 Trims

Brass Body with Flexible Overflow - Rough Only

MODEL NUMBER	SPECIAL NET	
BDR20SBR22	\$ 239.37	

Schedule 20 Tubular ABD Cable Driven - Rough Only

MODEL NUMBER	SPECIAL NET	
BDR20S22-2	\$ 59.32	

Schedule 40 ABS & PVC Cable Driven with Flexible Overflow Neck

TUB DEPTHS	PVC		ABS	
	MODEL NUMBER	SPECIAL NET	MODEL NUMBER	SPECIAL NET
Tub Depths 12" - 22"	BWO40S22P2	\$ 59.33	BWO40S22A2	\$ 59.33
Tub Depths 23" - 36"	BWO40S45P2	\$ 63.90	BWO40S45A2	\$ 63.90

Brass Trim Kits for All Cable Driven Bath Waste & Overflows

MODEL NUMBER	FINISH	SPECIAL NET	
TRIMM3/CPB	Polished Chrome	\$ 29.24	
TRIMM3/BRN	Brushed Nickel	\$ 39.30	
TRIMM3/PN	Polished Nickel	\$ 39.30	
TRIMM3/MB	Matte Black	\$ 57.85	
TRIMM3/ORB	Oil Rubbed Bronze	\$ 57.85	
TRIMM3/VB	Venetian Bronze	\$ 57.85	
TRIMM3/CHBRZ	Champagne Bronze	\$ 92.44	

Plastic Trim Kits for All Cable Driven Bath Waste & Overflows

MODEL NUMBER	FINISH	SPECIAL NET	
TRIMM3/CPB	Polished Chrome	\$ 12.58	
TRIMM3/WH	White	\$ 12.58	

PLUMBER'S HALF KITS & BATH TRIM KITS on NEXT PAGE >

Mountain Plumbing Products

2026 BULK BUY PROGRAM



PLUMBER'S HALF KITS & BATH TRIM KITS

Effective June 1, 2026

Terms

Minimum Order Quantity = 25 Units Total
Mix & Match Models and Finishes is Allowed

Plumber's Half Kits



FINISH	BDWPHKT/ABS or BDWPHKT/PVC	BDWPLTA or BDWPLTP	BDWUNLTA or BDWUNLTP	BDWPTTA or BDWPTTP	BDWUNVA or BDWUNVP
ROUGH Only	\$ 11.44				
Polished Chrome		\$ 43.36	\$ 50.58	\$ 55.61	\$ 56.61
Brushed Nickel		\$ 46.93	\$ 54.68	\$ 56.93	\$ 61.97
Polished Nickel		\$ 46.93	\$ 54.68	\$ 56.93	\$ 61.97
Matte Black		\$ 50.49	\$ 56.12	\$ 63.31	\$ 64.46
Champagne Bronze		\$ 87.09	\$ 94.81	\$ 102.23	\$ 105.90
Satin Gold		\$ 87.09	\$ 94.81	\$ 102.23	\$ 105.90
Cerakote® Matte Black		\$ 60.73	\$ 67.48	\$ 76.09	\$ 77.48
Cerakote® Oil Rubbed Bronze		\$ 60.73	\$ 67.48	\$ 76.09	\$ 77.48

Bath Trim Kits



FINISH	MT94-2	HTRLT	UNVTRIM	UNVLT
Polished Chrome	\$ 44.20	\$ 31.95	\$ 45.20	\$ 38.52
Brushed Nickel	\$ 45.52	\$ 35.52	\$ 50.56	\$ 43.27
Polished Nickel	\$ 45.52	\$ 35.52	\$ 50.56	\$ 43.27
Matte Black	\$ 51.90	\$ 39.08	\$ 53.05	\$ 44.71
Champagne Bronze	\$ 90.82	\$ 75.67	\$ 94.49	\$ 83.40
Satin Gold	\$ 90.82	\$ 75.67	\$ 94.49	\$ 83.40
Cerakote® Matte Black	\$ 64.68	\$ 49.32	\$ 66.07	\$ 56.07
Cerakote® Oil Rubbed Bronze	\$ 64.68	\$ 49.32	\$ 66.07	\$ 56.07

STRAINERS and DISPOSER TRIMS on NEXT PAGE >

STRAINERS

Effective June 1, 2026

Terms

Minimum Order Quantity = 24 Units Total
Mix & Match Models and Finishes is Allowed

Sink Strainers



FINISH	MT300	MT310	MT8799	MT115
Polished Chrome	\$ 36.53	\$ 36.53	\$ 44.94	\$ 44.94
Brushed Stainless	\$ 24.18	\$ 24.18	\$ 29.75	\$ 29.75
Brushed Nickel	\$ 37.99	\$ 37.99	\$ 46.72	\$ 46.72
Polished Nickel	\$ 37.99	\$ 37.99	\$ 46.72	\$ 46.72
Matte Black	\$ 40.89	\$ 40.89	\$ 50.29	\$ 50.29
Oil Rubbed Bronze	\$ 40.89	\$ 40.89	\$ 50.29	\$ 50.29
Venetian Bronze	\$ 40.89	\$ 40.89	\$ 50.29	\$ 50.29
Satin Gold	\$ 72.78	\$ 72.78	\$ 89.52	\$ 89.52
Champagne Bronze	\$ 72.78	\$ 72.78	\$ 89.52	\$ 89.52
PVD Brushed Bronze	\$ 72.78	\$ 72.78	\$ 89.52	\$ 89.52
Cerakote® Matte Black	\$ 49.07	\$ 49.07	\$ 60.36	\$ 60.36
Cerakote® Oil Rubbed Bronze	\$ 49.07	\$ 49.07	\$ 60.36	\$ 60.36

Disposer Trims - Standard Flange



FINISH	MT200EV	MT210EV	MT7799EV
Polished Chrome	\$ 38.57	\$ 38.57	\$ 38.57
Brushed Stainless	\$ 25.80	\$ 25.80	\$ 25.80
Brushed Nickel	\$ 40.31	\$ 40.31	\$ 40.31
Polished Nickel	\$ 40.31	\$ 40.31	\$ 40.31
Matte Black	\$ 42.34	\$ 42.34	\$ 42.34
Oil Rubbed Bronze	\$ 42.34	\$ 42.34	\$ 42.34
Venetian Bronze	\$ 42.34	\$ 42.34	\$ 42.34
Satin Gold	\$ 75.40	\$ 75.40	\$ 75.40
Champagne Bronze	\$ 75.40	\$ 75.40	\$ 75.40
PVD Brushed Bronze	\$ 75.40	\$ 75.40	\$ 75.40
Cerakote® Matte Black	\$ 50.81	\$ 50.81	\$ 50.81
Cerakote® Oil Rubbed Bronze	\$ 50.81	\$ 50.81	\$ 50.81

STRAINERS & DISPOSER TRIMS CONTINUED on NEXT PAGE >

STRAINERS

Effective June 1, 2026

Terms

Minimum Order Quantity = 24 Units Total
Mix & Match Models and Finishes is Allowed

Disposer Trims - Extended Flange



FINISH	MT202	MT212EV	MT130
Polished Chrome	\$ 42.63	\$ 42.63	\$ 44.76
Brushed Stainless	\$ 29.87	\$ 29.87	\$ 31.37
Brushed Nickel	\$ 43.49	\$ 43.49	\$ 45.67
Polished Nickel	\$ 43.49	\$ 43.49	\$ 45.67
Matte Black	\$ 46.53	\$ 46.53	\$ 48.85
Oil Rubbed Bronze	\$ 46.53	\$ 46.53	\$ 48.85
Venetian Bronze	\$ 46.53	\$ 46.53	\$ 48.85
Satin Gold	\$ 80.04	\$ 80.04	\$ 84.04
Champagne Bronze	\$ 80.04	\$ 80.04	\$ 84.04
PVD Brushed Bronze	\$ 80.04	\$ 80.04	\$ 84.04
Cerakote® Matte Black	\$ 55.83	\$ 55.83	\$ 58.63
Cerakote® Oil Rubbed Bronze	\$ 55.83	\$ 55.83	\$ 58.63

Disposer Trims - Stopper Only



FINISH	MT120EV	MT204
Polished Chrome	\$ 38.57	\$ 38.57
Brushed Stainless	\$ 25.80	\$ 25.80
Brushed Nickel	\$ 40.31	\$ 40.31
Polished Nickel	\$ 40.31	\$ 40.31
Matte Black	\$ 42.34	\$ 42.34
Oil Rubbed Bronze	\$ 42.34	\$ 42.34
Venetian Bronze	\$ 42.34	\$ 42.34
Satin Gold	\$ 75.40	\$ 75.40
Champagne Bronze	\$ 75.40	\$ 75.40
PVD Brushed Bronze	\$ 75.40	\$ 75.40
Cerakote® Matte Black	\$ 50.81	\$ 50.81
Cerakote® Oil Rubbed Bronze	\$ 50.81	\$ 50.81

AIR SWITCHES on NEXT PAGE >

Mountain Plumbing Products

2026 BULK BUY PROGRAM



AIR SWITCHES

Effective June 1, 2026

Terms

Minimum Order Quantity = 24 Units Total
Mix & Match Finishes is Allowed

MT951 or MT953

FINISH	SPECIAL NET
Polished Chrome	\$ 39.40
Brushed Stainless	\$ 39.40
Brushed Nickel	\$ 42.18
Polished Nickel	\$ 42.18
Matte Black	\$ 49.24
Oil Rubbed Bronze	\$ 49.24
Venetian Bronze	\$ 49.24
Satin Brass	\$ 55.51
Satin Gold	\$ 72.61
Champagne Bronze	\$ 72.61
PVD Brushed Bronze	\$ 72.61
Cerakote® Matte Black	\$ 59.08
Cerakote® Oil Rubbed Bronze	\$ 59.08



MT951



MT953

Air Switches - Components



FINISH	MT955	MT951/BOX	MT953/BOX
NO Finish	N/A	\$ 27.36	\$ 27.36
Polished Chrome	\$ 12.03		
Brushed Stainless	\$ 12.03		
Brushed Nickel	\$ 14.81		
Polished Nickel	\$ 14.81		
Matte Black	\$ 21.88		
Oil Rubbed Bronze	\$ 21.88		
Venetian Bronze	\$ 21.88		
Satin Brass	\$ 28.15		
Satin Gold	\$ 45.25		
Champagne Bronze	\$ 45.25		
PVD Brushed Bronze	\$ 45.25		
Cerakote® Matte Black	\$ 26.26		
Cerakote® Oil Rubbed Bronze	\$ 26.26		

WATER FILTERS on NEXT PAGE >

FILTERS

Effective June 1, 2026

Terms

Mix and Match across all SKUs is allowed in order to reach minimums

Complete Filtration Systems



FINISH	MT1250XL	MT3K-HF	MT6K-HF
6 - 11 Units	\$ 128.91	\$ 139.23	\$ 155.51
12 - 47 Units	\$ 117.18	\$ 126.57	\$ 141.38
48+ Units	\$ 106.53	\$ 115.06	\$ 128.53

Complete Filtration Systems



FINISH	MT1250XL/RFC	MT3K-HF/RFC	MT6K-HF/RFC
6 - 11 Units	\$ 57.08	\$ 76.32	\$ 92.54
12 - 47 Units	\$ 51.89	\$ 69.38	\$ 84.13
48+ Units	\$ 47.17	\$ 63.07	\$ 76.48

WHOLE HOUSE FILTERS on NEXT PAGE >

WHOLE HOUSE FILTRATION

Effective June 1, 2026

Terms

Mix and Match whole system and replacement cartridge allowed in order to reach minimums

Whole House Filter System



FINISH	MTWHF	MTWHF/RFC	MTWHF-PRE	MTWHF-PRE/RFC
5 - 9 Units	\$ 816.55	\$ 522.01	\$ 518.82	\$ 119.40
10+ Units	\$ 773.58	\$ 494.53	\$ 491.51	\$ 113.11