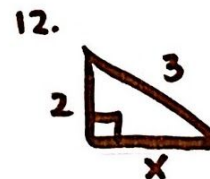
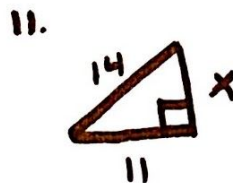
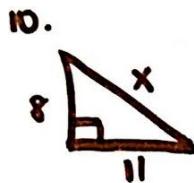
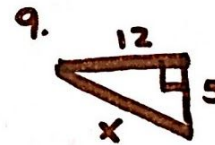
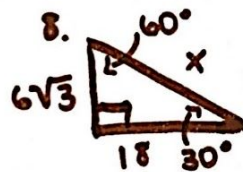
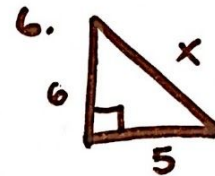
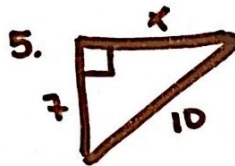
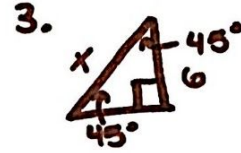
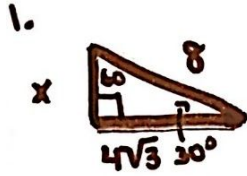


Trigonometry: Practice Activity

Directions: Find the missing side of the right triangle using the Pythagorean Theorem.

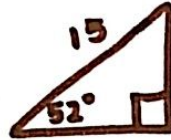


Directions: Find the value of the side or angle as indicated.

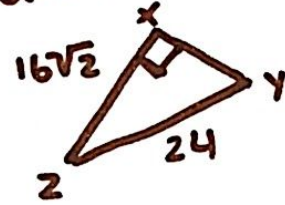
1.



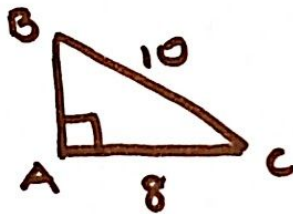
2.



3. $\sin \gamma$



4. $\cos C$



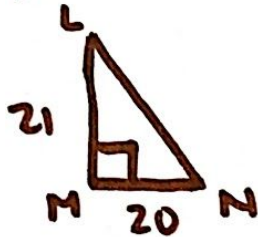
5.



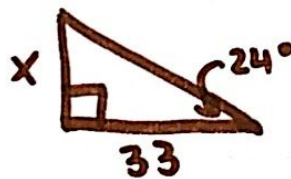
6.



7. $\tan N$



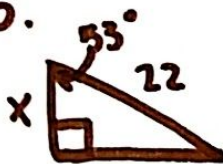
8.



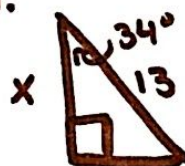
9.



10.



11.



12.



Answer Key:

Pythagorean Theorem:

- | | |
|----------------|-----------------|
| 1. 4 | 7. 6.71 |
| 2. 5 | 8. $12\sqrt{3}$ |
| 3. $6\sqrt{2}$ | 9. 13 |
| 4. 5 | 10. 13.6 |
| 5. 7.14 | 11. 8.66 |
| 6. 7.81 | 12. 2.24 |

Trig. Ratios:

- | | |
|--------------------------|--------------------|
| 1. 27.6 | 7. $\frac{21}{20}$ |
| 2. 23.8 | 8. 14.7 |
| 3. $\frac{2\sqrt{2}}{3}$ | 9. 31° |
| 4. $\frac{4}{5}$ | 10. 21 |
| 5. 13 | 11. 10.8 |
| 6. 11.8 | 12. 11.4 |