



**MAPPING RESILIENCE:
GIS FOR CLIMATE, CULTURE,
AND COMMUNITY**



Hosted by



We extend our sincere gratitude to Esri for hosting the California Tribal Community Open Campus Day on May 20, 2026.

Esri's continued partnership and commitment to supporting Tribal communities through geospatial technology, education, and collaboration plays an essential role in advancing resilience, sovereignty, and innovation.

Mapping Resilience: GIS for Climate, Culture, and Community

May 20, 2026: ESRI Open Campus Day at ESRI, Redlands

May 21–22, 2026: Summit at University of Redlands

Welcome to the California Native American Tribal GIS Summit. This gathering brings together Tribal leaders, GIS professionals, researchers, and community members to explore how geospatial technologies support climate resilience, cultural preservation, and community empowerment.

Through shared knowledge and collaborative dialogue, we'll highlight how GIS is being used to protect cultural landscapes, strengthen Tribal data sovereignty, and inform environmental stewardship. Together, we will examine how mapping tools and Indigenous knowledge systems can be interwoven to address today's most pressing climate and community challenges.

Opening Statement

Opening Statement

GIS is Tool for Today's Tribal Sovereignty and Resilience

Dr. Donna Miranda-Begay, Founder of CA Native American Tribal GIS Summit
Tübatulabals of Kern Valley, Tule River Yokut, Paiute, and Dine'

It is my honor to assist with the formation of our 2nd California Native American Tribal GIS Summit. I am thankful for the support of our co-host, Nóra Pulskamp, University of Redlands Tribal Student Program Director. I appreciate the confidence and support of our summit's participants, presenters, sponsors, planning team, Native arts & crafts vendors, and volunteers. Collectively, we are all making a positive difference for our Tribes, Tribal communities, Tribal partner organizations, and our youth.

Often, I reflect back to what I was told about "new tools for Tribes." It was back in 1967, it was my babysitter, Marie Potts, a Mountain Maidu Basket Weaver and Editor of the first California-based national newsletter, *Smoke Signals*. My mother, Leona Miranda-Begay, would help Marie with typing up the stencils for the articles. While my mother worked in the basement of Marie's home in Sacramento (Oak Park area), Marie would watch over me. Marie encouraged me to do well in school. She stated, "you know the new tool of today for Tribes is the pen to the paper." As she said this, I remember her holding up a pen and smiling back at me. At that time, I wasn't really sure what she meant. However, today it is clear that she was letting me know that Tribes require the ongoing knowledge build of current policies, processes, and technology.

During 1998-2004, I saw the need for Tribes to address the evolving technology, especially for their new gaming operations. I left state service to help Tribes with the teaching and training of IT strategic planning and IT management. As I retired in 2022 from state service, I was quite aware of Tribes' successes in regaining their traditional lands back. I saw the need for mapping technology to improve natural resources management, protection of cultural landscapes, and environmental justice support. I reflect back to what Marie Potts said to me about the "new tool for today"—I see GIS is the new tool for today's Tribal Sovereignty, Data Governance, and Resilience.

I hope you enjoy this year's CA Native American Tribal GIS Summit.

alsa'ana talliwict peniiu omhits
In a good way, the circle that connects us



Donna Miranda-Begay



California Tribal GIS Training at Cerro Coso Community College, Bishop, CA (March 11, 2026)



Marie Potts, Taylorsville, CA (1967)

Day 1 Agenda

Day 1 Agenda

Thursday, May 21, 2026

Grove Hall, Orton Center

Thursday, May 21, 2026

(continued)

- 8:00 AM **Welcoming** (Nóra Pulskamp and Dr. Donna Miranda-Begay)
- 8:10 AM **Cultural Opening** (KIm Marcus)
- 8:35 AM **Welcoming** (Dr. Adrienne McCormick)
- 8:40 AM **Keynote** (Secretary Wade Crowfoot)
- 8:45 AM **Keynote** (Chairwoman Erica Pinto)
- 9:15 AM **Empowering Yuhaaviatam through GIS Champions Self-Service** (Alexander Paz)
- 9:45 AM **Tribal Spatial Data Repatriation: Using Historical Maps to Manage Contemporary Resources** (Leece Oliver LaRue)
- 10:15 AM **Break**
- 10:30 AM **Documenting Tribal Cultural Resources: The Importance of the Southeast Lake Cahuilla Active Volcanic Cultural District Landscape** (Carmen Lucas)
- 11:15 AM **OpsReady: Tribal Enterprise GIS Deployment and Infrastructure Design** (Louis Curson-Mayorga)
- 11:40 AM **Tribal Data Sovereignty and the CARE+FAIR Framework** (Shasta Gaughen)
- 12:10 PM **Pinyon Pine Stewardship Study** (Dean Tonenena)
- 12:35 PM **Lunch**
- 1:35 PM **Plant Explorer: An Interactive Dashboard for Conservation Planning** (Gabriela Morales and Alma Quintero)
- 2:05 PM **Past, Present and Future: California Indian Basketweavers' Association** (Starla Madrigal)
- 2:45 PM **CalENViroScreen** (Zoe Varner)
- 3:15 PM **Break**

Day 1 Workshops

- 1:35–3:35 PM **IHS ArcGIS Open Dump Field Map Application & Live Demo** (San Gorgonio)
Travis Robinett and Shari Wendt
- 1:35–2:35 PM **Dive Into Indigenous Youth Guardianship!** (Vineyard)
Coach Jackson
- 1:35–3:35 PM **Managing Your UAV Data with GIS** (San Bernardino)
Landon Blake
- 1:35–3:35 PM **Hands-On Tools for Sovereignty, Storytelling, and Shaping Environmental Decisions** (Mt. Harrison)
Manisha Priyadarshini
- 3:20–4:05 PM **Telling Stories With Your Data Using Story Maps** (Grove Hall)
Lisa Benvenuti

Day 2 Agenda

Day 2 Agenda

Friday, May 22, 2026

Grove Hall, Orton Center

Friday, May 22, 2026

Grove Hall, Orton Center

(continued)

- 8:00 AM **Welcoming** (Nóra Pulskamp and Dr. Donna Miranda-Begay)
- 8:10 AM **Cultural Opening**
- 8:30 AM **Keynote** (Carmen Lucas)
- 9:00 AM **Fernandeño Tataviam Band of Mission Indians’ Development of the Tataviam Environmental and Cultural Data Mapping Portal** (Miguel A. Luna)
- 9:40 AM **The Hitch** (Jeremy Sorgen, Luis Santana, Ron Montez, and Jocelyn Garcia)
- 10:10 AM **Break**
- 10:25 AM **USGS Data for All** (Cynthia Ritmiller)
- 10:45 AM **GIS in Support of Caltrans NAGPRA/CalNAGPRA Repatriation** (Julia Huddleson and Althea Asaro)
- 11:15 AM **Partnership Opportunities: Putting Water and Ecological Data to Work** (Christina McCreedy)
- 11:30 AM **Mapping Public Health Risk: State Drinking Water GIS Tools** (Tara Quitavon)
- 12:00 PM **CAL FIRE’s Tribal Affairs Program** (Helen Lopez)
- 12:15 PM **CALEPA Office of Secretary** (Maurice Lyles)
- Lunch**
- 12:30 PM **Understanding and Accessing CAL FIRE’s Open GIS Wildfire Data** (Thomas Crimmel)
- 1:30 PM **Applying GIS in Emergency Management Operations** (Alex Shariatmadari)
- 2:30 PM **Methods for Reporting on American Indian and Alaska Native Population Health in Riverside County** (Andrea Perez)

- 2:45 PM **Break**
- 3:00 PM **Pathways for Professional Growth as Students of GIS** (Andrea Perez)
- 3:30 PM **CalHeatScore: A Public Health Tool to Help Californians Stay Informed, Ready, and Safe When Temperatures Rise** (Walker Wieland)
- 4:00 PM **Summit Closing** (Donna Miranda-Begay)

Day 2 Workshops

- 1:30–2:15 PM **Enhancing Community Resilience Through GIS-Driven Catastrophe Modeling and Home Mitigation** San Geronio
Brenda Caloca
- 1:30–2:15 PM **Collecting Data with Survey123, Field Maps, and Quick Capture** Vineyard
Will Wagner
- 1:30–2:15 PM **Presenting Data with Dashboards** Mt. Harrison
Julia Lenhardt
- 1:30–3:30 PM **UAV LiDAR: What It Is, What It Costs, and Six Questions to Ask Before You Hire a Provider** San Bernardino
Landon Blake

Presentation Descriptions

DAY 1: Listed in order of occurrence in the agenda

Empowering Yuhaaviatam through GIS Champions Self-Service

Alexander Paz, *Yuhaaviatam of San Manuel Nation*

This presentation describes how the Yuhaaviatam of San Manuel Nation is modernizing and decentralizing GIS operations through the GIS Champions program. The initiative trains Tribal departments to independently manage geographic data using ArcGIS tools, reducing reliance on centralized GIS staff while strengthening data stewardship across the organization. The session will cover program development, training structure, SOP creation, outreach efforts, and cross-department success stories demonstrating improved operational efficiency and data accessibility.

Tribal Spatial Data Repatriation: Using Historical Maps to Manage Contemporary Resources

Leece Oliver LaRue, *Karuk Tribe Sipnuuk Division*

This presentation explores how historical maps and archival spatial data are being used to support Tribal spatial data repatriation efforts. The work focuses on restoring access to cultural and geographic information for the Karuk Tribe and applying it to contemporary natural resource management. The session highlights methods for integrating historical cartographic sources into modern GIS workflows to support Tribal sovereignty and resource decision-making.

Documenting Tribal Cultural Resources: The Importance of the Southeast Lake Cahuilla Active Volcanic Cultural District Landscape

Carmen Lucas, *Kwaaymii Laguna Band*

This presentation discusses a multi-year effort to document the Southeast Lake Cahuilla Active Volcanic Cultural District, an approximately 10,000-acre cultural landscape in Imperial County. Through research, consultation, and mapping, the team developed documentation supporting a National Register nomination. The session also addresses threats from geothermal development and lithium extraction, emphasizing the importance of multidisciplinary approaches to cultural landscape preservation and Tribal stewardship.

OpsReady: Tribal Enterprise GIS Deployment and Infrastructure Design

Louis Curson-Mayorga, *Indigenous Futures Society*

This session explores the development of Tribal-centered GIS infrastructure that prioritizes data sovereignty, governance, and long-term stewardship. It highlights collaborative efforts to build enterprise GIS systems where Tribes maintain control over servers, data, and workflows, including options for on-site hosting. There is emphasis on the relational and trust-building work required to ensure technology supports rather than undermines Tribal sovereignty.



JOIN US FOR AN EVENING OF
SONG, DANCE, AND COMMUNITY!

THURSDAY, MAY 21, 2026

5:00PM-9:00PM

UNIVERSITY OF REDLANDS
1250 E BROCKTON AVE, REDLANDS CA

Arts, Crafts, and Food Vendors
Free and open to the public

Presentation Descriptions

DAY 1: Listed in order of occurrence in the agenda

Applying the FAIR+CARE Framework to Tribal Cultural Data Governance

Shasta Gaughen, *Pala Band of Mission Indians*

This presentation examines the application of the FAIR+CARE framework in advancing Tribal data and knowledge sovereignty. Drawing on the work of the FAIR+CARE Cultural Heritage Network, the session discusses how data governance principles can better support Tribal control over cultural and environmental information and improve ethical data use in research and policy contexts.

Pinyon Pine Traditional Stewardship Study: Indigenous Ecological Knowledge and Forest Health

Dean Tonenena, *Kootzaduka'a Tribe of California and Nevada*

The Tubabe Mabetsea Natuneddooe project documents traditional Indigenous stewardship practices within pinyon pine forests and their role in supporting ecological health. Over generations, these practices shaped stand structure, increased understory diversity, and reduced fuel loads that contribute to catastrophic wildfire. The presentation shares findings from a three-year study highlighting the relationship between cultural land management and long-term forest resilience.

Plant Explorer: An Interactive GIS Tool for Conservation Planning

Gabriela Morales and Alma Quintero, *Collaborative of Native Nations for Climate Transformation and Stewardship (CNNCTS), SDSU*

This session presents the Plant Explorer, a web-based GIS platform built using ArcGIS Online to support conservation and restoration planning. The tool integrates habitat data, species distributions, and ecological attributes into an interactive interface designed for both technical and non-technical users. The presentation demonstrates how similar platforms can support Tribal stewardship priorities, including food systems, restoration planning, and culturally significant plant protection.

Past, Present and Future: California Indian Basketweavers' Association

Starla Madrigal, *California Indian Basketweavers' Association*

Explores the mission and legacy of the California Indian Basketweavers' Association (CIBA), focusing on the preservation and continuation of basketweaving traditions across California. The session highlights traditional ecological knowledge, pesticide impacts on gathering practices, cultural burns, and policy advocacy. It also reflects on CIBA's annual gatherings as spaces for cultural exchange, intergenerational learning, and community strengthening.

Presentation Descriptions

CalEnviroScreen 5.0: Advancing Environmental Justice Mapping and Tribal Collaboration

Zoe Varner, *Office of Environmental Health Hazard Assessment (OEHHA), CalEPA*

CalEnviroScreen is California's environmental justice mapping tool used to identify communities disproportionately affected by pollution and environmental health burdens. This session introduces updates in CalEnviroScreen 5.0, including Tribal data enhancements. It also demonstrates how Tribes can use the tool for grant applications, planning, and environmental assessment, while inviting feedback on improving Tribal data representation and sovereignty considerations.

Presentation Descriptions

DAY 2: Listed in order of occurrence in the agenda

Tataviam Environmental and Cultural Data Mapping Portal: Advancing Tribal Climate Resilience and Data Sovereignty

Miguel A. Luna, *Fernandeño Tataviam Band of Mission Indians; Tataviam Land Conservancy; Climate Resolve; Council for Watershed Health*

This presentation highlights the development of a Tribal GIS platform designed to support climate resilience, cultural stewardship, and data-driven planning. The Tataviam Environmental and Cultural Data Mapping Portal integrates more than 100 environmental and cultural datasets, including state climate assessment findings, into a secure Tribal system. The session outlines portal structure, tiered access for sensitive data, and interactive tools designed for both technical and non-technical users, while emphasizing lessons learned in data governance, cultural resource protection, and interagency collaboration.

Hitch Stories: Intergenerational Storytelling and Ecocultural Mapping of Xabatin (Clear Lake)

Jeremy Sorgen and Luis Santana, *Robinson Rancheria*; Ron Montez and Jocelyn Garcia, *Big Valley Rancheria*

This presentation shares the Hitch Stories ArcGIS StoryMap and accompanying animated film developed through an intergenerational storytelling project with Pomo Elders and youth. The project documents cultural knowledge of the hitch fish, an ecocultural keystone species of Clear Lake. Through recorded Elder narratives and spatial storytelling, the initiative centers Indigenous perspectives on landscape history, ecological change, and cultural continuity.

USGS National Geospatial Data and the National Map Program

Cynthia Ritmiller, *U.S. Geological Survey*

Provides an overview of the U.S. Geological Survey's National Geospatial Program and the data products available through the National Map. The session covers elevation, hydrography, and topographic datasets that support planning, mapping, and scientific analysis across the United States. It also introduces the 3D National Topography Model and emphasizes access to free GIS resources while recognizing Tribal sovereignty and encouraging engagement with USGS data services.

Presentation Descriptions

DAY 2: Listed in order of occurrence in the agenda

GIS in Support of Caltrans NAGPRA/CalNAGPRA Repatriation Efforts

Julia Huddleson; Althea Asaro, *California Department of Transportation*

This presentation describes a GIS-based approach developed by Caltrans to support NAGPRA and CalNAGPRA consultation and repatriation processes. The system links cultural resource locations to confidential documentation, helping identify collections within Tribal areas of interest. The session highlights how spatial tools improve consultation efficiency by organizing geographic and archival information to support repatriation workflows.

Advancements in State Water and Ecological Data Sharing

Christina McCready, *California Department of Water Resources*

Examines California's implementation of the Open and Transparent Water Data Act and ongoing efforts to improve access to water and ecological datasets. The presentation highlights data-sharing initiatives and partnership opportunities that support collaborative decision-making and improved use of environmental data across agencies and communities.

Mapping Public Health Risk Through Drinking Water GIS Tools

Tara Quitavon, *State Water Resources Control Board – Division of Drinking Water*

This session explores how GIS tools are used to assess public health risk and infrastructure conditions in drinking water systems across California. It introduces key mapping resources, including the Needs Assessment, Aquifer Risk Map, and System Area Boundary Layer, and explains how these tools support regulatory coordination, funding decisions, and infrastructure planning, particularly for disadvantaged communities.

CAL FIRE Tribal Affairs Program and Cultural Fire Collaboration

Helen Lopez, *California Department of Forestry and Fire Protection*

Provides an overview of CAL FIRE's Tribal Affairs Program, including its role in supporting Tribal collaboration, cultural fire practices, and co-management efforts. The presentation highlights ongoing initiatives, partnerships with Tribal communities, and efforts to integrate Indigenous fire stewardship into state wildfire management strategies.

Presentation Descriptions

DAY 2: Listed in order of occurrence in the agenda

CalEPA Tribal Funding Opportunities and Advisory Updates

Maurice Lyles, *California Environmental Protection Agency*

This presentation outlines the Plastic Pollution Mitigation Fund Tribal funding opportunity and provides updates on the CalEPA Tribal Advisory Committee. It highlights mechanisms for Tribal engagement in environmental funding programs and policy development across CalEPA agencies.

Understanding and Accessing CAL FIRE Wildfire GIS Data

Thomas Crimmel, *California Department of Forestry and Fire Protection*

Explores how CAL FIRE wildfire and prescribed fire perimeter data is collected, maintained, and made available to the public. The session includes an overview of vegetation burn severity data and explains how these datasets support wildfire response, planning, and ecological analysis. It also outlines future developments in CAL FIRE's GIS data programs.

Applying GIS in Emergency Management Operations

Alex Shariatmadari, *California Office of Emergency Services (Cal OES)*

This session examines how GIS is used in emergency management to support disaster response, risk analysis, and operational coordination. It includes real-world examples of mapping tools used during emergencies and demonstrates how Cal OES GIS services can be adapted to support a wide range of hazards and stakeholder needs.

American Indian and Alaska Native Population Health Mapping in Riverside County

Andrea Perez, *Riverside University Health System, Public Health*

This presentation shares findings from the first Riverside County public health report focused on American Indian and Alaska Native populations. It outlines methodologies for defining populations in spatial health analysis while addressing data suppression challenges. The session also highlights how geography influences health outcome calculations and reporting.

Presentation Descriptions

Pathways for Professional Growth in GIS

Andrea Perez, *Riverside University Health System, Public Health*

This presentation offers guidance on professional development opportunities in GIS, including regional and national organizations, data resources, and strategies for showcasing work. It aims to support students and early-career professionals in building skills, networks, and confidence within the geospatial field.

CalHeatScore Tool Overview and Updates

Walker Wieland, *Office of Environmental Health Hazard Assessment, CalEPA*

Introduces the CalHeatScore tool, which provides heat-risk information to support public health preparedness and climate resilience. The session covers recent updates, planned enhancements, and resources designed to improve accessibility and usability for heat-vulnerable communities across California.

Workshop Descriptions

DAY 1: Listed in order of occurrence in the agenda

IHS ArcGIS Field Maps for Open Dump Site Assessment

Travis Robinett, *EPA Region 9*; Shari Wendt, *Indian Health Service*

This hands-on workshop provides training on the IHS ArcGIS Field Maps application for documenting and assessing open dump sites on Tribal lands. Participants will learn how the tool collects field data on site conditions, contents, and health risks to support environmental and infrastructure planning.

Coastal Defenders Indigenous Youth Guardianship and GIS Exploration

Coach Jackson, *Coastal Defenders*

This interactive workshop introduces Indigenous youth guardianship through aquatics-based research, monitoring, and GIS. Participants will explore ongoing stewardship projects, learn how GIS supports Indigenous-led environmental work, and see a demonstration of a data sovereignty tool.

Managing UAV Data with GIS: Organization, Storage, and Workflow Best Practices

Landon Blake, *Redefined Horizons Survey*

This workshop focuses on managing UAV data for long-term usability. Participants will learn file naming, folder structures, metadata practices, and storage strategies for large imagery datasets. The session also covers how to catalog UAV deliverables within GIS so data can be easily discovered, shared, and reused across projects.

Hands-On Tools for Sovereignty, Storytelling, and Environmental Decision-Making

Manisha Priyadarshini, *Program Earth*

This workshop trains participants in building Tribal-owned mapping infrastructure using open-source GIS tools such as QGIS and GitHub. Participants will work with state datasets while learning how to maintain Tribal data sovereignty through internal governance systems.

Telling Stories With Your Data Using ArcGIS StoryMaps

Lisa Benvenuti, *University of Redlands*

This workshop introduces ArcGIS StoryMaps as a tool for communicating data through maps, text, images, and multimedia. Participants will learn how to build a StoryMap and structure content for clear storytelling. The session focuses on best practices for presenting GIS work in accessible and engaging formats.

Workshop Descriptions

DAY 2: Listed in order of occurrence in the agenda

Enhancing Community Resilience Through GIS-Driven Catastrophe Modeling and Home Mitigation

Brenda Caloca, *California Department of Insurance*

This presentation offers an overview of key strategies for reducing wildfire risk, improving home mitigation, and navigating today's insurance market. Participants will receive practical guidance on finding and maintaining insurance coverage, along with approaches that support long-term, sustainable insurance stability for California homeowners.

Collecting Data with Survey123, Field Maps, and QuickCapture

Will Wagner, *University of Redlands*

This hands-on workshop demonstrates three ArcGIS mobile data collection tools: Survey123, Field Maps, and QuickCapture. Participants will explore how each supports different field workflows, including surveys, map-based collection, and rapid input. The session also shows how these tools integrate into broader GIS workflows.

Presenting Data with Dashboards

Julia Lenhardt, *University of Redlands*

This workshop introduces ArcGIS Dashboards for visualizing spatial and tabular data in interactive formats. Participants will learn how to design dashboards for monitoring, reporting, and communication. The focus is on transforming datasets into clear visuals for sharing with partners and decision-makers.

UAV LiDAR Fundamentals and Vendor Evaluation Workshop

Landon Blake, *Redefined Horizons Survey*

This workshop introduces UAV LiDAR technology, including what it measures, how it differs from photogrammetry, and when it is useful. Participants will learn key concepts such as accuracy, point density, and deliverable types. The session also outlines practical questions for evaluating LiDAR vendors and includes a sample data demonstration.

Presenters' Biographies

Althea Asaro



Althea Asaro is the statewide Native American cultural studies coordinator for Caltrans. She has nearly 15 years of experience in cultural

resources management and archaeology in California. She leads efforts to develop Tribal consultation guidance, policy, and best practices that strengthen government-to-government relationships and cultural resource protection.

Diania L. Caudell (Vernon)



Diania Caudell is a member of the San Luis Rey Band of Mission Indians and has been active with the California Indian Basketweavers' Association for nearly twenty years. She works with Tribal, state, and federal partners to protect traditional gathering rights and raise awareness about pesticide impacts on culturally significant plants.

Association for nearly twenty years. She works with Tribal, state, and federal partners to protect traditional gathering rights and raise awareness about pesticide impacts on culturally significant plants.

Courtney Ann Coyle



Courtney Coyle is an attorney specializing in Tribal cultural resource protection and environmental law. She represents Tribal governments in planning and policy matters and has contributed to landmark California legislation. Her work focuses on protecting cultural landscapes and elevating Tribal voices in decision-making.

governments in planning and policy matters and has contributed to landmark California legislation. Her work focuses on protecting cultural landscapes and elevating Tribal voices in decision-making.

Wade Crowfoot



Wade Crowfoot serves as California secretary for natural resources. He oversees state agencies responsible for protecting California's natural

resources and advises the Governor on environmental policy. He previously led climate and drought initiatives and served as CEO of the Water Foundation.

Nick Doose



Nick Doose is an archaeologist, GIS manager, and FAA-certified drone pilot with nearly 20 years of experience supporting Tribal cultural

resource management. His work integrates GIS, mapping, and emerging technologies to support Tribal consultation, planning, and stewardship.

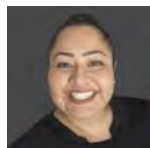
Thomas Crimmel



Thomas Crimmel is a GIS professional and research data specialist with CAL FIRE's Fire and Resource Assessment Program. His work focuses on geospatial

analysis, data management, and mapping systems that support wildfire assessment, resource planning, and statewide decision-making.

Brenda Caloca



Brenda Caloca has been at the California Department of Insurance over 10 years. As an outreach analyst, she manages efforts in Orange and San Diego counties.

Jocelyn Garcia



Jocelyn Garcia is a visual development artist, illustrator, and director of the short animated film Tule. A Big Valley Pomo and Mexican American

artist, her work focuses on themes of culture, history, and identity, aiming to highlight underrepresented communities.

Shasta Gaughen



Dr. Gaughen is Executive Director of the Pala Environmental Department and Pala Tribal Historic Preservation Office. She

leads Tribal environmental and climate initiatives and serves in multiple environmental protection and Tribal governance roles.

Eric Harper



Eric Harper is the IHS California Area GIS coordinator with more than 25 years of GIS experience. His background includes land

surveying, CAD systems, and geospatial infrastructure development supporting Tribal and federal health projects.

Julia Huddleson



Julia Huddleson is a historical archaeologist with CalTrans. She has worked with Caltrans since 1997 and serves as the statewide coordinator of a

confidential GIS application supporting cultural resources management.

Presenters' Biographies

Coach Jackson



Coach Jackson (Nanticoke/Tidewater) is an Indigenous aquaculture advocate working on seagrass restoration, clam gardens, and oyster reef

systems. She has over 20 years of experience in environmental justice, coastal policy, and community education.

Leece Oliver LaRue



Leece Oliver LaRue (they/he) is a Karuk and Shasta data sovereignty advocate and GIS professional. They work in digital repatriation,

Indigenous data governance, and language revitalization while supporting national Indigenous data initiatives.

Julia Lenhardt



Dr. Julia Lenhardt is a remote sensing and GIS specialist focused on ecosystem modeling and spatial analysis on agricultural lands in

California. She previously worked at Esri supporting imagery analysis tools and received the Outstanding Research Award from UC Irvine.

Presenters' Biographies

Helen Lopez



Helen Lopez is the deputy director of CAL FIRE's Tribal Affairs Program. With over 30 years of public service, her work focus on strengthening partnerships with Tribal governments and supporting collaboration in fire protection and resource management.

Carmen Lucas



Carmen Lucas (Kwaaymii) is a cultural leader, educator, and Tribal monitor with decades of experience in cultural resource protection. She has contributed to multiple National Register nominations and serves on the California Truth & Healing Council.

Miguel Luna



Miguel Luna is Chief Administrative Officer of the Fernandeño Tataviam Band of Mission Indians. He helps lead the tribe's climate resilience, conservation, and sustainable development efforts.

Starla Madrigal



Starla Madrigal is chairwoman of the California Indian Basketweavers' Association. She is a cultural educator and consultant dedicated to preserving and revitalizing traditional basket weaving and plant knowledge.

Kim Marcus



Kim Marcus is a Cahuilla and Serrano Elder and ceremonial leader who has been involved with the University of Redlands Native American Program.

He regularly participates in community cultural events, including Indigenous talking circles, bird singing, and traditional demonstrations.

Christina McCready



Christina McCready is a principal engineer with the California Department of Water Resources. She manages integrated data systems that improve access to statewide water and ecological data for planning and decision-making.

Donna Miranda-Begay



Dr. Donna Miranda-Begay is Tribal Chairwoman Emeritus of the Tübatulabal of Kern Valley and affiliated with the Tule River Reservation Yokut, Paiute, and Diné communities. She is CEO of California Tribal GIS, and a cultural practitioner and Tribal researcher focused on environmental justice, Tribal ecological knowledge, and Indigenous data sovereignty.

barplot(deer\$deer.observations)

Presenters' Biographies

Gabriela Morales



Gabriela Morales (they/them) is a GIS analyst at San Diego State University supporting the Collaborative of Native Nations for Climate

Transformation & Stewardship. Their work focuses on accessible geospatial tools for community engagement and climate communication.

Tara Ouitavon



Tara Ouitavon is a senior water resource control engineer with the State Water Resources Control Board. She leads SAFER Program's Northern

California efforts to support safe drinking water through technical assistance, funding coordination, and community engagement.

Alexander Paz



Alexander Paz is a Southern California-based GIS professional with expertise in geospatial systems, data integrity, and analysis. He

addresses complex data challenges to improve accuracy, efficiency, and real-world applicability of information systems.

Erica Pinto



Erica Pinto is Chairwoman of the Jamul Indian Village, one of the 13 tribes of the Kumeyaay Nation in San Diego County. She has served on the Tribal

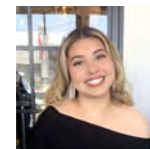
Council since 1997 and became the tribe's first elected woman Chairwoman in 2015.

Nóra Pulskamp



Nóra Pulskamp (Navajo) is Tsi'naajinii clan, and her maternal grandfather is Tódichi'ii'nii clan. Nóra has worked in Native higher education for 25 years and is currently serving as Tribal Liaison and Director of Native Student Programs at the University of Redlands.

Alma Quintero



Alma Quintero is a GIS analyst with the Collaborative of Native Nations for Climate Transformation & Stewardship. Her work

focuses on geospatial tools that support climate resilience, environmental planning, and community engagement.

Cynthia Ritmiller

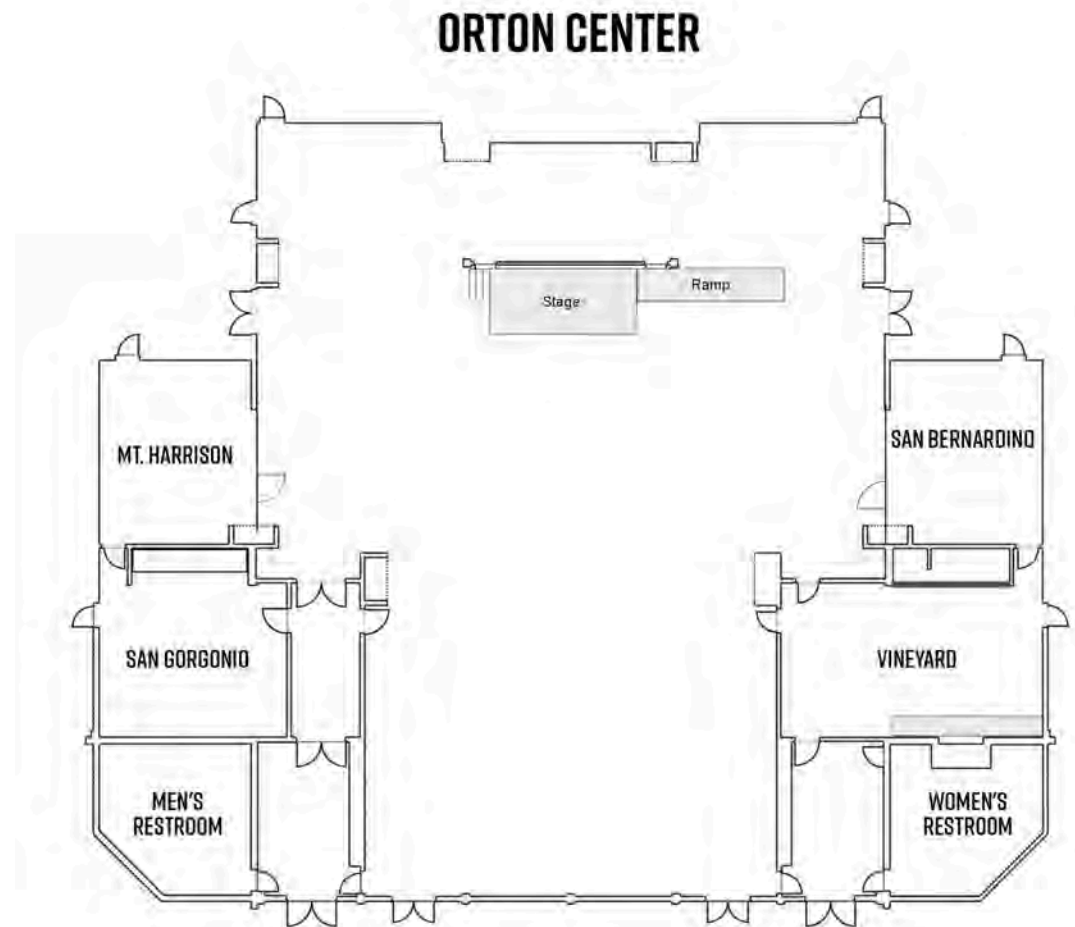
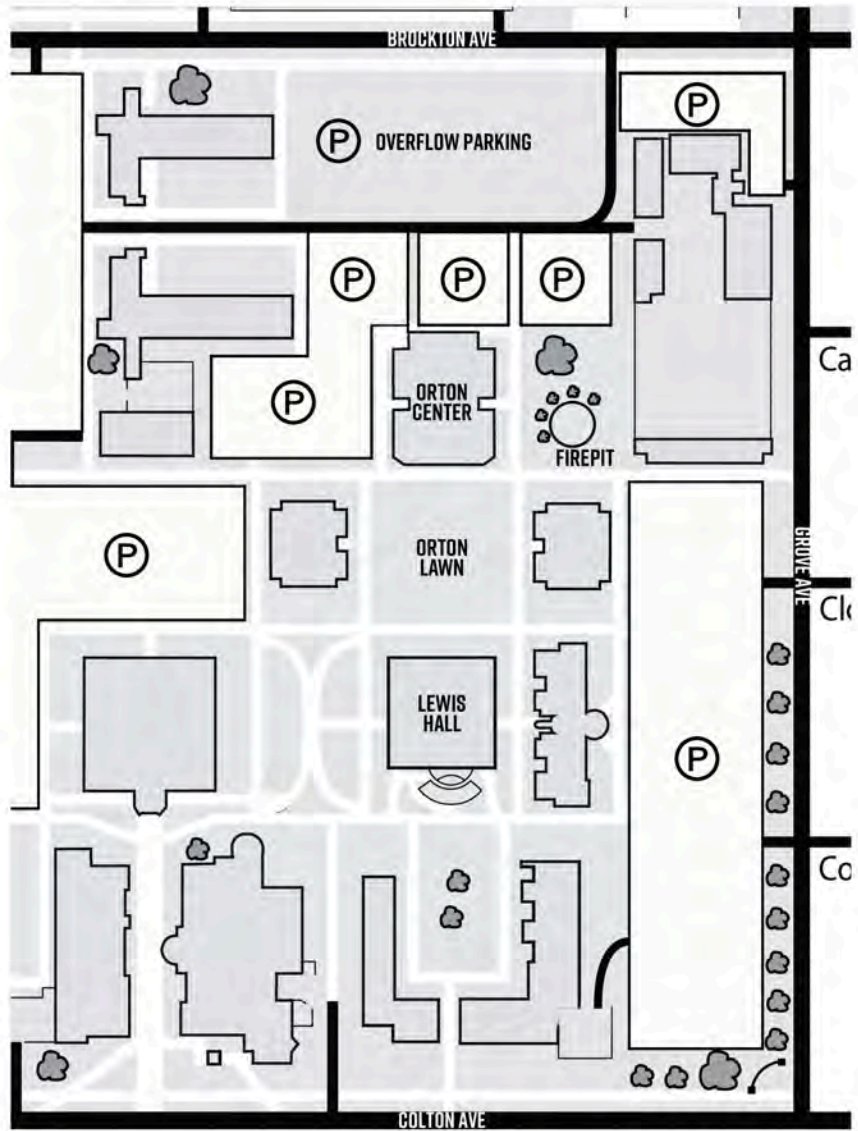


Cynthia Ritmiller has worked with the U.S. Geological Survey since 2010. She has contributed to national geospatial programs including U.S.

Topo Maps, 3D Elevation Program, and National Hydrography Dataset.

Venue Map 2

Venue Map 3



Sponsors

Exhibitors



California Native American Tribal GIS Summit 2026

Sponsors Circle



Vendors

- Begay's Arts and Crafts
- Calli Creations
- Native Avenue
- Native Hands
- Quiet Quail Books
- Red Eagle Medicine Wheel
- The Shop Kat
- WenSaks Designs
- Yannie's Arts and Crafts

Summit Lead Planners

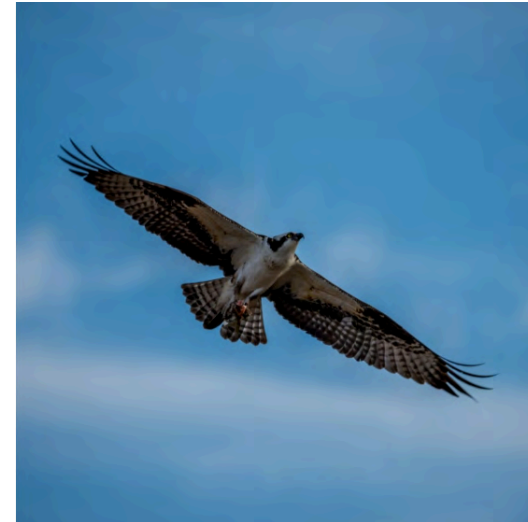
Lisa Benvenuti
Ana Canter
Chris Goh
Dr. Julia Lenhardt
Caitlin Marin

Lisa Marun
Dr. Donna Miranda-Begay
Nóra Pulskamp
Dr. Avijit Sarkar
Elizabeth Shulterbrandt

Planning Team

Curtis Alcantar
Emily Alejandrino
Althea Asaro
Nathan Blacksmith
Sarah Bliss
Janine Bird
Bennae Calac
Jessa Calderon
Barbara Cross
Cat Corrales
Louis Curson-Mayorga
Stephanie Dashiell
Chris Goh
Debbie Hernandez
Marcus Harner
Julia Huddleson
Coach Jackson
Bryce Lewis-Smith
Christy Marks
Jessica McCool
Rico Miranda
Laurie Monserrat
Gabriela Morales

Jessica Mosher
Joel Myhre
Kian Nahavandi
Sandra Nahua
Billy Nelms
Elissa Olimpi
Tara Quitavon
Bernice Paipa
Clare Pace
Andrea Perez
Rene Quiggle
Alma Quintero
Bernadette Quiroz
Jonathan Rodriguez
Richie Sayavong
Alex Shariatmadari
Ali Talakoob
Megan Thomson
Cristian Viveros
Elizabeth Wood
Ariana Yanez
Zee Zetino
Zoe Varner



Soar Like A Hawk

I hear the music of the round house
I hear the music of the bird singers
I hear the music of the hand game singers
I hear the music of the elderberry clap sticks
I hear the music of the hawk's wings against the wind
I hear the music of the ocean, rivers, and headwaters
I hope we all can hear the music of earth
I hope we can work together
In a good way, the circle that connects us
Our ancestors are proud of the work we do
Our ancestors provided today's guidance
We respect the airborne, land and underground animals, and water life
I hope that we all "Soar Like A Hawk"

A handwritten signature in black ink, appearing to read "Donna Miranda-Begay". The signature is fluid and cursive, with a long horizontal stroke at the end.

Dr. Donna Miranda-Begay

Tübatulabals of Kern Valley, Tule River Yokut, Paiute, and Dine'



California

Tribal



GIS

UNIVERSITY OF
Redlands
Native Student Programs