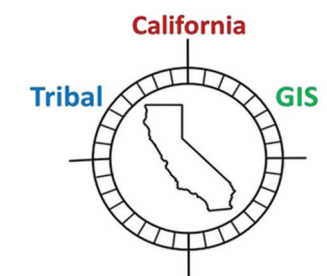






CO-HOSTED BY:



CALIFORNIA NATIVE AMERICAN TRIBAL GIS SUMMIT 2025 | DAY 1 AGENDA

Start Time	Byron Sher (2nd floor)	Sierra (2nd floor)	Klamath (2nd floor)	Training Room 1 & 2 (1st floor)
8:00 am	Opening and Welcome • <i>Honorable Raquel Williams, Vice-President, Wilton Rancheria Tribe</i> • <i>E. Joaquin Esquivel, State Water Board Chair</i> • <i>Adriana Renteria, State Water Board Director of the Office of Public Engagement, Equity, and Tribal Affairs</i> • <i>Nathan Blacksmith, State Water Board Tribal Affairs Program Manager</i> • <i>Donna Miranda-Begay, CEO, CA Tribal GIS</i> • <i>Ronald Lodgepole, Regional Geospatial Coordinator, U.S. Bureau of Indian Affairs Pacific Region</i>			
8:30 am	Opening Keynote <i>Jennifer Malone, Wukchumni Tribal Honored Elder, CIBA Board Member, Traditional Basket Weaver</i>			
9:05 am	Use of a GIS-based Tribal Historic Resource Information System (THRIS) for preservation of cultural landscape and natural resources management <i>Louis Curson-Mayorga, United Auburn Indian Community</i>			
9:35 am	Indigenizing Mapping with the Tribal Marine Stewards Network <i>Sophie Wilhoit, GIS Specialist</i>			
10:10 am	Using the Water Board’s Tribal Water Data Map to Understand Pollution in Your Area <i>Anna Holder and Hannah Merges, State Water Board</i> <i>Sarah Ryan, Big Valley Band of Pomo Indians</i>			
10:50 am	20 minute break			
11:10 am	Tribal Cultural Resources and Consultation: Findings from Cannabis Policy Research <i>Seth LaRosa, UC Berkeley</i> <i>Jeremy Sorgen, Northeastern University</i>			
11:40 am	Lunch			
12:45 pm	Data Access and the CA State Geoportal <i>Lothar Petrik, Geography Information Officer (GIO)</i>	Getting Started with ArcGIS: Licensing, Applications, Demonstrations (Workshop) <i>Chris Goh and Paulina Mnev, Esri</i>	Restoring Balance: Ecocultural Mapping and Water Equity in the Delta (Workshop) <i>Ted Grantham, Witske Medema, Jill Fantauzza, Sunny Singhal, and Sydney Moss</i> <i>UC Berkeley COEQWAL Project</i>	
1:10 pm	CalEnviroScreen: Using California’s Environmental Justice Tool <i>Zoe Varner, CalEPA Office of Environmental Health Hazard Assessment (OEHHA)</i>			
1:25 pm	Overview of the National Wetlands Inventory (NWI) and Mapping Tribal Lands <i>Emilia Bartnick, US Fish and Wildlife Service (USFWS)</i>			
2:10 pm	Tribal Portal for the Vulnerable Communities Platform (VCP) <i>Bryce Lewis-Smith, Governor’s Office of Land Use and Climate Innovation (LCI)</i>			
2:50 pm	20 minute break			
3:10 pm	LiDAR Adds a New Dimension to California’s Water Map <i>Jane Schafer-Kramer, CA Department of Water Resources (DWR)</i>	Getting Started with ArcGIS: Licensing, Applications, Demonstrations (Workshop) <i>Chris Goh and Paulina Mnev, Esri</i>		
3:45 pm	Unearthing Allotment Data: Building Tools for Stewardship on CA’s Public Domain Allotments <i>Ryan Boynton, UC Davis</i>			
4:10 pm	Wrap-up / Summarizing the day			
5:00 pm	End of Day 1			

DAY 2 AGENDA | CALIFORNIA NATIVE AMERICAN TRIBAL GIS SUMMIT 2025

Start Time	Byron Sher (2nd floor)	Sierra (2nd floor)	Klamath (2nd floor)	Training Room 1 & 2 (1st floor)
8:00 am	Opening and Welcome <i>Eileen Boughton, Pomo Yokayo/Robinson Traditional Dancer, Pow Wow Dancer, Teacher, Advocate for Indigenous and Labor Issues</i>			
8:10 am	Native American Graves Protection and Repatriation Act (NAGPRA) Update and Map <i>Samantha Cypret, Executive Director, Tribal Relations, California State University (CSU) Chancellor's Office</i>			
8:35 am	Keynote: Strengthening Partnerships with Tribes to Reach the Goal of 30x30 with CA Natural Resources Agency (CNRA) <i>Geneva E. B. Thompson, Deputy Secretary for Tribal Affairs Meghan Hertel, Deputy Secretary for Biodiversity & Habitat</i>			
9:10 am	Uses of GIS in the Tolowa Dee-ni Nation <i>Randall Race Richards, Tribal Resource Specialist</i>			
9:55 am	Recovering the Nium Trail: Interdisciplinary Mapping of Cultural Landscapes and Trailscapes <i>Crystal West and Jesse Valdez, North Fork Mono Tribe</i>			
10:25 am	20 minute break			
10:50 am	Listening session: FAIR and CARE principles in LiDAR, imagery, and derived products <i>Nathaniel Roth and Crystal Blue, CA Department of Conservation</i>			
11:40 am	Lunch			
12:40 pm	Discovering the National Map <i>Drew Decker, US Geological Survey (USGS)</i>		Getting Started with ArcGIS: Licensing, Applications, Demonstrations (Workshop) <i>Chris Goh and Paulina Mnev, Esri</i>	Two-eyed Seeing in Earth Observations: Remote Sensing Workshop <i>Elaine (Lan Yin) Hsiao, He Yin, Finn Machuga, and Jackson Miller, Kent State University</i>
1:15 pm	GIS and Emergency Management <i>Eric Howard and Alex Shariatmadari, CA Office of Emergency Services (CalOES)</i>	Using GIS to Advance the Goals of the CA Agricultural Land Equity Task Force <i>Camille Frazier, CA Strategic Growth Council Lawrence Harlan, Fort Bidwell Indian Community Council</i>		
2:15 pm	20 minute break			
2:35 pm	GIS Tools and Employment/Careers in GIS <i>Brandon Littlejohn, CA Department of Parks and Recreation Jane Schafer-Kramer, CA Department of Water Resources (DWR)</i>	Emotion Place Attachment Mapping (EPAM) <i>Dr. Jessica Mosher</i>	Getting Started with ArcGIS: Licensing, Applications, Demonstrations (Workshop) <i>Chris Goh and Paulina Mnev, Esri</i>	Two-eyed Seeing in Earth Observations: Remote Sensing Workshop <i>Elaine (Lan Yin) Hsiao, He Yin, Finn Machuga, and Jackson Miller, Kent State University</i>
3:10 pm	Survey123 for Collaborative 6PPD-q Monitoring Strategy in California's North Coast Region <i>Madeleine Dow, State Water Board</i>	Culturally Grounded Support and Pathways in GIS <i>Nóra Pulskamp, University of Redlands</i>		
3:35 pm	Summit Closing: Follow up and Outcomes			
5:00 pm	End of Summit			

All sessions will be recorded, and sessions taking place in the Byron Sher Auditorium will be livestreamed at video.calepa.ca.gov on both days.



PRESENTATION DESCRIPTIONS

Listed in order of occurrence in the agenda

DAY 1

Use of a GIS-based Tribal Historic Resource Information System (THRIS) for preservation of cultural landscape and natural resources management

Louis Curson-Mayorga, Tribal Historic Preservation Office (THPO), United Auburn Indian Community

<https://www.auburnrancheria.com/>

This presentation will explore how our Tribal Historic Resource Information System (THRIS) supports our Tribe’s cultural and environmental responsibilities under NAGPRA, CEQA, and Section 106. THRIS is a GIS-based internal system we developed to track projects, centralize sensitive data, and streamline responses to consultation requests. We’ll show how we use spatial analysis to assess potential impacts, generate maps for consultation, and integrate external datasets like CHRIS. This talk will walk through our workflows, tools, and the real-world challenges we’ve faced—such as confidentiality, access to information, and limited staff capacity-and how we are addressing them through technology and advocacy.

Indigenizing Mapping with the Tribal Marine Stewards Network

Sophie Wilhoit, GIS Specialist, Tribal Marine Stewards Network

<https://tribalmsn.org/>

The TMSN is a partnership of five Indigenous nations in California that are building capacity to apply the skills and tools of GIS and map-making to revitalize their connection to place and stewardship responsibilities. The role of the GIS catalyst was created to empower Tribal citizens, staff, and stewards, with the knowledge and skills of GIS to restore and re-story their territories from their own perspectives and voices. TMSN is currently using GIS for cultural mapping to support ocean stewardship, cultural preservation, legal issues, co-management, education, recognition, and reconciliation.

Using the Water Board’s Tribal Water Data Map to Understand Pollution in Your Area

Anna Holder, Open Data Science, Equity & Tribal Coordinator, State Water Board

Hannah Merges, CA Sea Grant Fellow, State Water Board

Sarah Ryan, Environmental Director, Big Valley Band of Pomo Indians

<https://cawaterboarddatacenter.github.io/tribal-water-data-map-manual/>

The CA Water Board’s Office of Information Management and Analysis, serves as an advocate for FAIR and CARE data management and use, and provides transparency of the Water Boards data infrastructure. Over the past four years, OIMA has been working with the Big Valley Band of Pomo Indians to co-create tools that increase awareness of and access to data that intersect with Tribal



matters and needs and to support Tribal environmental and/or water related work. During this session we will provide an overview of the Tribal Water Data Map and User Manual and demonstrate how to navigate both resources. The majority of time will be reserved for attendees to use the resources, ask questions, and to make requests or suggest recommendations for improvement for future versions of each resource.

Tribal Cultural Resources and Consultation: Findings from Cannabis Policy Research

Seth LaRosa, PhD Candidate, UC Berkeley

Jeremy Sorgen, PhD, Assistant Professor, Northeastern University

<https://crc.berkeley.edu>

This presentation draws on findings from a multi-year research project examining Tribal Cultural Resource (TCR) protections under California’s cannabis permitting system. Through interviews with Tribal representatives, agency staff, and local officials, we assess the limitations of existing mapping tools and consultation practices, including implementation of AB 52. We discuss how GIS and participatory mapping can support stronger consultation and Tribal sovereignty, and we offer recommendations, based on community-engaged research, for reforming how the state identifies and consults with Tribes on land use decisions.

Restoring Balance: Ecocultural Mapping and Water Equity in the Delta (Workshop)

Dr. Ted Grantham, Witske Medema, Jill Fantauzza, Sunny Singhal, and Sydney Moss, UC Berkeley COEQWAL Project

<https://coeqwal.berkeley.edu/>

This interactive workshop invites participants to reflect on and share their personal and cultural relationships to water. Grounded in the COEQWAL (Collaboratory for Equity in Water Allocations) initiative, the aim of this session is to explore how these relationships can be expressed in visual and spatial forms. While not limited to the California Delta, this process will support broader insights into how Indigenous and community-rooted understandings of land and water can inform ecocultural mapping for water equity.

Together, we will surface the language used to describe Tribal relationships and values of water, identify specific ecocultural uses and meanings tied to water and land, and explore ways to represent these in a geospatial framework. Through hands-on activities and guided reflection, this workshop aims to co-create foundational ideas that respect cultural knowledge and inspire more inclusive, values-based mapping of water systems. A key focus will be on ensuring these maps are useful and accessible to Tribes, empowering more effective participation in water management decisions and supporting Tribal data sovereignty.

CalEnviroScreen: Using California’s Environmental Justice Tool

Zoe Varner, Research Scientist, CalEPA Office of Environmental Health Hazard Assessment (OEHHA)

<https://oehha.ca.gov/>

In this presentation OEHHA staff will demonstrate the CalEnviroScreen environmental justice mapping tool and how tribes can provide input on the tools next update. We will go over how we have worked with CA Tribes to fill data gaps and update our mapping tools to reflect land acquisition by Tribes since 2022. The presentation will also illustrate how CalEnviroScreen can be used by Tribes to apply for grants and to understand environmental justice conditions in their community. We will additionally solicit audience feedback on proposed updates to the way CalEnviroScreen characterizes Tribal drinking water while maintaining data sovereignty.



Overview of the National Wetlands Inventory (NWI) and Mapping Tribal Lands

Emilia Bartnick, Pacific Southwest and Southeast Regional Wetlands Coordinator, US Fish and Wildlife Service (USFWS)

<https://www.fws.gov/program/national-wetlands-inventory>

I am excited to propose a presentation focused on supporting Tribes in the development of their own geospatial datasets. As a Regional Wetland Coordinator and our Tribal Outreach Coordinator, I am passionate about strengthening Tribal relationships and promoting data sovereignty through collaborative mapping and digital dataset creation. This presentation will highlight the expanded capacity of the National Wetlands Inventory (NWI) to engage with and support Tribal communities and will explore the many advantages that come with building locally driven geospatial resources. My goal is to share practical strategies, success stories, and tools that can empower Tribes to create and manage their own data in ways that serve their unique needs and priorities.

Tribal Portal for the Vulnerable Communities Platform (VCP)

Bryce Lewis-Smith, Senior Tribal Research Engagement Specialist, Governor’s Office of Land Use and Climate Innovation (LCI)

<https://lci.ca.gov/climate/icarp/vulnerable-communities.html>

The Vulnerable Communities Platform (VCP) is a new tool that is in development by the Governor’s Office of Land Use and Climate Innovation (LCI) to help identify California communities most vulnerable to wildfire, extreme heat, flooding, sea level rise, and drought. We will demonstrate the forthcoming platform and explore the potential for a Tribal GIS Portal within the VCP. This portal could empower Tribal GIS users to securely access, use, and integrate VCP data with their own, supporting self-determined, culturally informed climate strategies.

Getting Started with ArcGIS: Licensing, Applications, Demonstrations (Workshop)

Chris Goh and Paulina Mnev, Esri

<https://www.esri.com/en-us/industries/tribal/overview>

Overview of Esri licensing and applications with technical demonstrations. Presentations will highlight the various pathways for licensing that tribal entities can pursue, which include federally recognized tribes, state recognized tribes, and other organizations. Additionally, technical demonstrations will highlight the flexible utilization of ArcGIS Online and ArcGIS Enterprise with the various applications that are increasing in use across Native Nations. These demonstrations will highlight the use of StoryMaps, Field Applications, and web sharing. Lastly, there will be time allocated for open office hours and in-person training through our Learn ArcGIS catalog.

LiDAR Adds a New Dimension to California’s Water Map

Jane Schafer-Kramer, CA Department of Water Resources (DWR)

<https://data.cnra.ca.gov/dataset/national-hydrography-dataset-nhd>

The National Hydrography Dataset was created in the 20th century by digitizing blue lines on US Geological Survey (USGS) paper topography maps at the 1:24,000 scale. Ten years ago, the California Department of Water Resources (DWR) took on the role of state data steward, using GIS technology and aerial imagery to update the dataset. Two years ago, USGS announced the transition to



the 3D Hydrography Program that uses high quality LiDAR for deriving the channel lines and waterbody polygons. This improved water mapping data will serve as a framework for scientific analysis and flood modeling. DWR seeks local knowledge experts and reference datasets to help guide this work while respecting data sovereignty.

Unearthing Allotment Data: Building Tools for Stewardship on CA’s Public Domain Allotments

Ryan Boynton, GIS Programmer, UC Davis

<https://pdallotments.ucdavis.edu/public-domain-allotments>

Over the past three years, our team gathered and organized data to support allottees of California’s Public Domain Allotments—lands often lacking accessible information. We compiled 1990s biological inventories, BIA Title Status Reports, georeferenced historic maps, and conducted new ecological assessments. This talk will cover allotment locations, vegetation, fire history, climate projections, and access. The result is a set of individualized reports with practical, site-specific information—maps, fire intervals, ecological conditions, and climate risks—to support informed, resilient land stewardship.

DAY 2

Keynote: Strengthening Partnerships with Tribes to Reach the Goal of 30x30 with CA Natural Resources Agency (CNRA)

Geneva E. B. Thompson, CNRA Deputy Secretary for Tribal Affairs

Meghan Hertel, CNRA Deputy Secretary for Biodiversity & Habitat

<https://resources.ca.gov/>

California has set the goal to conserve 30% of California’s lands and coastal waters by 2030, also known as 30x30. To reach this goal, it is essential to strengthen the State’s partnership with California Native American tribes. Tribal leadership, expertise, and stewardship are critical to addressing the climate and biodiversity crisis facing us today. Tribal partnership includes the State identifying opportunities to advance tribal access, collaboration, and ancestral land return. The California Natural Resources Agency’s presentation will discuss the Agency’s Pathways to 30x30 and the draft Tribal Stewardship Policy as key tools to return lands to tribes and their stewardship to support the unique biodiversity across the State.

Uses of GIS in the Tolowa Dee-ni Nation

Randall Race Richards, Tribal Resource Specialist, Tolowa Dee-ni Nation

<https://www.tolowa.gov/>

The presentation will quickly go over how we use GIS the equipment and projects that benefit it whilst being very general. Ultimately a brief discussion on the capabilities we’ve found useful, and where we are hoping to head next in the world of GIS.



Listening session: FAIR and CARE principles in LiDAR, imagery, and derived products

Nathaniel Roth, GISP and Scientific Data Advisor, CA Department of Conservation
Crystal Blue, Tribal Liaison, CA Department of Conservation

<https://www.conservation.ca.gov/>

LiDAR, imagery, and derived products have become foundational for state scientists and natural resource managers. Similarly, these data could have great value as a resource for Tribes in cultural resource protection, land and environmental protection, and planning. The use of these data to benefit Tribal governments, natural resource management, emergency response, and ecological recovery will be dependent on developing both the data resources and a skilled and ethical user community. Join us for a listening session and collaborative discussion ensuring implementation of FAIR (Findable, Accessible, Interoperable, and Reusable) and CARE (Collective Benefit, Authority to Control, Responsibility, and Ethics) principles in the use of these data, as well as share insight on ideas and concerns.

Recovering the Nium Trail: Interdisciplinary Mapping of Cultural Landscapes and Trailscapes

Crystal West and Jesse Valdez, North Fork Mono Tribe

<https://northforkmonotribe.org>

This presentation explores how creating GIS layers from Tribal Knowledge, ethnographic data, georeferenced historic maps, and archaeology can re-map or reclaim an extensive Indigenous travel corridor. The Mono Trail is a vast “network” of trails interconnecting to the main stem (Nium Trail) which follows the north side of the San Joaquin River from its inception near Mammoth Mountain to the Coast Range. The study used collaborative research with the North Fork Mono Tribe and ground truthing with Councilmember Jesse Valdez to map the route. The trail begins “at the top of the world” at over 10,000 feet in elevation at an alpine lake called Wiitcunap. Come join us along the Nium Trail.

Discovering the National Map

Drew Decker, National Map Liaison, US Geological Survey (USGS)

www.usgs.gov

The National Map presents a suite of products, services, and applications and provides public access to geospatial data representing boundaries, elevation, geographic names, hydrography, land cover, orthoimagery, structures, and transportation. This presentation will provide updates on major National Map products and applications. These include new elevation and hydrography data, GIS-ready downloadable data and web services, web-based tools for data visualization and custom on-demand topographic map generation, and crowdsourced structures data.



Two-eyed Seeing in Earth Observations: Remote Sensing Workshop

Dr. Elaine (Lan Yin) Hsiao, Assistant Professor, Kent State University of Peace and Conflict Studies

Dr. He Yin, Assistant Professor, Kent State University Geography Department

Finn Machuga and Jackson Miller, Student Researchers, Kent State University

<https://www.kent.edu/esdri/2024-seed-grant-recipients-hsiao>

The presentation focuses on development of Earth observation skills that can be utilized for LandBack efforts. The priority of the presentation is a workshop where attendees can gain hands-on experience with remote sensing skills. These technologies can be utilized to monitor land use changes, wildfire impacts, and vegetation health.

GIS and Emergency Management

Eric Howard, Geospatial Data Scientist, CA Office of Emergency Services (CalOES)

Ilex Shariatmadari, Senior Emergency Services Coordinator, CA Office of Emergency Services (CalOES)

<https://www.caloes.ca.gov/>

This presentation will explore how GIS can be used to support all four phases of emergency management—mitigation, preparedness, response, and recovery—through real-world examples and workflows. We will highlight key GIS data sharing tools and initiatives that facilitate timely and effective information exchange across California. Participants will gain insight into how these tools can be used to enhance coordination, improve decision-making, and support community resilience before, during, and after disasters.

Using GIS to Advance the Goals of the CA Agricultural Land Equity Task Force

Camille Frazier, Agricultural Land Equity Program Manager, CA Strategic Growth Council

Lawrence Harlan, Treasurer, Fort Bidwell Indian Community Council

<https://sgc.ca.gov/initiatives/alei/>

The Agricultural Land Equity Task Force is a 13-member, public body charged with submitting recommendations to the CA Governor and Legislature about how to equitably increase access to land for food production and traditional tribal agricultural uses. As part of this process, Task Force members have emphasized the need for land return to facilitate the cultivation of culturally important foods, fibers, medicines, and ceremony. The Task Force is interested in talking with GIS specialists about how to use the technology to advance land return for these efforts, to share relevant draft recommendations, and to ask what is needed from the State in relation to mapping and knowledge that will facilitate land return. For more info on the Task Force: <https://sgc.ca.gov/initiatives/alei/>.

GIS Tools and Employment/Careers in GIS

Brandon Littlejohn, CA Department of Parks and Recreation

Jane Schafer-Kramer, CA Department of Water Resources (DWR)

<https://www.parks.ca.gov/jobs>

<https://water.ca.gov/About/Careers>

GIS technology is used widely in the agencies and departments of California state service, but there is no state job classification specific to GIS work. Instead, job duties that include GIS tasks are embedded within the scope of many different classifications.



So how does a job seeker know how to find state government GIS job openings? Brandon will explain the process of applying for a state job and share some resources available to help guide the GIS job seeker. Jane will provide examples of the job classifications that are often used by the state departments to hire workers trained and skilled in GIS. This session can help guide those considering public service with the state with career planning and help further the goal of bringing more Native Americans into state service.

Emotion Place Attachment Mapping (EPAM)

Dr. Jessica Mosher, MBA DrPH

Emotional Place Attachment Mapping (EPAM) refers to the integration of geolocation-based emotional response data into planning and decision-making processes. Rooted in the concept of Topophilia—a term that describes the emotional bond people develop with specific places—EPAM recognizes the importance of these connections in Tribal land and resource management. EPAM helps ensure that emotional and cultural values tied to land are not overlooked. By incorporating these insights, Tribal communities can support more meaningful planning, strengthen community engagement, and honor Indigenous relationships to place.

Culturally Grounded Support and Pathways in GIS

Nóra Pulskamp (Navajo), Tribal Liaison & Director of Native Student Programs, University of Redlands

<https://www.redlands.edu/nativestudentprograms>
<https://www.redlands.edu/academics/undergraduate-programs/accelerated-geographic-information-science-pathway>

This presentation will provide an overview of Native Student Programs at the University of Redlands, a student-centered initiative that offers holistic, culturally grounded support to Native American/Alaska Native/Native Hawaiian students. Attendees will learn about our commitment to fostering a sense of belonging, community connection, and academic success through mentorship, cultural programming, and partnerships with tribal communities. The session will also highlight the University’s Accelerated Geographic Information Systems (GIS) Pathway program—a unique opportunity that equips students with cutting-edge technical skills and real-world experience in a high-demand field, offering a promising career track for Native students.

Survey123 for Collaborative 6PPD-q Monitoring Strategy in California’s North Coast Region

Madeleine Dow, Scientific Aid, State Water Board

waterboards.ca.gov/water_issues/programs/cec/index.html

The State Water Board’s Constituents of Emerging Concern (CEC) Program will share the progress of an interagency workgroup (including state, regional, and Tribal participation) that is developing a water quality monitoring plan for the emerging contaminant known as 6PPD-quinone. This workgroup’s efforts are a case study in the use of GIS tools such as Survey123 for water quality monitoring and management strategies. The CEC Program’s participation is also part of the State Water Board’s new strategy aiming to manage constituents of emerging concern in a more collaborative and equitable way.



BIOGRAPHIES OF PRESENTERS

DAY 1



Honored Wilton Rancheria Vice-Chairwoman **Raquel Williams** will provide Tribal Opening.



E. Joaquin Esquivel as appointed to the State Water Resources Control Board by Governor Jerry Brown in March 2017, designated by Governor Gavin Newsom as Chair in February 2019, and reappointed to the board by Governor Newsom in 2021. Previously, he served as Assistant Secretary for federal water policy at the California Natural Resources Agency in the Governor’s Washington, D.C. office, where he facilitated the development of policy priorities between the agency, the Governor’s Office, the California Congressional delegation, and federal stakeholder agencies.

For more than eight years prior to that, Joaquin worked for U.S. Senator Barbara Boxer of California, most recently as her legislative assistant covering the agriculture, Native American, water, oceans, and nutrition portfolios, in addition to being the director of Information and Technology.

He was born and raised in California’s Coachella Valley. He holds a BA from the University of California, Santa Barbara in English.



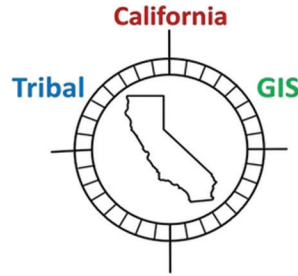
Adriana Renteria is the Director of the Office of Public Engagement, Equity, and Tribal Affairs at the California State Water Resources Control Board. The Office of Public Engagement, Equity, and Tribal Affairs ensures the Water Boards’ decision-making processes involve the public and uplift perspectives from environmental justice communities and California Native American Tribes. Previously, Adriana was Regional Water Manager at the Community Water Center and Program Coordinator for the People of Color Sustainability Collective at the UC Santa Cruz American Indian Resource Center. They have years of experience supporting community engagement in water governance and they have developed and facilitated workshops, programs, and events related to environmental justice, food justice, Human Right to Water, groundwater management, racial equity, tribal affairs, local water district elections, language access, and more. pronouns: she/they



Nathan Blacksmith, an enrolled member of the Sisseton Wahpeton Oyate of the Lake Traverse Reservation in South Dakota, brings a wealth of experience in leadership, traditional healing practices, and community engagement. As a second-generation urban American Indian, Nathan’s background is deeply informed by his family’s participation in the Indian Relocation Act of 1956, which relocated them from the Lake Traverse Reservation to Oakland, California. This unique experience has given him a profound understanding of the complex relationships between Native communities and government entities.

Nathan holds a Master of Business Administration (MBA) with an emphasis in leadership and a Bachelor’s degree in psychology. As Chief Traditional Health Officer at the Sacramento Native American Health Center, Nathan successfully led efforts to assess and incorporate traditional healing practices into clinical care. His work as Deputy Director for the Friendship House Association of American Indians further solidified his expertise in navigating both cultural and governmental frameworks, particularly in substance use disorder treatment.

Nathan’s extensive experience in both healthcare and community leadership will be instrumental in fostering stronger, culturally respectful relationships between the state and California tribes. His commitment to traditional healing and cultural preservation, combined with his ability to bridge diverse systems, positions him as an advocate for effective and culturally informed policy development and collaboration. Nathan also continues to serve on the Board of Directors for the Bay Area Native American Health Center, where he remains dedicated to promoting the well-being of Native communities across the state.



Dr. Donna Miranda-Begay—Tübatulabals of Kern Valley, Tribal Chairwoman Emeritus. Tribal affiliation: Tübatulabal, Tule River Reservation Yokut, Paiute, and Dine’. Tübatulabal cultural practitioner, conservation and cultural bearer, and Tribal researcher. State government technologist for over 28 years, Chief Information Office for Jackson Rancheria Band of Miwoks, and IT Strategic Tribal Consultant. Served on several State Tribal Advisory Committees, including DWR Tribal Water Summit Planning and Cal/EP Tribal Advisory Committee (2004 – 2012). Awarded California State Assembly and Senate proclamations endorsed by California Tribal Chairperson Association in 2018, 2023, and 2024 for her work in the protection of cultural landscapes, environmental justice, advocacy of Tribal ecological knowledge (TEK) for improved natural resources management, and innovated technologies for Tribal communities. Currently, Chief Executive Officer for CA Tribal GIS (non-profit) that provides CA Native American Tribes (both federally and non-federally recognize) GIS knowledge build to assist with natural resources management, protection of cultural landscapes, and environmental justice support. Founder of Inaugural California Native American Tribal GIS Summit 2025.

Website: www.catribalgis.org



Ronnie Lodgepole—US DOI-BIA Pacific Region Geospatial Coordinator. He is an enrolled member of the Chippewa Cree tribe from the Rocky Boy Reservation in Montana. the Branch of Geospatial Support is to assist Tribal governments and Indian Affairs to manage the cultural and natural resources of Indian Country by providing geographic information systems software, training, and technical support.



Honored Elder and Traditional Basket Weaver—Jennifer Malone is from the Wukchumni Tribe and has been weaving for 25 years, having learned from Beatrice Wilcox, her grandmother who was Master Weaver. Jennifer is active within her tribal community, teaching both basket weaving and working on keeping the Wukchumni language alive. Jennifer works with several organizations in her local community, serving as the cultural advisor for Sequoia National Park’s annual Go Native event. Jennifer is proud to have served on the California Indian Basket Weavers Association for over a decade.

Website: www.ciba.org



Louis Curson-Mayorga, United Auburn Indian Community - Cultural Regulatory and GIS Specialist, Tribal Historic Preservation Department, United Auburn Indian Community of the Auburn Rancheria, The United Auburn Indian Community’s Tribal Historic Preservation Department identifies, preserves, and protects Miwok and Nisenan culture and heritage, tribal cultural resources, the Tribe’s historic and cultural knowledge base, and its archives. Together, the Tribal Historic Preservation Officer and Department Director coordinate staff activities within the divisions of the Preservation Department. These divisions include administration, cultural regulatory activities, tribal heritage and monitoring, repatriation and research, and community heritage projects and events.

CALIFORNIA NATIVE AMERICAN TRIBAL GIS SUMMIT 2025

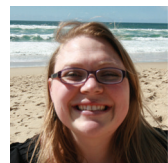


Jill Sherman-Warne—an enrolled Hoopa Tribal Member and served on her Tribal Council for a total of 4 years. Jill is the Executive Director of the Native American Environmental Protection Coalition (NAEPC). She regularly works with 29 tribes throughout California, Arizona, Nevada and New Mexico. She graduated from Humboldt State and built her respected professional reputation serving tribes in a variety of capacities from language learning, vocational rehabilitation, grant writing, environmental planning and emergency response. Jill immerses her energy into building scalable tribal programs to increase and strength the tribal sovereignty. Jill's cadre of skills allowed her to enjoy working directly as a tribal staff member, on congressional campaigns, state commissions and on local and regional tribal boards and committees. Jill's work specialty is increasing the professional capacity of tribal environmental staff and engaging tribes on critical environmental issues. In 2022 Ms. Sherman-Warne became the first Native American to receive an appointment to serve on the California Air Resources Board's Environmental Justice Advisory Committee. In 2023 received a federal appointment to the Clean Air Advisory Committee. Jill also serves on the California EPA Tribal Advisory Committee. Jill also serves on the College of the Redwoods Foundation Board. Ms. Sherman-Warne is proud of her previous 15 year tenure on the California Native American Heritage Commission.



Sophie Wilhoit is currently the GIS specialist for the Tribal Marine Stewards Network and also teaches GIS at the local community college for part of the year. She has a master's in Geographic Information Science from Kent State University and worked for the National Park Service for 8 years managing invasive plants and its corresponding GIS data . She lives on the Ancestral land of the Lower Elwha Klallam People (Port Angeles, WA) and enjoys surfing, free diving and biking.

Website: www.tribalmsn.org



Anna Holder (she/her) is the Open Data Science, Equity & Tribal Coordinator for the Office of Information Management and Analysis (OIMA) at the California State Water Resources Control Board. Anna is leading the Office's statewide Tribal water data initiative and engagement efforts and is working to apply open science and equity lessons learned through that process at a larger scale to support all SWAMP Statewide Monitoring Programs, OIMA, and the Water Boards as a whole. Anna obtained her M.S. and B.S. from California State University, Monterey Bay in Applied Marine and Watershed Science. Regardless of role, Anna uses data science, ecology, and science communication to inform the sustainable and equitable management of California's natural resources.

Website: <https://cawaterboarddatacenter.github.io/tribal-water-data-map-manual/>

HONORING PLACE, EMPOWERING NATIONS



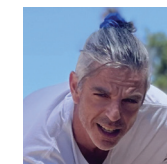
Sarah Ryan, she/her) is the Environmental Director and Emergency Management Director at Big Valley Band of Pomo Indians. She works at the nexus of science and policy to protect natural resources. The Big Valley EPA Programs she directs include monitoring for cyanotoxins in water and fish tissue and ensuring the data are used in Clean Water Act 305(d) Integrated Reports. In addition to her Environmental Director role, Sarah is also a Member of the CalEPA Tribal Advisory Committee, Founder and Lead of CA issues Workgroup of the US EPA Region 9 Regional Tribal Operations Committee (RTOC), and Co-Chair of California Cyanobacteria Harmful Algal Bloom Network.

Website: <https://cawaterboarddatacenter.github.io/tribal-water-data-map-manual/>



Hannah Merges (she/her) is trained as a quantitative marine ecologist, with research experience spanning from the Maryland coastal bays to Utila, Honduras, to Moorea, French Polynesia, and most recently California. She earned her B.S. at Ursinus College in Pennsylvania and her M.S. from California State University, Northridge. She is now a California Sea Grant Fellow at the State Water Resources Control Board in the Office of Information Management and Analysis. Her work in this fellowship focuses on updating and enhancing the Tribal Water Data Map and its User Manual, and assisting the SWAMP Statewide Freshwater Harmful Algal Bloom (FHAB) Program to communicate the revisions to the revised statewide monitoring guidance for benthic toxic algal mats. She is working towards a career in enhancing coastal resilience for land-sea interfaces experiencing the impacts of climate change, and values science communication, open and accessible data practices, and fostering curiosity and excitement in next-generation scientists.

Website: <https://cawaterboarddatacenter.github.io/tribal-water-data-map-manual/>



Seth Avram LaRosa is a PhD Candidate in Environmental Science, Policy & Management at UC Berkeley and a researcher with the Cannabis Research Center. Seth specializes in geospatial data analysis. His work focuses on Indigenous land governance, cannabis regulation, and environmental justice in California.

Website: <https://crc.berkeley.edu>



Dr. Jeremy Sorgen is Assistant Research Professor at Northeastern University. His work focuses on Indigenous sovereignty, environmental ethics, and land use governance. He collaborates with Tribes on community-based research to support policy reform and is completing a book on Tribal consultation and environmental decision-making.

CALIFORNIA NATIVE AMERICAN TRIBAL GIS SUMMIT 2025



Dr. Ted Grantham is an Associate Professor of Cooperative Extension in the Department of Environmental Science, Policy, and Management at UC Berkeley. He studies the ecological and physical dynamics of rivers and works to translate scientific knowledge into sustainable solutions for managing water in a changing climate. Ted leads the Collaboratory for Equity in Water Allocations (COEQWAL) project, which aims to broaden public participation in California water planning and stewardship. He is the faculty director of the UC Berkeley Cannabis Research Center, a co-director of the Berkeley Freshwater Group, and an Adjunct Fellow with the Water Policy Center of the Public Policy Institute of California. He has a B.S. in Biological Sciences from Stanford University and a Ph.D. from UC Berkeley's Department of Environmental Science, Policy and Management.

Website: <https://coeqwal.berkeley.edu/>



Wietske Medema, Ph.D. is the Program Manager for COEQWAL with the Department of Environmental Science, Policy and Management at UC Berkeley. She specializes in water governance, water security and risk, water stewardship, social learning, multi-stakeholder engagement and collaborative processes. Wietske has over 15 years of project management, research, and policy experience in water and environmental projects in North America, Europe and Southeast Asia. As Associate Director for the Adaptive and Integrated Water Resources Management Program at McGill University, she developed and supervised water stewardship projects and research partnerships, including with First Nation Tribes. In California, she has worked as a project manager and senior research consultant for the City of Richmond, developing a Green-Blue New Deal Workforce Development Plan to create thousands of green sector jobs, accelerating a just transition to a decarbonized and circular economy. She has also co-founded and worked with several community-based organizations in the San Francisco Bay Area, empowering youth from frontline communities through environmental programming, community science projects and civic engagement. Her passion for water and the environment has centered around science that serves to resolve socio-environmental issues affecting vulnerable and historically marginalized communities.

Website: <https://coeqwal.berkeley.edu/>



Jill Fantauzzo is a designer, programmer, and cartographer at the UC Berkeley Geospatial Innovation Facility. Her work focuses on making complex climate and environmental data accessible and meaningful to the public. She currently leads the development of the COEQWAL website and data dashboard. As part of this project, Jill has been learning best practices to support Tribal and Indigenous data governance and to uphold Tribal sovereignty and Indigenous rights.

HONORING PLACE, EMPOWERING NATIONS



Aaryaman "Sunny" Singhal is a PhD student studying Environmental Science and Public Policy at the University of California, Berkeley. His focus is on water security in the Western U.S. in the face of climate change. In particular, he is interested in policy changes to support the evolution to a new water paradigm that centers justice for historically marginalized communities. Sunny is intellectually curious and values diverse experiences. He studied liberal arts and business at the University of Texas at Austin, and has worked at Southwest Airlines, a small environmental nonprofit, and as an organizer in the youth climate justice movement. In his spare time, you'll find him hiking, biking, and painting.

Website: <https://coeqwal.berkeley.edu/>



Sydney Moss is a PhD student in the Department of Environmental Science, Policy, and Management at UC Berkeley. She studies community self-determination in land and water-based interventions within Indigenous territories. She co-leads the Participatory, Land-based, and Critical Environments (PLACE) Research Team at UC Berkeley. Prior to her PhD, she designed and led participatory GIS programs and an open-source interactive data platform to increase the participation of Indigenous communities in land-use planning. She also researched International and national policy and finance mechanisms to identify levers for increasing local worldviews and priorities in spatial assessments that inform climate adaptation, watershed management, and biodiversity conservation. Sydney's worldview and research ethics are continuously shaped by her experiences of allyship and relationships with Indigenous communities.

Website: <https://coeqwal.berkeley.edu/>



As the state GIO (Geographic Information Officer) **Lothar Petrick** leads the state geospatial program at the CA Department of Technology and strives to efficiently bring more foundation GIS layers and tools to all Californians. Experienced facilitator advising organizations how to improve their spatial data quality, responsiveness, and workflows across their entire geospatial platform and its integration into their larger IT goals and business critical needs. More than two decades of experience as a Geospatial Data Scientist with a demonstrated history of working in agriculture, water security, wildlife conservation, natural resource management and geospatial policy.

CALIFORNIA NATIVE AMERICAN TRIBAL GIS SUMMIT 2025



Zoe Varner is a Research Scientist at the Office of Environmental Health Hazard Assessment and lives in Oakland. Zoe has particular interest in data that advances Indigenous and rural environmental justice, informed by her experiences growing up in Humboldt County. In her free time Zoe loves hiking, photography, and finding new river spots.

Website: <https://oehha.ca.gov/>



Emilia Bartnick—Originally from Florida, I developed a passion for wildlife and conservation early on, which led me to pursue a career in environmental science. I have a background in marine mammal research and conservation, which laid a strong foundation for my work with the U.S. Fish and Wildlife Service (FWS). I spent valuable time working in the Alaska Region of FWS, where I was involved in a range of conservation initiatives across remote and ecologically rich landscapes. For the past two years, I've been working with the National Wetlands Inventory (NWI), where I've focused on supporting wetland mapping and ecological data efforts. Now based in Hawai'i, I continue to bring a commitment to habitat conservation and interagency collaboration, while embracing the unique ecosystems and cultural heritage of the islands.

Website: <https://www.fws.gov/program/national-wetlands-inventory>



Bryce Lewis-Smith (he/him) is an enrolled member of the Citizen Potawatomi Nation and the Senior Tribal Research Engagement Specialist for the Governor's Office of Land Use and Climate Innovation. He manages the Tribal Research Program of California's Fifth Climate Change Assessment, which uplifts California Native American Tribes' leadership, voices, and knowledges as integral to the state's understanding of and response to climate change.

Website: <https://lci.ca.gov/climate/icarp/vulnerable-communities.html>



Paulina Mnev is a Solution Engineer on the Civilian National Government Team. As a recent graduate from the George Washington University with a Master's in Data Science and GIS, she is excited to join the team at Esri to support Native Nations and Tribes. Paulina's background is in remote sensing applications for environmental monitoring and data visualization. Her focus lies imagery workflows, building configurable applications, and empowering GIS users through impactful solutions.

Chris Goh supports the USDA, USDOl, and Native Nations with their imagery implementations. He is passionate about advocating for complete systems and how new technologies, such as UAS, can be used to enhance workflows to increase safety, provide insights, and accelerate missions.

HONORING PLACE, EMPOWERING NATIONS



Jane Schafer-Kramer is the technical lead for DWR's National Hydrography Data Stewardship Program. She learned GIS at American River College in Sacramento and currently serves on the California Geographic Information Association Board of Directors and the SEIU Local 1000 Native American Human Rights Committee. She resides in Davis on the land of the Patwin people.

Website: <https://data.cnra.ca.gov/dataset/national-hydrography-dataset-nhd>



Ryan Boynton is an experienced Geographic Information Systems (GIS) Programmer at the University of California, Davis, where he has been working since 2006. In this role, he has developed and maintained GIS programs and projects, significantly contributing to environmental science and policy initiatives. He has leveraged his expertise to develop analytical tools and datasets that are utilized by land managers and other researchers in the field. Since 2010, he has been using predicted climate data to assess climate vulnerabilities across regions, including California and international locations like Mexico, Chile and South Korea. Ryan's work focuses on spatial data analysis, ecological modeling, and the development of decision support tools for conservation and land management. With a B.S. in Environmental Biology and Management and a minor in GIS from UC Davis, Ryan specializes in making complex environmental data accessible and actionable for planners, agencies, and land stewards.

Co-Authors: Alex Motawi, Alma Gutierrez Camarillo, Allan Hollander, April Engelmeier, Dave Waetjen, James H Thorne, Nina Fontana, Landin Noland

CALIFORNIA NATIVE AMERICAN TRIBAL GIS SUMMIT 2025

DAY 2



Eileen Boughton—Pomo Yokayo/Robinson. Traditional dancer, Pow Wow dancer, Teacher, Advocate for Indigenous and Labor issues. Co-Chair SEIU International-Indigenous—Peoples Caucus, Chair SEIU Local 1000—Native American Human Rights Committee, and President District Labor Council 789.



Samantha Cypret (Mountain Maidu) was named the Executive Director of the Office of Tribal Relations for the CSU Chancellor's Office in December 2024 to lead efforts to foster stronger relationships and collaboration between the California State University system and Tribal Nations. Prior to this role, she served as the Chief of Staff for Wilton Rancheria from August 2023 and as the Tribal Court Director there starting in 2020. Samantha teaches Federal Indian Law at the University of the Pacific's McGeorge School of Law.

Samantha came to Wilton Rancheria after five years at the Native American Heritage Commission (NAHC), where she served as the Investigations Manager and Special Assistant to the General Counsel. In that role, she worked with Tribes across California, as well as state and local agencies, to protect California's Tribal cultural resources. She led training sessions for the Environmental Section of the State Bar of California, the Sacramento County Bar Association, the California Preservation Foundation, the Association of Environmental Professionals, and a variety of Tribal Governments, State Agencies, and other Lead Agencies.



Geneva E. B. Thompson (she/her/hers) joined the California Natural Resources Agency in June 2021 as the Deputy Secretary for Tribal Affairs. In this role, Geneva will cultivate and ensure the participation and inclusion of tribal governments and communities within the work of the California Natural Resources Agency. She recently served as Associate General Counsel for the Yurok Tribe, where she practiced environmental and cultural resource law and represented the Yurok Tribe in tribal, state, and federal forums. She also served as Staff Attorney for the Wishtoyo Foundation and clerked with the Department of Justice Indian Resource Section, the Natural Resources Defense Council, Earthjustice, and the Tribal Law and Policy Institute. Geneva graduated from the University of California, Los Angeles School of Law, with specializations in Critical Race Studies and Public Interest Law and Policy. She has published several law review articles and has served in leadership positions across multiple bar associations, including the National Native American Bar Association, California Indian Law Association, and the American Bar Association. Geneva is a citizen of the Cherokee Nation and enjoys beading, gardening, and hiking with her spouse in state and national parks.

HONORING PLACE, EMPOWERING NATIONS



Meghan Hertel joined the California Natural Resources Agency in February 2024 as Deputy Secretary of Biodiversity and Habitat. In this role, Meghan leads the Agency's efforts to conserve biodiversity and improve habitat across the state through the implementation of California's 30x30 strategy and associated efforts including the Cutting Green Tape initiative and supporting the implementation of large-scale habitat projects. Before joining the Agency, Meghan served as North American Director for Land Life, a technology-driven, nature restoration company, and spent over a decade with Audubon California holding several positions including Director of Land and Water Conservation, where she led statewide conservation programs focused on inland water and working lands strategies. In her free time, you can find Meghan and her husband enjoying California's incredible outdoors—backpacking, biking and paddleboarding—or trying to keep up with their foster dogs. Meghan holds a Master of Arts in Environmental Science and Policy from Clark University and a Bachelor of Arts in Political Science from the University of Florida.



Marty Meeden (Mono Lake Paiute/Washoe) is the current chair of the CA Public Domain Allotments Association. He is a retired elementary school teacher and was the first CA Native to sit on the CA Teachers Association Board of Directors and the National Education Board of Directors. He continues advocating for Native students as part of the Liberated Ethnic Studies Model Curriculum Consortium. He currently resides in Carson Valley, NV.



Randall Race Richards - Dv-laa-ha~ shii-xuu-shi' Naa-wet-ne (Race) Richards, I am a Tolowa Dee-ni' Nation Tribal citizen and have been employed at the Natural Resources department for the nation for a little over 5 years now. Natural Resources work has been very important to me as the resources we monitor are traditional keystone species integral to our way of life. I've lived in Tolowa territory all my life and majority next to the village I come from Xaa-wan'-k'wvt at the mouth of the Smith River.



Nathaniel (Nate) Roth is the Department of Conservation's (DOC) Chief Science and Data Advisor. Previously, he served as DOC's Geographic Information Officer overseeing DOC's geographic data publication, practices, and the infrastructure that support them. He is a liaison for GIS data between DOC and other states, federal, and local agencies as well as private and non-governmental organizations. A constant theme in his work includes the use of data to improve decision-making processes through in-depth analysis emphasizing data and process transparency. Some recent efforts that he takes pride in have been supporting California's 30x30 and building partnerships to complete acquisition of lidar coverage for California. Nate has a B.S. in Environmental Biology & Management, and M.A. and Ph.D. in Geography from UC Davis.

Website: <https://www.conservation.ca.gov>

CALIFORNIA NATIVE AMERICAN TRIBAL GIS SUMMIT 2025



Crystal Blue (Miwok/Nisenan) was named the first Tribal Liaison for the California Department of Conservation (DOC) in January 2025, where she works to strengthen partnerships between the Department and California tribes. She is committed to fostering respectful government-to-government relationships and advancing sustainable practices that honor tribal lands, traditions, histories, and knowledge. Crystal is Miwok/Nisenan, and a Tribal Citizen of Lone Band of Miwok Indians. She holds a Master's degree in Tribal Administration & Governance from the University of Minnesota, Duluth, and an undergraduate degree from the University of California, Davis.

Website: <https://www.conservation.ca.gov>

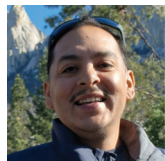


Drew Decker is the National Map Liaison for California, Hawaii, Oregon, Pacific Basin, and Washington and has worked for the National Geospatial Program within USGS since 2007. He works with local, state, Tribal, and other federal agencies to coordinate mapping production, maintenance, standards, and planning in support of The National Map. He also provides support to USGS scientists and the public for mapping related assistance concerning geographic data.

Website: www.usgs.gov



Crystal West has over 20 years of experience in archaeology and cultural resources management in California. Recently, she completed her thesis research at the University of Montana, Missoula in collaboration with the North Fork Mono Tribe mapping and documenting the Nium Trail.



Jesse Valdez, North Fork Mono Councilmember has extensive experience stewarding and protecting his homelands in the central Sierra Nevada mountains and mentoring with his uncle and Chairman Dr. Ron Goode.

Website: <https://northforkmonotribe.org>



Dr. Elaine (Lan Yin) Hsiao is an Assistant Professor in the School of Peace and Conflict Studies at Kent State University. Her research focuses on sustainable development, specifically through the lens of environmental peacebuilding.

Dr. He Yin is an Assistant Professor of Geography at Kent State University. He heads the Remote Sensing and Land Science Lab (SensLand Lab) and his research focuses on the utilization of remote sensing techniques to develop an understanding of land use changes. Both presenters have a passion for the intersection of environmental and sociological issues.

HONORING PLACE, EMPOWERING NATIONS



Eric Howard is a Geospatial Data Scientist at the California Governor's Office of Emergency Services, where they lead the development of spatial analysis tools and workflows that support statewide emergency preparedness, response, and recovery efforts. With over 20 years of experience in applied GIS and data science, Eric specializes in translating complex geospatial data into actionable insights for decision-makers. Eric's background includes work in transportation planning, land use analysis, and environmental modeling, with a strong emphasis on automation, statistical analysis, and cross-agency collaboration. Passionate about using geospatial technology to improve public safety and resilience, Eric brings a systems-thinking approach to the evolving challenges of emergency management.



Alex Shariatmadari is a Senior Emergency Services Coordinator and the Tribal Liaison at the California Governor's Office of Emergency Services, where he works to foster and build stronger partnerships with tribal governments, state agencies, and key stakeholders to improve emergency preparedness and disaster response in tribal communities. Over the past six (6) years, he has gained valuable experience in California's emergency management efforts, including mitigation, response and recovery, coordinating mass care and shelter operations, individual assistance programs, and volunteer agency collaboration. Prior to this, Alex spent over a decade with the United Nations, contributing to humanitarian emergency response and efforts in various international contexts. Alex holds a master's degree in international relations and is a certified Emergency Manager and Homeland Security Specialist. He is committed to fostering cultural inclusivity and collaboration to support communities in need and enhance resilience across diverse populations.



Lawrence Harlan is the former Chairman of the Fort Bidwell Indian Community of the Fort Bidwell Paiute Indian Reservation, a federally recognized tribe. Lawrence currently serves as a Councilman on the Fort Bidwell Indian Community Council and was recently appointed the Tribe's Inter-Tribal Buffalo Council Delegate. Lawrence has over twenty years of work experience in the field of finance and serves as Associate Director of Finance at a Federally Qualified Health Center in San Jose, California. Lawrence holds a Bachelor of Science degree in mathematics with a minor in policy studies from Syracuse University and a certificate in financial planning for UC Davis Extension.

Website: <https://sgc.ca.gov/initiatives/alei/>

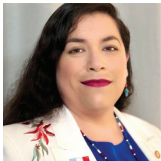


Camille Frazier is the Agricultural Land Equity Program Manager at the California Strategic Growth Council where she leads the administration of the California Agricultural Land Equity Task Force. She has a PhD in sociocultural anthropology from UCLA and has over 10 years of research, writing, and teaching experience related to food, agriculture, and the environment in the U.S. and India.

Website: <https://sgc.ca.gov/initiatives/alei/>



CALIFORNIA NATIVE AMERICAN TRIBAL GIS SUMMIT 2025



Dr. Jessica Mosher, MBA, DrPH (Pascua Yaqui) Dr. Jessica Mosher walks in two worlds-the world of her ancestors and the modern world of public health and policy-bridging them with knowledge, respect, and a deep commitment to healing her people. A proud descendant of the Pascua Yaqui Tribe, she has devoted her life to ensuring that American Indian/Alaska Native (AI/AN) voices are heard in the spaces where health decisions are made. Dr. Mosher earned her Doctorate in Public Health with a focus on Health Policy and Leadership from Loma Linda University School of Public Health in 2023. During her time there, she was honored with several competitive scholarships and the prestigious Faculty of Graduate Studies Research Excellence Award. She also holds an MBA with a concentration in Geographic Information Systems/Location Analytics from the University of Redlands, where she was inducted into the Delta Mu Delta Honor Society. Her journey in higher education began with a Bachelor of Science in Business Administration from California Baptist University in 2010. Her research has focused on health equity, bringing light to the disparities that have long plagued AI/AN and underserved communities. Her publication in Geographies, titled “An Environmental Equity Assessment Using a Social Vulnerability Index during the SARS-CoV-2 Pandemic for Siting of Wastewater-Based Epidemiology Locations in the United States,” examines the inequitable distribution of COVID-19 testing sites across the country. By incorporating geospatial analysis and public health data, her work underscores the urgent need for equitable solutions in pandemic response efforts-solutions that do not leave AI/AN and other marginalized communities behind. As a consultant with HC2 Strategies and the California Rural Indian Health Board, Dr. Mosher works to bridge the gaps caused by systemic inequities, ensuring that AI/AN knowledge and cultural sensitivity are part of the conversation. She previously served as a Randall Lewis Health & Policy Fellow, working with Build Healthy Places Network on initiatives focused on Native American communities. Beyond her professional work, Dr. Mosher gives her time and energy to strengthen AI/AN communities. She serves as chair of the Los Angeles County Department of Mental Health: AI/AN Underserved Cultural Communities Subcommittee and as a board member of the Museum of the American Indian in Novato.



Nora Pulskamp (Dine) serves as the Tribal Liaison and Director of Native Student Programs at the University of Redlands. With 24 years of experience in Native higher education, her work spans recruitment, access, retention, student affairs, alumni relations, tribal relations, academic advising, academic program development, and advancement. A dedicated advocate for Native student success, N6ra leads initiatives that center Native identity, belonging, and academic achievement. Nora’s work is grounded in her personal commitment to education as a tool for empowerment and cultural preservation.

Website: <https://www.redlands.edu/nativestudentprograms> and <https://www.redlands.edu/academics/undergraduate-programs/accelerated-geographicinformation-science-pathway>



HONORING PLACE, EMPOWERING NATIONS



Madeleine Dow has been a Scientific Aid for the Division of Water Quality’s CEC Program at the State Water Boards for a year and a half. She graduated from Cal Poly Pomona with a B.S. in Environmental Geography and is passionate about exploring the ways that spatial analysis can support Indigenous land stewardship and restorative justice.

IN MEMORY OF



Sabine Talaugon, Cal/EPA—Deputy Secretary for Intergovernmental Relations. Sabine Talaugon (Samala Chumash) was appointed by Governor Gavin Newsom in August 2024 to serve as Deputy Secretary of Intergovernmental Relations at the California Environmental Protection Agency. Prior to joining CalEPA, Sabine worked at nonprofit organizations including First Nations Development Institute and the California Consortium for Urban Indian Health. She also provided consulting services through Third Plateau Social Impact Strategies and Iwex Consulting. She began state service in 2020; leading tribal affairs work at California State Parks. She earned a Bachelor of Arts degree in Public Policy and a Master of Public Policy degree from Mills College at Northeastern University.

CALIFORNIA NATIVE AMERICAN TRIBAL GIS SUMMIT 2025

EXHIBITORS



CA Department
of Fish and Wildlife
wildlife.ca.gov



California Department
of Water Resources
www.water.ca.gov



Dewberry
[dewberry.com/services/
geospatial-mapping-and-survey](http://dewberry.com/services/geospatial-mapping-and-survey)



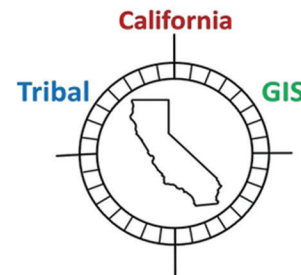
SEIU Local 1000
Native American Committee
[seiu1000.org/native-
american-committee/](http://seiu1000.org/native-american-committee/)



California Geographic
Information Association
www.cgia.org



Forest Business Alliance
forestbusinessalliance.org



CA Tribal GIS
www.catribalgis.org



California Public Domain
Allottee Association
capdaa.org



Native American
Environmental
Protection Coalition
WWW.NAEPC.COM



Native California Research
Institute (NaCRI)
<https://nacri.institute>



California Indian
Basketweavers' Association
<https://ciba.org/>

HONORING PLACE, EMPOWERING NATIONS

SPONSORS



INDIVIDUAL CONTRIBUTIONS

Harlin Casida (former Mayor of Avenal) | Roy Morales | KB | Tewana Cervantes



CALIFORNIA NATIVE AMERICAN TRIBAL GIS SUMMIT 2025

FIRST FLOOR

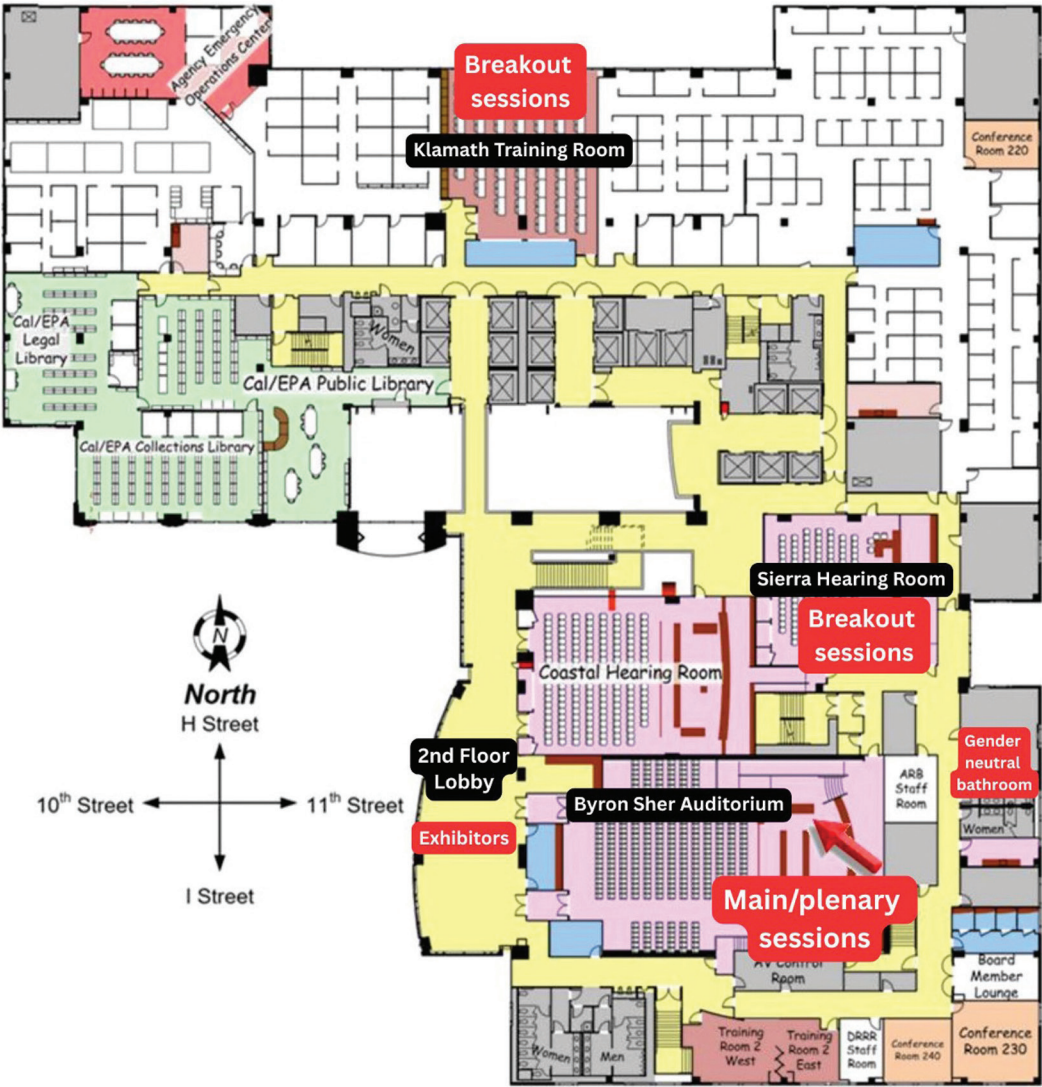
Relevant locations labeled in black and red.



HONORING PLACE, EMPOWERING NATIONS

SECOND FLOOR

Relevant locations labeled in black and red.



PLANNING TEAM

Adriana Renteria

State Water Board,
Director of the Office of Public
Engagement, Equity, and Tribal Affairs

Ali Talakoob

Research Data Analyst I (GIS Specialist),
CA Department of Parks and Recreation

Ana Canter

GIS Specialist and THPO Assistant
for the Bear River Band

Ankitha Doddanari

Office of Land Use
and Climate Innovation (LCI)

April Carmelo

Greenville Rancheria and Shasta Union
High School District Title VI /JOM

Barbara Cross

Tribal Liaison, California Department of
Water Resources, Office of Tribal Affairs

Bryce Lewis-Smith (Potawatomi)

Senior Tribal Research Engagement
Specialist, Governor's Office of Land
Use and Climate Innovation (LCI)

Callie Leiphardt

Northern Chumash Tribal Council

Camilo Perez

Quechan Indian Tribe
Pesticides Control Officer

Cecila Ruiz

Sierra Nevada Alliance

Coach Jackson

(Nanticoke) Coastal Defenders

Cristian Viveros

Middletown Rancheria of Pomo Indians,
Tribal GIS

Dakota Jeff

Tachi Yokut Tribal Member, Redding
Rancheria Cultural Administrative Assistant

Debie Rasmussen

EPA Director for Enterprise Rancheria

Donna Miranda-Begay

Tubatulabal/Tule River Yokut/Paiute/Dine',
California Tribal GIS, CEO

Drew Decker

US Geological Survey, National Map Liaison

Elias Rodriguez

Twenty Nine Palms Band of Mission Indians

Eric Howard

Cal OES (Office of Emergency Services)

Finn Machuga

Kent State University (KSU),
Student Researcher

Gabby Morales

San Diego State University

Hanna Bliska

Climate Services, Governor's Office
of Land Use and Climate Innovation (LCI)

Jane Schafer-Kramer

CA Dept. of Water Resources,
data steward for national hydrography data

Jason MacCannell

California State Parks,
Special Assistant to the Director

Jeff Lynch

Habematolel Pomo of Upper Lake,
CA GIS Analyst

Joel Myhre

CA Department of Pesticides Regulation

Katie Croft

Research Data Manager, CA State Parks

Lauren Healey

USFWS-National Wetland Inventory (NWI)

Lillie Lucero

Redding Rancheria Tribal Member
and THPO for the Tribe

Lisa Marun

San Diego State University (SDSU)
Center for Climate Equity
and Resilience, Environmental
Communicator and Researcher

Louis Curson-Mayorga

United Auburn Indian Community,
Cultural Regulatory & GIS Specialist

Madeleine Dow

Scientific Aid at State Water Resources
Control Board (SWRCB)

Mark Hedlund

GIS specialist at Governor's Office
of Land Use and Climate Innovation (LCI)

Molly Williams

Environmental Scientist at the State Water
Board Office of Public Engagement, Equity,
and Tribal Affairs

Nathan Blacksmith

(Sisseton-Wahpeton Oyate)
SWRCB Tribal Affairs Program Manager
Office of Public Engagement, Equity, and
Tribal Affairs (OPEETA)

Nóra Pulskamp

Navajo, Tribal Liaison and
Director of Native Student Programs
at the University of Redlands

Robert Powell

Planning Director, Torres Martinez Desert
Cahuilla Indians

Shane Helms

Cahuilla Tribal Member, Planning Director
for Cahuilla Band of Indians

Veronica Petrik

Twenty-Nine Palms Band of Mission Indians

Zoe Varner

Research Scientist, Office of Environmental
Health Hazard Assessment (OEHH)