



## **ASI Model DP-060 Series In-situ Diluting Probe Heaters**

The ASI Model DP-060 Series Probe Heater is specially developed for use with new ASI or existing EPM In-situ Diluting Samplers (Probes). Another simple and low cost way to keep your CEMS sampling equipment downtime to a minimum.

### **Lighter:**

Assembly with extension pipe will be much lighter as it will use 3" nominal pipe (**3-1/2" OD**) instead of 3-1/2" nominal pipe (**4" OD**) as with the EPM model 797.561L.

### **Compact:**

Can fit into smaller ID stack/duct ports, as the extension ring does not exceed the extension pipe OD of **3-1/2"**. The EPM model has an extension ring with a **5" OD**.

### **Compatible:**

Can be used with existing in-situ dilution probes regardless of probe-flange type, as long as the probe has newer style filter cap assembly (with groove for the Kalrez o-ring at probe-tip).

### **Adaptable:**

Custom adaptors can be produced to attach heated probe assembly to many existing extension pipe configurations. Also, has three tapped holes on tip face of outer heater mantle, that can be used to attach particulate deflector if desired (custom made by end user, or designed by ASI upon request).

### **Interchangeable:**

The heater coils are interchangeable between this heater assembly and the EPM 797.560 series heaters.

### **Economical:**

Whether you are looking for a basic coil replacement, or a complete heater assembly, our pricing is significantly lower than that of the formerly available EPM models. Please contact ASI for current pricing.

The unit comes complete with standard extension ring (for customer to weld to pipe) and mounting bolts, FFKM high temperature O-ring, anti-seize compound, extra gaskets and necessary tools.



### **GENERAL SPECIFICATIONS**

<b>Wetted Parts:</b>	Stainless 316/316L
<b>Voltage:</b>	115VAC (230VAC Optional)
<b>Wattage:</b>	400W (Higher Wattage Optional)
<b>Cable/Leads Length:</b>	4 Meter (Lead Length 13 Feet ... with 12FT Flex Armored Conduit for "Fixed" Version)
<b>Thermocouple Type:</b>	K-Type
<b>Temperature Regulating:</b>	Via Temperature Controller (by customer)
<b>Max Op. Temp:</b>	572°F (300°C) [Non-Coated Versions Only]
<b>Shipping Weight:</b>	12 lbs.



## ASI Model DP-060 Series Basic Model List



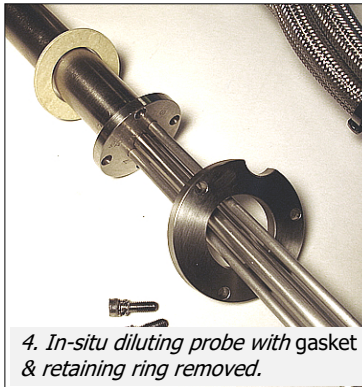
1. Coil assembly with inner flange flange removed from mantle.



2. Coil assembly with inner flange installed into mantle.



3. In-situ diluting probe tip, with special grooved filter cap for the Kalrez o-ring.



4. In-situ diluting probe with gasket & retaining ring removed.



5. In-situ diluting probe installed into heater assembly.

### ASI STANDARD IN-SITU DILUTION PROBE HEATERS

ALPHA SUITE INC. IN-SITU DILUTION PROBE HEATERS - OVERVIEW OF BASIC MODELS & CONFIGURATIONS AVAILABLE		
ASI MODEL	DESCRIPTION	DETAILS
DP-060-A	FIXED INSTALLATION	115VAC, 400W, 4M ARMORED CABLE, STANDARD MOUNTING PROVISIONS FOR 3" NOM (3-1/2"OD) S10 PIPE.
DP-060-A2	STACK TESTER VERSION	115VAC, 400W, 4M FIBERGLASS OVERBRAIDED CABLE. CONCENTRIC REDUCER IS NOM. 3"x1-1/2" (3.5"x1.90"OD)
DP-060-A2B	STACK TESTER (SPECIAL MOUNT)	115VAC, 400W, 4M FIBERGLASS OVERBRAIDED CABLE. SPL CONCENTRIC REDUCER IS NOM. 3"x2" (3.5"x2.375"OD)
DP-060-B	FIXED INSTALLATION	115VAC, 400W, 8M ARMORED CABLE, STANDARD MOUNTING PROVISIONS FOR 3" NOM (3-1/2"OD) S10 PIPE. <b>*** OBSOLETE *** 8M NO LONGER AVAIL.</b>
DP-060-C	FIXED INSTALLATION	230VAC, 400W, 4M ARMORED CABLE, STANDARD MOUNTING PROVISIONS FOR 3" NOM (3-1/2"OD) S10 PIPE.
DP-060-C2	STACK TESTER VERSION	230VAC, 400W, 4M FIBERGLASS OVERBRAIDED CABLE. CONCENTRIC REDUCER IS NOM. 3"x1-1/2" (3.5"x1.90"OD)
DP-060-D	FIXED INSTALLATION	230VAC, 400W, 8M ARMORED CABLE, STANDARD MOUNTING PROVISIONS FOR 3" NOM (3-1/2"OD) S10 PIPE. <b>*** OBSOLETE *** 8M NO LONGER AVAIL.</b>

**!! IMPORTANT NOTE ON COIL ORDERING LENGTHS:**

- 4M CABLE LENGTH HAS 4M (13FT) LEAD LENGTH, WITH OUTER CONDUIT LENGTH OF 3.6M (12FT) FOR THE "FIXED INSTALLATION" VERSIONS.



#### **MODEL DP-060-A ["FIXED CEMS INSTALLATION" VERSION]**

MODULAR HEATER ASSEMBLY: **115VAC, 400W, 4M ARMORED CABLE**, COIL WITH INTEGRAL K-TYPE T/C. WETTED PARTS FROM SS-316/316L. FOR USE WITH IN-SITU DILUTION PROBES. *\*THIS ONE INTENDED FOR FIXED INSTALLATION.*

**MODEL NOTES:** THIS MODEL COMES WITH AN EXTENSION RING THAT END-USER MUST WELD TO END OF A 3" NOMINAL PIPE (3-1/2" OD, MUST BE SCHED10). THIS IS THE MOUNTING CONFIGURATION OF HEATED PROBE TO THE END OF THE EXTENSION PIPE.

**LEAD-TIME:** PLEASE CONTACT ASI FOR CURRENT PRICING AND LEAD-TIMES

#### **MODEL DP-060-A2 ["STACK-TESTER" VERSION]**

MODULAR HEATER ASSEMBLY: **115VAC, 400W, 4M FIBERGLASS OVERBRAIDED CABLE**, COIL W/ INTEGRAL K-TYPE T/C. WETTED PARTS FROM SS-316/316L. FOR USE W/ IN-SITU DILUTION PROBES/STACK TESTER VERSION. *\*THIS ONE INTENDED FOR TEMPORARY/PERIODIC INSTALLATION.*

**MODEL NOTES:** THIS MODEL COMES WITH AN EXTENSION RING THAT IS PREWELDED TO END OF A CONCENTRIC REDUCER (STANDARD NOM. 3"x1-1/2" (3.5"OD x 1.90"OD, S10 REDUCER)). END-USER MUST WELD SMALL END OF CONCENTRIC REDUCER ASSEMBLY TO END OF THE 1-1/2" NOM PIPE. THIS IS THE MOUNTING CONFIGURATION OF HEATED PROBE TO THE END OF THE EXTENSION PIPE, OTHER ADAPTORS AVAILABLE UPON REQUEST.

**LEAD-TIME:** PLEASE CONTACT ASI FOR CURRENT LEAD-TIMES

#### **MODEL DP-060-A2B ["STACK-TESTER" VERSION – SPECIAL MOUNT]**

MODULAR HEATER ASSEMBLY: **115VAC, 400W, 4M FIBERGLASS OVERBRAIDED CABLE**, COIL W/ INTEGRAL K-TYPE T/C. WETTED PARTS FROM SS-316/316L. FOR USE W/ IN-SITU DILUTION PROBES/STACK TESTER VERSION. *\*THIS ONE INTENDED FOR TEMPORARY/PERIODIC INSTALLATION.*

**MODEL NOTES:** THIS MODEL COMES WITH AN EXTENSION RING THAT IS PREWELDED TO END OF A "SPECIAL SIZE" CONCENTRIC REDUCER (STANDARD NOM. 3"x2" (3.5"OD x 2.375"OD, S10 REDUCER)). END-USER MUST WELD SMALL END OF CONCENTRIC REDUCER ASSEMBLY TO END OF THE 2" NOM PIPE. THIS IS THE MOUNTING CONFIGURATION OF HEATED PROBE TO THE END OF THE EXTENSION PIPE, OTHER ADAPTORS AVAILABLE UPON REQUEST.

**LEAD-TIME:** PLEASE CONTACT ASI FOR CURRENT PRICING AND LEAD-TIMES

#### **MODEL DP-060-B ["FIXED CEMS INSTALLATION" VERSION] \*\*\* OBSOLETE \*\*\***

MODULAR HEATER ASSEMBLY: **115VAC, 400W, 8M ARMORED CABLE**, COIL WITH INTEGRAL K-TYPE T/C. WETTED PARTS FROM SS-316/316L. FOR USE WITH IN-SITU DILUTION PROBES. *\*THIS ONE INTENDED FOR FIXED INSTALLATION.*

**MODEL NOTES:** THIS MODEL COMES WITH AN EXTENSION RING THAT END-USER MUST WELD TO END OF A 3" NOMINAL PIPE (3-1/2" OD, MUST BE SCHED10). THIS IS THE MOUNTING CONFIGURATION OF HEATED PROBE TO THE END OF THE EXTENSION PIPE.

**LEAD-TIME:** \*\*\* 8M CABLE LENGTHS ARE NO LONGER AVAILABLE \*\*\*

#### **MODEL DP-060-C ["FIXED CEMS INSTALLATION" VERSION]**

MODULAR HEATER ASSEMBLY: **230VAC, 400W, 4M ARMORED CABLE**, COIL WITH INTEGRAL K-TYPE T/C. WETTED PARTS FROM SS-316/316L. FOR USE WITH IN-SITU DILUTION PROBES. *\*THIS ONE INTENDED FOR FIXED INSTALLATION.*

**MODEL NOTES:** THIS MODEL COMES WITH AN EXTENSION RING THAT END-USER MUST WELD TO END OF A 3" NOMINAL PIPE (3-1/2" OD, MUST BE SCHED10). THIS IS THE MOUNTING CONFIGURATION OF HEATED PROBE TO THE END OF THE EXTENSION PIPE.

**LEAD-TIME:** PLEASE CONTACT ASI FOR CURRENT PRICING AND LEAD-TIMES

#### **MODEL DP-060-C2 ["STACK-TESTER" VERSION]**

MODULAR HEATER ASSEMBLY: **230VAC, 400W, 4M FIBERGLASS OVERBRAIDED CABLE**, COIL W/ INTEGRAL K-TYPE T/C. WETTED PARTS FROM SS-316/316L. FOR USE W/ IN-SITU DILUTION PROBES/STACK TESTER VERSION. *\*THIS ONE INTENDED FOR TEMPORARY/PERIODIC INSTALLATION.*

**MODEL NOTES:** THIS MODEL COMES WITH AN EXTENSION RING THAT IS PREWELDED TO END OF A CONCENTRIC REDUCER (STANDARD NOM. 3"x1-1/2" (3.5"OD x 1.90"OD, S10 REDUCER)). END-USER MUST WELD SMALL END OF CONCENTRIC REDUCER ASSEMBLY TO END OF THE 1-1/2" NOM PIPE. THIS IS THE MOUNTING CONFIGURATION OF HEATED PROBE TO THE END OF THE EXTENSION PIPE, OTHER ADAPTORS AVAILABLE UPON REQUEST.

**LEAD-TIME:** PLEASE CONTACT ASI FOR CURRENT PRICING AND LEAD-TIMES

#### **MODEL DP-060-D ["FIXED CEMS INSTALLATION" VERSION] \*\*\* OBSOLETE \*\*\***

MODULAR HEATER ASSEMBLY: **230VAC, 400W, 8M ARMORED CABLE**, COIL WITH INTEGRAL K-TYPE T/C. WETTED PARTS FROM SS-316/316L. FOR USE WITH IN-SITU DILUTION PROBES. *\*THIS ONE INTENDED FOR FIXED INSTALLATION.*

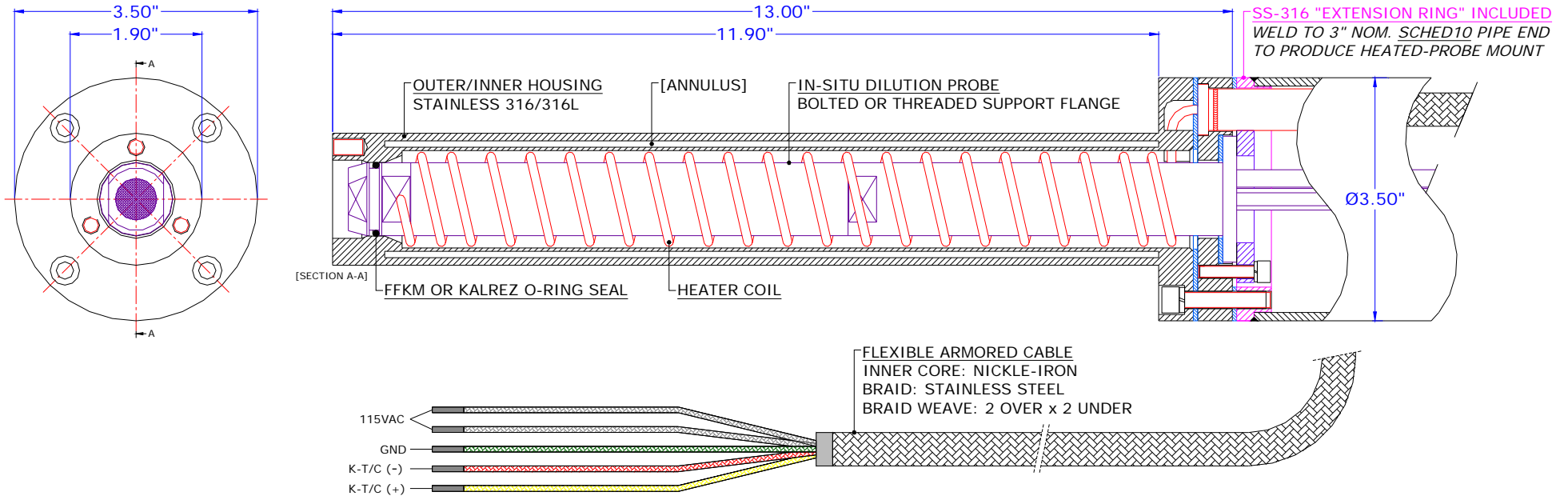
**MODEL NOTES:** THIS MODEL COMES WITH AN EXTENSION RING THAT END-USER MUST WELD TO END OF A 3" NOMINAL PIPE (3-1/2" OD, MUST BE SCHED10). THIS IS THE MOUNTING CONFIGURATION OF HEATED PROBE TO THE END OF THE EXTENSION PIPE.

**LEAD-TIME:** \*\*\* 8M CABLE LENGTHS ARE NO LONGER AVAILABLE \*\*\*



# ASI Model DP-060 Series - In-situ Diluting Probe Heaters

## ***FIXED INSTALLATION VERSION***



**GENERAL SPECIFICATIONS:**

<b>Wetted Parts:</b>	Stainless Steel 316/316L
<b>Voltage:</b>	115VAC (230VAC Optional)
<b>Wattage:</b>	400W (Higher Wattage Optional)
<b>Thermocouple Type:</b>	K-Type
<b>Cable Length:</b>	4 Meter (Lead Length 13 Feet - with 12FT Flex Armored Conduit)
<b>Outer Cable Covering:</b>	Fiberglass Overbraid - within a Flexible Armored Conduit
<b>Temperature Regulating:</b>	Via Temperature Controller (by customer)
<b>Max Operating Temp:</b>	572°F (300°C) Max. Process or Set-Point Temperature
<b>Shipping Weight:</b>	12 lbs.

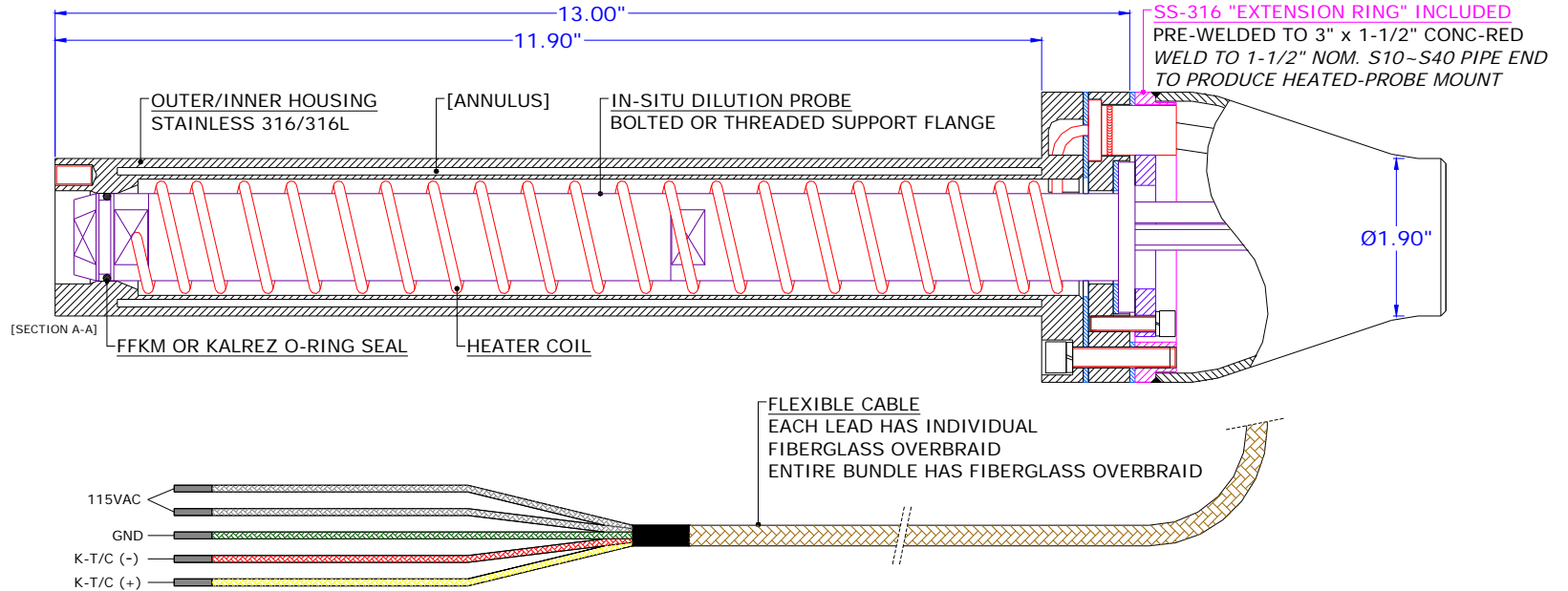
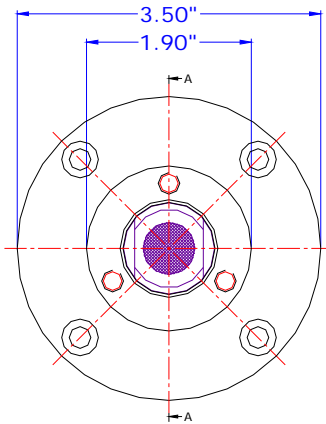
- For Illustration Purposes Only -  
 Specifications subject to change without notice  
 Contact Alpha Suite Inc. for current information  
 ©Alpha Suite Inc.





# ASI Model DP-060 Series - In-situ Diluting Probe Heaters

## ***STACK-TESTER VERSION***



**GENERAL SPECIFICATIONS:**

<b>Wetted Parts:</b>	Stainless Steel 316/316L
<b>Voltage:</b>	115VAC (230VAC Optional)
<b>Wattage:</b>	400W (Higher Wattage Optional)
<b>Thermocouple Type:</b>	K-Type
<b>Cable Length:</b>	4 Meter (Lead Length 13 Feet)
<b>Outer Cable Covering:</b>	Fiberglass Overbraid
<b>Temperature Regulating:</b>	Via Temperature Controller (by customer)
<b>Max Operating Temp:</b>	572°F (300°C) Max. Process or Set-Point Temperature
<b>Shipping Weight:</b>	12 lbs.

- For Illustration Purposes Only -  
 Specifications subject to change without notice  
 Contact Alpha Suite Inc. for current information  
 ©Alpha Suite Inc.

