

Request for Proposal (RFP)  
Bid No. 26-05-4127SB  
Addendum No. 1

---

**Date:** May 20, 2026  
**To:** All Proposers  
**Subject:** Addendum No. 1  
Consisting of Sixteen (16) pages.  
**RFP No.:** Bid No. 26-05-4127SB  
**Project Name:** N8084(1)1,2&4 Road Project in Many Farms, AZ  
**Owner:** Navajo Division of Transportation

Proposer shall acknowledge the receipt of this Addendum No. 1 on Form 1442 and make note of and/or incorporate all changes listed below into the requested Request for Proposal (RFP):

**REVISIONS TO THE CONTRACT DOCUMENTS INCLUDED IN THIS AMENDMENT:**

**I. DESIGN PLANS**

The following sheets have been revised. These sheets shall replace the corresponding sheets in the N8084(1) Many Farms Roadway Improvement Project Bid Plans. The revisions have been clouded and denoted as Amendment No. 1.

Sheet 60 of 109, DWG B11, Chinle Wash Abutment Details  
Sheet 61 of 109, DWG B12, Chinle Wash Pier Details  
Sheet 62 of 109, DWG B13, Chinle Wash Beam Bearing Details  
Sheet 83 of 109, DWG B34, Sheep Dip Wash Abutment Details  
Sheet 84 of 109, DWG B35, Sheep Dip Wash Pier Details  
Sheet 85 of 109, DWG B36, Sheep Dip Wash Beam Bearing Details

**II. Mandatory Pre-Proposal Meeting Minutes and Sign-In Sheets** from May 14, 2026 meeting that was held virtually. Meeting minutes include questions asked by attendees with Navajo DOT responses.

**III. Contractors Questions and Answers:**

**Q1.** Chinle Wash – Sheet 62 of 109 (DWG B13)

The bearing pad detail shows a thickness of 25mm. However, the bearing pad schedule calls for an “H” dimension of 51mm, which I’m assuming is related to thickness. Please clarify what is required.

Request for Proposal (RFP)  
Bid No. 26-05-4127SB  
Addendum No. 1

---

**A1.** The project plans have been revised in response to this question. Please see the revised plan sheets here in Addendum No. 1.

**Q2.** Sheep Dip Wash – Sheet 85 of 109 (DWG B36)  
The bearing pad detail shows a thickness of 25mm. However, the bearing pad schedule calls for an “H” dimension of 51mm, which I’m assuming is related to thickness. Please clarify what is required.

The bearing pad details show 3 metal shims. However, the bearing pad schedule calls for 2. Please clarify.


**A2.** The project plans have been revised in response to this question. Please see the revised plan sheets here in Addendum No. 1.

**Q3.** The job appears to have 12EA 1243mm (45” tall) and 12EA 914mm (36” tall) AASHTO Type 2 I-Girders. Our precast yards don’t have forms for those specific shapes, but we do have forms for CALTRANS I-girders which are very similar. CALTRANS I-girder shape attached (of note the increments in attached are every 6”, but we can cast them at whatever height is needed so matching current design heights are not an issue). Requesting approval for substitution for CALTRANS I-Girder shapes in lieu of AASHTO I-Girder shapes.

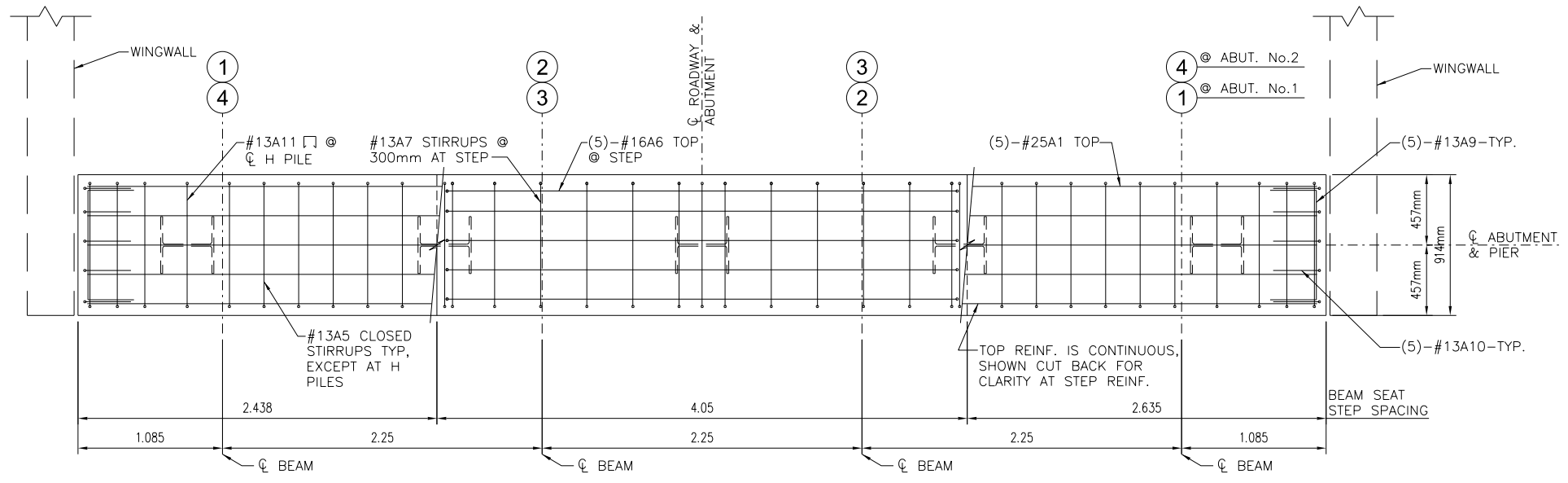
**A3.** As a precast concrete supplier to the bidding General Contractors, you can provide pricing for CALTRANS I-girder shapes at the discretion and acceptance of the bidding General Contractor. In accordance with the Contract Book for N8084(1) 1,2, &4 Many Farms-US 191 to Sand Cone Springs, Article 6.5, the CALTRANS I-girder shapes are considered a proposed Substitute Item (Article 6.5.A.2). In addition, and as stated in the Contract Book (Article 6.5.A.2), “Requests for review of proposed substitute items will not be accepted by Construction Manager from anyone other than Contractor”; where Contractor is defined as “The individual or entity with whom Government has entered into the Agreement.”

END OF ADDENDUM NO. 1

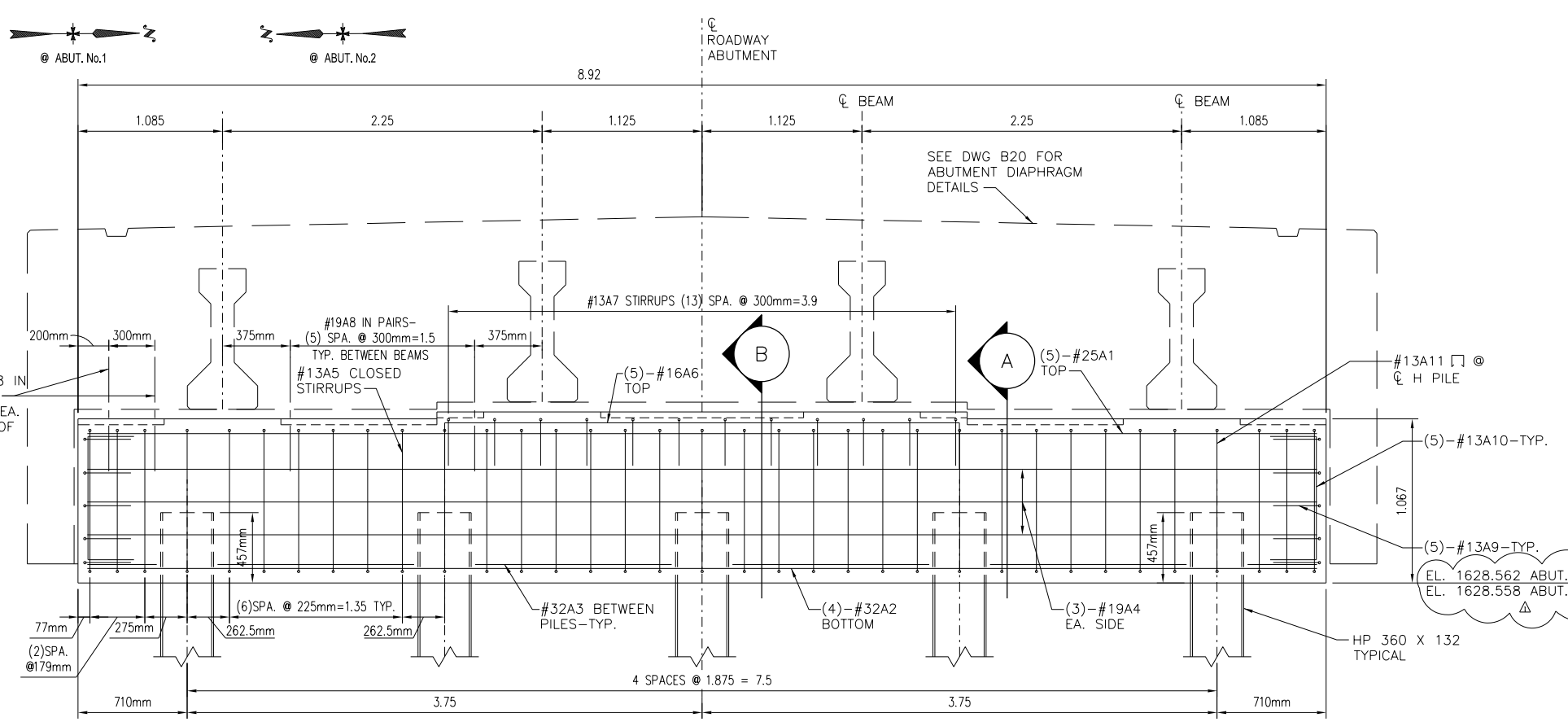
Thank you for your interest!

 for  
\_\_\_\_\_  
Ardaniel Begay, Principal Contract Analyst  
Project Contact Person

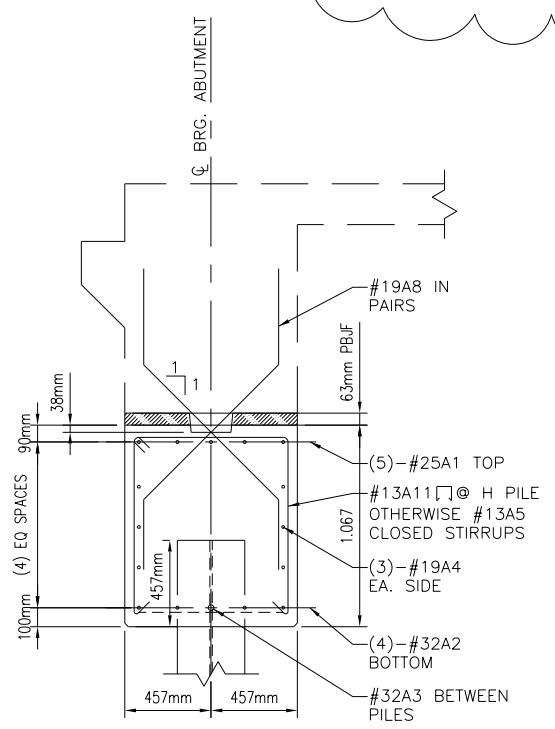
BEAM SEAT ELEVATIONS				
	Beam 1	Beam 2	Beam 3	Beam 4
Abutment No. 1	1629.608	1629.653	1629.653	1629.608
Abutment No. 2	1629.604	1629.649	1629.649	1629.604



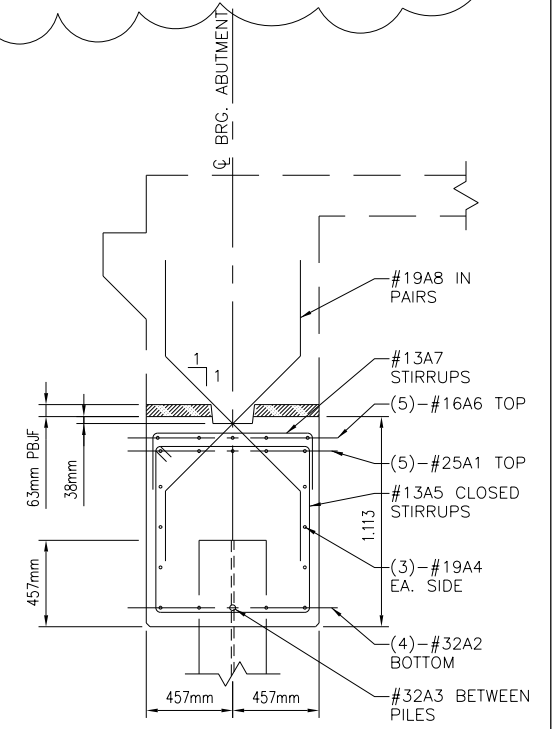
**ABUTMENT PLAN**  
SCALE=N.T.S.



**ABUTMENT ELEVATION**  
SCALE=N.T.S.



**SECTION A**  
SCALE=N.T.S.



**SECTION B**  
SCALE=N.T.S.

NOTE:  
1. SEE DWG B13 FOR PLAN OF BEARING PADS AND SHEAR KEYS.

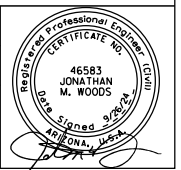


NAVAJO DIVISION OF  
TRANSPORTATION  
DEPARTMENT OF ROADS

N8084(1)1,2&4 MANY FARMS

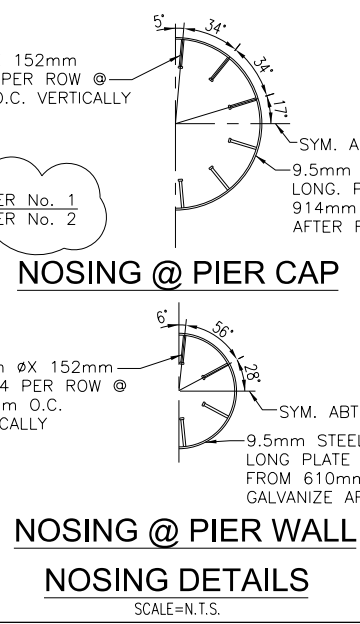
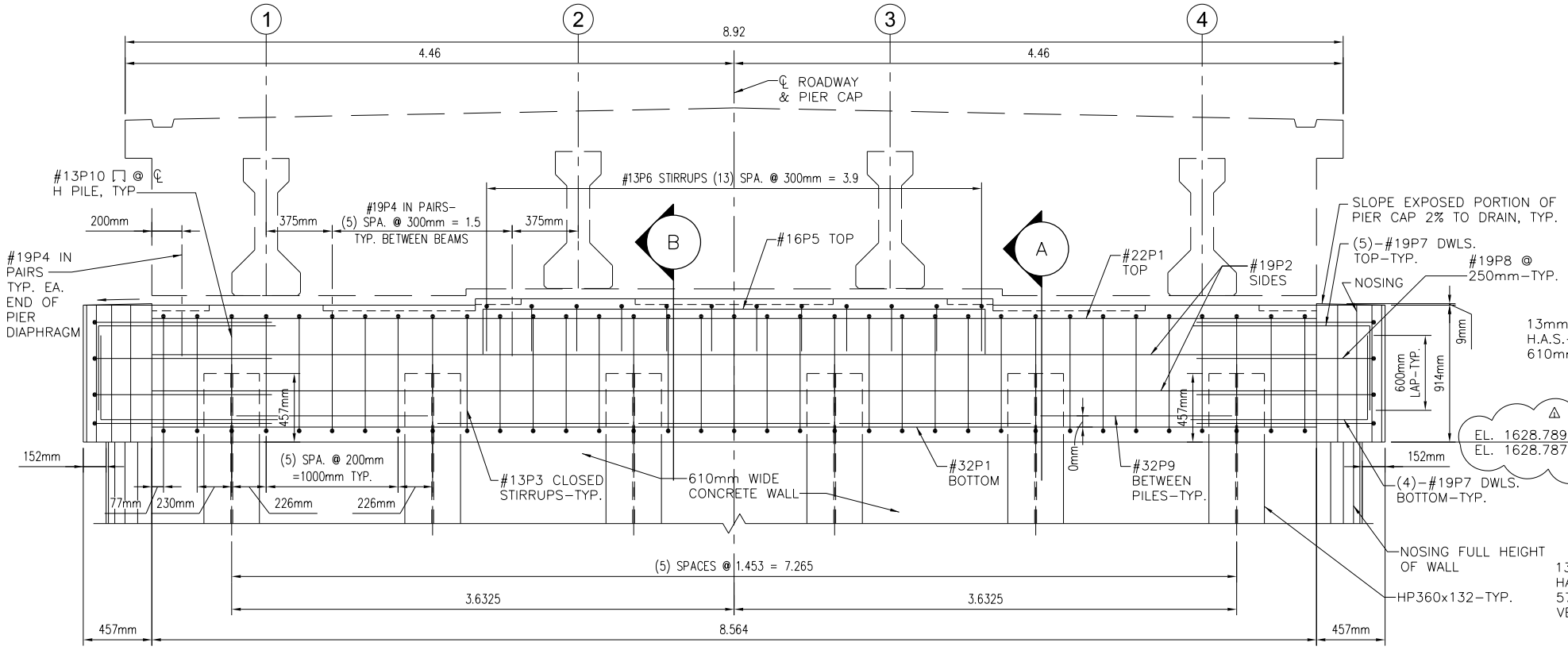
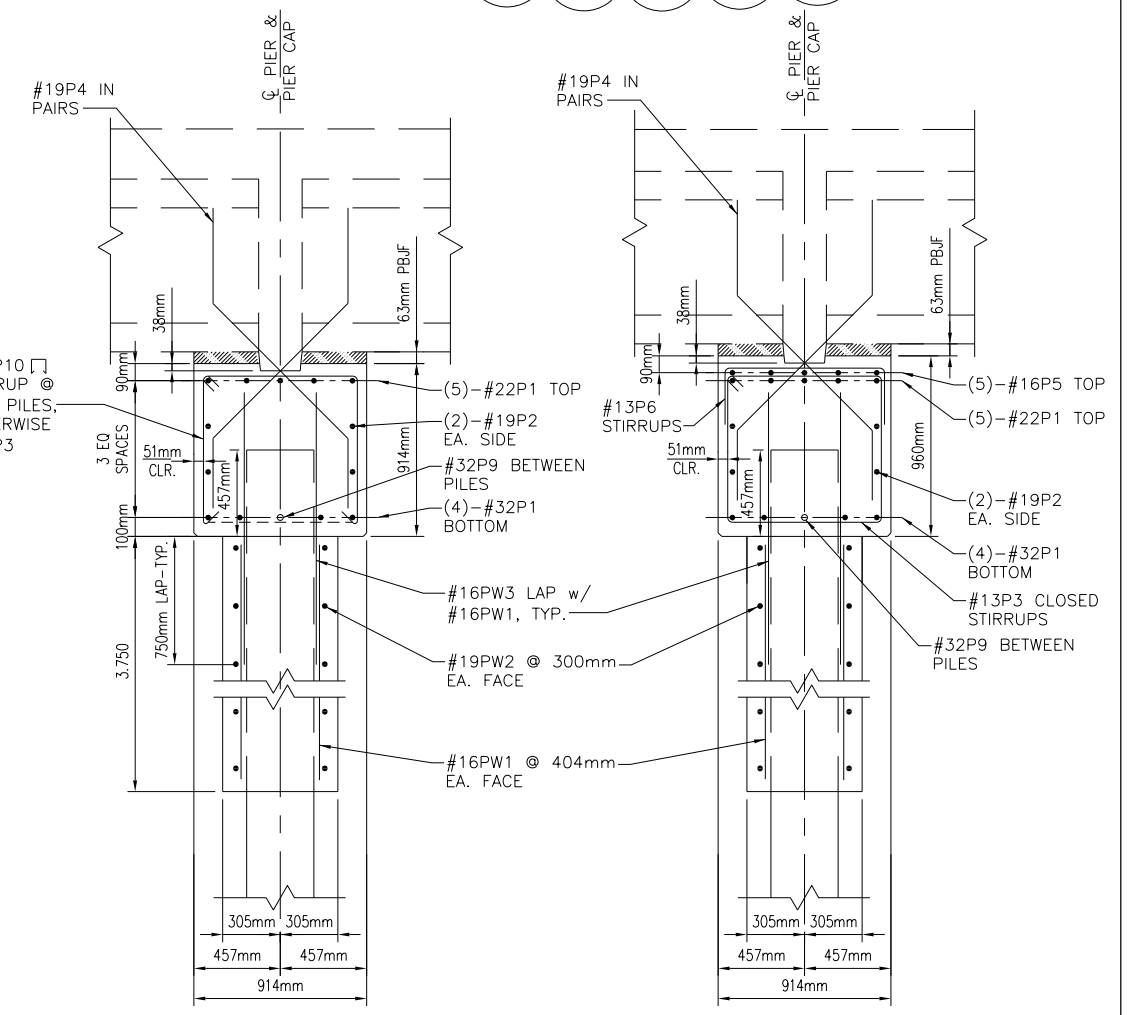
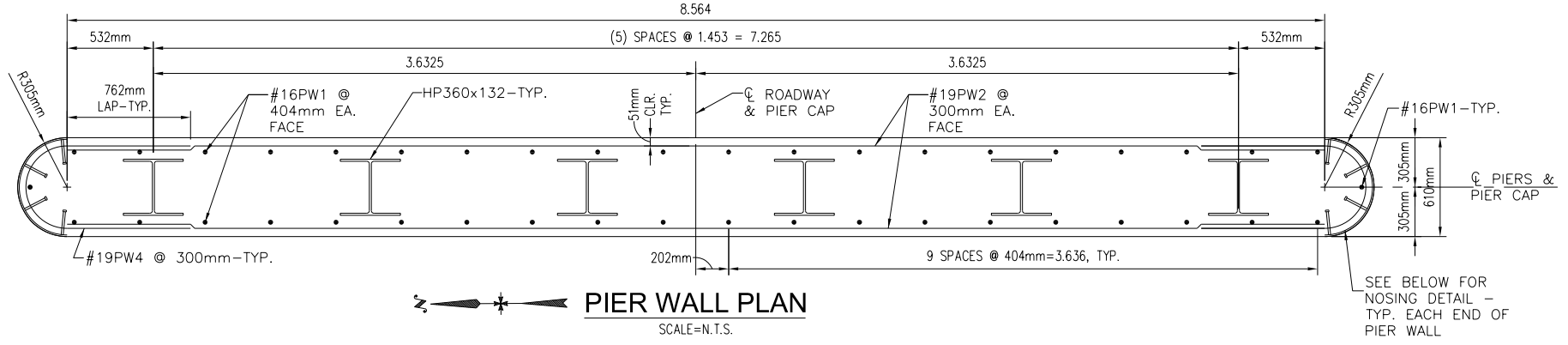
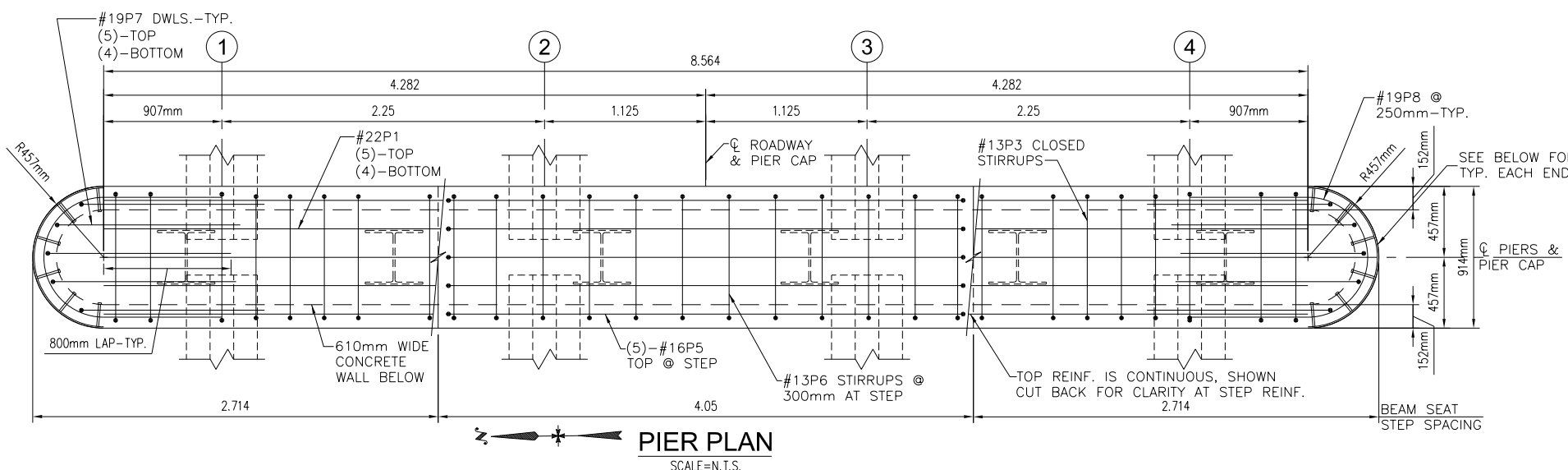
**CHINLE WASH  
ABUTMENT DETAILS**

DESIGNED BY: AJS	REVISED:
DRAWN BY: DBB	BY:
DATE: 5/12/2026	<b>DIBBLE</b>
DWG: B11	



J:\2017\1017064.19\_NDOT\_Many\_Farms\CAD\N8084-B06.dgn

BEAM SEAT ELEVATIONS				
	Beam 1	Beam 2	Beam 3	Beam 4
Pier No. 1	1629.681	1629.726	1629.726	1629.681
Pier No. 2	1629.679	1629.725	1629.725	1629.679



NOTE:  
1. SEE DWG B13 FOR PLAN OF BEARING PADS AND SHEAR KEYS.

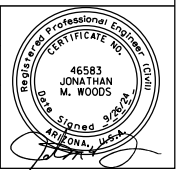


NAVAJO DIVISION OF  
TRANSPORTATION  
DEPARTMENT OF ROADS

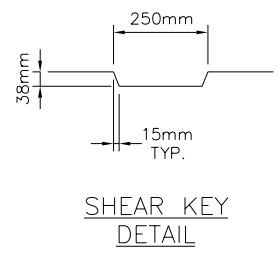
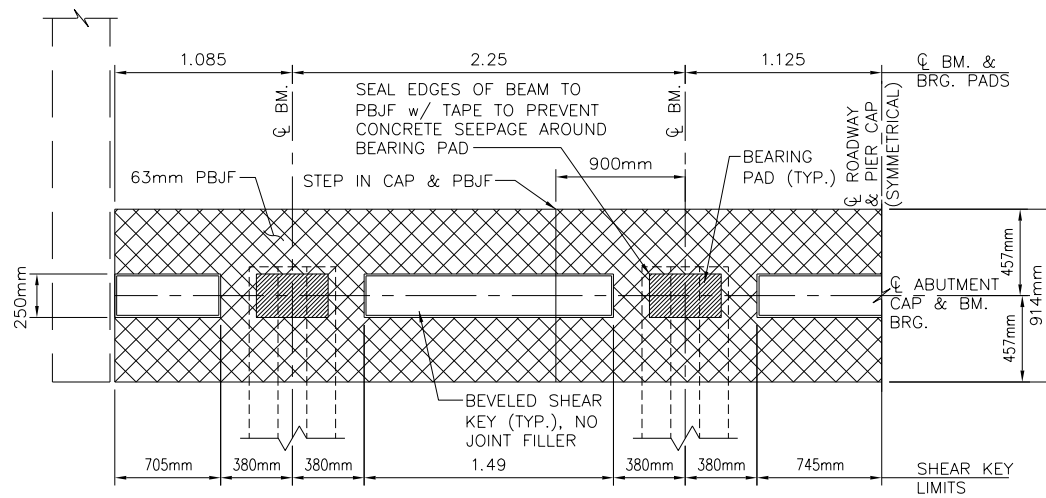
N8084(1)1,2&4 MANY FARMS

**CHINLE WASH  
PIER DETAILS**

DESIGNED BY: AJS	REVISED:
DRAWN BY: DBB	BY:
DATE: 5/12/2026	<b>DIBBLE</b>
DWG: B12	



J:\2017\1017064.19\_NDOT\_Mony\_Farms\CAD\_N8084-B07.dgn



### ELASTOMERIC BEARING PAD SCHEDULE

60 DUROMETER, GRADE 2

LOCATION	DIMENSIONS			NUMBER OF SHIMS	INNER LAMINATION		OUTER LAMINATION		DESIGN LOAD EACH PAD	REQUIRED
	W	L	H		NUMBER	THICK	NUMBER	THICK		
ABUT. No. 1 & 2	380mm	240mm	51mm	4	3	9.5mm	2	4.8mm	DL = 253 kN LL = 358 kN	8
PIER No. 1 & 2	380mm	240mm	51mm	4	3	9.5mm	2	4.8mm	DL = 252 kN LL = 307 kN	16

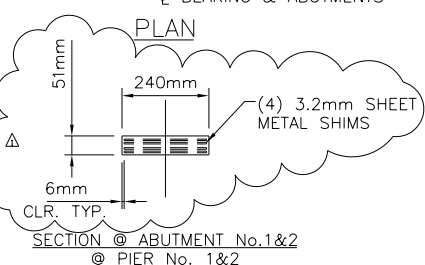
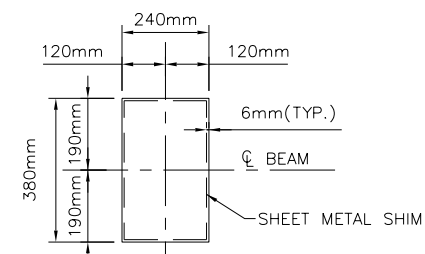
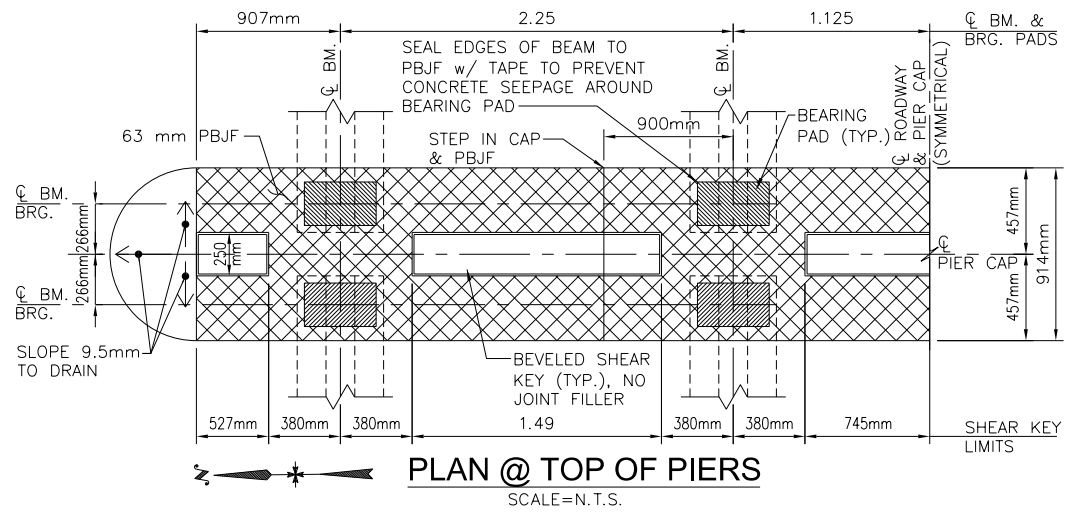
### TABLE OF DIMENSION "T" @ € BEAM BEARING

ABUTMENT No. 1 & 2 and PIER No.1 & No.2

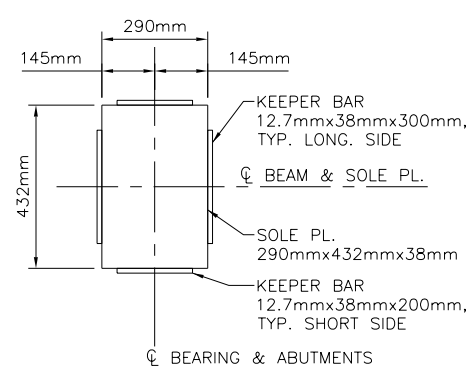
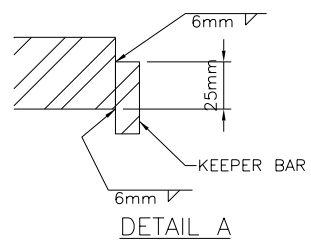
SLAB	216 mm
HAUNCH THICKNESS AT € BEAM	77 mm
BEAM	914mm
SOLE PLATE	38 mm
BEARING PAD	51 mm
DIMENSION "T."	1.296

**NOTES:**

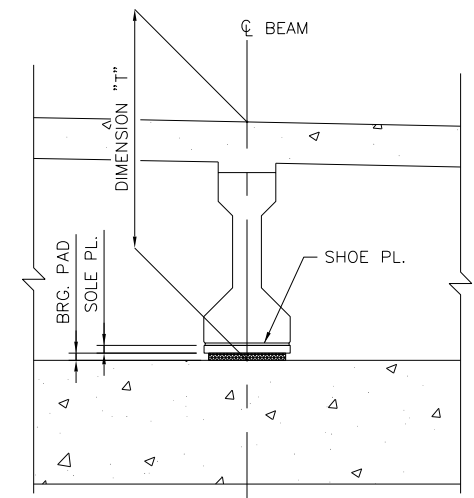
1. THE PLATE THICKNESS IS THE FINISHED THICKNESS.
2. IF MACHINING PROCESSES ARE USES TO ACHIEVE THE REQUIRED FLATNESS TOLERANCES OF THE SOLE PLATES, THE DIRECTION OF MACHINING ON THE SURFACE TO BE IN CONTACT WITH THE ELASTOMERIC PAD SHALL BE PERPENDICULAR TO THE LONGITUDINAL AXIS OF THE BEAM.




**ELASTOMERIC BEARING PAD DETAILS**  
SCALE=N.T.S.



**PLAN(TYPICAL)**  
DETAIL A

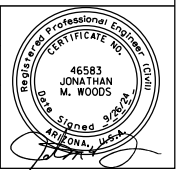


**TYPICAL BEAM BEARING DETAIL AT ABUTMENTS**  
SCALE=N.T.S.

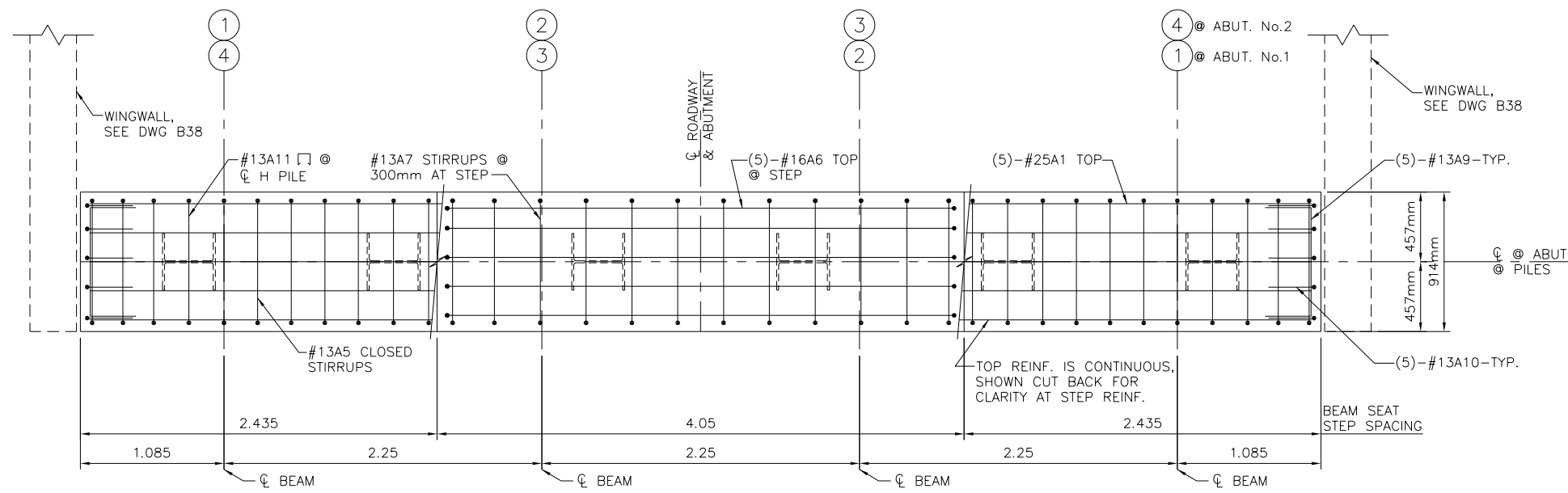

**NAVAJO DIVISION OF TRANSPORTATION DEPARTMENT OF ROADS**  
 N8084(1)1,2&4 MANY FARMS

## CHINLE WASH BEAM BEARING DETAILS

DESIGNED BY: AJS	REVISED:
DRAWN BY: DBB	BY:
DATE: 5/12/2026	<b>DIBBLE</b>
DWG: B13	

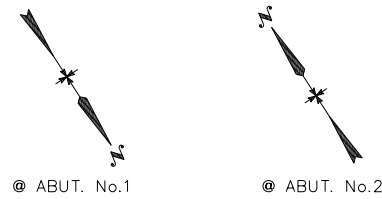


J:\2017\1017064.19\_NDOT\_Many\_Farms\CAD\N8084-B08.dgn



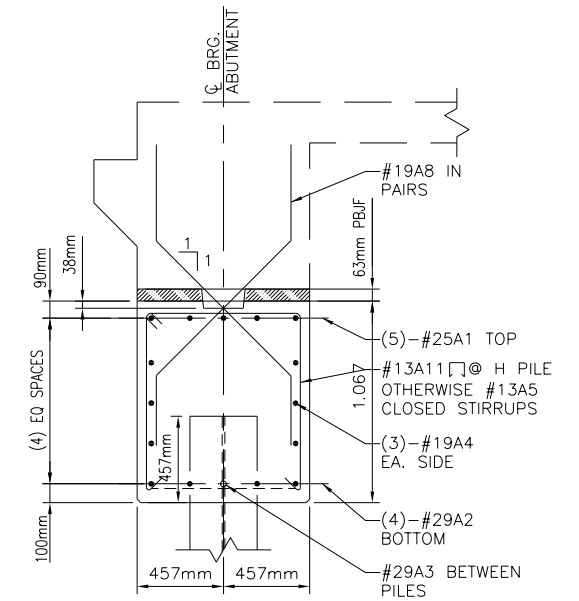
**ABUTMENT PLAN**

SCALE=N.T.S.



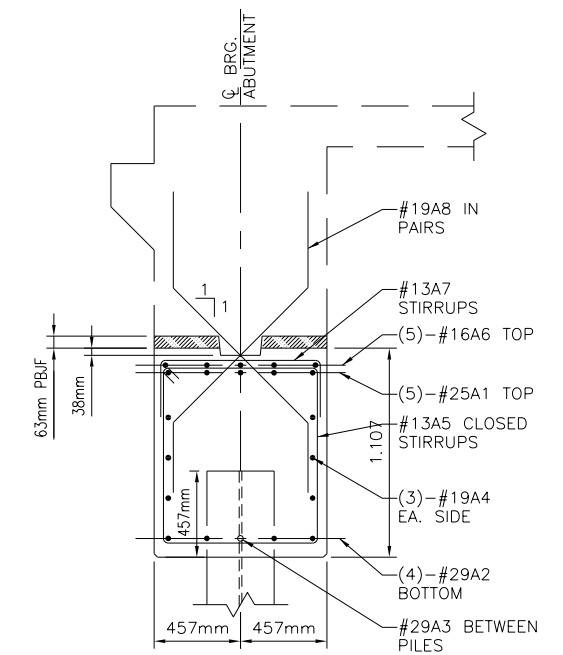
**BEAM SEAT ELEVATIONS**

	Beam 1	Beam 2	Beam 3	Beam 4
Abutment No. 1	1630.444	1630.489	1630.489	1630.444
Abutment No. 2	1630.347	1630.392	1630.392	1630.347



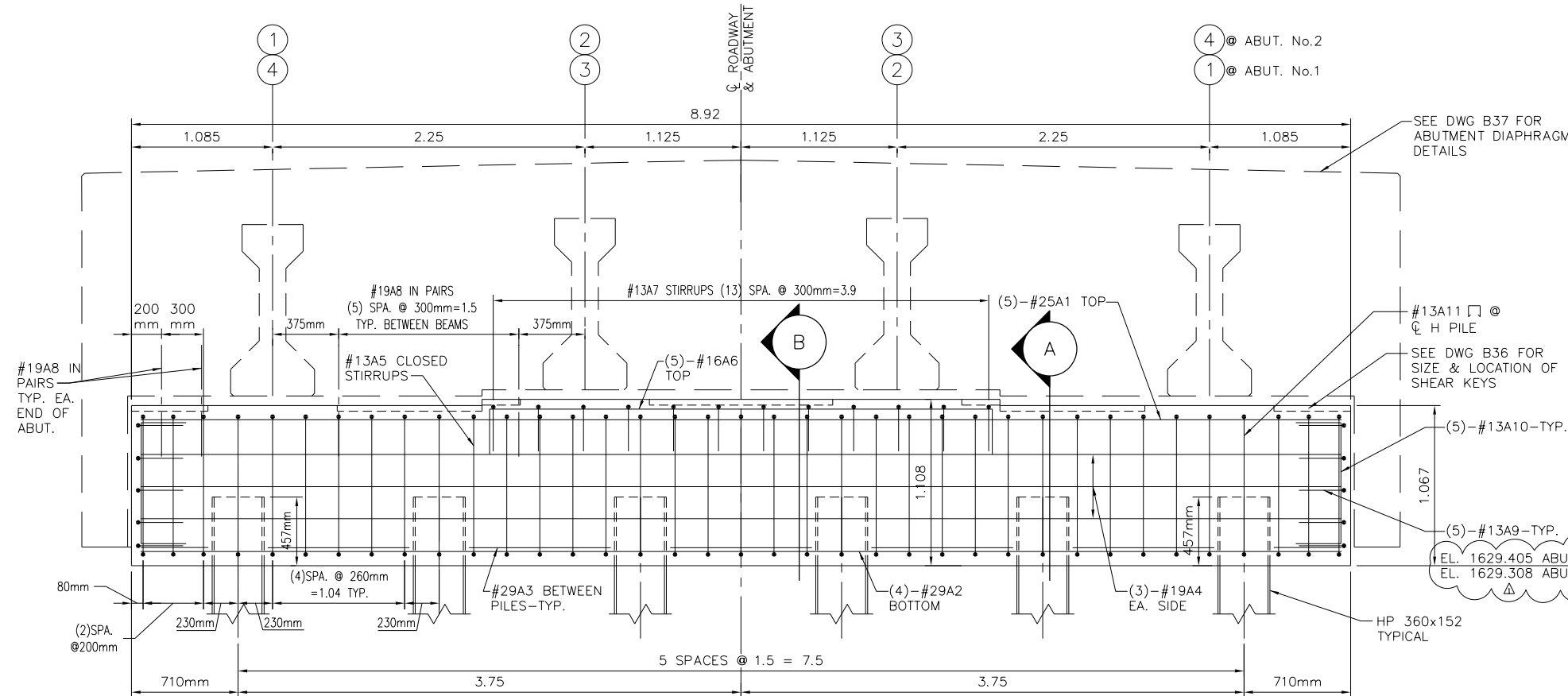
**SECTION A**

SCALE=N.T.S.



**SECTION B**

SCALE=N.T.S.



**ABUTMENT ELEVATION**

SCALE=N.T.S.

(5)-#13A9-TYP.  
EL. 1629.405 ABUT. No. 1  
EL. 1629.308 ABUT. No. 2

NOTE:

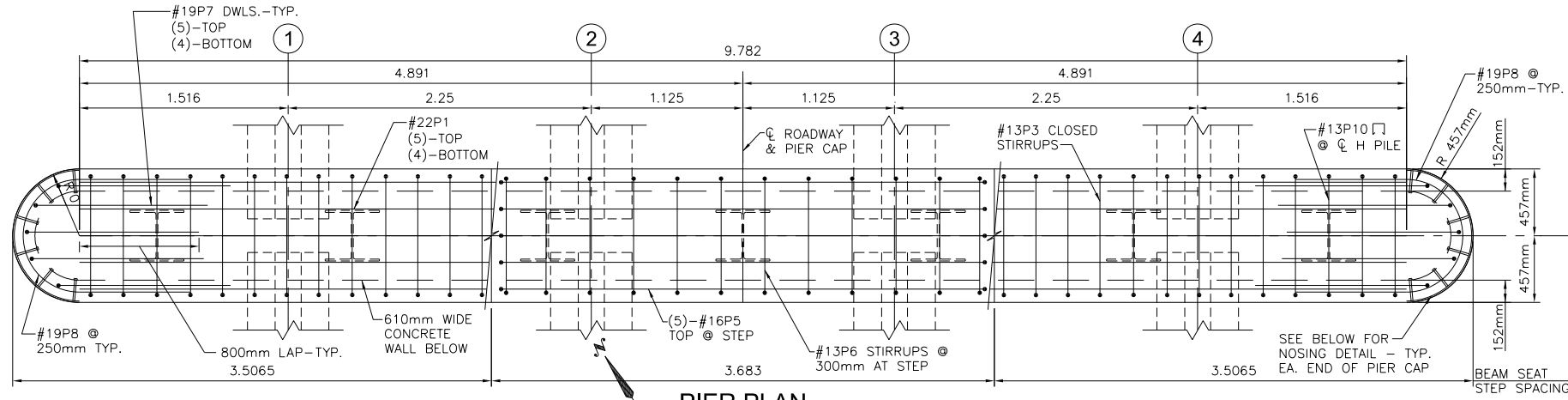
- SEE DWG B36 FOR PLAN OF BEARING PADS AND SHEAR KEYS.

NAVAJO DIVISION OF TRANSPORTATION DEPARTMENT OF ROADS  
N8084(1)1,2&4 MANY FARMS

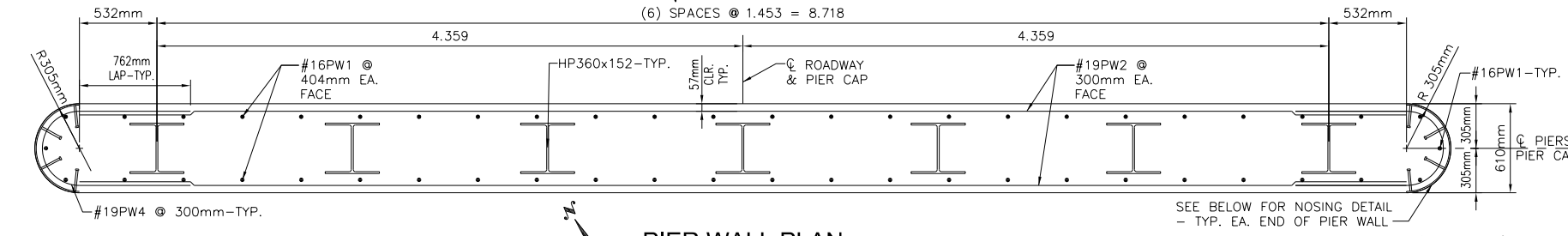
**SHEEP DIP WASH ABUTMENT DETAILS**

DESIGNED BY: AJS	REVISED:
DRAWN BY: DBB	BY:
DATE: 5/12/2026	<b>DIBBLE</b>
DWG: B34	

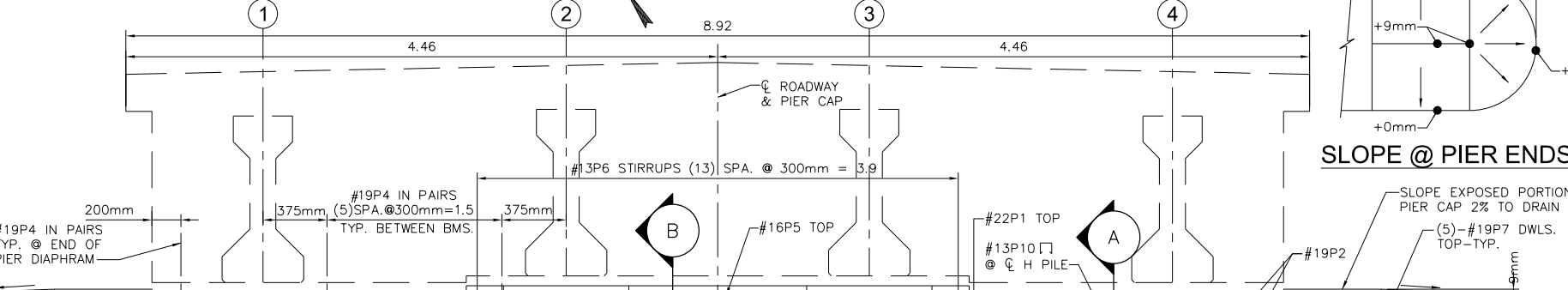
J:\2017\1017064.19\_NDOT\_Mony\_Farms\CAD\N8084-SDB04.dgn



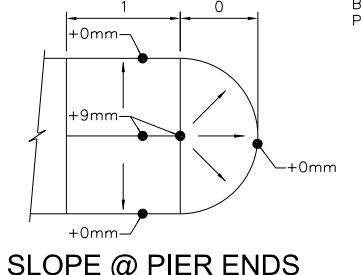
**PIER PLAN**  
SCALE=N.T.S.



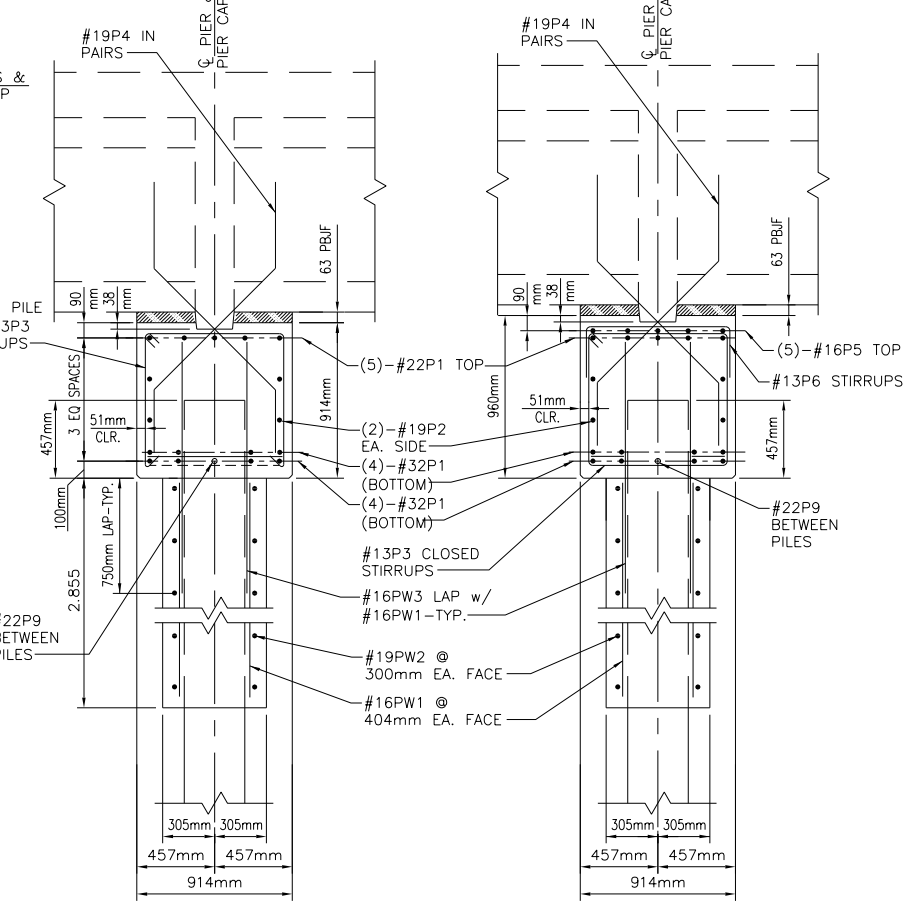
**PIER WALL PLAN**  
SCALE=N.T.S.



**PIER ELEVATION**  
SCALE=N.T.S.



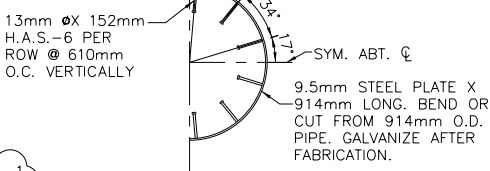
**SLOPE @ PIER ENDS**



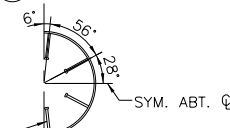
**SECTION A**  
SCALE=N.T.S.

**SECTION B**  
SCALE=N.T.S.

NOTE:  
SEE DWG B36 FOR  
PLAN OF BEARING  
PADS AND SHEAR  
KEYS.



**NOSING @ PIER CAP**



**NOSING @ PIER WALL**

**NOSING DETAILS**  
SCALE=N.T.S.

BEAM SEAT ELEVATIONS				
	Beam 1	Beam 2	Beam 3	Beam 4
Pier No. 1	1630 514	1630 559	1630 559	1630 514
Pier No. 2	1630 481	1630 526	1630 526	1630 481

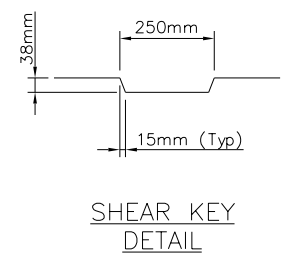
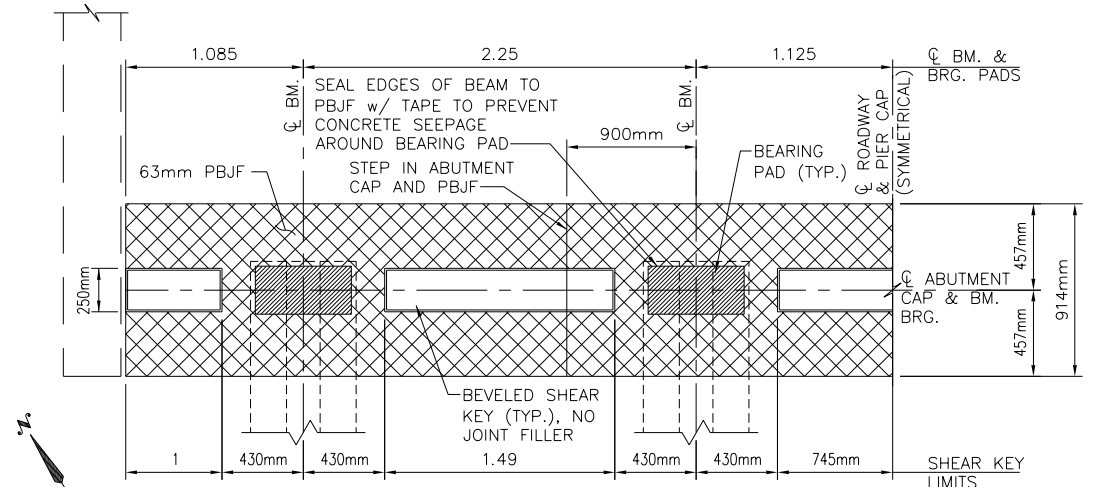
NAVAJO DIVISION OF  
TRANSPORTATION  
DEPARTMENT OF ROADS  
N8084(1)1,2&4 MANY FARMS

**SHEEP DIP WASH  
PIER DETAILS**

DESIGNED BY: AJS	REVISED:
DRAWN BY: DBB	BY:
DATE: 5/12/2026	<b>DIBBLE</b>
DWG: B35	



J:\2017\1017064.19\_NDOT\_Many\_Farms\CAD\N8084-SDB05.dgn



### ELASTOMERIC BEARING PAD SCHEDULE

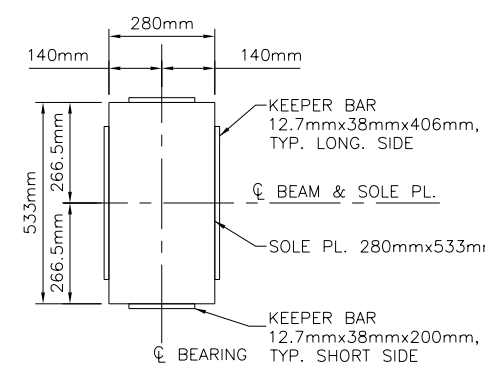
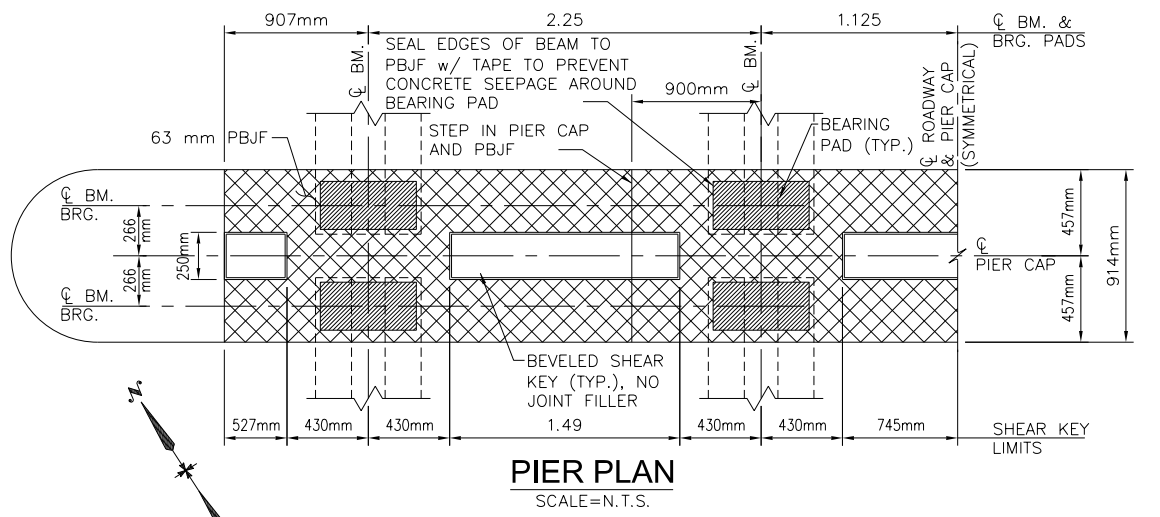
60 DUROMETER, GRADE 2

LOCATION	DIMENSIONS			NUMBER OF SHIMS	INNER LAMINATION		OUTER LAMINATION		DESIGN LOAD EACH PAD	REQUIRED
	W	L	H		NUMBER	THICK	NUMBER	THICK		
ABUT. No. 1 & 2	407mm	254mm	51mm	4	3	9.5mm	2	4.8mm	DL = 367.15 kN LL = 339.06 kN	8
PIER No. 1 & 2	413mm	254mm	51mm	4	3	9.5mm	2	4.8mm	DL = 376.66 kN LL = 345.58 kN	16

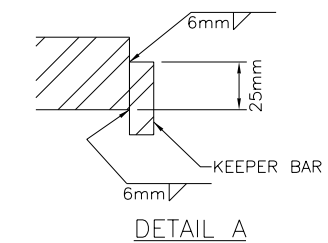
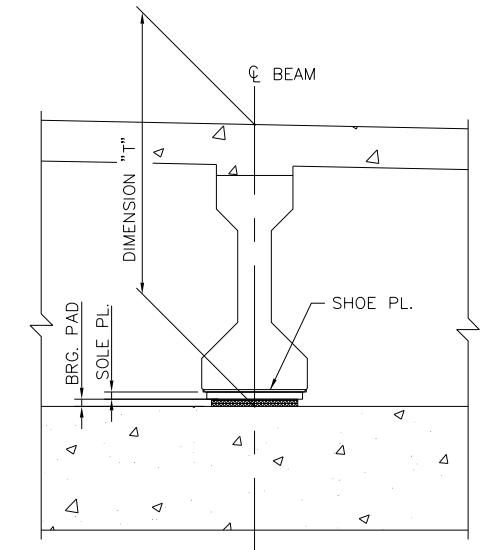
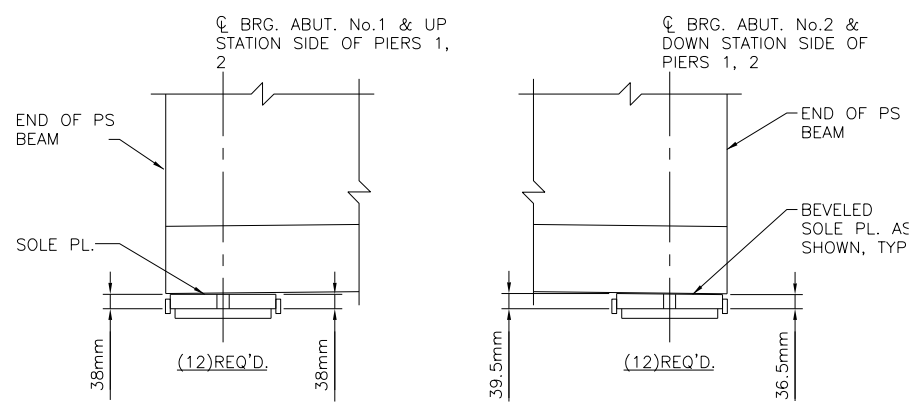
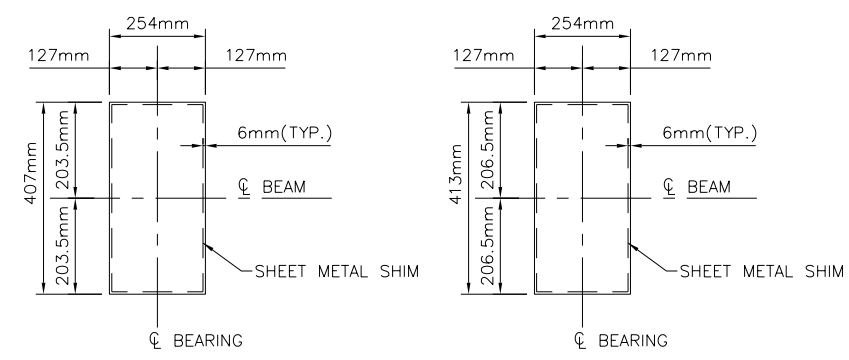
### TABLE OF DIMENSION "T" @ CL BEAM BEARING

ABUTMENT No. 1 & 2 AND PIER No. 1 & 2

SLAB	216 mm
HAUNCH THICKNESS AT C.L. BEAM	77 mm
BEAM	1,143
SOLE PLATE	38 mm
BEARING PAD	51 mm
DIMENSION "T"	1.525



- NOTES:
- THE PLATE THICKNESS IS THE FINISHED THICKNESS.
  - IF MACHINING PROCESSES ARE USED TO ACHIEVE THE REQUIRED FLATNESS TOLERANCES OF THE SOLE PLATES, THE DIRECTION OF MACHINING ON THE SURFACE TO BE IN CONTACT WITH THE ELASTOMERIC PAD SHALL BE PERPENDICULAR TO THE LONGITUDINAL AXIS OF THE BEAM.



NAVAJO DIVISION OF TRANSPORTATION DEPARTMENT OF ROADS  
N8084(1)1,2&4 MANY FARMS

## SHEEP DIP WASH BEAM BEARING DETAILS

DESIGNED BY: AJS REVISIONS:  
DRAWN BY: DBB BY:  
DATE: 5/12/2026  
DWG: B36

**DIBBLE**

Professional Engineer  
46583 JONATHAN M. WOODS  
Signed 9/28/24

J:\2017\1017064.19\_NDOT\_Many\_Farms\CAD\N8084-SDB06.dgn



Navajo Division of Transportation  
Bid No. 26-05-4127SB  
N8084(1)1,2&4 Road Project in Many Farms, AZ  
**MANDATORY PRE-PROPOSAL MEETING**  
May 14, 2026, 10 AM MDT

The purpose of this Mandatory Pre-Proposal Meeting is to receive presentations on the Project Scope of Work and the necessary items required to be submitted as part of the Request for Proposal (RFP). *Meeting notes in red.*

**1. Introductions & Sign-In Sheet**

**a) Microsoft Teams meeting:**

A **MANDATORY** Virtual Pre-Proposal Meeting will be held on Thursday, May 14, 2026, at 10:00 AM MDT. The link for the web meeting and conference call number is as follows:

<https://teams.microsoft.com/meet/231419751933045?p=q2LtKBFQEfPjvTYmLh>

By Phone: +1 480-378-0989 Conference ID: 438541639

**b) Sign-In Sheet** – Please submit your contact information to Ardaniel Begay via email at [abegay@navajodot.org](mailto:abegay@navajodot.org) with subject line: **Attendance N8084 Pre-Proposal Mtg**

**c) Chat:** Please state your name, company, and contact information in the Microsoft Teams chat.

**d) If Attending by Phone:** state your name and company at the beginning of the recording.

**e) Questions:** Please wait for questions at the end; feel free to put questions in the chat. Thanks.

*Recording: meeting recording started at approximately 10:00 AM MDT.*

**2. Welcome – Darryl Bradley, Principal Civil Engineer, Navajo DOT**

*Mr. Bradley welcomed contractors and thanked participants for attending the mandatory pre-proposal meeting.*

*Navajo DOT noted the community has awaited the project, and leadership is looking to begin construction during the summer of 2026.*

**3. General Announcements – Navajo DOT**

**a.** Information is available on the Navajo DOT website:

<https://navajodot.org/rfp%2Frfq>

**b.** Inquiries on this RFP must be submitted in writing via email to Ardaniel Begay, Principal Contract Analyst.

Ardaniel Begay

Navajo Division of Transportation

Work Phone: (505) 481-2651

Email: [abegay@navajodot.org](mailto:abegay@navajodot.org)

**c.** Contractors are encouraged to conduct a field review of the project site on their own. There is no formal field review scheduled.

**4. Schedule of Activities – Navajo DOT**



**Navajo Division of Transportation  
 Bid No. 26-05-4127SB  
 N8084(1)1,2&4 Road Project in Many Farms, AZ  
 MANDATORY PRE-PROPOSAL MEETING  
 May 14, 2026, 10 AM MDT**

- a. The Schedule of Activities is shown on page 3 of the RFP

Schedule of Activities	Timelines
Mandatory Virtual Pre-Proposal Meeting	Thursday, May 14, 2026, at 10:00 a.m. MDT
Prospective respondents "Inquiry Timeline." Questions regarding this RFP must be submitted in writing by email prior to this date. No questions accepted after this date.	Tuesday, May 26, 2026, by 12:00 p.m. MDT
Written responses to written questions will be distributed in writing through an Addendum issued on this date.	Friday, May 29, 2026, by 10:00 a.m. MDT
Due date for all proposals	Thursday, June 4, 2026, by 4:00 p.m. MDT
Opening of proposals and evaluations by the Review Panel	Between June 8, 2026 to June 12, 2026
Selection of Contractor	Week of June 15, 2026

- b. Estimated Notice to Proceed Date – September 2026

**5. Project Description & Scope of Work – Dibble Engineering**

- a. Project Plans, Contract Book, ROW map, and Electronic Bid Schedule are available for download from the Navajo DOT website. <https://navajodot.org/rfp%2Frfq>
- b. Funding Source is Federal Highway Administration (FHWA) Tribal Transportation Program.
- c. **Scope of Work:** The N8084 Road Project in Many Farms, AZ is 3.86 miles long and consists of grading and roadway excavation; two 3-span concrete girder bridges; placement of aggregate base course and asphalt pavement; installation of drainage structures, concrete box culvert, fencing, cattleguards, signs, striping, guardrail, and other miscellaneous construction activities. The project also includes utility coordination and relocation efforts with the Navajo Tribal Utility Authority, *Indian Health Service*, and other utility providers, complying with environmental and cultural resources requirements, and coordination of required permits and approvals, including the Arizona Department of Transportation Encroachment Permit. *Project starts at US 191 near Milepost 458 and proceeds east. Work inside ADOT ROW includes widen turnout and new temporary signs. Project secured a Navajo Nation Forestry Permit for tree removals.*
- d. **Completion Time – Per Article 4.3 of the NDOT Contract - Agreement.**  
 The Work will be substantially completed within 280 working days after the date when the Contract Times commence (Notice to Proceed) to run as provided in Paragraph 2.3 of the General Conditions and completed and ready for final acceptance in accordance with Paragraph 14.7 of the General Conditions within 300 working days after the date when the Contract Time commences to run.

Please note that the above durations do not take into consideration non-working days for weather conditions, shutdowns during winter suspension(s) and holidays.



**Navajo Division of Transportation**  
**Bid No. 26-05-4127SB**  
**N8084(1)1,2&4 Road Project in Many Farms, AZ**  
**MANDATORY PRE-PROPOSAL MEETING**  
**May 14, 2026, 10 AM MDT**

See Article 12.3 of Standard General Conditions, Exhibit A for requirements related to Delay claims.

- e. **Bid Schedule** – The Bid Schedule Excel file has been provided as part of the bid documents.
  - f. **Fuel Cost Adjustment** – The Contracting Officer (CO) will adjust monthly progress payments up or down as appropriate for cost fluctuations in diesel fuel as determined in accordance with these special provisions. A fuel cost adjustment will be made when fluctuations in the price of diesel fuel, in excess of 15 percent, occur throughout this contract. The CO will not provide such adjustments for fluctuations in the price of diesel fuel of 15 percent or less. No adjustments will be made for fluctuations in the price of fuels other than diesel. See Section 109.06 of Exhibit F of the Contract Book.
  - g. **Project Specifications** – This project follows the FP-14 STANDARD SPECIFICATION FOR CONSTRUCTION OF ROADS AND BRIDGES ON FEDERAL HIGHWAY PROJECTS. The Link to the FP-14 Specifications is provided in Exhibit F on Page 133 of the contract book.
- 6. Coordination with BIA Navajo Region Branch of Transportation (NRBOT) – Dibble Engineering**
- a. The project was designed by Dibble Engineering, who will maintain the Engineer of Record responsibilities.
  - b. All coordination with the BIA NRBOT will be conducted by Navajo DOT and/or the designated project Construction Manager (CM) *Dibble CM*.
- 7. Coordination with Arizona Department of Transportation (ADOT) – Dibble Engineering**
- a. Encroachment Permit Required as part of this project.
  - b. The selected contractor would need to provide insurance to ADOT.
- 8. Utility Coordination – See Exhibit A, Article 7.1 of the Contract Book; Section 107.02 of the FP-14 Specifications; Exhibit C, Number 10, Item F, Page 105 of the Contract Book; and Exhibit F, Section 107.12, Page 142–144 of the Contract Book**
- a. **NTUA Water/Wastewater** – NTUA does have water lines and valves within the project area. The Contractor will construct waterline relocations and/or installation of any steel casings at two locations in accordance with NTUA standards and the project plans. NTUA does not have wastewater facilities within the project.
  - b. **NTUA Power** – NTUA Power has existing electric facilities within the project corridor that require coordination during construction. Electric facilities must have their clearance verified, or poles which may need to be relocated or braced during construction. NTUA Power will relocate four (4) power poles. *The intent is to have NTUA relocate power poles prior to construction and complete the work by August 1, 2026. There is a line item on the Bid Schedule Item No. 64503-1000 Utility Company Compensation for \$60,000.00 that the contractor will use to pay NTUA for the relocation work.*



**Navajo Division of Transportation**  
**Bid No. 26-05-4127SB**  
**N8084(1)1,2&4 Road Project in Many Farms, AZ**  
**MANDATORY PRE-PROPOSAL MEETING**  
**May 14, 2026, 10 AM MDT**

**c. Indian Health Services** - IHS has a planned future 152mm (*6-inch*) waterline and associated valves within the project corridor. The NDOT contractor is responsible for coordinating with IHS and installing steel casings in accordance with IHS standards and project plans.

If the IHS waterline project is constructed ahead of or concurrently with the roadway project, the contractor must maintain reasonable access for IHS construction activities and prioritize installation of the steel casing crossing if it has not yet been completed.  
*IHS may need to cut the fence to do their work.*

**9. Navajo Nation Business Regulatory Department – Navajo DOT**

**a. Navajo Business Opportunity Act & Source List**

<https://navajoeconomy.org/business-regulatory/>

<https://navajoeconomy.org/business-regulatory/nboa-source-listing/>

<https://navajoeconomy.org/wp-content/uploads/2025/02/NBOA-Source-List-2025.02.4.pdf>

**b. Subcontracting Plan**

**10. Review of Request for Proposal – Navajo DOT**

- a. Page 2 - proposals must be submitted to Navajo DOT at the address shown. Electronic proposals will not be accepted.
- b. Page 5 - all work performed on this project is subject to the 6% Navajo Sales Tax.
- c. Page 5 – evaluation procedure and criteria, including the scoring criteria.
- d. Page 6 – the proposals will be opened and evaluated in accordance with the Navajo Nation Business Opportunity Act.
- e. Pages 7 to 11 – Outline of Request for Proposal
- f. Proposal must be submitted in a sealed envelope.
- g. Bid Schedule must be submitted in a separate sealed envelope clearly marked as “Bid Schedule – “RFP No. 26-05-4127SB, “N8084(1)1,2&4 Road Project in Many Farms, AZ” and with Respondent’s information.  
An excel spreadsheet version of the Bid Schedule is included on the website.
- h. Prime Contractor requirements – Self-Perform 50% of the work. See Special Contract Requirement, Clause NN-236-1.
- i. Davis Bacon Wage Rates (Exhibit H of the Contract Book) apply for this Project. Make sure that you follow the appropriate wages for the state/county in which the project is located.

**11. Addendum(s) – Navajo DOT**

- a. Addendum(s) will be available for download from the Navajo DOT website. It is important that respondents check the Navajo DOT website for addendum(s).



Navajo Division of Transportation  
Bid No. 26-05-4127SB  
N8084(1)1,2&4 Road Project in Many Farms, AZ  
MANDATORY PRE-PROPOSAL MEETING  
May 14, 2026, 10 AM MDT

- b. Addendum Acknowledgment Form

**12. Submitted Questions To Date:**

- a. Water Source? Will you need a water Permit? Yes, please obtain a Water Use Permit from the Navajo Nation Technical, Construction and Operations Branch, Contact information: Katrina L. ~~Shurley~~ Sam, Civil Engineer

W: (928)729-4130

C: (928)205-1443

E-mail: [ksam@navajo-nsn.gov](mailto:ksam@navajo-nsn.gov)

Website: <http://watercode.navajo-nsn.gov>

Link for Water Use Permit:

[TCOB- Water Use Permit.pdf](#)

- b. Chinle Wash – Sheet 62 of 109 (DWG B13)

The bearing pad detail shows a thickness of 25mm. However, the bearing pad schedule calls for an “H” dimension of 51mm, which I’m assuming is related to thickness. Please clarify what is required.

*Bearing pad details (Chinle Wash – Sheet 62 of 109): question regarding 25 mm thickness vs. schedule calling 51 mm; response: will be addressed via Addendum No. 1 with plan revisions/clarification.*

- c. Sheep Dip Wash – Sheet 85 of 109 (DWG B36)

The bearing pad detail shows a thickness of 25mm. However, the bearing pad schedule calls for an “H” dimension of 51mm, which I’m assuming is related to thickness. Please clarify what is required

The bearing pad details show 3 metal shims. However, the bearing pad schedule calls for 2. Please clarify.

*Bearing pad details (Sheep Dip Wash – Sheet 85 of 109): question regarding 25 mm thickness vs. schedule calling 51 mm and shims count (3 shown vs. 2 scheduled); response: will be addressed via Addendum No. 1 with plan revisions/clarification.*

- d. *Will you provide an attendance sheet? The attendance sheet will be provided as part of Addendum No. 1 (compiled from chat, emailed attendance, and recording).*

*Closing Remarks*

- Mr. Bradley thanked attendees for their time and interest.*
- Navajo DOT emphasized the importance of traffic control and safety due to access to homes and proximity to US 191.*
- Contractors: submit questions/inquiries by May 26, 2026 (per schedule).*
- Meeting adjourned at approximately 10:30 AM MDT.*



Navajo Division of Transportation  
Bid No. 26-05-4127SB  
N8084(1)1,2&4 Road Project in Many Farms, AZ  
MANDATORY PRE-PROPOSAL MEETING  
May 14, 2026, 10 AM MDT

## N8084 Pre-Proposal Meeting Sign-In Sheet

---

Name	Company	Email	Phone
Darryl Bradley	Navajo DOT	dbradley@navajodot.org	505-481-2683
Ardaniel Begay	Navajo DOT	abegay@navajodot.org	505-481-2651
Drew Spear	Dibble	drew.spear@dibblecorp.com	602-346-5754
Tim Wolf	Dibble	tim.wolfe@dibblecorp.com	602-346-5717
Valinda Shirley	Dibble	valinda.shirley@dibblecorp.com	505-788-7298
Byron Shorty	Dibble CM	bshorty@dibblecm.com	520-302-8298
KC Brandon	Dibble CM	kcbrandon@dibblecm.com	602-346-5780
Lamoni Yazzie	American First Solutions LLC	lyazzie@american-1st.org	480-267-0059
David Marcum	American First Solutions LLC	dmarcum@american-1st.org	734-777-1782
Martin Glowa	Arrow Indian Contractors	martin.glowa@arrowindian.com	480-721-9615
Jeremy Greenwald	Arrow Indian Contractors	jgreenwald@arrowindian.com	928-291-9527
Derrick Joe	DJOE Construction LLC	djoe@djoconstruction.com	928-245-3422
Jason Creach	FNF Construction	jcreach@fnfinc.com	



Navajo Division of Transportation  
Bid No. 26-05-4127SB  
N8084(1)1,2&4 Road Project in Many Farms, AZ  
MANDATORY PRE-PROPOSAL MEETING  
May 14, 2026, 10 AM MDT

Name	Company	Email	Phone
Joe Skipper	FNF Construction	jskipper@fnfinc.com	480-784-2910
Sarah Gray	FNF Construction	sgray@fnfinc.com	480-784-2910
Courtney Hughes	GEOMAT Testing	courtney.hughes@geomatengineering.com	505-409-6776
Nathan Compton	GEOMAT Testing	ncompton@teamues.com	505-327-7928
Dan Ball	Granite Construction	dan.ball@gcinc.com	520-904-2450
William Vail	Granite Construction	william.vail@gcinc.com	
Katherine Holiday	IINA BA Inc.	kholiday@iinaba.com	505-327-1072
Luke Simons	Kimo Constructors	luke@kimonm.com	719-207-5189
Jesse Fabish	KW Construction	jessef@kwconstructionco.com	480-800-1249
Trace Musgrave	Meridian Engineering Co	t.musgrave@meridiancon.net	505-967-9517
Joe Dutson	Mountain High Excavating LLC	joe@mtnhighex.com	
Stanley Charley	Navajo Engineering and Construction Authority (NECA)	stanley.charley@navajo.net	(505) 613-2334
Jamie Sagg	NECA	jamie@navajo.net	505-543-9102
Tariah Yazzie	Prestigious Construction LLC	Estimator1.construction@gmail.com	505-488-2333



**Navajo Division of Transportation**  
**Bid No. 26-05-4127SB**  
**N8084(1)1,2&4 Road Project in Many Farms, AZ**  
**MANDATORY PRE-PROPOSAL MEETING**  
**May 14, 2026, 10 AM MDT**

<b>Name</b>	<b>Company</b>	<b>Email</b>	<b>Phone</b>
Zane Munoz	Prestigious Construction LLC	prestigiousconstruction505@gmail.com	505-870-4341
Donny Dare	Prestigious Paving LLC	donny@prestigious-paving.com	505-488-2333
David Harrington	SEMA Construction	dharrington@sema.inc	951-760-4067
Sean Aho	SEMA Construction	saho@sema.inc	760-688-9190
Laiba Sheraz	SEMA Construction inc	Estimating.ca@semaconstruction.com	760-573-3798
Jared Therre	Sunland Asphalt	jtherre@sunlandasphalt.com	480-932-5948
Joe Sedillo	Totsoh Corporation	totsohcorporation@yahoo.com	
Allen Higgins	WCA Construction LLC		970-749-7221
James Melvin	WCA Construction LLC	jmelvin@wcaconstruction.com	
Mark Pritchard	White Cap	mark.pritchard@whitecap.com	714-948-0162