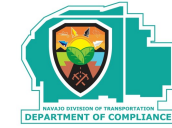


DEPARTMENT OF COMPLIANCE STAFF

NAME	Title	Email
ANJANETTE OWENS	Department Manager	aowens@navajodot.org
MICHELLE Hoskie	Administrative Assistant	mhoskie@navajodot.org
LEMONT YAZZIE SR	GIS Supervisor/RLS	lyazzie@navajodot.org
RAYE-LITA DUBOISE	Principal Eng. Tech	rduboise@navajodot.org
ALDEN WATCHMAN	Principal Eng. Tech	awatchman@navajodot.org
LEIGH COMINIELLO	Supervisory Archaeologist	compliance@navajodot.org
ETTIE ABASTA	Senior Archaeologist	eabasta@navajodot.org
ELISA ARVISO	Senior Environmental Engineer	earviso@navajodot.org
TATJANA WOODY	Geospatial Information Systems Analyst	schischilly@navajodot.org
STEVEN CHISCHILLY	Senior Environmental Specialist	schischilly@navajodot.org
PAMELA KYSELKA	Environmental Specialist	pkyselka@navajodot.org
MALIK SCOTT	Environmental Specialist	mscott@navajodot.org
BRANDON LIZER	Intern	blazer@navajodot.org
HOWARD MARTINEZ	Land Agent	hmartinez@navajodot.org
HEATHER SPRINGER	Senior Programs & Projects Specialist	hspringer@navajodot.org

Navajo Division of Transportation
 Department of Compliance (Project Management)
 PO Box 4620
 Window Rock, Arizona 86515

DEPARTMENT OF COMPLIANCE



Vision Statement

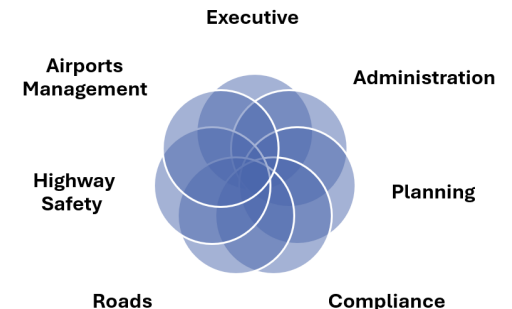
To serve the Navajo Nation by providing efficient and accurate project services and studies and to preserve and protect the Navajo Nation's natural and cultural interests.

Mission Statement

To always provide the highest level of professional land surveying, archaeological and environmental services and to provide the most efficient and safe Navajo Nation transportation infrastructure.

Contact Information
 Phone: (505) 481-2018
 (New Number)
 Fax: (505) 481-2948

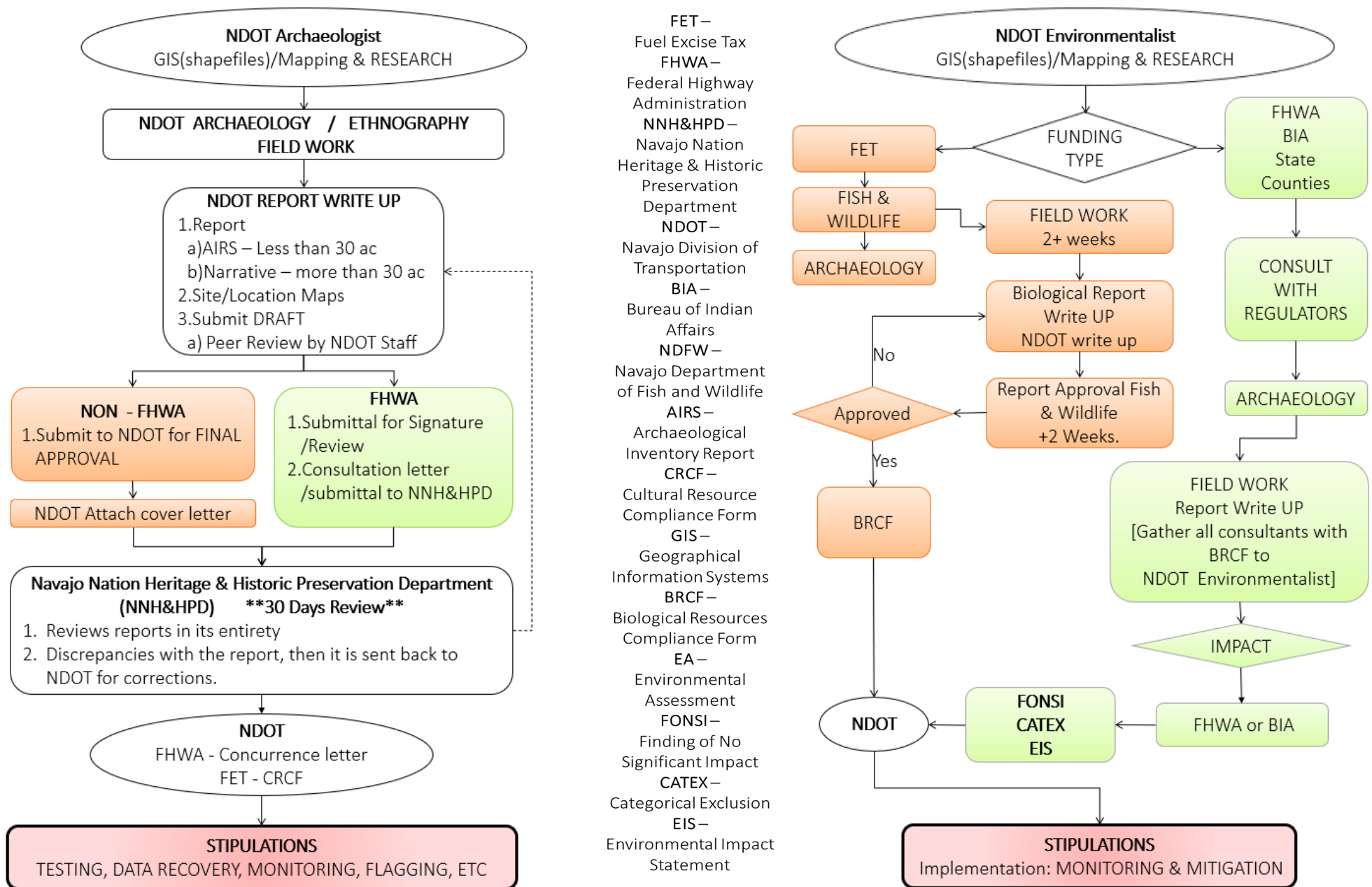
Contact Information
 Phone: (505) 481-2018
 (New Number)
 Fax: (505) 481-2948



ARCHAEOLOGY PROCESS

ENVIRONMENTAL PROCESS

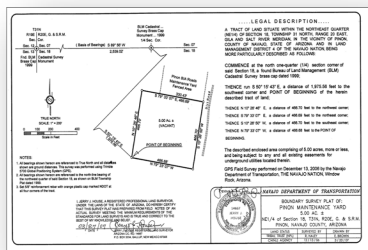
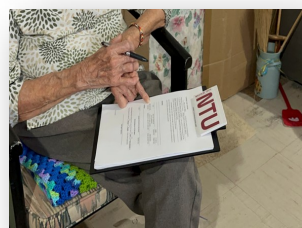
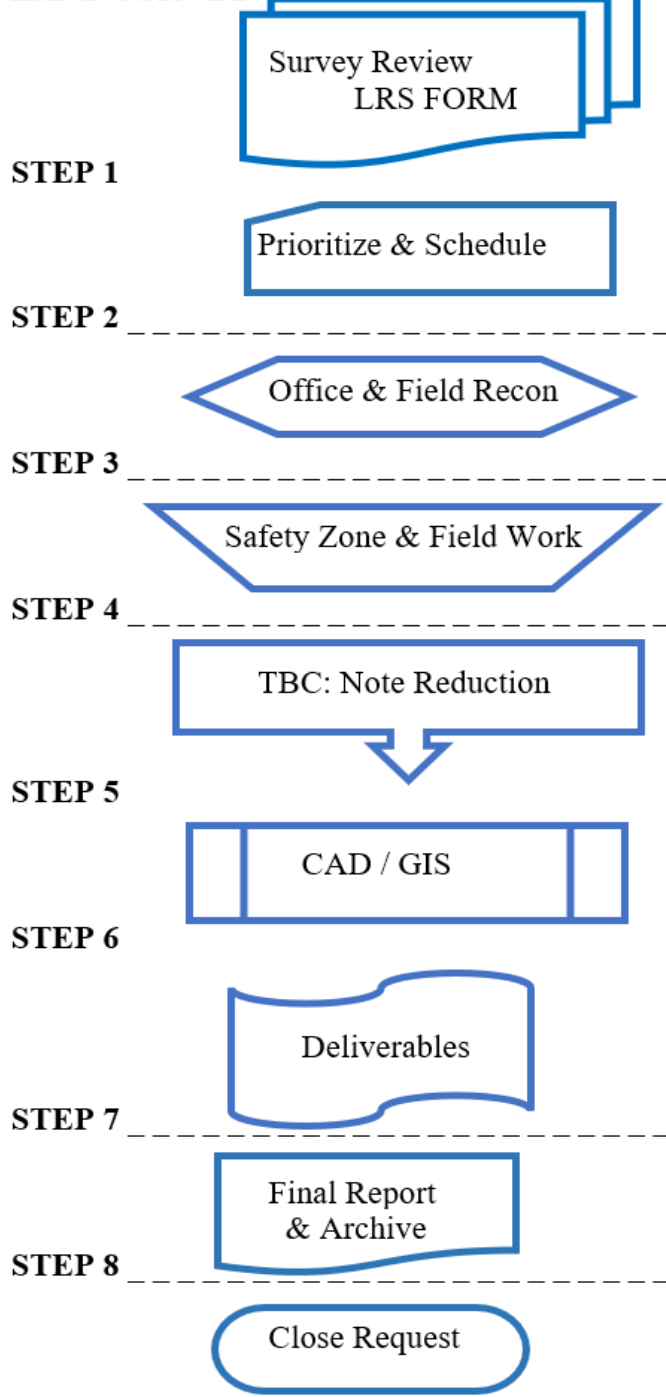
ANY EARTH DISTURBANCE MUST OBTAIN COMPLIANCE WITH NNH&HPD AND FISH & WILDLIFE (FOR ROAD IMPROVEMENTS/MAINTENANCE). IF NEW CULVERTS OR DRAINAGE TO BE INSTALLED, ALL MUST APPLY FOR COMPLIANCE (401,404,402 PERMITS). PLEASE CONTACT NAVAJO DOT FOR GUIDANCE.



ADHERE TO STIPULATION(S) set forth in NNH&HPD, Fish & wildlife, Federal, Tribal, and Other Compliance Form(s); Non-Compliance of rules, policies, regulations and stipulations may result in criminal penalties and civil assessments.

LAND SURVEY PROCESS

LAND SURVEY



LAND AGENT PROCESS

- Obtain ROW and Leasing documents for Navajo DOT projects:
- Tribal Access Authorization (TAA) For road improvement/new
- Land Withdrawal (LWD) –Maintenance Yards
- Rights-of-way – BIA process for non-Navajo entities (Federal, State, County) for road improvement/new road, road maintenance
- To collect consent from valid grazing permit holders
- Obtain a verification letter listing all impacted permit holders
- Determine the status of the permit (Valid, Invalid, Deceased)
- Obtains applicable proposed undertaking supporting chapter resolution

ENVIRONMENTAL ENGINEER



Proactive Hydrologic & Hydraulic Analyses for Stream Crossings:

- Before commencing road projects that cross streams or washes, a H & H analyses is conducted for water flow dynamics, designing appropriate and resilient crossing structures (like culverts or bridges), and proactively mitigating potential impacts on water quality, aquatic habitats, and overall stream integrity.



The Clean Water Act (CWA) 401/404

- Permitting process, managed by the Army Corps of Engineers (ACOE) regulatory program, is introduced for road projects that involve the discharge of dredge or fill material into Waters of the U.S. (WOTUS), aiming to balance the protection of aquatic resources with infrastructure development.
- The CWA Section 401 Water Quality Certification from the Navajo EPA must be obtained before the ACOE can issue a 404 permit.

ENVIRONMENTAL PROCESS FOR NEW PROJECTS

