

GLASS ROOTS INC.

A Lasting Tribute

*Discover how
a small amount of
cremation ash is turned
into crystal heirloom
memorials.*



PROUD MAKERS OF

Crystal Ash MEMORIALS

2024 CATALOGUE VOL. 2



*Individually crafted with
the utmost respect.*



www.glassrootsstudio.com/memorials

Crystal Ash Memorials

Celebrate Their Spirit in Crystal



Mission

Losing a loved one is never easy, but we are privileged to make crystal ash memorials that may serve as a source of comfort and healing. We never take for granted the trust our customers place in us to honour their loved ones.

Contributors

Memorials - Curtis Dionne & Charlotte MacLeod
Photography, Editorial & Catalogue Design - Caitlin Moore
Editing - Rachel Fletcher

Glass Roots Inc. Staff

Curtis Dionne, Owner + Master Glassblower - Saint John
Charlotte MacLeod, Co-owner + Glass Artist - Saint John
Rachel Fletcher, Founding Member, Book-keeper, Gallery Manager - PEI
Caitlin Moore, Gallery Manager, Photographer, Webmaster - Saint John

Glass Roots Inc.

89 Canterbury Street, Suite 100
Saint John, New Brunswick
E2L 2C7
+1 506-642-0806
Monday - Saturday 9 am - 5 pm
GlassRootsNB@gmail.com



Glass Roots PEI

588 Main Street
Montague, Prince Edward Island
CoA 1R0
+1 902-838-2622
Tuesday - Friday 9 am - 5 pm
Saturday 9am - 3pm
GlassRootsPEI@gmail.com



Crystal Ash Memorials Our Process

After receiving your order, we securely store the ashes in a dedicated space. Partners Curtis Dionne and Charlotte MacLeod collaborate in the studio, carefully reviewing each order. Charlotte then assists Curtis in crafting memorials with the utmost respect and care.

Our objective is to deliver exquisite works of art destined to be cherished for years to come. Every crystal ash memorial includes a certificate featuring the name of your loved one, a photograph, and the artist's signature. These heirloom-quality memorials, with proper care, are designed to endure for generations.



Crystal Ash Memorials

A Note

Curtis Dionne and Charlotte MacLeod together have crafted hundreds of exquisite crystal ash memorials, providing solace to those seeking a beautiful way to remember their loved ones. Serving our customers has been a pleasure, reflecting on diverse orders made for cherished people and beloved pets. Whether grief is recent or spans a lifetime, we promise compassionate guidance through the memorial order process.

The memorials photographed in this catalogue have been lit and enhanced to capture the essence of our work. Some memorials were illuminated with LED light bases, available for separate purchase.

All our crystal ash memorials are crafted using traditional hand-blown glass techniques. Each memorial is a one-of-a-kind piece of art, as no moulds are employed in the process. Given the deeply personal nature of these memorials, we exercise utmost care to prevent the necessity of remaking them with precious ash. As a result, slight variations in size and colour can be anticipated between individual memorials, with the specified sizes being approximate. While exceedingly rare, we advise acknowledging the slight possibility of loss of ash during production.

Due to rising operating costs, we've adjusted our prices by \$100 this year, aligning our smallest memorial at \$210. This change reflects the time and care invested in crafting each unique piece. We acknowledge this is a significant investment, and we're grateful for our customers and those who entrust us with their precious memories.



Crystal Ash Memorials

Table of Contents

INFORMATION

Contact - P.37	Note - P.4
Custom Orders - P.30	Signature Colours - P.31
Dichroic Crystal - P.32	Table of Contents - P.5
FAQ - P.35	Testimonials - P.34
Introduction - P.2	Order Form - P.38
Marble Bases - P.33	Our Process - P.3
Memory & Gratitude - P.36	

MEMORIALS

Angel - P.6 \$450	Heartbeat - P.10-11 \$230
Anchor - P.7 \$295	Healing Stone - P.22 \$225
Bear - P.19 \$325, \$475	Hummingbird - P.17 \$250
Bumble Bee - P.15 \$210	Icicle - P.20 \$220
Candle Holder - P.21 \$295	Nesting Birds - P.18 \$260
Dragonfly - P.16 \$240	Paw Print - P.23 \$250, \$360
Egg - P.27 \$360	Pendant - P.25 \$210
Elephant - P.24 \$450	Rosebud - P.14 \$230
Eternal Flame - P.26 \$375, \$600	Sailboat - P.8 \$375
Evergreen Tree - P.12 \$250	Sphere - P.28-29 \$250, \$360, \$700
Fiddlehead - P.13 \$295	Whale Tail - P.9 \$360





Crystal Ash Memorials
ANGEL



The melding of crystal and cremation ash creates a delicate angelic form, a timeless symbol of grace and protection. As benevolent intermediaries between heaven and Earth, these angels offer solace and reassurance, ensuring your loved one is forever embraced in a celestial realm. Each angelic sculpture becomes a radiant reminder of eternal love, providing comfort and serenity to those in mourning.

Angel stands approximately 6".



Angel Memorial \$450

Crystal Ash Memorials
ANCHOR

Our anchor-shaped crystal ash memorial is designed with profound meaning. Just like a ship anchor provides stability on the water, our memorial symbolizes a grounding force during difficult times. It serves as a tribute to your loved one, offering a sense of refuge and a connection to cherished memories.



In the form of this anchor, we aim to encapsulate the enduring hope for calm seas amid life's storms. Explore this heartfelt memorial as a timeless representation of your loved one's legacy and the comfort it brings during life's challenges.

Anchor Memorial \$295

Anchor is approximately 4.5", can be suspended from the glass loop at the top.



Crystal Ash Memorials
SAILBOAT

Symbolizing journey and adventure, our crystal ash memorial sailboat captures the essence of life's odyssey. Mirroring the forces that carry us, these sailboats represent the 'breath of life' with their primary momentum driven by the wind in their sails.

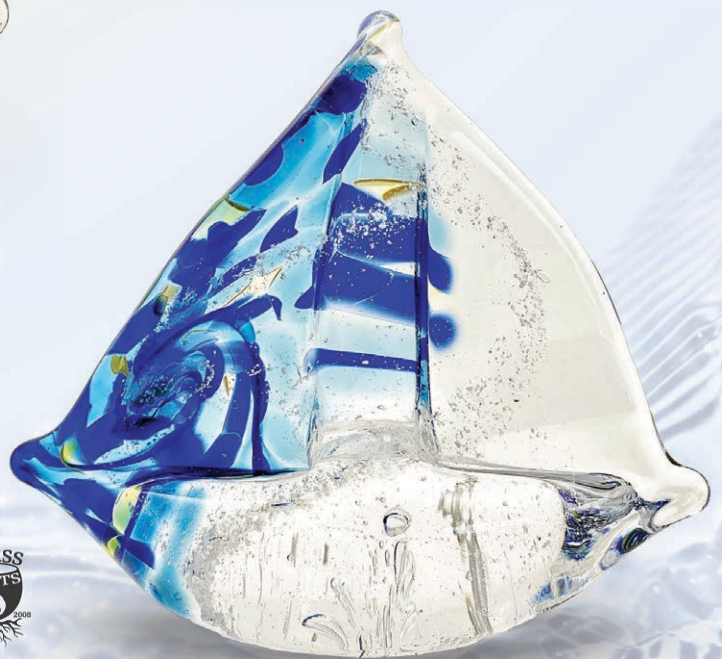


Designed with a swirl of colours mimicking the setting sun, the sailboat stands as a profound metaphor, honouring the unique voyage of your loved one and providing a tangible tribute to their enduring spirit.



Sailboat is approximately 4" x 4".

Memorial Sailboat
\$375





Crystal Ash Memorials

WHALE TAIL

Graceful and powerful, our crystal ash memorial Whale Tail beautifully encapsulate a wealth of symbolism. A Whale Tail — also called a fluke — symbolizes more than just a part of the whale; it embodies the virtues of good luck, speed, freedom, and strength. Much like the majestic power the tail provides to the whale, these memorial whale tails stand as enduring tributes, capturing the essence of your loved one's strength and the boundless freedom of their spirit.



Memorial Whale Tail
\$360

Whale Tail is approximately 5" x 4.5".





Crystal Ash Memorials
HEARTBEAT

Among our most beloved memorials, the heart captures the universal symbol of love and affection recognized worldwide.

Crafted with care and precision, our crystal ash heart-shaped memorials go beyond mere form; they become a profound testament to the enduring love we hold for those we cherish.

The heart, in its crystalline grace, symbolizes not just a shape but the essence of deep, heartfelt connections that transcend borders and cultures, making it a poignant and cherished tribute.



Heart is approximately 2.5".



Crystal Ash Memorials
HEARTBEAT



Memorial Heartbeat
 \$230

Memorial Hanging Heart
 \$230

The heart can lie flat or request a facet to allow it to stand on its side.



A glass loop is added to the heart so it may be hung on display.



Crystal Ash Memorials

EVERGREEN TREE

Evergreen trees, known for retaining their leaves throughout the winter, are powerful symbols of immortality and eternal life. In their unyielding greenery, even during the harshest seasons, they reflect the enduring spirit of your loved one.



These memorials stand as living tributes, capturing the essence of perpetual vitality and offering a timeless representation of the everlasting impact your cherished one has left behind.

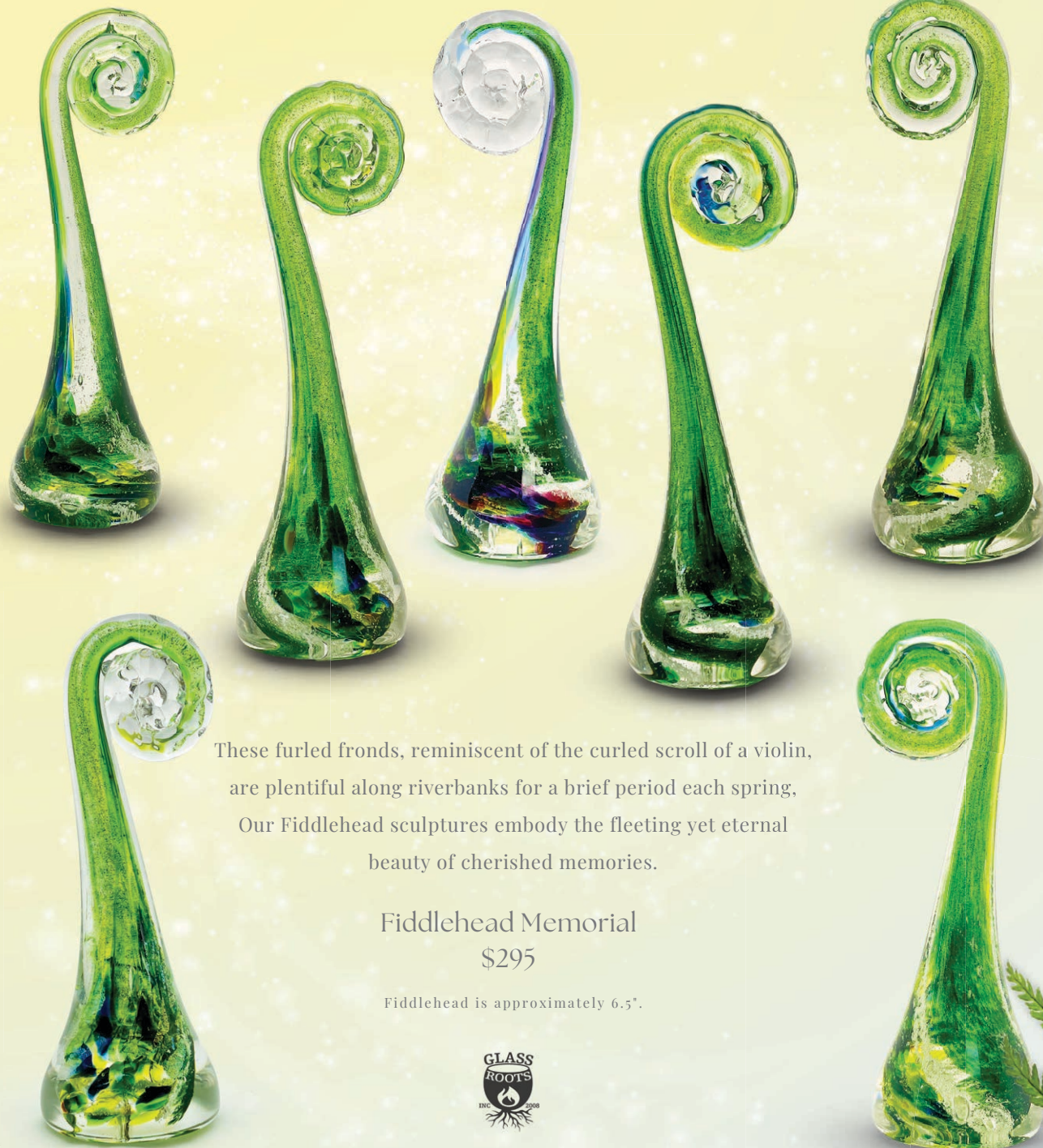
Memorial Evergreen Tree
\$250

Tree stands approximately 4".



Crystal Ash Memorials
FIDDLEHEAD

Beloved for their symbolism in regional cuisine and revered as a distinctive emblem of New Brunswick, our fiddlehead memorial captures the essence of remembrance.



These furred fronds, reminiscent of the curled scroll of a violin, are plentiful along riverbanks for a brief period each spring. Our Fiddlehead sculptures embody the fleeting yet eternal beauty of cherished memories.

Fiddlehead Memorial
\$295

Fiddlehead is approximately 6.5".



www.glassrootsstudio.com/memorials

Crystal Ash Memorials
ROSEBUD



Roses symbolize love, passion, admiration and nature's beauty. Their splendour is hard to resist. Coveted throughout history for their incomparable beauty and spellbinding fragrance, roses have always been the best messengers of emotions.

Rosebud Memorial
\$230

Rosebud measures approximately 2.5".



Crystal Ash Memorials
BUMBLE BEE



The bee is a symbol of wisdom and spiritual guardianship.
Our crystal ash bumble bee memorials embody the virtues of innovation,
creativity, community, and love.
The Bumble Bee transcends a mere tribute, capturing the enduring spirit of
your loved one as a timeless and wise guardian.



Bumble Bee
Memorial Ornament
\$210

Each bumblebee memorial ornament comes with
a glass loop on its back for easy hanging display.
You may request glass feet to have it elegantly
showcased in a standing position.



Crystal Ash Memorials

DRAGONFLY SUNCATCHER



Universally symbolizing change, transformation, and self-realization, the dragonfly holds deep spiritual meaning. Representing the souls of the departed in various cultures, a dragonfly visitation offers assurance of freedom for the departed. Our crystal ash dragonfly memorials elegantly encapsulate these profound qualities, providing a unique tribute to the enduring spirit of your loved one.



Dragonfly Memorial
Sun-catcher
\$240

Dragonfly is approximately 3.5" x 3.5".
A glass loop on its back for easy
hanging display.



www.glassrootsstudio.com/memorials



Crystal Ash Memorials
**HUMMINGBIRD
SUNCATCHER**

Embodying ancient folklore, hummingbirds symbolize healing, love, luck, and joy across cultures. In memorializing a loved one, our crystal ash hummingbird suncatcher elegantly captures this symbolism, reminding us to appreciate life's simple pleasures and cherish each moment.



Hummingbird Memorial Sun-catcher
\$250



Hummingbird is approximately 5" x 3.5".
A glass loop on its back for easy hanging display.



Crystal Ash Memorials
NESTING BIRD



Like a bird guarding its clutch, our nesting bird memorials are symbolic guardians of cherished memories. It represents a connection that transcends the physical realm, signifying the perpetual guidance and protection your loved one offers through their eternal energy and song. With every glance, the memorial serves as a reminder that your loved one's spirit, like a guardian, watches over, protects, and guides, creating an everlasting connection between the living and the eternal.



Nesting Bird Memorial
\$260

Nesting Bird is approximately 3" x 2.5".





Crystal Ash Memorials

BEAR

Spiritually revered across cultures, bears symbolize strength, courage, and a deep connection to nature. Bears embody a powerful spirit associated with introspection and healing, representing a source of strength and protection. Our crystal ash memorial bears encapsulate these spiritual qualities, offering a meaningful way to honor and preserve the enduring spirit of your loved one.

Medium Bear \$475

Medium bear is approximately 4" x 5".



Small Bear \$325

Small bear is approximately 3" x 4".



Crystal Ash Memorials

ICICLE ORNAMENT



Crafted with care, our crystal ash memorial icicle ornaments capture the delicate beauty of nature's frozen wonders.

Icicles, symbols of purity and tranquility, inspire awe with their graceful forms. When touched by light, the icicles glisten, mirroring the ethereal beauty of memories preserved within.

Each ornament symbolizes the enduring spirit of your loved ones in the timeless elegance of an icicle's beauty.

Icicle Ornament \$220

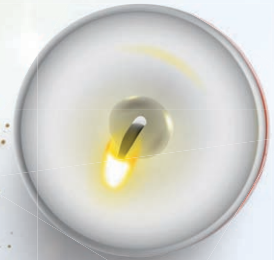
Icicles are approximately 3.5".



Crystal Ash Memorials
CANDLE HOLDER



The ritual of lighting a candle to pay tribute to a life 'passed' has long been a part of our culture. Keeping a light burning in remembrance signifies that the memory still lives on and burns bright. Our crystal ash candle holder memorials are each hand-crafted for reflection and remembrance.



Memorial
Candle Holder
\$295

Candle holder approximately 3.5".

www.glassrootsstudio.com/memorials



Crystal Ash Memorials
**HEALING
STONE**

Crafted for mindful reflection and prayer, our crystal ash healing stone memorials are designed to be held in the palm of your hand.

Rooted in ancient Hindu and Buddhist philosophies, this practice harnesses the power of natural elements to elevate mindfulness, foster self-acceptance, and cultivate inner peace.



Memorial Healing Stone
\$225

Healing Stone is approximately 1" x 2.5".



Crystal Ash Memorials
PAW PRINT

Our memorials are designed to honour the lasting impact of beloved pets. Our paw print are an easily recognizable symbol, expressing the affection and indelible impressions our furry friends have made in our lives.



For those who've left
paw-prints on our hearts.

4" Paw Print Memorial
\$360



2" Paw Print Memorial
\$250



Additional charges apply for a memorial mounted on an engraved base. Refer to the order form for specific details.

Crystal Ash Memorials
ELEPHANT



Elephants, revered worldwide, symbolize luck, prosperity, and strength in overcoming obstacles and dispelling negativity. Beyond this, they embody qualities of wisdom, longevity, memory, and vitality.

Elephant stands approximately 5'.



Elephant Memorial
\$450

Crystal Ash Memorials
PENDANT



Our crystal ash memorial pendants feature a delicate glass loop that allows you to wear this meaningful memorial close to your heart as a necklace or hung on display.

Pendant is approximately 1.25".

These wearable tributes offer a tangible and elegant way to keep the cherished memories of your loved one alive and intimately connected to you.



Memorial Pendant
\$210



Crystal Ash Memorials
ETERNAL FLAME

The flame-shaped crystal ash memorial is crafted in the furnace's fire, the molten crystal and ash blend seamlessly, symbolizing the union of earthly elements with transformative power.

This process captures the essence of the eternal flame, representing our inner light and the divine fire within every soul.



Kindling a flame is not just an act; it's a metaphor for birth and resurrection, embodying the enduring essence and transformative power within this unique and meaningful memorial.

Small Memorial Flame

\$375

Large Flame is approximately 4".



Large Memorial Flame

\$600

Large Flame is approximately 7".



Crystal Ash Memorials

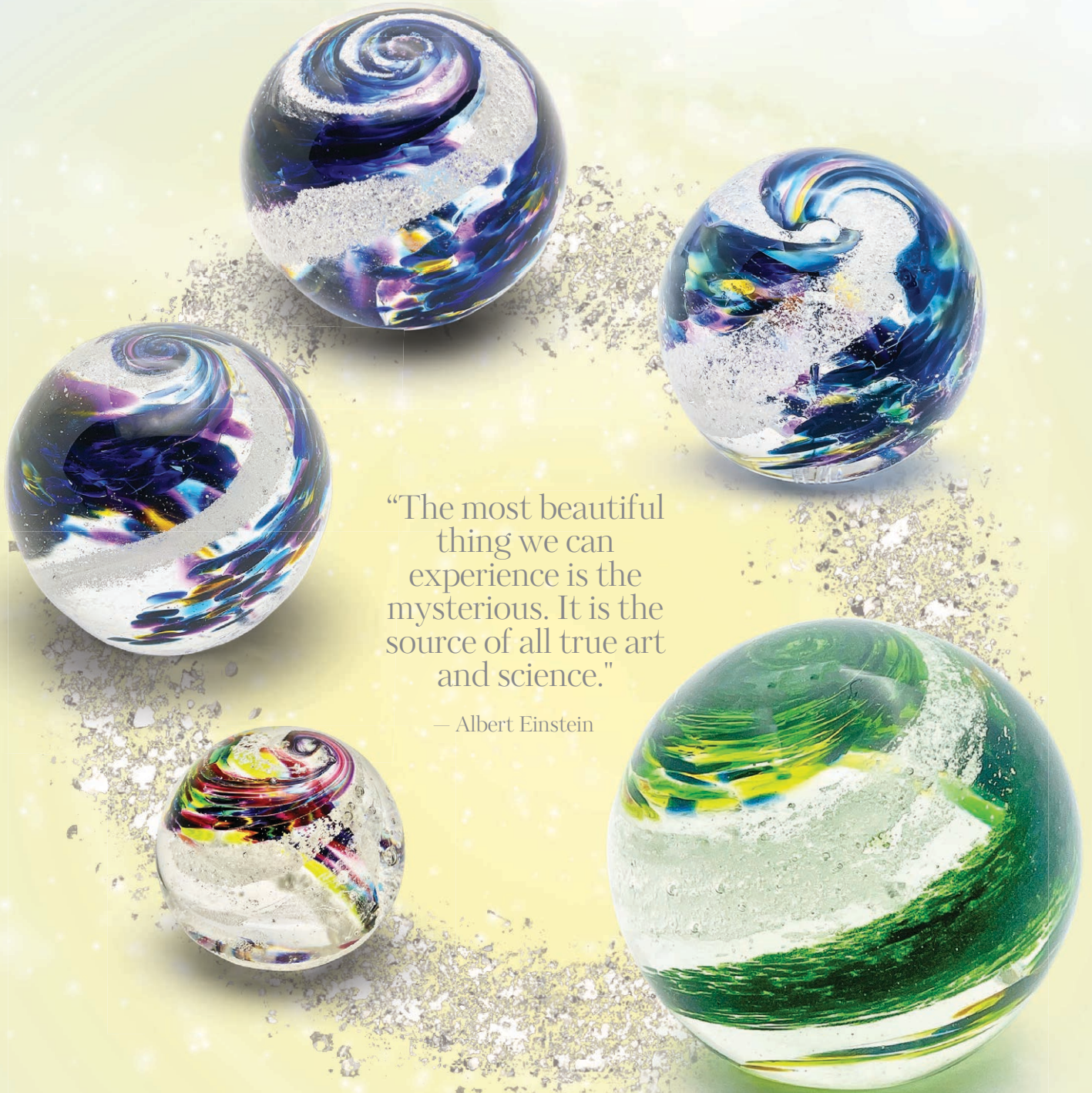
EGG

The Egg symbolizes fertility, hope, and the eternal circle of life. This timeless form is also associated with luck and prosperity, echoing ancient traditions that linked the egg to the creation of the universe.

Swirls of premium colors blended with ash create a comforting visual, reminiscent of a warm embrace.

5" Egg Memorial
\$360





"The most beautiful
thing we can
experience is the
mysterious. It is the
source of all true art
and science."

— Albert Einstein

Crystal Ash Memorials
SPHERE



Crystal Ash Memorials
SPHERE



A sphere symbolizes the eternal nature of life and the universe, embodying the concept of oneness. It serves as a reminder that time is infinite, and everything is interconnected—we are all part of a greater whole.



Small Sphere 2.5"
\$250

Medium Sphere 3.5"
\$360

Large Sphere 5"
\$700



Crystal Ash Memorials
Custom



Seeking a unique memorial that goes beyond our standard offerings?

While there are limitations to what we can create, we are open to discussing custom orders that hold personal significance for you. Throughout the years, we've crafted bespoke memorials such as cardinals, a lighthouse, and acorns for discerning customers. If you have a distinct vision in mind, we invite you to engage in a conversation with us about creating a custom memorial that uniquely honours your loved one.



Crystal Ash Memorials

Signature Colours

Choose your own colours that have special significance or choose one of our signature colour blends. Premium colours of glass frit are mixed together by specific parts to create our signature colour blends.



Borealis Multi-Colour



Rose Wine Cranberry



Fiddler's Green



Fundy Midnight Deep Blue



Ruby & Coal*



Wild Eyes Bright Blue



Violet Dawn Amethyst



Golden Wedding White*



Light My Fire Ambers*



**Examples shown for colours are not crystal ash memorials.*

Crystal Ash Memorials

Dichroic Crystal

Dichroic crystal is a stunning addition to our cremation ash memorials, available for an extra 30% per memorial. It is a special type of crystal that exhibits a unique optical phenomenon. The term 'dichroic' refers to its ability to display different colours when viewed from different angles. This captivating quality adds a mesmerizing play of hues to the memorial, creating a dynamic and visually striking effect.



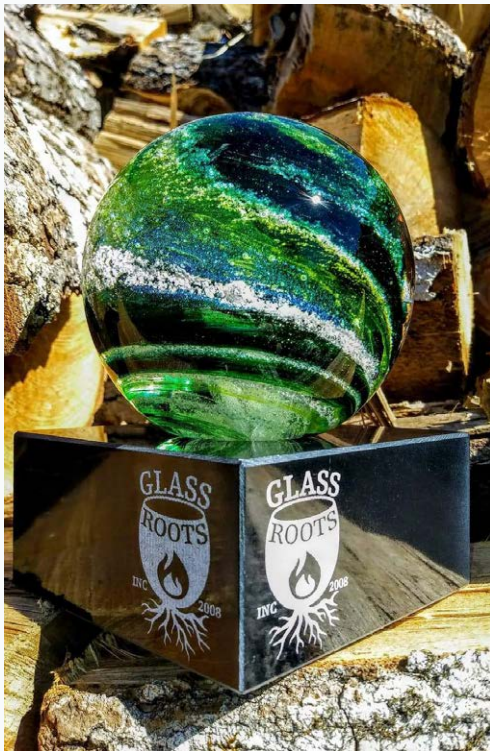
While every crystal ash memorial is beautiful without the inclusion of dichroic crystal, it not only enhances the aesthetic appeal but also symbolizes the multifaceted nature of cherished memories, capturing the essence of your loved one in a truly radiant and distinctive manner.

The memorials shown include the incorporation of dichroic crystal.



Crystal Ash Memorials Marble Base

Elevate the elegance of your crystal ash memorial by selecting a marble base for an extra 30%. Through our partnership with a local business, we provide the option for custom engraving on these marble bases. This personal touch adds a unique element to honour your loved one, ensuring a bespoke and professionally finished memorial. Choose this option for a timeless and refined tribute that truly stands out.



Crystal Ash Memorials

Testimonials

At Glass Roots, we take immense pride in crafting crystal ash memorials that embody the essence of your loved ones. But don't just take our word for it—read the touching testimonials from our valued customers. Their heartfelt stories and experiences with our memorials reflect the meaningful connections our creations foster.

*W*ant to send a huge heartfelt shout out to everyone at Glass Roots Inc Canada in St. John, NB. You have all done an outstanding job on making our sweet Ellie's pet memorial, by incorporating her ashes into blown glass you have captured Ellie perfectly. Special shout out to Caitlin, you were so kind, understanding, truly amazing in helping me through the ordering process (through all the tears and emotions), making beautiful suggestions that suited our Ellie, keeping me updated through the process, making me laugh through the tears with ur kind words and for recognizing Ellie's humour (in spirit) in your card. If it weren't for you I'm not sure I would have gotten through the process so easily. This piece brings us such happiness and we see Ellie all through it. Thank you, from both Mindy Weir and myself we will cherish this forever. Highly recommend, above and beyond. 🌈❤️

— Crystal Gushulak, November 24, 2023

Facebook mention



I can never say enough positive words about GLASS ROOTS INC CANADA! Caitlin was so patient and helpful when I was deciding on memorials in remembrance of our Daughter. The result was so beautiful and beyond my expectations! Curtis's work is magical! The gifts were ready in plenty of time as scheduled. I highly recommend the team of Curtis, Charlotte and Caitlin! Thank You for our cherished memorials.”

— Marie Cowperthwaite, March 6, 2023

Google review

*C*urtis and Charlotte did 4 memorials for us with our 'sons' ashes. They are the most beautiful creations to remember a loved one by. A few minutes ago the sun setting rays caught the glass and created a rainbow over the picture of his son that sits beside it. Need I say more?”

— Dave Smith, April 2, 2018

Facebook review

Crystal Ash Memorials

F A Q

What color options are available?

You have the flexibility to choose from our nine signature color mixes or select specific colors that hold special significance to you.

How much ash is needed for each memorial?

We only require a small amount of ashes for each memorial, with a tablespoon being more than sufficient. The remaining ashes will be thoughtfully returned along with the finished memorial.

Can we utilize all of the ash in a memorial?

We are limited to using no more than one teaspoon of ash in each memorial to ensure the integrity of the crystal. If you require a beautiful vessel for cremation ashes, feel free to inquire about custom glass urns.

Do we create blown glass memorials?

All our memorials are hand-blown solid crystal pieces. In consideration of your loved one, we avoid using cremation ash in blown vessels due to the fragile nature of blown glass, and to ensure the final product meets your expectations.

I don't live close to Saint John or Montague, do you ship memorials?

Certainly! Please feel free to mail us a small amount of ash in a well-sealed envelope or container along with our printable order form. Once complete, we'll ship your memorials to you. While we take every precaution in packing the crystal for shipping, it's important to note that, due to the sentimental value of memorials, insuring these items is not possible.

How long does it take to make a memorial?

We ensure a 4-6 week turnaround time for memorial completion, although we often process orders within 1-3 weeks. If timing is crucial, please inform us, and we'll do our best to accommodate your needs.

What happens when ash is added to crystal?

The ashes transform into a completely white appearance, beautifully enhanced by the crystal encasing it.

What is dichroic crystal?

Dichroic crystals refract light, creating a sparkling effect when illuminated. You can incorporate them into your memorial for an additional cost—refer to page 32 for details.

Can memorials come on an engraved base?

Certainly, you can have your memorial mounted on an engraved marble base for an additional cost. For more details, please refer to page 33.

Do we offer different sizes?

If you've spotted a memorial but desire a different size, let us know your preferences, and we'll strive to accommodate your request. Additional charges may apply.

Are there taxes on memorials?

Yes, all our memorials are subject to applicable HST, which is not included in the catalogue price.

Do we create custom memorials?

Certainly! We are always open to discussing custom memorials, and additional charges may apply.



Crystal Ash Memorials

In Memory and Gratitude:

Within the pages of our catalogue, we pay tribute to the cherished souls whose memorials grace these images. Each photograph tells a story of love, remembrance, and the enduring beauty of those who have left an indelible mark on our hearts. May these captured reflections serve as a timeless celebration of lives well-lived and the enduring connection we share with those who have touched our hearts.

<i>Agnes Dobson</i>	<i>Ellie "Punk"</i>	<i>Mary Drane</i>
<i>Archie Malone</i>	<i>Elmer Aucoin</i>	<i>Nancy Wilson</i>
<i>Archibald Cameron</i>	<i>Elmer Needle</i>	<i>Oliver Fisher</i>
<i>Barb & Jack Lee</i>	<i>Gary Price</i>	<i>Ozzy</i>
<i>Barbra Jean McKin</i>	<i>Gracie</i>	<i>Paul Keirstead</i>
<i>Basil Whynot</i>	<i>Heather & Sonny Pero</i>	<i>Pepper-Lou</i>
<i>Benny Fisher</i>	<i>Jamie Bone</i>	<i>Poco</i>
<i>Bernie Cormier</i>	<i>Jan Bird</i>	<i>Randall Fletcher</i>
<i>Charles Craig</i>	<i>Janice Boulos</i>	<i>Ronnie Schmidt</i>
<i>Chantelle Ervanowitz</i>	<i>Janice Graham</i>	<i>Rory</i>
<i>Charles Craig</i>	<i>Jasper</i>	<i>Ronald Spragg</i>
<i>Chloe LeBlanc</i>	<i>Jennifer Allaby</i>	<i>Sharon Hartlen</i>
<i>Chloe Webb</i>	<i>Joel London</i>	<i>Simone Berry</i>
<i>Daniel London</i>	<i>Kathleen Gagnon</i>	<i>Stephane LeMay</i>
<i>David Grant</i>	<i>Linda & Robert Cookson</i>	<i>Stan Levy</i>
<i>David J. Dickens</i>	<i>Linda Ettinger</i>	<i>Ziggy</i>
<i>Deidre Cowperthwaite</i>	<i>Margie Katikos</i>	<i>Zoe LeBlanc</i>
<i>Diane Hammond</i>	<i>Marilyn Coates</i>	<i>Michael Hayes</i>
<i>Edith Toms</i>		<i>Michael Holt</i>



Crystal Ash Memorials

Let's Connect!

Studio & Gallery Saint John, New Brunswick

During the global pandemic, Glass Artists Curtis Dionne and Charlotte MacLeod relocated their family and Glass Roots Inc. to Saint John, New Brunswick in 2021, and transitioned from a wood fire to a modern gas-powered furnace. Glass Roots' flagship gallery, which opened next door to the studio at 89 Canterbury Street in June 2022, serves as a hub for glassblowing demonstrations. When operating in the studio, visitors are welcome to step inside and observe the artistry, with seating available on three church pews accommodating 12-15 people.

Since opening, the gallery has been managed by Caitlin Moore. If you've visited, chances are she has warmly welcomed you. Caitlin is available at the gallery throughout the week and is dedicated to assisting everyone through the memorial order process.

Prince Edward Island Gallery

Rachel Fletcher, a founding member and current bookkeeper of Glass Roots since its establishment in 2008, co-founded the studio with Curtis on a rural homestead. While family obligations have brought Rachel back to PEI, her dedication to Glass Roots remains unwavering. You can now visit Rachel on the island to explore our exquisite blown glass products, and she will be delighted to assist you in placing your memorial orders. All of our blown glass and memorials are made at our studio in Saint John, NB. Let Rachel take care of shipping and handling for you.

Glass Roots Inc.

89 Canterbury Street, Suite 100
Saint John, New Brunswick
E2L 2C7
+1 506-642-0806
Monday - Saturday 9 am - 5 pm
GlassRootsNB@gmail.com



CDGlassRootsInc



GlassRootsNB



Glass Roots PEI

588 Main Street
Montague, Prince Edward Island
CoA 1R0
+1 902-838-2622
Tuesday-Friday 9 am-5 pm
Saturday 9 am-3 pm
GlassRootsPEI@gmail.com

Date:

Crystal Ash Memorial Order Form



Order #

Customer Name:

Memorial (deceased):

Phone:

Email:

Memorial	Quantity	Colours
Angel - P.6 \$450		
Anchor - P.7 \$295		
Bear - P.19 - \$325 \$475		
Bumble Bee - P.15 \$210		
Candle Holder - P.21 \$295		
Dragonfly - P.16 \$240		
Egg - P.27 \$360		
Elephant - P.24 \$450		
Evergreen Tree - P.12 \$250		
Fiddlehead - P.13 \$295		
Flame - P.26 \$375 - \$600		
Heartbeat - P.10-11 \$230		
Healing Stone - P.22 \$225		
Hummingbird - P.17 \$250		
Icicle - P.20 \$220		
Nesting Birds - P.18 \$260		
Paw Print - P.23 \$250 - \$360		
Pendant - P.25 \$210		
Rosebud - P.14 \$230		
Sailboat - P.8 \$375		
Sphere - P.28-29 \$250, \$360, \$700		
Whale Tail - P.9 \$360		

if applicable include copy for engraving, and/or return shipping address

Add Dichroic Crystal Add 30% _____ **Subtotal** _____

Marble Base Add 30% _____ **Tax** _____

_____ **Total** _____

_____ **Payment** _____



Crystal Ash Memorials
CATALOGUE



GLASS ROOTS INC.

www.glassrootsstudio.com/memorials

DISCOVER THE WORLD OF

Crystal Ash

MEMORIALS



Proud Makers of
One-of-a-Kind
Crystal Memorial
Heirlooms

GLASS ROOTS INC.

www.glassrootsstudio.com/memorials

